

Spring 2025

Home & Garden



A supplement of the **Journal Review**

BEILERS

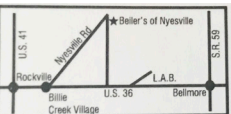
OF NYESVILLE GREENHOUSE & GARDEN CENTER

OPEN HOUSE!

NOW OPEN!

APRIL 25TH -26TH

Vegetables
Annuals
Perennials
Ornamental Trees
Berry Plants



1195 N. Nyesville Rd, Rockville, IN 47872

Monday - Friday 8am - 8pm • Saturday 8am - 4pm • Closed Sunday



BLUE CACTUS

tacos & tequila bar

1624 CRAWFORDSVILLE SQ DR, CRAWFORDSVILLE, IN | (765) 365-5085

*Tired from working outside?
Come get yourself great food and cold drinks!*



HOURS

MONDAY - THURSDAY:
11:00 AM - 9:00 PM

FRIDAY & SATURDAY:
11:00 AM - 10:00 PM

SUNDAY: 11:00 AM - 8:00 PM



SCAN TO
VIEW OUR
CURRENT
MENU!



Country
Corner

Garden
Center

Cornering Quality & Value Since 1996

SAVE
THE DATE

Annual
Open House

APRIL
25 & 26

SAMUEL AND SUSIE ZOOK

NOW OPEN

Note: Credit & Debit
cards are not accepted

8440 N 550 E,
Marshall, IN 47859
Located 3.5 miles E of Turkey
Run State Park, Just off SR 47
on County Rd. 550E

765-597-4637

Hours: Mon-Fri 8-7pm
Saturday 8-5pm
Closed Sunday



Dream On...

Let us help you make your dreams come true with our Home Equity Line of Credit.

- Home remodel
- Dream vacation
- Education expenses
- New car

HHSB
Hoosier Heartland
State Bank



765-364-0784

myhhsb.com



Member
FDIC



Safety Tips for the Season

The change in seasons offers a great opportunity to spot-check the home's various safety systems and components to ensure your family's well-being.

You might have overlooked everyday wear and tear, batteries might be running low or upgrades may be needed. This potentially life-saving equipment might be needed sooner than you think.

SMOKE DETECTORS

We usually associate smoke detector maintenance with changing the batteries. But the detectors themselves should be replaced every 10 years, according to experts. Check the manufacturing date on the back of the detector to make sure yours is still within its decade-long lifespan. If you're buying new ones, consider modern smoke alarm options that also detect CO2 or synchronize through the home.

Install them in each bedroom, outside every sleeping area, and at each of the levels of your home. Test your alarms at least once a month by pressing the designated button – and replace the batteries at least once a year. An easy way to remember this is to switch them out when the clocks change each spring for Daylight Saving Time.

FIRE EXTINGUISHER

Another critical safety device that



requires maintenance is a fire extinguisher. You can't just buy one and trust it will work forever. Regular inspections ensure its effectiveness. Check the pressure gauge located near the lever of your extinguisher, and look for any visible signs of damage or wear. Most high-quality extinguishers have a lifespan of five to 15 years, but that period can differ depending on the manufacturer.

ALARMS AND LOCKS

Investing in a home security system is one of the most effective strategies for protecting your property. Many companies provide 24/7 emergency monitoring services that will notify you and the authorities if your alarm detects a potential threat. You'll have peace of mind, whether at home or away. Inspect and replace locks around your home as needed. If their basic working integrity is

compromised, whether on a door or window, you may be at risk of losing valuables and jeopardizing your family's safety. Pay close attention to locks that are difficult to operate and windows that still move while locked. Both are indications that a replacement may be needed.



Josh & Brittany McCloud
OWNERS



DUTCHER
TRENCHING, INC

Septic/Sewer Installations,
Repair & Maintenance
Septic Tank Cleaning
Grease Trap Cleaning • Riser Installations
Lift Pumps • Locator Service
High Pressure Water Jetting
Sewer Machines • Camera Service
IOWPA Certified Septic Inspections

765-362-3308 • 765-364-1594

806 Kentucky St., Crawfordsville, IN | dutchertrenching@gmail.com

Fisher's DISCOUNT STORE

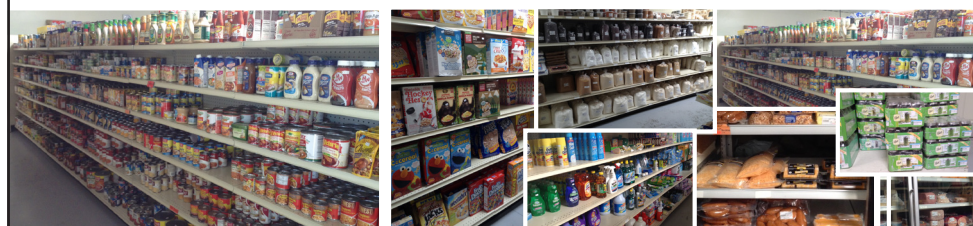


FREE
Coffee &
Donuts

Open House May 9 and 10

6492 E. 850 N. | Waveland, IN | (765) 435-7231

5 mi. E of Turkey Run Park on SR 47. Turn north on 700 E., Turn left on 850 N. Approx. 1 mile
Mon, Wed & Thurs 8 am-6 pm • Tues & Fri 8 am-8 pm • Sat 8 am-5 pm • Closed Sunday



Bellmore Country Store

At the intersection of 59 & 36 | 765-344-1520

Fresh Deli Sandwiches
Discount Groceries • Bulk Foods
Deli Meats & Cheese • Canned Goods

Mon, Tues, Wed, Fri 9-6, Sat 9-5:30 *Closed Thurs & Sun
Visit our 2nd Store, Fisher's Discount Store

Be Ready for Spring Gardening

The time and effort you put into preparation in spring can lead to a thriving garden for the rest of the warm months.

So take the time now to plant bulbs, organize your garage or shed, repair and sharpen tools and get your compost pile going again. Here's how:

GETTING ORGANIZED

If your garden shed isn't heated or well-lit, you may encounter an unpleasant surprise or two when opening it back up for spring. The structure might have sustained damage from leaks or weather exposure. Rust can be an issue. Rodents or other small creatures may have taken up residence. When temperatures first begin to rise, inspect the shed and then get to work rectifying whatever issues you discover.

GARDENING TOOLS

Use a file to sharpen any tools with blades, including pruners, shears and loppers. Lubricate any tools with moving parts. If they're still caked with mud from the last growing last season, wash them with a garden hose and then clean them in warm, soapy water. Next, use the same hose to thoroughly clean the wheelbarrow, then oil the wheels and tighten any loose bearings so it's ready for the season ahead.

OTHER TASKS

Prune or remove any perennials that have become overgrown or congested. Replace outdated supplies since



items like grass seeds may not remain viable over long periods of time. Take a quick look around to make sure you have plenty of any needed fertilizers and soil amendments for the upcoming year. If needed, consult with your local extension office to better understand the specific needs of your plants before they begin to sprout.

EARLY PLANTING

Now, you're ready. Spring is the time to plant bulbs for them to bloom in summer and fall. Apply a fresh layer of mulch, too. Dyed mulches are generally designed to last for several seasons, but typically still need a slight refresh after the long winter. Mulching early will help with suppressing weed growth. It's a good

time to divide existing fall-blooming plants. Separating them now gives the individual plants time to re-establish in their new locations. They'll start developing the robust root systems they'll eventually need when temperatures begin to drop again.

Good fences make good neighbors

They also provide privacy and security and enhance property.

- Industrial & Residential
- Custom Designs
- Vinyl-Wood
- Ornamental
- Chain Link
- Farm Fence

*Fully Bonded
and Insured
Professional
Installation
and FREE
Estimates!*

Lowe's CUSTOM FENCING

765-230-0600 | lowe8282@sbcglobal.net
P.O. Box 402, 118 E. South St., Ladoga

1 AND 2 BEDROOM APARTMENT HOMES

- We accept HUD vouchers*
- We also have affordable housing*



WATERFORD APARTMENTS

765-362-6131

2001 Zelmar Drive, Crawfordsville, IN 47933

waterford.mysamteam.com

TDD# 1-877-895-2077



Maintaining Your Sprinklers

So you've invested in a sprinkler or irrigation system to maintain your lawn through the warm months.

A professionally installed sprinkler system can ensure years of lush shrubbery, bright flowers and green grass.

When the ice and frost begin to melt, protect that investment by performing early maintenance to ensure everything's in good working order before the system shifts into over-drive for summer.

SPRING PREPARATIONS

The first part of the preparation process involves patience. Confirm that frosty winter conditions have passed before activating your sprinklers. If you run water through the system while the ground remains frozen, the pipes may burst during startup or shortly thereafter. Assess your soil's condition by digging at least a foot deep in an area away from the underground tubing. If you encounter frozen soil, postpone the de-winterizing process until temperatures are higher.

INITIAL EVALUATIONS

Begin at the control panel for the sprinklers, which is generally outdoors near your home's water system. Closely follow instructions provided by the manufacturer or installer, while verifying that the settings for time, date, and zones remain correct. Inspect the condition of your backup



batteries if the sprinkler system depends on them. If you have concerns regarding their remaining functionality, contact the installation company.

CLEAN UP

Cleaning the sprinkler heads before the first use may be the most labor-intensive part of this entire process, particularly if you have a large yard. Examine each one for any

signs of wear and replace damaged parts before activating the system. You can do this with an old toothbrush, thoroughly cleaning all nozzles to ensure they distribute water uniformly across their assigned zones.

GETTING STARTED

After cleaning, make sure all valves are closed except for the nozzle that

is farthest from the main water source, which should remain open to allow trapped air to escape. Gradually open the main valve until you hear water flowing and then allow the main line to fill steadily. For larger systems, you may want to only slightly open the valve over a period of minutes. Opening it too quickly could result in costly mishaps like ruptured pipes or valves.

OPEN HOUSE!

April 25th-26th

During Open House Only
10% OFF
ALL PLANTS
FREE Coffee & Donuts

Vegetable Plants • Bedding Plants
Herbs • Hanging Baskets • Patio Planters
Numerous Styles & Combinations
Mums thru August & September

Country View Greenhouse

3789 N 400 E., Rockville, IN

OPEN DAWN TO DUSK - NO SUNDAY SALES

Directions from Rockville, IN: Take US 41 N to SR 236.

Go East approximately 4 miles to 400 E, turn right, go South 1.63 miles on left.



DURALAST
COATINGS

765-820-8073

ESH COATINGS LLC

CONCRETE FLOOR COATINGS

5x Stronger Than Epoxy



INCREASE PROPERTY VALUES!!!

Basement Floors • Garage Floors • Porches • Patios

Free Consultation: Residential • Commercial • Industrial

KINGMAN, IN



Check out our

COMMUNITY CALENDAR

Want to see what's happening in your community? Check out our online calendar!

YOUR LOCAL NEWSPAPER SINCE 1841

Journal Review

765-362-1200 | WWW.JOURNALREVIEW.COM
200 S. WASHINGTON ST STE 101, CRAWFORDSVILLE



Check it
out here!



Sprucing Up the Outside

Freshening up your home's exterior is a rite of passage for spring.

At some point, wear and tear will dictate that your house's paint job needs to be addressed. But who should you hire? Here are a few tips on hiring the right professional painter for the job:

WHY HIRE A PRO?

This job is typically too big, and might be too dangerous, for the average homeowner to tackle. Instead, look for experienced paint companies that specialize in exterior work. (Some painters focus solely on interior projects, so save those for when you need to update your kitchen.) Before reaching out to potential painters, take some time to familiarize yourself with the exterior surfaces of your home. Browse home improvement stores and design magazines to gather inspiration for your desired aesthetic. You might even consider gathering some paint samples to help underscore the kind of colors you prefer.

EARLY EVALUATION

The cost of these exterior jobs reaches into the thousands of dollars, so conduct thorough research before you make a hire. Before inviting painters to assess your home, look for online reviews and neighbor recommendations. Get three to five pre-estimates for any work you plan on having done, and then carefully evaluate them. View examples of their previous work on other homes.

CONSULTATIONS AND QUOTES

Reputable painters will visit a home to provide an individualized estimate. During this visit, they will inspect your paint job's current condition while identifying any architectural challenges that may affect the project. This comprehensive evaluation helps them complete a more precise quote. Present your ideas regarding colors and seek their feed-

back. Their recommendations might include specific products or finishes that are more suitable for your local climate.

Ask each paint contractor about their years of experience in the industry. Make sure they are properly licensed and insured, and ask about affiliations with professional associations. Pay close attention to their professional insights, but don't be persuaded into choices that aren't in

line with your own budget or personal preferences. Following this discussion, the painter will provide a more detailed estimate. Review everyone's quotes, paying attention to the variations among them, before making a final decision. Ask about guarantees on their work.



NEW HORIZONS INSULATION

A Quality Insulation Job Doesn't Cost...It Pays!



Houses • Crawl Spaces • Ag • Commercial
Spray Foam • Blown In • Batts

Amos Beiler 765-592-3632



**MIDWEST
RENTALS**

WEDDING • PARTY • TOOLS • JOBSITE

SPRING TOOL RENTALS

"READY TO BRING YOUR OUTDOOR SPACE TO LIFE THIS SPRING?
WHETHER YOU'RE CULTIVATING A GARDEN, REVITALIZING YOUR
LAWN, OR DESIGNING A STUNNING LANDSCAPE, WE HAVE THE
TOOLS TO HELP YOU EVERY STEP OF THE WAY!"

RESERVE NOW

765-423-5543 x1

www.midwestrentalsinc.com

WE RENT

- GARDEN TILLERS
- AERATORS
- MOWERS
- CHAINSAW / POLESAW
- EDGERS
- POST AUGERS
- SEEDERS
- SOD CUTTERS
- AND MORE!!!!

PROMO CODE #SPRING FOR 15% OFF
Spring



Specializing
in

**REPLACEMENT
WINDOWS.**

Installation
available!



MIDWEST WINDOW CO.

WE KNOW WINDOWS!

Call us today at (765) 592-3944

**LET US DO THE HARD
WORK FOR YOU!**

16 Seip Road, Rockville, IN 47872 | Open Mon-Sat 8am-4pm

Before You Mulch

Every thriving flower bed starts with a solid foundation of mulch. It provides a big aesthetic boost, of course, serving as a showcasing background for your plants and shrubs.

More importantly, mulch also suppresses weeds, retains moisture and enhances soil quality.

THE RIGHT TIME

Apply mulch in the spring after planting your seasonal flowers and vegetables. Mulching around trees and other landscape features also enhances their visual interest. You'll be putting the perfect finishing touch to your gardening efforts. Over the next few months, mulch will act as a protective layer that keeps weeds away. Into the winter, it prevents plant displacement while shielding delicate plants from cold weather. Once the mulch has fully decomposed, it's time to refresh or completely replenish.

EXPLORE THE OPTIONS

There is a wide variety of mulch available for any type of flower bed or garden, including wood chips, bark, pine straw, rubber mulch, dyed wood, grass clippings and even newspaper. Select a type that complements the colors of your landscaping and home, and make sure it suits your local environment. If you choose dyed mulch, apply it during a



period where it won't rain for 24 to 48 hours to prevent staining nearby hard surfaces.

HANDLING MULCH

Wear gardening gloves when handling mulch to shield your hands from splinters and any dyes. Choose comfortable old clothing that you don't mind getting soiled. If you have allergies, consider wearing a face

mask for added protection. Use a wheelbarrow or cart along with a shovel to transport the mulch, and lift from your knees rather than your back. To complete the job, rake the mulch to create an even layer.

MULCH CARE

If weeds begin emerging through the mulch, remove them manually or apply a weed and grass killer. Mold

may develop in areas where the entire surface isn't exposed to air and light. Gently turn the mulch and evenly redistribute everything. As the mulch dries, the mold should dissipate. Exposure to sun and rain will cause your mulch to fade and break down, but that's part of its purpose to enrich the soil. Turning the mulch will also help maintain its appearance for a longer period.

Growing for you in 2025!

- Shrubs
- Flowering Trees
- Shade Trees
- Perennials
- Lilacs & Roses
- Baskets & Planters
- Vegetable Plants
- Vegetable Seeds
- Bulk Mulch

*Why drive far away
when top quality & best
value are so close!*

Hours: Mon- Fri 8-6
Saturday 8-4 • Sunday 10-3

www.progreengardencenter.net



1000 Lafayette Rd. • (765) 362-9575

Discover the utility of an entryway bench



Do you prioritize functionality over style in your home decor choices? When it comes to your home's entryway, both are essential. The right choice of bench can significantly improve the look and function of this high-traffic space.

A PRACTICAL PIECE OF FURNITURE

An entryway bench is a convenient spot to put on and take off your shoes or boots. Benches are especially useful for older adults and parents with young children. Available in various models, entryway benches can greatly improve your storage capacity, an essential advantage in smaller spaces.

THE RIGHT MODEL

No two home entrances are alike, so you'll need to choose a bench that

fits your unique space. Consider these features in making your selection:

- A small, streamlined bench with clean, modern lines that won't crowd the room
- A storage bench with a fold-down seat and hidden compartment for gloves, bags and hats
- A bench with a built-in coat rack to hang your jackets—ideal if you don't have a hall closet
- A bench with storage cubes or baskets and multiple compartments to help organize your accessories

The type of hardware materials, such as wood or metal, along with upholstery like leather or fabric, will influence the price. Visit a furniture retailer near you to find the perfect bench for your entryway.

Get the Most out of Storage

Is your garage starting to overflow with household items? Simple shelving units might not be enough to accommodate it all.

Turn to innovative storage solutions like these to optimize your available space:

MAKING A PLAN

Fully customized garage storage systems are available, but it's not necessary to spend tons of money to have a more functional space. Consider exploring yard sales, classified ads or resale shops for thriftier garage storage alternatives. Those who are open to items with minor cosmetic imperfections can find quality storage solutions that are sturdy enough to support your belongings but also far more affordable.

WALL STORAGE

When floor space is at a premium, explore inventive ways to store items like bicycles, sports gear, and lawn equipment on the walls. Hooks are a common option. A modular wall-mounted slat storage system can also provide the flexibility to fit any specific need. You can enhance the slats with wire baskets or hooks to accommodate a wide range of items, from rakes to garden hoses. Transform the interior of your garage door into valuable storage space by attaching



metal brackets to securely hold light-weight sports equipment like fishing rods in a horizontal position.

VERTICAL OPTIONS

Plastic storage bins help us all organize and separate things by season, sport or family member. But they can only be stacked so high – and that setup makes it very difficult to access anything but the top bin. Construct storage towers with plywood shelving so that individual bins can be

removed and then returned after use. You can also store light-weight items in plastic storage bins up above by screwing T-shaped 2x2 pieces of wood into the ceiling and then sliding the bins in place. Take advantage of unused space in the garage by creating corner shelves in the existing studs.

SUSPENDED STORAGE

If you want to clear out space on the floor of your garage, you can also

look up. Items that are infrequently used can be stored in elevated areas. If you have a ladder available, installing a fixed overhead storage shelf is an easy option. Bicycle storage systems now incorporate a rope and pulley mechanism with hooks, allowing you to securely store them overhead. A similar pulley system can be employed to lift a metal shelf for storing items in plastic bins.

Want To Involve Your Kids In Spring Cleaning?



Do you have children? Getting them used to doing chores at an early age is a great idea. It teaches them responsibility and helps prepare them to be independent adults while also giving you a helpful hand. Spring cleaning is the perfect opportunity to show them correct cleaning methods and have fun while you do it.

SAFETY

Your child's safety is most important. For younger kids, focus on safe tasks, such as sorting toys or dusting furniture. Keep harmful cleaning products out of their reach, and explain why certain items, like step-ladders, aren't toys.

ATMOSPHERE

Use your creativity to turn housework into a game. Transform each task into a friendly challenge, such as, "Who can clean up the fastest?" Since children like to imitate their parents, maintain a positive attitude. Play some upbeat music and dance while you clean.

When the chores are done, reward yourselves with a trip to the movies or a family meal out. Your kids will associate spring cleaning with fun and be eager to repeat the experience next year. Clever, isn't it?

Spring Cleaning 101: Don't Forget These 7 Tasks

Spring cleaning is a yearly tradition that breathes fresh air into your home, but certain areas are easy to overlook—or ignore. For a thorough spring cleaning, don't neglect these seven essential tasks.

1. Garbage cans. Even if you empty them regularly, garbage cans can quickly accumulate bacteria and unpleasant odours. Be sure to wash them out with vinegar and hot water.

2. Light switches. These high-touch surfaces are breeding grounds for germs. Wiping them down with a clean cloth and all-purpose cleaner can make a big difference.

3. Cushions. Soft, decorative accessories need attention too. If possible, machine wash or vacuum

them thoroughly to remove dust and allergens.

4. Coffee maker. This often-used appliance can develop limescale and grime buildup. Use a mixture of vinegar and water to sanitize the inside. Rinse it thoroughly afterward.

5. Fans. The blades and grilles on both ceiling and standing floor fans quickly collect dust. Use a damp cloth to keep them clean.

6. Blinds and curtains. Machine wash your curtains and dust your blinds with a dry cloth to keep them looking fresh.

7. Vents. Although easy to miss, air vents trap dust and allergens. Use a vacuum cleaner or a damp cloth to



keep them clean.

Cleaning these often-overlooked areas will help you create a healthier

living space. Gather your cleaning supplies and take your spring cleaning to the next level.

Avoid Spring Allergens

Spring brings blossoming trees, blooming flowers and the discomfort of seasonal allergies.

Experts say more than 50 million Americans are affected every year. Pollen is one of the main culprits, followed by various grasses, mold and dust that cause us to sneeze, cough and rub our eyes. Unfortunately, there remains no cure for these allergies — but these key strategies can help mitigate some of the worst reactions:

START BY DECLUTTERING

As you begin spring cleaning, consider one of the most common allergens found in our homes: Dust. Decluttering can quickly reduce its accumulation around your home. Remove items like unworn clothing, piles of reading material and old rags. Dust your home regularly since HVAC systems tend to distribute these particles throughout our homes. Remember that everyone spends a considerable amount of time in the bedroom, so focus on making this a safe zone that's free from allergens associated with clutter. In addition to dusting, regularly change out bed linens and pillowcases.

DEEP CLEANING

Spring brings an influx of pollen and other allergens into your home, and not just through open doors. Maintaining a clean and fresh



environment also involves regular assessments of your home's air. Consider investing in high-quality filters for your living areas.

Local HVAC technicians may also have additional recommendations that will improve your home's air quality. Bedding is particularly prone to accumulating dust mites and pollen. They can cause allergic reactions overnight while we are tucked in, or later in the day after

attaching themselves to our hair or clothing. Wash your bedding in hot water at least once a week.

AROUND THE HOUSE

Next, look down. Give your carpet a thorough spring cleaning. For the toughest jobs, it may be necessary to rent a commercial carpet shampooer from a nearby hardware store or hire a professional cleaning service.

Remember that some carpet types are more prone to trapping allergens and then releasing them into the air when disturbed. After a deep cleaning, make it a habit to vacuum at least once a week. Ensure that your air systems and ductwork are regularly cleaned. If any components are showing signs of wear and tear, dust and moisture can easily get inside your home.



Hillsboro Hardware

LUMBER & FARM SUPPLY LLC



110 E. Main St., Hillsboro, IN • PO Box 335 • 765-798-4195

WWW.HILLSBOROHARDWARE.ORG