

FREE - TAKE ONE!

Vol. 28 No. 23

SEPTEMBER 2, 2021

800-543-8271 • 800-665-8875

WEEKLY TRADER MAGAZINE



Find us on
Facebook

@myweeklytrader
AUCTIONS PG. 9

VISIT OUR NEW WEBSITE! MYWEEKLYTRADER.COM

**Get a great deal on
getting more done.**



Cab available with select models 24.8 - 62 HP



Kubota

Together we do more.®

QUARLES
SUPPLY COMPANY INC.

(417) 777-2391
quarleskubota.com

Save big on our compact tractors. The versatility to handle every job and a wide range of performance-matched attachments. Kubota tractors under 100 HP are rated #1 for reliability*. Stop in for a demo today.

\$0 DOWN 0% APR UP TO 84 MONTHS
PLUS
SAVE UP TO \$1,400

New L2501DT w/Loader Deal!

VISIT US TODAY FOR THIS LIMITED-TIME OFFER

**L2501DT
w/loader \$23,995
Financing Price**

NEW Kubota L2501DT
• 4wd, DIESEL, AG TIRES
• KUBOTA LOADER

• 5' ROTARY CUTTER
• 5' BOX BLADE
• NEW 18' KODIAK
TRAILER W/RAMPS



KubotaUSA.com

*2020 Progressive Farmer Reader Insights Award for Fewest Reported Problems Overall in the category of Small Tractor (Under 100 Horse Power). Award based on 2020 Progressive Farmer Readers Insights Tractors Study. © Kubota Tractor Corporation, 2021. \$0 Down, 0% APR financing for up to 84 months available on purchases of new Kubota LX2610SU and all L01 series equipment from participating dealers' in-stock inventory is available to qualified purchasers through Kubota Credit Corporation, U.S.A.; subject to credit approval. Example: 84 monthly payments of \$1,190 per \$1,000 financed. Customer instant rebates of \$1,000 for L01 and \$500 for LX2610SU are available on qualifying finance or \$1,500 L01 and \$1,000 for LX2610 on cash purchases. Additional instant rebate of \$400 is available with purchase of one new qualifying implement. Some exceptions apply. Offers expire 12/31/21. Terms subject to change. This material is for descriptive purposes only. Kubota disclaims all representations and warranties, express or implied, or any liability from the use of this material. For complete warranty, disclaimer, safety, incentive offer and product information, consult your Dealer or KubotaUSA.com.

1KBB03467_Com_Tract_L_F1_B-1_0725

Land

For Sale

Webster Co., MO • 120 +/- Acres



\$389,000

- Property is secluded, scenic with live water
- Located in Marshfield School District and just minutes to Springfield
- Mature hardwoods, brushy thickets, numerous ridges and drainages, and creek
- This property grows monster bucks and has been managed for last 10 years
- Multiple 140-170 class deer harvested on farm
- 15 acres of food plots and 15 acres of native grasses planted
- 1 acre wetland waterfowl area
- Multiple springs and Cantrell Creek on property
- Class 2 and 3 soils on crop ground
- Timber stand improvement on property
- Farm has a deeded easement to property and a private access
- Survey completed on farm



WHITETAIL PROPERTIES REAL ESTATE

HUNTING | RANCH | FARM | TIMBER

Brian Utecht | 417-766-5595

Brian.Utecht@whitetailproperties.com

WHITETAILPROPERTIES.COM

Missouri's Top Land Specialist in 2014,
2015, 2016, 2017, 2018 and 2019





THE MOST COMPLETE LINE-UP IN THE INDUSTRY

Cutting widths from 36" to 104"



AGRI-ENTERPRISES

For Outstanding Products & Service

1-1/2 Miles South Of Licking, MO On Hwy 63

573-674-2203 • 1-800-653-7152 • www.agri-enterprises.com

ROUTE 66 DINING & LODGING GUIDE:
183 pages, \$5.00. 417-532-2045. (leave message) Lebanon.


STAY-TUFF FENCE, Johnson concrete waterers, waterlines, hydrants, posts, panels, hydraulic hoses, & GOOD FOOD. Farmers Quik Stop. 417-991-1938. Lebanon.

POOL TABLES: Installations, moves, recovers, repairs, accessories, etc. 573-646-1700.

OLD WORLD BOOK ENCYCLOPEDIAS: Full set. \$40. Kenmore sewing machine \$30. 8am-8pm. 417-664-4278. Lebanon.

WEATHERED BARN WOOD SIDING: 10" wide. 573-729-7226. www.pineridgerustic.com Salem.

METAL ROOFS: We repair leaky metal roofs with warranty. Also, flat roofs, very affordable, cover all state. 573-338-1148. Jefferson City.



TIM'S USED CARS

(573) 341-3828 • 1334 South Bishop (Hwy. 63) • Rolla, MO
Next to Hwy CC • www.tims-used-cars.com

	<p>2008 CADILLAC ESCALADE AWD 6.2 V-8, Loaded w/ Options, 136,xxx miles Only \$14,500</p>		<p>2014 RAM 2500 TRADESMAN Crew Cab, 4x4, 5.7 Hemi, Auto, Power Equipped, 164,xxx Miles Only \$22,900</p>
	<p>2008 DODGE 2500 HD Mega Cab, 4x4, SXT, 6.7 Diesel, Auto, Power Equipped Only \$18,500</p>		<p>2019 RAM 1500 SLT Quad Cab, 4x4, 5.7 Auto, Power Equipped, 95,xxx Miles Only \$33,800</p>

LARGE SELECTION OF CARS, TRUCKS, SUVs & VANS!

TIRES, BRAKES & MORE LLC

- All Makes & Models
- Affordable Pricing
- Quality Products
- Outstanding Service

Military & Senior Discounts

Tue.-Sat. 8-5
Closed Sun. & Mon.
1237 Rt. 66, Lebanon, MO
417-532-0850

FERTRELL ORGANIC FERTILIZER:
Free Catalog. 315-796-4370. Caulfield.

BUYING STANDING CEDAR: Minimum 6-in diameter. 417-531-0403.

LOG SIDING: 2X8 Pine/Western Cedar
www.pineridgerustic.com 573-729-7226. Salem.

USED MOBILE HOMES: Call David at VILLA HOMES IN ROLLA 573-578-8072. Rolla.

BUYING MOBILE HOMES: Call David at VILLA HOMES IN ROLLA 573-578-8072. Rolla.

WANTED TO BUY ANTIQUE CARS: Convertible, Corvettes, unrestored, motors, parts considered. 870-324-1154. Ash Flat.

WANTED TO BUY DODGE DIESEL TRUCK: Or Toyota Tacoma. Also, buying antique cars. 870-324-1154. Ash Flat.

I BUY.....used mobile homes. Call or text 573-338-6250 or email GregS.CH@outlook.com

POWER WASHING, CALL JET STREAM POWER WASHING FOR ALL OF YOUR GRIM TO SHINE NEEDS:

We wash it all, semis, stock trailers, campers, equipment, houses, buildings and driveways. If it has grime, call today to make it shine in no time! 417-270-1075. Potosi.

WANTED, TIMBER TO LOG ON SHARES: Honest, reliable, references. 417-533-4607, 417-664-1195.

HISTORY OF THE SCHOOL OF THE OZARKS: at Point Lookout. \$5.00. 417-532-2045. (leave message and phone number). Lebanon.

CUSTOM SAW MILLING: 417-533-4607, 417-664-1195. Lebanon.

BLACK ANGUS BULLS: from 12 to 18 months. 417-932-4026. Summersville.

THE HEART OF THE SPRING BOOK. A Bennett Spring Novel by Laura L. Valenti, 161 pages. \$6.50. 417-532-2045. (Leave message and phone number). Lebanon.

**HEALTHCARE
MADE EASY**

WE CAN HELP YOU NAVIGATE
HEALTHCARE.GOV

**Choices In Health
& Life Insurance**
Mike Eblen, Agent
417-532-3360
238 S. Jefferson Avenue Suite A, Lebanon

STOCK MOBILE HOMES AVAILABLE:

We gottem, single and double, 3 and 4 bedroom! Call Tuffy 573-657-2176. amegamobilehomes.com

IMAGES OF ROUTE 66 BOOK: 386 pages, by Gary Turner of Ash Grove. 80th Anniversary Edition. \$14.50. 417-532-2045. (Leave message and phone number). Lebanon.

AVAILABLE STOCK MOBILE

HOMES: Immediately, double wide and single, 3 and 4 bedroom 573-499-9993 columbiadiscounthomes.com

TRUE MODULARS: 30 to 60 day delivery available, 3 and 4 bedroom 573-657-7040 chateauhomes.net

LAKE OF THE OZARKS- Family Fun, Relaxation & Good Fishing – Lots starting at \$3,950 - \$79 down - \$79 per month. Beautiful Wooded Lots, a short distance to the Lake. Free lake access and boat ramps. Immediate possession, own for investment, owner financing. Also Camping lots and Acreage tracts available. Prices good through Sept. 13, 2021. HWY 135 South out of Stover, MO take Lake Road 135-12 to Ivy Bend Office. Open Thursday, Friday, Saturday, Sunday, Monday, call (573-372-6493) for an appointment. Ivybendlandoffice.com

REGISTERED HEREFORD & ANGUS

BULLS: Home raised, Some Show-Me Select Qualified. 573-701-7828. Belgrade.

**BOOST YOUR ONLINE PRESENCE
TODAY!**

WE MAKE DIGITAL ADVERTISING SIMPLE

Don't you just hate it when someone talks over your head? We hate it too! That's why our mission at LC Digital is to simplify digital advertising for businesses.

We will start with a little research to help you identify the best types of digital ads for your business, then we will design a strategy that will fit your budget. We promise we will make it simple for you to understand.

LC DIGITAL **LC RECORD** **TRADER**

417-532-9131 • 100 E. Commercial St., Lebanon • www.laclederecord.com

FIREARMS: Professional Repairs and Restorations. Baron's Gunsmithing. 573-363-5801, Camdenton.

NEW 2021 CALICO 14' BP STOCK TRAILER: Red, escape door, interior plywood lined/sealed, rubber floor/nose mats, spare tire, brakes, 7000# GVWR. \$7,000. 417-718-5347. Conway.

SMALL SQUARE BALES OF STRAW: 417-932-4026. Summersville.

OLD READERS DIGEST: \$1 each. 8am-8pm. 417-664-4278. Lebanon.

6 BRAND NEW AREA RUGS: White with gray squares, fluffy. \$160. 8am-8pm. 417-664-4278. Lebanon.

2 ANTIQUE CURIO CABINETS: \$100 each. Call between 8am-8pm. 417-664-4278. Lebanon.

SENIOR CITIZENS WALKER: Bedside potty, potty seat with arms for commode. 8am-8pm. 417-664-4278. Lebanon.

REFRIGERATOR FOR SALE: Used in garage. Runs good. \$45. 417-664-4278. Lebanon.

TREES OF MISSOURI BOOK: \$5. Missouri Wildlife & Nature Viewing Book, your guide to 101 spectacular wildlife and nature viewing area, \$5. 417-532-2045. (Leave message and phone number). Lebanon.

2 MALE BORDER DOODLES: 1 black & white, 1 blue merle, 5 months old. 573-739-9431.

TINY HOMES: We gottem 573-881-3283

2007 ADIRONDACK RV: 27 foot, 1-slide out. \$11,000. 417-887-8221. Springfield.

OFFICIAL TRACTOR OF TOUGH™



Marshfield Machinery Inc.

222 E. Madison • Marshfield, MO 65706
417-859-2117 • www.marshfieldmachinery.com

MahindraUSA.com © 2020 Mahindra USA Inc.



NEW MAHINDRA TRACTORS

1626 4WD & LDR 26HP
IN STOCK

1635 4WD & LDR 36HP
IN STOCK

2638 4WD & LDR 37HP
IN STOCK

USED TRACTORS

IHC 826 92 HP	9,000
USED ROUND BALERS	
HESSTON 945 4X5	9,000
JOHN DEERE 375 5X4	3,500
HESSTON 560 5X6	2,000
NH 850 5X5	1,500
USED MISC.	
HAYBUSTER 107C NOTIL DRILL	17,500
FRONTIER BALE PROCESSOR	8,500
BUSH HOG 3510 10FT	8,000
SNAPPER ZERO TURN	2,750
BUSH HOG 2052 ZERO TURN	2,500
BUSH HOG POST HOLE DIGGER	1,200

Marshfield Machinery Inc.

222 E. Madison
Marshfield, MO 65706
417-859-2117
www.marshfieldmachinery.com

Sue's Greenhouse 3rd Annual Fall Flower Fest

Saturday, September 4th
8:00 am to 3:00pm



Come join us
for a day of FUN,
**GORGEOUS FALL
PLANTS, MUMS,
PUMPKINS,
GOURDS, AND SO
MUCH MORE.**






Big variety of Vendors with Handcrafted Items, Pony Cart Rides, Bake Sale, and Quilt Raffle to benefit Eagle Nest School. Barbecue lunch available and loads of Old Fashioned Fun all day long.

Sue's Greenhouse, LLC
5 miles North of Norwood on Highway E.
(3495 South Highway E, Norwood, MO 65717)
417-746-0220

1950'S COLT REVOLVER DEALERS MEMORABILIA.: All for \$100. Call pm. 573-764-3517.

STORY & PICTURES BOOK OF OLD LINN CREEK: Haha Tonka and Camden County, by T. Victor Jeffries, 72 pages. \$5.00 postpaid. (417)532-2045. (Leave message and phone number) Lebanon.

ROUND & SQUARE BALES OF HAY: 417-345-5634. Phillipsburg.

ROLL 1959 B.U. MONTICELLO PENNY'S.: First year for these. \$40. Call pm. 573-764-3517.

COOKBOOK COLLECTION: \$1.00 each. Many varieties. 417-532-2045. (Leave message and phone number). Lebanon.

HEAVY 6-BAR GATES: Weldable or bolt type hinges – 16' gate \$192 available painted. Lewis Welding and Repair. 573-729-0272 – 573-729-1405. Salem.



CLASSIC EDGE
TITANIUM HDX

Eliminate high heating bills with Central Boiler's NEW, certified Classic Edge Titanium HDX OUTDOOR WOOD FURNACE. Call today!

Outdoor Wood Furnace
CentralBoiler.com

Yarbrough Equipment Sales & Services, Inc.
9776 E. State Hwy 00 • Strafford, MO
417-736-2303 • 1-866-286-6901 • www.yarbeq.com



The Classic Edge 360, 560 and 760 HDX are U.S. EPA Certified

1949 STUDBAKER 1½ TON TRUCK: One family owner, all original, no rust, garage kept, flat head 6-cylinder, 4 speed. 573-880-9178 or 573-880-9456. St. Genevieve.

ROLL 1958 B.U. LINCOLN WHEAT PENNY'S.: Last year for these. \$60. Call pm. 573-764-3517.


SELLING OUT OF THE HORSE BUSINESS: 15-20 Quarter horse bred, some registered, from weanlings to broke horses. 2 old gentle mules. 417-531-5707. Lebanon.

WARSAW, MISSOURI OZARK ECHOES 1964 YEARBOOK, \$20. 417-532-2045. (leave message and phone number). Lebanon.

TOTE FULL OF AUNT JAMIMA STUFF: \$200 for all. 573-327-9068. Park Hills.

100 VINYL RECORD ALBUMS: Mostly county some gospel. Take al \$2.00 each. 573-689-2490. Bunker.

METAL DETECTOR: \$125. 573-327-9068. Park Hills.



Where it's always a bull market!

Angus - Brangus - Ultrablacks

14603 HIGHWAY KK, LEBANON, MO
417.288.4444 • WALLSTREETCATTLE.COM

LIONEL TRAIN SET: Steam engine, tender, caboose and other car, track and transformer. \$195. 573-364-7465. Rolla

SNAPPER RIDING MOWER: Needs a tune-up & tire tubes. Only \$95. 573-364-7465. Rolla.

MURRY RIDING MOWER: Good tires, deck, blades, 5-speed, needs motor. \$150-gun trade. 573-364-7465. Rolla.

ENGLISH SHEPHERD puppies, bob tails, some not, out of working parents, 573-760-5157.

GREAT PYRENEESE PUPPIES: \$100. Mixed puppies, Blue Heeler and Eskimo cross. \$25 Bi-color. UTD on shots & worming. Sweet Corn. 417-589-0227. Conway.

OAK TABLE – FOUR CHAIRS: \$250, Pine heart day bed with mattress, good shape \$75.00. 417-543-8261. Ava.

SONY SOUNDBAR AND SUBWOOFER: With remote. \$100 OBO. 417-668-7793 landline. No text. Falcon.

LOTS OF DVD MOVIES: \$2 each. 573-327-9068. Park Hills.



Meadowview Dutch Market

Discount & Surplus Groceries • Prices Subject to Stock on Hand

Call to Order
417-993-3017

DELI SPECIAL

MUNSTER CHEESE..... REG. \$5.50 **SALE \$4.50**

ROAST BEEF..... REG. \$6.99 **SALE \$6.49**

TRY our Fresh Homemade DELI Sandwiches: TURKEY, HAM, ROAST BEEF, ITALIAN, BLT'S, PULLED PORK AND BLT PULLED PORK (MADE YOUR WAY)! COME IN OR CALL to order! ALSO Custom Deli trays! Veggie OR FRESH Meat-N-Cheese!

Fresh Seeded or Seedless Watermelon **\$2.99**

Fresh Cantaloupe, Peaches & Apples

Beef Smoked Sausage **SALE \$3.99** 36 OZ. REGULAR \$4.99

Jumbo Franks **SALE 49¢** EA. 12 OZ. REGULAR 75¢

Jimmy Dean Bacon **SALE \$2.79** 16 OZ. REGULAR \$2.99

Boneless Skinless Chicken Breast **\$1.49** LB.

Chicken Leg Quarters **39¢** 10 LB. BAG OR **29¢** 40 LB. BOX

T Bone Steak **\$8.99** LB.

Sale Dates September 1st, 2021 to September 6th, 2021 while supplies last!

TAKING ORDERS FOR CONCORD GRAPES

\$14.99 1/2 BU. **Call to Order: 417-993-3017**

ICE CREAM SALE!!

3 GALLON ICE CREAM **\$11.99** REGULAR \$14.99 *Great Variety!!!*

NEAPOLITAN ICE CREAM **99¢** 56 OZ. **BUY ONE GET ONE FREE**

MEADOWVIEW DUTCH MARKET
417-993-3017 Hours: Mon-Thurs 8-5pm
Fri 8-6pm • Sat 8-5pm
23 Miles West on Hwy 64 • Right on T Hwy
9 miles • Left on E Hwy 1 mile on Left

LABOR DAY SPECIALS

NOW ACCEPTING CREDIT, DEBIT CARDS & EBT

DUTCH COUNTRY STORE, LLC
573-378-4395
Hours: Mon-Thurs 8-5pm
Fri 8-6pm • Sat 8-5pm
5 miles East of Versailles off Hwy C on Kelsay Road

3 BASEBALL MITTS FROM THE 1950'S: \$60. 417-457-1023. Raymondville.

CUB CADET LGT 1054 RIDING LAWN MOWER: \$2,000. 573-539-2538. Barnett.

GM ½ TON 4-WHEEL DRIVE FRONT AXEL HOUSING: With 3.07 gears. Fits a 77 to 87. \$80. 314-303-7857. Cedar Hill.

HISTORY OF UNIVERSITY OF MISSOURI-ROLLA BOOK: Formerly Rolla School of Mines, 258 pages, HB, \$6.50. 417-532-2045. (Leave message and phone number). Lebanon.

PICKUP TRUCK BEDLINER: Standard size, Ford F-150 to F350. \$40. 314-303-7857. Cedar Hill.

KENMORE 30" ELECTRIC DROP IN RANGE: Self-cleaning, Kenmore dishwasher, microwave, new Instapot \$150. 573-699-4351. St. James.

RUBBER & LEATHER BOOTS AND HIP WADERS. Men's 11, Women's 7, some insulated. \$15-\$40 obo. 636-239-2695. Washington.



Come see us for All your Skid Steer Attachments

WE HAVE EVERYTHING FROM PALLET FORKS TO FORESTRY MULCHERS!

31 Porter Rd • Eldon, MO • 573-434-9225 • www.amoutdoorsales.com



AUSTRALIAN SHEPHERDS for sale, blue merle, red and whites, out of working parents, 573-663-7459.

L3200 KUBOTA 4WD TRACTOR: 31 hp, with loader, hydrostat transmission. Low hours. \$18,900.00. 417-270-1505.

CABLE PULLING JAW GRIP: Klein 1684-5, excellent condition. \$150. 314-303-7857. Cedar Hill.

JOHN DEERE 566 ROUND BALER: Monitor, kicker. \$5,200. 573-765-4406. Richland.

L4600 KUBOTA 4WD TRACTOR: 45 hp, with loader. \$23,500.00. 417-270-1505.

WANTED: 1966 to 1971 Jeepster Commando. 816-838-6254. Lees Summit.

WELL BUILT CART: For small mig welder. New-used \$200. 573-729-0272. Salem.

85 DODGE SHORT BED 360 4x4 \$1,200 417-532-5670.

KEAN CUTTER 7FT FINISH MOWER: 3-point. \$1,500. 573-765-4406. Richland.

KUSTER LOGGING

BUYER of Standing Timber Oak and Walnut

Dozing Now Available

417-259-0047

References Available



JOHN DEERE 310C DIESEL BACKHOE LOADER: Cab, 4x4 extend-a-hoe, with extra hoe buckets. \$11,500. 573-765-4406. Richland.

BRUSH HOG 12715 15 FT. HYD. FOLD BRUSHCUTTER: Chains, solid tires, big gear boxes. \$9,850. 573-765-4406. Richland.

Offering the Area's LOWEST METAL PRICES!



Custom Homes • Metal Roofs

29 Gauge

#1 PAINTED METAL

- ★ Lifetime Warranty - \$99.00 Sq.
- ★ 40 Year Warranty - \$94.00 Sq.
- ★ 20 Year Warranty - \$91.00 Sq.
- ★ 25 Year Galvalume - \$76.00 Sq.

Labor prices will be higher in locations over 75 miles from Marshfield, MO

Pole Barn Packages

CALL TODAY FOR A FREE QUOTE!

24'x32'x10'

30'x40'x10'

40'x60'x12'

Sales Tax & Delivery not included. Labor quotes available as well.

24'x40'x10'

30'x60'x10'

CALL TODAY!

Compare Before You Buy.

We Use Only The **Highest Quality** Materials!



ALL MATERIAL PACKAGES INCLUDE...

- ✓ #1 Yellow Pine Lumber
- ✓ #1-40 Yr. Painted

- Metal w/Screws
- ✓ 1-10' Overhead Door
- ✓ 1-36" Entry Door

Fully Insured



PORTABLE BUILDINGS
Rent to Own
No Credit Check

1049 SCHOOLVIEW DR.
Marshfield, MO



Marshfield BUILDINGS
www.marshfieldbuildings.com



417-859-7744

FULL BLOODED BLUE HEELER PUPS: UTD shots/worming. \$150. 417-650-0995. Lebanon.

CUTTING BOARD: Fits in your kitchen counter top, various species of ducks. \$15. 636-239-2695. Washington.

CALUS LOGGING

20 YEARS EXPERIENCE

Buying Standing Timber
Walnut & Oak

Joe Calus, Owner
417-926-4606 • MTN. GROVE

CERTIFIED

COMMERCIAL BELT SANDER: \$500. Wet/Dry Tile Saw, \$175. Routers, \$45. 417-880-4576. Fordland.

INTERNATIONAL TWO ROW CORN PICKER: Pull type. 573-674-3601. Licking.

INTERNATIONAL SQUARE HAY BALER: Field ready. 573-674-3601. Licking.

MOEN KITCHEN FAUCET: Single lever, sprayer, new cartridge. \$45 obo. 636-239-2695. Washington.

500 ROUND BALES: \$45/bale. 3,000 square bales, \$5.50/bale. 417-345-5634. Phillipsburg.

IHC 1086 DIESEL TRACTOR: Cab and air, 130 hp. \$13,000. 573-765-4406. Richland.

JOHN DEERE 4230 DIESEL TRACTOR: Cab & air, 100 hp. \$13,500. 573-765-4406. Richland.

Is Your Log Home Starting To Look UGLY?

Professional Staining & Repair
(Log Homes & Wood Siding)

Call Pine Ridge Rustic

Log Home Building Supplies 573-729-7226

www.pineridgerustic.com



NEW GUNS IN STOCK! rollingmead.com. Heritage 22LR, \$129.51, SCCY 9mm, \$244.96. Ruger EC9S 9mm, \$264.97. 417-241-1523. Marshfield.

2007 ADIRONDACK RV: with slide-out, sleeps 6. \$11,000. 417-766-3997. Springfield.

IHC 10 FT. WHEEL DISK: \$1,800. 573-765-4406. Richland.

FORD 4610 DIESEL TRACTOR: Canopy, 2000 hours 52HP with Brushhog loader. \$12,500. 573-765-4406. Richland.

CONWAY HIGH SCHOOL BEARS 2000-2001 YEARBOOK. \$12.50. 417-532-2045. (Leave message and phone number.) Lebanon.

FERTRELL ORGANIC FERTILIZER: Free Catalog. 315-796-4370. Caulfield.

CLASSIC AMERICAN MUSCLE

We also have Bad Boy Implements



WORK WITH AN *Attitude*

1387 S. BISHOP AVE., ROLLA • 573-364-6944
WWW.STAHLMANPOWERSPORTS.COM 



PUBLIC AUCTION

LABOR DAY, MONDAY, SEPT. 6, 2021 AT 10 AM

LOCATION: 38411 Highway CC, California, MO 65108

Directions: From High Point, MO take Highway C go west one mile to Highway CC, turn right and go north to sale.

PERSONAL PROPERTY INCLUDES:

**Tractors, Construction Equipment, Farm Equipment,
Vehicles & Trailers, Shop Equipment & Misc., Shed,
Antique Wagon, Army Deuce and a Half**



FOR FULL LISTING AND DETAILS VISIT WHEELERAUCTIONS.COM!

SELLER: THOMPSON FARMS - R. G. (DECEASED) & WANDA THOMPSON
SELLER: HILLTOP RANCH

**Some items were consigned by neighbor,
Hilltop Ranch items will sell after Thompson Farms items**

Wheeler 
AUCTIONS & REAL ESTATE

23101 HWY. 24, PARIS, MO 65275 | 660-327-5890
WWW.WHEELERAUCTIONS.COM

For more information
Charlie Nordwald | 636-795-4552
Visit our website at
wheelerauctions.com.

FARM AUCTION

Monday September 6, 2021 10:00AM

LABOR DAY

Bob & Patty Carpenter

LABOR DAY

2381 N Farm Road 227 Strafford, MO 65757

Directions: From Strafford Take Hwy 125 South, Then East On Division/ Hwy YY & North On Farm Rd 227 To Auction. Watch For Signs.



Farm Machinery, Vehicles & Trailers- 1 Owner

- 2012 Case IH 105U 4x4 Tractor w/ Cab, Ldr, Bucket, Bale Spike & 1910Hrs
- 2010 Case IH 115 2WD Tractor w/ Cab & 815Hrs
- 2009 Case IH 115 2WD Tractor w/ Cab, Ldr, Bucket, Bale Spike, Pallet Fork & 825Hrs
- 2019 Case IH RB455 Baler w/ Monitor (2700Bales)
- 2019 Sitrex Explorer MX 8-10 10Wheel V Rake
- 2019 Frontier Tedder* JD 630 Discbine* 9'x 36" Field Roller*
- 4' Yard Roller* 22' Bumper Double Axle Tilt Bed Trailer*
- 2003 GMC Envoy SLT w/ Sunroof, Leather & Rebuilt Trans
- 2003 PJ 30' Gooseneck Trailer w/ Electric Over Hydraulic Brakes, Flip Down Ramps & Dual Tandems
- 10' Bumper Tilt Trailer* 2 Wheel Tilt Trailer*
- JD 850 Gas 4x4 Gator* Kubota ZD21 Dsl 54" Zero Turn*
- 500gal Sprayer Rig w/ 40' Booms* 2 Rolls Netwrap
- 100 Net Wrapped 4x5 Bales Orchard Grass & Brome*



Plus More!

www.glenworth.com

Tools, Lawn & Garden

- Chains & Boomers* 12v Sprayer* Alum Toolbox- Like New Alum Fold Up Ladder* Tackleboxes



Guns, Collectibles & Household

- Colt New Frontier 22LR* Colt Frontier Scout Nickel Finish 22LR*
- Colt Frontier Scout Commemorative Nathan Bedford Forrest Model Gold Finish 22LR
- Ruger Blackhawk Model 60306 357mag* S&W Model 22 45acp
- S&W 38sp Airweight* Ruger M77 Hawkeye 308win
- Ruger M77 Hawkeye 243* Rem 700 222rem cal*
- Ruger Ranch Mini 14 223* Win Model 94 Lever Action 30-30
- Marlin Golden 39A Mountie Lever Action Gold Trigger 22S/L/LR
- Marlin Model 1894CL Classic 32-20* Integrity Cannon Gun Safe
- Sightron Series SII 4-16x42mm Scope*
- Sightron Series SIH 4-12x40mm Scope* Ruger Scope Mounts
- Ammo- 222, 223, 243, 308, 38, 357, 45acp & 45Auto
- 3 Western Saddles & Racks* Several Arrowheads & Marbles
- 200+ Western & Mystery Books* Gun Trader- Edition 24 & 39
- Shooter Bibles- Editions 68 & 107* Beer Taps
- 300 Decanters(Mostly Jim Beam)- Cars, Trains, Ducks, Fish, Cowboys, Indians, Etc



Auction Conducted by:

Glenworth

Auction Service & Realty
Glen Yutz, Auctioneer/Broker

Member of:
Missouri Professional Auctioneers Association
Licensed in Missouri & Arkansas



Phone: (417) 767-4345

Fax: (417) 767-4222

Not responsible for accidents. Announcements made day of sale take precedence over any printed matter.
Terms: CASH or CHECK Visit our website for more information at www.glenworth.com Lunch available

R&R AUCTION SERVICE

CONSIGNMENT AUCTION

FRIDAY, SEPTEMBER 3RD • 6PM

R&R Auction House • 1644 South Ash in Buffalo, MO

The R&R Auction House is loaded down with items for our Spectacular September 3rd sale!

We are packed full of cast iron collectibles, old toys, tins, bottles, great furniture, treadle sewing machine, depression glass, carnival glass, jadite, crock jug, pottery, Red Ryder bb gun in box with comic, New 12 gauge Dickinson shotgun in case, (old Buffalo, MO annuals), Patriot gun safe w/90 minute burn rating, slave shackles, 1 quart churn, banks, Beehive, Bee smokers, old books, toy train set, safe, lots of cookie jars, vintage Bank bag, scale, child's chair, metal sign, home decor, canes and walking sticks, file cabinets, small kitchen appliances, vintage floor lamps, copper bird bath, park benches, kitchen items and general household items, reproduction prints, old postcards, old paper goods, tools, dolls, Indian Head pennies, Buffalo nickels, other old coins, several showcase items including watches jewelry, concrete and large ceramic dog and much more!

We're blasting off into September with this great consignment auction!



TERMS: 10% buyers premium. Cash, check, or credit card with proper I.D. nothing removed until settled for A 3% fee will be added to credit card purchases. Not responsible for errors in listing. Any announcement made sale day will take precedence over any printed matter. **Note:** Service will take every precaution to prevent accidents, but will not be responsible should any occur.

STORAGE AUCTION

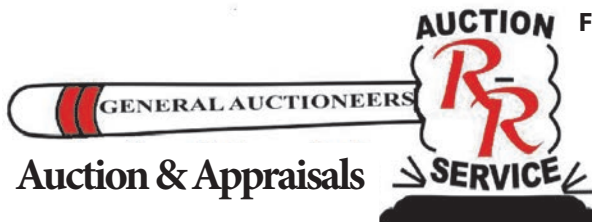
SATURDAY SEPTEMBER 11TH • 10AM

1658 South Ash in Buffalo, MO

CURRENTLY 6 UNITS WILL BE SOLD



Cash Only!



For more information contact Professional Auctioneer Russ Weeks at 417-576-7357 or check out www.rrauctionservice.com

Serving this area's auction needs since 1997 with honesty and professionalism.

www.rrauctionservice.com

(417) 576-7357 or (417) 345-4140



BUILDING SUPPLY AUCTION



SATURDAY, SEPTEMBER 11TH • 9:30 AM

Baxter Springs, Kansas

2404 Cleveland • Baxter Springs, KS • Corner of 24th & Cleveland, 3 blocks E of 69A on 24th St

SALE HELD INSIDE REGARDLESS OF WEATHER

- ♦ **DIMENSIONAL LUMBER** – 2x8's and 2x4's
- ♦ **PINE** – 1x8 and 1x6 T&G
- ♦ **WESTERN CEDAR** – 5/4 Decking, 1x6 T&G, 1x8 beveled lap siding
- ♦ **ALASKAN CEDAR** – 5/4 decking
- ♦ **SOLAR PANELS**
- ♦ **INSULATION SHEATHING with Shiplap Edge** – 1/2, 3/4 & 1" thickness in 4'x8', 4'x9' & 4'x10' sheets – foil on one side/tar paper on the other
- ♦ **CULTURED STONE** – good selection of colors
- ♦ **DECKING** – Duralife composite – including fascia in some colors
- ♦ **COMPOSITE DECKING TILES** – Interlocking 12x12 tiles - Redwood color – great for patios, verandas and virtually any level concrete or gravel surface
- ♦ **TJI's/I-JOISTS** – LVLs – GLULAMs – PARALLAMs
- ♦ **OSB** – 3/4" T&G
- ♦ **LP SmartSide 190 Series Trim** - cedar texture
- ♦ **Pine 1x's**
- ♦ **6x6 PARALLAMs**
- ♦ **4x4 PARALLAMs and POSTS**
- ♦ **BRICK and CEMENT BLOCKS**
- ♦ **VINYL SIDING** – CertainTeed Brand - available in several colors -
- ♦ **FIBER CEMENT SIDING** 1x6 1/4", 4x8 smooth – great opportunity.
- ♦ **HARDIE BATTON STRIPS AND TRIM BOARDS**
- ♦ **PREFINISHED FIBER CEMENT SHAKE SIDING**
- ♦ **ICE AND WATER SHIELD**
- ♦ **HOUSE WRAP**
- ♦ **BARN WOOD DOORS** - real wood doors
- ♦ **PEX TUBING 1/2"** - red and blue
- ♦ **INSULATION** –R13, R15 and R19 bats; 5' and 6' wide rolls of r10 – r11.9 – r13 insulation
- ♦ **PULLDOWN KITCHEN FAUCETS**
- ♦ **NEW DELTA, MOEN, and HOME IMPRESSIONS FAUCETS:** Vanity and kitchen (NIB) – large selection to choose from
- ♦ **APPLIANCES: NEW** – Gas Dryer
- ♦ **WIRE CLOSET SHELVING:** 12" and 16"x12' wire closet shelving.
- ♦ **FANCY CHANDELIERS AND WALL SCONCES:** Variety of really nice fixtures – retailing \$900-\$3,000.
- ♦ **VINYL WINDOWS:** New -JELDWEN -new construction - single hung – vinyl insulated windows
- ♦ **KITCHEN CABINETS:** Multiple sets of cabinets – option of stained and painted including: Signature Pearl, Farmhouse Brown, AND Shaker Style in Dark Gray, Light Gray, and White - all wood – prefinished cabinets. Straight and L shaped sets. Some sets include soft close doors and dovetailed drawers.
- ♦ **VANITIES** – Nice selection of vanities including matching vanities for the Farmhouse Brown, Dark Gray, Light Gray, and White cabinets
- ♦ **PORCELAIN TILE:** OVER 15,000 SQ FT with many, many, sizes and colors of tile to choose from.
- ♦ **MOSAIC TILE:** Fantastic selection of glass – travertine – marble – tile – stone including Subway Tile.
- ♦ **WOOD LOOK TILE:** Great selection of styles and colors
- ♦ **Hardwood Flooring including :**
 - ♦ 7" WIDE PLANK WHITE OAK
- ♦ **UNFINISHED OAK FLOORING:** Dual faced engineered back flooring – T&G – beveled edge
- ♦ **PREFINISHED HARDWOOD FLOORING:** 3/4" solid prefinished hardwood floor –including hickory, oak, maple etc.
- ♦ **7" wide 1/2" thick PREFINISHED PLANK WOOD FLOORING** – hand scraped, wire brush and matte finishes
- ♦ **SNAP AND LOCK LAMINATE** – small lots
- ♦ **LVT:** over 10,000 SQ FT of luxury vinyl tile – wood plank – snap lock and glue down - great selection of colors
- ♦ **LVT ACRYLIC ADHESIVE – VMI 91** covers 1,200 sq ft per bucket
- ♦ **EXTERIOR DOOR UNITS:** Singles – double – with and without glass
- ♦ **INTERIOR DOOR UNITS AND SLABS**
- ♦ **TRIM: BASE – CASING – CROWN: MDF,** finger joint PINE and OAK; AS WELL AS OAK quarter round, cove, base shoe, and door stop.
- ♦ **ENTRY – PASSAGE – PRIVACY DOOR KNOBS AND LOCKS**
- ♦ **QUARTZ:** Maple White in various sizes – countertops – island panels, with and w/o sink cutouts. 3cm quartz
- ♦ **VANITY TOPS** available in QUARTZ, MARBLE and TRAVERTINE – includes undermount, overmount, and vessel style tops
- ♦ **KITCHEN SINKS:** SS – Composite – varying styles and colors.
- ♦ **CEILING FANS** - nice selection
- ♦ **TOILETS**
- ♦ **PEDESTAL SINKS**
- ♦ **MINI SPLIT AIR CONDITIONERS/HEAT PUMP** – 12,000 BTU - Indoor Units
- ♦ **TOWEL BARS and RINGS, TOILET PAPER**

• No Buyer's Premium • MORE COMING IN DAILY - check sites often

For pictures see Mt. Vernon Auction Company on Auctionzip.com (enter ID#29728 at bottom of page) or Facebook
CELL 870-754-4428 • 870-715-5479 • 870-715-2326 (text only) • All items left over 30 days will be forfeited!!!

COME FOR THE DAY AND SAVE LOTS AND LOTS OF \$

— MT. VERNON AUCTION CENTER —

CONTACTS - CALL OR TEXT MIKE @ 870-754-4428 • TEXT ONLY @ 870-715-5479 or 870-715-2326



All announcements made the day of auction will supersede previous advertising.

TURN KEY WORKING CATTLE FARM!

Auction

SEPTEMBER 11, 2021 AT 10:00 AM

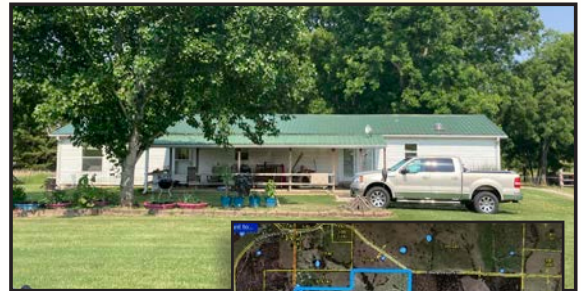
RT 3 BOX 217A, AVA, MO 65608 **REAL ESTATE SELLS AT 12 SHARP**

Directions: From Ava, take West 76 for approximately 13 miles, then turn right onto DD, drive 3 miles then turn left on to county road 434, in about 0.4 miles turn right and then drive 0.3 miles

We will be taking bids on this 225 acre m/l farm. There is a newly renovated modular home, shop, tractors, equipment, trailers, cattle, and more as a turn key working farm! Bids will be taken and considered up until September 11, 2021 at auction time. Property will be auctioned again at 12 NOON sharp. **Live auction will begin at 10:00 AM**

The property is just off the highway approximately 1/4 mile, there is county road access on multiple sides. The home, shop, and working facilities lie in the middle of the property for added privacy. This property is fenced and cross fences with auto waterers in most pastures. There are many year round springs and spring fed ponds. Approximately 70% open pasture and 30% wooded. There is some very mature timber as well! Abundant wildlife with deer, turkey, quail, and more! There are approximately 45 head of cattle on the property now that would go with it if sold as turn key operation.

Real Estate terms: 10% down due day of auction w/ bank approval letter.



EQUIPMENT & HOUSEHOLD

2018 New Holland T4 110 4x4 cab (under 1000 hrs) & 655 TL loader	hog Homemade trailer 1994 WW Stock trailer HMO utility trailer	Calf pullers Approx 200 NEW t-posts 3 pt hay spike 2- 2 ton bulk feeders 600 lb creep feeder 6' rock rake 250 gal boom sprayer Danuser 3 pt auger New Holland 256 hay rake GEHL manure spreader 3 pt carryall 3 pt bale unroller 4- mineral feeders 3- multi hay mangers 2- covered mineral feeders 10' field roller Large field roller Box blade Chute -working pen 10- Poly hay rings	6' feed tank Field drags Stock tanks Mare breeding chute Round bale feeders Large metal hay feeders 22 ft long Round pen panels Salt block holders 200+ square bales alfalfa 30-50 round bales alfalfa mix Carpentry tools Body shop tools Cyclone leaf collector Rolls barbed wire Small freezer Furniture Washer/dryer Refrigerator
2019 New Holland Workmaster tractor 60 hp (only 200 hrs)	AG Pro 60 gal Slide in sprayer 250 lb 3 pt seeder Table saw Danuser T3 t-post driver (2020) 60 gal fuel tank Stihl HT 132 pole saw Stihl HT 130 pole saw 28' & 20' fiberglass extension ladders DR trimmer Honda push mower Husqvarna 455 Rancher chainsaw 4500 kw generator (WEN)		
2016 Polaris four wheeler			
2018 Kawasaki Mule ProFx Cold Weather pkg			
2010 Harley Davidson Electra glide SS			
2016 CanAm Spider			
2012 Kaufmann 34' tandem axle flatbed			
2007 Loadmax 25' flatbed trailer			
20' tri axle gooseneck flatbed			
Woods 15' batwing bush	6 ton & 2 ton feed bins		

HORSES

7 registered cow horses, 1 unregistered mare, 2 registered studs. All mares have been exposed.

All livestock and tractors sell immediately following the real estate at 12:00



FOR MORE PHOTOS, VISIT OUR WEBSITE CHEYNEYAUCTIONS.COM OR FIND US ON FACEBOOK!

Auctioneer's Note: If the real estate does NOT sell, NO HOUSEHOLD items will be auctioned. All items in this auction are immaculate, one of the cleanest farm auctions you'll ever see!



Cheyney Auction Company, LLC
Real Estate • Livestock • Farm & Ranch • Equipment • Household • Antiques
Travis Cheyney, Auctioneer
417-543-8751 • cheyneyauctions.com

ANNOUNCEMENTS Made Day Of Sale By Auctioneer Take Precedence over any Printed Matter. Not Responsible For Accidents. All items sold as is, where is, with no guarantee. Terms of sale: cash, credit/debit card, or check with valid ID

CONSIGNMENT AUCTION

Auction

SEPTEMBER 4, 2021 AT 10:00 AM

304 SPRINGFIELD RD AVA, MO 65608

Located across from Town and Country Supermarket in Ava, MO

Firearms sell at 12:00 Sharp followed by outside equipment

Autos • Tractors • Farm Equipment • Boats • Furniture • Firearms • Antiques • Household

FURNITURE

Dining table and chairs
Recliner
Rocking Chair
Patio Furniture
Dressers
Microwave Stand
Desk
Chairs
End tables
Microwave
Stove
Dryer
Air conditioners
Couches
Fireplace
Dishwasher
Sinks
Mini Fridge
Entertainment Center
Tv stands
Buffet
Large Pella window
Kitchen island
Chaise & ottoman
Entry table
Rocking horse
Exercise equipment
2 Curio Cabinets
Filing cabinets
Old Candy Machine
Coffee Table
Shelves
China Cabinet

HOUSEHOLD & OTHER ITEMS

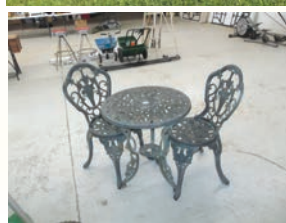
Garden & yard tools
Bird cages
Chainsaw
Push lawnmower
Mason jars
Virtual Reality
Games
Antique pictures
Lamp
Pandigital
Video camera
Wet Dry Vac
Carpet Shampooer
Vacuums
Purses (Kate Spade, Coach, etc)
Antique Collectibles
Cookware
Dishes

FIREARMS

Remington Model 700 ML12 Gauge
shot gun
Winchester Model 270
Savage model 110 7mm mag w/BSA
6x24x40 scope
Winchester 88 cal .380
Remington Model 22
Pistol
Empire State Arms Co
Hawken Rifle .54 cal
Mod 98
20 gauge shot gun

AUTO

2002 Chrysler PT Cruiser 4 door
1999 Chrysler Sebring 2 door coupe
2013 Ford F150 Pickup
2015 VW Beetle convertible, low miles (salvage title)
2017 Big Tex Utility Trailer
2015 Covered Wagon (Cargo) Trailer
2000 Cargo trailer
2002 18' tandem flatbed
Lowe 170 Aluminum boat
w/ 70 Evinrude motor
1987 King Fisher 17'
Bassboat w/ 150 Mariner
Magnum motor
1988 Aluminum flat bottom
w/ 40 Evinrude motor



FARMING EQUIPMENT

John Deere 3025 E Compact Utility Tractor (17 PTO hp) hydrostatic transmission
John Deere D160 Loader
John Deere Bush Hog
John Deere Bale Spike (Double)
New Holland 545D 4x4 tractor w/ front end loader, 6' Bush hog
610 Long tractor

MORE ITEMS BEING ADDED DAILY!

FOR MORE PHOTOS, VISIT OUR WEBSITE CHEYNEAUCTIONS.COM OR FIND US ON FACEBOOK!

Auctioneer's Note: There are some very nice furniture pieces in this auction, along with some very well kept vehicles and equipment. This will be a great auction to kick off our fall season! There will be concessions so come and enjoy the day with us. Hope to see you there



Cheyney Auction Company, LLC

Real Estate • Livestock • Farm & Ranch • Equipment • Household • Antiques

Travis Cheyney, Auctioneer

417-543-8751 • cheyneyauctions.com

ANNOUNCEMENTS Made Day Of Sale By Auctioneer Take Precedence over any Printed Matter. Not Responsible For Accidents. All items sold as is, where is, with no guarantee. Terms of sale: cash, credit/debit card, or check with valid ID

5TH ANNUAL FFA CONSIGNMENT AUCTION

Saturday, September 4th, 2021 ~ 10:00 AM

LOCATION: 291 South Hwy 83, Wheatland, MO; Empty Lot Near High School Gym At Wheatland High School (Watch For Signs)

Auction For Wheatland FFA



Furniture, Appliances, Antiques & Collectibles

Old Crock Pcs Inc #5 Redwing Churn, #4 Salt Glaze Butterfly Churn, #3 Salt Glaze Bee Sting Crock, #4 Acorn UHL Pottery Churn, #4 Mammoth Churn, #3 Elephant Ear Redwing Jug, #2 Western Jug, & Others, Cast Iron Signs & Pcs Inc Railroad, Farmall, Massey Ferguson, Mustang, Wells Fargo Dog Boot Scraper, Cast Banks Inc Donald Trump, Michelin Man, Pig, Luca Libre Mechanical Bank, Carl Edwards Nascar #10 Of 99 Plaque, Treadle Sewing Cabinet Drawers, Lion Knick Knack Collection, Round Wooden Box, Daisy Churn Tops, Old Singletree, Pots, Pans, Dishes Of Various Kinds, Old Jewelry, Embroidery Pcs, Anniversary Clock, Wood Sewing Basket, Happy Lock Surger, Graniteware Pot W/Lid, Sm Kitchen Appliances, Old Jars, Puzzles & Games, Rolling Pins, Electric Heater, Musical Carousel, 2 Cushion Couch, Wood End Tables, Wood & Wicker Kitchen Chairs & Other Primitive Chairs, Wicker Basket, Whirlpool

Electric Cook Stove, Kid's Toys, Turtle Sandbox W/Lid, Graco Baby Carriage, Christmas Decor & Items Inc Nativity Sets, Coca Cola Pitcher & Glass Set, Misc Sewing & Craft Items, Old Glassware & Collectibles, Kid's Chairs, Metal Glass Display Cabinet, File Cabinets, Digital Camera, 2 Sets Of Accordion Closet Doors W/Hardware, 3 Wheatland Mules Blue Birdhouses, Treadmill, Exercise Bike, Other Items Not Listed

Hog Feeder, Bale Rings, Tools & Outdoor Related Items

2 Round Bale Rings, Water Tank, 11 Hole Hog Feeder, 2- 16.9-30 Tractor Tires, Reese Hitch, Radial Arm Saw, New In Box Deer Stand, Another Ladder Tree Stand, Boat Seat, Kerosene Burners, Camo Seat, Patio & Outdoor Furniture, Patio Table Cover, Umbrella Stand Holder, Propane BBQ Grill, Master Built Electric Smoker, 2x5 Deck Storage Bin, Outdoor Rocking Chairs W/Cushions, Wheelbarrow, Schwinn & White River Mountain Bikes, Plastic Crates, Tubs, Gas Cans, Other Items Not Listed



Auctioneers Note: It Is An Honor To Be Conducting The 5th Annual Wheatland FFA Consignment Auction. There Will Be Something Here For Everyone. This Is Only A Small Listing As There Will Be Hundreds Of Items Added Sale Day. Remember 100% Of Commission From Sale Goes To The FFA!!!! **Sale Order:** There Will Be No Specific Sale Order As Items Are Consigned By Different People. See Ya There!!!

Terms: Cash or check with proper ID. Now accepting most major credit cards. Nothing removed until settled for. Statements made the day of sale takes precedence over printed material. Everything sold as is where is. Not responsible for accidents. Restroom available. Concessions Provided. Check our website for upcoming auctions and for additional pictures!!!



NANCE AUCTION SERVICE

No Matter How BIG or small, We Do Them All!!!

Col. Bill Nance 417-214-0093

LABOR DAY ESTATE AUCTION

Monday, September 6th, 2021 ~ 10:00 AM

LOCATION: Sheldon Community Building, 6th & Main, Sheldon, MO (Watch For Signs)

Auction For The Late Fred "Bud" & Rose Hervey



Antique Furniture, Also Coins & Currency

Very Rare 1800's Oak Bank Drawer Sorter Cabinet (Very Unusual), Rare 1800's Store Countertop Display Case (French?), Ant Oak Spool Cabinet, Ant Oak 2 Door Knock Down Wardrobe, Ant Eastlake Furniture Inc Sauttee, Loveseat & Chair, Ant Buffet, 2 Ornate Ant Washstands, Ant Long Sauttee Bench, Rare Very Old Chuck Wagon Or Stagecoach Wood Box, Ant Pie Type Cabinet, Ant Wood Dry Rack, Ant Wood Lap Desk From RXR Or Gas Station, Retro Drop Leaf Breakfast Table, Several Other Ant Tables & Prim Furniture Pcs, Ant Iron Bed, Old Store Women's Bust On Stand, Ant Metal Fans, 1800's Student Desk Lamp, Bradley & Hubbard Electric Converted Baby Face Lamp, Several Very Unique Ant Pictures & Mirrors, 2 Very Rare 1757 US Minted Indian Trade Dollars Distributed To Indian Tribes By Ben Franklin, 1870 Three Cent Nickel, 1868 Shield Nickel, Approx 10 Silver Dollars, Several Silver Dimes, V & Jefferson Nickels, Buffalo Nickels, Jar Of Wheat Pennies, Rolls Of Lincoln Cents, 12 Old Silver Certificates, Other Items Not Listed

Antiques, Primitives, Crock, & Hard To Find Collectibles

Approx 25 Rare Crock Inc #3 Bee Sting, #2 Bow, #5 Redwing Crock Jug, #12 UHL, #8 Western, #10 & #6 Elephant Ear, #4 Glaze Redwing, #5 Bee Sting Churn, #4 & #5 Churns, #10 Western, & Others, 4 Rare Hard To Find Lightening Rod Weather Vanes W/Bulbs, Rare Ant RxR Steam Engine Gauges, Other RxR Collectibles Inc Lanterns, Pewter Type Iron Toy Soldiers, Rare Climax Plug Pouch, Old Coca Cola Store Cooler, Over 50+ Very Old & Rare Collector Jars, Rare Soda Pop & Other Bottles, Adv Washboards, Ant Stone Grinder Wheel (Works), Old Metal Toys, Rare Double Sided Lawn Boy Factory Display Sign, Rare Electric Huffy Push Mower, Rare 1800's Ivory Handle Carousel, Rare American State Bank Plate Glass, Rare EN-AR-CO Motor Oil Thermometer, Rare Store Counter Candy Jar, Crock Bowls & Other Crock Pcs, Galvanized Pcs Inc Oval Wash Tub & 2 Gal Water Dispenser, Cast Iron Pcs Inc Griswold, Aunt Jemima Measuring Set, Uncle Mose & Aunt Jemima Creamer Set, Rare Wooden Black

Americana Bellhop Jacket Dust Brooms, Lg Lot Of Rare Aunt Jemima Collectibles, Black Americana Pictures & Post Cards, Lg Lot Of Old Adv Yardsticks, Old Gunny Sacks Some W/Original Tags, Metal Pig & Metal Horse Weather Vanes, Iron Country Store String Holder, 2 Man Cross Cut Saw, Ice Saw, Several Prim Tools, Ant Metal Stamp Set, Ant Corn Planters, Several Rare Wood Adv Boxes, Several Rare Adv Tins Inc Coffee, Lard & Others, Old Quilts & Linens, Jadite Refrigerator Dish Set, Several Colored Pyrex & Fire King Dishes, Rare Hunting Dog Silver & Signed Bookends, 2 Old Chicken Coops 1 W/Great Advertising, Wooden Star Egg Carrier, Wholesome Bread Sign, Wire Egg Basket & Other Metal Baskets, Jewel T Pcs Inc Rare Sifter, Ant Bikes, Ant Coolers, Old Car Parts, Old Hay Hooks, Old Records Inc Elvis First Record On Sun 45 "That's Alright", Old Dolls, War Time Binoculars, Old Coffee Grinder, Old Metal Canister Set, Old Barbed Wire, Old Christmas Ornaments, Old Metal Guitar & Metal Xylophone, Other Items Not Listed

Guns, Hunting, Fishing, Arrowheads, Truck, Log Splitter, Tools & Outdoor

1991 Dodge Dakota 4x4 Extended Cab Truck W/V8 Motor Only 141,000 Original Miles (Very Clean), Heavy Duty Gas Powered Portable Log Splitter, Pull Behind Grass Seeder, Lots Of Sm Garage & Mechanic Tools Not Listed, Parker Brothers Double Barrel Hammer Shotgun, M71 Single Shot Military Rifle, Win Model XTR300 Weatherby Magnum Rifle, Win Model 94AE 30-30 W/Scope, Win Model 97 Full Choke 12 Ga Pump, Mossberg 100 ATR 30-06 W/ Scope, Rem Model 24 Short Only 22 Rifle, Ithaca Model M49 Short Long 22 Rifle, Iver Johnson 12 Ga Single Shot, H&W 38 Special, Starter Gun 22 Cal, GAMO .177 Pellet Rifle W/Scope, Some Ammo Of Various Kinds, Rare Sabre Knives Display Cabinet W/Knives In It, Old Pocket Knives Inc Win & Others, Old Ammo Adv Boxes, Ant Wood Gun Case, Several Ant Fishing Lures & Reels Some W/Original Boxes, Old Fishing Poles, Ant 40's Kerosene Lantern Never Used In Original Box, Vintage Hunting & Fishing Collectibles, Arrowhead Collection, Old Stone Indian Tools, Other Items Not Listed

Auctioneers Note: WOW!!! What An Amazing Auction We Have For You On Labor Day. This Is The Very Best Antique Auction We Have Conducted This Year. If You Are Looking For Very Rare & Hard To Find Items We Will Have It Here. The Hervey's Were Collectors For Many Years & It Is An Honor To Be Conducting This Auction For The Family. Around 70% Of Items In Auction Have Originated From MN & Has Been Stored In Barn For Years. Very Rare Opportunity On Sale Day. Excellent Guns, Knives & Hunting Items As Well. Please Plan Now To Attend. **Sale Order: Furniture Will Sell First Then Coins & Currency Then Will Move Into Antiques & Primitives. At Approx 1:00 PM Will Offer Truck, Log Splitter, Then Guns, Ammo, Hunting & Fishing Related Items. Remainder Of Tools & Outdoor Will Finish Auction. See Ya There!!!**

Terms: Cash or check with proper ID. Now accepting most major credit cards. Nothing removed until settled for. Statements made the day of sale takes precedence over printed material. Everything sold as is where is. Not responsible for accidents. Restroom available. Concessions Provided By Barker Concessions. Check our website for upcoming auctions and for additional pictures!!!



NANCE AUCTION SERVICE

No Matter How BIG or small, We Do Them All!!!

Col. Bill Nance 417-214-0093

In God We Trust

Philippians 4:13

ANNUAL LABOR DAY AUCTION

Monday, September 6th, 2021

9:00 A.M.

The Moffat Center • 467 County Road 604, Linn, MO

Directions: From Linn, take Hwy. 50 west 1 ½ mi. to County Road 604, turn left & go 1 mile to building on right, or from Jeff City, take Hwy. 50 east approx. 18 mi. & turn right on County Road 604

AUTOMOBILES

2010 Lincoln Town Car; 1999 Mercury Sable & 1998 Honda Civic;

ANTIQUES & COLLECTIBLES, ADV. SIGNS – SOME PORCELAIN, ADV. CLOCKS, ANTIQUE FURNITURE – MARBLE TOP AND WALNUT, PEDAL CAR, FRUIT JAR COLLECTION, BOTTLE COLLECTION, HEAD VASE COLLECTION, SPOOL CABINETS, GUNS, SIGNED PRO SPORTS JERSEYS, GUNSAFE, TOOLS, QUALITY ETHAN ALLEN FURNISHINGS & FURNITURE, COINS, HOUSEHOLD & APPLIANCES.

SEE WWW.MOFFATAUCTION.COM FOR COMPLETE LISTING & PICTURES



OWNERS: SHIRLEY MERKL, RISSE FAMILY & OTHERS

NOTE: This is a VERY LARGE auction. There will be two auction rings most of the day. We are selling two estates from Jefferson City and an antique collection from Franklin County. There are lots of old antiques in this auction. As always, some of our best items SELL AT OUR HOLIDAY AUCTIONS. BOTH BARNs WILL BE FULL AND THERE WILL BE TRAILERS OUTSIDE. PLEASE BRING A FRIEND. THANKS – RICK

RICHARD MOFFAT AUCTION SERVICE



573-761-4293
Jefferson City, MO

Auctioneers:
Richard Moffat & BJ Moffat
www.moffatauction.com

573-690-2823
Linn, MO



Sam CRAWFORD AUCTION SERVICE LLC MACHINERY AUCTION

Will sell the following located 5 miles North of Cross Timbers, MO on Hwy. 65 - Watch for auction signs

MONDAY, SEPTEMBER 6th, 2021 - 9:00 A.M.

COINS - GUNS - TRACTORS - TRAILERS - TOOLS - MISC.



Coins - Sell at 9 AM

(64) Indian Head Pennies
1876-CC Seated Dime
1891-P Seated Dime
(14) 1957 Silver Certificates
1955 Silver Proof Set, Other Proof Sets
Silver Eagles 2010-2014
1878-82-90-91 CC Silver Dollars
(15-20) Other Morgan & Peace Dollars
1878 & Up
1885 5 Dollar Liberty Gold
1914 5 Dollar Indian Gold

Guns - Sell at 9 AM

Ruger "Security Six" 357 Stainless
Beretta PX4-Storm 9mm
Llama 44 Mag.
Kimber Solo Carry 9mm
Remington 783 7mm Rem. Mag, Weaver Scope
Ruger 10-22 Carbine 40th Anniv.
Winchester 94 30-30 Cowboy Comm.
Ithaca 37 12 Ga. 2 $\frac{3}{4}$
Remington 870 12 Ga. Mag
Remington 783 30-06
New Haven 12 Ga. Double Barrel
H & R 20 Ga. Single Shot
Winchester 94 AE 30-30 NIB
Marlin 60W 22 LR
Marlin 1895 45-70
Lots Asst. Ammo 22-9mm-40-44 Mag-45-357-380 etc.
Set AGI Gunsmithing Videos & Manuals
Portable Vehicle Gun Safe

Selling For Wanda Sherman

Massey Ferguson 135 Gas, Shredded & Good
New Idea Side Rake
Brave Wood Splitter
Swisher Wood Splitter

TRACTORS

New Holland T475 Cab 4x4, 74 Engine HP, Like New, 655TL Loader Under 200 Hrs.
IH 574 Gas, Power Steering
MF 135 Gas, Not Running
Ford 9N, Not Running
Allis Chalmers 170 Diesel, With Loader
Oliver 1650 Gas, With Loader
Farmall Cub



S130 Bobcat Skid Steer, 3700 Hrs.
Post Auger 12"
Forks
6' Rock Bucket

Machinery

Titan Skid Steer Hyd. Blade, New
Bison HD 3 Pt. Blade, Hyd. Tilt & Angle
Danuser 3 Pt. HD Post Auger
Hyd. Post Auger for Skid Steer
NH 1002 Bale Wagon
NH 488 9' Haybine
NH 499 Hyd. Swing Haybine
NH 451 9' Sickle Bar Mower w/Extra Sections & All Manuals
Hesston 5580 & 5500 Round Balers
(2) NI Side Rakes
John Deere 1518 Folding 15' Cutter
3 Pt. Scoop
Bale Spike For Loader
10' Bush Hog Pull

6' 3 Pt. Bush Hog
3 Pt. Disk 6'
3 Pt. Box Blade
14' Jon Boat w/25 HP Mercury Motor

MISCELLANEOUS

Lot Used Steel Post
'58 Cushman Scooter - In Pieces
Poly Creep Feeder - Single Side
20' Trailer Frame
5-6 Ally Way Sliding Gates
2 Older Dixon Riding Mowers
Yard Machine Riding Mower
Cub Cadet Lawn Tractor
150 Gal. Propane Tank
Lot Asst. Tools
Old Wisconsin Air-Cooled Motor on Cart (Not Running)

VEHICLES & TRAILERS

'79 Chevrolet C-60 Single Axle V-8, Gas w/New Leader L2010 Spreader Box, Truck Runs Good, Needs Brake Work, Bed is Fair
'94 Chevrolet 1 Ton 2x4, V-8, Flatbed
'04 Chevrolet Colorado, 4x4, Crew Cab
'79 IH Twin Screw Diesel, Auto, w/26' Roll Back Bed
'73 Chevrolet Single Axle Grain Truck, 14' Grain Bed & Hoist, V-8, 4-2 Speed, Good Truck
'67 Chevrolet Single Axle Grain Truck, 6 Cyl., 4-2 Speed, Grain Bed & Hoist Runs Good
2001 Chevrolet Blazer, 4x4, 6 Cyl., 166K
Ponderosa 20' Gooseneck 3 Horse Slant Trailer w/Front Quarters, Roof, A/C
Gooseneck 24' Horse Stock Trailer, Front Dressing Room

Sam CRAWFORD Auction Service LLC



TERMS: Cash or good check. Nothing removed until settled for. Not responsible for accidents. Lunch available. Statements made day of sale take precedence over printed matter. All items sell as is. No warranties given or implied.

417-998-6629
Cross Timbers, Mo.

CrawfordAuctionService.com

Sam
417-328-9137

Chase
417-399-1904

Chance, CAI
417-298-1751

Tom Poynter
Jack Lancaster

Sam CRAWFORD AUCTION SERVICE LLC

Will sell the following located at the west edge of Marionville, MO on Hwy. 60 to Central St. then north 2 miles. Watch for auction signs.

SATURDAY, SEPTEMBER 11th, 2021 - 9:30 AM

REAL ESTATE - TRACTORS - MACHINERY - TOOLS - HOUSEHOLD - GUNS - MISC.



REAL ESTATE - SELLS 12 NOON

65 Acre Farm & Improvements - Approx. 55 Open in Hay & Pastures - Most Could Be Tillable - Fenced & Cross-Fenced - County Road on 3 Sides - 4 Bedroom - 2 Bath - 2800 Sq. Ft. Home - Partial Earth Contact - Central Heat & Air - Storm Shelter - Morton Type Shop (2750+ sq. ft.) - Shop/Garage (1720+ sq. ft.) - Well - Lot Flowers & Shrubs - Fruit Trees - Marionville School - Taxes \$1403 - 500 Gal. Propane Tank Sells After Farm - A Really Nice Property That Was Well Built & Is Well Cared For - Lots of Potential Here - Shown By Appt. With Auctioneers

GUNS - SELL @ 9:30

Smith & Wesson 17-4 22 LR
Smith & Wesson 629-3 44 Mag, Stainless
Smith & Wesson 586 257 Mag 4" Custom Grip
Smith & Wesson 36 38 Special
Smith & Wesson 12-3 38 Special, Airweight
Walther - Smith & Wesson P99 9 mm Germany
Kimber Tactical Pro II 9 mm
Winchester 94 AE 357 mag
Winchester 99 24 22 Mag
Winchester 1300 12 Ga.
Remington Gun Safe 120+ Gun, Like New
Turret T-7 Reloading Press - New Dies for 357 Mag. - 38 Special - 9 mm Other Asst. Reloading Equipment

TRACTORS - EQUIPMENT TRAILERS

SELL NEAR 12:45

Ford 6610 Diesel, 8 Speed, 82 HP Engine, ROPS/Canopy, Runs Good
Rod 4000 (Industrial) Gas w/Front Loader, 8 Speed, ROPS/Canopy, 50 HP, Runs Good
Brush Hog 3210 10" Pull Type
Brush Cutter, Good Shape
3 Pt. HD Bale Fork
3 Pt. Post Hole Digger
Older 3 pt. 7" Sidewinder Brush Cutter
Older John Deere 7' Hay Crimper

Shop Built GN 18' Flatbed Trailer
Shop Built 12' Single Axle Alum. Utility Trailer, 7' Wide
Pony Express 14' Bumper Hitch Stock Trailer

LAWN EQUIPMENT TOOLS & MISC.

Bush Hog TH440 UTV 4x4, Honda 17 HP, 326 Hrs.
Yard Machine 21 Ton Wood Splitter, B/S Motor
Scag Wildcat ZTR 61" 25 HP Kohler, New Engine
Scag Tiger ZTR 72" Kawasaki Motor
Snapper 10 HP Rear Engine Mower
Ariens Rear Tine Tiller, 8 HP Kohler
12V Pull Type Sprayer w/Boom
Backpack Sprayer
Greenworks Electric Push Mower
Greenworks Cordless Trimmer
Lawn Cart
Yard Wagon
Older Club Car Gas Golf Cart, Not Running
Stihl 024 & MS 192 Chainsaws
Stihl FS36 Trimmer
Craftsman 10" Radial Arm Saw
Sears 10" Tablesaw
Grizzly 1 1/2 HP Shaper
Honda EM7000 Portable Generator
Delta Unisaw 10" Cabinet Table Saw
DeWalt Air Compressor
Craftsman 6.8 Air Compressor, 33 Gal.
2 Sheet Rock Jacks
2 Section Scaffold
24' Fiberglass Extension Ladder
Other Ladders

Extension Cords
100' HD Cord for Welder
BBQ Gas Bottles
2 Floor Jacks (1 Alum)
Explitz Tile Saw
Bench Grinder
Chainsaw Sharpener
Lot Asst. Wrenches
Some Sockets
3/4 Socket Set
Some Power Hand Tools
Some Air Tools
Schumaker Battery Charger/Booster
Long Handle Tools
Lot Yard & Garden Supplies
Oil, Anti-Freeze, Etc.
Galvanized Buckets
Steel & Plastic Barrels
Pair Car Ramps
Wood Saw Horses
HD Aluminum Ramps
2 - 100# Gas Bottles
3 Plastic Rain Barrels
Plastic Pickup Tool Box
Concrete Blocks - Pavers
Plastic & Concrete Planters
Bike for 2

SHEDS - FARM MISC.

3 Portable Open Front Sheds for Horses, Approx. 10x12'
25 - 30 Portable Panels 10' & 12'
3 - 4 Poly Water Tanks
Horse Hay Ring, Head Gate
Some Steel Posts,
Some Wire Panels
Wood Mineral Feeder
25 - 30 Sheet Used Metal Roofing
Some Lumber
Longhorn High Back 16" Roping Saddle
Tucker 16" Trail Saddle
Sid Hill & Sons Australian Saddle
Antique Western Saddle
2 Sets Saddle Bags
2 - 3 Saddle Stands
Lot Misc. Tack & Blankets
2 Saddle Trees

ANTIQUES & COLLECTIBLES

Double Rinse Tubs on Stand
Other Tubs
Wringer Washer
Chrome Table & Chairs
Metal Bed
Drop Front Secretary
Philco Cabinet Radio
Wood Cooks Stove (Apt. Size)
Floor Safe
Assorted Wood Chairs & Small Tables
3 - 5 Gal. Milk Cans

HOUSEHOLD

GE Electric Range, Ceramic Top
Maytag Double Door Refrigerator, Bottom Freezer
Kenmore Refrigerator
Samsung Front Load Washer & Dryer
2 Chest Freezers (1 - 6')-(1-2.2 Cu. Ft.)
Wicker Rattan Couch, Chair, Ottoman
Matching Coffee Table, End Table & TV Stand
5-6 Bookcases, 5 File Cabinets
2 Fireproof File Drawers
2 - Queen Size Beds
Lift Chair, Like New
Leather Chair, Couch, Recliner, Ottoman
Elipical, 2 Schwinn Airdynes
Weight Bench, Kitchen Booth
Computer Armoire
Fans & Heaters
Kerosene Heater
Gas BBQ
Lot Fruit Jars
Asst. Dishes, Pots & Pans, Utensils
Lot Folding Chairs, Lawn Chairs, Wrought Iron Table
Good Auction With Lots of Nice Items. Will Be Running 2 Rings In the Morning - Loader on Site Sale Day

Sam CRAWFORD Auction Service LLC

1944 CELEBRATING 77 YEARS 2021
STARTING 77th YEAR OF SALES AND SERVICE

TERMS: Cash or good check. Nothing removed until settled for. Not responsible for accidents. Lunch available. Statements made day of sale take precedence over printed matter. All items sell as is. No warranties given or implied.

417-998-6629
Cross Timbers, Mo.

CrawfordAuctionService.com

Sam
417-328-9137

Chase
417-399-1904

Chance, CAI
417-298-1751

Tom Poynter
Jack Lancaster

Alan & Jean Soddy

JoAnn's Printing 660.547.2299

NOTE EARLY START

ESTATE AUCTION

Indoor • Seating Available • Climate Controlled

Saturday, Sept. 4 - 9 a.m.

Auction Location: Houston Chamber of Commerce building, Texas County Fairgrounds, 1585 N. Hwy. 63, Houston, Mo. **Directions:** From Houston at Hwy. 63 & Hwy. 17 stop-light, go north on Hwy. 63 one mile to auction location.

Watch for Bruce Scheets auction signs. Visit www.brucescheetsauctions.com to view photos. Payment System: Cash • Checks accepted with proper identification. MasterCard, Visa, Discover (3% fee applies)

Note: Vehicles and Honda four wheeler will sell at noon.

Owners: Jack & the late Vi CAULDWELL & Guests Terry & Tabbi McCALLISTER

Unchecked - Silver Coins & Paper Currency and Pennies

Two Sets 1883-o, 1884-o, 1885-o Uncirculated Silver Dollars • 30 1920s silver dollars • Paper currency: Large one dollar silver certificate, 1923 3"x7.5" • Confederate States of America 100 dollar bill ? • American nickels of the 20th century pack (one buffalo, two Jefferson, one V nickel) • World War II war years penny collection (9) • World War II war years silver nickel collection (11) • American Frontier buffalo & V nickel packs • 40 unchecked Washington silver quarters, pre '64 • 220 Liberty silver dimes unchecked • 2 one-ounce silver bars .999 fine silver • Nine silver buffalo nickels • 34 Liberty standing silver halves • Bags of wheat pennies • Other

2002 Cadillac Seville STS



**Touring Sedan,
Fully loaded,
69,500 miles**

Furniture & Household

- 3 Flat-screen TVs including: Sharp 46" Flat screen TV • TV stand • Dual reclining love seat w/USB ports • Oak coffee table • 2 Oak side tables • Area rugs • Lamps • Oak bedroom set: dresser w/mirror, headboard w/rails, armoire • Matching sofa & love-seat • Recliners • Amana washer/dryer • Costume jewelry • Towels • Shelves x5 • Wooden TV trays • Shower chair • Figuerines • Glassware • Phones • Round claw-foot kitchen table • Round oak table • 3 Small side tables • Matching lamps • Upholstered bench • Upholstered chair • Crafting table • 3 Dressers • Futon • Queen poster bed • Insta Pot • Crock pot • Roasters • Canning jars • Small dinette table • Coffee bar table • Desk • Dresser • Painted chest • Assorted mirrors • Armoire • Other

Antiques and Collectibles

- McCoy nesting bowls • Vintage tea sets • Anchor brand hand-crank clothes wringer • Antique oak ice box • Wood dough bowl • Carnival glass • Cast iron ware • Aluminum pitcher/4 cups • Distressed hutch • Oak queen sleigh bed • Antique full-size bed • Hall tree • Arcade wall mount coffee grinder • Antique treadle sewing machine • Victor VV-50 crank record player • Metal baby bed • Wooden baby bed • Feed store platform scales • Unique coal buckets • Wooden ladder • Wood block & tackles • Lot of other

**2000 Chevy S-10,
4x4, Auto. trans.,
151,000 miles**



Sporting Goods & Animal Mounts

Mule deer mount • Antelope mount • Whitetail deer mount • 2 Youth compound bows • Hoyt ZR-200 compound bow w/case • Sleeping bags • Camping gear • Cots • Knives: Remington, Old Timer, John Deere • Sears binoculars • Daisy pellet gun • Other

Bear Skin Rug w/Claws

Tools & Miscellaneous

DeWalt miter saw • Ryobi 10" table saw • Stihl MS291 chain saw • Honda GCV 160 pressure washer • Skilsaw 7.25" worm driven saw • 2 Pairs folding saw horses • Stihl battery operated leaf blower • Stihl battery operated weed eater • Toro electric leaf blower • Electric leaf blower • Electric hedge trimmer • Craftsman gas powered leaf blower • Homelite chain saw • Milwaukee battery operated caulking gun • DeWalt cordless drill • Wagner power steamer • Sears 1/2 hp bench grinder • 2 ea. 9-piece air impact socket sets • Halogen lights • Dremel set • Rigid 4-gallon shop vac • Axe • Steel T post driver • Shovels/rakes • Log chains • Wrenches • 2 sets Forstner bits • Electric staple gun • Sawzall • 3/4" Conduit • Conduit bender • 6' Ladder • 3M Noise cancellation AM/FM headphones • Misc. lumber, treated/untreated • 2 Metal dog crates • 4-Wheeler ramps • Air tank • Craftsman air framing nailer • Craftsman battery drill set • Floor jack • Bench drill press • Extension cords • Other

Lawn & Garden Items

Concrete bird bath • Gas BBQ grill • Cooler • White rocking chairs • Patio set • Old metal lawn chairs • Swing • Bird bath/water fountain • Shepherds hooks • Greenhouse planters/containers • Swimming pool & pump/filter • Porch table/chair • Wood bench • Hollow log • Other

New Harbor Freight 10 X 12 Greenhouse Kit NIB

**2000 Honda Four
TRAX 300 w/Title,
4WD, (driven by senior
citizen, well taken care of)**



**John Deere GT235
Riding Mower**



Auctioneer's Note: Quality merchandise with many unique and unusual pieces. We look forward to seeing you on auction day! Bruce

DRIVER'S LICENSE OR PICTURE I.D. REQUIRED • TERMS: CASH OR APPROVED CHECK   **OR** 

BRUCE SCHEETS AUCTIONS

www.brucescheetsauctions.com • HOUSTON, MO • We Accept Mastercard, Visa & Discover

Auctioneers:

COL. BRUCE SCHEETS

Cell: 417-260-2118

Col. Travis Tooley: 417-293-6909

Col. Josh Wheeler: 417-349-0265



All announcements made day of sale take precedence over any printed matter. Not responsible for lost or stolen merchandise. Not responsible for accidents.

**• LUNCH WAGON • APPRAISAL SERVICE
• RAIN OR SHINE**

Cashiers / Clerks:

Andi Scheets

Shelly Mutzebaugh, Suzanne Smith,
Shelly Cauldwell

Ringmen: Terry McCallister
and Vance Farmer

Land Auction

87^{+/-} Acres

ONLINE BIDDING ONLY
1911 & 2103 SHARP RD.
MONTREAL, MO.
 (HEART OF THE OZARKS)

BIDDING ENDS: (SOFT CLOSE)
THURS. SEPT. 16 @ 7:00 P.M.
OPEN HOUSE: SUN. SEPT.
5 & 12 1:00-3:00 P.M.

OFFERED IN (3) TRACTS

Sect. 02 Twp. 37N Range 15W
 Camden County, Mo.

TAXES: \$2,843.41

PIN:20-1.0-02.0-000.0-000-001.000

*Camdenton R-3 School District

***Co-Broker participation welcome,
 please contact Cory**



TRACT 1: 40 +/- ACRES (west part of farm) •Pasture
 •Timber •Home, built in 1940, 3BR, 2 bath, 1 story, 1,652
 sq ft •Pole Barn, 30'x60' *Sharp Rd. comes through
 southwest corner of this tract

TRACT 2: 22 +/- ACRES (northeast part of farm)
 •Pasture •Timber •Home, 1996 manufactured home, 3BR,
 2 bath, 1,568 sq ft •Shed, 18'x18'

TRACT 3: 25 +/- ACRES (southeast part of farm)
 •Pasture •Timber •Pond *This tract consists of 1,000 head
 sow operation *(4) Hog Barns* •(2) Farrowing Buildings,
 each are 42'x152' w/ farrowing crates, stainless feeders,
 water, auto curtains, LB White hanging heaters, multi
 stage ventilation control •(2) Gestation Buildings, each are
 33'x266' w/ pens, feed hoppers, water, fans, auto curtains
 •(6) AP Bulk Feed Tanks, 10 Ton •Compost Shed, 20'x40'
 w/ (3) concrete bays

ALSO SELLING Massey Ferguson 2660 MFWD Tractor,
 Howse Chopper Mower, Irrigation Pipe, Hose Reel, Screen
 Printing Equipment

Cory Craig

AUCTIONEER
217/971-4440

www.corycraig.com Register to bid, view catalogue & terms @ **corycraig.hibid.com**

PUBLIC AUCTION

PLEASANT HOPE, MO

AUCTION

Due to the death of the late Bobby Simmons we will sell the following Real Estate, Travel Trailer, Tractors, Guns, Tools, Household Collectibles and Misc. At the Home located just North of Pleasant Hope, Mo. From the intersection of H & KK go North ½ mile to E.R. 530 go East ½ mile to the Auction on

(Labor Day) Monday, Sept. 6, 2021 at 8:00 am

WATCH FOR AUCTION COMPANY SIGNS • LUNCH SERVED

FOR MORE PICTURES GO TO: WWW.BRUCEANDLEANAUCTION.COM



Selling 5 acres M/L with a 2 Bedroom, 1 Bath Home, Of approx. 1300 Sq. Ft. Home has Living Room, Kitchen/Dining Room Combination, Walk-in Closet, Utility Room, Ceiling Fans Throughout, Covered Back & Front Porches, 1 Car attached Garage, Full Metal Roof, Heat & Central Air, Laminate Flooring throughout, Double Pain Windows, Well & Septic System. Real Estate has two storage sheds, 12'X20' Metal Carport, Real Estate is approx. 75% open with scattered trees. Real Estate sells at 12: Noon with owner confirmation, Followed by Carports & Buildings. Terms: 10 % down day of sale, balance upon closing. For more info contact Auction Co

REAL ESTATE

TRACTORS-TRAILERS

- 2017 Starcraft 28' Solstice Super Lite Fifth Wheel Travel Trailer W/3 Slideouts, Like New Condition Used 3 Times (Been kept under cover)
- 2012 Load Runner 16' Tandem Axle Bumper Box Trailer, 102" Wide, 7000 lb. Axles
- 2008 Kodiak 16' Tandem Axle Flatbed Bumper Trailer W/Ramps
- 9' X 5 ½' Single Axle Bumper Trailer W/Drop End Gate
- Double Axle Older Boat Trailer W/Title
- Kubota L3400 4WD Tractor W/LA 463 Front End Loader one owner 251 hrs. Shedded in like new condition
- Ford 2000 Gas Tractor 3 point hitch
- 1845C Case Skid Steer 3900 Hrs. 6' Bucket, like new Tires
- 5' Kodiak 3pt. Brush Hog • 8' 3pt. Tandem Disk
- 5' 3pt Box Blade W/Teeth • 3 pt. Post Hole Digger
- Five Star Bolt on Pallet Forks • 2-New 16'-6 Bar Gates
- 2-10 Gates • Several Steel Posts

TV-MOWERS-CARPORTS

- 2008 Kawasaki 610 Mule 4X4, W/Top, one owner 445 Hrs. (good condition)
- Kubota Z421 Kommander Pro 60" Zero Turn FS730V Mower, 130 Hrs
- Areins Zoom 54XL 24 hp 54" Cut Zero Turn Mower 544 Hrs.
- 2 Older Non-Running Rider Mowers
- 12' X 24' Portable Building W/Rollup Door & Walk Door
- 18' Wide, 40' Long, 12' Sidewall Metal Carport
- 12' X 20' Metal Carport
- 16' X 30' Metal Carport W/Metal Enclosed Sides
- 8' X 20' Metal Storage Container

HOUSEHOLD-COLLECTIBLES

- LG Stainless Side by Side Refrigerator/Freezer W/Ice & Water in Door (10 months old)
- Whirlpool 30" White Electric Range
- GE Sm. Chest Freezer • 55" Vizio Flat Screen TV
- Whirlpool Automatic Washer & Dryer
- Dakota Pine King Size Poster Bed W/Mattress (one year old) • Brown Oversized Recliner
- 4 pc. Queen Size Bedroom set (no mattress)
- 2 pc. Chest/Dresser set • Kitchen Table W/4 Chairs
- 2 pc. Pleather Love Seat & Chair
- Curved Glass China Cabinet • 2- Grandfather Clocks
- Ant. Jydsk Ring IKKE Wall Crank Phone
- Ant. Sessions Mantle Clock • 6' Glass Fronted Hutch

HOUSEHOLD-COLLECTIBLES

- Writing Desk • Ant. Counter Top Groc. Scales
- Ant. Tonka & Metal Toy Trucks • Earnhardt Collectibles
- Milk Cans • New 110 Air Conditioner
- 2 Propane Wall Heaters • Learners Guitar W/Case
- Mardan Mandolin 722 W/Case
- Yamaha F-G 335 Guitar W/Case • Hondo Guitar W/Case
- Coors Light Neon Light • Lot of Pots, Pans and Dishes

GUNS-SPORTING

- Smith & Wesson 357 Mag. Revolver • Taurus 357 Mag. Revolver
- Taurus PT 911 45acp Semi-Auto Pistol
- Ruger 44 mag New Model Super Blk. Hawk Revolver 6 ½" barrel
- IJ-70 Makarov 9mm Semi-Auto Pistol
- Jimenez Arms J.A.T-380 Semi-Auto Pistol
- Lorcin Model L 9mm Semi-Auto Pistol
- High Point Fire Arms 45acp Semi-Auto Pistol
- Ruger Single 6 Revolver 22 Cal.
- Ruger 22 Cal. Semi-Auto Pistol
- Beretta U-22 Neos 22 Cal. Semi-Auto Pistol W/Laser Sight
- Thunder BERSA 22 cal. Semi-Auto Pistol
- Raven Arms MP- 25 Cal Semi-Auto Pistol
- Mossberg Model 183-T Bolt Action 410 Shotgun
- Stevens Model 311 Double Barrel 16 Ga Shotgun
- J.C. Higgins Model 583.2 Bolt Action 16 Ga Shotgun
- Marlin 12 Ga 3" Mag. Bolt Action Shotgun 35" Barrel
- Mossberg 3" 12 Ga Pump Shotgun
- Sears Model 200 Pump 12 Ga Shotgun
- Itacha Model 37 Pump 12 Ga Shotgun W/Poly Choke
- Winchester Model 1300 Pump 12 Ga 3" Shotgun W/Rib
- Henry Repeating Arms Lever Action 22 Cal. Rifle
- Marlin Model 783 Bolt Action 22 Cal. Rifle
- Mossberg 22 Cal. Semi-Auto Rifle
- Ithaca Model H-49 Lever Action 22 Cal. SS Rifle
- Winchester Model 94 Lever Action 30-30 Rifle S.N.4136144
- Marlin Model 30-AS Lever Action 30-30 Rifle W/Scope
- Marlin Model 336-W Lever Action 30-30 Rifle W/Scope
- Remington Model 760 Game Master Pump 270 Rifle W/Scope
- Ithaca Bolt Action 30-06 Rifle W/Scope
- High Point Fire Arms Model 4595 Semi-Auto 45 Cal apc Poly Stock Rifle W/Laser Sight
- Puma Model 92 Lever Action 44-40 win Rifle W/Oct. Barrel
- Savage Model 99 Lever Action 300 Cal. Rifle
- Springfield Hawkin 50 Cal. Black Powder Rifle

GUNS-SPORTING

- Lrg. Lot of Misc. Ammo • Metal Gun Box
- Sentry Combination 14 Gun Safe
- 2 Sm. Combination Safes
- Several Holsters & Belts • Pony Saddle
- Sev. Commemorative Knives
- Misc. Fishing Poles • Tackle Boxes
- 4 Ant. Sm. Boat Motors (Evenrude, Neptune)
- Dakota 17" Riding Saddle (like new)

TOOLS & MISC.

- Lincoln 225 amp Welder • Dual Mig 110v Welder
- Matco 110v Wire Arch Welder
- Chicago 110v Flux Welder
- Acetylene Torch Outfit like new W/Large Bottles
- 7 Drawer Snap-on Roll around Tool Box
- 8 Drawer Craftsman Tool Box
- Vulcan 20 Drawer Tool Box Top & Bottom W/Side Box
- Central Pneumatic 212cc Gas Powered Air Compressor
- Trades Pro 3hp 30 Gallon Air Compressor
- Performax Upright 2 ½ hp Air Compressor
- Predator 8000 Watt Generator W/4 hours like new
- 5000 Watt Coleman Generator • Parts Washer
- 1000 Watt Generator • 36" Floor Shop Fan
- Schumacher & Other Battery Chargers
- Several Hand Power Tools (several like new)
- 3 Bench Drill Presses • ¾" Dial Torque Wrench
- New 1" Drive Socket Set • Bench Vise & Grinder
- ¾" Socket Set (part snap-on)
- Several Craftsman, Snap-on and other brands of Wrench's & Sockets
- Stihl MS 180 Chain Saw • Sand Blaster Tank
- Chop Saw • Chicago 10" Bench Top Table Saw
- Chicago 12" Compound Miter Saw W/Folding Stand
- Floor Jacks • 25 Gal. 12V Fimco Sprayer
- Power Stroke Pressure Washer
- Lot of Ext. Cords • Red Arrow Bearing Press
- Delta P/U Tool Box • Cement Mixer
- 7" Gas Powered Hand Post Hole Auger
- Ex. & Step Ladders • Log Chains
- Security Camera's • 2 Sm. Solar Panels
- Fencing Tools • Yard Swing • 6 Pc. Patio Set
- Good Pallets & 30 Plus 2x4x12'
- Weed Burner • Gas Cans
- Very Lrg. Lot of Misc. Hand Tools (A LOT OF THESE TOOLS ARE IN LIKE NEW CONDITION)
- 2 P/U Bed Covers • Large Lot of Misc.

ESTATE OF "LONEZ" & THE LATE BOBBY SIMMONS

TERMS: Everything sells as is, where is. Nothing is to be removed until settled for. Payment of Cash, Check with Proper ID, or Credit Cards. Auction Company or the Owners will not be responsible for loss of items or accidents. Statements made the Day of the Auction take Precedence over Printed Matter.

SALE CONDUCTED BY **BRUCE & Le'AN AUCTION & APPRAISAL, LLC**
THE AUCTION COMPANY THAT APPRECIATES YOUR BUSINESS

For more information and pictures go to our website at www.bruceandleanauction.com

RONNIE BRUCE - Fair Play, MO
417-777-1685 or 417-654-2214
colonbruce@gmail.com

BRANDON BRUCE
Fair Play, MO

BILLY BRUCE - Stockton, MO
417-399-4800
colbbruce@gmail.com

TURNER AUCTION SERVICES 5TH ANNUAL CONSIGNMENT AUCTION



September 11, 2021 @ 10 am



Valley Lions Club Belgrade, MO • Now Accepting Consignments

Accepting tractors, vehicles, trailers, farm machinery, implements, forestry equipment, lawn and garden equipment, firearms, ammo, new and used tools, and livestock equip.

REASONABLE COMMISSION • 10% FIRST \$500 • 7% NEXT \$9500 • 2% AMOUNT ABOVE \$10,000

NO FEE FOR NO-SALES • REASONABLE HAULING AVAILABLE

TO CONSIGN CALL ANDREW AT 573-760-3755 • CONSIGNMENTS ACCEPTED UNTIL 8PM FRIDAY 9-10-21

AUCTION CONSIGNMENTS FALL 2021

TRACTORS

John Deere 2755 with 520 loader (1500 hours) • Kubota BX2200 (500hours, 60" belly mower, 4wd, hydrostatic) • Ford 1520 • Massey Ferguson 135 (gas)

VEHICLES/TRAILERS/HAYBED

2004 Ford F-250 with Deweze haybed (Cummins swapped, Deweze haybed, 4x4) • 1999 Ford F-350 Super Duty (4wd, 7.3 diesel, 6 speed, 9ft dump bed, dually)

HAY EQUIPMENT

(NEW) 2 drum disc mower • 3pt International sickle mower • New Holland 650 auto wrap round baler (4x6) • John Deere 24T square baler • 4 basket tedder • H&S 8 wheel rake • International side delivery rake

FENCE POSTS/PIPE

(400) cedar posts • Lot of 1.66" pipe • Lot of 1 3/4" pipe • Lot of 1 7/8" pipe • Lot of 2 3/8" pipe • Lot of 2 7/8" pipe

FARM EQUIPMENT

IH one cylinder motor • New Idea 212 manure spreader (pto, poly floor, single beater) • Woods 15ft batwing brush hog • 3pt John Deere 6ft brush hog • 3pt 6ft brush hog • 3pt Bush Hog 5ft brush hog • 3pt International 5ft brush hog • 3pt 5ft brush hog • Ogden 24ft manual fold cart chain harrow •

(NEW) 12ft chain harrow • Wagon running gear • John Deere 10ft pull type disc • 3pt International 6ft disc • 3pt 6ft disc • 3pt 5 shank field cultivator • 3pt John Deere 3 bottom plow • 3pt Ford 2 bottom plow • 3pt 2 bottom plow • 3pt 2 bottom plow • 3pt 300 gallon sprayer (30ft booms) • 3pt Danuser post auger • 3pt 6ft blade • 3pt blade • Pallet Forks • 5x8x10 square steel water tank

LIVESTOCK EQUIPMENT

Best Built 15ft portable hay feeder wagon • (4) 14ft Feed Train steel feed troughs • Lot of stall feeders • Lot of NEW sorting sticks

LAWN AND GARDEN/SHOP/TOOLS/PARTS

Twin cylinder air compressor • Long Wood Furnace • Tire Chains for semi welder • Lot of tools • Lot of NEW door mats • Lot of NEW trailer lights • Lot of NEW gloves

GUNS/SPORTING GOODS

Winchester model 94 30-30 • Russian Mosin Nagant 91/30 7.62x54r with bayonet made in 1941 • Carl Gustafs Swedish mouser 6.5x55 made in 1902 • Stevens model 87T 22 S L LR • Stevens model 311H double barrel 20ga 3" • Stevens 350 12ga bottom eject • Lot of ammunition • Lot of handmade knives • Lot of NEW 5'3"x7'2" rugs

Visit auctionzip.com for additions ID #43766

TA TURNER AUCTION SERVICES

For more information, call Andrew Turner at 573-760-3755

Auctioneer: Col Andrew Turner

Terms & Conditions: Cash or Good Check - proper ID required -
Not Responsible for accidents or stolen articles.

All announcements made on sale day take precedence over printed material.
"No Alcohol" Lunch Provided by Vally Lions Club

BUFFALO LIVESTOCK MARKET LLC



276 Hwy 32 West
Buffalo, Missouri
August 28th, 2021
Receipts: 823 Head

REPRESENTATIVE STEERS

300-400 @ 170.00 to 216.00
400-500 @ 165.00 to 185.00
500-600 @ 157.00 to 175.00
600-700 @ 140.00 to 161.00
700-800 @ 135.00 to 152.50
800-900 @ 140.00 to 145.00

REPRESENTATIVE HEIFERS

300-400 @ 153.00 to 176.00
400-500 @ 145.00 to 167.00
500-600 @ 139.00 to 158.00
600-700 @ 136.00 to 145.00
700-800 @ 126.00 to 134.00

FEEDER BULLS

400-500 @ 150.00 to 173.00
500-600 @ 146.00 to 164.00
600-700 @ 137.00 to 147.00
700-800 @ 120.00 to 138.50
800-900 @ 85.00 to 97.00

STOCK COWS

\$800.00 to \$1,175.00

SLAUGHTER COWS

High Dressing Fleishy Cows
72.00 to 80.50

Med Fleish Med Dress
61.00 to 70.00

Thin Fleish Low Dress
50.00 to 55.00

SLAUGHTER BULLS

High Dressing Bulls 100.00 to 105.00
Med Dressing 93.00 to 100.00
Thin Low Dressing 80.00 to 89.00

**WE WILL HAVE A SALE ON
SEPTEMBER 4TH, LABOR DAY**

MON-WED MARKET REPORT

Listen to KJEL 103.7FM • Lebanon or KYOO 99FM • Bolivar

VIEW OUR SALES AT CATTLEUSA.COM

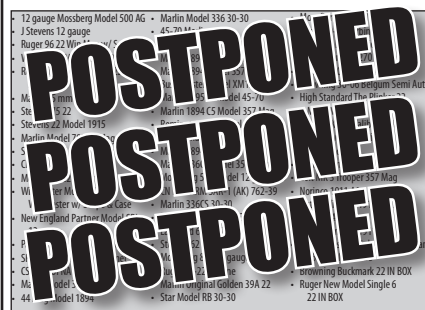
CALL FOR TRUCKING OR ON-FARM VISIT

Lyle Caselman • Owner-Manager
417-345-7876 • mobile 417-533-2944
Leon Caselman • Owner
417-345-4514 • mobile • 417-588-6185

Estate of Edward Anthony "Buddy" Tower
Guns - Ammunition - Gun Building Equipment
- Bullet Molds - Parts and more

AUCTION

Saturday, September 4, 2021 @ 10:30AM
Located at Webster County Fairgrounds
Marshfield, MO



Real Estate & Auction Services
417.859.3204 or 417.844.6020

Hoover Case - Auctioneer
MJ Johnson - sale manager
Have questions, Let us know
info@caseauction.com
auctionzip.com ID#24071
www.caseauction.com

JOHN DEERE 2955 DIESEL TRACTOR:
Cab & cold air, 85 HP, \$19,750. 573-765-4406. Richland.

JOHN DEERE 1008: 10 ft. pull type
brushcutter. \$2,950. 573-765-4406.
Richland.

**BRUSHHOG 3210 PULL TYPE HEAVY
GEAR BOX:** Brush cutter. \$6,500. 573-765-4406. Richland.

MID MISSOURI STOCKYARDS

**REGULAR SALE EVERY
THURSDAY 11AM**

WATCH OUR WEEKLY SALE IN REAL
TIME ON DVAUCTION.COM

For Farm Visits, Market Updates, or Trucking

Call Zach Cox 417-777-1320
Dan Romine 573-578-4939

**Competitive Buyers!
Competitive Commission!
Competitive Market!**

Barn: 417-532-9292

I-44 • Exit 123 "just outside of Lebanon"
17505 Route 66, Phillipsburg, MO 65722

For weekly market updates, visit us at
www.midmoststockyards.com

**MUSTANG 2040 DIESEL SKID STEER
LOADER:** \$8,500. 573-765-4406.
Richland.

**WESTERNDDORF TA 28 LOADER
WITH BALE SPIKE:** IHC monitor.
\$3,500. 573-765-4406. Richland.

**SIDE WINGS TINE DRIVE 7 FT. PULL
TYPE BRUSH CUTTER:** \$1,600. 573-765-4406. Richland.

LABOR DAY DEADLINES

*Due to the upcoming holiday,
the following deadlines will be observed:*

★★★★ Weekly Trader ★★★★★
Thursday, September 9 Edition

Display Advertising Deadline:
Thursday, Sept. 2 at Noon

Classifieds Deadline:
Thursday, Sept. 2 at 4pm

Our office
will be closed
Mon., Sept. 6

We appreciate your business. Thank you for your continued support.

**WEEKLY
TRADER
MAGAZINE**

417-532-9131 • 800-665-8875
100 E. Commercial • Lebanon, MO
www.myweeklytrader.com

ROUTE 66 DINING & LODGING GUIDE: 183 pages, \$5.00. 417-532-2045. (leave message) Lebanon.

STAY-TUFF FENCE, Johnson concrete waterers, waterlines, hydrants, posts, panels, hydraulic hoses, & GOOD FOOD. Farmers Quik Stop. 417-991-1938. Lebanon.

HORSE SALE

**First Friday
of Every Month**

Friday, Sept. 3rd

Tack @ 5pm

Horses @ 8pm

**Summersville
Livestock Auction**

245 2nd St. • Summersville, MO
417-247-8051



POOL TABLES: Installations, moves, recovers, repairs, accessories, etc. 573-646-1700.

WEATHERED BARN WOOD SIDING: 10" wide. 573-729-7226. www.pineriderustic.com Salem.

BUYING STANDING CEDAR: Minimum 6-in diameter. 417-531-0403.

LOG SIDING: 2X8 Pine/Western Cedar www.pineriderustic.com 573-729-7226. Salem.

OLD READERS DIGEST: \$1 each. 8am-8pm. 417-664-4278. Lebanon.

AG & CONSTRUCTION REPAIRS & REBUILDS

20+ Years Experience
Cast Iron & Steel Welding
Engines • Transmissions
Electrical • Hydraulics
PTO & Drivelines
Tractors & Skidloaders etc.

VALLEY SHOP • 660-458-6747
38745 Molasses Mill Rd, Latham

BUYING MOBILE HOMES: Call David at VILLA HOMES IN ROLLA 573-578-8072. Rolla.

THE HEART OF THE SPRING BOOK. A Bennett Spring Novel by Laura L. Valenti, 161 pages. \$6.50. 417-532-2045. (Leave message and phone number). Lebanon.

WANTED TO BUY DODGE DIESEL TRUCK: Or Toyota Tacoma. Also, buying antique cars. 870-324-1154. Ash Flat.

STOCK MOBILE HOMES AVAILABLE: We gottem, single and double, 3 and 4 bedroom! Call Tuffy 573-657-2176. amegamobilehomes.com

Gasconade County

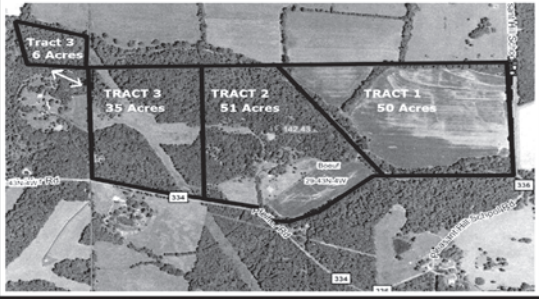
REAL ESTATE AUCTION

• WEDNESDAY, SEPT. 15, 2021 AT 10 AM •

**AUCTION LOCATION: American Legion Hall
207 Park Street, Rosebud, MO 63091**

PROPERTY LOCATION: Directions to Tract One from Rosebud, MO take Rosebud Road (2nd Street) County Road # 332 north 3 1/2 miles to Pfeiffer Road (County Road #334), take to Pleasant Hill School Road (County Road #336), turn right and go north 1 mile to Tract One on the left. Directions to Tracts Two and Three from Rosebud, MO take Rosebud Road (2nd Street) County Road # 332 north 3 1/2 miles to Pfeiffer Road (County Road #334), turn right and go 1 1/2 miles to the property on the right.

142 +/- ACRES IN THREE TRACTS IN
TOWNSHIP 43N, RANGE 4W, SECTIONS 29 & 30
IN GASCONADE COUNTY, MO



TRACT 1: Consists of approximately 50+/- Acres total with 44.20 acres tillable according to the Gasconade County FSA Office. The balance of this tract is in creek bed, wooded banks, and a wooded strip. It is terraced and currently in soybeans.

TRACT 2: Consists of 51+/- Acres and lies in the center of the farm. This tract has creek frontage along the southeast side, it is basically wooded with some open creek bottom that is currently in soybeans. The balance consists of the old homestead and some open area that was used for pasture.

TRACT 3: Consists of 41+/- acres, it has approximately 11 acres this is open and is currently in permanent pasture. The balance is in timber.

The Mahacek property represents some of the best hunting and recreational property in Gasconade County with some tillable acres to go with it. The tracts all have their own guaranteed direct access right off the county road and work great as stand-alone tracts or when combines a large tract with lots of recreational and residential possibilities!

Visit wheelerauctions.com for more information!

SELLERS: MAHACEK FAMILY TRUST

Wheeler

AUCTIONS & REAL ESTATE

23101 HWY. 24, PARIS, MO 65275 | 660-327-5890
WWW.WHEELERAUCTIONS.COM

**For more information call
Charlie Nordwald
at 636-795-4552, or
visit wheelerauctions.com.**

WANTED TO BUY ANTIQUE CARS: Convertible, Corvettes, unrestored, motors, parts considered. 870-324-1154. Ash Flat.

TRUE MODULARS: 30 to 60 day delivery available, 3 and 4 bedroom 573-657-7040 chateauhomes.net

SMALL SQUARE BALES OF STRAW: 417-932-4026. Summersville.

USED MOBILE HOMES: Call David at VILLA HOMES IN ROLLA 573-578-8072. Rolla.

BLACK ANGUS BULLS: from 12 to 18 months. 417-932-4026. Summersville.

CUSTOM SAW MILLING: 417-533-4607, 417-664-1195. Lebanon.

TINY HOMES: We gottem 573-881-3283

I BUY.....used mobile homes. Call or text 573-338-6250 or email GregS.CH@outlook.com

85 DODGE SHORT BED 360 4x4 \$1,200 417-532-5670.

AVAILABLE STOCK MOBILE

HOMES: Immediately, double wide and single, 3 and 4 bedroom 573-499-9993 columbiadiscountshomes.com

FIREARMS: Professional Repairs and Restorations. Baron's Gunsmithing. 573-363-5801, Camdenton.

IMAGES OF ROUTE 66 BOOK: 386 pages, by Gary Turner of Ash Grove. 80th Anniversary Edition. \$14.50. 417-532-2045. (Leave message and phone number). Lebanon.

2007 ADIRONDACK RV: 27 foot, 1-slide out. \$11,000. 417-887-8221. Springfield.

HEAVY DUTY CHORES REQUIRE A HEAVY DUTY TRACTOR



**0% FINANCING
FOR 60 MONTHS**

+

AT LEAST

\$2,000 OFF



JOHN DEERE

Heritage
TRACTOR

Restrictions apply, see dealer for details. Offer ends 10/29/2021.

WANTED, TIMBER TO LOG ON

SHARES: Honest, reliable, references. 417-533-4607, 417-664-1195.

ROUND & SQUARE BALES OF HAY:

417-345-5634. Phillipsburg.

TREES OF MISSOURI BOOK: \$5.

Missouri Wildlife & Nature Viewing Book, your guide to 101 spectacular wildlife and nature viewing area, \$5. 417-532-2045. (Leave message and phone number). Lebanon.

Starnes Auto LLC

22115 Rt. 66 • Lebanon, MO 65536

417.718.2707 Cell

417.588.3159 Office

www.starnesauto.com

2005 DODGE DAKOTA EXT CAB

BLUE, 85,XXX MILES\$4,800

2006 HONDA CRV SE 4WD

GRAY, 160,XXX MILES.....\$4,850

2009 PONT VIBE

BLUE, 61,XXX MILES\$4,850

2010 CHEVY TAHOE

WHITE, 152,XXX MILES\$11,500

2011 CHEVY TAHOE

WHITE, 165,XXX MILES\$11,500

2011 FORD ESCAPE XLT

GRAY, 73,XXX MILES\$6,200

2012 CHEVY IMPALA LTZ

WHITE, 125,XXX MILES\$6,450

2013 CADILLAC SRX PERFORMANCE

WHITE, 92,XXX MILES\$12,950

2013 GMC TERRAIN AWD

BLACK, 73,XXX MILES\$11,700

2014 CHEVY CAPTIVA LT

WHITE, 84,XXX MILES\$8,750

2014 CHEVY IMPALA LIMITED

GRAY, 113,XXX MILES.....\$6,200

2014 FORD FUSION

BLACK, 87,XXX MILES\$9,200

2015 GMC TERRAIN

BLACK, 113,XXX MILES\$10,950

2015 GMC TERRAIN SLT

GRAY, 53,XXX MILESCALL!

2015 GMC TERRAIN SLT

BLACK, 103,XXX MILESCALL!

2017 GMC TERRAIN

WHITE.....CALL!

2019 KIA SOUL MANUAL 5 SPEED

GREEN, 17,XXX MILES\$10,500

WE DO ALIGNMENTS!

IHC 10 FT. WHEEL DISK: \$1,800. 573-765-4406. Richland.

2 MALE BORDER DOODLES: 1 black & white, 1 blue merle, 5 months old. 573-739-9431.

HISTORY OF THE SCHOOL OF THE OZARKS: at Point Lookout. \$5.00. 417-532-2045. (leave message and phone number). Lebanon.

L4600 KUBOTA 4WD TRACTOR: 45 hp, with loader. \$23,500.00. 417-270-1505.

0% for 4 Years

HEATMOR
 Outdoor Wood
 Furnace
 as low as **\$168** per month
HEATMOR MIDWEST
 Licking, MO 65542 • 573-674-2962

REGISTERED HEREFORD & ANGUS BULLS: Home raised, Some Show-Me Select Qualified. 573-701-7828. Belgrade.

METAL ROOFS: We repair leaky metal roofs with warranty. Also, flat roofs, very affordable, cover all state. 573-338-1148. Jefferson City.

TOTE FULL OF AUNT JAMIMA STUFF: \$200 for all. 573-327-9068. Park Hills.

2 ANTIQUE CURIO CABINETS: \$100 each. Call between 8am-8pm. 417-664-4278. Lebanon.

6 BRAND NEW AREA RUGS: White with gray squares, fluffy. \$160. 8am-8pm. 417-664-4278. Lebanon.

OLD WORLD BOOK ENCYCLOPEDIAS: Full set. \$40. Kenmore sewing machine \$30. 8am-8pm. 417-664-4278. Lebanon.

KEAN CUTTER 7FT FINISH MOWER: 3-point. \$1,500. 573-765-4406. Richland.

Buildings • Hunter's Cabins • Lawn Furniture

JAMCO Portable Buildings
 800-688-2064 • 307 Enterprise Dr. • Seymour, MO • www.jamcobuilders.com
Rent To Own Plan

SELLING OUT OF THE HORSE BUSINESS: 15-20 Quarter horse bred, some registered, from weanlings to broke horses. 2 old gentle mules. 417-531-5707. Lebanon.

SENIOR CITIZENS WALKER: Bedside potty, potty seat with arms for commode. 8am-8pm. 417-664-4278. Lebanon.

METAL DETECTOR: \$125. 573-327-9068. Park Hills.

RUBBER & LEATHER BOOTS AND HIP WADERS. Men's 11, Women's 7, some insulated. \$15-\$40 obo. 636-239-2695. Washington.

REFRIGERATOR FOR SALE: Used in garage. Runs good. \$45. 417-664-4278. Lebanon.

LOTS OF DVD MOVIES: \$2 each. 573-327-9068. Park Hills.

TIRED OF WAITING MONTHS FOR CABINETS AND GRANITE COUNTERTOPS?

Get top quality
IN DAYS,
 not months!

The fastest and best answer for everything kitchen and bath is Neighborhoods!

NEIGHBORHOOD'S HOME
 IMPROVEMENT STORE
 Where QUALITY doesn't cost more!



Bring In Your Measurements For A FREE ESTIMATE!

Luxury Vinyl Planks • Tile • And Much More!

417-533-5080 | 4 MILES N. OF LEBANON ON HWY 5
 Mon.-Fri. 8am-5pm • Sat. 8am-3pm

neighborhoods-inc.com 

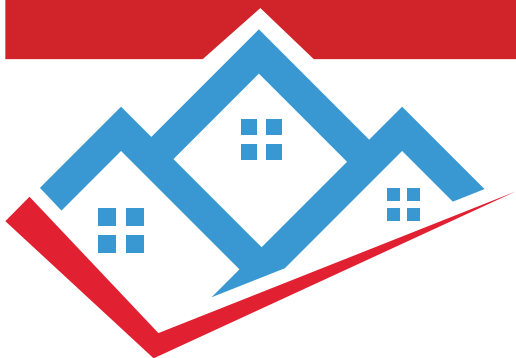
Need to sell your home?



Sell with Melton Real Estate Co.

The ONLY auction or realty company you'll ever need!

**I can sell your property at auction or list it with
MLS. Melton Auction & Realty Co is family owned
and operated for 46 years and YOU are our priority!**



We specialize in:

- Real Estate
- Farm Estate
- Furniture • Antiques
- Miscellaneous Items

**MELTON AUCTION
& REALTY CO LLC**

www.MeltonAuction.com
Roger@MeltonAuction.com

Roger Melton | Nixa, MO
417-830-0153 or 417-725-1801
Brad Cole | Nixa, MO | 417-840-2950
Tanner Foster | Galena, MO | 417-840-5519



Larry Heisel Rentals



HEISEL 573-779-1500
RENTAL SALES & SERVICE Larry's Call 636-432-9460

We Deliver!

**Crawler Loaders
Excavators, Backhoes**

Call Larry!
Rental Available in 636 or 573 Area Codes

573-779-1500



Land Pride www.landpride.com

For Outstanding Products & Service

AGRI-ENTERPRISES

Getting Chores Done

LAND PRIDE
does that

DH25 SERIES DISC HARROWS
40-100 HP 72", 96" Widths

- Cat. 1 & 2 Hitch
- 20" or 22" Notched blades
- 3" Square frame
- 7-1/2" Blade spacing
- Angle front & rear gangs up to 21 degrees
- Adjustment handle to aid in angling
- 1/2" Thick bearing hangers

1-1/2 Miles South Of Licking, MO On Hwy 63
573-674-2203 • 1-800-653-7152
www.agri-enterprises.com

STORY & PICTURES BOOK OF OLD LINN CREEK: Haha Tonka and Camden County, by T. Victor Jeffries, 72 pages. \$5.00 postpaid. (417)532-2045. (Leave message and phone number) Lebanon.

JOHN DEERE 310C DIESEL BACKHOE LOADER: Cab, 4x4 extend-a-hoe, with extra hoe buckets. \$11,500. 573-765-4406. Richland.

**ACCEPTING
NEW CLIENTS**

**WE CARE FOR YOUR
FAMILY LIKE OUR OWN.**

Reba's Family Care, LLC

417 664-0760 • Reba Green | 573-434-3764 • David Green

NEW 2021 CALICO 14' BP STOCK TRAILER: Red, escape door, interior plywood lined/sealed, rubber floor/nose mats, spare tire, brakes, 7000# GVWR. \$7,000. 417-718-5347. Conway.

BRUSH HOG 12715 15 FT. HYD. FOLD BRUSHCUTTER: Chains, solid tires, big gear boxes. \$9,850. 573-765-4406. Richland.

Team Electrical & Plumbing

"The Professionals you can count on"

Electrical • Solar Power • Plumbing • Lighting Installation

100 % Satisfaction Guaranteed	Fully Licensed & Insured	\$100 Estimates with upfront pricing
-------------------------------------	--------------------------------	--

For the best quality of work every time...

Give "Team" a call today!

417-349-6200 • www.teamelectricalplumbing.com

SNAPPER RIDING MOWER: Needs a tune-up & tire tubes. Only \$95. 573-364-7465. Rolla.

LIONEL TRAIN SET: Steam engine, tender, caboose and other car, track and transformer. \$195. 573-364-7465. Rolla.

CUB CADET LGT 1054 RIDING LAWN MOWER: \$2,000. 573-539-2538. Barnett.



Wright Spray Foam Insulators, LLC
Commercial & Residential
Call for FREE Estimates!

Ervin Gingerich 417-926-2052
B. Eli Yoder 417-746-4932

ROLL 1958 B.U. LINCOLN WHEAT PENNY'S.: Last year for these. \$60. Call pm. 573-764-3517.

ROLL 1959 B.U. MONTICELLO 1950'S COLT REVOLVER DEALERS MEMORABILIA.: All for \$100. Call pm. 573-764-3517.

PENNY'S.: First year for these. \$40. Call pm. 573-764-3517.

POWER WASHING, CALL JET STREAM POWER WASHING FOR ALL OF YOUR GRIM TO SHINE NEEDS: We wash it all, semis, stock trailers, campers, equipment, houses, buildings and driveways. If it has grime, call today to make it shine in no time! 417-270-1075. Potosi.

JOHN DEERE 4230 DIESEL TRACTOR: Cab & air, 100 hp. \$13,500. 573-765-4406. Richland.

MURRY RIDING MOWER: Good tires, deck, blades, 5-speed, needs motor. \$150-gun trade. 573-364-7465. Rolla.

WARSAW, MISSOURI OZARK ECHOES 1964 YEARBOOK, \$20. 417-532-2045. (leave message and phone number). Lebanon.

WANTED: 1966 to 1971 Jeepster Commando. 816-838-6254. Lees Summit.



Cheyenne Acres

Horse & Tack

BUY - SELL - TRADE

by Rolla, MO

Call For Directions & Availability

Call Kip
573-368-9402



SPECIALIZING IN HEAVY DUTY GATES



Cow Country Gate Sales

Call Randy: 573-569-4754
or Home: 573-539-2528
Located at: Zimmerman Welding
16889 Hwy 52, Barnett, MO

WEEKLY TRADER MAGAZINE

YOUR AD GOES HERE!

Add **YELLOW** Color
For An Additional
\$3 Per Reader Ad

All ads will include Phone Number (unless requested to be deleted by advertiser) and City Or Town, Phone Number with Area Code counts as one word. City or Town counts as one word.

RATE: 80¢ Per Word. All Classified Ads Require Payment Before Print.

(1) 80¢	(2) \$1.60	(3) \$2.40	(4) \$3.20
(5) \$4.00	(6) \$4.80	(7) \$5.60	(8) \$6.40
(9) \$7.20	(10) \$8.00	(11) \$8.80	(12) \$9.60
(13) \$10.40	(14) \$11.20	(15) \$12.00	(16) \$12.80
(17) \$13.60	(18) \$14.40	(19) \$15.20	(20) \$16.00
(21) \$16.80	(22) \$17.60	(23) \$18.40	(24) \$19.20
(25) \$20.00	(26) \$20.80	(27) \$21.60	(28) \$22.40
(29) \$23.20	(30) \$24.00	(31) \$24.80	(32) \$25.60
(33) \$26.40	(34) \$27.20	(35) \$28.00	(36) \$28.80
(37) \$29.60	(38) \$30.40	(39) \$31.20	(40) \$32.00

Place your Classified Ad TODAY!

417-532-2800 • 800-665-8875

Fax: 417-532-8140

Or Mail To: P.O. Box 192 • Lebanon, MO 65536

For your convenience we accept MasterCard, Visa, Discover or American Express



DEADLINE FOR CLASSIFIED ADS: FRIDAY 4:00PM!

Name _____

Address _____

City _____ Email _____

State _____ Zip Code _____ Phone _____

Ad Total \$ _____ X # Weeks _____ = Amount Enclosed \$ _____

MOW LIKE A PRO!



ZEE 2HP,
24hp Kaw, 54" OCDC Deck
STARTING AT
\$6,199



BLACKHAWK,
24hp Kaw, 60" OCDC Fab Deck
STARTING AT
\$7,549



EAGLE,
27hp Kaw, 60" OCDC Fab
Deck, Suspension Seat
STARTING AT
\$10,849



* OCDC (Operation Controlled Discharge Chute)
Financing available WAC 0% for 48 month, See dealer for details



WCT Farm & Lawn LLC
3299 E Evergreen Rd, Strafford, MO 65757
417-859-4311 • www.wctfarmandlawn.com