

SW LIVING



Cowboy Days rides again
page 31

BUSINESS



Saving the Mart on Valley Drive
page 33

WELL BEING



Las Cruces transforming healthcare industry
page 35

Local news and entertainment since 1969

THE LAS CRUCES Bulletin

FRIDAY, MARCH 1, 2019 | Volume 51, Number 9 | lascrucesbulletin.com



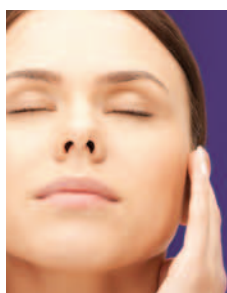
Bottom Line inside



Winter's final punch?

Snow blankets the Organ Mountains early Saturday, Feb. 23, as seen from South Main Street. Though winter officially lasts three more weeks, a warm-up is expected to keep daytime temperatures mostly in the 70s.

BULLETIN PHOTO BY STEVE MACINTYRE



BOTOX & BUBBLES

JOIN US March 5, 2019 from 6:00-8:00 PM

Come in for Pampering, Bubbles and Hors D'oeuvres. We will have special pricing on Botox and other services at this event. Gift Certificates will be available.

Memorial Plastic & Reconstructive SURGERY

2540 S. Telshor Blvd (entrance on Memorial Court) • Please RSVP, Space is Limited. 575-556-1892



Content brought to you by:

Doña Ana County 'Your Partner in Progress'



County staff, volunteers celebrate Read Across America Day

Doña Ana County employees, elected officials, professionals from area organizations and volunteers will be visiting classrooms on Wednesday, March 6 as part of Read Across America Day, a national initiative to encourage children to read and to celebrate Dr. Seuss's birthday.

This is the 21st anniversary of Read Across America Day (RAAD). For several years, more than 3,000 elementary school students in Las Cruces Public Schools, Gadsden Independent School District, Mesilla Valley Christian Schools, Mission Lutheran and Holy Cross Catholic School have participated in the daylong literacy outreach program.

Coordinated by the Doña Ana County Community and Constituent Services Office, other participating staff will represent the Doña Ana County Health and Human Services Department, Fire and Emergency Services, Public Information and Special Projects Office, Community Development Department and the Assessor's Office, among others.

External partners in the program include the City of Las Cruces Police and Fire Departments, Las Cruces City Council, New Mexico Department of Public Safety, City of Las Cruces Volunteer Network Center, La Semilla Food Center, Animal Services Center of the Mesilla Valley, New Mexico Department of Game and Fish, Friends of the Organ Mountains, Burrell Medical College, City of Sunland Park, Take it Outside NM, White Sands Missile Range, U.S. Border Patrol and the U.S. Forest Service.

Doña Ana County Animal Control and Codes Enforcement Department is sup-



plying "Cleanup with Carlos" books to the March 6 literacy effort. Children who attend will receive their very own copy of the book, which is offered in English and Spanish.

Through the Doña Ana County Illegal Dumping Partnership, "Cleanup with Carlos" discusses the dangers that littering and illegal dumping pose in Doña Ana County and the penalties associated with illegal dumping. Additionally, the storyline incorporates the importance of recycling and teaches children the three R's — reduce, reuse and recycle.

On March 6, Carlos and his friend Lizzie the Lizard, also featured in the book, will be at Doña Ana Elementary with Doña Ana County Treasurer Eric Rodriguez.

In 2018, The Stocker Foundation awarded the Community and Constituent Services Office a two-year grant of \$10,000 for the purchase of pencils and erasers for children, along with books for the libraries of the elementary schools that are involved in RAAD. The foundation grant will also cover the cost to hold an appreciation day for the readers who are involved in the effort.

Read Across America Day (RAAD) was created by the National Education Association as an annual reading motivation and awareness program that calls for every child in every community to celebrate reading through events, partnerships and reading resources.

For more information about RAAD, go to

www.nea.org. To learn more about local efforts to curb illegal dumping in Doña Ana County and "Clean Up with Carlos," visit www.cleanupwithcarlos.org.

DASO to host Hatch community meeting

Deputies with the Doña Ana Sheriff's Department will be hosting a community meeting Tuesday, March 5 at Our Lord of Mercy Church, 117 Hartman Street in Hatch. The meeting will start at 6 p.m.

Sheriff Kim Stewart will be introducing a new public outreach effort within the department, and will field questions from residents related to public safety. Major Tom Hennigh will address new community engagement events and will be open to suggestions residents may have.

Questions can also be sent via email to: input@donaanacounty.org.

Doña Ana School Road closed March 17

A portion of Doña Ana School Road between Elks Drive and El Camino Real Road will be closed Sunday, March 17 while crews work to repair a transmission power line.

The closure will begin at 8 a.m. and is expected to reopen at 5 p.m. A detour will be posted routing motorists to Mirasol Drive and Camino de Flores.

Warning signs will be prominently posted. Motorists are advised to slow down, watch for work crews, and expect delays in the area.

JOIN US ON SOCIAL MEDIA!



March 1, 2019

Visit our award-winning website at www.donaanacounty.org, or contact us at (575) 647-7200

LAS CRUCES UTILITIES

Gardeners tour demonstration garden

By **CASSIE MCCLURE AND SUZANNE MICHAELS**

For the Bulletin

Plants are still mostly slumbering across the Mesilla Valley, but there are hobby gardeners who are itching to put their hands back into the soil and grow their gardens, with a focus on plants that thrive in our region and use little water.

Here, Las Cruces Utilities (LCU) can help them get ready.

“Our demonstration garden allows visitors to get a sense of what plants they can choose for their gardens that are both water-wise and

adapted to our desert climates,” explained Rhonda Diaz, LCU water conservation program coordinator. Diaz led members of the Mesilla Valley Gardening Club recently and gave them a preview of the wildly popular LCU Spring Stroll, coming up May 22 in the garden.

Each member of the Mesilla Valley Garden Club received a copy of the Demonstration Garden Guide, a 48-page full color book that details the plants that decorate our desert home. It gives tips for the right low-water plants and the irrigation system options that will support your

garden. You can access the free guide online at www.las-cruces.org/waterconservation.

“The garden is open to the public on the west side of the LCU offices at 680 N. Motel Blvd. It’s a little dormant right now, but it’ll still give you a bit of inspiration of what is possible for your garden,” said Diaz, “And, you might even find what you have in your garden already and we can teach you how to take care of it.”

Mesilla Valley Gardeners is a part of National Garden Clubs, Inc., and the New Mexico motto “Grow New Mexico” emphasizes expanding the

knowledge of gardening and conservation.

If you’re interested in coming out to the next meeting of the Mesilla Valley Gardeners, it will be at the Mesilla Valley Bosque State Park on Tuesday, March 12 at 1:30 p.m. The New Mexico Garden Clubs, Inc., state president and ranger for the park will be speaking. For more information, please contact Linnea Marie Egbert at 575-521-0521



PHOTO BY JOSHUA ROSENBLATT

Rhonda Diaz discusses the resources that LCU has for local gardeners such as tips for water-wise plants and irrigation systems that will work for different types of gardens.

or linneamariee@gmail.com.

Las Cruces Utilities provides gas, water, wastewater and solid waste

services to approximately 100,000 Las Cruces residents and businesses. Reach them at 575-528-3500 from 8 a.m.-5 p.m. Monday-Friday.



Children's Reading Alliance
575-522-3713
childrensreadingalliance.org
3880 Foothills Rd, Suite A,
Las Cruces, NM 88011

Can we talk?

Please buy a book for my little human friends!



8TH ANNUAL BUFFALO ROAST FUNDRAISER

Human Systems Research, Inc.
a nonprofit for anthropological research and preservation
Presents

Fields of Fire:

Indian and Army Tactics at the 1876 Little Bighorn Battle and the Application of Firearm Identification in Revealing the Story
by Douglas D. Scott



Over 30 years of archaeological investigation of the iconic Battle of the Little Bighorn has recorded large numbers of artifacts related to firearms, primarily bullets and cartridge cases. These seemingly mundane artifacts are of great importance in reconstruction of Indian and Army fighting methods and tactics. Application of forensic firearm identification methods and GIS-based military terrain analysis reveal that Custer's troop deployment was in accord with then-current military tactics while the Lakota and Cheyenne warriors employed a culturally based fluid war group concept that made best use of available terrain as cover. Simply stated the archaeological record demonstrates the Native Americans out numbered, out gunned, and out fought the US Seventh Cavalry on June 25, 1876.

Saturday, March 9, 2019
at the New Mexico Farm and Ranch Heritage Museum
Advance Ticket Sales Only - \$50 per person
For tickets and information call 575.524.9456

IN THE NEWS

Bataan Memorial Death March

The last day to register for the 2019 Bataan Memorial Death March is Sunday, March 3. The march itself will be Sunday, March 17, at White Sands Missile Range, about 26 miles east of Las Cruces.

The cost is \$125 for individuals for the 26.2-mile march or the 14.2-mile honorary march.

The entry fee for teams of five members is \$600. There are light and heavy categories for civilian and military individual marchers and groups.

All marchers must pre-register at bataanmarch.com/register. No walk-in registrations will be accepted. Registration packet pickup will be 2-6 p.m. Thursday, March 14, and 8 a.m.-6 p.m. Friday and Saturday, March

15-16, at the Las Cruces Convention Center, 680 E. University Ave.

"The Bataan Memorial Death March is a challenging march through the high desert terrain of the White Sands Missile Range," according to the event website. "The memorial march is conducted in honor of the heroic service members who defended the Philippine Islands during World War II, sacrificing their freedom, health, and, in many cases, their very lives."

An estimated 6,000-7,000 marchers will participate in the 2019 event.

Sponsors and volunteers for the event are also welcome.

For information, call

575-678-4654.

Regents meeting

The Board of Regents of New Mexico State University will hold a regular meeting at 9 a.m. Friday, March 8, in the Regents Room of the Educational Services Building, Las Cruces Campus, 1780 East University Ave.

In compliance with the Open Meetings Act, copies of the agenda will be made available at NMSU's Zuhl Library on the Las Cruces campus at least 72 hours prior to the meeting and will be accessible on the public university website at regents.nmsu.edu/agenda. Contact the Office of the Board of Regents at 575-

646-5997 for additional information.

The meeting will be available by webcast through the link at panopto.nmsu.edu/bor. If you are an individual with a disability who is in need of a reader, amplifier, qualified sign language interpreter, or any other form of auxiliary aid or service to attend or participate in the hearing or meeting, please contact the Board of Regents Office at 575-646-5997 at least three days prior to the meeting, or as soon as possible. Public documents, including the agenda and minutes, may also be provided in various accessible formats.

students the opportunity to nominate local teachers for cash prizes for the winning teacher and his or her school.

High school students can nominate K-12 teachers through Thursday, March 14, by writing essays, poems or thank-you letters detailing how much their teachers have impacted their lives and why they appreciate them. The maximum length is 500 words.

Entries will be collected online only at www.bn.com/myfavorite-teacher and will be judged "on the compelling nature of the teacher's inspiring qualities, the sincerity of the student's appreciation and the quality of expression and writing," according to a Barnes & Noble news release.

Only high school students 14 or older at the time of entry and active teachers employed by elementary, middle or high schools in the United States are eligible to win.

The winning teacher will receive \$5,000, and his or her school will receive an additional \$5,000. The award recipient will also be recognized at a special community celebration at their local Barnes & Noble store. The student who writes the national winning entry will win a \$100 Barnes & Noble gift card.

Pecan conference

The Western Pecan Growers Association (WPGA), which includes New Mexico, California, Arizona and west Texas, will hold its 53rd annual Pecan Conference Sunday-Tuesday, March

ACADEMY FOR LEARNING IN RETIREMENT 2019 SPRING PROGRAMS

MARCH

Contemporary Issues in Russia, China, Latin America and East-South Africa

Presented by Drs. Nathan Brooks, Ken Hammond,
Inigo Garcia-Bryce and Miriam Chaiken

Break out of our narrow focus on the United States and American politics by listening to four prominent scholars from NMSU discuss contemporary issues and events in some of the most interesting countries and regions of our planet. From the rise of Putin in Russia, the new dynamism of Africa, the spread of populism in South America, and the re-emergence of China as an economic and military super power these presentations will provide a critical perspective on issues with local, regional and global implications.



Tuesday, March 5: Nathan Brooks: "Russia". We will discuss the rise of Putin and his time in office as President and Prime Minister concluding with some speculations about the future of Putin and Russia.



Thursday, March 7: Ken Hammond: "China". China today is reclaiming its place as one of the leading countries in the world. We will examine China's recent history, emphasizing the role of the Communist Party and the complexities of the US-China relationship.



Tuesday, March 12: Garcia-Bryce: "Latin America". We will examine the recent wave of populist governments from Mexico to Venezuela to Brazil in historical perspective, and discuss the implications for the region's relationship with the United States.



Thursday, March 14: Miriam Chaiken: "East-South Africa". From fast growing economies to huge improvements in health and standards of living, we will discuss changing patterns of social and economic relations in sub-Saharan Africa with a focus on new opportunities for women.

ACADEMY FOR LEARNING IN RETIREMENT

GOOD SAMARITAN AUDITORIUM • 3011 Buena Vida, Las Cruces, NM

10 AM-10:30 AM Cookies and Coffee • Presentations begin at 10:30 AM-12:00 Noon

\$4 per day, members • \$5 per day, non-members • \$5 per year to become a member



For more information
575.522.1938

nmsu.alr@gmail.com
dacc.nmsu.edu/alr

Organic Herbal Teas 2/\$6.00



1300 El Paseo Rd, Las Cruces
575.523.0436 M-Sat 8-8 Sun 9-6

Traditional Medicinals Organic Herbal Teas 16-count 2/\$6 Prices good through 3/12/19

Shop Local



Favorite Teacher Contest

Barnes & Noble's 2019 My Favorite Teacher Contest is underway in Las Cruces and across the nation, giving high school

45TH ANNUAL DOLL SALES EVENT! SUN COUNTRY DOLL FOLKS



Dolls: Antiques, Collectible, Miniature, Modern. Clothes, Books & more. Bring your sick doll to the Dolly Doctor.

For information email jandoll246@gmail.com
\$1 OFF ADMISSION WITH THIS AD

**SATURDAY
MARCH 9, 2019
9AM - 3PM**
**Admission:
Adult \$3 Children \$1
12 and under**

**Best Western Plus Hotel
6655 Gateway Blvd. West, El Paso, TX**

NEWS

CONTINUED FROM 4

3-5 at Hotel Encanto, 705 S. Telshor Blvd.

The two-and-a-half-day conference will bring together about 400 pecan growers, scientists, ag professionals and others working in the industry, said John White, who retired in 2008 from the Doña Ana County Cooperative Extension Service.

"The pecan industry has grown quite a bit" since the first WPGA conference in 1966, White said.

The conference will include presentations by officials from both the National Pecan Federation and the U.S. Pecan Growers Council. There will also be a meeting on genetics hosted by New Mexico State University that will focus on producing higher quality pecans.

Major topics will be an

update on the control and eradication of the pecan weevil and pecan aphids, increased salinity in the water table, the weather and the first full year of the federal marketing order for the pecan industry, along with the effect of walnut competition on the pecan market and the impact of large pecan crops from Mexico and South Africa competing with U.S. pecans.

The conference's trade and equipment show will provide an opportunity to visit industry booths. Vendors will be selling equipment, fertilizers, nutrients and other pecan-related supplies.

Online registration for the conference has closed, but attendees can register at Hotel Encanto.

For more information, contact White at 575-640-7555 or director@westernpecan.org. Visit www.westernpecan.org.

BRIDGE LESSONS

Come Play With Us!

Winter in Las Cruces!

This is an on-going series for new players and players who have been away from the game. Tuesday 10:00-11:45. Absolutely no experience required. It's FREE. Questions?

Call John Randall at 786-338-5970.

Play Bridge! Meet new people! Have Fun!
The Belton Bridge Center is located at
1214 E Madrid Ave.



American Contract
Bridge League

www.acbl.org

Casey Carpet

OF LAS CRUCES, INC.

SERVING SOUTHERN NEW MEXICO FOR OVER 30 YEARS

SPRING SWEEP AWAY SALE

Reduce dust and allergens with these fabulous floors!



Find us on Facebook at Casey Carpet of Las Cruces

FINANCING AVAILABLE**

1515 W. AMADOR
523-9595

MON. - FRI. 8 A.M. - 6 P.M. • SAT. 9 A.M. - 5 P.M.
WWW.CASEYCARPETOFLASCRCES.COM



FlooringAMERICA



"Our mission is to provide our customers with the best selection, the best prices, and best service available in the industry. Call us today for a free in-home estimate."

Hank Schweinebraten
President
Casey Carpet of Las Cruces, Inc.

*Materials only. Cushion, freight, delivery, and installation available at additional charge. No contract/commercial. Prior orders exempt. While supplies last. All sales final. No returns. Offer valid through 3/10/19. **Financing provided by Synchrony Bank. See store for details. Subject to credit approval.

THE LAS CRUCES
Bulletin

1740-A Calle de Mercado,
Las Cruces NM 88005

PHONE: (575) 524-8061
FAX: (575) 526-4621

www.lascrucesbulletin.com
editor@lascrucesbulletin.com

PUBLISHER

Richard Coltharp

DISTRIBUTION

Teresa Tolonen

ADVERTISING

Claire Frohs
Pam Rossi
Elaine Sasnow

CLASSIFIEDS/OBITS

Marcus Loyola

LEGALS/PUBLIC NOTICES

Angel McKellar

NEWS

Marty Racine, Managing Editor
Elva Österreich, Special Projects
Alexia Severson, Special Sections

REPORTERS/Writers

Mike Cook
Avra Elliott
Michael Scanlon

GRAPHIC DESIGNERS

Stacey Neal

PHOTOGRAPHERS

Steve MacIntyre

Submit letters to editor@lascrucesbulletin.com or by fax at 575-526-4621. Letters should not exceed 200 words, may be edited for length or content and must include the writer's name, address and phone number for verification. Anonymous letters will not be published.

DISTRIBUTION: The Las Cruces Bulletin is complimentary at advertised locations in Las Cruces, limited to one copy per reader; \$1 per copy elsewhere.

SUBSCRIPTIONS: \$58 per year in Las Cruces or \$125 per year through the U.S. Postal Service.

COPYRIGHT: The entire contents of the Las Cruces Bulletin are copyright 2019 by the Las Cruces Bulletin.

Spaceport closer to viability than ever

We all know New Mexico is one of the poorest states, and we have plenty of things that need work. Yet we choose to live here, at least in part, due to the many things that make our state unique and, yes, enchanted.

Tourism is one of our biggest industries because others around the world have discovered that unique enchantment.

Other industries have also taken advantage of New Mexico's unique qualities.

The oil-and-gas industry thrives on the minerals beneath our surface in the massive Permian Basin in the southeast corner of our state, and the gas in the northwest corner.

The U.S. Air Force has long enjoyed our good weather and relatively low population for important training at Holloman Air Force Base, Cannon AFB and Kirtland AFB.

Scientists going back to the days of the atomic bomb and the V-2 rocket have made use of our state's relative isolation.

Here are some other things southern New Mexico has that most other states do not:

- Sunshine and clear skies 350 days out of the year.
 - Altitude nearly a mile high
 - The largest amount of protected air space in America (White Sands Missile Range)
 - Along Interstate 25/10, four great universities with a long history in engineering and technology. New Mexico State University, New Mexico Tech and, begrudgingly, University of New Mexico and University of Texas-El Paso.
- And while those are rare on their own, the combination of all those things is unique in America, making southern New Mexico the perfect place in America for a spaceport.

If you read the Bulletin with any



RICHARD COLTHARP

From the Publisher

regularity, you've seen the columns in our business section by NMSU's head of economics, Chris Erickson. Chris has been writing for the Bulletin longer than I have, and I almost always appreciate his insight and perspective. Almost always.

Last week was a rare exception, as he argued the state should stop its funding of

Spaceport America. So, my friend and fellow Rotarian, here's how I beg to differ.

I have been a proponent of New Mexico's spaceport since the last century, when I was editor of the Alamogordo Daily News and first met aerospace evangelist Len Sugerman, around 1998. Sugerman was a retired Air Force Colonel who worked at NMSU's Physical Science Laboratory for many years.

For me and hundreds of others, Sugerman was the first person we'd ever heard discuss the concept of a spaceport. "In New Mexico, the first mile is free!" That was one of Sugerman's taglines, meaning that our altitude is a mile closer to space, requiring less fuel and less money to escape gravity. Sugerman passed away in 2006, preaching the gospel of space until the end.

The state has invested a ton of money into the project, but nothing we've done as a state has as solid a future while at the same time taking as much advantage of what we have. It is also true the state has shot itself in the foot multiple times on this project. The legislature has had to go back and correct at least a couple of operational processes to make using the spaceport viable. Some of these were oversights (after all, no one had ever built a spaceport before). Some were errors in judgment. Regardless, they set the spaceport back, and allowed other states to catch up with us.

Multiple spaceports may not be a

Bovine physiology 101

ATTN: This is addressed to teenagers, tuba players and grown-ups in the news media who have gotten great giggles out of the story that cow flatulence is a danger to man-

kind! It can be expected from those that have the attention span of a Bartlett pear, but tuba players should know better.

Cows do not flatulate.

Allow me to give you a lesson in bovine physiology. Cows are herbivores, vegetarians. They live on grass. Cows are big. Thousand-pound cows eat a lot of grass. They have four stomachs, the biggest is the rumen. The rumen's job is to prepare grass and roughage to make it digestible by the other stomachs and the alimentary track. This is done by bacterial digestion and fermentation, and physical maceration.

Now, cows lead a fairly boring life. They graze and chew their cud. The cud is a baseball-size wad of chewed, swallowed, re-chewed, regurgitated, chewed and swallowed grass, ad infinitum. This cud is part of a magnificent digestive mechanism that allows cows and other ruminants to utilize fibrous vegetative material that is otherwise completely indigestible by simple-stomached animals like ... people.



BAXTER BLACK
On the Edge
of Common Sense

For instance, cows can derive nutritional benefit from lettuce! Who'd a thunk it!

People eat lettuce because it is the next best thing to eating nothing. If you

wanna lose weight, the best way is to eat ... (?). No, not lettuce, Nothing! But nobody wants to eat nothing, so they eat lettuce, which is the next best thing.

This whole issue involves greenhouse gasses emitted into the atmosphere. There are three; carbon dioxide (CO2), methane and nitrous oxide.

METHANE comes from fermentation of organic breakdowns; compost in your flower garden, garbage dumps, rice paddies, wetlands, domestic and wild ruminants, and alcoholic beverages ... agriculture produces 5.8 percent of all greenhouse gasses.

CARBON DIOXIDE comes from fossil fuels like coal, oil and natural gas, their energy production, transportation and use. CO2 accounts for 86.3 percent of all greenhouse gasses. Transportation (cars and trucks) amounts to 33 percent of all fossil fuels used.

What do we do with all this information? Eliminate non-essential herbivores? Starting with elephants, buffalo,

Connecting the dots between child safety, student success and thriving local economies

I was elected to serve all the people of Las Cruces – young and old. In order to get to one universally agreed-upon goal: that all New Mexican children should be safe, healthy and provided with an effective education we must acknowledge that our work will only be possible if different sectors collaborate. This includes the public sector and private sector.

Ending our epidemic of childhood trauma cannot be done by government alone, as this heavy lifting requires the thinking of business people, innovators and entrepreneurs.

As a long-term advocate for families, I understand this means I must reach out to school boards to



KASANDRA GANDARA

Guest Columnist

understand their vision and goals for every student. I must spend energy reaching out to child welfare to ensure that our system of child safety is comprehensive.

I must fully understand how healthcare providers work to identify and treat mental health challenges and substance misuse. I need to work with the Chamber of Commerce to appreciate how business people see the impact of a traumatized workforce. To create a seamless system of care for all our most vulnerable students and families, I must reach across political aisles and bridge differences.

There are five tasks I have completed over the past year with support

from a network of very caring Doña Ana residents:

I have sought to create the nation's first data-driven and cross-sector program focused on ending adverse childhood experiences, which include various forms of abuse, neglect and trauma.

I have sponsored "great conversations" that bring together residents to share their experience with trauma and how best to heal communities.

I have formed 10 task forces that meet monthly to use data, technology and collaboration to identify gaps in services and pitch new ways to address those gaps.

I have advocated that business and nonprofit leaders can create solutions to longstanding challenges by working

in alignment across disciplines, sharing data, research, strategies and evaluation.

I have reached out to and found ongoing support and guidance by the authors of Anna, Age Eight: the data-driven prevention of childhood trauma and maltreatment, who made their book free-of-charge to ensure every resident could have a copy and see a blueprint for moving forward.

To be honest, the work has been both exhilarating and exhausting. To date, our work has been mostly unfunded, relying on the compassion and courage of local residents.

To get our city and county to the next level, I am supporting the creation of the Anna, Age Eight Institute guided by the book. This Institute,

which will be a technical assistance center with substantial funding for Doña Ana County, is being sponsored by Sen. Bill Soules and Rep. Armstrong in the form of Senate Bill 370. When funded, the vision of this first-of-its-kind institute is to support every city mayor, city council member and county commissioner in creating

cross-sector and systemic work that ensures all our children have the services they and their parents need to find success with family life, school and work.

Kasandra Gandara represents District 1 on the Las Cruces City Council. She was elected in 2015 and is eligible to run for re-election this year.



TREAT YOURSELF TODAY

\$10 OFF

Purchase of \$50 or more



Limit one coupon per visit per customer.
Expires December 31, 2019
PLU 7110

LOCAL PRODUCTS – GREAT CUSTOMER SERVICE – UNIQUE FOODS – QUALITY PRODUCTS

COMPUTER CABLING AND PATCH PANELS
ADT, DSC, P1 & HONEYWELL TAKEOVERS
RESIDENTIAL PRE-WIRES - RESIDENTIAL & COMMERCIAL ALARM SYSTEMS
BEAM VAC SERVICE - SMOKE DETECTOR REPLACEMENT
CAMERA SURVEILLANCE - COMPLIMENTARY CONSULTATIONS & QUOTES



Call David Diaz for a free estimate
575-527-2151 or 640-1522
AlliedSecurityLC.com

James Neeley, Owner **10% Discount with this ad.**




ADDICTION RECOVERY CENTER

SETTING THE STANDARD FOR PSYCHIATRIC & ADDICTION SERVICES



We are available 24/7 and walk-ins are always welcome.

If you or a loved one needs help, please call
575.382.3500

We accept TRICARE®, Medicare, and most insurance plans.

TRICARE® is a registered trademark of the Department of Defense, Defense Health Agency. All rights reserved.

MESILLA VALLEY HOSPITAL

**3751 Del Rey Blvd.
Las Cruces, NM 88012**

mesillavalleyhospital.com



Workforce Development & Career Readiness

DACC Career Services
Dress for Success Fashion Show

Espina Campus

March 12, 2019


East Mesa Campus

March 13, 2019

For Information:
575-528-7009
aherwatic@dacc.nmsu.edu

Las Cruces Bulletin

Proud Sponsor of our "Pet of the Week"



Lilac
Female (Spayed)
2-years 1-month

With a cuddly exterior and the attitude to match; Lilac is the purrfect choice for any family. She is sure to keep you feline all warm and fuzzy inside for many years to come.

Animal Services Center of the Mesilla Valley
3551 Bataan Memorial West

Help sponsor an adoptable animal!
To sponsor call:
524-8061
To adopt call:
382-0018
or visit
petango.com/ascmv



LUNCH SPECIALS \$10*

MONDAY - THURSDAY • 11AM-4PM

Includes a non-alcoholic drink. Not valid with any other offer.*

FIESTA NACHOS

A 10" plate filled with our own tostada chips, topped with green chile, shredded beef, lettuce, tomato, sour cream and cheese.





Famed for Mexican Food & Steaks Since 1939

Open 7 Days a Week 11 a.m. for Lunch & Dinner
Open for Breakfast 8am-11am, Saturday & Sunday
575-524-3524
www.laposta-de-mesilla.com

Physical Therapy and Parkinson's Disease

Parkinson's disease is a progressive, degenerative clinical condition that worsens over time. Typical symptoms include tremors, loss of facial expression, stiffness, slowing down of movement and a multitude of other problems. Parkinson's disease is associated with the inability to produce dopamine in the brain. Dopamine is a chemical messenger that transmits information between brain cells. Reduction of dopamine causes symptoms such as tremors (typically described as 'pill rolling'), tightening of the muscles (called rigidity) and slowing down of movements (called hypokinesia).

Parkinson's disease affects each individual in a different way. This diagnosis is a life-altering event and caregivers or family members may react with denial, confusion, fear, anger, or self-blame. Physical therapists work closely with the patient and family members to monitor the condition and improve functional capacity as much as possible.

The physical therapist will conduct an evaluation of gait, balance, coordination, strength and posture of the patient. The caregiver is provided the tools and information to keep the patient mobile with movement patterns and home exercise programs.

Depending upon the severity and nature of the patient's condition, the treatment plan focuses on the following:

- Developing strategies to get in and out of bed and maintain balance in sitting and standing.
- Improving endurance, strength, and flexibility.
- Enhancing dexterity to perform hand movements.
- Maintaining coordination while walking and changing directions.
- Decreasing risk of falls.
- Ascending and descending stairs.



- Managing multiple tasks simultaneously.
- Participating in day-to-day activities.

In the early phase, physical therapy helps maintain activity and reduce the risk of falling. Group activities like dance classes provide a refreshing way to explore movement and music. Over a period of time, the goal is to stimulate muscle activity and preserve existing function. As the disease progresses, patients may be confined to a bed or a wheel chair. Treatment is then focused towards maintaining vital functional skills. Walking aids like a cane or walker may be prescribed.

Anxiety and despair is common when dealing with a progressive condition with no known cure. Despite the complexity of the condition, the benefits of physical therapy are significant. Helping a patient cope with disability and dysfunction from a physical and emotional perspective is the foundation of physical therapy treatment for every condition, including one as progressive as Parkinson's.

How can you help?

People with Parkinson's disease often need periodic assessment by a Physical Therapist to ensure that their functional abilities are maximized. You can help them by reminding them that even minor changes in strength, balance, and coordination can have dramatic impact on their function, and suggest that they ask their physician for referral to physical therapy at least once a year.

Caregivers and family members as well as people with Parkinson's disease often benefit from participating in a support group. The Parkinson's Disease Support Group of Southern New Mexico meets monthly in Las Cruces. Go to www.pdsgsnm.org for information.

Dennis Prickett
Physical Therapist
and co-owner of
Atrium Physical Therapy.



COLTHARP

CONTINUED FROM 6

problem, though. Many predict a future where space travel is very similar to current air travel, where many craft are flying out of and landing in many ports daily.

Sierra County manager Bruce Swingle will tell you

the spaceport is already making money and making a difference. Swingle believes the business going on currently represents less than five percent of what will be happening at full capacity. Even at that, Sierra County is making more money (through lodger's tax, restaurants and other expenditures from businesspeople and

tourists coming to Truth or Consequences) that the county is contributing from the gross receipts tax it is contributing. Doña Ana County also voted to make GRT contributions.

Spaceport America is closer than ever to vital viability, and now is not the time to back off. It's time to kick in that extra gear down the homestretch.

BAXTER

CONTINUED FROM 6

goats, horses, prairie dogs and termites. Next, they begin to regulate our diet; no sugar, no organic food (too inefficient) and

how about trees? They absorb CO2 and produce oxygen but what if we have too many trees and they won't let you cut them down? I can picture an army of bureaucrats regulating the use of gasoline, diesel, electric-

ity, construction ... wait a minute! They already do!

Back to Cow "Flatulations": the methane that cows emit comes directly from the rumen. They belch it up. Not as funny, but at least now you know.



PUBLIC NOTICE – MEMBER SOUGHT FOR UTILITY CUSTOMER ADVISORY GROUP

The City of Las Cruces is currently accepting applications to fill an opening on the ad hoc committee named the Utility Customer Advisory Group (UCAG).

MEMBERSHIP: The Mayor with the advice and consent of the City Council will appoint five (5) members to the UCAG.

• **Member Eligibility: Appointee must:**

- Be a registered voter and a customer/recipient of one or more of the Las Cruces Utilities (LCU) for at least one (1) year prior to appointment.
- Not hold any elected or appointed public office or be a City employee.

• Not be a contractor, consultant, or have a contractual relationship with the City for the benefit of the LCU.

• **Member Qualifications: To be qualified for appointment, appointees shall:**

Have a significant technical expertise in one or more of the following fields:

- Banking/Finance
- Business
- Economics
- Engineering
- Utility Rate Management, and/or
- Other skills or experience that may be of value to the rate making process.

Member Training: UCAG members will participate in training, provided by a third party consultant; along with the Board of Commissioners for the City of Las Cruces Utilities (Utilities Board) and staff covering the basics of ratemaking consistent with utility-based cost-of-service analysis as modified through the constraints of the Utilities Board's new By-Laws.

DUTIES: The UCAG will function as a customer advisory committee with members participating in:

- All four (4) utility rate reviews before the Utilities Board on behalf of the City's various customer rate classes.
- The rate review process of selecting the consultant via the City's currently established Request for Proposal ("RFP") procurement process.
- Press releases, utility billing inserts, letters to the editor/guest editorials, and similar materials concerning rate reviews pending before the Utilities Board will be approved by the UCAG prior to release or publication:
 - Press releases approved by the UCAG will be submitted to and issued by the City's Public Information Office following standard procedures.
 - Utility billing inserts approved by the UCAG will be submitted to the assigned City staff at the Utilities Department and may be reformatted for consistency. The printing costs for billing inserts will be paid for by the Utilities Department.
- The UCAG will terminate upon completion of the duties set forth above upon notification by the Utilities Director to the City Clerk.

Applications can be picked up at the City Clerk's office inside City Hall at 700 N. Main St., or accessed online at: <http://www.las-cruces.org/departments/city-clerks-office/boards-committees-and-commissions>. For more information, contact the City Clerk's Office at (575) 541-2115. The TTY number is (575) 541-2182.

www.las-cruces.org



MARCH EVENTS

MARCH 1

Downtown Art Ramble

Main Street Downtown. 5-8pm. Free. downtownlascruces.org

Music Beyond Borders

NMSU Atkinson Music Recital Hall. 6pm. Free. 915-747-3227

MARCH 1-3

9th Annual Las Cruces Arts Fair

Las Cruces Convention Center. \$10-15. 575-523-6403

Aggie Men's Baseball vs. Delaware

NMSU Presley Askew Field. \$5. nmstatesports.com

Play: Silent Sky

NMSU Center for the Arts. \$5-18. nmsutheatre.com/events

MARCH 2

Oñate the Spanish Conquerer - Neither Spanish nor Conquerer

Leasburg Dam State Park. \$5. 575-524-4068. nmparks.com

Movie: Lemony Snicket's Series of Unfortunate Events

Rio Grande Theatre. Noon. Free. riograndetheatre.org

Aggie Women's Basketball vs. Chicago State

NMSU Pan Am Ctr. 12pm \$8-31. nmstatesports.com

MARCH 2 - 3

Cowboy Days

New Mexico Farm & Ranch Heritage Museum. \$5. frhm.org

8th Annual Sierra Vista Trail Run

Organ Mountains Desert Peaks National Monument. sierravistatrailrun.com

MARCH 3

Sousa Spectacular Concert

Downtown Plaza de Las Cruces. 3-4:30pm. Free. 575-646-2304

MARCH 5

Aggie Women's Softball Team vs. Arizona

New Mexico State University Softball Complex. \$7. nmstatesports.com

MARCH 6

NMSU Climate Change Seminar

Rio Grande Theatre. 7pm. Free. riograndetheatre.org

MARCH 7

Feed Your Mind Series: This History of Women in Art

DAAC & Cultural Center. 5:30-7:30pm. \$20. daarts.org

MARCH 8

Play: A Children's Theatre - The Hobbit

Rio Grande Theatre. \$8. 575-541-2290. riograndetheatre.org

MARCH 8 - 10

Aggie Men's Baseball vs. La Salle

NMSU Presley Askew Field. \$5. nmstatesports.com

MARCH 9

Oñate the Spanish Conquerer - Neither Spanish nor Conquerer

Leasburg Dam State Park. \$5. 575-524-4068. nmparks.com

Play: A Children's Theatre - The Hobbit

Rio Grande Theatre. 1pm. \$8. 575-541-2290. riograndetheatre.org

MARCH 9 - 10

Mesilla Valley Stamp Club

Las Cruces Convention Center. Free. 575-202-1937

Classic 3, Andrea Padova, Piano

NMSU Center for the Arts. \$40-50. lascrucessymphony.com

MARCH 15

Play: A Children's Theatre - The Hobbit

Rio Grande Theatre. 7pm. \$8. riograndetheatre.org

MARCH 15 - 17

One-Act Play Festival

Las Cruces Community Theatre. Free/donations accepted. lcctnm.org

MARCH 16

NMSU International Festival

Downtown Plaza de Las Cruces. Free. 575-646-7965

Play: A Children's Theatre - The Hobbit

Rio Grande Theatre. 1pm. \$8. 575-541-2290. riograndetheatre.org

Classic Film Series: CHINATOWN

Rio Grande Theatre. \$8. riograndetheatre.org

MARCH 16 - 17

Bellas Artes Artisan Show

Old Mesilla Plaza

MARCH 17

Annual Bataan Death March

White Sands Missile Range. 6am. Register by Mar. 3: bataanmarch.com

MARCH 19

Sarah Shook & The Disarmers

Rio Grande Theatre. \$10-12. riograndetheatre.org

MARCH 20

Harmik as Tom Jones

Rio Grande Theatre. 7pm. \$23.50. riograndetheatre.org

MARCH 21

Movie: Throwback Thursdays - Coming to America

Rio Grande Theatre. 7pm. \$5. 575-541-2290. riograndetheatre.org

MARCH 22 - 24

Aggie Men's Baseball vs. CSU Bakersfield

NMSU Presley Askew Field. \$5. nmstatesports.com

USSSA Youth Baseball Super NIT

Information ussabaseballnewmexico.com

MARCH 22 - APRIL 7

Play: Alice in Wonderland

Black Box Theatre. 8pm. \$10-15. nostrings.org

MARCH 23

Live Art Exhibit for our Place in Space

Downtown Plaza de Las Cruces. Free. lcspacefestival.com

Discover Camp Robledo

Leasburg Dam State Park. 10am-12:30pm. \$5. 575-524-4068

Aggie Women's Softball vs. North Dakota State

New Mexico State University Softball Complex. \$12-20. nmstatesports.com

Mack Goldsburgy & Allan Kaplan CD Release Party

Rio Grande Theatre. \$10. riograndetheatre.org

MARCH 24

Las Cruces Civic Concert -

Sergei Teleshev & Natasha Popova

Rio Grande Theatre. \$5-25, 17 & under free. riograndetheatre.org

MARCH 26

Aggie Men's Baseball vs. UNM

NMSU Askew Field. 6:05pm. \$7. nmstatesports.com

MARCH 28

NMSU Rodeo Week: Rodeo Rally

Downtown Plaza de Las Cruces. 6-8pm. \$5. 575-541-2361

Movie: Pure Country

Rio Grande Theatre. 7:30pm. \$5. riograndetheatre.org

MARCH 29

The Hard Road Trio

Rio Grande Theatre. 7pm. \$15-20. riograndetheatre.org

MARCH 29 - 30

Las Cruces Game Convention 2019

Las Cruces Convention Center. lcspacefestival.com

MARCH 29 - 31

NMSU Rodeo Week

Landmark Mercantile Arena. Day. rodeo.nmsu.edu

MARCH 30

Aggie Men's Tennis vs. Chicago State

NMSU Tennis Court. Time: TBA. nmstatesports.com

MARCH 31

Aggie Men's Tennis vs. Kansas City

NMSU Tennis Court. Time: TBA. 575-646-1420. nmstatesports.com

Every effort has been made to ensure the accuracy of the information. Because of the extensive number of sources used, however, the City of Las Cruces assumes no responsibility for errors, changes, or omissions.



New Foundation fund benefits eight organizations

For the eighth year in a row, a local philanthropic family is changing our community for the better.

Recently, eight organizations were awarded grants through the Community Foundation of Southern New Mexico's Devasthali Family Foundation Fund. A total of \$39,000 was awarded during the spring 2019 grant cycle to nonprofit organizations with programs supporting the arts, education and child hunger.

Organizations benefiting from the recent grant are Casa de Peregrinos for the Summer Food Youth Program; NMSU Foundation for the Feminist Border Arts Film Festival;



APRIL ANAYA

Community Foundation of Southern New Mexico

NMSU Foundation for the 51st NMSU Jazz Festival; Play Sharity for the Reggio Emilia Art and Maker-space; NMSU Foundation for the Las Cruces International Film Festival; El Paso Pro Musica for the Ed-

ucational Outreach Music Program; The Children's Reading Alliance for the Summer Book Buddy Program; and Revolution 120 for the Heart of Doña Ana Emergency-Crisis Assistance Program.

"The support from the Devasthali family will allow us to continue sharing arts with Las Cruces and bringing musicians from the concert stage to the classroom to make



PHOTO COURTESY CFSNM

Devasthali Family Foundation Fund recipients.

music accessible to all," said El Paso Pro Musica's Executive Director Felipa Solis.

The fund was established in 2011 by Drs. Rama and Ammu Devasthali as a donor-advised fund to support grant-making for nonprofit organizations in southern New Mexico. Currently,

five donor advised funds are housed at the CFSNM.

"Donor-advised funds are unique in that donors are able to make a donation and receive an immediate tax benefit; however, the fund gives donors the flexibility to grant the funds out over a period of time,"

said CFSNM Executive Director Terra Winter. "Donors are then able to explore which causes mean the most to them and take the time to think through and research where they would like to direct their philanthropic investments."

The Devasthalis have seen the impact of their giving and the gratifying results that come with

the investments they make in our community through their donor-advised fund. "The Community Foundation acts as a one-stop shop for us to benefit several charities and areas of need that our important to us," said Ammu Devasthali.

The fall cycle of the Devasthali Family Foundation Fund at the CFSNM will open on June 3 and close on Aug. 2. Nonprofit organizations that did not receive funding in the spring 2019 cycle are encouraged to apply. For more information on this grant program, please contact Terra Winter at 575-521-4794 or email terra@cfsnm.org.

April Anaya may be reached at 575-521-4794 or april@cfsnm.org.

2 Unique Hospitals. 2 Distinct Specialties. 1 Convenient Location.



For the twelfth consecutive year, Rehabilitation Hospital of Southern New Mexico has been ranked in the Top 10% (12 years) of inpatient rehabilitation facilities nationwide.

At our state-of-the-art facility, we treat and care for patients who have suffered functional deficits from traumatic events such as brain injuries, stroke, amputations or any other debilitating illness or injury, and are certified with The Joint Commission in both Stroke and Brain Injury rehabilitation.



REHABILITATION HOSPITAL
OF SOUTHERN NEW MEXICO



ADVANCED CARE HOSPITAL
OF SOUTHERN NEW MEXICO

We are passionate patient caregivers.

RHSNM.ernesthealth.com

4441 East Lohman Ave. • Las Cruces, NM • ph: 575.521.6400



At our state-of-the-art long-term acute hospital, we provide care for patients who require additional time to heal from a catastrophic injury or illness. We treat patients requiring intensive care, ventilator/pulmonary care, medically complex care, modified rehabilitation, wound care and more, and have received The Joint Commission's Gold Seal of Approval for care provided.

ACHSNM.ernesthealth.com

4451 East Lohman Ave. • Las Cruces, NM • ph: 575.521.6600

THANK YOU FOR
RECYCLING!

¡Gracias por reciclar!

Recycle your paper, cardboard,
plastic, cans loose in your cart.
Recicle su papel, cartón, plástico,
latas sueltas en su carrito.

RECYCLE MORE
OF THESE:

RECICLAJE MÁS DE LO SIGUIENTE:



Paper
Papel

Mixed Paper, Newspaper,
and Magazines



Cardboard
El cartón

Cardboard, Cereal
and Dry Food Boxes
empty and flatten



Plastic
Plásticos

Kitchen, Laundry, and Bath
Bottles and Containers
empty and replace cap



Cans
Latas de metal

Aluminum and Steel Cans
empty and rinse



IT'S
ALL YOU
RECYCLE

Questions? CALL (575) 528-3800
www.SCSWA.net



South Central Solid Waste Authority

COMING UP

Archbishop visit: Archbishop Daniel, Western Eparch (leader) of the Ukrainian Orthodox Church of the USA, visits St. Anthony of the Desert Orthodox Mission, 518 N. Alameda, from Friday, March 1 to Sunday, March 3.

Auto Crime Prevention and Safety Event: Hosted by LCPD, 9 a.m.-4 p.m. Saturday, March 2, Walmart Supercenter, 571 Walton Blvd. Free VIN etching to all windows of vehicles.

Saturday Family Science: "Making Trackways," 11:30 a.m. Saturday, March 2, Museum of Nature & Science, 411 N. Main St. Free. Info: 575-522-3120; las-cruces.org.

Science and Engineering Fair: 11:45 a.m. Saturday, March 2, Corbett Center 3rd floor ballrooms, NMSU campus. Middle and high school students compete for the opportunity to compete in the New Mexico Science and Engineering Fair in Socorro. Open to the public.

Epilepsy Support Group: 1-2:30 p.m. Saturday,

March 2, Thomas Branigan Memorial Library, 200 E. Picacho Ave. Support for anyone with epilepsy, those who have loved ones with epilepsy, and caregivers of epileptics. Info: 505-243-9119 or EpilepsySupportNM.org.

Sierra Vista Trail Runs: Eighth annual, presented by the Southern New Mexico Trail Alliance. Five runs, all starting and finishing at the Sierra Vista Norte Trailhead off Dripping Springs Road, approximately 7.5 miles east of I-25. Registration: ultrasignup.com. Info: Peter Livingstone, 575-302-8897.

Back by Noon: Natural history/ecology outings, presented by the Southwest Environmental Center, Saturdays through May 11. Free, open to the public, bring sturdy footwear, water, sunscreen and a hat. Advance registration requested before each outing by calling 575-522-5552. Info: www.wildmesquite.org. The spring 2019 schedule:

- March 2, Border BioBlitz, Rio Bosque
- March 9, A Day at

Otero Mesa, Cornudas Mountains

- March 23, Explore the Aztec Caves, Franklin Mountains

USA Dance: Hosts a dance 2:45-5 p.m. Sunday, March 3, Belton Bridge Center, 1214 E. Madrid. Members \$5, non-members \$10. Free dance lesson: samba, the music of Brazil. Singles, couples, beginners, advanced. Info: Jerry, 575-639-3993; geraldcarolcarson@gmail.com.

The Roundtable Discussion Group: Meets 10:30-11:30 a.m. every Sunday in the Library of the Unitarian Church, 2000 S. Solano. Join the discussions. Our goal is to learn more about all sides of issues and more about each other. If you have a comment or suggestion, email it to roundtable@uuchurchlc.org.

- March 3: Jim Peach, regents emeritus, NMSU professor, "National and State Economic Trends" with emphasis on the oil industry

- March 10: Paul O'Connell, political economist, "Emergency at U.S.

Southern Border?"

- March 17: Joel Brown, rangeland scientist, Southwest Climate Hub, "Impact of climate change on Southwest Ecosystems"

- March 24: Greg Smith, Las Cruces city councilor, "Revitalizing Plans for Downtown Las Cruces"

- March 31: Billy Garrett, former Doña Ana County commissioner, "Ideas on how to deal with Polarization and Principles"

'All about Bats': Program hosted by Carlsbad Caverns National Park Rangers, 2-3 p.m. Monday, March 4, Branigan Memorial Library, 220 E. Picacho Ave. Info: 575-528-4005, library.reference@las-cruces.org.

Doña Ana Republican Party: Monthly meeting,

6 p.m. Monday, March 4, La Posta de Mesilla, 2410 Calle de San Albino. All Republicans invited. Info: Sue Butterfield, 575-523-8683; darpoffice@gmail.com.

Diabetes classes: 1-4 p.m. Tuesday-Thursday, March 5-7, Families and Youth, Inc., building, 1320 S. So-

lano. Info: 575-522-0289, snmndo@snmndo.org.

Academy for Learning in Retirement: Tuesday and Thursday programs on contemporary issues around the globe, at Good Samaritan Auditorium, 3011 Buena Vida. Meet at

SEE COMING UP, PAGE 12

GET THE FLAVOR OF LAS CRUCES

We Ship Nationwide!

in a Jar!

- Gift Baskets
- Besito Caliente
- Cherry A'More
- Cannon's Sweet Hots
- Various Chile Products
- Pecans

The Truck Farm
575-523-1447
645 S. Alameda
www.SWEETHOTS.com

ABC PROGRAM'S 18TH YEAR!

GAME ON!

with the
ABC PROGRAM SCHOOL SPIRIT EDITION

Get paid for getting A's!

Drop off a copy of your report card at one of our branches. Five winners per branch will earn up to \$100* for their A's. Participating schools receive a matching donation, too!* STOP BY TODAY!

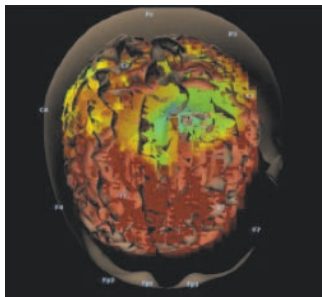
First National
1870
421 N. Water St.
3500 Northrise Dr.
2535 S. Telshor
575.525.8907
FirstNational1870.com/ABC
Member FDIC

MORE THAN \$1.2 MILLION DONATED TO SCHOOLS SINCE 2001

*Offer valid 1/1/19-3/31/19 and may be canceled without notice. School must be a participant in ABC Program to receive payment. No purchase necessary to enter report card drawing. Available for students in grade K-12. Drawing will take place 4/1/19. \$100 maximum payment per report card. First National 1870, a division of Sunflower Bank, N.A.

BrainWorks Neurofeedback

Neurofeedback is like GPS...directing the right way to go while training the brain!



Non-invasive
Non-medicated
Latest Technology used for
Learning Disabilities
ADHD/ADD
Sleep Disorders
Optimizing Cognitive Function
and MUCH MORE
Scientifically Validated

For more information, call 575.405.4142 or email brain_works@icloud.com

COMING UP

CONTINUED FROM 11

10 a.m. for cookies and coffee.

- March 5: Nathan Brooks, Russia.

- March 7: Ken Hammond, China
- March 12: Garcia-Bryce, Latin America
- March 14: Miriam Chai-ken, East-South Africa

Las Cruces Bead Society:

Welcoming New Patients!

Rahul Kataria, MD, FAAP
Board Certified Pediatrician

FAMILY CARE AND PEDIATRICS
2405 Telshor Blvd.
575-532-1001



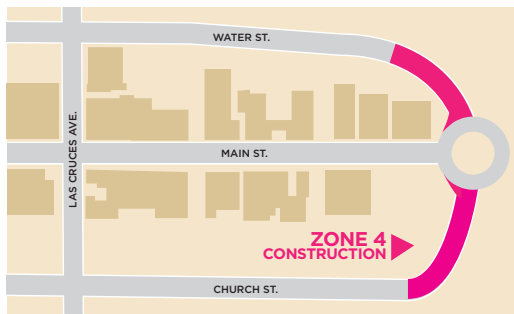
We accept Medicare, Medicaid, Tricare, Centennial Care and most private insurances.



New Mexico Primary Care Group, P.C.



Paving The Way to a Better Downtown.



Zone 4 of construction is now underway, and while some lanes may be closed, downtown businesses are still open. Get the the latest information on the construction process at our next open house or visit our web page.

NEXT OPEN HOUSE

March 21 | 5:30pm
Las Cruces Museum of Art
491 N Main Street

For more information call (575) 528-3477

Meets 5 p.m. Wednesday, March 6, Western Trad-ers, 1300 El Paseo. Info: 575-527-1470.

Southwest Climate Chal-enge: "Drought, Water Security and Ecosystem Disruption," by Dr. Jonathan Overpeck, dean of the School for Environ-ment and Sustainability, University of Michigan, 7 p.m. Wednesday, March 6, Rio Grande Theatre, 211 N. Main St. Free admis-sion, doors open at 6. Info: 575-541-2290.

Mesilla Valley Stamp Club: meets 6:30 p.m. Thursday, March 7, at the Belton Bridge Center, 1214 E. Ma-

drig. Free and open to the public. Info: 575-202-1937

Crafts for Kids: 10 a.m.-noon Saturday, NM Farm & Ranch Heritage Museum, 4100 Dripping Springs Road. Children of all ages are welcome to create their own craft to take home. Free with regular admission (\$5 adults, \$4 senior citizens, \$3 children 4-17).

- March 9: Visit the sheep at the museum and make your own sheep to take home.

- March 16: In honor of St. Patrick's Day, make a rainbow that ends in a pot of gold.

- March 23: Come celebrate the first day of spring by making paper flowers.

- March 30: Start your seeds in an eggshell planter that you can deco-rate. While supplies last.

'Meet Your Maker': Third annual, meet local pro-ducers of foods and care products, 10 a.m.-6 p.m. Saturday, March 9, Moun-tain View Market Co-op, 1300 El Paseo. Info: www.mountainviewmarket.coop.

Republican Women of Me-silla Valley: Monthly meet-ing 11:30 a.m. Saturday, March 9, Hacienda de Me-silla, 1891 Avenida de Me-silla. Info: Carol Cooper, 575-526-4983; tscooper@qwestoffice.net.

'Burrowing Owls': De-jeanne Doublet, a gradu-ate student at NMSU, gives a presentation on Burrowing Owl transloca-tions in Arizona, 1-2 p.m. Saturday, March 9, Wild Birds Unlimited, 2001 E. Lohman Ave. RSVP requested: 575-523-5489; wbulcnature@gmail.com.

Indivisible Las Cruces: "En-ergy at the crossroads," 5 p.m. Tuesday, March 12, Roadrunner Room of the Branigan Memorial Li-brary, 200 E. Picacho Ave.

Senior Olympic swimming: 8:30 a.m. Saturday, March 16, NMSU pool. Register by March 11. Info: 575-571-2274.

Social Media Marketing Seminar: 9 a.m.-4 p.m. Wednesday, March 13, DACC Workforce Center, 2345 Nevada Ave. Regis-ter at www.tinyurl.com/lascrucessbdcworkshops. Info: 575-527-7676; sb-dcinfo@nmsu.edu.

Construction disputes: How to handle and pre-vent without going to court, with guest speaker Peter G. Merrill, 1-4 p.m. Friday, March 15, LCHBA Event Hall, 2825 N. Main St. RSVP by March 13 to nicole@lchba.com or 575-526-6126.

AARP: Las Cruces Chap-ter 1230, 2 p.m. Wednes-day, March 20, at Senior Amigos behind Wal-green's on East Lohman and Roadrunner. Presen-tation by SW Environ-mental Center. Requesting items for infants 0-12 for donation to a local charity.

Military Officers As-sociation: Mesilla Valley Chapter meets 6 p.m. Wednesday, March 20, Las Cruces Convention Center. Dinner is \$28 per person. Info: Christine Sautter, 352-317-7129, or Bob Gaupel, 575-993-3060.

Las Cruces Junior Jazzer-cise: Two-day spring break mini-camp, March 26 and 28, 3217 El Camino. Crafts, games, performances. Cost: \$40 for both days, \$20

Save a Stamp, Pay Online!

Zia Natural Gas Company now offers online payments. Visit www.ziagas.com and create an online account today to access the following:

- View or print your bill
- View and compare usage history
- Sign up for email notifications for new bills
- Sign up for Pay-By-Text
- View your account balance
- Make an online payment



ZIA NATURAL GAS COMPANY
New Mexico's Natural Choice

575-526-4427 • 1-800-453-5546
3700 W. Picacho Ave • Las Cruces
www.ziagas.com

LC3-LV39388

SEE COMING UP, PAGE 13

COMING UP

CONTINUED FROM 12

for one. After March 19 the cost is \$50 and \$25. Contact Amy Richards, 941-705-0800 or lascrucesjunior-jazzercise@yahoo.com.

LCHS-MHS Class of 1969 50th Combined Reunion: Nov. 1-3. Info: Talea Alberson, tandealbertson@gmail.com, or Bill McKinney, bmckinney51@gmail.com (MHS); Lisa Gray, troop2030@aol.com, or Robert Francis, rwfrancis69@hotmail.com, 575-649-9565 (LCHS).

ONGOING

Back Country Horsemen-Lower Rio Grande Chapter: Trail riding and trail maintenance, meets the first Monday at 6:30 p.m. at Delicias Café, 1413 E. Amador Ave. Info: Lisa, 724-612-1226

Big Daddy's Flea Market: 7 a.m.-2 p.m., Saturdays and Sundays, 5580 Bataan Memorial East. Info: 575-382-9404.

Canasta games and lessons: 11:15 a.m. - 3:00 p.m. Wednesdays, Munson Center, 975 S Mesquite. Free.

Cruces Apple Users Group: Meets the second Saturday at DACC Espina Campus, Sanchez Hall, Room 114 at Espina and Gregg streets. Info: Louise Foster, louisefoster@mac.com; www.cauglc.org.

Farmers & Crafts Market: Regional produce, crafts and street musicians, 8:30 a.m.-1 p.m., Saturdays, Plaza de Las Cruces.

Geography Club: Explore culturally significant and historical sites in the Land

of Enchantment, 10 a.m.-noon every Saturday, Branigan Cultural Center, 501 N. Main St. Info: 575-541-2154.

Honors Flight of SNM: Veterans breakfast, 9 a.m. second Thursday, IHOP on Del Rey Boulevard. Info: John, 505-977-8579.

Las Cruces Civitan Club: Meets noon the second Tuesday and 6 p.m. fourth Tuesday, Los Compas Restaurant, 1120 Commerce Drive. Info: 575-649-0165.

Las Cruces Optimists Club: Meets 6:45 a.m. every Thursday at IHOP, 2900 Del Rey Blvd. New members welcome.

Las Cruces Shriners: Meet the second Monday, 1150 W. Brown. Info: 575-526-8396.

Military Order of the Purple Heart #2004: Meets 6 p.m. first Monday, American Legion #10, hall 1185. Info: 575-496-1312 or 575-644-1045.

Soroptimists: Noon, second and fourth Wednesday, Good Samaritan Village, 3010 Buena Vida Circle. Soroptimist International of Las Cruces is a women's advocacy group. Info: silascruces@soroptimist.net.

Spanish Conversation Group: 1:30-3 p.m. Tuesdays, Munson Center, 975 S. Mesquite St. Intermediate/advanced conversation group welcomes new people to converse entirely in Spanish and improve skills. Each week, participants choose two topics to discuss the following week. Info: 575-526-5174.

Special Forces Association: Chapter 80 meets 10 a.m. every fourth Saturday, 8936 Lisa Lane. Breakfast at 9 a.m.

ENERGY EFFICIENCY

BETTER FOR BUSINESS, BETTER FOR TOMORROW



New Mexico Commercial Customers Qualify for El Paso Electric Incentives!

Schedule an Energy Assessment with El Paso Electric before starting your project!

Eligible Measures

- Cool Roofs
- Pool Pumps
- Refrigeration Systems
- Commercial Kitchen Equipment
- Solar Screens and Window Film
- Chillers
- HVAC Equipment and Controls
- Qualified Lighting and Controls
- Vending Machines and Controls
- Variable Frequency Drives (VFDs)
- Custom Incentives for Other Measures



Please contact El Paso Electric for program details and energy saving tips

epesaver.com | (575)-523-3533

LEGAL NOTICES

Las Cruces Bulletin - your legal publication for
Las Cruces and Doña Ana County, New Mexico

Business Services

Dave's Yard Service Las Cruces & Doña Ana County

Mow, tree cutting, irrigation/fence repairs Senior Discounts Phone 575.621.6924 575.288.6881

Help Wanted Full-Time

NMSU-Facilities & Services seeks Project Manager, Facilities Req# 1901446S

Five (5) years of project management experience directly related to the standard duties as outlined. Bachelor's degree in related field and five (5) years of experience related to the standard duties as outlined or successful completion of a 4 or 5 years approved construction trades apprenticeship program resulting in a licensed journeyman. Possession of a valid unrestricted driver's license is a requirement for this job. Women, minorities, people with disabilities and veterans are strongly encouraged to apply. To view complete job posting and instructions on how to apply go to: <http://jobs.nmsu.edu/postings/34129>

Want to Rent

HOUSE FOR RENT

3bedrm, 2bath Brick Home Tiled floors w/yard 950.00 per mo + Sec Dep. avail Now 1440 Roberts Dr. Las Cruces NM 575-644-2885

Commercial Kitchen for Rent

Month to Month or Lease option available Ideal for food catering or food wholesalers Fully equipped Call for details: 408-518-3662

Vacation Rentals

ADVERTISE YOUR VACATION PROPERTY to more than 185,000 New Mexico newspaper readers. Your 25-word classified ad will appear in 23 newspapers around the state for only \$100. Call this newspaper for more details or visit www.nmpress.org for more details.

Commercial Rentals

Office Space
2141 Hammarand Ct
Suite E
1550 sq. ft.

Retail Location
820 Spruce
2456 sq. ft.

Retail Location
400-C N. Telshor
1252 sq. ft.

West Hadley Commercial Warehouses
Up to 2000 sq. ft.
Garage Doors, Heat/AC & Restrooms.

Call 575-526-8116
Leasing Services Inc.
1103 N. Solano

Miscellaneous

Get a SMARTPHONE for \$0 DOWN* with AT&T Next? and AT&T Next Every Year #8480 \$250 Gift Card for Switching to AT&T! (*Req's well-qualified credit. Limits & restr's apply.) 1-888-989-2198

DIRECTV & AT&T. 155 Channels & 1000s of Shows/Movies On Demand (w/SELECT Package.) AT&T Internet 99 Percent Reliability. Unlimited Texts to 120 Countries w/AT&T Wireless. Call 4 F R E E Q u o t e - 1-888-758-5998

DISH Network \$69.99 For 190 Channels. Add High Speed Internet for ONLY \$14.95/month. Best Technology. Best Value. Smart HD DVR Included. FREE Installation. Some restrictions apply. Call 1-855-404-4306.

VIAGRA and CIALIS USERS! Cut your drug costs! SAVE \$\$\$! 50 Pills for \$99.00. FREE Shipping! 100% Guaranteed and Discreet. CALL 1-844-797-6548.

383+ Acre Farm Auction A Horseman's Dream Near Hatch, NM Custom Home & More Bidding Ends 4/3 www.NMFarmAuction.com United County Revolution 575-652-3152 Melissa Y. Roybal, Lic# 19771 5% BP=NMGR. See website for terms.

Do you use a CPAP machine for SLEEP APNEA? Get your FDA approved CPAP machine and supplies at little or no cost! Free sleep supplement and sleep guide included! Call 855-999-9828! (Mon-Fri)

Over \$10K in debt? Be debt free in 24-48 months. Pay a fraction of what you owe. A+ BBB rated. Call National Debt Relief 844-283-0412.

OXYGEN - Anytime. Anywhere. No tanks to refill. No deliveries. The All-New Inogen One G4 is only 2.8 pounds! FAA approved! FREE info kit: 866-464-6041.

Safe Step Walk-In Tub, #1 Selling Walk-in Tub in North America. BBB Accredited. Arthritis Foundation Commendation. Therapeutic Jets. MicroSoothe Air Therapy System. Less than 4 Inch Step-In. Wide Door. Anti-Slip Floors. American Made. Call 855-785-0832 for up to \$1500 Off.

With Medicare, shopping around is key. Compare FREE Quotes from A-Rated Carriers to Save on a Medigap Plan Today! Get Covered and Save!! Call 888-490-3959

Applying for Social Security Disability or Appealing a Denied Claim? Call Bill Gordon & Assoc., Social Security Disability Attorneys, 1-855-380-6225. FREE Consultations. Local Attorneys Nationwide [Mail: 2420 N St NW, Washington DC. Office: Broward Co. (TX/NM Bar)]

Viasat Satellite Internet. Up to 12 Mbps Plans Starting at \$30/month. Our Fastest Speeds (up to 50 Mbps) & Unlimited Data Plans Start at \$100/month. Call Viasat today! 1-855-260-8627

Randy K. Mapes
Woodwind Instructor Masters degree in Music Private & Group Music Lessons Flute-Oboe-Bassoon-Clarinet-Saxophone Serving the Las Cruces Area 601-519-9569 rmapes45@outlook.com 30 years college level teaching experience



Earthlink High Speed Internet. As Low As \$14.95/month (for the first 3 months.) Reliable High Speed Fiber Optic Technology. Stream Videos, Music and More! Call Earthlink Today 1-888-805-8653.

SAVE on Medicare Supplement Insurance! FAST and FREE Quote from eHealth. Compare! Call NOW! (Annual Election Period October 15th - December 7th.) CALL 1-877-358-0472.

DONATE YOUR CAR, TRUCK OR BOAT TO HERITAGE FOR THE BLIND. Free 3 Day Vacation, Tax Deductible, Free Towing, All Paperwork Taken Care Of. CALL 1-877-613-0103.

GOT AN OLDER CAR, VAN OR SUV? Do the humane thing. Donate it to the Humane Society. Call 1-877-929-1711.

With Medicare, shopping around is key. Compare FREE Quotes from A-Rated Carriers to Save on a Medigap Plan Today! Get Covered and Save!! Call 888-490-3959

COMPUTER ISSUES? FREE DIAGNOSIS by GEEKS ON SITE! Virus Removal, Data Recovery! 24/7 EMERGENCY SERVICE. In-home repair/On-line solutions. \$20 OFF ANY SERVICE! 855-316-1077

Still paying too much for your MEDICATION? Save up to 90% on RX refill! Order today and receive free shipping on 1st order prescription required. 844-819-4673

Mental Health Professionals Preferred. Office space in small, professional building in Alameda / downtown area. Collegial atmosphere. Rent includes utilities, internet, shredding, use of copier/fax and shared use of conference / group room. 96 sq ft office - \$360/mo. 186 sq ft office - \$620/mo. Use of office phone # and clerical support negotiable. Year lease required. Inquiries, call (575) 524.9157



Legal Notice

Jamie Stull Storage Units 2 960 South Triviz Dr. Las Cruces, NM 88001

Richard Bridges
1145 Monte Vista #18
Las Cruces, NM 88001

Notice is hereby give that all the contents of your storage unit(s) 213 at Stull Storage

Units #2 will be SOLD AT AUCTION to satisfy our lien in the amount of \$500.00, which includes legal costs and fees.

The contents of the unit consists of

Bins, Table, Misc, Boxes

Date of Auction: March 12, 2019 at 10 a.m.
Place: Stull Storage Units, 960 S. Triviz Dr., Las Cruces, NM 88001

El Toro says, "Shop at **BIG DADDY'S FLEA MARKET**"
Open Saturday & Sunday
5580 Bataan Memorial East Hwy. 70 East of Las Cruces 575-382-9404

Stull Storage #2-Agent
Laura Stull Kaczmarek,
Manager
(575) 525-2927

Jamie Stull Storage Units 2 960 South Triviz Dr. Las Cruces, NM 88001

Jennifer McConnell
1417 Luna
Las Cruces, NM 88001

Notice is hereby give that all the contents of your storage unit(s) 724 at Stull Storage

Units #2 will be SOLD AT AUCTION to satisfy our lien in the amount of \$395.00, which includes legal costs and fees.

The contents of the unit consists of

Bins, Boxes, Clothes, Misc.

Date of Auction: March 12,

2019 at 10 a.m.
Place: Stull Storage Units, 960 S. Triviz Dr., Las Cruces, NM 88001

Jamie Stull Storage Units 2 960 South Triviz Dr. Las Cruces, NM 88001

Jennifer McConnell
1417 Luna
Las Cruces, NM 88001

Notice is hereby give that all the contents of your storage unit(s) 40 at Stull Storage

Units #2 will be SOLD AT AUCTION to satisfy our lien in the amount of \$395.00, which includes legal costs and fees.

The contents of the unit consists of

Vehicle Seats, Boxes, Bins, Misc.

Date of Auction: March 12, 2019 at 10 a.m.
Place: Stull Storage Units, 960 S. Triviz Dr., Las Cruces, NM 88001

Dates: 02/22, 03/01, 2019

NOTICE is hereby given that on December 14, 2018, the Judy Darnall Trust, PO Box 502 Mesilla, NM 88046, filed application number LRG-01701-POD3, OSE File No. LRG-01701-1 with the state Engineer for Permit to Change Location of Well within the Lower Rio Grande Underground Water Basin in Doña Ana County by discontinuing the use of well LRG-01701-S, located within the SE 1/4 SE 1/4 SE 1/4 of projected Section 25, Township 23S, Range IE (NMPM), and more specifically located where Latitude and Longitude intersect at 32° 16' 18.6" N, 106° 47' 14.44" W (WGS84), on land owned by the applicant, and by drilling well LRG-01701-POD3 to a depth of 120 ft. with a 12 in. casing, to be located within the SE 1/4 SE 1/4 SE 1/4 of projected Section 23, Township 23S, Range IE (NMPM) and more specifically located where Latitude and Longitude intersect at 32° 16' 18.59" N, 106° 47' 14.39" W (WGS84), on land owned by the applicant, for the continued diversion of the amount of water subject to all conditions and provisions contained in the Final Judgment and Settlement Agreement in Stream System Issue No. 101, SS-97-101, filed August 22,

2011, combined with surface water from the Elephant Butte Irrigation District for the irrigation of 4.22 acres of land, owned by the applicant, located within the SE 1/4 SE 1/4 of projected Section 25, Township 23S, Range IE (NMPM), the NE 1/4 NE 1/4 NE 1/4 of projected Section 36, Township 23S, Range IE (NMPM), and the NW 1/4 NW 1/4 NW 1/4 of projected Section 3 1, Township 23S, Range 2E (NMPM), as described by Subfile Order No. LRN-28013-0186, Right A of the Third Judicial District Court, Dona Ana County, State of New Mexico.

The applicant has requested emergency authorization to drill the proposed well under NMSA, 1978, Section 72-12-22.

Old well LRG-01701-S will be retained for other rights. The site of proposed well LRG-01 701-POD3 is located in Mesilla, NM and is approximately 807 feet southwest of the intersection of University Ave. and Camino Castillo.

Any person, firm or corporation or other entity having standing to file objections or protests shall do so in writing (objection must be legible, signed, and include the writer's complete name, phone number, email address, and mailing address). The objection to the approval of the application must be based on: (1) Impairment; if impairment, you must specifically identify your water rights; and/or (2) Public Welfare/Conservation of Water; if public welfare or conservation of water within the state of New Mexico, you must show how you will be substantially and specifically affected. The written protest must be filed, in triplicate, with the State Engineer, 1680 Hickory Loop, Suite J, Las Cruces, NM 88005 within ten (10) days after the date of the last publication of this Notice. Facsimiles (faxes) will be accepted as a valid protest as long as the hard copy is hand-delivered or mailed and postmarked within 24-hours of the facsimile. Mailing postmark will be used to validate the 24-hour period. Protests can be faxed to the Office of the State

Mountain Music
2330 S. Valley Drive
523-0603
GUITARS
Amplifiers
PA Equipment
Hand Percussion
Effects Pedals & Processors
Used Stereo Audio Components
Basses
Mandolins • Violins • Banjos
Recording King • Morgan Monroe • Savannah VMT
Red Line • Lucida • Revival
Consignment Sales • Trade-ins at 100 percent
Half-price String Sets Sat. & Sun. Each Week!
CHECK US OUT ON
CRAIG'S LIST & FACEBOOK
M-F 10AM - 6PM
SATURDAY 10AM - 4PM
SUNDAY 10AM - 2PM

LEGAL NOTICES

*Las Cruces Bulletin - your legal publication for
Las Cruces and Doña Ana County, New Mexico*

Engineer, 575-524-6160. If no valid protest or objection is filed, the State Engineer will evaluate the application in accordance with the provisions of Chapter 72 NMSA 1978.

Dates: 03/01, 03/08, 03/15, 2019

NOTICE is hereby given that on January 25, 2019, Miguel & Claudia Camacho, 617 Wallace Road, Anthony, NM, 88021, filed application numbered LRG-15156-POD 1, OSE File No. LRG-15156, with the State Engineer for Permit to Change an Existing Water Right within the Lower Rio Grande Underground Water Basin in Doña Ana County to drill proposed supplemental well LRG-15156-POD1 to a depth of 200 feet with an 8-inch casing, in a location within the NE 1/4 SW 1/4 of projected Section 28, Township 27S, Range 3E (NMPM) and more specifically located at or near where Latitude and Longitude intersect at 31 05' 48.466" N and 106°038'40.994" W (WGS84), on land owned by the applicants, which will supplement existing well LRG-10075, located on property owned by Triple D Farms, Inc. within the SE 1/4 SW 1/4 of said projected Section 28 and more specifically described where Latitude and Longitude intersect at 31° 05' 30.452" N and 106°38'36.217" W (WGS84), for the continued diversion of an amount of shallow groundwater reserved for future determination by the May 24, 1999 Order of the Third Judicial District Court, Doña Ana County, State of New Mexico, combined with surface water from the Elephant Butte Irrigation District, for the irrigation of 5.72 acres of land, owned by the applicants, located within the W 1/2 of said projected Section 28 as described in Subfile No. LRS 28-018-0126 of the Lower Rio Grande Hydrographic Survey. The applicant has requested emergency authorization to drill the proposed well under NMSA, 1978, Section 72-12-24. The site of proposed well LRG-15156-POD1 will be located southeast of La Union, NM and may be found approximately 0.55 miles southeast of the intersection of Hallas Rd. and Casad Rd.

Any person, firm or corpora-

tion or other entity having standing to file objections or protests shall do so in writing (objection must be legible, signed, and include the writer's complete name, phone number, email address, and mailing address). The objection to the approval of the application must be based on: (1) Impairment; if impairment, you must specifically identify your water rights; and/or (2) Public Welfare/Conservation of Water; if public welfare or conservation of water within the state of New Mexico, you must show how you will be substantially and specifically affected. The written protest must be filed, in triplicate, with the State Engineer, 1680 Hickory Loop, Suite J, Las Cruces, NM 88005, within ten (10) days after the date of the last publication of this Notice. Facsimiles (faxes) will be accepted as a valid protest as long as the hard copy is hand-delivered or mailed and postmarked within 24-hours of the facsimile. Mailing postmark will be used to validate the 24-hour period. Protests can be faxed to the Office of the State Engineer, 575-524-6160. If no valid protest or objection is filed, the State Engineer will evaluate the application in accordance with the provisions of Chapter 72 NMSA 1978.

Dates: 02/22, 03/01, 03/08, 2019

NOTICE is hereby given that on January 18, 2019, David Rodriguez, 1009 E. Kansas, Las Cruces, NM, 88001 filed application numbered LRG-16072-POD2, OSE file number LRG-16072-1, with the State Engineer for permit to Change an Existing Water Right within the Lower Rio Grande Underground Water Basin in Doña Ana County by drilling replacement well LRG-16072-POD2 with a 4-inch casing to a depth of 150 feet on land owned by the applicant, located within the SW 1/4 NW 1/4, Section 24, Township 21S, Range 1W (NMPM) and more specifically located near the intersection of X=1,439,164ft Y=535,544ft, NMSP, Central NAD83, for the continued diversion of up to 3.0 acre-feet per annum for domestic one-household purposes as described by Subfile Order No.: LRN-280020034 of the Lower Rio Grande Adjudication. Existing well

LRG-16072-POD1 will be properly plugged. The applicant requested emergency authorization to drill replacement well under NMSA, 1978, Section 72-12-22. The proposed replacement well LRG-16072-POD2 will be located at the physical address of 795 Hayride Road, North of Las Cruces, NM.

Any person, firm or corporation or other entity having standing to file objections or protests shall do so in writing (objection must be legible, signed, and include the writer's complete name, phone number, email address, and mailing address). The objection to the approval of the application must be based on: (1) Impairment; if impairment, you must specifically identify your water rights; and/or (2) Public Welfare/Conservation of Water; if public welfare or conservation of water within the state of New Mexico, you must show how you will be substantially and specifically affected. The written protest must be filed, in triplicate, with the State Engineer, 1680 Hickory Loop, Suite J, Las Cruces, NM 88005, within ten (10) days after the date of the last publication of this Notice. Facsimiles (faxes) will be accepted as a valid protest as long as the hard copy is hand-delivered or mailed and postmarked within 24-hours of the facsimile. Mailing postmark will be used to validate the 24-hour period. Protests can be faxed to the Office of the State Engineer, 575-524-6160. If no valid protest or objection is filed, the State Engineer will evaluate the application in accordance with the provisions of Chapter 72 NMSA 1978.

Dates: 02/22, 03/01, 03/08,

NOTICE is hereby given that pursuant to Section 73-13-4 NMSA, the Board of Directors of Elephant Butte Irrigation District (District) will consider a Resolution to transfer water rights appurtenant to lands within the District which are not suitable for irrigation or capable of being properly irrigated to other lands within the District, if in the Board's judgement the land may be profitably irrigated and advantageously irrigated. The request is made by ELFIGO JR & SUE PADILLA who requests that the

Board suspend a total of 6.00 acres of water rights from lands located in Section 32, Twp. 23S, Range 2E NMPM., and being a part of USRS Map 13-12A, 11-180 PT OF and transfer them to lands owned by ELIGO JR & SUE PADILLA TRUSTEES PADILLA FAMILY TRUST located in Section 5, Twp. 24S, Range 2E, NMPM, being a part of USRS Map 13-21. The place of the hearing is the offices of the District located at 530 S. Melendres, Las Cruces, New Mexico, and the date of the hearing is March 13, 2019 at 11:30 a.m. Protest or protests from any person or persons interested may be heard at the hearing. At the end of the hearing, the Board of Directors shall take formal action upon the Resolution. Any protestant or protestant's may appeal the decision of the Board directly to District Court within 10 days of the adoption or rejection of the Resolution.

Date: 03/01, 2019

NOTICE is hereby given that pursuant to Section 73-13-4 NMSA, the Board of Directors of Elephant Butte Irrigation District (District) will consider a Resolution to transfer water rights appurtenant to lands within the District which are not suitable for irrigation or capable of being properly irrigated to other lands within the District, if in the Board's judgement the land may be profitably irrigated and advantageously irrigated. The request is made by ANDREW & MARIE DE LA TORRE TRUSTEES ANDREW & MARIE DE LA TORRE FAMILY TRUST & PATRICIA A TAYLOR who requests that the Board suspend a total of 0.24 acres of water rights from lands located in Section 24, Twp. 21S, Range 2W NMPM., and being a part of USRS Map 2-1R and transfer them to lands owned by CONSTANCIA TRUJILLO located in Section 20, Twp. 27S, Range 3E, NMPM, being a part of USRS Map 30-101B1 TR 1. The place of the hearing is the offices of the District located at 530 S. Melendres, Las Cruces, New Mexico, and the date of the hearing is March 13, 2019 at 11:30 a.m. Protest or protests from any person or persons interested may be heard at the hearing. At the end of the hearing, the Board of Direc-

Date: 03/01, 2019

PROPOSED ORDINANCES

The Board of Trustees of the Village of Hatch, New Mexico, does propose to adopt at a regular meeting to be held on Tuesday, March 12, 2019, at 6:00 p.m., the following Ordinances;

An Ordinance to amend Village Code Title 4, Economic Development plan, by adding Section 4.08 Hatch

tors shall take formal action upon the Resolution. Any protestant or protestant's may appeal the decision of the Board directly to District Court within 10 days of the adoption or rejection of the Resolution."

Date: 03/01, 2019

NOTICE is hereby given that pursuant to Section 73-13-4 NMSA, the Board of Directors of Elephant Butte Irrigation District (District) will consider a Resolution to transfer water rights appurtenant to lands within the District which are not suitable for irrigation or capable of being properly irrigated to other lands within the District, if in the Board's judgement the land may be profitably irrigated and advantageously irrigated. The request is made by ANDREW & MARIE DE LA TORRE TRUSTEES ANDREW & MARIE DE LA TORRE FAMILY TRUST & PATRICIA A TAYLOR who requests that the Board suspend a total of 2.00 acres of water rights from lands located in Section 24, Twp. 21S, Range 2W NMPM., and being a part of USRS Map 2-1R and transfer them to lands owned by ROBERT R TRUJILLO located in Section 20, Twp. 27S, Range 3D, NMPM, being a part of USRS Map 30-101B1 TR 2. The place of the hearing is the offices of the District located at 530 S. Melendres, Las Cruces, New Mexico, and the date of the hearing is March 13, 2019 at 11:30 a.m. Protest or protests from any person or persons interested may be heard at the hearing. At the end of the hearing, the Board of Directors shall take formal action upon the Resolution. Any protestant or protestant's may appeal the decision of the Board directly to District Court within 10 days of the adoption or rejection of the Resolution.

Date: 03/01, 2019

NOTICE is hereby given that pursuant to Section 73-13-4 NMSA, the Board of Directors of Elephant Butte Irrigation District (District) will consider a Resolution to transfer water rights appurtenant to lands within the District which are not suitable for irrigation or capable of being properly irrigated to other lands within the District, if in the Board's judgement the land may be profitably irrigated and advantageously irrigated. The request is made by ANDREW & MARIE DE LA TORRE TRUSTEES ANDREW & MARIE DE LA TORRE FAMILY TRUST & PATRICIA A TAYLOR who requests that the Board suspend a total of 2.00 acres of water rights from lands located in Section 24, Twp. 21S, Range 2W NMPM., and being a part of USRS Map 2-1R and transfer them to lands owned by ROBERT R TRUJILLO located in Section 20, Twp. 27S, Range 3D, NMPM, being a part of USRS Map 30-101B1 TR 2. The place of the hearing is the offices of the District located at 530 S. Melendres, Las Cruces, New Mexico, and the date of the hearing is March 13, 2019 at 11:30 a.m. Protest or protests from any person or persons interested may be heard at the hearing. At the end of the hearing, the Board of Directors shall take formal action upon the Resolution. Any protestant or protestant's may appeal the decision of the Board directly to District Court within 10 days of the adoption or rejection of the Resolution.

Date: 03/01, 2019

PROPOSED ORDINANCES

The Board of Trustees of the Village of Hatch, New Mexico, does propose to adopt at a regular meeting to be held on Tuesday, March 12, 2019, at 6:00 p.m., the following Ordinances;

An Ordinance to amend Village Code Title 4, Economic Development plan, by adding Section 4.08 Hatch

Valley Economic Development Council, establishing an effective date; and providing for repeal and severability.

An Ordinance to amend the Village Code Title 4, Economic Development Plan Section 4.04.050 definitions (Enabling Organization), establishing an effective date; and providing for repeal and severability.

An Ordinance to amend the Village Code Chapter 5.12 Public Activity Permits Section 5.12.065 Fees.

An Ordinance to repeal Village Code Chapter 13.16 Natural Gas Service Rates and Charges all sections in its entirety.

An Ordinance to repeal Village Code Chapter 15.12 Gas Code all sections in its entirety.

This proposed ordinances are on file in its entirety in the Clerk's Office of the Village of Hatch, located at 133 N Franklin Street, Hatch, New Mexico, and may be reviewed during normal office hours.

/s/ Andy Nunez
Andy Nunez, Mayor

ATTEST:
Elizabeth J. Porras
Clerk/Treasurer

Dates: 02/22, 03/01, 2019

STATE OF NEW MEXICO COUNTY OF DONA ANA THIRD JUDICIAL DISTRICT COURT

No. D-307-PB-2019-00022
Judge Arrieta, Manuel I.

IN THE MATTER OF THE ESTATE OF: LORETTA C. GANTKES- SY, DECEASED.

NOTICE TO CREDITORS

NOTICE IS HEREBY GIVEN that **RODOLFO ROMERO** has been appointed personal representative of this estate. All persons having claims against this estate are required to present their claims within four (4) months after the date of the first publication of any published notice to creditors

or sixty (60) days after the date of mailing or other delivery of this notice, whichever is later, or the claims will be forever barred. Claims must be presented either to personal representative at the address listed below, or filed with the Third Judicial District Court of Dona Ana County, located at 201 W. Picacho Ave., Las Cruces, NM 88005.

DATED this 13th day of February, 2019.

KEITHLY & ENGLISH, LLC

/s/ Shane A. English

SHANE A. ENGLISH
Attorney for Rodolfo Romero,
Personal Representative
N.M. State Bar No. 4854
Post Office Drawer 1329
Anthony, NM 88021
(575) 882-4500
(575) 882-5000 [FAX]
kne1329@aol.com

Dates: 02/22, 03/01, 03/08, 2019

STATE OF NEW MEXICO COUNTY OF DONA ANA THIRD JUDICIAL DISTRICT COURT

Cause No. PB-2018-00041
Judge Manuel I. Arrieta

IN THE MATTER OF THE ESTATE OF ROBERT ARTHUR VOLPITTO, DECEASED.

NOTICE TO CREDITORS

Valerie Atmar has been appointed Personal Representative of the Estate of Robert Arthur Volpitto, deceased. All persons having claims against this estate are required to present their claims within two (2) months after the date of the first publication of this Notice or the claims will be forever barred. Claims must be presented either to the Personal Representative, 640 W. Las Cruces Avenue, Las Cruces, NM 88005, or filed with the District Court of Dona Ana County, 201 W. Picacho Ave., Las Cruces, New Mexico, 88005.

DATED: 02-13, 2019

/s/ Valerie J. Atmar
Valerie J. Atmar, Personal Representative of the Estate of Robert Arthur Volpitto
640 W. Las Cruces Avenue
Las Cruces, NM 88005

THE WOOD LA W FIRM, PLLC
By /s/
D. Lyle Wood
451 Guadalupe St., Ste. 203
Kerrville, TX 78028
830.522.4545
830.522.4547 (fax)
lyle@woodlawfirm.pro

Dates: 02/22, 03/01, 03/08, 2019

STATE OF NEW MEXICO COUNTY OF DOÑA ANA THIRD JUDICIAL DISTRICT COURT

CV-2019-00369
JUDGE MARTIN

IN THE MATTER OF THE PETITION OF KENNETH RAYMOND PAUL DICKERT, FOR CHANGE OF NAME.

NOTICE OF PETITION TO CHANGE NAME

NOTICE IS HEREBY GIVEN that **KENNETH RAYMOND PAUL DICKERT**, a resident of the City of Las Cruces, County of Doña Ana, State of New Mexico, and over the age of fourteen years, has filed a Petition to Change Name in the Third Judicial District Court, Doña Ana County, New Mexico, wherein he seeks to change his name from **KENNETH RAYMOND PAUL DICKERT** to **RAYMOND PAUL DICKERT**, and that this Petition will be heard before the Honorable James T. Martin, District Judge, on the 12th day of March, 2019, at 11 a.m., at the Doña Ana County District Courthouse, 201 W. Picacho, Las Cruces, New Mexico.

Submitted by:
Melissa J. Reeves-Evins
NM State Bar No. 7629
200 W. Las Cruces Avenue,
Suite A
Las Cruces, NM 88005
(575) 522-5009
Attorney for Petitioner

Dates: 02/22, 03/01, 2019

STATE OF NEW MEXICO COUNTY OF DOÑA ANA THIRD JUDICIAL DISTRICT COURT

No. D-307-PB-2018-00135
Judge Manuel I. Arrieta

IN THE MATTER OF THE ESTATE OF ROBERT A. HOWES,

LEGAL NOTICES

*Las Cruces Bulletin - your legal publication for
Las Cruces and Doña Ana County, New Mexico*

a/k/a **ROBERT ARTHUR HOWES, DECEASED**

NOTICE TO CREDITORS

NOTICE IS HEREBY GIVEN that the undersigned has been appointed personal representative of the estate of the decedent. All persons having claims against the estate of the decedent are required to present their claims within four (4) months after the date of the first publication of any published notice to creditors or sixty (60) days after the date of mailing or other delivery of this notice, whichever is later, or the claims will be forever barred. Claims must be presented either to the undersigned personal representative at the address listed below, or filed with the Third Judicial District Court in Doña Ana County, New Mexico, located at the following address: 201 W Picacho Avenue, Las Cruces, New Mexico 88005.

Dated: February 5, 2019

SCOTT RUSSELL HOWES
11920 Paseo del Rio
El Paso, Texas 79936

Dates: 02/22, 03/01, 03/08, 2019

STATE OF NEW MEXICO COUNTY OF DOÑA ANA THIRD JUDICIAL DISTRICT COURT

NO. CV-2019-187
JUDGE MANUEL I. ARRIETA

IN THE MATTER OF THE PETITION OF ISABEL AGUILERA-AGUILAR FOR CHANGE OF NAME OF IZAAH REY GALAZ

NOTICE OF PETITION TO CHANGE NAME (OF PERSON UNDER 14 YEARS OF AGE)

NOTICE IS HEREBY GIVEN that Isabel Aguilera-Aguilar, has filed a Petition to Change the Name of her child, from Izaiah Rey Galaz to Izaiah Rey Aguilera. This petition will be heard before the Honorable Manuel Arrieta, District Judge, on the 9th day of April, 2019 at the hour of 10:00 a.m., at the Doña Ana county Courthouse, 201 W. Picacho Las Cruces, New

Mexico.

Respectfully submitted,
/s/ Isabel Aguilera
Isabel Aguilera
4873 El Camino Real
Las Cruces, NM 88007
575-222-6846

Date: 03/01, 03/08, 2019

STATE OF NEW MEXICO COUNTY OF DOÑA ANA THIRD JUDICIAL DISTRICT COURT

NO. D-307-PB2019-13
JUDGE MARTIN

IN THE MATTER OF THE ESTATE OF BERNADETTE A. BOYD, Deceased.

NOTICE TO CREDITORS

NOTICE IS HEREBY GIVEN that **LAWRENCE D. BOYD** has been appointed Personal Representative of this estate. All persons having claims against said estate are required to present their claims within four (4) months after the date of the first publication of this Notice or the claims will be forever barred. Claims must be presented either to the undersigned counsel for Personal Representative or filed with the Clerk of the Third Judicial District Court, 201 W. Picacho, Las Cruces, New Mexico 88005.

MELISSA J. REEVES, P.C.
/s/ Melissa J. Reeves-Evins
Melissa J. Reeves-Evins
NM State Bar No. 7629
200 W. Las Cruces Ave., Ste. A
Las Cruces, NM 88005
575-522-5009 522-5031
FAX
Attorney for Personal Representative

Dates: 02/15, 02/22, 03/01, 2019

STATE OF NEW MEXICO COUNTY OF DOÑA ANA THIRD JUDICIAL DISTRICT COURT

D-307-CV-2018-02653
Judge Manuel I. Arrieta

IN THE MATTER OF THE PETITION OF CHAROLETTE KAREN KUMMEL, FOR CHANGE OF NAME

NOTICE OF PETITION

TO CHANGE NAME

NOTICE IS HEREBY GIVEN that **CHAROLETTE KAREN KUMMEL**, a resident of the City of Las Cruces, Doña Ana County, State of New Mexico, at the time of filing of the original Petition, and being over the age of fourteen (14) years, has filed a Petition to Change Name in the Third Judicial District Court, Doña Ana County, New Mexico, wherein she seeks to change her name from **CHAROLETTE KAREN KUMMEL** to **CHARLENE KAREN KUMMEL**, and that this Petition will be heard before the Honorable Manuel I. Arrieta, District Judge, on the 11th day of March, 2019, at the hour of 1:30pm, at the Third Judicial District Court, 201 W. Picacho Avenue, Las Cruces, Doña Ana County, New Mexico.

Respectfully submitted by:

The Law Offices of Dana M. Kyle, P.A.
By /s/ Dana M. Kyle
Dana M. Kyle
P.O. Box 2277
Las Cruces, NM 88004-2277
(575) 525-0020
(575) 525-0017 facsimile
Attorney for Petitioner

Dates: 02/22, 03/01, 2019

STATE OF NEW MEXICO COUNTY OF DOÑA ANA THIRD JUDICIAL DISTRICT COURT

No. D-307-PB-2018-00131
Judge James T. Martin

IN THE MATTER OF THE ESTATE OF JULIE QUILL LOOMIS, A/K/A JULIE Q. LOOMIS, DECEASED

NOTICE TO CREDITORS

NOTICE IS HEREBY GIVEN that **ADELE MORTON** has been appointed personal representative of this estate. All persons having claims against this estate are required to present their claims within four months after the date of the first publication of this Notice or the claims will be forever barred. Claims must be presented either to the personal representative in care of Alan D. Gluth, 2455 E. Missouri, Suite A, Las

Cruces, New Mexico 88001, or filed with the Third Judicial District Court of Dona Ana County, New Mexico, 201 W. Picacho Ave., Las Cruces, New Mexico 88005.

DATED: January 25, 2019.

ADELE MORTON
6120 Sierra Valle
El Paso, Texas 79912
Telephone: (915) 588-1589

Prepared by:
ALAN D. GLUTH
New Mexico Bar #14980
Gluth Law, LLC
2455 East Missouri, Suite A
Las Cruces, New Mexico 88001
Telephone: (575) 556-8449
Facsimile: (575) 556-8446

Dates: 02/22, 03/01, 03/08, 2019

STATE OF NEW MEXICO COUNTY OF DOÑA ANA THIRD JUDICIAL DISTRICT

Case No.:
D-307-CV-2018-00144

CORNERSTONE HOME LENDING, INC., Plaintiff,

vs.

CANDICE ANN NOLIN, Defendant.

NOTICE OF FORECLOSURE SALE

PLEASE TAKE NOTICE that the above-entitled Court, having appointed me or my designee as Special Master in this matter with the power to sell, has ordered me to sell the real property (the "Property") situated in Doña Ana County, New Mexico, commonly known as 2030 Pinecone Way, Las Cruces, NM 88012, and more particularly described as follows:

Lot 7, Block 4, THE PINES, UNIT ONE AT RANCHO DEL REY, in the City of Las Cruces, Doña Ana County, New Mexico, as shown and designated on the plat thereof, filed in the office of the County Clerk of Said County on November 22, 1991, in Book 17 Page(s) 105-107 of Plat Records. If there is a conflict between the legal description and the street address, the legal description shall control. The sale is to begin at 10:45 am on April 4,

2019, Third Judicial District Courthouse, City of Las Cruces, County of Doña Ana, State of New Mexico, at which time I will sell to the highest and best bidder for cash, in lawful currency of the United States of America, the Property to pay expenses of sale, and to satisfy the foreclosure Judgment granted on January 28, 2019 in the total amount of \$123,021.42 with interest at the rate of 4.50% per annum from November 16, 2018 through the date of the sale. The sale is subject to the entry of an Order by this Court approving the sale.

NOTICE IS FURTHER GIVEN that the real property and improvements concerned with herein will be sold subject to any and all patent reservations, easements, and all taxes and utility liens, special assessments and taxes that may be due. Cornerstone Home Lending, Inc., its attorneys, and the undersigned Special Master, disclaim all responsibility for, and the purchaser at the sale takes the property "as is," in its present condition, subject to the valuation of the property by the County Assessor as real or personal property, affixture of any mobile or manufactured home to the land, deactivation of title to a mobile or manufactured home on the property, if any, and zoning violations concerning the property, if any.

NOTICE IS FURTHER GIVEN that the purchaser at such sale shall take title to the above described real property subject to a one (1) month right of redemption.

PROSPECTIVE PURCHASERS AT SALE ARE ADVISED TO MAKE THEIR OWN EXAMINATION OF THE TITLE AND THE CONDITION OF THE PROPERTY AND TO CONSULT THEIR OWN ATTORNEY BEFORE BIDDING.

By: Robert Doyle
c/o Legal Process Network
P.O. Box 51526
Albuquerque, NM 87181

2 NM-17-784479-JUD
IDSPub #0150328

2/22/2019 3/1/2019
3/8/2019 3/15/2019

STATE OF NEW MEXICO COUNTY OF DOÑA ANA THIRD JUDICIAL DISTRICT

NO. D-307-CV-2019-00482
JUDGE BEYER

IN THE MATTER OF THE PETITION OF:

HANNAH ADELAIDE MARGARET BRYANT, FOR CHANGE OF NAME AN ADULT

NOTICE OF PETITION TO CHANGE NAME (ADULT)

NOTICE IS HEREBY GIVEN that, **HANNAH ADELAIDE MARGARET BRYANT**, a resident of La Union, Doña Ana County, State of New Mexico has filed a Petition to Change Name in the Third Judicial District Court, Doña Ana County, New Mexico, wherein she seeks to change her name as follows:

Current Name: HANNAH ADELAIDE MARGARET BRYANT

Proposed Name: ADELAIDE E. BRYANT

This Petition will be heard before the Honorable Marci E. Beyer, District Judge, on the 16th day of April 2019, at the hour of 11:00 a.m. at the Third Judicial District Court, 201 W. Picacho Ave., Las Cruces, New Mexico.

Respectfully submitted,
KEITHLY & ENGLISH, LLC
/s/ SHANE A. ENGLISH
SHANE A. ENGLISH
Attorney for Petitioner
N.M. Bar No. 4854
Post Office Drawer 1329
Anthony, NM 88021
(575) 882-4500
(575) 882-5000 FAX

Dates: 03/01, 03/08, 2019

STATE OF NEW MEXICO COUNTY OF DOÑA ANA THIRD JUDICIAL DISTRICT

Case No.:
D-307-CV-2016-01297

NATIONSTAR MORTGAGE LLC D/B/A CHAMPION MORTGAGE COMPANY, Plaintiff,

vs.

UNKNOWN HEIRS, DEVISEES AND LEGATEES OF LARRY L. LYON, DECEASED; PENELOPE A. KARSHNER; UNITED STATES OF AMERICA BY AND THROUGH THE SECRETARY OF HOUSING AND URBAN DEVELOPMENT; OCCUPANTS OF THE PROPERTY, Defendants.

NOTICE OF FORECLOSURE SALE

PLEASE TAKE NOTICE that the above-entitled Court, having appointed me or my designee as Special Master in this matter with the power to sell, has ordered me to sell the real property (the "Property") situated in Doña Ana County, New Mexico, commonly known as 2113 Pine Needle Way, Las Cruces, NM 88012, and more particularly described as follows:

LOT NUMBERED 15 IN BLOCK NUMBERED 5 OF THE PINES, UNIT TWO, LAS CRUCES, DOÑA ANA COUNTY, NEW MEXICO, AS THE SAME IS SHOWN AND DESIGNATED ON THE PLAT OF SAID THE PINES, UNIT TWO, FILED IN THE OFFICE OF THE COUNTY CLERK OF DOÑA ANA COUNTY, NEW MEXICO ON AUGUST 1, 1995 IN PLAT BOOK 18, FOLIO 303-304.

If there is a conflict between the legal description and the street address, the legal description shall control. The sale is to begin at 10:45 am on March 21, 2019, Third Judicial District Courthouse, City of Las Cruces, County of Dona Ana, State of New Mexico, at which time I will sell to the highest and best bidder for cash, in lawful currency of the United States of America, the Property to pay expenses of sale, and to satisfy the foreclosure Judgment granted on January 17, 2019 in the total amount of \$138,572.38 with interest at the rate of 3.57999% per annum from September 1, 2018 through the date of the sale. The sale is subject to the entry of an Order by this Court approving the sale.

NOTICE IS FURTHER GIVEN that the real property and improvements concerned with herein will be sold subject to any and all

patent reservations, easements, and all taxes and utility liens, special assessments and taxes that may be due. Nationstar Mortgage LLC D/B/A Champion Mortgage Company, its attorneys, and the undersigned Special Master, disclaim all responsibility for, and the purchaser at the sale takes the property "as is," in its present condition, subject to the valuation of the property by the County Assessor as real or personal property, affixture of any mobile or manufactured home to the land, deactivation of title to a mobile or manufactured home on the property, if any, environmental contamination on the property, if any, and zoning violations concerning the property, if any.

NOTICE IS FURTHER GIVEN that the purchaser at such sale shall take title to the above described real property subject to a one (1) month right of redemption.

PROSPECTIVE PURCHASERS AT SALE ARE ADVISED TO MAKE THEIR OWN EXAMINATION OF THE TITLE AND THE CONDITION OF THE PROPERTY AND TO CONSULT THEIR OWN ATTORNEY BEFORE BIDDING.

By: Robert Doyle
c/o Legal Process Network
P.O. Box 51526
Albuquerque, NM 87181

2 NM-16-732402-JUD
IDSPub #0150158

2/15/2019 2/22/2019
3/1/2019 3/8/2019

STATE OF NEW MEXICO COUNTY OF DOÑA ANA THIRD JUDICIAL DISTRICT

Case No.:
D-307-CV-2018-00404

NATIONSTAR MORTGAGE LLC D/B/A CHAMPION MORTGAGE COMPANY, Plaintiff,

vs.

ELVIRA MOLINA; UNITED STATES OF AMERICA BY AND THROUGH THE SECRETARY OF HOUSING AND URBAN DEVELOPMENT, Defendants.

NOTICE OF FORECLO-

LEGAL NOTICES

Las Cruces Bulletin - your legal publication for
Las Cruces and Doña Ana County, New Mexico

SURE SALE

PLEASE TAKE NOTICE that the above-entitled Court, having appointed me or my designee as Special Master in this matter with the power to sell, has ordered me to sell the real property (the "Property") situated in Dona Ana County, New Mexico, commonly known as 3110 Guadalupe St, Mesilla, NM 88046, and more particularly described as follows:

A TRACT OF LAND LOCATED IN THE TOWN OF MESILLA, DOÑA ANA COUNTY, NEW MEXICO, IN SECTION 36, T.23S., R.1E., N.M.P.M., OF THE U.S.R.S. SURVEYS AND BEING PART OF U.S.R.S. TRACT 118-70, AND BEING MORE PARTICULARLY DESCRIBED AS FOLLOWS, TO WIT: BEGINNING AT THE NORTHEAST CORNER OF THE TRACT HEREIN DESCRIBED, MARKED BY A FOUND 1/2" IRON ROD; WHENCE A CHANNEL IRON FOUND FOR THE NORTHEAST CORNER OF A TRACT OF LAND BELONGING TO DAVE P. SIMS AND JULIE SIMS AS RECORDED IN WARRANTY DEED FILED NOVEMBER 19, 2003 IN BOOK 479, PAGES 619-623 OF DOÑA ANA COUNTY CLERK RECORDS, BEARS N 23° 43' 06" E, A DISTANCE OF 624.56 FEET; THENCE FROM THE POINT OF BEGINNING AND ALONG THE WEST LINE OF CALLE DE GUADALUPE, S 22° 26' 30" E, A DISTANCE OF 206.94 FEET TO THE SOUTHEAST CORNER OF THE TRACT HEREIN DESCRIBED, MARKED BY A FOUND CHANNEL IRON; THENCE LEAVING SAID WEST LINE OF CALLE DE GUADALUPE AND ALONG THE SOUTH LINE OF A 20' ROAD EASEMENT, S 61° 35' 38" W, A DISTANCE OF 209.95 FEET TO AN ANGLE POINT OF THE TRACT HEREIN DESCRIBED, MARKED BY A FOUND 1/2" IRON ROD; THENCE PARTIALLY ALONG THE SOUTH LINE OF SAID EASEMENT S 58° 14' 40" W, A DISTANCE OF 409.20 FEET TO THE SOUTHWEST CORNER OF THE TRACT HEREIN DESCRIBED, MARKED BY A SET

1/2" IRON ROD, BEING A POINT ON THE EAST LINE OF THE MESILLA LATERAL; THENCE CONTINUING ALONG THE EAST LINE OF SAID MESILLA LATERAL THE FOLLOWING TWO COURSES AND DISTANCES: N 49° 38' 00" W, A DISTANCE OF 10.56 FEET TO AN ANGLE POINT OF THE TRACT HEREIN DESCRIBED, MARKED BY A SET 1/2" IRON ROD; THENCE N 09° 10' 34" W, A DISTANCE OF 248.54 FEET TO THE NORTHWEST CORNER OF THE TRACT HEREIN DESCRIBED, MARKED BY A FOUND 1/2" IRON ROD THENCE N 63° 06' 06" E, A DISTANCE OF 562.12 FEET TO THE PLACE AND POINT OF BEGINNING OF THE TRACT HEREIN DESCRIBED, CONTAINING 3.007 ACRES OF LAND, MORE OR LESS AND SUBJECT TO THE FOLLOWING 20 FOOT WIDE EASEMENT: BEGINNING AT THE SOUTHEAST CORNER OF THE EASEMENT HEREIN DESCRIBED, MARKED BY A FOUND CHANNEL IRON AND BEING IDENTICAL TO THE SOUTHEAST CORNER OF THE ABOVE DESCRIBED TRACT; THENCE FROM THE POINT OF BEGINNING AND ALONG THE SOUTH LINE OF THIS EASEMENT, S 61° 35' 38" W, A DISTANCE OF 209.95 FEET TO AN ANGLE POINT OF THE EASEMENT HEREIN DESCRIBED, MARKED BY A FOUND 1/2" IRON ROD; THENCE S 58° 14' 40" W, A DISTANCE OF 20.00 FEET TO THE SOUTHWEST CORNER OF THE EASEMENT HEREIN DESCRIBED; THENCE N 31° 45' 00" W, A DISTANCE OF 20.00 FEET TO THE NORTHWEST CORNER OF THE EASEMENT HEREIN DESCRIBED; THENCE N 58° 14' 40" E, A DISTANCE OF 20.58 FEET TO AN ANGLE POINT OF THE EASEMENT HEREIN DESCRIBED; THENCE N 61° 35' 38" E, A DISTANCE OF 212.63 FEET TO THE NORTHEAST CORNER OF THE EASEMENT HEREIN DESCRIBED; THENCE S 22° 26' 30" E, A DISTANCE OF 20.11 FEET TO THE PLACE AND POINT OF BEGINNING OF THE TRACT HEREIN DESCRIBED. SUBJECT

TO ANY AND ALL EASEMENTS OR RESTRICTIONS OF RECORD AS THEY MAY EXIST ON THE GROUND.

If there is a conflict between the legal description and the street address, the legal description shall control. The sale is to begin at 10:45 am on April 4, 2019, Third Judicial District Courthouse, City of Las Cruces, County of Dona Ana, State of New Mexico, at which time I will sell to the highest and best bidder for cash, in lawful currency of the United States of America, the Property to pay expenses of sale, and to satisfy the foreclosure Judgment granted on August 14, 2018 in the total amount of \$199,780.58 with interest at the rate of 6.450% per annum from May 1, 2018 through the date of the sale. The sale is subject to the entry of an Order by this Court approving the sale.

NOTICE IS FURTHER GIVEN that the real property and improvements concerned with herein will be sold subject to any and all patent reservations, easements, and all taxes and utility liens, special assessments and taxes that may be due. Nationstar Mortgage LLC D/B/A Champion Mortgage Company, its attorneys, and the undersigned Special Master, disclaim all responsibility for, and the purchaser at the sale takes the property "as is," in its present condition, subject to the valuation of the property by the County Assessor as real or personal property, affixture of any mobile or manufactured home to the land, deactivation of title to a mobile or manufactured home on the property, if any, environmental contamination on the property, if any, and zoning violations concerning the property, if any.

NOTICE IS FURTHER GIVEN that the purchaser at such sale shall take title to the above described real property subject to a one (1) month right of redemption.

PROSPECTIVE PURCHASERS AT SALE ARE ADVISED TO MAKE THEIR OWN EXAMINATION OF THE TITLE AND THE CONDITION OF THE PROPERTY AND TO CONSULT THEIR OWN ATTORNEY BEFORE BIDDING.

By: Robert Doyle
c/o Legal Process Network
P.O. Box 51526
Albuquerque, NM 87181

2 NM-18-805937-JUD
IDSPub #0150336

2/22/2019 3/1/2019
3/8/2019 3/15/2019

**STATE OF
NEW MEXICO
COUNTY OF
DOÑA ANA
THIRD JUDICIAL
DISTRICT**

Case No.:
D-307-CV-2018-01125

**REVERSE MORTGAGE
FUNDING LLC, Plaintiff,**

vs.

**THE UNKNOWN HEIRS,
DEWISES AND LEGATEES
OF LORRAINE
FERRIS, DECEASED;
UNITED STATES OF
AMERICA BY AND
THROUGH THE SECRETARY
OF HOUSING
AND URBAN DEVELOPMENT,
Defendants.**

NOTICE OF FORECLOSURE SALE

PLEASE TAKE NOTICE that the above-entitled Court, having appointed me or my designee as Special Master in this matter with the power to sell, has ordered me to sell the real property (the "Property") situated in Dona Ana County, New Mexico, commonly known as 2036 Briarwood Lane, Las Cruces, NM 88005, and more particularly described as follows:

LOT 14, BLOCK 13, CAMELOT GARDENS UNIT NUMBER 7, IN THE CITY OF LAS CRUCES, DOÑA ANA COUNTY, NEW MEXICO, AS THE SAME IS SHOWN AND DESIGNATED ON PLAT NO. 1636 THEREOF, FILED FOR RECORD IN THE OFFICE OF THE COUNTY CLERK OF SAID COUNTY ON AUGUST 5, 1987, AND RECORDED IN BOOK 15, PAGES 21-22, PLAT RECORDS. And also described as: LOT 14, BLOCK 13, CAMELOT GARDENS UNIT NUMBER 7, IN THE CITY OF LAS CRUCES, DOÑA ANA COUNTY, NEW MEXICO, AS SHOWN AND DESIGNATED ON THE PLAT THEREOF, FILED IN THE OFFICE OF

THE COUNTY CLERK OF SAID COUNTY ON AUGUST 5, 1987, IN BOOK 15, PAGE(S) 21-22 OF PLAT RECORDS.

If there is a conflict between the legal description and the street address, the legal description shall control. The sale is to begin at 10:45 am on April 4, 2019, Third Judicial District Courthouse, City of Las Cruces, County of Dona Ana, State of New Mexico, at which time I will sell to the highest and best bidder for cash, in lawful currency of the United States of America, the Property to pay expenses of sale, and to satisfy the foreclosure Judgment granted on January 28, 2019 in the total amount of \$65,214.66 with interest at the rate of 5.916% per annum from September 30, 2018 through the date of the sale. The sale is subject to the entry of an Order by this Court approving the sale.

NOTICE IS FURTHER GIVEN that the real property and improvements concerned with herein will be sold subject to any and all patent reservations, easements, and all taxes and utility liens, special assessments and taxes that may be due. Reverse Mortgage Funding LLC, its attorneys, and the undersigned Special Master, disclaim all responsibility for, and the purchaser at the sale takes the property "as is," in its present condition, subject to the valuation of the property by the County Assessor as real or personal property, affixture of any mobile or manufactured home to the land, deactivation of title to a mobile or manufactured home on the property, if any, environmental contamination on the property, if any, and zoning violations concerning the property, if any.

NOTICE IS FURTHER GIVEN that the purchaser at such sale shall take title to the above described real property subject to a one (1) month right of redemption.

PROSPECTIVE PURCHASERS AT SALE ARE ADVISED TO MAKE THEIR OWN EXAMINATION OF THE TITLE AND THE CONDITION OF THE PROPERTY AND TO CONSULT THEIR OWN ATTORNEY BEFORE BIDDING.

By: Robert Doyle
c/o Legal Process Network
P.O. Box 51526
Albuquerque, NM 87181

2 NM-18-811448-JUD
IDSPub #0150337

2/22/2019 3/1/2019
3/8/2019 3/15/2019

**STATE OF
NEW MEXICO
COUNTY OF
DOÑA ANA
THIRD JUDICIAL
DISTRICT**

Case No.:
D-307-CV-2018-01729

NATIONSTAR MORTGAGE LLC D/B/A MR. COOPER, Plaintiff,

vs.

JON P. MYLLYKAN-GAS; ADRIANA MARTINEZ, Defendants.

NOTICE OF FORECLOSURE SALE

PLEASE TAKE NOTICE that the above-entitled Court, having appointed me or my designee as Special Master in this matter with the power to sell, has ordered me to sell the real property (the "Property") situated in Dona Ana County, New Mexico, commonly known as 3766 Jade Court, Las Cruces, NM 88012, and more particularly described as follows:

LOT 13, BLOCK 4, LAS COLINAS SUBDIVISION, PHASE ONE, IN THE COUNTY OF DOÑA ANA, STATE OF NEW MEXICO, AS SHOWN AND DESIGNATED ON THE PLAT THEREOF, FILED IN THE OFFICE OF THE COUNTY CLERK OF SAID COUNTY AS PLAT NO. 1415 ON 02/26/1986 IN BOOK 14 PAGE(S) 148-50 OF PLAT RECORDS.

If there is a conflict between the legal description and the street address, the legal description shall control. The sale is to begin at 10:45 am on April 18, 2019, Third Judicial District Courthouse, City of Las Cruces, County of Dona Ana, State of New Mexico, at which time I will sell to the highest and best bidder for cash, in lawful currency of the United States of America, the Property to pay expenses of sale, and to satisfy the foreclosure Judgment granted on February 5,

2019, in the total amount of \$108,394.95 with interest at the rate of 3.75% per annum from October 1, 2018 through the date of the sale. The sale is subject to the entry of an Order by this Court approving the sale.

NOTICE IS FURTHER GIVEN that the real property and improvements concerned with herein will be sold subject to any and all patent reservations, easements, and all taxes and utility liens, special assessments and taxes that may be due. Nationstar Mortgage LLC D/B/A Mr. Cooper, its attorneys, and the undersigned Special Master, disclaim all responsibility for, and the purchaser at the sale takes the property "as is," in its present condition, subject to the valuation of the property by the County Assessor as real or personal property, affixture of any mobile or manufactured home to the land, deactivation of title to a mobile or manufactured home on the property, if any, environmental contamination on the property, if any, and zoning violations concerning the property, if any.

NOTICE IS FURTHER GIVEN that the purchaser at such sale shall take title to the above described real property subject to a one (1) month right of redemption.

PROSPECTIVE PURCHASERS AT SALE ARE ADVISED TO MAKE THEIR OWN EXAMINATION OF THE TITLE AND THE CONDITION OF THE PROPERTY AND TO CONSULT THEIR OWN ATTORNEY BEFORE BIDDING.

By: Robert Doyle
c/o Legal Process Network
P.O. Box 51526
Albuquerque, NM 87181

2 NM-18-833842-JUD
IDSPub #0150546

3/1/2019 3/8/2019
3/15/2019 3/22/2019

**STATE OF
NEW MEXICO
COUNTY OF
DOÑA ANA
THIRD JUDICIAL
DISTRICT**

Case No.:
D-307-CV-2018-00053

NATIONSTAR MORT-

GAGE LLC D/B/A CHAMPION MORTGAGE COMPANY, Plaintiff,

vs.

UNKNOWN HEIRS, DEWISES AND LEGATEES OF PAUL DANIEL PROVENCIO, DECEASED; MARIA PROVENCIO; DON PROVENCIO; UNITED STATES OF AMERICA BY AND THROUGH THE SECRETARY OF HOUSING AND URBAN DEVELOPMENT; WILLIAM M. PROVENCIO, Defendants.

NOTICE OF FORECLOSURE SALE

PLEASE TAKE NOTICE that the above-entitled Court, having appointed me or my designee as Special Master in this matter with the power to sell, has ordered me to sell the real property (the "Property") situated in Dona Ana County, New Mexico, commonly known as 1233 Akers Street, Las Cruces, NM 88005, and more particularly described as follows:

LOT NUMBERED 1 IN BLOCK NUMBERED 109 OF COUNTRY CLUB MANOR NO. 3, LAS CRUCES, DOÑA ANA COUNTY, NEW MEXICO, AS THE SAME IS SHOWN AND DESIGNATED ON THE PLAT OF SAID COUNTRY CLUB MANOR NO. 3, FILED IN THE OFFICE OF THE COUNTY CLERK OF DOÑA ANA COUNTY, NEW MEXICO ON FEBRUARY 7, 1966 IN PLAT BOOK 9, FOLIO 87.

Due to a scrivener's error, the legal description in the Mortgage has typographical errors and should be reformed to correct the typographical error so that hereafter the legal description shall appear as follows:

LOT 1, BLOCK 109, COUNTRY CLUB MANOR NO. 3, IN THE CITY OF LAS CRUCES, COUNTY OF DOÑA ANA, STATE OF NEW MEXICO, AS SHOWN AND DESIGNATED ON THE PLAT THEREOF, FILED IN THE OFFICE OF THE COUNTY CLERK OF SAID COUNTY ON FEBRUARY 7, 1966, AS PLAT NO. 658, IN BOOK 9 PAGES 86 AND 87 OF PLAT RECORDS.

LEGAL NOTICES

Las Cruces Bulletin - your legal publication for
Las Cruces and Doña Ana County, New Mexico

By: Robert Doyle
c/o Legal Process Network
P.O. Box 51526
Albuquerque, NM 87181

2 NM-17-803352-JUD
IDSPub #0150334

2/22/2019 3/1/2019
3/8/2019 3/15/2019

**STATE OF
NEW MEXICO
COUNTY OF
DOÑA ANA
THIRD JUDICIAL
DISTRICT COURT**

No. D-307-CV-2019-00236
Judge: Beyer, Marci

**LUPITA URIETA,
Plaintiff,**

vs.

**ROSITA BORUNDA
RAMIREZ, and any and
all unknown persons who
may claim a lien, interest
or title adverse to the
Plaintiff,
Defendant.**

**NOTICE OF PENDENCY
OF SUIT**

THE STATE OF NEW
MEXICO TO: ROSITA
BORUNDA RAMIREZ, and
any and all unknown persons
who may claim any lien,
interest or title adverse to the
Plaintiff

I, David S. Borunda, Court
Administrator of the Third
Judicial District Court in the
County of Doña Ana, State
of New Mexico, do hereby
cause to be issued this
Notice of Pendency of Suit,
for the purpose of service of
process on any and all
unknown persons who may
claim any lien, interest or
title adverse to the Plaintiff
by publication.

The names of the Plaintiff,
Defendants, and the Court in
which said cause is pending
and the civil cause number
are set out hereinabove.

The Defendants against
whom service by publication
is sought to be obtained are
ROSITA BORUNDA RAM-
IREZ, and any and all
unknown persons who may
claim any lien, interest or
title adverse to the Plaintiff.
The general object of this
action is to quiet and to set
at rest the title of Plaintiff in
and to the lands described
herein against any adverse
claims of the Defendants and
that the Defendants be
barred and estopped from

having or claiming any lien
upon, any right or title to the
estate of Plaintiff in and to
said lands, or any portion
thereof, adverse to the
Plaintiff.

The property which is affected
and concerned by this
pending action is located at
1096 West Wilson Avenue,
Las Cruces, Doña Ana
County, New Mexico 88005,
and more particularly described
as follows, to wit:

A tract of land situate within
the corporate limits of the
City of Las Cruces, Doña
Ana County, New Mexico as
part of Lot 17 of the Howell
Subdivision, as filed June
18, 1956 in Plat Records 7
Page 69, of the Doña Ana
County Records and being
more particularly described
as follows:

Located in the Doña Ana
Bend Colony Grant, in the
S1/2 of Section 12, T. 23 S.,
R. 1 E., NMPM, in the City
of Las Cruces, Doña Ana
County, New Mexico, and
being part of U.S.R.S. Serial
9A-115 on the Property
Maps of said U.S. Reclamation
Service and also being a
part of County Plat 354, and
being more particularly described
as follows, to-wit:

Beginning at the southwest
corner of tract to be
described, marked by a stake
on the north line of a Forty
ft. street, formerly known as
Wilson Avenue, and approx-
imately in the same place,
and on the east line of a fifty
ft. street, known as Fourth
Street, whence the SW cor.
Of U.S.R.S. Serial 9A-116,
marked by a 2 in. iron pipe
bears S. 18 deg. 26'40" E.
10.0 ft.; thence S. 75 deg.
09' W. approximately
1165.14 ft., and thence
running from said place of
beginning, N. 18 deg. 26'40"
W. along the east line of
Fourth Street 60.3 ft. to the
northwest corner of this
tract; thence N. 75 deg. 09'
E. 131.28 ft. to the northeast
corner of this tract; thence S.
18 deg. 26'40" E. 60.3 ft. to
the southeast corner of this
tract, a point on the north
line of Wilson Avenue;
thence along the north line
of Wilson Avenue, S. 75
deg. 09' W. 131.28 ft. to the
place of beginning. Bounded
on the north and east by C.
Z. Howell; and on the south
and west by public streets.

(Being the same property
conveyed by warranty deed
dated May 15, 1953 from C.
Z. Howell and Leva Howell,

his wife, to James Edward
Gray and Billie Gray, his
wife, Owners therein, recorded
May 26, 1953, Book
130 of Warranty Deeds,
Page 248, Records of Doña
Ana County, New Mexico.);

Commonly known as 1096
West Wilson Avenue, Las
Cruces, New Mexico 88005.
The name of the Plaintiff's
attorney is as follows: Dana
M. Kyle of The Law Offices
of Dana M. Kyle, P.A., P.O.
Box 2227, Las Cruces, New
Mexico 88004, (575) 525-0020.

ROSITA BORUNDA RAM-
IREZ, and any and all
unknown persons who may
claim any lien, interest or
title adverse to the Plaintiff,
against whom constructive
service is sought to be
obtained, are hereby notified
that unless they file a
responsive pleading or motion
with this Court within
thirty (30) days after the date
of the third and last publica-
tion of this notice, judgment
or other appropriate relief
will be rendered in such suit
against them by default.

WITNESS MY HAND
AND SEAL this 11th day of
February, 2019.

Court Administrator
By /s/
Deputy

Dates: 02/15, 02/22, 03/01,
2019

**STATE OF
NEW MEXICO
COUNTY OF DOÑA ANA
THIRD JUDICIAL
DISTRICT COURT**

NO. CV-2019-261
JAMES T. MARTIN

**IN THE MATTER OF
THE PETITION OF
TERRELL JAMES
RUSHMORE
FOR CHANGE OF
NAME**

**NOTICE OF PETITION
TO CHANGE NAME**

**NOTICE IS HEREBY
GIVEN** that Terrell James
Rushmore, a resident of the
City of Las Cruces, County
of Doña Ana, New Mexico,
and over the age of fourteen
years, has filed a Petition to
Change Name in the Third
District Court, Doña Ana
County, New Mexico, where
in he seeks to change his
name from Terrell James
Rushmore to Toby Norman
Randall, and that this Peti-
tion will be heard before the
Honorable James T. Martin,

District Judge, on the 14th
day of March, 2019, at the
hour of 4:30 p.m., at the
Doña Ana County Court-
house, 201 W. Picacho, Ave.
Las Cruces, NM 88005

Respectfully submitted,
/s/ Terrell James Rushmore
Terrell James Rushmore
3260 Venus St. #52
Las Cruces, NM 88012
575-201-9522

Dates: 02/22, 03/01, 2019

**STATE OF
NEW MEXICO
COUNTY OF DOÑA ANA
THIRD JUDICIAL
DISTRICT COURT**

No. D-307-DM-2017-00936
Judge Grace B. Duran

**LUIS CORTEZ,
Petitioner,**

v.

**JESSICA ANNE IN-
GRAM, Respondent.**

**NOTICE OF PENDENCY
OF MOTION**

To RESPONDENT JESSICA ANNE INGRAM

You are hereby notified that
Petitioner, Luis Cortez, has
filed a Motion for Sole
Legal and Physical Custody
of the parties' minor child,
and that unless you file a
response to the Motion in
said cause on or before thirty
(30) days from the last date
of publication, a judgment
by default may be entered
against you.

Petitioner's Attorney:
Kenneth L. Beal, P.C.
P.O. Box 725
Las Cruces, NM 88004
575-526-5511

Dates: 02/22, 03/01, 03/08,
2019

**STATE OF
NEW MEXICO
COUNTY OF DOÑA ANA
THIRD JUDICIAL
DISTRICT COURT**

NO. D-307-CV-2018-00397

**BOKF, N.A.,
Plaintiff,**

v.

**PAUL GASSE, CHERYL
GASSE, BENEFICIAL
NEW MEXICO, INC.,
AND MIDLAND CREDIT
MANAGEMENT, INC.,
Defendants.**

NOTICE OF SALE

**NOTICE IS HEREBY
GIVEN** that the undersigned
Special Master will on
March 26, 2019 at 11:45 am,
outside the main entrance of
the 3rd Judicial District
Courthouse, 201 W. Pica-
cho, Las Cruces, NM, sell
and convey to the highest
bidder for cash all the right,
title, and interest of the
above-named defendants in
and to the following descri-
bed real estate located in
said County and State:

LOT 85 IN BLOCK 24 OF
LAS COLINAS PLANNED
UNIT DEVELOPMENT,
PHASE VI-B, LOCATED
IN THE CITY OF LAS
CRUCES, DOÑA ANA
COUNTY, NEW MEXICO,
AS THE SAME IS SHOWN
AND DESIGNATED ON
THE PLAT THEREOF
FILED FOR RECORD IN
THE OFFICE OF THE
COUNTY CLERK OF
DOÑA ANA COUNTY,
NEW MEXICO ON
MARCH 14, 2000 AND
RECORDED IN BOOK 19
AT PAGES 393-395, PLAT
RECORDS.

The address of the real
property is 5048 Galina
Drive, Las Cruces, NM
88012. Plaintiff does not
represent or warrant that the
stated street address is the
street address of the descri-
bed property; if the street
address does not match the
legal description, then the
property being sold herein is
the property more particu-
larly described above, not the
property located at the street
address; any prospective
purchaser at the sale is given
notice that it should verify
the location and address of
the property being sold. Said
sale will be made pursuant
to the judgment entered on
November 14, 2018 in the
above entitled and numbered
cause, which was a suit to
foreclose a mortgage held by
the above Plaintiff and
wherein Plaintiff was ad-
judged to have a lien against
the above-described real es-
tate in the sum of
\$114,637.85 plus interest
from July 1, 2018 to the date
of sale at the rate of 3.625%
per annum, the costs of sale,
including the Special Mas-
ter's fee, publication costs,
and Plaintiff's costs expen-
ded for taxes, insurance, and
keeping the property in good
repair. Plaintiff has the right
to bid at such sale and
submit its bid verbally or in
writing. The Plaintiff may
apply all or any part of its
judgment to the purchase
price in lieu of cash.

At the date and time stated
above, the Special Master
may postpone the sale to
such later date and time as
the Special Master may
specify.

**NOTICE IS FURTHER
GIVEN** that this sale may
be subject to a bankruptcy
filing, a payoff, a reinstatement
or any other condition
that would cause the cancel-
lation of this sale. Further, if
any of these conditions exist,
at the time of sale, this sale
will be null and void, the
successful bidder's funds
shall be returned, and the
Special Master and the
mortgagee giving this notice
shall not be liable to the
successful bidder for any
damages.

**NOTICE IS FURTHER
GIVEN** that the real prop-
erty and improvements con-
cerned with herein will be
sold subject to any and all
patent reservations, ease-
ments, all recorded and
unrecorded liens not fore-
closed herein, and all record-
ed and unrecorded special
assessments and taxes that
may be due. Plaintiff and its
attorneys disclaim all re-
sponsibility for, and the
purchaser at the sale takes
the property subject to, the
valuation of the property by
the County Assessor as real
or personal property, affix-
ture of any mobile or
manufactured home to the
land, deactivation of title to
a mobile or manufactured
home on the property, if any,
environmental contamina-
tion on the property, if any,
and zoning violations con-
cerning the property, if any.

**NOTICE IS FURTHER
GIVEN** that the purchaser at
such sale shall take title to
the above-described real
property subject to rights of
redemption.

Margaret Lake
Special Master
Pro Legal Services, LLC
201 Eubank Blvd. NE, Suite
A1
Albuquerque, NM 87123
(505)715-3711

Date: 03/01, 03/08, 03/15,
03/22, 2019

**STATE OF NEW MEXI-
CO
COUNTY OF DOÑA ANA
THIRD JUDICIAL DIS-
TRICT**

CAUSE NO.
D-307-PB-2019-00016
JUDGE: MANUEL I. AR-
RIETA

**IN THE MATTER OF
THE ESTATE
BRUCE W. HUNSICKER,
DECEASED.**

**NOTICE TO CRED-
ITORS**

**NOTICE IS HEREBY
GIVEN** that Heather Huns-
sicker and Samantha Hyde
have been appointed co-
personal representatives of
this estate. All persons
having claims against the
estate are required to present
their claims within four
months after the date of the
first publication of this
notice or the claims will be
forever barred. Claims must
be presented either to the
undersigned co-personal rep-
resentative at the address
shown in this notice or filed
within the court.

The attorney for the personal
representative is William L.
Lutz of the law firm of
Martin & Lutz, P.C., 2110
North Main Street, Las
Cruces, New Mexico,
88001.

DATED this 11 day of Feb,
2019.

/s/ Heather Hunsicker
Heather Hunsicker
c/o William L. Lutz
P.O. Drawer 1837
Las Cruces, NM 88004

/s/ Samantha Hyde
Samantha Hyde
c/o William L. Lutz
P.O. Drawer 1837
Las Cruces, NM 88004

Dates: 02/15, 02/22, 03/01,
2019

**STATE OF NEW MEXI-
CO
COUNTY OF
DOÑA ANA
THIRD JUDICIAL
DISTRICT COURT**

No. D-307-PB-2019-00024
Judge: Martin, James T.

**IN THE MATTER OF
THE ESTATE
OF SURRY AUSTIN, DE-
CEASED.**

**NOTICE TO CRED-
ITORS**

**NOTICE IS HEREBY
GIVEN** that the undersigned
has been appointed personal
representative of this estate.
All persons having claims
against this estate are re-
quired to present their claims
within four (4) months after
the date of the first publica-
tion of this notice, or the

LEGAL NOTICES

Las Cruces Bulletin - your legal publication for
Las Cruces and Doña Ana County, New Mexico

claims will be forever barred. Claims must be presented either to the undersigned personal representative at the address listed below, or filed with the District Court of Doña Ana, County, New Mexico, located at the following address: 201 W. Picacho Ave, Las Cruces, NM 88005.

Dated: February 15, 2019

/s/ Leon Len Austin
Leon Len Austin
6355 Topanga Canyon Blvd,
Suite 517
Woodland Hills, CA 91367
760-470-3432

SUBMITTED:

ESTRADA LAW, P.C.

By /s/ Michele Ungvarsky,
Esq.

Michele Ungvarsky, Esq.
1340 Picacho Hills Drive
Las Cruces, NM 88007
575.556.2462
Attorneys for The Estate of
Surry Austin, deceased.

Dates: 03/01, 03/08, 03/15,
2019

STATE OF NEW MEXICO DOÑA ANA COUNTY THIRD JUDICIAL DISTRICT COURT

No. D-307-PB-2018-00126
Judge Manuel I. Arrieta

**IN THE MATTER OF
THE ESTATE OF
RUBEN MARQUEZ, DE-
CEASED.**

**NOTICE TO CRED-
ITORS**

**NOTICE IS HEREBY
GIVEN** that the undersigned
has been appointed personal
representative of the estate
of the decedent. All persons
having claims against the
estate of the decedent are
required to present their
claims within four (4)
months after the date of the
first publication of any
published notice to creditors
or sixty (60) days after the
date of mailing or other
delivery of this notice,
whichever is later, or the
claims will be forever barred.
Claims must be presented
either to the undersigned
personal representative at the
address listed below, or
filed with the Third Judicial
District Court of Doña Ana
County, New Mexico, located
at the following address:
201 W. Picacho Avenue, Las
Cruces, New Mexico 88005.

Dated: January 31, 2019

MARIA L. MARQUEZ
201 Madero Street
Anthony, NM 88021

Prepared by:
ALAN D. GLUTH
New Mexico Bar #14980
Gluth Law, LLC
2455 East Missouri, Suite A
Las Cruces, New Mexico
88001 Telephone: (575)
556-8449
Facsimile: (575) 556-8446

Dates: 02/22, 03/01, 03/08,
2019

STATE OF NEW MEXICO IN THE PROBATE COURT DOÑA ANA COUNTY

No. 19-0022

**IN THE MATTER OF
THE ESTATE OF
OLLIE C. COOPER, AKA
OLLIE COOPER,
DECEASED**

**NOTICE TO CRED-
ITORS**

**NOTICE IS HEREBY
GIVEN** that, **LORETTA
SHARP**, has been appointed
Personal Representative of
the estate of **OLLIE C.
COOPER, AKA OLLIE
COOPER**. All persons hav-
ing claims against this estate
are required to present their
claims within four (4)
months after the date of the
first publication of this
Notice, or the claims will be
forever barred. Claims must
be presented either to the
Personal Representative, c/o
J. David Beasley, Esq., P.O.
Box 1620, Las Cruces, NM
88004, or filed with the
Probate Court of Dona Ana
County, New Mexico, located
at 845 N. Motel Blvd.,
Las Cruces, NM 88007,
(575) 525-6132.

Dated: February 14, 2019.

Submitted by:
/s/ J. David Beasley, Esq.
J. DAVID BEASLEY, Esq.
Beasley Legal, P.C.
Attorney for the Estate of
Ollie C. Cooper,
Aka Ollie Cooper
P.O. Box 1620
Las Cruces NM 88004
575-528-6782

Dates: 02/22, 03/01, 03/08,
2019

STATE OF NEW MEXI- CO THE PROBATE COURT DOÑA ANA COUNTY

NO. 19-0020

**IN THE MATTER OF
THE ESTATE OF
GISELA BAHLO,
DECEASED**

**NOTICE IS HEREBY
GIVEN** that the undersigned
has been appointed personal
representative of this estate.
All persons having claims
against this estate are re-
quired to present their claims
within four months after the
date of the first publication
of any published notice to
creditors or sixty (60) days
after the date of mailing or
delivery of this notice,
whichever is later, or the
claims will be forever barred.
Claims must be presented
either to the undersigned
personal representative at the
address listed below, or
filed with the Probate Court
of Doña Ana County, New
Mexico, 845 N. Motel Blvd.,
Room 1-200, Las Cruces,
New Mexico 88007.

Dated: 02/13/2019

/s/ Refugio H. Rodriguez
Refugio H. Rodriguez
175 N Roberts Dr.
Las Cruces, NM 88005
575-642-1281

Dates: 03/01, 03/08, 03/15,
2019

STATE OF NEW MEXI- CO THE PROBATE COURT DOÑA ANA COUNTY

NO. 19-0025

**IN THE MATTER OF
THE ESTATE OF
Hazel Arlene McDowell,
aka Hazel Arlene Ross
DECEASED**

**NOTICE TO CRED-
ITORS**

**NOTICE IS HEREBY
GIVEN** that the undersigned
has been appointed personal
representative of the deced-
ent. All persons having
claims against this estate are
required to present their
claims within four months
after the date of the first
publication of this Notice or
the claims will be forever
barred. Claims must be
presented either to the
undersigned personal repre-
sentative at the address listed
below, or filed with the

Probate Court of Doña Ana
County, New Mexico, 845
N. Motel Blvd., Room
1-200, Las Cruces, New
Mexico 88007.

Dated: 2-7, 2019

/s/ Gloria Otero
Gloria Otero
2400 Jordan Rd. #A, PO
Box 2702
Las Cruces, NM 88001, Las
Cruces, NM 88004

Dates: 02/15, 02/22, 03/01,
2019

STATE OF NEW MEXICO THIRD JUDICIAL DISTRICT COURT DOÑA ANA COUNTY

No. D-307-PB-2019-00012
Judge James T. Martin

**IN THE MATTER OF
THE ESTATE OF
MARY N. SPENCE, a/k/a
MARY NORIEGA
SPENCE, DECEASED.**

**NOTICE TO CRED-
ITORS**

**NOTICE IS HEREBY
GIVEN** that the undersigned
has been appointed personal
representative of the estate
of the decedent. All persons
having claims against the
estate of the decedent are
required to present their
claims within four (4)
months after the date of the
first publication of any
published notice to creditors
or sixty (60) days after the
date of mailing or other
delivery of this notice,
whichever is later, or the
claims will be forever barred.
Claims must be presented
either to the undersigned
personal representative at
the address listed below, or
filed with the Third Judicial
District Court of Doña Ana
County, New Mexico, located
at the following
address: 201 W. Picacho
Avenue, Las Cruces, New
Mexico 88005.

Dated: February 8, 2019.

JOHN S. SPENCE
4009 Firethorn Court
Las Cruces, NM 88011

Prepared by:
ALAN D. GLUTH

New Mexico Bar #14980
Gluth Law, LLC
2455 East Missouri, Suite A
Las Cruces, New Mexico
88001
Telephone: (575) 556-8449
Facsimile: (575) 556-8446

Dates: 03/01, 03/08, 03/15,
2019

THIRD JUDICIAL DISTRICT COUNTY OF DOÑA ANA STATE OF NEW MEXICO

No. D-307-PB-2018-00113
Judge James T. Martin

**IN THE MATTER OF
THE ESTATE
OF TERRY D. SNOW,
DECEASED**

**NOTICE TO CRED-
ITORS**

**NOTICE IS HEREBY
GIVEN** that the undersigned
has been appointed personal
representative of the estate
of the decedent. All persons
having claims against the
estate of the decedent are
required to present their
claims within four (4)
months after the date of the
first publication of any
published notice to creditors
or sixty (60) days after the
date of mailing or other
delivery of this notice,
whichever is later, or the
claims will be forever barred.
Claims must be presented
either to the undersigned
personal representative at
the address listed below, or
filed with the Third Judicial
District Court in Dofia Ana
County, New Mexico, located
at the following address:
201 W Picacho Avenue, Las
Cruces, New Mexico 88005.

Dated: February 5, 2019

LORELEI ANN HACKETT
26655 FR 1000
Washburn, MO 65772
Telephone: (417) 826-5917

Dates: 02/22, 03/01, 03/08,
2019

OBITUARIES



Laurie Ann Ludeman

Laurie Ann Ludeman
passed peacefully from
this life on February 13,
2019 under the gentle care
of Mesilla Valley Hospice
and surrounded by family
these last three months.
Laurie was born Janu-
ary 14, 1963 in Rapid City,
South Dakota, and grew
up in South Dakota, Ari-
zona and Las Cruces.

She excelled at com-
petitive swimming in high
school, spent her junior
year in Australia, before
skipping senior year to
study computer science at
NMSU. In San Diego she
was a lifeguard and be-

came a lifelong San Diego
Chargers fan. Returning
to Las Cruces, Laurie was
mother to four sons.

She loved singing and
signing Country music to
her hard of hearing son
Rob. She was a Master
Gardener and took great
pride in her backyard
garden.

Other interests included
watching sports, off-road
driving in the desert,
camping, collecting and
polishing rocks, crafts,
collecting coins, making
chile rellenos, and a big
pot of tamales at Christ-
mas.

She is survived by her
mother Martha Ludeman
(Gordon Butler), father
Lonnie Ludeman (Julie
Schmitt), sister Miranda
Ludeman, sons Kris
Keith, Rob Keith (Martha
Easton), Clinton Rogers,
Craig Rogers, 5 grandchil-
dren, and her dog Bowser
who visited regularly in
hospice.

Family and friends plan
to gather to share memo-
ries on March 2nd.

THE LAS CRUCES
Bulletin

**No login.
No fees.
Free archives!**



**Check out the
entirety of the
Las Cruces Bulletin,
it's archives and
annual publications
online at**

www.lascrucesbulletin.com

Celebrating 25 years

The Mesilla Valley Fine Arts Gallery, 2470 Calle de Guadalupe in Mesilla, celebrated its 25th anniversary Feb. 16 with an open house.



BULLETIN PHOTOS BY STEVE MACINTYRE

Local artist Frank Rimbach stands next to his acrylic collages and featured paintings.



From left, gallery coordinators Meredith Loring, Roberta Widner, Bonnie Quarrie, Jane Madrid, Naida Zucker and Kerry O'Neill.



The gallery attracted customers scouring for art.



The Mesilla Valley Fine Arts Gallery is in the plaza area of Old Mesilla.



Frank Rimbach, "untitled"

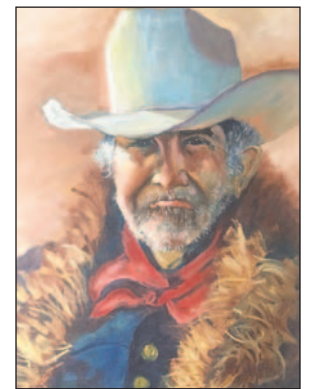
Fine arts gallery welcomes March

BULLETIN REPORT

The Mesilla Valley Fine Arts Gallery, 2470-A Calle de Guadalupe in Mesilla, features two local artists for the month of March – Nanci Bissell and Frank Rimbach.

Bissell graduated from Texas A&M University with degrees in education and a minor in art studies. She has been an educator, teacher, principal and assistant principal in the elementary schools, retiring after a 26-year career. Her artistic interests include seascapes, portraits and landscapes.

Rimbach holds a fine arts degree from New Mexico State University. He has studied exten-



Nanci Bissell, "untitled"

sively both old and modern masters in Europe and the United States. He works primarily in landscapes, bookcase series and modern abstracts.

Gallery hours are 10 a.m.-5 p.m. daily. For more information, call 575-522-2933 or visit mesillavalleyfinearts.com.

CALL TO ARTISTS

12th annual Artists Studio Tour, planned for April 27-28 and May 4-5 in El Paso, seeks artists. The tour is sponsored by Hal Marcus Gallery and The El Paso Scene. Entry deadline is March 5. Information and entry forms are available at www.pleinairpainter-sofelpaso.com, or email info@halmarcus.com.

Branigan Cultural Center, 501 N. Main St., seeks proposals for exhibits with themes of cultural and historical significance relating to the Southwest to be presented in 2020. The center is accepting submissions from artists (solo and group), from formal and informal scholars, and cultural heritage organizations. Proposals accepted through April 7. To apply, complete the form at www.surveymonkey.com/r/LCMS2020. Applications must include a brief (one to four paragraphs) narrative and should include artist statement or group's mission; 8 to 10 jpg images of proposed work (or those of similar style and quality); and linear and/or square footage needs. Exhibits will run for a six-to-12-week period. Incomplete or late proposals will not be accepted. Info: las-cruces.org/museums, 575-541-2154. Gallery hours are 10 a.m.-4:30 p.m. Tuesday-Friday and 9 a.m.-4:30 p.m. Saturday.

Desert Exposure, a monthly published by the Las Cruces Bulletin, seeks turtle art for the May edition in recognition of May 23 as World Turtle Day. The artwork should be vertical, and the image should be be-

tween 2MB and 10MB. It can be any kind of medium: photo, watercolor, fiber, sculpture, oil, mixed media, etc. Deadline for submissions is April 5 to editor@desert-exposure.com.

Greenspace, 517 N. Mesquite, seeks musicians for a planned open mic series and house concerts. Musicians should contact Steve Klinger, 575 496-5571, sck01ster@gmail.com. Greenspace is open 2-4 p.m. Tuesday and Thursday and 1-5 p.m. Wednesday, Friday and Saturday, and by appointment. Info: 575 551-6778, greenspacegallerylc@gmail.com.

Project in Motion, the modern and aerial dance company, holds auditions for their 20th year from 5-6 p.m. Sunday, March 3, at their studio, 430 N. Compress Road. Dancers, athletes, climbers, creators and gymnasts are encouraged to audition. Auditions will include a short class and improvisation.

You can also request a different audition time by emailing pimdance@gmail.com or calling 575-208-4413. Visit projectinmotion.com.

Rokoko Art Gallery, 1785 Avenida de Mercado, seeks submissions for its "Fantasy Free for All" exhibit to run from May 11-June 22. Submissions due by May 4. Entry fee: \$15. Info: 575-522-5553, rokoko@rokokoart.com.

Tombaugh Gallery calls for regional artists for a 200-mile radius of Las Cruces to submit proposals for exhibitions for the 2020 calendar

year. Non-traditional media or subject matter is welcome. All artwork must be for sale. Submissions should contain information about the artist, type of work to be shown and USB flash drive containing eight representative jpg. images. For group shows, supply a list of all members and one or two images from each member. If a show theme is being considered, please explain the theme fully. Submissions should be

postmarked no later than April 15. Applicants will be notified by May 15, including those not selected. Artists who want their media returned must send a SASE. Artists preferring to send an electronic submission may contact Judy Licht at jelicht@gmail.com for instructions. Address submissions to Judy Licht, Committee Chairperson, Unitarian Universalist Church of Las Cruces, 2000 S. Solano, Las Cruces, NM 88001.

20 Years OF COWBOY DAYS March 2nd ~ 3rd

Saturday, 9am to 5pm
Sunday, 10am to 4pm

\$5 per person
5 years old and up

- Chuck wagon cooking • Cowboy music
- Mounted shooting • Stagecoach rides
- Horseshoeing demo • Sheep to Shawl (Saturday only)
- Gunfight re-enactments at noon
- Theater performances
- Children's crafts & games
- Food & craft vendors • Plant Sale
- 3rd Annual CASI Chili Cook-Off
- Mechanical bull, mini-train & pony rides*

* Pony rides \$5, train and bull rides \$3.

NEW MEXICO
FARM & RANCH
HERITAGE
MUSEUM

575-522-4100 • 4100 Dripping Springs Road
www.nmfarmandranchmuseum.org



UPCOMING EVENTS

FRI MARCH 1 • 10:30 A.M. **BRANIGAN LIBRARY**
Rhythm Roundup - Music and Motion for ages 2-5*

FRI MARCH 1 • 3:30 P.M. **BRANIGAN LIBRARY**
Library Lab - Activities, Games and Stories for 6-10**

SAT MARCH 2 • NOON **BRANIGAN LIBRARY**
Therapaws Reading Teams - Kids read to dogs who love to listen!*

SAT MARCH 2 • NOON **RIO GRANDE THEATRE**
Lemony Snicket's A Series of Unfortunate Events - FREE

MON MARCH 4 • 11:00 A.M. **BRANIGAN LIBRARY**
Tai Chi Chuan

TUE MARCH 5 • 10:30 A.M. **BRANIGAN LIBRARY**
Read to Me - Story time for ages 3 and up*

TUE+THU MARCH 5+7 • 4:00 P.M. **BRANIGAN LIBRARY**
Teen Game Night

WED+THU MARCH 6+7 • 10:00 A.M. **BRANIGAN LIBRARY**
Toddler Time - Stories and Activities for ages 1-3 with caregivers*

WED MARCH 6 • 11:00 A.M. **BRANIGAN LIBRARY**
Mother Goose Time - Activities for Infants*

WED MARCH 6 • 2:00 P.M. **BRANIGAN LIBRARY**
First Wednesday Happening - Carsbad Caverns Nat'l. Park Rangers' Bat Program

WED MARCH 6 • 7:00 P.M. **RIO GRANDE THEATRE**
Climate Change Seminar Series - FREE

FRI MARCH 8 • 7:00 P.M. **RIO GRANDE THEATRE**
The Hobbit - The Children's Theatre - \$8

SAT MARCH 9 • 1:00 P.M. **RIO GRANDE THEATRE**
The Hobbit - The Children's Theatre - \$8

FRI MARCH 15 • 7:00 P.M. **RIO GRANDE THEATRE**
The Hobbit - The Children's Theatre - \$8

ONGOING EVENTS:

- Downtown Art RAMBLE - 1st Friday of the Month 5-7pm
- Las Cruces Farmers & Crafts Market - Wed. and Sat. Morn.

SPONSORED
BY:



*Children must be accompanied by their well-behaved adult caregivers.
**Well-behaved adult caregivers welcome.

Tombaugh Gallery: dark enough to see the constellations



Victor Gibbs, "Three Rivers Earthly and Celestial"

BULLETIN REPORT

The Tombaugh Gallery presents the work of photographers Victor Gibbs and Bob Peticolas, in the exhibit "Into the Night" from March 3-April 13.

An artist reception will be held from 11:30 a.m.-1 p.m. Sunday, March 3, at the gallery, 2000 S. Solano in the Unitarian Universalist Church. A second opening is scheduled for 5-7 p.m. Friday, March 29.

Both photographers are featuring night images of the Southwest.

Growing up in Los Alamos, Gibbs spent a lot of time gazing at the night sky, marveling at the celestial beauty "blissfully unaware of the light pollution that plagues much of the country," he says.

"In that darkness



Bob Peticolas, "Petroglyph Panel"

there is a life-affirming beauty."

As an astro-photographer, Gibbs brings the ancient starlight to his camera sensor, so that others can venture into the darkened countryside to see the constellations. At NMSU he studied art, psychology and anthropology. Pursuing digital photography, he focused on cultural landscapes, often shooting in remote locations as part of his primary job as an archaeologist. He also started a photography business, Adventure Photography. In 2018 he was awarded first place in the New

Mexico Magazine photo contest in the landscape category.

Peticolas grew up in El Paso and had an interest in fine arts from an early age. His interests include literature, poetry and music, his major in college. After spending most of his career on the East Coast, the desert drew him and his wife back to the Southwest and they settled in Las Cruces in 2011, where he began to pursue landscape photography, studying with Wayne Suggs.

Peticolas views art as "a means of transforming and enriching our experi-

ence of nature and life."

In his photography, he says he is "not seeking to merely document a scene, but to evoke a material metaphor of thoughts and feelings in the viewer."

Some evocative photographs happen in an instant, Peticolas says, and others take months of planning, with no certainty in the process.

"It is always changing and ever-evolving, and part of the sheer magic that is life."

Tombaugh Gallery is open 10 a.m.-2 p.m. Wednesday-Saturday.



QUEEN OF DIAMONDS
© HAL MARCUS 2010

9TH ANNUAL
LAS CRUCES
ARTS
FAIR

March 1-3, 2019
LAS CRUCES CONVENTION CENTER

- FEATURED ARTIST, HAL MARCUS
- ORIGINAL WORK BY OVER 100 REGIONAL ARTISTS
- QUICK ART COMPETITION
- LIVE ENTERTAINMENT • SILENT AUCTION

TICKETS \$10 per adult, kids 12 and under are **FREE!**

SAVE 25%

ADVANCE TICKETS
\$15/TWO ADULTS, Available at Cutter Gallery,
2640 El Paseo Rd, Frame & Art Center,
1100 S Main St or online at DAArts.org.

DOÑA ANA
Arts
COUNCIL
DAARTS.ORG | 575-523-6403

MOONBOW
ALTERATIONS • GIFT SHOP
We can make your clothes fit
NFL Items & Books by Local Authors!
225 E. Idaho #32 in La Mission Plaza

Hours: Tues., Thurs., Fri. - 10AM - 6PM
Closed Wed. | Saturday: 10AM - 2PM
Phone Number: 527-1411



Victor Gibbs, "Yucca Milky Way"

A&E EVENTS

Las Cruces Arts Association: First Friday Art Ramble, 5-7 p.m. March 1, Nopalito's Galleria, 310 S. Mesquite St. Membership meeting, 1:30-3:30 p.m. Sunday, March 17, Nopalito's.

NM Vintage Wines: Live music, 2461 Calle de Principal. Info: 575-523-9463, nmvintagewines.com.
 • 8-10 p.m. March 1: Chris Baker, country
 • 8-10 p.m. March 2: Ricky Luna & Emily, sweet harmonies
 • 3-5 p.m. March 3: Alison Reynolds, folk and pop on cello and guitar

'Music Beyond Borders': The NMSU Philharmonic and the Orquesta Sinfónica Esperanza Azteca Cd Juárez merge to "highlight the importance of seeing life and music beyond any border and encourage artistic exchange in our region," 6 p.m. Friday March 1, Atkinson Recital Hall, NMSU.

Las Cruces Arts Fair: Ninth annual, Friday-Sunday, March 1-3, Las Cruces Convention Center, 680 E. University Ave. More than 100 artists represented in all mediums, plus flamenco guitarist Jake Mossman and Quick Art Competition. Hours 5-8 p.m. Friday, 10 a.m.-5 p.m. Saturday, 10 a.m.-4 p.m. Sunday. Info: 575-523-6403.

Little Toad Creek Brewery & Distillery: Live music, 119 N. Main St.
 • 8 p.m. Friday, March 1: Moody Little Sister
 • 8 p.m. Saturday, March 2: Chris Baker
 • Noon Sunday, March 3: Sean Costanza/Coffee

House Series
 • 7 p.m. Monday, March 4: Willie Green Project, modern jazz
 • March 5: Cold Cash Band/Mardi Gras Party

High Desert Brewing Company: Live music, 8 p.m. Thursdays and Saturdays, 1201 W. Hadley Ave. Info: 575-525-6752.
 • March 2: Clark Andrew Libby, rock/American
 • March 7: Jamie O'Hara, pop/blues

Ron Campbell: Animator of the Beatles film "Yellow Submarine" showcases his original Beatles cartoon paintings at Art Obscura, 3206 Harrelson St., 4-8 p.m. Tuesday-Wednesday, March 5-6. Info: 575-494-7256, www.artobscuragallery.com.

Doña Ana Photography Club: Meets every other Tuesday at the Southwest Environmental Center,

275 N. Main St. Free and open to the public. Info: daphotoclub.org.
 • 7 p.m. March 5: "A Simple Recipe for Photo Editing," plus mirrorless cameras and photography in New Mexico.

Lisa Lynne & Aryeh Frankfurter: Celtic harpists performing on rare instruments and telling stories, 7 p.m. Wednesday, March 6, Unitarian Universalist Church of Las Cruces, 2000 S. Solano Drive.

Southern New Mexico Music and Dance: Sponsors a contra dance 7:30-10:30 p.m. Friday, March 15, Mesilla Community Center, 2251 Calle de Santiago. With Silver City's Big Ditch Crickets and Lonnie Ludeman calling. Wear Green. Cost \$6, youth \$4, family \$15. Info: www.snmmds.org or 575-522-1691.

NM STATE UNIVERSITY
THEATRE ARTS

Show Dates & Times

2/21 5:30pm
 2/22 & 2/23 7:30pm
 3/1 7:30pm
 3/2 2pm & 7:30pm
 3/3 2pm

Directed by
Claudia Billings

Tickets:
 575-646-1420

Silent Sky

ASNMSU
 Center for the Arts
 1000 E. University Ave.

RIO GRANDE THEATRE

UPCOMING EVENTS

THURSDAY, FEBRUARY 28
ILYA YAKUSHEV
 LAS CRUCES CIVIC CONCERT
 DOORS at 6:30pm
 CONCERT at 7:30pm
 TICKETS: \$25

SATURDAY, MARCH 2
LEMONY SNICKET'S
 A SERIES OF UNFORTUNATE EVENTS
 DOORS at 11am, MOVIE at NOON
 ADMISSION IS FREE
 BROUGHT TO YOU BY THE CITY OF LAS CRUCES MUSEUMS

WEDNESDAY, MARCH 6
NMSU CLIMATE CHANGE SERIES:
 DROUGHT, WATER SECURITY,
 & ECOSYSTEM DISRUPTION
 DOORS at 6pm, LECTURE at 7pm
 ADMISSION IS FREE

A Children's Theatre
The Hobbit
 of the Mesilla Valley

MARCH 8-9, 15-16
THE HOBBIT
 8 & 15 - DOORS at 6pm, PLAY at 7pm
 9 & 16 - DOORS at NOON, PLAY at 1pm
 TICKETS: \$8

TICKETS AVAILABLE AT BOX OFFICE OR RioGrandeTheatre.com

CONCESSIONS AVAILABLE INCLUDING SNACKS, REFRESHMENTS, BEER, WINE & SPIRITS

RioGrandeTheatre.com 211 N. Main Street | Information (575) 541-2290

SPONSORS: **Bulletin** **BravoM** **City of Las Cruces** **DownPlace** **Fairfield**

'Silent Sky': contemplating the wonders of the universe

By **MIKE COOK**
Las Cruces Bulletin

REVIEW

New Mexico State University Theatre Arts Department's production of "Silent Sky" has five onstage stars, at least five backstage stars and rates five stars.

Director Claudia Billings, costume designer Juneice Robinson, sound designer Daniel Miller, set and lighting designer Jim Billings and stage manager Mike Wise and an outstanding cast create a show that leaves you contemplating the wonders of the universe and the mysteries of the human heart.

There is a sweetness flowing through the production that made me think of that extra note that doesn't exist sepa-

rately but can be heard when a choir that is perfectly tuned.

Three of the play's characters are based on real people, including Henrietta Leavitt (a strong and graceful performance by Jaidan Jaramillo), who discovered how to measure the universe while working as a "computer" in the Harvard University observatory in the early 20th century. Leavitt showed that the universe is expanding, and she opened doors for women in astronomy and the sciences.

Jim Billings' stunning set and lighting design will take your breath away. Robinson's costumes reflected that



BULLETIN PHOTO BY MIKE COOK

Some members of the cast and crew of the NMSU Theatre Arts Department's production of "Silent Sky" are, left to right, sound designer Daniel Miller, costume designer Juneice Robinson, cast member Jenna Ivey, director Claudia Billings, set and lighting designer Jim Billings, and cast members E. Gallegos, Jaidan Jaramillo, Molly Schafer and Isaac Lucero.

cosmic theme brilliantly; I especially loved Jaramillo's stellar (and interstellar) shawl in the final scene. Jenna Ivey's a cappella renditions of

Miller's original music made for beautiful transitions.

As you would hope in a play about scientists, there is wonderful on-

stage chemistry here. The scenes between Jaramillo's Leavitt and Isaac Lucero's Peter Shaw are captivating. Like the Sun and Earth in different seasons, they are close and warm, then distant and cold. Jaramillo had the same strong but light-hearted interplay with Leavitt's imaginary sister, Margaret (Ivey), and with her real-life lab partners Annie Cannon (Molly Schafer) and Williamina Fleming (E Gallegos).

All five cast members are NMSU theatre students and their performances credit the department. They Skyped with playwright Lauren Gunderson a couple of weeks ago.

Lucero is the only senior in the cast. From Rif Raff in NMSU's "Rocky

Horror Picture Show" to Tito Morelli in Las Cruces Community Theatre's 2018 production of "Lend Me A Tenor," his is doing outstanding work on Las Cruces stages.

Remaining performances of "Silent Sky" are 7:30 p.m. Friday and Saturday, March 1-2 and matinees at 2 p.m. Saturday and Sunday, March 2-3, at the ASNMSU Center for the Arts, 1000 E. University Ave. A talk-back with cast and crew and NMSU Astronomy Department staff follows the March 2 performance.

For tickets, call 575-646-1420 or visit www.nmsutheatre.com/boxoffice.php.

Mike Cook may be contacted at mike@lascrucesbulletin.com.

DOÑA ANA
Arts
COUNCIL

See you at the fair!

LAS CRUCES
ARTS
FAIR

at the
Las Cruces
Convention
Center

March 1, 5 – 8 pm
March 2, 10 am – 5 pm
March 3, 10 am – 4 pm

\$10 at the door; ticket good for one re-entry during weekend.

Doña Ana Arts & Cultural Center
next to Paisano Café in the Bulletin Plaza
1740 Calle de Mercado • daarts.org • 575-523-6403

Touching moment



BULLETIN PHOTO BY STEVE MACINTYRE

Oscar-winning actor Edward James Olmos embraces playwright Mark Medoff after Olmos was awarded the Mark Medoff Humanitarian award Tuesday, Feb. 19, at the Rio Grande Theatre. The event helped kick off the 4th annual Las Cruces International Film Festival.

'Beale Street': a flawless romance, until life interferes

By **JEFF BERG**
For the Bulletin

If you don't mind a lot of loose ends and unresolved character issues, "If Beale Street Could Talk" is an interesting adaptation of a 1974 novel by noted writer James Baldwin.

The story takes place in 1970s Harlem. Tish, a young, vibrant and intelligent woman, meets Fonny, whose real name is Alonzo, a young, vibrant and intelligent man.

Not satisfied with his work, Fonny steals some tools from his employer and sets off on his own, as an artist, whose talent appears to be wood sculpture.

Tish works in the fragrance department of a large department store.

Director Barry Jenkins, whose "Moonlight" won the Best Picture Oscar a couple of years ago, there is a tender, presents a flawless romance between these two, until life interferes.

Fonny is arrested and charged with rape, a crime he did not commit, and while in jail awaiting trial Tish informs him she is pregnant. Both are overjoyed at the prospect and by now they are engaged, planning to wed as soon as possible. But, as you can guess, there are plenty of roadblocks ahead.

What follows begins with a terrific scene, as Tish's family, which is supportive of the situation, invites Fonny's family over so she can

GRADE: B

Opens tonight at Mesilla's Fountain Theatre for a week's run thanks to the Mesilla Valley Film Society.

break the news.

Jenkins builds a remarkable tension here, as Fonny's mother, a hardcore Christian, is immediately inflamed by the pregnancy, as are her chilly overdressed daughters. Fonny's father, however, has had enough of his wife's Bible thumping and instantly changes the whole scenario of the film. It is a wicked scene, filled with bits of dark humor.

It is obvious that Fonny has been set up, probably by a police officer who Fonny had a run in with earlier. The "victim," for reasons unclear, leaves New York and returns to Puerto Rico, as Tish's family and Fonny's father work to hire a lawyer to get him out of prison.

Sadly, this is where some of the loose ends

come in.

- We never see Fonny's parents again, nor do they visit him in jail.

- We don't find out why the woman who accuses Fonny of rape has done so, other than a scene where she was told to pick him out of a lineup. One assumes that it was something to do with the racist cop, who is only in two brief scenes.

- It is not explained why Fonny was never charged with stealing the tools that he uses at his studio or why his father and Tish's father get away with selling items on the side that they have stolen from their employers.

- There's no trial and no real explanation as to what happened to the lawyer hired to get Fonny out of jail.

- How did Tish's mom find the accuser so easily in Puerto Rico?

- Who is the creep that comes to Tish's counter at work and grabs her hand?

There are a few others, but these really

caught my eye.

The film moves along slowly, partially because nearly every scene in which Tish and Fonny are alone is in slow motion. They are tender scenes, especially during their lovemaking, even if they sometimes feel a bit false.

But the story carries well and Jenkins once again, as he did in "Moonlight" and the unheralded "Medicine for Melancholy" (2008), proves his prowess in handling difficult material and getting the best out of his cast.

Jeff Berg has been reviewing movies for the Bulletin since 2002. He lives in Santa Fe and may be reached at ned-ludd76@hotmail.com.



PHOTO COURTESY ANNAPURNA PICTURES

Tish and Fonny are young, vibrant and intelligent – but it's not enough to keep him out of trouble.

Fountain Theatre
2469 Calle de Guadalupe in Mesilla
575.524.8287 www.mesillavalleyfilm.org

<p>March 1-7 If Beale Street Could Talk A woman in Harlem embraces her pregnancy while she and her family struggle to prove her fiancé innocent of a crime. (OC)</p>	<p>March 8-14 Shoplifting <i>In Japanese w/ subtitles</i> A family of small-time crooks take in a child they find outside in the cold. Oscar nominee, Best Foreign Film</p>
---	--

Nightly 7:30, Saturday matinee 1:30, Sunday matinee 2:30.
No one will be admitted after the film has begun.

LIVE FROM HERE

WITH CHRIS THILE

NM STATE

KRWG

PUBLIC MEDIA

npr

Saturday, 6pm & Sunday, Noon

on FM 90.7 & krwg.org

Support KRWG at krwg.org • 888-922-5794

<p>SHOW TIMES GOD FRI. 3/1 - THUR. 3/7 O MATINES FRI-SUN ONLY</p>	<p>LAUNCH PAD CAFE</p>	<p>ALL SEATS ALL TIMES \$4.00</p>	<p>O MATINES FRI-SUN ONLY MARY POPPINS RETURNS (PG) DAILY (2:00) 5:00 8:00 SPIDER-MAN: INTO THE SPIDER-VERSE (PG) DAILY (2:00) 4:40 7:20 10:00 RALPH BREAKS THE INTERNET (PG) DAILY (2:15) 4:50 7:25 10:00 A DOG'S WAY HOME (PG) DAILY (2:15) 4:35 ESCAPE ROOM (PG13) DAILY 7:00 9:25</p>
<p>GIFT CARDS NOW AVAILABLE ONLINE!! www.allentheatresinc.com</p>	<p>MADEA FAMILY Funeral DAILY 11:30 2:00 4:40 7:15 10:00 (PG13) NO PASS OR DISCOUNT</p>	<p>Greta DAILY 11:30 2:00 4:30 7:00 9:20 (R) NO PASS OR DISCOUNT</p>	
<p>Greta DAILY (9:45) 12:15 2:40 5:00 7:20 9:45 (R) NO PASS OR DISCOUNT</p>	<p>HOW TO TRAIN YOUR DRAGON THE HIDDEN WORLD 2D: (9:30) 12:00 2:00 2:30 5:00 7:00 7:30 10:00 3D: 11:30 4:30 9:30 (PG) NO PASS OR DISCOUNT</p>	<p>HOW TO TRAIN YOUR DRAGON THE HIDDEN WORLD 2D ATMOS: (9:30) 3:00 6:05 7:30 10:00 3D ATMOS: 12:15 9:00 (PG13)</p>	<p>FIGHTING WITH MY FAMILY DAILY 11:30 2:00 4:30 7:00 9:30 (PG13) NO PASS OR DISCOUNT</p>
<p>HAPPY DEATH DAY 2U DAILY 6:30 9:00 (PG13)</p>	<p>IT NT ROMAN DAILY (10:00) 12:15 2:30 4:45 7:00 9:15 (PG13)</p>	<p>IT NT ROMAN DAILY 11:40 4:30 9:30 (PG13)</p>	<p>HAPPY DEATH DAY 2U DAILY 12:00 2:30 5:00 7:30 10:00 (PG13)</p>
<p>THE UPSIDE DAILY (9:30) 12:20 3:15 6:05 9:00 (PG13)</p>	<p>COLD PURSUIT DAILY (10:00) 1:00 4:00 7:00 9:50 (R)</p>	<p>THE PRODIGY DAILY 12:00 2:30 5:00 7:30 10:00 (R)</p>	<p>WHAT MEN WANT DAILY 12:30 3:45 6:30 9:15 (R)</p>
<p>GREEN BOOK DAILY (9:30) 12:30 3:25 (PG13)</p>	<p>THE MULE DAILY (9:45) 12:30 3:15 6:05 9:00 (R)</p>	<p>REGISTER AT ALLENTEATRESINC.COM FOR EMAIL INFO AND SPECIALS</p>	
<p>EVENT CINEMA MADAMA BUTTERFLY 3/17 @ 12:00 3/19 @ 7:00</p>		<p>BRING THIS COUPON TO THE VIDEO 4 AND SEE THE MOVIE OF YOUR CHOICE FOR ONLY \$2.00/PERSON GOOD FOR UP TO 5 PEOPLE WED. & THURS ONLY!!</p>	

PUZZLES

DELICACY BENEATH THE SURFACE

ACROSS

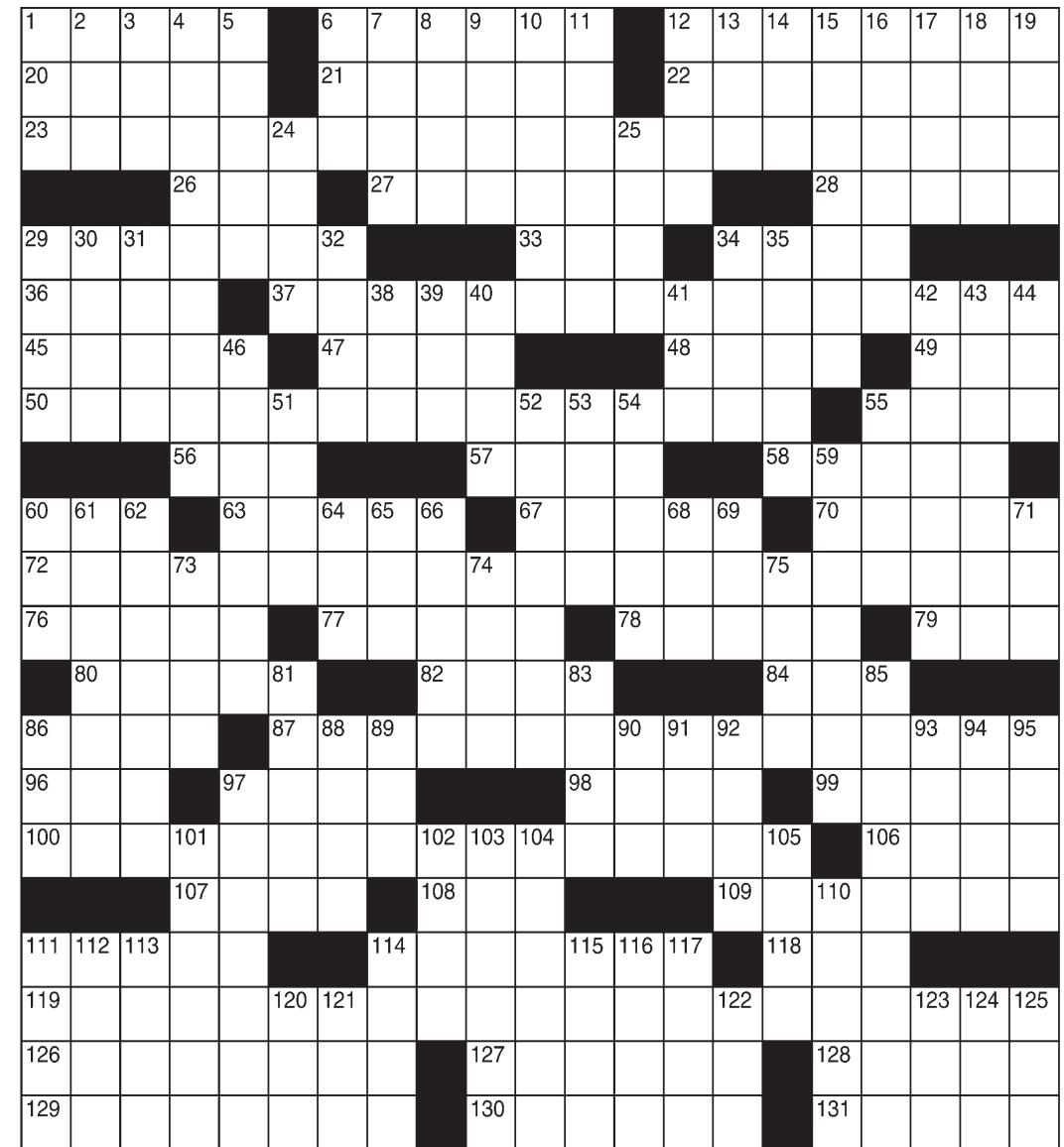
1 Belgradians, e.g.
 6 Head hair hides them
 12 Aped
 20 Irked a lot
 21 Was released
 22 In a mannerly manner
 23 Start of a riddle
 26 Myrna of "The Thin Man"
 27 Seasons' first games
 28 Cried feebly
 29 Gives in (to)
 33 PIN point
 34 TV reporter Burnett
 36 -- Marian
 37 Riddle, part 2
 45 Currently airing
 47 Like straight lines, for short
 48 Recycling receptacles
 49 Notable years
 50 Riddle, part 3
 55 Singer Levine
 56 -- Fridays (restaurant)
 57 Dalai --
 58 Freeze Away targets
 60 Youth org.
 63 Bitten at persistently
 67 Penalized monetarily
 70 Taunt
 72 Riddle, part 4
 76 Nero or Livy
 77 Actress Eva
 78 Actress Eva
 79 Ar follower
 80 Plane parts

82 Korbut of gymnastics
 84 Fleur-de- --
 86 Tick's cousin
 87 Riddle, part 5
 96 Stage decor
 97 Champ's cry
 98 Novelist Seton
 99 "Ask, I might know the answer"
 106 Sword type
 107 See 9-Down
 108 Basketballer Ming
 109 Gift from above
 111 Test pilot's garb
 114 Least dry
 118 Surg. sites
 119 Riddle's answer
 126 More ready to hit the hay
 127 Mexican or Guatemalan
 128 Wall painting
 129 Steed riders
 130 Revises, as text
 131 Messy types

DOWN

1 Toothed tool
 2 King James Bible suffix
 3 San Luis --, California
 4 Really scolded
 5 Rose to one's feet
 6 Police rank: Abbr.
 7 "It's Impossible" singer Perry
 8 Over
 9 With 107-Across, give in to despair

10 "The 25th Annual -- County Spelling Bee"
 11 Tampa Bay city, for short
 12 Stock mkt. debuts
 13 Floor cleaner
 14 In bad health
 15 Neckwear clasps
 16 Make harmonious
 17 Blue hue
 18 Sommer of "The Oscar"
 19 Like much blond hair
 24 No, to Dmitri
 25 Writer Bombeck
 29 Love, to Nero or Livy
 30 Walking stick
 31 French "five"
 32 Loafer, e.g.
 34 Revise
 35 Revive
 38 With 113-Down, product's ultimate consumer
 39 Vietnamese celebration
 40 Hero type
 41 Nets' org.
 42 Form-filling
 43 Millet, fescue and sorghum
 44 Tuber often candied
 46 Going gaga, with "out"
 51 Wedding band
 52 Lieutenant Geordi on "Star Trek: The Next Generation"



53 Exclude
 54 -- Zone
 55 Zone
 59 Disbeliever in God
 60 Exclude
 61 Like a worse blizzard
 62 Confess
 64 Birth mo. for many Leos
 65 Job-creating FDR agcy.
 66 Big shot
 68 LAX stat
 69 Cannes' Palme --

71 Mag heads
 73 Hamlet, e.g.
 74 Ballot site
 75 Takei's "Star Trek" role
 81 Close with stitches
 83 Way out
 85 Full of tension
 86 Soup flavor enhancer, for short
 88 Over
 89 Not Rep. or Dem.
 90 Party card game
 91 Lower Manhattan sch.


92 Turf toughs
 93 Ballyhoo
 94 "Preach it!"
 95 Really mad, with "off"
 97 Krypton-86, for one
 101 Cries feebly
 102 Gazing sort
 103 Baby's toy
 104 New York City moniker
 105 Way out
 110 Instruments with sticks
 111 Lillian of silent films

112 French battle site of '44
 113 See 38-Down
 114 Threadbare
 115 Suffix with sermon
 116 Where the tibia is
 117 Minister (to)
 120 Tiny --
 121 Tiny
 122 Set- -- (brief fights)
 123 Swing to and --
 124 Test center
 125 Lofty rails

Worship Services



Roman Catholic



THE ROMAN CATHOLIC DIOCESE OF LAS CRUCES

VIEW ALL LISTINGS OF CATHOLIC CHURCHES ON OUR WEBSITE

WWW.DIOCESEOFLASCRUCES.ORG

Presbyterian

FIRST PRESBYTERIAN CHURCH


Sunday School: 9 am

Traditional Worship Service: 10:30

English, Spanish, and Korean congregations

200 E. Boutz Road, Las Cruces
www.fpc.lc
(575) 526-5559

New Thought



Wellspring
a new thought spiritual community

Sunday event at 11 am

Edward Burlbaw

140 West Taylor Road
wellspringnow.com

Baha'i Faith

The Baha'i Information & Reading Center
All faiths welcome

Discover the Baha'i Faith

Interfaith Devotional
Sundays 10:30 to 12 p.m.

"All the messengers of God have been sent for the sole purpose of guiding mankind to the straight path of Truth."

525 E. Lohman
Kristy Parks, 575.522.0467

Non Denominational

Southern New Mexico Church of God

Sabbath Services
Interactive Bible Study
Saturdays 1 p.m.
1701 E. Missouri

See us Sat. & Sun.
mornings 10:30 a.m. on Las Cruces cable channel 98

We observe all of God's Holy Days and accept Jesus Christ as our savior.

650-7359

Confidential private counseling also available.

Episcopal

ST. ANDREW'S EPISCOPAL CHURCH

"Digging deep wells so others may drink."


Rector: The Rev. Canon Scott A. Ruthven

Weekday Services
Tuesday - 9:30 AM - Morning Prayer
Thursday - Noon - Holy Eucharist

Sunday Services
8:30 AM - Rite 1
10:30 AM - Rite 2

518 N. Alameda Blvd.
526-6333
www.SaintAndrewsLC.org

Catholic



Holy Family American National Catholic Church

An Inclusive Vatican II Catholic Community

Masses: Sat. 5:30 pm & Sun. 10:30 am

**Clergy: Fr. Jim Lehman, FCM
Fr. Louie Amezaga**

702 Parker Rd.
Las Cruces, NM 88005
575-644-5025

Jewish

TEMPLE BETH-EL OF LAS CRUCES

OURS IS A DIVERSE AND GROWING JEWISH COMMUNITY

FRIDAY SERVICES VARY, PLEASE CHECK OUR WEBSITE FOR THIS WEEK'S TIME

SHABBAT MORNING SERVICES AT 10:15 AM

WWW.TBELC.ORG
3980 SONOMA SPRINGS AVE.
575-524-3380

RABBI LAWRENCE P. KAROL
MEMBER OF UNION FOR REFORM JUDAISM

Advertise Your Worship Services Today!

Call 524-8061 To Be Included

Methodist

UNIVERSITY UNITED METHODIST CHURCH

Pastor: Rev. Dr. Heike Miller

Sunday Worship Services
Traditional — 8:30 a.m.
Family Friendly — 11:00 a.m.
Journey — 5:30 p.m.

Sunday School Classes for all @ 9:45 a.m.

2000 S. Locust
(575) 522-8220
info@uumc-lc.org
www.uumc-lc.org

River of Life

SCHEDULE OF SERVICES

SUNDAY SCHOOL AT 10AM
SUNDAY MORNING WORSHIP SERVICE AT 11AM
WEDNESDAY BIBLE STUDY AT 7PM

1880 N. SOLANO
LAS CRUCES, NM 88001
575-405-4269

www.riveroflifeupc.org



Lutheran

TRINITY LUTHERAN CHURCH-ELCA

Traditional Sunday Worship
9:00 am

Christian Mass Worship
11:30 am - 12:15 pm

Pastor Wayne Nieminen
Pastor Christa von Zychlin
2900 Elks Drive
575.523.4232
www.trinitylutheranlc.org
All are welcome!

St. James' Episcopal Church

Biblically Orthodox Traditional Anglican Worship

Sunday: 8 a.m. & 10:30 a.m.
Wednesday: 10 a.m.

www.stjameslascruces.org

102 St. James Avenue • 526-2389
Corner of University & S. Main

Christian

First Church of Christ, Scientist

Sunday:
Service & Sunday School 10 a.m.

Wednesday:
Testimonies 7 p.m.

All are WELCOME!

325 West Mountain Ave.
Las Cruces, NM
575-523-5063

*Disciples of Christ/
United Church of Christ*

*Disciples of Christ and
United Church of Christ*

CHECK US OUT!

We Don't Bite

FIRST CHRISTIAN CHURCH

Sunday Service 10:15 am
1809 El Paseo 524-3245
Website: fcclc.org

Baptist



FBC Las Cruces

One Church Two Locations

106 S. Miranda

Sunday
Traditional Worship 8:30 am
Sunday School 10:00 am

4201 N. Sonoma Ranch Blvd

Sunday
Worship 9:40 & 11:00 am
Youth Interconnect 4-6:00 pm
Wednesday
Grow Worship
& Bible Study 6:15-7:15 pm
AWANA 6-7:30 pm

524-3691
fbclascruces.com



CALVARY CHRISTIAN CENTER

We are fundamental by belief, Pentecostal by experience. If you are looking for enthusiastic worship and uncompromised preaching of the Word of God, we invite you to come worship. All are welcome.

Pastor Mark Jordan

Worship services 10:30 a.m.
Sundays at 4211 Elks Drive.

For more information, call 575-323-3442

Pentecostal

Greater St. John Church of God in Christ

1615 N. Mesquite Street
Las Cruces, NM 88001
Pastor Robert L. Ramzy, Sr.
(575) 523-0737
<http://www.gsj.church>

Sunday School at 9:45 AM

Sunday Morning Service at 11 AM

Prayer each Tues, Thurs & Fri
11 AM to Noon

Choir Rehearsal, Thursday at 6 PM

Male Chorus Rehearsal, Sat at 6 PM

5th Sunday - Women's Day Service
11 AM (5th Sunday only)

Bible Band/World Mission/YWCC
1st and 3rd Saturday 10 AM to Noon

Call 524-8061 To Be Included

In any language do not forsake your roots

My father often told me that, when he was young, his home was bilingual. He and his brothers spoke both Yiddish and English. My grandfather's decade in South Africa prior to emigrating to the United States provided him with fluency in English, but he continued to speak and read Yiddish.

In the Lithuanian village that was the home of the Karol family, a number of languages were spoken, especially Yiddish. I learned some Yiddish words when I was growing up, and my father taught me how to "decode" the Yiddish language (to correctly



**RABBI
KAROL**
Seeking Harmony

pronounce words in a written text) using a Yiddish-Hebrew bible.

You probably know a few Yiddish words without realizing it. Spiel (to play or present), maven (an expert), schlep (to drag/carry an object), bagel, and others have migrated into the English language.

Perhaps some of you have seen the musical "Fiddler on the Roof," which portrays Jewish life in a small town in Russia in 1905. The original script, with memorable songs by Jerry Bock and Sheldon Harnick, featured a smattering of Yiddish expressions, because Yiddish would have been the

main language spoken in such a community.

This show, which opened on Broadway in 1964, has been performed in many languages around the world. It is no surprise that "Fiddler" was also translated into Yiddish in 1966 by Warsaw native Shraga Friedman.

The Yiddish version is especially significant, because the musical was based on Yiddish stories about Tevye the dairyman, written by Sholom Aleichem.

In 2018, Joel Grey, best known as the "Master of Ceremonies" in the movie "Cabaret" (and father of Jennifer Grey, "Baby" of Dirty Dancing) took on the challenge of directing the first performances of "Fiddler on the Roof"

in Yiddish in the United States.

On Feb. 11, the well-attended production moved to an Off-Broadway theater on 42nd Street in New York City from its original host venue at the Museum of Jewish Heritage in New York's Battery Park. Rhonda and I attended the Feb. 16 performance of "Fiddler on the Roof" in Yiddish.

Most everything looked familiar, as compared to other performances of "Fiddler." This one included a projection onstage of simultaneous translation of all lyrics and dialogue into English and Russian.

In an interview about the production, Joel Grey noted that the Yiddish added "gravitas" to the

musical, as well as an authenticity that recalls the original tales of Tevye.

One of my favorite moments came as Tevye blessed his grandchild before they left their village for the last time to make their way to America. In this production, we could clearly hear him intone the Hebrew of the Priestly blessing, "May the Eternal One bless you and keep you," from the book of Numbers. That was not called for in the original script.

As we watched this performance, Rhonda and I felt that the Yiddish was just – right. Staging this version of "Fiddler on the Roof" in 2019 makes an unabashed declaration that exploring and rediscovering our roots is not

only possible, but crucial.

It was fitting that, on that very day, a distant cousin of mine contacted me, having read one of my previous Bulletin columns about my grandmother. My grandmother Anna and his great-grandmother Minnie were sisters who emigrated to this country over a century ago.

Of course, they both spoke Yiddish.

We can, and should, always remember from where we have come.

Rabbi Larry Karol has served as spiritual leader of Temple Beth-El (www.tbcl.org) in Las Cruces since July 2011. His writings are available at rabbi-larrykarol.blogspot.com.

Soles 4 Souls shoe drive within walking distance

BULLETIN REPORT

For the 8th year, Mesilla Park Community Church will be donating hundreds of new shoes to children in Las Cruces as part of their Soles 4 Souls community outreach program.

At 9 a.m. Saturday, March 9, 850 children and families from 11 schools will be invited to a Shoe Distribution Day at the church. Children will be able to pick up their shoes in a party-like event that includes free games and activities for the families.

Dozens of shoes will also be sent to children in the Rivers of Mercy orphanage of Anapra, Mexico.

More Las Cruces churches – Las Cruces First, Heart for the World, and Triumphant Life – have also partnered with MPCC to bring shoes to students in even more schools in the area.

The children receiving shoes

are from families with financial needs as identified by the social workers, counselors, and teachers working inside the public-school system.

For the weeks and months leading up to the Shoe Distribution Day event, volunteers from MPCC have been invited into schools around the city to record shoe sizes of children. In this way, every pair of shoes purchased and donated by church members corresponds to a single child inside the city's schools. A volunteer team was also sent to Anapra, Mexico, to collect shoe sizes.

"I think that shoes are a wonderful giving opportunity because shoes are very personal. The correct size is important and more critical than clothing size," said Judy Humphries, an organizer for the program, "We have interacted with that child on a one-to-one

basis several times, and each time our volunteers have shown kindness and love to that child. Our volunteers bring the love of Jesus into the school and get to know the staff at the school."

This program is a part of MPCC's larger body of outreach, which also includes free community events and international food drives.

Humphries said that she hopes to see the church expand into other areas to benefit more low-income families as well as those in the city that do not attend a church.

Follow Mesilla Park Community Church on Facebook or Instagram to stay up to date on other upcoming community events.

For more information, contact our church office at 575-524-7658, by email at info@getrealchurch.org, or by visiting www.getrealchurch.org.

RELIGION BRIEFS

Temple Beth-El, 3980 Sonoma Springs Avenue, will again host a service and dinner on Friday, March 1, to participate in Shabbat Across America, an annual event sponsored by the National Jewish Outreach Program. A service with explanations of prayer, accessible music and a brief Torah reading will begin that night at 6 o'clock. A dairy/vegetarian potluck dinner will follow the service. Congregants and guests from the community are welcome and encouraged to attend this service. For more information, contact Rabbi Larry Karol at rabbi@tbcl.org or 575-524-3380.

Dr. Richard Melzer, a retired historian from the University of New Mexico-Valencia, will speak at Temple

Beth-El, 3980 Sonoma Springs Ave. at 2 p.m. Sunday, March 10, about "The Swastika in New Mexico History and Culture." The swastika is most often remembered as a symbol of extreme hate and barbarism under the Nazi regime in Germany. However, it has had a completely different meaning in New Mexico. Dr. Melzer will focus on the swastika as an Indian symbol of good luck and as the name of New Mexico State University's yearbook until the early 1980s. His presentation is sponsored by the New Mexico Jewish Historical Society and the Historical Society of New Mexico's Speakers Bureaus. Refreshments provided.

For more information, call Temple Beth-El at 575-524-3380 or email rabbi@tbcl.org.

Pet peeves: fast talkers, promise breakers and complainers

When I first conceived the idea for this column, my intent was to help us in the aging process to see it as not all bad but having its positive sides. All our experiences can teach us something, make us more caring, and bring blessings to others – if we but pay attention and become less self-centered.

When our children began arriving, we knew very little to nothing about parenting. Often, we would cry out in despair, in our feelings of inadequacy, as to why God had allowed such greenhorns to try to care



RUTH MOORER

Not for Sissies

for and rear children. Schools for parenting were unavailable, and we did not have the time or the money if they had been.

One day, it seemed that the Lord gave me some insight into the answer. I think God said, “Well, Ruth, that is one way that I help the greenhorns to grow up!”

Well, in the growing-up process, hopefully we will learn that some negative behavior can make us very difficult to live with. Today I thought I would mention some of my pet peeves, which may be yours as

well. (First, I must be careful, for it is said that when we are annoyed by someone, the person may simply be reflecting on our own weakness.):

1. People who talk too fast. I do not believe that is just my poor hearing or my age. It seems that the younger a person is, the faster they talk. When I ask someone to please slow down and they graciously comply, then I can usually hear very well. With those who do not, I may just give up and let them think that I understood them.

2. People who make promises or commitments and don't keep them. In effect, they are

not being truthful. As a pastor, I was troubled by people in my church who did not follow through on their promises for they not only did not do their job, but they kept someone else from doing it.

3. Complaining and fault-finding. Those who do are very hard to live with. They seem to find little good to say about people or what is going on around them. They emphasize the negative and eliminate the positive. I heard of one woman of whom it was said that she “seemed to enjoy being miserable.” This characteristic is related to the two views of life which we identify as the optimist and the pes-

simist. The optimist has a hopeful approach to life while the pessimist sees mostly the dark or negative side. I contend that, given the same set of circumstances, the optimist has more fun.

There is the story about an experiment which was done trying to determine the things which make people happy. It was done with two boys about 8 years old. The boys were in two separate locations by themselves for about an hour. One was in a room with all sorts of toys or games a child could imagine. The other location was a barn with no toys, but in the middle of the barn was a huge pile

of manure. On checking on the boys, the first one with all the toys was sitting in the middle of the floor almost crying because he was so bored. The other was found whistling and happily digging into the manure pile. When asked why he was so happy, he replied, “Well, with such a large pile of this stuff there's got to be a pony in here somewhere.”

(To be continued...)

Ruth Justice Moorer is a resident of Las Cruces having moved here in 1996 with her husband, Charles. She has been a public-school science teacher and a United Methodist pastor.



The right therapy in the right place.

For more information on what sets our post-acute rehab therapy apart, call (575) 522-1362.



All faiths or beliefs are welcome.

Social Security and self-employment

By **RAY VIGIL**
For the Bulletin

If you are not self-employed, Social Security taxes are typically taken out of your paycheck automatically. You and your employer each pay a 6.2 percent Social Security tax on up to \$132,900 of your earnings and a 1.45 percent Medicare tax on all earnings in 2019. You don't have to do anything extra for the coverage you will one day receive because your employers handle the deduction as well as matching that contribution. Then they send the taxes to the Internal Revenue Service (IRS) and report your wages to Social Security.

If you're self-employed, the process is a little dif-

ferent. You report your earnings for Social Security and pay your taxes directly to the IRS when you file your federal income tax return. You pay the combined employee and employer amount, which is a 12.4 percent Social Security tax on up to \$132,900 of your net earnings and a 2.9 percent Medicare tax on your entire net earnings in 2019. You are considered self-employed if you operate a trade, business or profession, either by yourself or as a partner. If your net earnings are \$400 or more in a year, you must report your earnings on Schedule SE, in addition to other tax forms you must file.

Net earnings for Social Security are your gross earnings from your trade

or business, minus your allowable business deductions and depreciation. Some income doesn't count for Social Security and shouldn't be included in figuring your net earnings.

You must have worked and paid Social Security taxes for a certain length of time to get Social Security benefits. The amount of time you need to work depends on your date of birth, but no one needs more than 10 years of work.

You can read more about self-employment and Social Security at www.socialsecurity.gov/pubs.

Ray Vigil is a Social Security public affairs specialist in El Paso, Texas.

Saddle up for 20th annual Cowboy Days

By **CRAIG MASSEY**
For the Bulletin

The New Mexico Farm & Ranch Heritage Museum, 4100 Dripping Springs Road, will host its 20th Cowboy Days festival Saturday-Sunday, March 2-3. Hours are 9 a.m.-5 p.m. Saturday, and 10 a.m.-4 p.m. Sunday. Admission is \$5 for everyone 5 and older.

The popular festival is the museum's annual tribute to the state's ranching heritage and brings together skilled riders, talented musicians, outstanding cooks and great performers and offers lots of activities.

"Cowboy Days is the museum's biggest event of the year," said museum Director Mark Santiago. "We have a variety of activities and entertainment for the entire family, and we add something new each year."

A new program this year is "Old West Melodramas," taking place in the museum's theater twice each day. The titles of these skits are: "Evil Banker," "Frontier Mortician," "Pecos Bill and a Matter of Mistaken Identity" and "Billy the Kid." This group of volunteers also will share cowboy and western short stories.

Horseshoeing has also been added to the schedule this year, with two demonstrations each day. Another emphasis this year is chuck wagon cooking, with a second

20 Years
OF
COWBOY DAYS
MARCH 2nd - 3rd

chuck wagon added, this one from the Lonely Goat Ranch near Roswell.

A popular activity involving livestock is the Parade of Breeds, which takes place twice each day. The seven different breeds of beef cattle are brought in to the round pen and guests learn about their different characteristics and origin.

"The Parade of Breeds is one of the best programs we have," said Craig Massey, the museum's communications manager. "It's outstanding visually and educationally. The cattle enthusiastically enter the round pen, and the opportunity to see them up close and interact with an expert on horseback is a rare experience."

Cowboy mounted shooting takes place in the roping arena with a morning and afternoon session each day. The Back Country Horsemen of America's local chapter will also be on hand.

Beginning at 10 a.m. on Saturday, the Sheep to Shawl program begins with the shearing of one of the museum's Debouillet sheep. The wool will be carded and then spun by several demonstrators. A weaver or knitter will then use



PHOTO COURTESY CRAIG MASSEY/ NEW MEXICO FARM & RANCH HERITAGE MUSEUM
A scene from the 2018 Cowboy Days at the New Mexico Farm & Ranch Heritage Museum.

the yarn from the wool to create a shawl that will be raffled. The entire process should take about six hours and the activity will take place inside the sheep and goat barn.

Pony rides for kids (\$5), mechanical bull rides (\$3), mini-train rides (\$3), and stagecoach rides by Frontier Adventures (donation) are offered both days. There are also free children's craft activities and games, including some provided by New Mexico Historic Sites.

Old West Thunder performs a gunfight re-enactment each day at noon. The shows portray

both historical events and dime novel drama. Enchantment Historical

Productions produces "The American Fashion Show," illustrating the

evolution of fashion from colonial times through the 20th century, and "Big Camp Revival Meeting." These programs will be in the museum's theater each day.

The cowboy musical performers include Kenny Arroyos, Voz Vaqueros, the Ramblin' Rangers and Tom Foster Morris & Friends. Ollie Reed, Carol Potenza and Jim Jones of the Western Writers of America also will be on hand to talk about their books and sell and sign copies.

The Cowboy Days CASI (Chili Appreciation Society International) Chili Cook-Off, which debuted two years ago, will return for both days. Tasting for the public is 2-3 p.m. Saturday and 1-2 p.m. Sunday (or until the chili runs out), and the cost is \$5. The money raised on Saturday will benefit the Friends of the

SEE **COWBOY**, PAGE 32



safeGAS

service provided to more than 39,000 customers.

Utilities Customer Service: 541-2111
<http://www.las-cruces.org/en/departments/utilities>



City of Las Cruces

LC3-LV43809

Cowboy Days fills weekend with activities

SATURDAY, MARCH 2, 9 a.m.-5 p.m.

9-10 a.m.: Pony rides on the South 20 (\$5).

9 a.m.-4:30 p.m.: Miniature train rides on the South 20 (\$3).

9:30-10:30 a.m. and 1:45-2:45 p.m.: Western Writers of America, theater.

10 a.m.-4 p.m.: Sheep to Shawl program, sheep and goat barn.

10 a.m.-4 p.m.: Mechanical bull rides, Pavilion on the South 20 (\$3).

10-11 a.m. and 3-4 p.m.: Musician Kenny Arroyos

performs, courtyard.

10:15 a.m.-noon: Ramblin' Rangers perform, courtyard.

10:15 a.m.-noon and 3-5 p.m.: Cowboy Mounted Shooting, roping arena.

10:15 a.m.-noon and 3-4 p.m.: Old West Melodramas, theater.

11-11:30 a.m. and 3:30-4 p.m.: Horseshoeing demonstration near the horse and cattle barn.

11 a.m.-5 p.m.: Stagecoach rides in front of the Bruce King building (donations).

Noon-12:30 p.m.: Old West Thunder gunfight re-

enactment, Heritage Garden.

Noon-1 p.m. and 2-3 p.m.: Parade of Breeds, Round Pen.

Noon-2 p.m.: Musician Tom Foster Morris & Friends, courtyard.

12-3 p.m.: Pony rides on the South 20 (\$5).

12:30-1:30 p.m.: The American Fashion Show, theater.

2-3 p.m.: CASI Chili Cook-Off tasting (\$5).

2-3 p.m.: Voz Vaqueros singers, courtyard.

4-5 p.m.: Big Camp Revival, theater; Live Lively Square

Dance demonstration in the Courtyard.

SUNDAY, MARCH 3, 10 a.m.-4 p.m.

10 a.m.-10:45 a.m.: Western Writers of America, theater.

10 a.m.-noon and 1:30-3 p.m.: Pony rides near the horse and cattle barn (\$5).

10 a.m.-3:30 p.m.: Miniature train rides on the South 20 (\$3).

10:30-11:15 a.m.: Singer Kenny Arroyos, courtyard.

11 a.m.-3 p.m.: Mechanical bull rides, pavilion on the South 20 (\$3).

11 a.m.-4 p.m.: Stagecoach

rides in front of the Bruce King building (donations).

11 a.m.-noon and 3-4 p.m.: Old West Melodramas, theater.

11-11:30 a.m.: Horseshoeing demonstration near the horse and cattle barn.

11:15 a.m.-noon: Ramblin' Rangers perform, courtyard.

Noon-12:30 p.m.: Old West Thunder gunfight re-enactments, Heritage Garden.

Noon-1 p.m. and 2-3 p.m.: Parade of Breeds, Round Pen.

Noon-2 p.m.: Tom Foster Morris & Friends perform,

courtyard.

Noon-1:30 p.m. and 3-4 p.m.: Cowboy Mounted Shooting, roping arena.

12:30-1:30 p.m.: The American Fashion Show, theater.

1-2 p.m.: CASI Chili Cook-Off tasting (\$5).

1:45-2:45 p.m.: Big Camp Revival Meeting, theater.

2-3 p.m.: Voz Vaqueros perform, courtyard.

3-4 p.m.: Live Lively Square Dance demonstration, courtyard; Horseshoeing demonstration near the horse and cattle barn.



PHOTOS COURTESY CRAIG MASSEY/ NEW MEXICO FARM & RANCH HERITAGE MUSEUM
Scenes from the 2018 Cowboy Days at the New Mexico Farm & Ranch Heritage Museum.

COWBOY

CONTINUED FROM 31

Museum and the funds raised on Sunday benefit ACTION Program for Animals.

Dozens of arts and

crafts vendors from as far away as Santa Fe will be selling their items during Cowboy Days, and some new food vendors have been added this year, including Native American food from Santa Fe and BBQ from

the Ruidoso area.

A plant sale from the museum's greenhouse also is part of the festival, as well as demonstrations by the museum's blacksmith and woodcarving by the Doña Ana Woodcarvers.

Each day, the activities conclude with a square-dancing demonstration in the courtyard by Live Lively Square Dance. The public is invited to participate.

Sponsors and supporters of the 20th Cowboy

Days include Friends of the Museum, the museum's volunteers, Whataburger, Mayberry Farms, T-4 Cattle Company, Tharp Farms, Beasley Mitchell & Co. and Citizens Bank of Las Cruces.

For more information, call 575-522-4100. Visit nmfarmandranchmuseum.org.

Craig Massey is communications manager at the New Mexico Farm & Ranch Heritage Museum.



BULLETIN PHOTO BY STEVE MACINTYRE

Participants in the Supermarket Sweep Feb. 21 at Save Mart were, from left, City Councilors Greg Smith and Kasandra Gandara, Las Cruces Police Department Lieutenant Kiri Daines, Green Chamber CEO/President Carrie Hamblen, and the Supermarket Sweep winner, JoAnn Garay, director of the Small Business Development Center.



COURTESY PHOTO

Save Mart, 495 N. Valley Drive, works to bring in customers with special events and special giveaways during the inconvenience of road reconstruction.

Patience during progress

Save Mart grateful for community support during lengthy roadwork

By **CASSIE MCCLURE**
and **SUZANNE MICHAELS**

For the Bulletin

The oranges are stacked neatly, customers are greeted with a friendly “hello!” when they walk in, and Yelp lists Save Mart in the Top 10 best grocery stores in Las Cruces. In an impersonal world, Save Mart on North Valley Drive strives to be the place where you can not only pick up fresh produce and some of the finest cuts of meat, but also get a genuine request to know how you are today.

Jerry Silva and his family have owned Save Mart for nearly four decades and work alongside dedicated employees who have been on the job 30 years. Today, their challenge is giving customers special incentives to work around the Valley Drive road reconstruction and come in to shop.

So, Save Mart has bumped up its social media exposure, created incentives for customers like the Supermarket Sweep and the Gift Basket Give Away – just spend \$25 or more, enter your receipt and possible

win a basket of goodies and a \$40 Save Mart gift card.

The grocery also participates with “Construction Compadres” – a campaign launched by the Las Cruces Green Chamber of Commerce, the Greater Las Cruces Chamber of Commerce and the Las Cruces Hispanic Chamber of Commerce to support local businesses impacted by road reconstruction. More information is available at locallascruceres.com/compadres.

Silva acknowledges the New Mexico Department of Transportation (NMDOT) road reconstruction on Valley Drive has been difficult for

businesses, but says, “We want to thank our customers for their loyal support; it has really helped us to weather the storm.”

“Save Mart has been a local mainstay of Valley Drive for many years and is a perfect example of a business that gives back to the community,” notes

Carrie Hamblen, CEO/President of the Las Cruces Green Chamber of Commerce. “This gro-

SEE **PROGRESS**, PAGE 34

LA CASA, INC.: A NEW BEGINNING

Working Together is Success

**We offer Comprehensive Services from
Emergency Services to Batterers Intervention
Program and Transitional Housing**

Non-Emergencies:
575-526-2819

La Casa, Inc.

24-hour crisis line
575-526-9513
800-376-2272

Please Call our Confidential Hotline for Help and Information regarding any abuse or violence that may be impacting your life.

Thank you to our sponsors for supporting La Casa, Inc.'s Domestic Violence programs.
www.lacasainc.org



COURTESY PHOTO

Desiree Franco, five-year Save Mart employee, helps with special initiatives during the construction, like their drawing for a Grocery Gift Basket. Just spend \$25 or more, enter your receipt and you could win a basket of goodies and a \$40 Save Mart gift card.



BULLETIN PHOTO BY STEVE MACINTYRE

Las Cruces City Councilor Kasandra Gandara competes in the Supermarket Sweep.

PROGRESS

CONTINUED FROM 33

cery provides great meat and produce to customers, as well as long-term employment opportunities and is one of many Las Cruces businesses that deserve our support and shopping. The road reconstruction is really

temporary ... but the impact and value of our local businesses is for the long-term benefit of our community.”

The City of Las Cruces is working to mitigate the stress on Valley Drive businesses as much as allowed by law. The New Mexico anti-donation clause strictly limits what the City can do, but the

City is supporting affected businesses in this manner:

- Work with NMDOT efforts to expedite construction progress by providing after hours City inspectors,
- Provide detour signs to help guide customers to specific businesses,
- Place personalized access signs with specific business names to assist customers getting to Valley Drive businesses,
- Launch “Patience during Progress” advertising campaign to encourage residents to continue to patronize Valley Drive businesses,
- Provide portable lighting along Valley, until permanent lighting is restored,
- Adjust synchronized stop lights during construction to move traffic

as quickly as possible,

- Provide an LCPD surveillance trailer onsite for Valley Drive security, and
- Participate in monthly Valley Drive community meetings hosted by NMDOT to keep businesses informed (held the third Tuesday of every month from 6-7:30 p.m. in the Roadrunner Room of the Thomas Branigan Library).

The City of Las Cruces encourages residents to support local Valley Drive businesses, and work with our local chambers of commerce in their efforts to provide support. Please be patient through the NMDOT Valley Drive road reconstruction. For the most up-to-date information please visit www.valleydrive.net.

BEFORE YOU DIG!

Did you know that gas, water, and utility lines have a huge network that is hidden safely away underground? Digging or excavation of any kind could interrupt those services if you don't call 8-1-1 first. Worse yet damage to utility lines can pose a danger to you, your family, and the community. **BE SAFE**, make a free call, dial 8-1-1 from any phone, anytime **BEFORE** starting any digging projects. We will come out to mark the utility lines in your area. It's fast, it's free, it's 8-1-1. Naturally the smart decision.

As always, Zia personnel are available 24/7 for all natural gas emergencies. Call (575) 526-4GAS (427) if you have a natural gas emergency.

ZIA NATURAL GAS COMPANY

New Mexico's Natural Choice

575-526-4427 • 1-800-453-5546
3700 W. Picacho Ave • Las Cruces
www.ziagas.com

LC3-LV35570

Whether it be money, time or heart invest wisely, share joyfully, and show enthusiasm!

Ronald W. Cavill, CFP®
1155-B Commerce Court
Las Cruces, NM 88011
575-323-3425

CAVILL AND COMPANY
INVESTMENT MANAGERS

Securities offered through LPL Financial, Member FINRA/SIPC. Investment Advice offered through Marshall Investment Management, a registered investment advisor. Cavill and Company and Marshall Investment Management are separate entities from LPL Financial.

Cruces' Electronic Caregiver transforming homecare industry

By **MIKE COOK**
Las Cruces Bulletin

Want to know the future of health care in the United States and around the world? If you live in Las Cruces, just look up.

The top two floors of the city's tallest building – originally the First National Bank Tower and later Wells Fargo Tower – are occupied by Electronic Caregiver (ECG), which now has its name on the tower at 506 S. Main St. and is setting the standard and continuously raising the bar for home health care technology.

Through ECG's research and technological innovations and partnerships that range from New Mexico State University to Amazon Web Services and Intel, founder and CEO Tony Dorhmann is articulating a vision to "transform the industry of homecare."

"People are paying attention," Dorhmann said in a Jan. 31 interview. "There aren't a lot of Las Cruces companies doing these kinds of things."

Electronic Caregiver recently took over another floor at the tower and introduced Addison Care, "the world's first virtual caregiver," according to ECG's website, "named after its ambient augmented reality virtual caregiver, Ad-



PHOTOS COURTESY ELECTRONIC CAREGIVER

Electronic Caregiver founder and CEO Tony Dorhmann

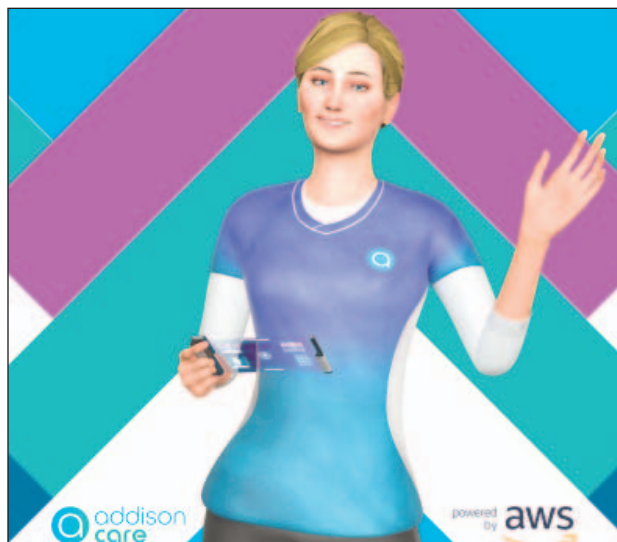
dison, a state-of-the-art, 3D-animated caregiver designed to engage aging and chronically ill clients throughout the home to supplement their care and provide various health and safety features."

Healthcare costs will more than double by 2050, Dorhmann said, and those aged 65 and older have already seen a 400 percent increase in the cost of their health care in the last 20 years.

"Nobody can afford

this," Dorhmann said, especially the elderly, who suffer from multiple chronic illnesses and often take various medications. Along with serious health issues like high blood pressure, diabetes and strokes, seniors must deal with balance impairments and other side effects from the potent drugs they take, he said. Not surprisingly, falls are their No. 1 health complication.

And, in addition to paying for regular doctor



Electronic Caregiver's virtual caregiver, Addison.

visits and prescription medications, seniors are spending hundreds of billions of dollars yearly to deal with the side effects of combining drugs and failure to follow treatment programs, Dorhmann said. In fact, he said, 50 percent of treatment failures are the result of non-adherence because a patient forgets to take his or her medications on time or can't remember if a medication has been taken at all and doubles the dose.

ECG has an answer to all these issues, Dorhmann said: Encouraging a patient "to interact with technology that is far more capable and enjoyable than it's ever been before."

And, he said, it's available for a reasonable

monthly fee.

In addition to reminding clients to take their medications, ECG's virtual caregiver, Addison, conducts regular wellness checks, monitors vitals and provides emergency response and physician-on-demand services. Appearing on 15-inch, in-home monitors, she can carry on two-way conversations and is "programmed for a user's personal needs and plans of care," according to the ECG website. She can talk to clients about their health and a wide range of other topics like hobbies and yoga and can even send gifts to clients.

Through home health-care monitoring, Addison can conduct a virtual examination, do a gait and fall-risk assessment,

provide nutrition and fitness support, detect a lack of activity, deliver a range of notifications and even provide an outdoor pollen count.

ECG is working on the perfect balance for Addison so she's "not too human and not too toy like," Dorhmann said. "It's not just a voice, it's an experience."

The results are "lower costs and proven outcomes," he said, including reductions in patient mortality, pain and suffering, hospital visits and health complications, a lower cost of care and better overall health outcomes for patients and their families.

"We're going to be helping people worldwide," said Joe Baffoe, president of Addison Care, an ECG subsidiary.

In January, ECG gifted NMSU with \$350,000 "to create a laboratory for aging and functional lifespan research, along with research of visual search scenarios and motor performance environments, using augmented and virtual reality," according to an NMSU news release.

"Insurance companies are very happy (patients) are complying with treatment plans," Dorhmann said. And healthcare providers are loving it,

Soundness means more than ‘not lame’

You often hear someone talk about a horse being “sound of wind and limb.” It is an old expression to describe a healthy horse without injuries or maladies.

When you plan to purchase a certain horse, it is wise to have a veterinarian inspect the horse to see how healthy he is. The vet will need to know your plans for the horse because a blemish on a leg that would cause no issues in performance would be a fault on a horse competing in Halter or Conformation classes. An elderly, babysitter horse for the small children would



KATHARINE CHRISLEY-SCHREIBER

Stablewoman

not need the same level of stamina nor leg soundness that a jumper or barrel horse would require.

Your vet will give you a reasonable assessment of the condition of the equine, but can never guarantee that, two weeks down the road, he won't step in a hole or react to being ridden too hard. Once we have a decent degree of health and soundness to work with, it becomes our responsibility to preserve it!

Physical conditioning for a horse is very similar to conditioning of a human athlete. Plenty



COURTESY PHOTO

Recovery protocol depends on how a particular horse is to be used.

of slow work with lots of stretching and a variety of tasks will build the body without stressing it. Recognizing that horses' leg bones are not mature until age 4 and their spines do not calcify until age 6 will help you moderate the demands put upon them. The 2-year-old equine, often required to carry a rider, is the equivalent of a 7-year-old human

child. It becomes obvious to most that working the very young horse is directly related to early breakdown of bone and tissue.

Every horse can have a day of extra exercise – they run too hard in turn out; you get caught in a storm on the trail and have to hurry home; your youngster gets spooked in schooling and runs a bit. When

this happens, you can circumvent lameness or soreness by walking the horse “cool.” This is necessary especially before he drinks or eats because a hot horse drinking cool water can “founder” – the ultimate lameness.

Legs that have been stressed or injured need cold therapy to minimize bruising and inflammation. There are ice boots for horses and a bag of frozen peas works very well, but, you don't want to ice an area too long because it can cause tissue damage. Cold water streaming from a hose is one of the best healers of leg issues that do not have open wounds. We make sure the water is not wasted by hosing legs beside a tree or bush.

At the first sign of lameness, we look at the hooves immediately. Often, a horse that is suddenly three-legged lame has an abscess in the hoof that he won't put weight upon. If there is no swelling or heat in the leg (signs of injury), the “foundation” of the hooves is a likely source. A horse bears heaps of weight upon four slender legs that are actually “digits,” each correlating to one of our fingers!

Heat felt in the hoof can mean an abscess, embedded object or the dreaded founder. A veterinarian is needed.

The problem with inflammation inside the hoof is that its structure is like plywood or an onion. There are laminae in layers that sur-

round the small bones of the foot. Swelling from stress, metabolic changes or injury will force the layers to separate and the hoof wall will pull away from the bone inside. The pain can be intolerable for the horse. If you ever feel a pounding pulse in the lower leg and heat in the hoof, call the vet, it is an emergency.

The equine body is constantly working to balance itself, and injuries to bone will cause a restructuring of minerals to surround and strengthen the injury. Weight is kept off of an injured leg (pain is useful this way) so that it can rest and heal. Inflammation can even act as a natural “splint” to support an area of injury.

Medications to relieve pain and swelling are useful because we must be humane, but if we use them so we can hurry the horse back into service, we will cause more damage in the long term. It is often a matter of what the horse represents to us. At our Sanctuary, each horse is a friend, and comfort is our focus on all levels. If an individual is on pain relievers, we are MORE cautious with them because they might not feel damage that is happening with the pain masked.

Soundness is sometimes a matter of perspective. I had our mare, Clementine, turned out today for exercise. She is “over in the knees,”

*We understand care,
we practice compassion.*

*The Village at Northrise,
The Hallmark*

2882 N. Roadrunner Parkway | Las Cruces, NM 88011
Phone: 575-522-1110 | www.genesisbcc.com



*Independent
Living*

*Call Maia Sideris at 575-556-6102
today to schedule a Tour!*



Genesis HealthCare®



LC3-LV39876



Mike Apodaca, Agent
1100 South Main, Suite 101
Las Cruces, NM 88005
Bus: 575-526-2409
www.mikeapodaca.com

**Drive
home the
savings.**

Car and home combo.
Combine your homeowners
and car policies and save
big-time.

**Like a good neighbor,
State Farm is there®.**
CALL ME TODAY.

State Farm Bank™

State Farm Mutual Automobile Insurance Company
State Farm Indemnity Company, State Farm Fire and Casualty Company
State Farm General Insurance Company Bloomington, IL

LC1-LV45464

NMSU health program ranks among best

By **CARLOS ANDRES LOPEZ**
For the Bulletin

New Mexico State University's online master's program in public health has been ranked as one of the top 10 online programs in the United States by Masters in Public Health Degrees, an online-based resource for information about the top public health schools in

the U.S.

NMSU's Master of Public Health in Health Management, Administration and Policy, an online-based master's program offered through the Department of Public Health Sciences in the College of Health and Social Services, ranked No. 4 on the list.

"NMSU proudly offers (its) MPH program

in an online format to accommodate the busy schedule of a working professional," the website wrote. "The MPH faculty at NMSU are proud to offer excellent and innovative education to their students. Students enrolled in the (NMSU) MPH program can engage in core competencies and develop a strong foundation for the health

field or pursue further studies."

The website also noted that graduates of the NMSU HMAP program have the opportunity to develop into successful leaders and health professionals. The program is fully accredited by the Council on Education for Public Health, a nationally recognized accrediting body for schools of

public health and public health programs.

NMSU's other public health programs, including its bachelor program and graduate public health certificate, also are accredited by CEPH.

Masters in Public Health Degrees based its rankings on relevance to degree of interest, CEPH accreditation, online format and tuition cost, ac-

ording to its website.

To view the complete list, visit www.masterpublichealth.net/best/online-mph-health-policy-management.

For more information about the NMSU program, visit publichealth.nmsu.edu.

Carlos Andres Lopez may be reached at 575-646-1955, carlopez@nmsu.edu.

HOMECARE

CONTINUED FROM 35

he said, because ECG can provide all kinds of data to a patient's clinical dashboard and for medical research – all while complying with the federal Health Insurance Portability and Accountability Act of 1996 (HIPAA), which mandates the privacy of an individual's medical records and health information.

It's also taking the burden off family members whose lives have been disrupted because of the care demanded by aging and infirm parents and

other relatives, he said. And, it's reducing the stress on seniors not only in terms of cost and quality of care, but because there is much less worry about losing their independence, Dorhmann said.

ECG's existing and developing partners include physicians and home healthcare providers, along with rehabilitation centers, medical equipment companies, hospitals, senior living professionals, specialists in everything from audiology to eye care and a host of device partners.

With thousands of customers and nearly \$40

million in investments so far, Dorhmann said major investment banks and "big strategic partners" are pumping additional capital into ECG. Future plans include building a tech campus on Las Cruces' East Mesa with 1,100 employees.

Dorhmann founded ECG seven years ago, and since moving it to Las Cruces has grown his workforce to 100-plus employees.

For more information, visit www.electroniccare-giver.com.

Mike Cook may be contacted at mike@lascrucesbulletin.com.

SOUNDNESS

CONTINUED FROM 36

has had a skull fracture in her way past, came to us with a hoof split open up to her leg (that has healed!).

If she stands around in her pen all the time, she gets stiff and sore. When leading her across the stable yard to turn out, it might appear that she is too sore to move much, but when she gets to move around (even gallop)

in the bigger area, she improves.

A different horse might get much worse after exercise. Generally, old, set, "chronic" disorders can improve with movement while acute, recent injuries need rest and more rest. It is always an individual thing. Every horse is different, just as every person is unique.

At Dharmahorse we use many plant therapies for old, new and recurring unsoundness.

We also teach workshops on Healing with Plants and make our own medicines. It's a journey.

Katharine is a natural health consultant and equine specialist who is the founder and president of Dharmahorse Equine Sanctuary. She teaches riding and equine-assisted learning for all ages on the "now wanted" horses in her care. She can be reached at katharinechrisley@yahoo.com.

Visit us at www.lascrucesbulletin.com

We Have Your Windows Covered!



Spring CREST
CUSTOM DRAPERIES

Visit our Showroom to see complete selection of Custom Window coverings, Shutters and Bedding

2310 N. Temple • 526-2880 • www.SpringCrestNM.com

10-year Guarantee

MERAZ PAINTING INC.

ELASTOMERIC STUCCO COATING
ELASTOMERIC ROOF COATING
SPECIAL STAIN & EPOXY CONCRETE COATING

575.649.8193 • 575.382.5824
www.merazpainting.com

Call for FREE Estimates

5% off when you mention this ad!

LC3-LV44136

Batter up

New Mexico State baseball brings the lumber to start the season

How potent is the New Mexico State University offense?

In the team's first six games, at home against Texas Southern and Yale, the Aggies scored 131.

That's runs, not points. We're not talking football here.

One-hundred-thirty-one. That's an average



MARTY RACINE
Aggie Athletics

of 22 runs a game.

Within those stats, the 98 runs scored in the opening four-game series against Texas Southern were the most for any series in school history, breaking by 10 the old record set in 2005.

Of course, it's early.

We have no idea how good either of these opponents are. It's early and still cold, so the hurlers are not really loosened up yet.

And ... the Aggies did drop a 4-2 contest to Yale before bouncing back 13-6 to close out their first homestand of the season at 7-1.

We also note that the schedule, at least on paper, gets stronger against some traditionally tough schools – Arizona, Arizona State and Texas Tech, all on the road. Throw in the Albuquerque Lobos, Big 10 Nebraska (on the road) and Grand Canyon University, picked to win the Western Athletic Conference this year, and we'll know a lot more about this squad as spring brings real baseball weather to the land.

But so far, this club is living up to preseason expectations, when they were picked to finish second in the conference in the coaches' poll and placed six players – more than any other school – on the preseason all-WAC team.

One of those six, Aggie second baseman



PHOTO COURTESY JOHN VU/NMSU

Starting pitcher Chance Hroch, who went 7.1 innings, fist bumps catcher Braden Williams en route to the Aggies' 13-6 win over Yale Sunday, Feb. 24. Hroch, a junior righthander out of Temecula, California, is already 2-0 this season, with a miniscule 0.73 ERA.

Nick Gonzales came out of the homestand hitting .675, with 27 hits in 40 plate appearances, 27 RBI and 19 runs scored. In the season's first two weekends, he's already been twice named WAC Hitter of the Week.

Another preseason selection, shortstop Joey Ortiz, hit .531 with 18 runs scored and 17 RBI.

Heading on the road to Texas Tech, nine Aggies were hitting .400 or

better, with five more over .300.

All that translated into leading the nation in 10 categories, nine of those offensive.

After Tuesday's game at Tech, the Aggies get some more early home cooking with a four-game series this weekend against Delaware and another four-gamer the following weekend (March 8-10) vs. La Salle.

All games are at sce-

nic Presley Askew Field, starting at 6 p.m. each Friday and a 1 o'clock doubleheader each Saturday. This Sunday's game is at noon, while next Sunday's is at 1 p.m.

And then it's on to Tempe for Arizona State, when we'll begin to know something.

Marty Racine may be reached at editor@las-crucesbulletin.com.

Old Timers Golf Group



PHOTO COURTESY JIM REWIS

The El Paso/Las Cruces Old Timers Golf Group held their monthly tournament at Ascarate Golf Course Feb. 18. The first-place team members, seated left to right, were Avelino Martinez, Ascarate Golf Course; Fred Chavez, Vista Hills Country Club; Danny Jurado, Horizon Golf Club; Marshall Miller, Dos Lagos Golf Course. Among second place members, standing left to right, Booker Munn, Vista Hills Country Club; and Al Marquez, Lone Star Golf Club. The March tournament will be at Underwood/Ft. Bliss Monday, March 4.

New golf rules already causing controversy

From the very start there has been controversy over the new golf rules, just as in any sport. As for the “new” option of leaving the flagstick in the hole when putting, that actually reverts to an old rule. Only in the modern era was there a penalty for holing a putt on the green with the flagstick in.

As for any benefit for leaving the flagstick in, I defer to short-game guru Dave Pelz, who, after conducting scientific testing and research, states, “My studies show conclusively that you should putt with the pin in!” In fact, Pelz conducted much



CHARLIE BLANCHARD
Golf Doctor

the same test in 1990 (published in GOLF, December 1990) and reached the same conclusion then: a higher percentage of putts made results from “a significant amount of energy lost from a putt’s speed when the ball hits the fiberglass flagstick. The speed loss enables gravity to pull the slower moving ball down into the hole more often.”

Actually, the new-old flagstick rule was meant to speed up the game. I can personally report that it has speeded up the pace of play in my group at PHCC by 18 minutes per round.

Another rule change

concerns the dropping of the golf ball, either due to a penalty or a non-penalty relief. Previously a drop was at shoulder height. Now it’s exactly knee height. This change has several tour players befuddled. I found one blogger who proposed there be an official known as a “certified ball dropper,” or CBD for short. As we see weekly every time a tour player has potential issue, they call in a certified rules official. So why not a CBD?

In other news, during the past few weeks we have had a couple of “villains” emerge from the professional ranks. First, was Sergio Garcia, who suffered a meltdown while playing the Saudi

International tournament in Saudi Arabia. (Whether members of the European Tour and the PGA Tour should have agreed to play in Saudi Arabia, which has one of the worse human rights records on the planet, is a subject open to debate.) Garcia gouged out several swaths of green with his putter, as well as angrily flailing sand away several times when his bunker shot came up short.

This is the same volatile guy who bent over and spit into the cup after a missed putt at Doral in 2007. As a result of his bunker damage and vandalism to no fewer than five greens Garcia was disqualified. In a post-round statement Garcia

admitted that his actions were “not an example I want to set.” Right.

Someone we would never have expected to be cast as a villain is popular PGA Tour veteran Matt Kuchar. Turns out Kuchar is currently in public relations hell after winning the Mayakoba Golf Classic, and a \$1.3 million payout, in Mexico last November, and then “stiffing” his substitute club caddie with only \$5,000. It’s common for Tour players to pay their caddies 10 percent of their winnings. That might have been as much as \$130,000 for David Ortiz, who caddies for club golfers for \$100 to \$200 a day.

Kuchar’s win, with

Ortiz on the bag, could have changed Ortiz’ life. But it wasn’t until January that Ortiz notified Kuchar’s agent, Mark Steinberg, that he would not even accept the \$15,000 then offered.

“They can keep their money,” Ortiz said. Someone had gotten in Ortiz’ ear prompting him to publicly shame Kuchar. Despite thousands of positive images, big support of charities and countless friendly encounters with fans, it only takes one stupid mistake to erase all that. Instead of swooning “Koooooch,” fans now go “Scroooooog.”

Contact Charlie Blanchard at docblanchard71@gmail.com.

NM STATE ATHLETICS CALENDAR

LAST HOME GAME



NEW MEXICO STATE
MEN'S BASKETBALL



NM STATE
VERSUS
CALIFORNIA BAPTIST
SATURDAY, MARCH 9 | 7 PM
SENIOR NIGHT

NM STATE SOFTBALL

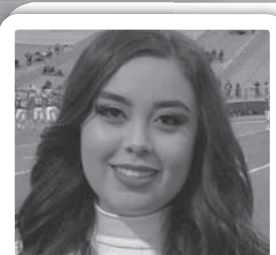


NM STATE VS. ARIZONA
TUESDAY, MARCH 5 | 3:30/5:30PM(DH)
NM STATE SOFTBALL COMPLEX
TICKETS: 575-646-1420

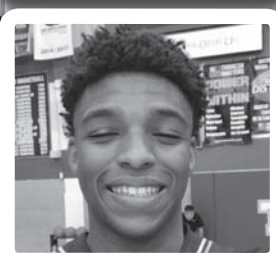


ATHLETE OF THE WEEK

SPONSORED BY:
THE LAS CRUCES
Bulletin



Giovana Ruiz is a 17-year-old senior at Mayfield High School. She is on the Lady Trojan varsity dance team. At the NMSU competition, Ruiz placed third in pom and placed second in pom at the Eagle Nation Spirit Fest. She is a leader, team player, hard-worker, humble, dedicated, committed, honest, loyal, responsible, respectful, polite, kind and a go-getter. Ruiz is also a dedicated student, with a 3.0 GPA. Even when an injury kept her from participating for two months, Ruiz was there for every practice/performance, on time, with a smile on her face, encouragement and cheering for her teammates. She has been consistently outstanding throughout her time on the team.



Jorell Saterfield is an 18-year-old senior at Mayfield High School. He plays guard on the Trojan basketball team. This season, Saterfield has averaged 29 points, 7.8 rebounds and 2.3 assists per game. He is an athlete with great poise and has confidence that allows him to stay his course. Saterfield has a positive attitude and outlook, is consistently smiling and has an enduring mindset. He has signed a scholarship to play basketball at University of Southern Mississippi. Saterfield is a dedicated student, with a 2.80 GPA and outside of sports and school enjoys spending time with family, friends and likes to watch mysteries and animated shows.

MAYFIELD HIGH SCHOOL

REMAIN PROTECTED IN YOUR HOME WITH PRO HEALTH



- » Medication Reminders
- » 24/7 Emergency Response
- » pocketMD



-  /electroniccaregiver
-  @electroniccaregiver
-  @electroniccare

Get **pro health** Today!
electroniccaregiver.com
800 alarm-55

electronic caregiver
506 S Main St., Ste 1000
Las Cruces, NM 88001