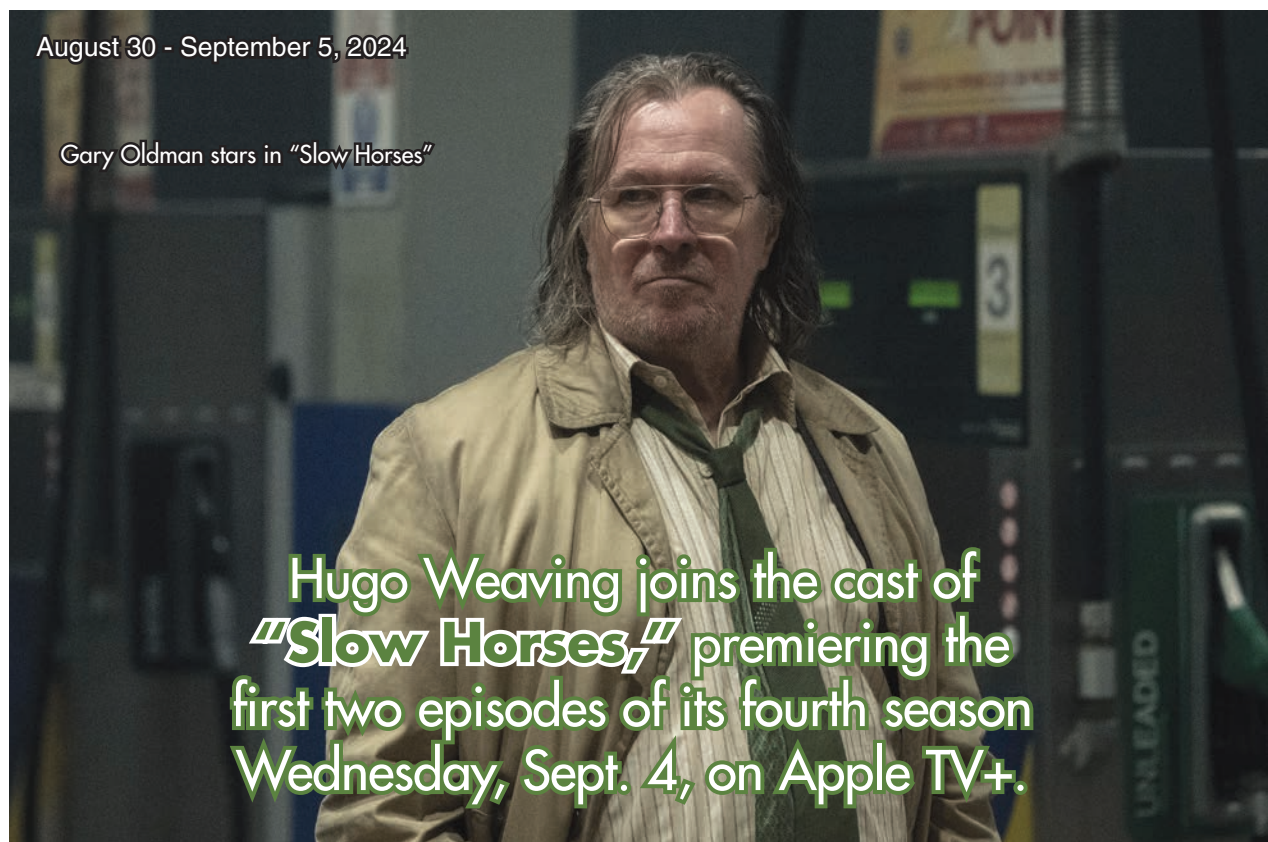


THE LAS CRUCES Bulletin *Your* **WEEKLY GUIDE TO TV & ENTERTAINMENT**

August 30 - September 5, 2024

EXPERIENCE SOUTHERN NEW MEXICO
DESERT *exposure*
 Monthly in Southern New Mexico:
 "The biggest little newspaper in the Southwest"
 www.desertexposure.com



Gary Oldman stars in "Slow Horses"

Hugo Weaving joins the cast of "Slow Horses," premiering the first two episodes of its fourth season Wednesday, Sept. 4, on Apple TV+.

Always at your fingertips!

Check out the entire Bulletin in our weekly e-edition.

No login. No fees.

eBulletin

www.lascrucesbulletin.com

celebrityupdate

BY JAY BOBBIN



Carol Burnett

OF THE CAROL BURNETT SHOW
 ON CATCHY COMEDY, METV

Emmy Awards. It was shown in that form during a recent weekend "Binge" marathon on Catchy Comedy, but soon after the original run ended, the episodes from five of its seasons were edited into a 30-minute format — largely focused on the comedy content, though musical sequences sometimes were kept in, too — and the show was renamed "Carol Burnett and Friends."

Those edited programs have long been a weekday attraction on MeTV, but the issue has been confused a bit more by the fact that the program also is known there presently as "The Carol Burnett Show" in its half-hour form. Arguably the best way to tell the

lengths apart before a viewing is simply to look at a programming guide and see how long the show is slated for, 30 minutes or 60 minutes.

Burnett, who has made Primetime Emmy history this year as the oldest female comedy nominee ever with her current supporting-actress bid for Apple TV+'s "Palm Royale," has very actively helped to promote direct-marketing sales of "The Carol Burnett Show" DVDs by participating in commercials for them. (She even has autographed some of the sets.) However, different collections culled from the series also are available from various merchants, either in physical stores or via online sellers.

Q: Why are some repeats of "The Carol Burnett Show" an hour long, while others are only a half-hour long?

A: Originally, the classic comedy-variety series ran for an hour weekly during its 1967-78 tenure on CBS, when it earned a total of 25 Primetime

INNOVATIVE PHARMACY SOLUTIONS!

RxInnovations LAS CRUCES

Providing local, full-service pharmacy needs for all types of facilities.

- Long-term care
- Assisted Living
- DD Waiver
- Skilled Nursing
- Hospice and more

Call us today! 575-288-1412

Ask your provider if they utilize the many benefits of RX Innovations, such as: Blister or multi-dose packaging, OTC's & FREE Delivery. Learn more about what we do at www.rxinnovationslc.net

morning edition[®]

with Host KC Counts

Monday - Friday
6:00a - 9:00a

Start your morning with up-to-the-minute news and stories for the day ahead!

KRWG.ORG 90.7 FM




What's Available NOW On **hulu**

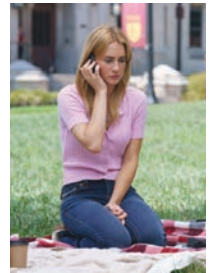
“English Teacher” - Season 1 (Sept. 3, Series Premiere)

Created by Brian Jordan Alvarez, this new FX comedy series stars Alvarez as Evan Marquez, a high school teacher in Austin, Texas, who often finds himself at the intersection of the personal, professional and political aspects of working at a high school. By his side is his friend group of other teachers, including Gwen Sanders (Stephanie Koenig) and Markie Hillridge (Sean Patton). The eight-episode season follows Evan as he navigates his relationships, his students and his fellow faculty and tries to answer the question: can you really be your full self at your job?



“Tell Me Lies” - Season 2 (Sept. 4)

In this adaptation of Carola Lovinger's novel of the same name, the tumultuous, eight-year relationship between Lucy Albright (Grace Van Patten) and Stephen DeMarco (Stephen DeMarco) becomes more toxic over the years, permanently altering not only their own lives, but also the lives of everyone around them.



“The Secret Lives of Mormon Wives” - Season 1 (Sept. 6)

Gaining popularity on the social media platform TikTok, a group of Mormon mom influencers implode when they get caught in the midst of a swinging sex scandal that makes international headlines. Now, their sisterhood is shook to its core. This unscripted series follows Taylor Frankie Paul, Demi Engemann, Jennifer Affleck, Jessi Ngatikaura, Layla Wessel, Mikayla Mathews, Mayci Neeley and Whitney Leavitt as they try to recoup from their fall from grace.



“Something in the Water” (Available Now)

Reunited for a destination wedding, five girlfriends decide to rent a boat to spend the day along the coast. However, when they get stranded in open water, they find themselves in a fight for their lives against circling sharks and Mother Nature. Ellouise Shakespeare-Hart, Lauren Lyle, Hiftu Quasem, Nicole Rieko Setsuko and Natalie Mitson star.



FRIDAY EVENING

S - Spectrum D - Dish DTV - DirecTV

MOVIES

SPORTS

SPECIALS

AUGUST 30, 2024

| | S | D | DTV | 6 PM | 6:30 | 7 PM | 7:30 | 8 PM | 8:30 | 9 PM | 9:30 | 10 PM | 10:30 | 11 PM | 11:30 | 12 AM | 12:30 | | |
|-----------|-----|-----|-----|---|---------------------|---|---|---|---|--|--------------------|--|--|---------------------------------------|-----------------|---------------------------|---------------|------------|------------|
| PBS-KRWG | 2 | 22 | 22 | (5:30) PBSNews | Context | Week (N) | Hoover (N) | Bee Gees: In Our Own Time | | | | | All New Rock, Pop and Doo Wop (My Music Presents) | | | PBS News Hour | | | |
| CBS-KDBC | 3 | 4 | 4 | Jeopardy! | Wheel | Let's Make a (N) | | Lingo (N) | | Blue Bloods "On the Ropes" | | CBS4 News | (:35) Late Show-Colbert | (:35) After Midnight (N) | | (:35) Paid Prog. | | | |
| ABC-KVIA | 7 | 7 | 7 | News (N) | ET (N) | Jeopardy! "The Finals" | | 20/20 (N) | | | | News (N) | (:35) Borderland | (:05) Jimmy Kimmel Live! | (:05) Nightline | (:35) Hollywood | | | |
| FOX-KFOX | 8 | 14 | 14 | Big Bang | Big Bang | WWE Friday Night SmackDown (N) | | | KFOX14 News at Nine (N) | | (:05) Mod Fam | (:35) Mod Fam | (:05) ICRIME | (:35) Simpsons | (:05) Two Men | (:35) Two Men | | | |
| NBC-KTSM | 9 | 9 | 9 | News at 6 (N) | Studio 9 | Got Talent "Quarterfinals 3" | | Paris Paraly. Primetime: Opening Ceremony & More (N) | | KTSM News | | (:35) Overtime | (:50) J. Fallon | (:55) Late Night With Seth Meyers (N) | | | | | |
| UNI-KINT | 10 | - | 26 | La rosa de Guadalupe (N) | Golpe de suerte (N) | | | Marea de pasiones (N) | | Ellas soy yo Gloria Trevi (N) | | Noticias 26 | SaborDe | Deportivo (N) (Live) | | Marea de pasiones | | | |
| TEL-KTDO | 11 | 48 | 48 | La isla desafío extremo | | | | | | El Conde: "Una bonita pareja" | | Noticiero | (:35) Noticias | Zona mixta | Caso cerrado | Caso cerrado | | | |
| UMAS-KTFN | 13 | 759 | 65 | Amor prohibido (N) | | | Enamorándonos (N) (Live) | | | Pablo Escobar (N) | | Faisy Nights (N) | | Pablo Escobar | | Amor prohibido | | | |
| CW-KVIA2 | 14 | 17 | 8 | Sheldon | Sheldon | The Conners | The Conners | Inside the NFL | | Seinfeld | Seinfeld | Sheldon | Pictionary | Pictionary | 25 Words | Pawn Stars | Storage Wars | | |
| A&E | 43 | 118 | 265 | The First 48 | | Cold Case Files: DNA (N) | | Tell "Crushing Suspicion" (N) | | (:05) The First 48 | (:05) The First 48 | (:05) The First 48 | (:05) Cold Case Files: DNA | (:05) Tell "Crushing Suspicion" | | | | | |
| AMC | 57 | 131 | 254 | *** Ghostbusters ('84) Dan Aykroyd, Harold Ramis, Bill Murray. | | | *** Ghostbusters II ('89) Dan Aykroyd, Sigourney Weaver, Bill Murray. | | | *** Life of the Party ('18) Melissa McCarthy. | | | | | | | | | |
| COMEDY | 35 | 107 | 249 | South Park | South Park | South Park | South Park | South Park | South Park | South Park | South Park | South Park | South Park | South Park | South Park | South Park | South Park | | |
| COOK | 123 | 113 | 232 | Fire Masters | | Fire "For the Love of Chuck" | | Fire Masters | | Fire "No Charred Feelings" | | Fire Masters | | Fire "For the Love of Chuck" | | Fire Masters | | | |
| DSC | 47 | 182 | 278 | Gold Rush-Res. (N) | | Bering Sea Gold (N) | | Catch "Blow the Man Down" | | Contraband "Seaweed" | | Gold Rush-Res. | | Bering Sea Gold | | Catch "Blow the Man Down" | | | |
| E! | 37 | 114 | 236 | (4:00) *** The Help ('11) | | *** The Help ('11) Emma Stone, Bryce Dallas Howard, Viola Davis. | | | | Unforgettable "The Life and Death of Princess Diana" | | True Hollywood Story | | | | | | | |
| ESPN | 27 | 140 | 206 | (5:00) College Football Temple at Oklahoma (N) (Live) | | | Scoreboard | | College Football TCU at Stanford From Stanford Stadium in Stanford, Calif. (N) (Live) | | | SportsCenter (N) (Live) | | | | | | | |
| FOOD | 40 | 110 | 231 | Diners, Drive | Diners, Drive | Diners (N) (P) | Diners, Drive | Diners, Drive | Diners, Drive | Diners, Drive | Diners, Drive | Diners, Drive | Diners, Drive | Diners, Drive | Diners, Drive | Diners, Drive | Diners, Drive | | |
| FX | 29 | 136 | 248 | (4:00) * Captain America: Wint... | | *** Doctor Strange in the Multiverse of Madness ('22) Benedict Cumberbatch. | | | | *** Shang-Chi and the Legend of the Ten Rings ('21) Awkwafina, Simu Liu. | | | | | | | | | |
| GALA | 25 | 273 | 404 | Una familia de diez (N) | | Vecinos (N) | | La familia P. Luche (N) | | 40 y 20 | | 40 y 20 | | Renta | Renta | Alma de | Alma de | Simón dice | Simón dice |
| GOLF | 24 | 401 | 218 | (5:00) LPGA Tour Golf | | | 2024 TOUR Championship Second Round From East Lake Golf Club in Atlanta. | | | DP World Tour Golf Betfred British Masters, Second Round | | | | | | | | | |
| HALL | 58 | 185 | 312 | (5:00) * Rescuing Christmas | | * Falling Like Snowflakes ('24) Rebecca Dalton. | | Golden Girls | | Golden Girls | | Golden Girls | Golden Girls | Golden Girls | Golden Girls | Golden Girls | Golden Girls | | |
| HGTV | 41 | 112 | 229 | Dream Home | Dream Home | Dream Home | Dream Home | Dream Home | Dream Home | Dream Home | Dream Home | Dream Home | Dream Home | Dream Home | Dream Home | Dream Home | Dream Home | | |
| HISTORY | 44 | 120 | 269 | Aliens "Egypt's Giant Tombs" | | Ancient Aliens (N) | | (05) Ancient Aliens | | (05) Ancient Aliens | | (05) Ancient Aliens | | (05) Ancient Aliens | | (05) Ancient Aliens | | | |
| LIFE | 39 | 108 | 252 | Castle | | Castle "Pretty Dead" | | (05) Castle "Knockout" | | (05) Castle "Rise" | | Castle | | Castle "Pretty Dead" | | (05) Castle "Knockout" | | | |
| LIFEMOV | 119 | 109 | 253 | * My Husband's Worst Mistake ('23) Matt Wells. | | * The Man With My Husband's Face ('23) Koko Marshall. | | | | * My Husband's Worst Mistake ('23) Matt Wells. | | * My Husband's Worst Mistake ('23) Matt Wells. | | * Man With My Husband's Fa... | | | | | |
| NBATV | 273 | 156 | 216 | NB80's | NB80's | NB80's | Bad Boys | | | NB90's | NB90's | NB90's | NB90's | NB90's | NB90's | The Ultimate Draft | | | |
| PAR | 34 | 241 | 241 | (5:05) *** John Wick: Chapter 3 -- Parabellum ('19) | | | Yellowstone "Daybreak" | | | | (55) Yellowstone | | Yellowst. "No Good Horses" | | Yellowstone | | | | |
| SYFY | 59 | 122 | 244 | (5:45) *** Harry Potter and the Chamber of Secrets ('02) Rupert Grint, Emma Watson, Daniel Radcliffe. | | | (35) *** Harry Potter and the Prisoner of Azkaban ('04) Rupert Grint, Daniel Radcliffe. | | Movie | | | | | | | | | | |
| TBS | 33 | 139 | 247 | *** Welcome Home Roscoe Jenkins ('08) (:55) ** Blue Streak ('99) Luke Wilson, Martin Lawrence. | | (55) *** Dumb & Dumber ('94) Jeff Daniels, Lauren Holly, Jim Carrey. | | (10) * Anger Management | | | | | | | | | | | |
| TCM | 169 | 132 | 256 | *** Swing Time ('36) Ginger Rogers, Fred Astaire. | | *** Shall We Dance ('37) Ginger Rogers, Fred Astaire. | | *** The Major and the Minor ('42) Ginger Rogers. | | *** Primrose Path ('40) | | | | | | | | | |
| TLC | 45 | 183 | 280 | 90 Day Fiancé "More to Love: Tell All: No Limits Part 5" (N) | | | 90 Day (N) | | Forbidden Love | | 90 Day | | 90 Day Fiancé "More to Love: Tell All: No Limits Part 5" | | 90 Day | | Forbi Love | | |
| TNT | 32 | 138 | 245 | (4:15) *** The Dark Knight Rises ('12) Christian Bale. | | All Elite Wrestling (N) | | *** Batman Begins ('05) Michael Caine, Liam Neeson, Christian Bale. | | Cold Case "Boy in the Box" | | | | | | | | | |
| TRAV | 49 | 196 | 277 | The Dead Files | | | The Dead Files | | The Dead Files | | The Dead Files | | The Dead Files | | The Dead Files | | | | |
| TRU TV | 30 | 242 | 246 | (5:00) College Football | | | Baseball | | Wipeout | | Imp. Jokers | | Imp. Jokers | | Imp. Jokers | | Imp. Jokers | | |
| USA | 31 | 105 | 242 | Chi. Fire "Arrest in Transit" | | Chicago Fire "Santa Bites" | | Chicago Fire "Let Him Die" | | Chi. Fire "Ambush Predator" | | Chicago Fire "Three Bells" | | Chi. Fire "Call It Paradise" | | Dateline "Vendetta" | | | |

MONDAY EVENING

S - Spectrum D - Dish DTV - DirecTV

MOVIES

SPORTS

SPECIALS

SEPTEMBER 2, 2024

| | S | D | DTV | 6 PM | 6:30 | 7 PM | 7:30 | 8 PM | 8:30 | 9 PM | 9:30 | 10 PM | 10:30 | 11 PM | 11:30 | 12 AM | 12:30 | | |
|-----------|-----|-----|-----|--|---|---|--|------------------------------|--|----------------------------------|----------------------------------|---|---------------------------------|----------------------------|--------------------------|----------------------------|--------------|--------------|--|
| PBS-KRWG | 2 | 22 | 22 | (5:30) PBSNews | Context | Moments to Remember (My Music Presents) | | | Rick Steves Mighty Alps | | | Aging Backwards 4 | | PBS News Hour | | | | | |
| CBS-KDBC | 3 | 4 | 4 | Jeopardy! | Wheel | NCIS "The Plan" | | NCIS: Sydney "Ghosted" | | NCIS "Operation Red Rabbit" | | CBS4 News (:35) Late Show-Colbert (N) | | (:35) After Midnight (N) | | (:35) Paid Prog. | | | |
| ABC-KVIA | 7 | 7 | 7 | News (N) | ET (N) | Celebrity Family Feud | | Celebrity Family Feud | | Celebrity Family Feud | | News (N) (:35) Jimmy Kimmel Live! (N) | | (:35) Nightline (:05) ET | | (:35) Hollywood | | | |
| FOX-KFOX | 8 | 14 | 14 | Big Bang | Big Bang | Name That Tune (N) | | The 1% Club (N) | | KFOX14 News at Nine (N) | | (:05) Mod Fam (:35) Mod Fam (:05) iCRIME (:35) Simpsons (:05) Two Men (:35) Two Men | | NBC-KTSM | | 9 9 9 KTSM 9 News at 6 (N) | | | |
| NBC-KTSM | 9 | 9 | 9 | KTSM 9 News at 6 (N) | American Ninja Warrior Las Vegas Finals 3 (N) | The Wall (N) | | The Wall (N) | | KTSM News (:35) Tonight Show (N) | | (:35) Seth Meyers (N) | | (:35) Friends | | | | | |
| UNI-KINT | 10 | - | 26 | Rosa "Un papá de cartón" (N) | Golpe de suerte (N) | Marea de pasiones (N) | | Ella soy yo Gloria Trevi (N) | | Noticias 26 SaborDe | | Deportivo (N) (Live) | | Marea de pasiones | | | | | |
| TEL-KTDO | 11 | 48 | 48 | La isla desafío extremo | Enamorándonos (N) (Live) | | Pablo Escobar (N) | | Como dice el dicho | | Pablo Escobar | | Amor prohibido | | | | | | |
| UMAS-KTFN | 13 | 759 | 65 | Amor prohibido (N) | Sheldon | All American (N) | | 61st Street "The Offer" (N) | | Seinfeld | | Seinfeld | | GMFB: Overtime (N) | | Pawn Stars | | Storage Wars | |
| CW-KVIA2 | 14 | 17 | 8 | Sheldon | Sheldon | All American (N) | | 61st Street "The Offer" (N) | | Seinfeld | | Seinfeld | | GMFB: Overtime (N) | | Pawn Stars | | Storage Wars | |
| A&E | 43 | 118 | 265 | The First 48 "Devil's Trail" | The Chicano Squad "Part 1" (N) | | (:05) The First 48 | | (:05) First 48 "Devil's Trail" | | (:05) The Chicano Squad "Part 1" | | | | | | | | |
| AMC | 57 | 131 | 254 | (5:30) Band of Brothers | (:10) Band of Brothers "The Last Patrol" | | (:35) Brothers "Why We Fight" (:55) Band of Brothers "Points" | | (:20) **** Hacksaw Ridge (:16) Andrew Garfield. | | | | | | | | | | |
| COMEDY | 35 | 107 | 249 | Seinfeld | Seinfeld | The Office | The Office | The Office | The Office | The Office | The Office | The Office | The Office | The Office | The Office | South Park | South Park | | |
| COOK | 123 | 113 | 232 | Delicious | Delicious | Bizarre | Bizarre | Delicious | Delicious | Zimmer | Zimmer | Delicious | Delicious | Bizarre | Bizarre | Delicious | Delicious | | |
| DSC | 47 | 182 | 278 | Contraband "The Heat Is On" | Contraband (N) | Contraband "Murky Waters" | | Contraband: Seized at Sea | | Contraband "The Heat Is On" | | Contraband: Seized at Sea | | Contraband "Murky Waters" | | | | | |
| E! | 37 | 114 | 236 | Modern Fam. | Modern Fam. | Modern Fam. | Modern Fam. | Modern Fam. | Modern Fam. | Modern Fam. | Modern Fam. | Modern Fam. | Modern Fam. | Modern Fam. | Modern Fam. | Modern Fam. | Modern Fam. | | |
| ESPN | 27 | 140 | 206 | (5:30) College Football Boston | College at Florida State (N) (Live) | | SportsCenter With Scott Van Pelt (N) (Live) | | SportsCenter (N) (Live) | | SportsCenter (N) (Live) | | SportsCenter (N) (Live) | | SportsCenter (N) (Live) | | | | |
| FOOD | 40 | 110 | 231 | BBQ Brawl | BBQ Brawl "I Do 'Cue" (N) | BBQ Brawl "Mission 'Cue" (N) | | Bobby's Triple Threat | | BBQ Brawl "I Do 'Cue" | | BBQ Brawl "Mission 'Cue" | | Bobby's Triple Threat | | | | | |
| FX | 29 | 136 | 248 | (5:00) *** Doctor Strange in the Multiverse of Madness | *** The Avengers (12) Chris Evans, Mark Ruffalo, Robert Downey Jr.. | | English (P) | | English (N) | | English | | English | | | | | | |
| GALA | 25 | 273 | 404 | Una familia de diez | Nosotros los guapos Vecinos (N) | | 40 y 20 | | 40 y 20 | | Renta | | Renta | | Alma de | | Alma de | | |
| GOLF | 24 | 401 | 218 | Open Epics Tiger's Six-Peat | 2024 TOUR Championship Final Round From East Lake Golf Club in Atlanta. | | Golden Girls | | Golden Girls | | Golden Girls | | Golden Girls | | Golden Girls | | Golden Girls | | |
| HALL | 58 | 185 | 312 | (5:00) * It Was Always You | * Signed, Sealed, Delivered: A Tale of Three Letters (24) | | Golden Girls | | Golden Girls | | Golden Girls | | Golden Girls | | Golden Girls | | Golden Girls | | |
| HGTV | 41 | 112 | 229 | Celebrity IOU | Celebrity IOU (N) | House Hunters (N) | | Hunters | | Hunters | | Celebrity IOU | | Hunters "A Place to Party" | | Hunters | | Hunters | |
| HISTORY | 44 | 120 | 269 | Escapes With Morgan | Escapes With Morgan | (:05) Gangland (:35) Prison | | (:05) Escapes With Morgan | | (:05) Escapes With Morgan | | (:05) Gangland (:35) Prison | | (:05) Escapes With Morgan | | | | | |
| LIFE | 39 | 108 | 252 | Rizzoli & Isles "Love Taps" | Rizzoli & Isles "Sister Sister" | | (:05) Rizzoli & Isles | | (:05) Rizzoli & Isles "5:26" | | Rizzoli & Isles "Love Taps" | | Rizzoli & Isles "Sister Sister" | | (:05) Rizzoli & Isles | | | | |
| LIFEMOV | 119 | 109 | 253 | * Cruise Ship Murder (24) Ryan Carnes, Skye Coyne. | * The Beach House Murders (24) Brittney Dorey. | | * Cruise Ship Murder (24) Ryan Carnes, Skye Coyne. | | * Beach House Murders | | | | | | | | | | |
| NBTV | 273 | 156 | 216 | (5:00) Race for the Cup | NBA TV Marquee Matchup | | NBA TV Marquee Matchup | | NBA TV Marquee Matchup | | NBA TV Marquee Matchup | | NBA TV Marquee Matchup | | Marquee | | | | |
| PAR | 34 | 241 | 241 | Yellowstone | Yellowstone "The Dream Is Not Me" | | Yellowstone | | *** Independence Day (96) Bill Pullman, Jeff Goldblum, Will Smith. | | The Office | | | | | | | | |
| SYFY | 59 | 122 | 244 | (5:00) *** Harry Potter and the Deathly Hallows: Part 1 | (:05) *** Harry Potter and the Deathly Hallows: Part 2 (11) Daniel Radcliffe. | | * Robin Hood (18) Jamie Foxx, Taron Egerton. | | | | | | | | | | | | |
| TBS | 33 | 139 | 247 | Big Bang | Big Bang | Big Bang | Big Bang | American | American | American | American | American | American | American | American | American | American | | |
| TCM | 169 | 132 | 256 | *** A Woman's World (54) June Allyson, Clifton Webb. | *** How to Marry a Millionaire (53) Marilyn Monroe. | | *** Designing Woman (57) Gregory Peck. | | (:15) * Sex & the Single Girl | | | | | | | | | | |
| TLC | 45 | 183 | 280 | 90 Day "Dis)Enchanted" (N) | 90 Day Fiancé: Other (N) | | Welcome to Plathville | | 90 Day "Great Expectations" | | 90 Day "Dis)Enchanted" | | 90 Day Fiancé: Other Way | | Welcome to Plathville | | | | |
| TNT | 32 | 138 | 245 | *** Independence Day (96) Bill Pullman, Jeff Goldblum, Will Smith. | *** 1 Am Number Four (11) Timothy Olyphant, Alex Pettyfer. | | Mysteries of the Unknown (N) | | Mysteries of the Unknown | | Mysteries of the Unknown | | Mysteries of the Unknown | | Mysteries of the Unknown | | | | |
| TRAV | 49 | 196 | 277 | Mysteries of the Unknown (N) | Mysteries of the Unknown | | Mysteries of the Unknown | | Mysteries of the Unknown | | Mysteries of the Unknown | | Mysteries of the Unknown | | Mysteries of the Unknown | | | | |
| TRU TV | 30 | 242 | 246 | (5:00) *** He Got Game (98) | (:45) Football Texas A&M-Commerce at San Diego State | | (:45) *** He Got Game (98) Ray Allen, Milla Jovovich, Denzel Washington. | | Imp. Jokers | | | | | | | | | | |
| USA | 31 | 105 | 242 | WWE Monday Night RAW (N) (Live) | The Anonymous (N) | | 9-1-1 "Home Invasion" | | 9-1-1 "Tomorrow" | | The Anonymous | | | | | | | | |

tonight's picks



Matt Iseman co-hosts "American Ninja Warrior"

**The Chicano Squad
A&E 7 p.m.**

In the first installment of this two-night event, hear how six officers were selected to form an all-Latino homicide unit in Houston during the late 70s. With a rising murder rate in the Latin community, the men were given 90 days to solve open crimes.

**Below Deck Mediterranean
BRAVO 7 p.m.**

When a newly-hired steward arrives, it causes a flurry of mixed reactions from the staff. Then, Aesha's stress spikes

when she finds the laundry room is a disaster zone. And, bad news from home shocks a deckhand, leaving their position in doubt.

**Name That Tune
KFOX 7 p.m.**

Be it swan songs, solos or summertime hits, how well do you know your music? In this game show, host Jane Krakowski welcomes players to face off against each other, testing their encyclopedic knowledge of music as they fight for a spot in the bonus round.

**American Ninja Warrior
KTSM 7 p.m.**

As the national finals continue in Las Vegas, the remaining ninjas prepare to compete in Stages 2 and 3 of this super-sized competition. Each competitor is eager to show their strengths for a chance to win a \$1 million prize and the "ANW" title.

**61st Street
KVIA2 8 p.m.**

As Season 2 continues, Franklin (Courtney B. Vance) finds himself armed with a secret piece of evidence that makes it easy to put Officer Logan's

(Mark O'Brien) comrades on the stand. Meanwhile, Norma (Andrene Ward-Hammond) has an important visitor.

**Transformers
PARSHO 9 p.m.**

The fate of humanity is at stake when two races of robots, the good Autobots and the villainous Decepticons, bring their war to Earth. The robots have the ability to change into different mechanical objects as they seek the key to ultimate power. Only a human youth, Sam Witwicky (Shia LaBeouf) can save the world from total destruction.

EXPERIENCE SOUTHERN NEW MEXICO
DESERT exposure
Monthly in Southern New Mexico:
"The biggest little newspaper in the Southwest"
www.desertexposure.com

Always at your fingertips!
No login. No fees.
Check out the entire Bulletin in our weekly e-edition.
THE LAS CRUCES **Bulletin**
www.lascrucesbulletin.com

TUESDAY EVENING

S - Spectrum D - Dish DTV - DirecTV

MOVIES

SPORTS

SPECIALS

SEPTEMBER 3, 2024

| | S | D | DTV | 6 PM | 6:30 | 7 PM | 7:30 | 8 PM | 8:30 | 9 PM | 9:30 | 10 PM | 10:30 | 11 PM | 11:30 | 12 AM | 12:30 |
|-----------|-----|-----|-----|--|--|--|----------------------------------|---|---|---------------|---------------|---|------------------------------|----------------------------------|----------------------------------|--------------------------|---------------|
| PBS-KRWG | 2 | 22 | 22 | (5:30) PBSNews Context | | Classical Rewind (My Music Presents) | | Revival 69: The Concert That Rocked the World ('22) | | | | Bruce Springsteen's Nebraska: Cele | | | | PBS News Hour | |
| CBS-KDBC | 3 | 4 | 4 | Jeopardy! | Wheel | FBI | | FBI: International "Andiamo!" | FBI-Wanted "Rendition" | | | CBS4 News | (:35) Late Show-Colbert (N) | (:35) After Midnight (N) | | (:35) Paid Prog. | |
| ABC-KVIA | 7 | 7 | 7 | News (N) | ET (N) | The Bachelorette "Finale and After the Final Rose" (N) (SF) | | | | | | News (N) | (:35) Jimmy Kimmel Live! (N) | (:35) Nightline | (:05) ET | (:35) Hollywood | |
| FOX-KFOX | 8 | 14 | 14 | Big Bang | Big Bang | Beat Shazam (N) | | The Quiz With Balls (N) (SF) | KFOX14 News at Nine (N) | | | (:05) Mod Fam | (:35) Mod Fam | (:05) iCRIME | (:35) Simpsons | (:05) Two Men | (:35) Two Men |
| NBC-KTSM | 9 | 9 | 9 | KTSM 9 News at 6 (N) | | America's Got Talent "Quarterfinals 4" (N) | | | Password | | | KTSM News | (:35) Tonight Show (N) | (:35) Seth Meyers (N) | | (:35) Friends | |
| UNI-KINT | 10 | - | 26 | La rosa de Guadalupe | | Golpe de suerte (N) | | Marea de pasiones (N) | Ellas soy yo Gloria Trevi (N) | | | Noticias 26 | SaborDe | Deportivo (N) (Live) | | Marea de pasiones | |
| TEL-KTDO | 11 | 48 | 48 | La isla desafio extremo | | | | | El Conde: "Una bonita pareja" | | | Noticiero | (:35) Noticias | Acércate a Rocio | | Caso cerrado | |
| UMAS-KTFN | 13 | 759 | 65 | (5:00) Enamor (N) (Live) | | MLB en vivo (N) (Live) | | | Pablo Escobar (N) | | | Como dice el dicho | | Pablo Escobar | | Nosotr. | Nosotr. |
| CW-KVIA2 | 14 | 17 | 8 | Sheldon | Sheldon | The Conners | The Conners | The Conners | Seinfeld | Seinfeld | | Sheldon | Pictionary | GMFB: Overtime (N) | | Pawn Stars | Storage Wars |
| A&E | 43 | 118 | 265 | (5:00) Squad "Part 1" | | The Chicano Squad "Part 2" (N) | | | (:05) The Chicano Squad "Part 1" | | | | | (:05) The Chicano Squad "Part 2" | | | |
| AMC | 57 | 131 | 254 | *** The Replacements Gene Hackman, Orlando Jones, Keanu Reeves. | | | | (:45) *** Friday Night Lights ('04) Derek Luke, Billy Bob Thornton. | | | | (:15) Snowpiercer | | (:20) Walk:Dead "Lockdown" | | | |
| COMEDY | 35 | 107 | 249 | Seinfeld | Seinfeld | The Office | The Office | The Office | The Office | The Office | The Office | The Office | The Office | The Office | The Office | South Park | South Park |
| COOK | 123 | 113 | 232 | Man v. Food | Man v. Food | Man- Food | Man- Food | No Reservation "Laos" | No Reservation "Mexico" | | | Man v. Food | Man v. Food | Man- Food | Man- Food | No Reservation "Laos" | |
| DSC | 47 | 182 | 278 | Deadliest Catch (N) | | | | Bering Sea Gold | Contraband: Seized at Sea | | | Deadliest Catch | | | | Bering Sea Gold | |
| E! | 37 | 114 | 236 | Modern Fam. | Modern Fam. | Modern Fam. | Modern Fam. | Modern Fam. | Modern Fam. | Modern Fam. | Modern Fam. | Modern Fam. | Modern Fam. | Modern Fam. | Modern Fam. | E! News (N) | Modern Fam. |
| ESPN | 27 | 140 | 206 | (5:00) 2024 US Open Tennis Quarterfinals (N) (Live) | | | | | SportsCenter (N) (Live) | | | SportsCenter (N) (Live) | | SportsCenter (N) (Live) | | SportsCenter (N) (Live) | |
| FOOD | 40 | 110 | 231 | Chopped (N) | | Bobby's Triple Threat (N) | | Bobby's Triple Threat | Chopped "Sexy Feast" | | | Bobby's Triple Threat | | Bobby's Triple Threat | | Chopped "Sexy Feast" | |
| FX | 29 | 136 | 248 | (5:00) *** Iron Man 2 ('10) | | *** Iron Man 3 ('13) Gwyneth Paltrow, Don Cheadle, Robert Downey Jr.. | | | *** Thor ('11) Natalie Portman, Anthony Hopkins, Chris Hemsworth. | | | | | | | | |
| GALA | 25 | 273 | 404 | Una familia de diez | | Nosotros los guapos | | Vecinos (N) | 40 y 20 | 40 y 20 | | Renta | Renta | Alma de | Alma de | Simón dice | Simón dice |
| GOLF | 24 | 401 | 218 | (5:30) 2023 Solheim Cup Golf | | Final Day Professional women golfers compete to win on the final day of the 2023 Solheim Cup | | | Golf. | | | The Golf Fix | Breaking | Breaking | PGA TOUR | Golf | |
| HALL | 58 | 185 | 312 | (5:00) Falling for Vermont | | Field Day ('23) Ben Ayers, Rachel Boston. | | | Golden Girls | Golden Girls | | Golden Girls | Golden Girls | Golden Girls | Golden Girls | Golden Girls | Golden Girls |
| HGTV | 41 | 112 | 229 | 100 Day Hotel Challenge (N) | | Divided "High Standards" (N) | Hunt Intl (N) | Hunters Int'l | Hunters Int'l | Hunters Int'l | Hunters Int'l | Divided "High Standards" | Hunters Int'l | Hunters Int'l | Hunters Int'l | Hunters Int'l | Hunters Int'l |
| HISTORY | 44 | 120 | 269 | Aliens "The Disclosure Event" | | Ancient Aliens | (:05) Aliens "Destination Chile" | (:05) Ancient Aliens | (:05) Ancient Aliens | | | (:05) Ancient Aliens | (:05) Ancient Aliens | (:05) Ancient Aliens | (:05) Aliens "Destination Chile" | | |
| LIFE | 39 | 108 | 252 | Castle "Kick the Ballistics" | | Castle "Eye of the Beholder" | (:05) Castle "Demons" | (:05) Castle "Cops & Robbers" | Castle "Kick the Ballistics" | | | Castle "Eye of the Beholder" | | Castle "Eye of the Beholder" | (:05) Castle "Demons" | | |
| LIFEMOV | 119 | 109 | 253 | The Hillsdale Adoption Scam ('23) Keshia Knight Pulliam. | | The Pregnancy Promise ('23) Alexandra Swanbeck. | | | The Hillsdale Adoption Scam ('23) Keshia Knight Pulliam. | | | The Pregnancy Promise | | The Pregnancy Promise | | | |
| NBTV | 273 | 156 | 216 | NBA Playoff Playback | | WNBA Basketball Chicago Sky at Las Vegas Aces (N) (Live) | | WNBA Basketball Indiana Fever at Dallas Wings | | | | WNBA Basketball Indiana Fever at Dallas Wings | | NBA TV Marquee Matchup | | | |
| PAR | 34 | 241 | 241 | *** Independence Day ('96) Bill Pullman, Jeff Goldblum, Will Smith. | | *** Jack Reacher ('12) Rosamund Pike, Robert Duvall, Tom Cruise. | | | *** First Blood ('82) | | | | | | | | |
| SYFY | 59 | 122 | 244 | (5:45) *** The Mummy ('99) Rachel Weisz, John Hannah, Brendan Fraser. | | *** The Mummy Returns ('01) Rachel Weisz, John Hannah, Brendan Fraser. | | | *** The Grudge ('04) Sarah Michelle Gellar. | | | | | | | | |
| TBS | 33 | 139 | 247 | (5:00) Baseball Boston Red Sox at New York Mets (N) (Live) | | MLB Close | | On Base with | Modern Fam. | Modern Fam. | Modern Fam. | Modern Fam. | Modern Fam. | Modern Fam. | Modern Fam. | Modern Fam. | Modern Fam. |
| TCM | 169 | 132 | 256 | *** Bigger Than Life ('56) James Mason. | (:45) *** The World in My Corner ('56) Audie Murphy. | | | *** It Came From Outer Space ('53) | | | | *** The Young Philadelphians ('59) Paul Newman. | | | | | |
| TLC | 45 | 183 | 280 | My Big Fat Fabulous Life (N) | Fabulous "Higher Love" (N) | Welcome to Plathville (N) | | 90 Day Fiance: Other Way | My Big Fat Fabulous Life | | | Fat Fabulous "Higher Love" | | Welcome to Plathville | | | |
| TNT | 32 | 138 | 245 | *** Guardians of the Galaxy Vol. 2 ('17) Zoe Saldana, Bradley Cooper, Chris Pratt. | | *** Thor: Ragnarok ('17) Tom Hiddleston, Chris Hemsworth. | | (:45) *** Edge of Tomorrow ('14) | | | | | | | | | |
| TRAV | 49 | 196 | 277 | Kindred "Devil in Salem" | | Kindred Spirits "Fright Train" | | Kindred "Hidden Passage" | Kindred Spirits "Sea Witch" | | | Kindred "Devil in Salem" | | Kindred Spirits "Fright Train" | | Kindred "Hidden Passage" | |
| TRU TV | 30 | 242 | 246 | No Gamble, No Future | | No Gamble, No Future | | *** Doctor Strange ('16) Chiwetel Ejiofor, Benedict Cumberbatch. | | | | *** Hancock ('08) Charlize Theron, Will Smith. | | | | Imp. Jokers | |
| USA | 31 | 105 | 242 | WWE NXT (N) (Live) | | (:10) *** The Blind Side ('09) Tim McGraw, Quinton Aaron, Sandra Bullock. | | | The Anonymous | | | | | Law-SVU "Chasing Theo" | | | |

tonight's picks



Jenn Tran in "The Bachelorette"

100 Day Hotel Challenge
HGTV 6 p.m.

Brian and Mika are working hard on their respective hotels, but both hotels are still lacking key details. Nevertheless, they're taking the competition outdoors, where they'll spend a lot of cash to bring resort-style amenities to the outdoor lounges.

Beat Shazam
KFOX 7 p.m.

Teams of two race against the clock and each other as they try to identify hit songs.

The team with the most money banked at the end of four rounds will go against Shazam, the popular song identification app, for the chance to win up to \$1 million.

The Bachelorette
KVIA 7 p.m.

Bachelorette Jenn Tran is about to make the decision of a lifetime in this season finale. From the Big Island of Hawaii, Jenn must see where her heart leads her as she pick between her final two guys. Are either of these guys good enough for Jenn?

Your investing needs today may look different tomorrow.



Talk to Jackie Edwards, your Branch Leader and Financial Consultant here in Las Cruces. | 575-993-5050
schwab.com/lascruces



Own your tomorrow.

© 2023 Charles Schwab & Co., Inc. ("Schwab")
Member SIPC. All rights reserved. (1120-0JP6) SCH11373-27 (09/23)

FARMERS & CRAFTS MARKET
OF LAS CRUCES, INC.
MAIN STREET DOWNTOWN
www.fcmlinc.org

The Farmers & Crafts Market of LC

Open Saturdays
8:30 AM - 1:00 PM

Open Wednesdays
8:30 AM - 1:00 PM

New Vendor Intake
contact the office at
fcmlinc@gmail.com
for more information

What's Available **NOW** On **NETFLIX**



“Outlast” - Season 2 (Sept. 4)

In this raw survival competition series, 16 lone wolf experts are dropped in the Alaskan wilderness and must outlast each other in a battle for a million dollar

payout. There's only one rule in this cut throat game: they must be a part of one of four teams to win.



“The Perfect Couple” (Sept. 5)

Amelia Sacks (Eve Hewson) is about to marry into one of the wealthiest families on Nantucket Island. Her disapproving future mother-in-law, famous novelist Greer Garrison Winbury (Nicole Kidman), has spared no expense in planning what promises to be the premiere wedding of the season — until a body turns up on the beach. As secrets

come to light, the stage is set for a real-life investigation that feels plucked from the pages of one of Greer's novels. Suddenly, everyone is a suspect.



“Rebel Ridge” (Sept. 6)

Ex-Marine Terry Richmond (Aaron Pierre) grapples his way through a web of small-town corruption when an attempt to post bail for his cousin escalates into a violent standoff with the local police chief (Don Johnson). AnnaSophia Robb co-stars.



“Selling Sunset” - Season 6 (Sept. 6)

The realtors of The Oppenheim Group return for an explosive eighth season with over-the-top listings and high stakes drama as they navigate love, betrayal and loyalty both inside and outside the brokerage. Chrishell Stause, Mary Fitzgerald, Emma Hernan, Amanza Smith, Chelsea Lazkani, Bre Tiesi, and Nicole Young are all back and working under the watchful eyes of bosses Jason and Brett Oppenheim. But no one should get too comfortable — some fresh faces, including new agent Alanna Whittaker.

For daily news updates

Subscribe to our

eBulletin



Check out the entire Bulletin in our weekly e-edition.

www.lascrucesbulletin.com

infocus

“My Brilliant Friend” - Season 4 (Max — Sept. 9, Season Premiere)

Exploring the tale of Elena Greco (Margherita Mazzucco) and the most important friend in her life. She met Raffaella Cerullo (Gaia Girace), whom she has always called Lila, in the first year of primary school in 1950. Set in a dangerous and fascinating Naples, Italy, their story goes on to cover more than 60 years of their lives and explores the mystery of Lila, Elena's brilliant friend and — in a way — both her best friend and her worst enemy.



“The Old Man” - Season 2 (Hulu — Sept. 13, Season Premiere)

In Season 2, former CIA agent Dan Chase (Jeff Bridges) and former FBI Assistant Director Harold Harper (John Lithgow) set off on their most important mission to date — to recover Emily Chase (Alia Shawkat) after she is kidnapped by Faraz Hamzad (Navid Negahban), a powerful Afghan tribal leader. With all three men claiming her as their daughter, Emily finds herself in an identity crisis that has dire implications.



JJ JIMMY JOHN'S

Celebrating

10 YEARS IN LAS CRUCES

★ LOCALLY OWNED & OPERATED ★

BRING CARD IN TO GET 10% OFF!!!

HOME OF THE \$5 PRE-ROLL

FIRST TIME CUSTOMERS GET A PENNY PRE-ROLL WITH FIRST PURCHASE!

DAILY SPECIALS!

MONDAY: 10% OFF MEDICAL MENU

TUESDAY: 10% OFF REC. EDIBLES

WEDNESDAY: 10% OFF CONCENTRATES/INFUSED PRODUCTS

THURSDAY: 10% OFF VAPES and CARTS

FRIDAY: 10% OFF ALL FLOWER and PRE_ROLLS

SATURDAY: 10% OFF TOPICALS

SUNDAY: 10% OFF EVERYTHING

**BRING A FRIEND IN AND
GET A PENNY PRE-ROLL!**

162 Wyatt Dr.
Las Cruces, NM
88005

**NMSU Students get
10% OFF ANYTIME**

(575) 259-4089
M-Sat. 9 - 6:30PM
Sun. 11 - 4PM

Please Consume Responsibly: For use only by adults 21 and older. Keep out of reach of children. This product is not approved by the FDA to treat, cure, or prevent any disease. FDA has not evaluated this product for safety, effectiveness, and quality. Do not drive a motor vehicle or operate machinery while under the influence of cannabis. There may be long term adverse health effects from consumption of cannabis, including additional risks for women who are or may become pregnant or are breastfeeding.

WEDNESDAY EVENING

S - Spectrum D - Dish DTV - DirecTV

MOVIES

SPORTS

SPECIALS

SEPTEMBER 4, 2024

| | S | D | DTV | 6 PM | 6:30 | 7 PM | 7:30 | 8 PM | 8:30 | 9 PM | 9:30 | 10 PM | 10:30 | 11 PM | 11:30 | 12 AM | 12:30 |
|-----------|-----|-----|-----|--|-------------|--|-------------|---|--|---|-----------------|---|---|---|--------------------|----------------------------------|---------------|
| PBS-KRWG | 2 | 22 | 22 | (5:30) PBSNews | Context | Nature "Saving the Animals of Ukraine" | | NOVA "The Planets: Jupiter" | | | | Brothers Celebrating The Allman | | | | PBS News Hour | |
| CBS-KDBC | 3 | 4 | 4 | Jeopardy! | Wheel | Big Brother (N) | | The Real CSI: Miami (N) (SF) | | Real CSI "Halliburton Horror" | | CBS4 News | (:35) Late Show-Colbert (N) | (:35) After Midnight (N) | | (:35) Paid Prog. | |
| ABC-KVIA | 7 | 7 | 7 | News (N) | ET (N) | Who Wants to Be | | Claim to Fame | | Shark Tank | | News (N) | (:35) Jimmy Kimmel Live! (N) | (:35) Nightline | (:05) ET | (:35) Hollywood | |
| FOX-KFOX | 8 | 14 | 14 | Big Bang | Big Bang | MasterChef "Feel the Burn - Mystery Box; The Wall" (N) | | KFOX14 News at Nine (N) | | | | (:05) Mod Fam | (:35) Mod Fam | (:05) iCRIME | (:35) Simpsons | (:05) Two Men | (:35) Two Men |
| NBC-KTSM | 9 | 9 | 9 | KTSM 9 News at 6 (N) | | America's Got Talent (N) | | NFL Kickoff Eve (N) (Live) | | Chicago P.D. | | KTSM News | (:35) Tonight Show (N) | (:35) Seth Meyers (N) | | (:35) Friends | |
| UNI-KINT | 10 | - | 26 | Rosa "Corazón perdido" | | Golpe de suerte (N) | | Marea de pasiones (N) | | Ellas soy yo Gloria Trevi (N) | | Noticias 26 | SaborDe | Deportivo (N) (Live) | | Marea de pasiones | |
| TEL-KTDO | 11 | 48 | 48 | La isla desafío extremo | | | | | | El Conde: "Una bonita pareja" | | Noticiero | (:35) Noticias | Acércate a Rocío | | Caso cerrado | |
| UMAS-KTFN | 13 | 759 | 65 | Amor prohibido (N) | | Enamorándonos (N) (Live) | | | | Pablo Escobar (N) | | Como dice el dicho | | Pablo Escobar | | Amor prohibido | |
| CW-KVIA2 | 14 | 17 | 8 | Sheldon | Sheldon | Sullivan's "Second Chances" | | Police "Outrunning the Law" | | Seinfeld | Seinfeld | Sheldon | Pictionary | GMFB: Overtime (N) | | Pawn Stars | Storage Wars |
| A&E | 43 | 118 | 265 | Court Cam | Court Cam | Court Cam | Court Cam | To Be | To Be | (:05) Court Cam | (:35) Court Cam | (:05) Court Cam | (:35) Court Cam | (:05) Court Cam | (:35) Court Cam | (:05) To Be | (:35) To Be |
| AMC | 57 | 131 | 254 | (5:00) **** The Matrix (99) | | Keanu Reeves. | | *** The Matrix Revolutions | (03) Laurence Fishburne, Carrie-Anne Moss, Keanu Reeves. | | | | | **** The Matrix Reloaded | (03) Keanu Reeves. | | |
| COMEDY | 35 | 107 | 249 | Seinfeld | Seinfeld | Seinfeld | Seinfeld | Seinfeld | Seinfeld | Seinfeld | Seinfeld | Seinfeld | Seinfeld | Seinfeld | Seinfeld | South Park | South Park |
| COOK | 123 | 113 | 232 | Halloween Wars | | Halloween "Scary Tales" | | Halloween Wars | | Halloween "Underworld" | | Halloween Wars | | Halloween "Scary Tales" | | Halloween Wars | |
| DSC | 47 | 182 | 278 | Expedition X | | Expedition X (N) | | Bigfoot "Primal Fear" (N) | | Mysteries of (N) | | Expedition X | | Expedition X | | Bigfoot "Primal Fear" | |
| E! | 37 | 114 | 236 | Modern Fam. | Modern Fam. | Modern Fam. | Modern Fam. | Modern Fam. | Modern Fam. | Modern Fam. | Modern Fam. | Modern Fam. | Modern Fam. | Modern Fam. | Modern Fam. | Modern Fam. | Modern Fam. |
| ESPN | 27 | 140 | 206 | (5:00) 2024 US Open Tennis | | Quarterfinals (N) (Live) | | | | SportsCenter (N) (Live) | | SportsCenter (N) (Live) | | SportsCenter (N) (Live) | | SportsCenter (N) (Live) | |
| FOOD | 40 | 110 | 231 | Grocery "Battle of the Bacon" | | Guy's Grocery Games (N) | | Guy's Grocery Games | | Guy's Grocery Games | | Guy's Grocery Games | | Guy's Grocery Games | | Guy's Grocery Games | |
| FX | 29 | 136 | 248 | (5:30) *** Uncharted (22) | | Mark Wahlberg, Tom Holland. | | *** Jurassic World: Fallen Kingdom (18) | | Bryce Dallas Howard, Chris Pratt. | | *** Jurassic World: Fallen Kingdom (18) | | Chris Pratt. | | | |
| GALA | 25 | 273 | 404 | Una familia de diez | | Nosotros los guapos | | Vecinos (N) | | 40 y 20 | 40 y 20 | Renta | Renta | Alma de | Alma de | Simón dice | Simón dice |
| GOLF | 24 | 401 | 218 | The Greatest Solheim Cup | | | | The Greatest Solheim Cup | | | | Asian Tour Golf | The 40th Shinhan Donghae Open, First Round (N) (Live) | | | | |
| HALL | 58 | 185 | 312 | (5:00) * Romance in Style | | * Head Over Heels (24) Olivier Renaud, Rebecca Dalton. | | Golden Girls | Golden Girls | Golden Girls | Golden Girls | Golden Girls | Golden Girls | Golden Girls | Golden Girls | Golden Girls | Golden Girls |
| HGTV | 41 | 112 | 229 | Unsellable Houses (N) | | Bargain Block (N) (SP) | | House (N) | Hunters | Hunters | Hunters | Bargain Block | | House | Hunters | Hunters | Hunters |
| HISTORY | 44 | 120 | 269 | Pawn Stars | | Pawn Stars (N) | | (:05) Pawn Stars: Best Of (N) | | (:05) Pawn Stars | | (:05) Pawn Stars | | (:05) Pawn Stars: Best Of | | (:05) Pawn Stars | |
| LIFE | 39 | 108 | 252 | Castle "Till Death Do Us Part" | | Castle "Dial M for Mayor" | | (:05) Castle | | (:05) Castle | | Castle "Till Death Do Us Part" | | Castle "Dial M for Mayor" | | (:05) Castle | |
| LIFEMOV | 119 | 109 | 253 | * A Chef's Deadly Revenge (24) | | Kathryn Kohut. (P) | | * Revenge for My Mother (22) | | Sami Nye. | | * A Chef's Deadly Revenge (24) | | Kathryn Kohut. | | * Revenge for My Mother | |
| NBTV | 273 | 156 | 216 | Everything But the Chip: The 2001 76ers | | NBA 75 | | Basketball | | | | Basketball Stories | | Everything But the Chip: The 2001 76ers | | Basketball | |
| PAR | 34 | 241 | 241 | *** Jack Reacher (12) | | Rosamund Pike, Robert Duvall, Tom Cruise. | | *** The Equalizer (14) | | Marton Csokas, Chloë Grace Moretz, Denzel Washington. | | *** Top Gun (86) | | | | | |
| SYFY | 59 | 122 | 244 | (5:15) *** The Mummy Returns (01) | | Brendan Fraser. | | The Ark (N) | | *** The Scorpion King (02) | | Dwayne Johnson. | | *** Leprechaun (93) | | Jennifer Aniston, Warwick Davis. | |
| TBS | 33 | 139 | 247 | All Elite Wrestling: Dynamite (N) (Live) | | | | Modern Fam. | Modern Fam. | Modern Fam. | Modern Fam. | Modern Fam. | Modern Fam. | Modern Fam. | Modern Fam. | Modern Fam. | Modern Fam. |
| TCM | 169 | 132 | 256 | ***** The Thin Man (34) | | William Powell. (:45) ***** Lady Killer (33) | | James Cagney. (:15) *** Christopher Strong (33) | | | | (:45) ***** Bombshell (33) | | Lee Tracy, Jean Harlow. | | Movie | |
| TLC | 45 | 183 | 280 | My 600-Lb. Life "Abi's Journey" | | | | My 600-Lb. Life "Rose's Journey" | | | | My 600-Lb. Life "Abi's Journey" | | | | My 600-Lb "Rose's Journey" | |
| TNT | 32 | 138 | 245 | ***** Thor: Ragnarok (17) | | Tom Hiddleston, Chris Hemsworth. | | (:45) *** The Meg (18) | | Li Bingbing, Rainn Wilson, Jason Statham. | | NCIS: N.O. "Hard Knock Life" | | NCIS: N.O. "Mirror, Mirror" | | | |
| TRAV | 49 | 196 | 277 | Paranormal Caught on Cam. | | Paranormal Caught on Cam. | | Paranormal Caught on Cam. | | Paranormal Caught on Cam. | | Paranormal Caught on Cam. | | Paranormal Caught on Cam. | | Paranormal Caught on Cam. | |
| TRU TV | 30 | 242 | 246 | Wipeout "Wipe-pedia Vol.1" | | Wipeout "Get Ship Faced" | | *** Hancock (08) | | Charlize Theron, Will Smith. | | ***** Men in Black (97) | | Will Smith, Tommy Lee Jones. | | Imp. Jokers | Imp. Jokers |
| USA | 31 | 105 | 242 | Law-SVU "Gone Fishin" | | Law & Order: SVU "Mood" | | Law-SVU "Contrapasso" | | Law-SVU "No Good Reason" | | The Anonymous | | Law-SVU "Presumed Guilty" | | Law-SVU "Real Fake News" | |

tonight's picks



Tracy Tutor stars in "Million Dollar Listing Los Angeles"

The Challenge MTV 6 p.m.

Things get interesting when new targets fundamentally change the game, leaving competitors to wonder if they'll be safe from elimination or not. Then, a "Challenge" history lesson brings a smile to TJ, while a sudden death round brings questions.

Dateline: Secrets Uncovered
OXYGEN 6 p.m.

Journalist Craig Melvin takes a second look at some of the most mysterious cases in recent history through firsthand accounts of people close to the crime, including investigators who looked into the cases and family members who are still trying to cope.

Million Dollar Listing
Los Angeles
BRAVO 7 p.m.

Realtors Josh Flagg, Josh Altman and Tracy Tutor are back for a new episode of ups and downs in the tumultuous Los Angeles real estate scene. This time, the realtors discover that splurging on a luxury property might not be the best choice.

Guy's Grocery Games FOOD 7 p.m.

The All-Star Relay Rumble begins tonight, as "Tournament of Champions" winners take on some culinary giant slayers in a masterful showdown. During 10-minute tag-team shifts, the teammates must create a sweet and savory duo made with some key ingredients.

Pawn Stars
HISTORY 7 p.m.

Cowabunga! Just what is a 1991 Teenage Mutant Ninja Turtles action figure prototype worth? Then, Rick tries to pull the trigger on a 1800s man-stopper pistol at the shooting range. Later on, Rick uses his psychic abilities on a 1966 Kreskin ESP board game.

Bargain Block
HGTV 7 p.m.

Keith and Evan are known for making dreams come true. So, when they're asked to play fairy godmother and recreate a Cinderella story for the ages, they jump in, roll up their sleeves and turn a train wreck of a house into a home worthy of a fairy tale.

Imaginary STARZ 7 p.m.

When Jessica (DeWanda Wise) moves back into her childhood home with her family, her youngest step-daughter, Alice (Pyper Braun), finds Chauncey, Jessica's old stuffed bear that's very upset over being abandoned. Who knew Fuzzy-Wuzzy was a killer?

The Real CSI: Miami
KDBC 8 p.m.

Highlighting victims' families as they search for justice (and the forensic science used to solve cases), this brand-new installment focuses on the 1990 investigation into Florida's "Killer Clown," who shot Marlene Warren to death at her own front door.

Wayne Brady: The Family Remix
FREE 11 p.m.

Wayne Brady is as busy as ever. Thankfully, his support system — namely his blended family — is a close-knit group who keeps the multi-hyphenate grounded. While Brady has taken steps to define his personal truth, the family is always looking out for him.

THURSDAY EVENING

S - Spectrum D - Dish DTV - DirecTV

MOVIES

SPORTS

SPECIALS

SEPTEMBER 5, 2024

| | S | D | DTV | 6 PM | 6:30 | 7 PM | 7:30 | 8 PM | 8:30 | 9 PM | 9:30 | 10 PM | 10:30 | 11 PM | 11:30 | 12 AM | 12:30 |
|-----------|-----|-----|-----|--|---|--|-----------------------------------|---|---|--|------------------|------------------------------|--------------------------|---------------------------------|-----------------|---------------|---------------|
| PBS-KRWG | 2 | 22 | 22 | (5:30) PBSNews Context | | Best of Festival | | | | | | | | | | | PBS News Hour |
| CBS-KDBC | 3 | 4 | 4 | Jeopardy! | Wheel | Big Brother (N) | | Sheldon | Ghosts | Fire "Something's Coming" | CBS4 News | (:35) Late Show-Colbert (N) | (:35) After Midnight (N) | (:35) Paid Prog. | | | |
| ABC-KVIA | 7 | 7 | 7 | News (N) | ET (N) | Press-Luck "The Challenger!" | Lucky 13 (N) | | Who Wants to Be | | News (N) | (:35) Jimmy Kimmel Live! (N) | (:35) Nightline | (:05) ET | (:35) Hollywood | | |
| FOX-KFOX | 8 | 14 | 14 | Big Bang | Big Bang | MasterChef "Tag Team; Storm's a Brewin" | | | KFOX14 News at Nine (N) | (:05) Mod Fam | (:35) Mod Fam | (:05) iCRIME | (:35) Simpsons | (:05) Two Men | (:35) Two Men | | |
| NBC-KTSM | 9 | 9 | 9 | (:15) NFL Football Baltimore Ravens at Kansas City Chiefs (N) (Live) | | | | | | KTSM 9 News (N) | | (:35) Tonight Show (N) | (:35) Seth Meyers (N) | (:35) Friends | | | |
| UNI-KINT | 10 | - | 26 | La rosa de Guadalupe (N) | Golpe de suerte (N) | Marea de pasiones (N) | | Ellas soy yo Gloria Trevi (N) | | Noticias 26 | SaborDe | Deportivo (N) (Live) | | Marea de pasiones | | | |
| TEL-KTDO | 11 | 48 | 48 | (5:00) Noticiero Telemundo | Football (N) (:20) Fútbol NFL | Kansas City Chiefs vs. Baltimore Ravens (N) (Live) | | | | Noticiero Telemundo 48 El Paso a las 4pm | Noticias | (:05) Noticias | Acércate a | | | | |
| UMAS-KTFN | 13 | 759 | 65 | Amor prohibido (N) | Enamorándonos (N) (Live) | | | Pablo Escobar (N) | | Como dice el dicho | Pablo Escobar | | Amor prohibido | | | | |
| CW-KVIA2 | 14 | 17 | 8 | Sheldon | Sheldon | Penn & Teller: Fool Us | Animals (N) | Funny Kids | Seinfeld | Seinfeld | Sheldon | Pictionary | GMFB: Overtime (N) | Pawn Stars | Storage Wars | | |
| A&E | 43 | 118 | 265 | The First 48 "The Invader" | The First 48 | The First 48 "Crossroads" | (:05) First 48 "Cruel Intentions" | (:05) First 48 "The Invader" | (:05) The First 48 | (:05) First 48 "Crossroads" | | | | | | | |
| AMC | 57 | 131 | 254 | *** Twister '96) Bill Paxton, Cary Elwes, Helen Hunt. | | *** The Perfect Storm Mark Wahlberg, John C. Reilly, George Clooney. | | | | The Walking Dead "Faith" | (:35) Walk:Dead | | | | | | |
| COMEDY | 35 | 107 | 249 | Seinfeld | Seinfeld | The Office | The Office | The Office | The Office | The Office | The Office | The Office | The Office | South Park | South Park | | |
| COOK | 123 | 113 | 232 | Carnival Eats | Carnival Eats | Carnival Eats | Carnival Eats | Delicious | Delicious | Delicious | Carnival Eats | Carnival Eats | Carnival Eats | Carnival Eats | Delicious | Delicious | |
| DSC | 47 | 182 | 278 | Homestead Rescue "Bone Dry in Big Sky" | | Homestead Rescue "No Place Like Dome" | | | | Homestead Rescue "Marsh Madness" | | | | Homestead Rescue | | | |
| E! | 37 | 114 | 236 | *** Austin Powers: International Man of Mystery '97) | | *** Austin Powers: The Spy Who Shagged Me '99) | | *** Austin Powers in Goldmember '02) Mike Myers. | | E! News (N) | Modern Fam. | | | | | | |
| ESPN | 27 | 140 | 206 | (5:00) 2024 US Open Tennis Women's Semifinals (N) (Live) | | SportsCenter (N) (Live) | | SportsCenter (N) (Live) | | SportsCenter (N) (Live) | | | | SportsCenter (N) (Live) | | | |
| FOOD | 40 | 110 | 231 | Beat Bobby | Beat Bobby | Beat Bobby | Beat Bobby | Beat Bobby | Beat Bobby | Beat Bobby | Beat Bobby | Beat Bobby | Beat Bobby | Beat Bobby | Beat Bobby | Beat Bobby | |
| FX | 29 | 136 | 248 | (4:00) ♀ Live Free or Die Hard | *** A Good Day to Die Hard '13) Bruce Willis. | | | *** Mission: Impossible -- | | Ghost Protocol '11) Jeremy Renner, Tom Cruise. | | | | ♀ Mission: Impossible -- Gho... | | | |
| GALA | 25 | 273 | 404 | Una familia de diez | Nosotros los guapos | Vecinos (N) | | 40 y 20 | 40 y 20 | Renta | Renta | Alma de | Alma de | Simón dice | Simón dice | | |
| GOLF | 24 | 401 | 218 | (3:00) Golf DP World Tour | Golf Omega European Masters, First Round | | | | | Asian Tour Golf The 40th Shinhan Donghae Open, Second Round (N) (Live) | | | | | | | |
| HALL | 58 | 185 | 312 | (5:00) ♀ Falling in Love in Niag... | ♀ Groundswell '22) Ektor Rivera, Lacey Chabert. | | | Golden Girls | Golden Girls | Golden Girls | Golden Girls | Golden Girls | Golden Girls | Golden Girls | Golden Girls | Golden Girls | |
| HGTV | 41 | 112 | 229 | Hunters Int'l | Hunters Int'l | Hunters Int'l | Hunters Int'l | Hunters Int'l | Hunters Int'l | Hunters Int'l | Hunters Int'l | Hunters Int'l | Hunters Int'l | Hunters Int'l | Hunters Int'l | Hunters Int'l | |
| HISTORY | 44 | 120 | 269 | Pickers "Runaway Train" | Pickers "Beware of Deere" | (:05) Pickers "King of Salvage" | (:05) American Pickers | (:05) Pickers "Runaway Train" | (:05) American Pickers | (:05) Pickers "King of Salvage" | | | | (:05) Pickers "King of Salvage" | | | |
| LIFE | 39 | 108 | 252 | Castle "A Dance With Death" | Castle "47 Seconds" | (:05) Castle "The Limey" | (:05) Castle "Headhunters" | Castle "A Dance With Death" | Castle "47 Seconds" | (:05) Castle "The Limey" | | | | (:05) Castle "The Limey" | | | |
| LIFEMOV | 119 | 109 | 253 | ♀ The Past Comes Knocking '24) Maren Hassler. (P) | | ♀ The Killer With No Name '24) Kabby Borders. | | ♀ The Past Comes Knocking '24) Maren Hassler. | | ♀ The Killer With No Name | | | | ♀ The Killer With No Name | | | |
| NBTV | 273 | 156 | 216 | (5:30) WNBA Weekly | WNBA | WNBA Basketball Indiana Fever at Dallas Wings | | WNBA | WNBA Basketball Chicago Sky at Las Vegas Aces | WNBA | | | | WNBA | | | |
| PAR | 34 | 241 | 241 | *** Top Gun '86) Kelly McGillis, Anthony Edwards, Tom Cruise. | | *** Coming to America '88) Arsenio Hall, John Amos, Eddie Murphy. | | *** Caddyshack '80) Chevy Chase. | | | | | | | | | |
| SYFY | 59 | 122 | 244 | (5:00) *** Fast & Furious | *** Fast Five '11) Paul Walker, Jordana Brewster, Vin Diesel. | | | ♀ Leatherface '17) Stephen Dorff, James Bloor, Sam Strike. | | *** Warm Bodies '13) | | | | | | | |
| TBS | 33 | 139 | 247 | Big Bang | Big Bang | Big Bang | Big Bang | *** Crazy Rich Asians '18) Henry Golding, Constance Wu. | | *** Guess Who '05) Ashton Kutcher, Bernie Mac. | | | | | | | |
| TCM | 169 | 132 | 256 | *** Carmen Jones '54) Dorothy Dandridge. | | *** Sidewalk Stories '89) Nicole Alysia, Charles Lane. | | *** Lost Boundaries '49) Mel Ferrer, Beatrice Pearson. | | *** The Emperor Jones | | | | | | | |
| TLC | 45 | 183 | 280 | 1000-Lb. Sisters | 1000-Lb. Sisters | 1000-Lb. "Breaking Point" | 1000-Lb. "A House Divided" | 1000-Lb. Sisters | 1000-Lb. Sisters | 1000-Lb. "Breaking Point" | | | | 1000-Lb. "Breaking Point" | | | |
| TNT | 32 | 138 | 245 | *** Back to the Future '85) Christopher Lloyd, Michael J. Fox. | | *** Back to the Future Part II '89) Christopher Lloyd, Michael J. Fox. | | NCIS: N.O. "A New Dawn" | | NCIS: N.O. "The Last Mile" | | | | | | | |
| TRAV | 49 | 196 | 277 | Mysteries of the Deep "Lost Relics of the Space Age" | | Beyond the Unknown | | Beyond the Unknown | | Mysteries of the Deep "Lost Relics of the Space Age" | | | | Beyond the Unknown | | | |
| TRU TV | 30 | 242 | 246 | MotoGP Racing | MotoGP Racing Gran Premio GoPro de Aragón | | | *** For Love of the Game '99) Kelly Preston, John C. Reilly, Kevin Costner. | | Imp. Jokers | Imp. Jokers | | | | | | |
| USA | 31 | 105 | 242 | Law & Order: SVU | Law & Order: SVU | Law & Order: SVU | Law & Order: SVU | Law & Order: SVU | Law & Order: SVU | Law & Order: SVU | Law & Order: SVU | Law & Order: SVU | Law & Order: SVU | Law-SVU "American Dream" | | | |

I R E H S I F W M A R I H I S
 H A J T R E I V I L O O H R D
 G O N A E T T J U A Y S U A A
 E A B T N A C T O T T H N N V
 C G B R H N H L I Z T I M A I
 R E I E E O A E A R P E N D D
 A O L O O N N P A I R L R A E
 C R L E R V D Y W I R A S I L
 C G Y Y K I L A C O L E D U R
 E E L D A C E O N I T D A C E
 B T L I M T R G G K E C K E K
 E T H A E O C L A I C A E H R
 R E Y H A R A S S R R R I T A
 T A M E L I S S A I Y O T E P
 R U T H H A E Y M A R L H D E

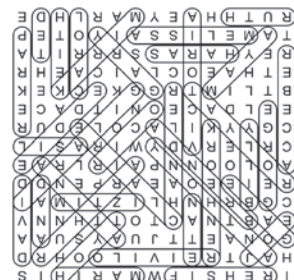
Six Feet Under

- | | | | |
|----------|---------|----------|----------|
| ANITA | DAVID | JOE | OLIVIER |
| ANTHONY | EDDIE | KARIM | PARKER |
| ARTHUR | FISHER | KEITH | REBECCA |
| BILLY | GABE | KROEHNER | RICO |
| BRENDA | GARY | LISA | RUTH |
| CAROL | GEORGE | MAYA | SARAH |
| CHANDLER | GILARDI | MELISSA | TAYLOR |
| CLAIRE | HIRAM | MITZI | TED |
| DANA | HOYT | NATE | VICTORIA |

tonight's picks



Tacarra Williams hosts "Totally Funny Kids"



Falling in Love in Niagara
HALL 5 p.m.

Just what is it about Niagara Falls that makes it such a hotspot for honeymoons? When her fiancé (Chris Violette) dumps her before the wedding, Madeline (Jocelyn Hudson) decides to go see the Falls without him. While there, she stumbles upon true love.

Twister
AMC 6 p.m.

Dr. Jo Harding (Helen Hunt) and her team prepare a prototype to launch a data-gathering tool that could help save lives as the most powerful storm in decades approaches. Her estranged husband, Bill (Bill Paxton) rejoins the team for one last mission.

The Real Housewives of Orange County
BRAVO 7 p.m.

Diamonds might be a girl's best friend, but Botox and filler keep them camera ready. As the ladies of Orange County wrap their heads around the revolving door of each other's relationships, they wonder if the constant backstabbing is worth the trouble.



Thinking of buying, selling, investing?
 Call your local real estate experts!



Valee Stahlberg
 c: 505-400-0579



Tiffany Saunders
 c: 505-440-3768



Allison Kuper Smith
 c: 575-644-4609

1990 E Lohman Ave #V3, Las Cruces NM O: 575-524-6800

What's Available **NOW** On



“Cómo cazar a un monstruo” (Sept. 6)
Lluís Gros, sentenced to 23 years in prison for sexual abuse, asks YouTuber and filmmaker Carles Tamayo to make a documentary about his

life to clean up his image after his conviction. Carles agrees, thinking that Gros will apologize, but when he realizes that this is not his intention and that he is still free, he tries to find out why he is still unpunished. After months of surveillance and extensive investigation, Carles discovers many other crimes committed by Gros and sets up a trap that leads him to prison.



“The Lego Movie 2: The Second Part” (Available Now)

The citizens of Bricksburg face a dangerous new threat when LEGO DUPLO invaders from outer space start to wreck everything in their path. The battle to defeat the enemy and restore harmony to the LEGO universe takes Emmet (Chris Pratt), Lucy (Elizabeth Banks), Batman (Will Arnett) and the rest of their friends to faraway, unexplored worlds that test their courage and creativity.



“10 Cloverfield Lane” (Available Now)

After getting in a car accident, Michelle (Mary Elizabeth Winstead) awakens to find herself in a mysterious bunker with two men named Howard (John Goodman) and Emmett (John Gallagher Jr.). Howard offers her a pair of crutches to help her remain mobile with her leg injury sustained from the car crash and tells her to “get good on those” before leaving the bunker. Told that there has been an alien attack and the outside world is poisoned, Howard and Emmett’s intentions soon become questionable and Michelle is faced with a question: Is it better in here or out there?



“War of the Worlds” (Available Now)

In this 2005 adaptation of the original H.G. Wells story, Dockworker Ray Ferrier (Tom Cruise) struggles to build a relationship with his two children, Rachel (Dakota Fanning) and Robbie (Justin Chatwin). When his ex-wife, Mary Ann (Miranda Otto), drops them off at Ferrier’s house, it seems as though it will be just another tension-filled weekend. However, when electromagnetic pulses of lightning strike the area, the strange event turns out to be the beginning of an alien invasion, and Ferrier must now protect his children as they seek refuge.

**18 x 18
PORCELAIN
TILE
FOR ONLY
\$1.49**

Malooly's
FLOORING COMPANY *since 1907*
765 N. VALLEY DR.
(575) 523-0633

cooking log

Friday

8 p.m. COOK Fire Masters
FOOD Diners, Drive-Ins and Dives
8:30 p.m. FOOD Diners, Drive-Ins and Dives
9 p.m. COOK Fire Masters
FOOD Diners, Drive-Ins and Dives
9:30 p.m. FOOD Diners, Drive-Ins and Dives

Saturday

8 p.m. COOK Iron Chef America
DEST BBQ Pitmasters
FOOD Diners, Drive-Ins and Dives
8:30 p.m. FOOD Diners, Drive-Ins and Dives
9 p.m. COOK Iron Chef America
DEST BBQ Pitmasters
FOOD Diners, Drive-Ins and Dives
9:30 p.m. FOOD Diners, Drive-Ins and Dives

Sunday

8 p.m. COOK Man v. Food
FOOD Alex vs America
8:05 p.m. HISTORY The Food That Built America
8:30 p.m. COOK Man v. Food

9 p.m. COOK Man v. Food
FOOD Beat Bobby Flay
9:05 p.m. HISTORY The Food That Built America
9:30 p.m. COOK Man v. Food
FOOD Beat Bobby Flay

Monday

8 p.m. COOK Bizarre Foods: Delicious Destinations
FOOD BBQ Brawl
8:30 p.m. COOK Bizarre Foods: Delicious Destinations
9 p.m. COOK The Zimmern List
FOOD Bobby's Triple Threat
9:30 p.m. COOK The Zimmern List

Tuesday

8 p.m. COOK Anthony Bourdain: No Reservations
DEST BBQ Pitmasters
FOOD Bobby's Triple Threat
9 p.m. COOK Anthony Bourdain: No Reservations
DEST BBQ Pitmasters
FOOD Chopped

Wednesday

8 p.m. CLEO Culture Kitchen
FOOD Guy's Grocery Games
8:30 p.m. CLEO New Soul Kitchen
BYUTV Best Cake Wins
9 p.m. CLEO Just Eats With Chef JJ

FOOD Guy's Grocery Games Thursday

8 p.m. COOK Bizarre Foods: Delicious Destinations
FOOD Beat Bobby Flay
8:30 p.m. COOK Bizarre Foods: Delicious Destinations

FOOD Beat Bobby Flay

9 p.m. COOK Bizarre Foods: Delicious Destinations
FOOD Beat Bobby Flay
9:30 p.m. COOK Bizarre Foods: Delicious Destinations
FOOD Beat Bobby Flay

Edward Jones

> edwardjones.com | Member SIPC

Let's partner for life's moments.

Together, we'll help you prepare for the next one — big or small.



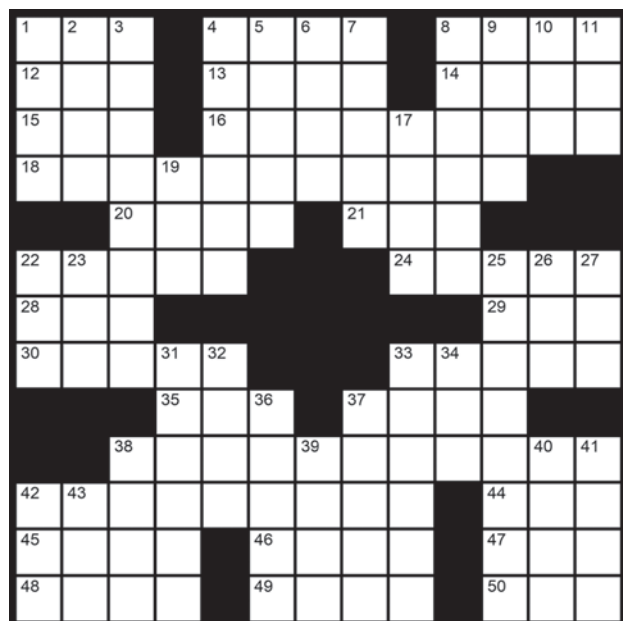
Bruce A. Ball, CRPC™
Financial Advisor

3880 Foothills Rd Ste 2
Las Cruces, NM 88011-4631
575-522-5583

© 2024 EDWARD JONES & CO. LP. ALL RIGHTS RESERVED.



crossword puzzle



Across

1. Phoebe to Prue or Piper on "Charmed"
4. "Chiquitita" quartet
8. Genesis twin
12. ___-Man (arcade game)
13. ___ Walken ("The West Wing" character)
14. It parallels a radius

15. In times past
16. Carrie Coon's series, with "The"
18. Jennifer Aniston's series, with "The"
20. Hunt for
21. Your and my
22. TV show covering Hollywood since 1991
24. Beginnings
28. Family docs

Down

1. Meat in a Monty Python skit
2. Cassio's rival
3. "The Departed" (2006) director
4. Texas A&M team
5. Flip one's lid?
6. Lux. neighbor
7. "___ to bed"
8. Writer Welty

29. Charge carrier
30. El ___
33. Pasta topper
35. Mouths, anatomically
37. Deliver a tirade
38. Loren Bouchard's animated series
42. "Hijack" star
44. White alternative
45. Teutonic turndown
46. "___ Lang Syne"
47. Fleming who created 007
48. Flow stopper
49. Arborist's concern
50. Small colonist

9. Deli side
10. "Brokeback Mountain" (2005) director Lee
11. Home of the tallest bldg. in the world
17. Former Israeli prime minister Olmert
19. Green, in a way
22. Pudding ingredient
23. "Morning Edition" aier
25. Lane where "Desperate Housewives" takes place
26. "Wayne's World" (1992) word
27. ___-Off (windshield cover brand)
31. Talking amorously
32. Planets and such
33. Memorial Day event
34. Coll. major

Crossword Solution



Picture Framing
Art Supplies
Local Art
Classes

Voted **Bulletin's Best**

For Best Picture Framing & Best Art Supply Store in 2021, 2022, 2023 & 2024!

FRAME & ART CENTER
 1100 S. Main St. at Idaho in Pueblo Plaza
575-526-2808
 Tues-Fri 9-5:30 Mon & Sat. 10-3

Mike's Blinds & Shutters

INTERIOR & EXTERIOR SHADES
 REPAIR & INSTALL

Miranda Solis
 Sales Consultant | Miranda.BlindSales@gmail.com

575-202-0597
WindowTreatmentsInLasCrucesNM.com

36. "Have ___" ("Make yourself comfortable")
37. Moscow money
38. Vivacity
39. Picture problem
40. Tom Clancy hero
41. Elated
42. Time ___
43. Dover's state: Abbr.

Worldwide Flower Delivery! Since 1985

FLOWERAMA

Quality Floral Products at Reasonable Prices

Shop Local **We have Flowers and Gifts for all occasions**

1300 S. EL PASEO RD. LAS CRUCES
575.523.6400

Mon-Sat 8am-6pm Closed Sundays

D.A. DENTAL ASSOCIATES, PA

Preventive Dentistry • Fillings • Crowns
 Root Canals • Bridges • Implants
 Full & Partial Dentures

Medicare Advantage Provider - Accepting New Patients

2205 S. Solano Drive, Las Cruces, NM | 575.522.7320 | www.da-lc.com

CELESTIAL HEARING SOLUTIONS

2001 E Lohman Ave #112
 Las Cruces, NM, 88001

575-232-9022
 celestialhearing.com

ROOTED IN THE COMMUNITY FOR OVER 25 YEARS

COMPREHENSIVE HEARING ASSESSMENTS

THE RIGHT HEARING TECHNOLOGY FOR YOUR LIFESTYLE, BUDGET, AND STYLE

FRIENDLY COMMUNITY-FOCUSED TEAM

Paula C. Rogers
 BC-HIS
 (National Board Certified in Hearing Instrument Sciences)

Hearing Specialists Caring for the Hearing Healthcare Solutions for Las Cruces Residents

SUDOKU

| | | | | | | | | |
|---|---|---|---|---|---|---|---|---|
| 3 | | | | 4 | 2 | 8 | | |
| | | | | | 8 | | | 4 |
| | | | 6 | | 1 | | | |
| | | | 3 | 6 | | | | |
| | 5 | 4 | | | | | | 1 |
| 2 | | 9 | | | | | 7 | |
| | | | 9 | | 5 | 4 | | |
| 8 | | | | | | | 2 | |
| | 7 | | 2 | | 6 | | | 5 |

To complete this puzzle, place the numbers 1-9 in the empty cells, so that every row, column and 3-by-3 box (in bold outline) contains all nine digits.

Each number 1-9 may appear only once in each row, column and 3-by-3 box.

weblinks://

There's a mystery afoot when an anonymous, cloaked buyer purchases all of Judy's art. While she attempts to find the culprit, Beef, Wolf, Ham and Moon keep themselves occupied by growing a massive cabbage, and Honeybee and Jerry come up with a challenge of their own. Ahead of Season 5, a bonus episode of "The Great North" airs Sunday, Sept. 1, on Fox, with all episodes from Season 4 currently available to watch at fox.com/the-great-north/

| | | | | | | | | |
|---|---|---|---|---|---|---|---|---|
| 6 | 5 | 1 | 9 | 8 | 2 | 3 | 7 | 4 |
| 6 | 7 | 2 | 3 | 4 | 1 | 5 | 6 | 8 |
| 3 | 8 | 5 | 4 | 7 | 6 | 2 | 9 | 1 |
| 8 | 8 | 1 | 5 | 4 | 7 | 6 | 2 | 3 |
| 1 | 3 | 1 | 6 | 2 | 7 | 8 | 5 | 4 |
| 2 | 7 | 8 | 1 | 3 | 6 | 9 | 5 | 4 |
| 7 | 5 | 4 | 8 | 6 | 9 | 1 | 3 | 2 |
| 4 | 4 | 2 | 7 | 5 | 3 | 8 | 6 | 1 |
| 5 | 8 | 9 | 5 | 4 | 2 | 8 | 6 | 9 |

LOCALLY & FAMILY OWNED SINCE 1984



OUR SERVICES

- Plumbing
- Heating
- Air Conditioning
- Duct Cleaning
- Commercial HVAC
- Water Treatment





SCAN TO SCHEDULE A FREE ESTIMATE

YOUKNOWSUNCITY.COM **575-526-9758**  

BINGO

Fill in each box of the BINGO grid below with an answer that begins with the letter above each column and belongs to the category listed before each row. List one answer for each box, although there is more than one acceptable answer for many of the boxes.

| | | | | | |
|----------------------------------|---|---|---|------------|---|
| | C | A | M | B | Y |
| Characters in "The Morning Show" | | | | | |
| Ingredients a baker might use | | | | | |
| Musicians with one name | | | | | |
| Dice games | | | | | |
| Famous bears | | | | Free Space | |

infocus



"Uglies" (Netflix — Sept. 13, Movie Premiere)

In a futuristic world that imposes a cosmetic surgery at 16, Tally (Joey King) is eager for her turn to join the rest of society. But when a friend runs away, Tally embarks on a journey to save her that upends everything she thought she wanted. Based on the hit science fiction novel by Scott Westerfeld.

| | | | | | |
|--------|---------------|------------|------------|-------------------|----------------------------------|
| Yogi | Balo/ Boo Boo | Free Space | Andy Panda | Corduroy | Famous bears |
| Yahzee | Badgamon | Mountain | Aces | Craps | Dice games |
| Yanni | Bjork | Madonna | Adele | Cher | Musicians with one name |
| Yeast | Butler | Marzipan | Anise | Cream | Ingredients a baker might use |
| Yanko | Bradley | Ma/Mitch | Alex | Cory/Chip/ Claire | Characters in "The Morning Show" |
| Y | B | M | A | C | Characters in "The Morning Show" |

Bingo — Solution

Casey Carpet

OF LAS CRUCES, INC.

FAMILY OWNED AND OPERATED FOR OVER 35 YEARS



Southern New Mexico's largest inventory

1515 W. AMADOR
575-523-9595

MON. - FRI. 8 A.M. - 5 P.M. • SAT. 9 A.M. - 4 P.M.
WWW.CASEYCARPETOFLASCRCES.COM



Flooring AMERICA



alternate puzzle

| | | | | | | | | | | | |
|------|------|-----|----|---|-----|----|----|------|------|------|----|
| 1 | 2 | 3 * | | 4 | 5 * | 6 | 7 | | 8 | 9 | 10 |
| 11 | | | | 12 | | | | | 13 | * | |
| 14 | | | 15 | | | | * | 16 | | | |
| | | 17 | | | | | 18 | | | | |
| 19 | 20 | | * | Who was a general in both the American & British armies during the American Revolution? | | | | 21 * | | 22 | 23 |
| 24 | | | | | | | | | 25 | | |
| 26 * | | | | | | | | | 27 | | |
| 28 | | 29 | | | | | | 30 | 31 | * | |
| | | 32 | | 33 * | | | 34 | | | | |
| 35 | 36 * | | | | 37 | 38 | | | | 39 * | 40 |
| 41 * | | | | 42 * | | | | | 43 | | |
| 44 | | | | 45 | | | * | | 46 * | | |

The solution to the question is found within the answers in the puzzle. In order to discover this hidden solution, unscramble the letters noted with asterisks within the puzzle.

Across

- 1. N.L. East team, on scoreboards
- 4. "Animal House" (1978) group
- 8. Wear and tear
- 11. Stay-at-home ____
- 12. Tabula ____
- 13. The Platters' "____ Mine"
- 14. Renowned round sung in French
- 17. Sailor's affirmative
- 18. Sharer's word
- 19. Forward
- 21. "____ of Eden"
- 24. Command to go forward
- 25. Preposition
- 26. The powers that ____
- 27. The States, briefly
- 28. Actor Guinness
- 30. Outlaws
- 32. Wimple wearer
- 34. Salon offering
- 35. Stay current

- 41. Elbow's site
- 42. Small amounts, as of cream
- 43. Test site
- 44. "Way to go!"
- 45. Say again
- 46. Court ploy

Down

- 1. Common digital doc format
- 2. Laugh sound
- 3. Utopian
- 4. Not tied down
- 5. British rule in colonial India
- 6. Simile's middle
- 7. ____ Bell
- 8. Nichelle's "Star Trek" role
- 9. Behold
- 10. Relative of -trix
- 15. Coveted golf trophy
- 16. It's bigger than a twin

- 19. Bubbly drink from Asia
- 20. Law school newbie
- 22. Surprise greatly
- 23. Get rid of
- 29. Foe
- 31. The least bit
- 33. Au naturel
- 34. "Eh"
- 35. Major retail jeweler
- 36. Historic time
- 37. Fundraising grp.
- 38. "Frankly," in texts
- 39. Confucian path
- 40. Fall back

Solution:
Benedict Arnold

| | | | | | | | | | | | | | | |
|---|---|---|---|---|---|---|---|---|---|---|---|---|---|---|
| B | O | L | O | H | E | E | C | O | L | A | Y | A | V | A |
| L | A | B | D | A | B | S | L | A | B | S | L | A | R | M |
| E | A | T | E | P | D | A | T | E | K | E | P | U | P | T |
| S | E | T | S | E | T | N | N | N | S | E | T | N | N | N |
| S | N | B | A | N | C | A | L | E | C | A | L | E | C | A |
| S | O | N | N | E | R | E | N | B | E | R | E | N | B | O |
| S | T | E | A | S | T | E | A | S | T | E | A | S | T | E |
| O | U | R | O | U | R | O | U | R | O | U | R | O | U | R |
| S | E | S | O | E | A | C | O | E | S | E | S | O | E | S |
| D | A | D | R | A | S | A | C | O | E | S | E | S | O | E |
| U | S | E | F | R | A | T | U | S | E | F | R | A | T | U |

Estevan's
DONE RIGHT
LANDSCAPING
LAWN CARE | MAINTENANCE | TREE SERVICE & MORE
(575) 635-3319

infocus



"How to Die Alone" - Season 1 (Hulu — Sept. 13, Series Premiere)

This comedy series follows Mel (creator Natasha Rothwell), "a broke, fat, Black" JFK airport employee who's never been in love and has forgotten how to dream. Until, that is, she has an accidental brush with death that catapults her on a journey to finally take control and start living by any means necessary.

Merlins
Magical Market

FEATURING:
DIVINATION BY RON
The most amazing tarot, palm & crystal ball psychic in the southwest!

ALSO, SHOP OUR WIDE ARRAY OF METAPHYSICAL SUPPLIES

merlinsmagicalmarket.com
Monday - Saturday
10 am - 5 pm

901 S. MAIN ST., LAS CRUCES, NM • 575-222-0468

PRESENT THIS AD FOR A 20% DISCOUNT

NEED TO RELAX?
Experience *bliss*

702-379-8181

Located inside
Counseling Las Cruces
530 N. Church St.,
Las Cruces

Avidan Berk
Licensed Massage Therapist, offering Holistic Massage Services

Book online at:
mojaveavimassage.com

Welcoming patients of all ages. Insurance accepted.
Call: 575-526-9878 fax: 575-526-7835
counselinglas Cruces.com

COUNSELING LAS CRUCES
Specializing in:
Depression, Anxiety, Addiction, Trauma, Self-Esteem Issues, Stress Management, Life Issues and more

Call Today to find out more about our support groups!



Balanced Primary Care

At Balanced Primary Care, we provide a holistic approach to healthcare, offering a wide array of services tailored to meet your individual needs. Our team is dedicated to ensuring your well-being and guiding you through your health journey with compassion and expertise.

Now Accepting New Patients
CALL US NOW (575) 652-4909



2930 Hillrise Dr., #6 Las Cruces, NM
Monday - Friday 9am-5pm
BalancedPrimaryCare.com

Having a hard time hearing?



Experience the best hearing possible in any environment at an affordable price!



We can help, stop in Today

Hearing aids are **ESSENTIAL** and need to be **RELIABLE** because they are exposed to oils, sweat, earwax, humidity, water, dust, and other foreign materials.

HURRY! Schedule your EXCLUSIVE appointment today!

Intrigue AI Rechargeable Hearing Aids are tested to be WATERPROOF, SWEATPROOF, AND EVERYDAY-PROOF!

INTRIGUE^{AI}

- Humidity Test
- Rain Spray Test
- Targeted Sweat Drip Test



920 N. Telshor Blvd Suite A, Las Cruces, NM ♦ 575-526-3277 ♦ www.HearOnEarthNM.com

WORD SEARCH

In the grid below, twenty answers can be found that fit the category for today. Circle each answer that you find and list it in the space provided at the right of the grid. Answers can be found in all directions—forward, backward, horizontally, vertically and diagonally. An example is given to get you started. Can you find the twenty answers in today's puzzle?

Today's Category: Words That Are Different Words Backwards

| | | | | | | | | | | | |
|---|---|---|---|---|---|---|---|---|---|---|---|
| H | D | H | M | C | K | A | R | H | Y | S | W |
| S | E | R | I | F | C | Y | D | E | T | A | L |
| G | C | J | X | L | I | R | R | G | I | Z | |
| M | A | U | U | B | A | E | O | K | V | A | S |
| H | L | T | M | P | X | P | V | E | S | A | L |
| S | T | R | E | S | S | E | D | E | T | I | E |
| T | B | R | S | M | S | P | I | J | R | B | E |
| I | Y | S | N | L | A | M | I | N | A | P | K |
| N | E | J | O | C | I | N | Y | F | W | N | U |
| K | W | O | E | N | D | P | V | U | O | E | Q |
| E | P | R | E | P | H | T | U | B | A | G | V |
| R | V | D | R | A | W | E | R | P | Z | W | Z |

1. Bonk
2. _____
3. _____
4. _____
5. _____
6. _____
7. _____
8. _____
9. _____
10. _____
11. _____
12. _____
13. _____
14. _____
15. _____
16. _____
17. _____
18. _____
19. _____
20. _____

| | |
|------------|--------------|
| 10. Repaid | 20. Tuba |
| 9. Recap | 19. Stressed |
| 8. Nametag | 18. Straw |
| 7. Lamina | 17. Stinker |
| 6. Lager | 16. Sports |
| 5. Drawer | 15. Sloop |
| 4. Devil | 14. Slitup |
| 3. Denim | 13. Sleek |
| 2. Decal | 12. Sent |
| 1. Bonk | 11. Revel |

weblinks://

Designers Keith and Evan are known for making dreams come true. So, when they're asked to play fairy godmother and recreate a Cinderella story for the ages, they jump in, roll up their sleeves and turn a train wreck of a house into a home worthy of a fairy tale, during the Season 4 premiere of "Bargain Block," airing Wednesday, Sept. 4, on HGTV. Love Keith and Evan's style? See some of the duo's best design ideas by visiting hgtv.com/shows/bargain-block/best-ever-bargain-block-designs-pictures

Around here, everything is made up and the points don't matter. Comedians Colin Mochrie, Ryan Stiles, and Wayne Brady are back on stage and ready to improvise, taking suggestions from the audience to create hilarious skits as host Aisha Tyler keeps score with a nonsense point system. Hilarity ensues during the Season 14 premiere of "Whose Line Is It Anyway?," making its debut this Friday, Sept. 6, on the CW. Looking for laughs? The very best of the series' "Bad Hat Pick Up Lines" can be found at youtube.com/watch?v=JHHghyPfg9g

Say cheese! Chef Michael Symon takes his favorite dairy product and gives viewers a template for taste. From a crispy grilled cheese sandwich with mushrooms and blueberry jam to a dairy-free mac and cheese, the yum comes fast and easy. Take dinner outdoors, with a delicious new episode from Season 5 of "Symon's Dinners Cooking Out," airing Saturday, Sept. 7, on Food Network. Recipes for more of Symon's creative dishes are available online, at foodnetwork.com/shows/symons-dinners-cooking-out/photos/top-recipes-from-symons-dinners-cooking-out

LET'S GO TO HATCH!



Franciscan RV

661 N Franklin St, Hatch, NM
575-267-1508

franciscanrv.com





2022 MONTANA 377FL
HIGH COUNTRY



2006 WINNEBAGO
ITASCA CAMBRIA 26A



2016 SALEM T252RLXL

flowerland1c.com
flowerland21c.com

Flowerland

LAS CRUCES PREMIER FLORIST

15% OFF
IN STORE PURCHASE
USE CODE "SUMMER"

Don't wait!
Call us today to
set up your
arrangement.

Flowerland
2001 E Lohman Ave. # 126
Monday - Friday: 8:30 - 5:30 • Saturday: 9-2
Sunday: Closed • 575-525-1850

Flowerland
4660 Sonoma Ranch Blvd. # 120
Monday - Friday: 8:30 - 5:00 • Saturday: 9-2
Sunday: Closed • 575-888-4927