

MADISON

JANUARY / FEBRUARY 2021

C O U N T Y

2021
NEWCOMER'S
GUIDE



Dave's BBB

Dave's Triple B serves locally sourced salads, sandwiches, burgers, bbq, daily specials, and blue plates featuring Flora Butcher meats.

601.952.4222

Mon - Sat 10:30am - 2:30pm
4822 Route 22 | Flora, Mississippi



The FLORA BUTCHER

The Flora Butcher is an old world style butcher shop specializing in local animals, local artisan products and Raines Farm Wagyu beef.

601.509.2498

Mon - Fri 10am - 7pm, Sat 9am - 6pm
4845 Main Street | Flora, Mississippi

We Cater Any Size Event





BECKHAM

CUSTOM JEWELRY CO.

THE DISTRICT AT EASTOVER | STE. D110
601-665-4642 • info@beckhamjewelry.com

JACKSON'S BESPOKE
JEWELER





RENAISSANCE

AT COLONY PARK

Whether you're in the mood for fine dining, something casual or even something delectable to prepare at home...

RENAISSANCE HAS THE FLAVOR
YOU'RE LOOKING FOR.



FIVE GUYS



FIND US ON FACEBOOK

I-55 at Old Agency Road, Ridgeland, Mississippi | 601.519.0900

See all our retail stores and restaurants online at
www.RenaissanceAtColonyPark.com

For leasing information, contact The Mattiace Company at 601.352.1818



**LOVE WHERE YOU
LIVE, WORK AND PLAY!**

**LET POLLES PROPERTIES LLC
HELP YOU WITH ANY OF YOUR
REAL ESTATE NEEDS.**

JOHN POLLES
(601)941-7168

John@pollesproperties.com

AMANDA POLLES
(601)278-6871

Amanda@pollesproperties.com

654 Bellevue Drive | Madison
www.pollesproperties.com
601 898 3364

Ready Made

Corporate Catering

APPETIZERS, SIDES, ENTREES, & DESSERTS

BREAKFAST & LUNCH

From Our Kitchen To Your Table

We're a specialty market with homemade food you can pickup, take home, heat, and eat! Let us do all the hard work so you can enjoy gathering around your table with a home-cooked meal from Olivia's Food Emporium!



637 HWY 51, RIDGELAND | 601-898-8333 | olivasfoodemporium.com



Today's Big ADVENTURE

Even life's most enjoyable and simplest tasks can become quite an adventure. Let our nationally recognized and sub-specialized surgeons help pick you up when your hip or knee is bringing you down.

- Cutting-Edge Techniques & Procedures
- State-of-the-Art Robotic Surgery Center
- Urgent Ortho Care Clinics
- No Referral Needed
- Ortho Care for All Walks of Life

**18 Surgeons + 6 Orthopaedic Sub-specialties
+ One Focus = YOU**



MississippiSportsMedicine.com
601.354.4488



©2021MSMOC





Sherrye LaCour
Insurance
Personal and Commercial Lines

Sherrye LaCour
601-286-8230
sherrye@lacourinsurance.com
648 Lakeland East Dr. Ste B
Flowood, MS 39232
www.LaCourInsurance.com

Auto Insurance
Home Insurance
Commercial Insurance

YOU'RE ONE-STOP WINE SHOP.



Premium Wine & Spirits

MADISON CELLARS

Open Monday 10-9 | Tuesday-Saturday 10-10 | Closed Sundays

Madison's oldest and most respected wine shop for 28 years.

1038 Highway 51, Madison
601-856-0931



BEAUTIFUL & SECURE

H&H Electric offers a wide variety of lighting options that will be sure to match your style and preferences. From string lighting to garden illuminations to poolside fixtures, our team will help you decide what will enhance your property while sticking to your budget.

We go beyond just installing your display, we'll ensure your lighting design always looks as good as the day it was installed. Reach out to our friendly team today to request your complimentary design consultation.

ABOUT H&H ELECTRIC:

FAMILY OWNED AND OPERATED FOR OVER 20 YEARS
JODY HALE IS A DISABLED VETERAN AND A MASTER ELECTRICIAN
CHRISTIAN OWNED AND OPERATED BUSINESS
RESIDENTIAL WORK FROM LIGHTING, INSTALLATION AND SERVICE
CERTIFIED LIGHTING TECHNICIAN
SUPERIOR WARRANTY & SAFEGUARDS
CUSTOM INTERIOR & EXTERIOR LIGHTING
ANNUAL MAINTENANCE PLANS

H & H ELECTRIC
CO. LLC 
ELECTRIC COMPANY

H&H ELECTRIC CO., LLC | MADISON, MS | JOSEPH D. HALE | (601) 941-1981



JAN / FEB 2021



PUBLISHED BY
The Madison County Journal

PUBLISHER
James E. Prince III

**ASSOCIATE EDITOR
& PUBLISHER**
Michael Simmons



LAYOUT & DESIGN
Rachel Browning Truong

**CONTRIBUTING
PHOTOGRAPHERS**
Chris Todd & Kathy Sue Wells

CONTRIBUTING WRITERS
Duncan Dent,
Emma Ellard & John Lee



**ADVERTISING
ACCOUNT EXECUTIVE**

Joy Stewart
joy@onlinemadison.com
601.853.4222

ADVERTISING DESIGN
Godfrey Jones



Madison County Magazine is a bi-monthly supplement to the Madison County Journal designed to promote Madison County in an informative and positive manner. We welcome contributions of articles and photos; however, they will be subject to editing and availability of space and subject matter. Photographs, comments, questions, subscription requests and ad placement inquiries are invited! Return envelopes and postage must accompany all labeled materials submitted if a return is requested. No portion of this publication may be reproduced without written permission of the publisher. The opinions expressed in Madison County Magazine are those of the authors or columnists and do not necessarily reflect the views of the publisher, nor do they constitute an endorsement of products or services herein. We reserve the right to refuse any and all advertising.

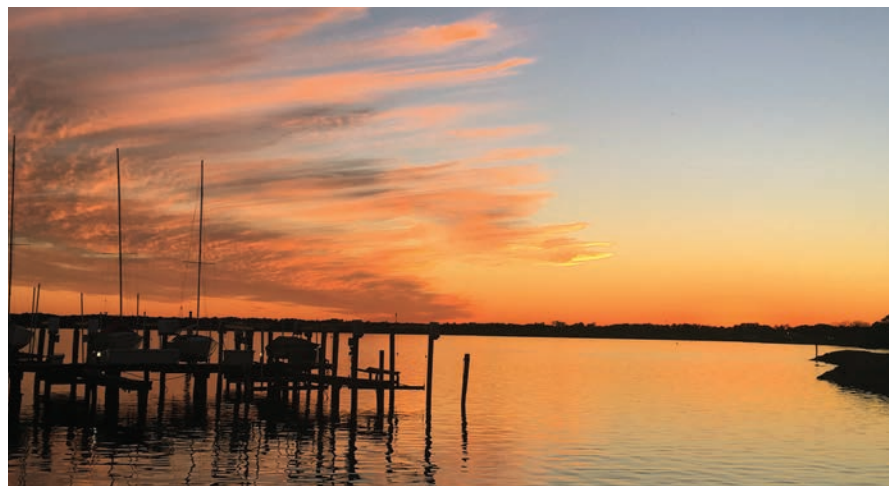
Subscribe to the magazine by subscribing to the Journal, mymcj.com, or call the office at (601) 853-4222 © 2020 Madison County Publishing Company.

CONTENTS

JANUARY / FEBRUARY



2021



6	DRINKS	32	CAN'T MISS EVENTS
8	PEOPLE.....	34	PUBLIC SCHOOLS
	Life on Franklin Farms	37	PRIVATE SCHOOLS
13	Realty Showcase	42	HIGHER EDUCATION
18	BUTCHER'S BLOCK	44	HEALTHCARE
	Burnt Ends: The Perfect .	47	PARKS AND
	Pieces of Meat		RECREATION
25	CONTACT	50	DINING
	INFORMATION	52	SHOPPING
30	OUT AND ABOUT	54	CHURCHES



Photo by Kathy Sue Wells

On the Cover:
Overlooking the
Jackson Yacht Club
in Ridgeland

THE YEAR OF THE BATCH COCKTAIL

by Duncan Dent

2020 is over and we all need a drink, maybe more than one. Don't spend 2021 making multiple trips to the bar cart only to spend 15 minutes trying to make another drink "just perfect."

This is where the batch cocktail comes in. All the comfort of a classic cocktail, served with all the ease of a trip to the fridge for another glass of lemonade.

The whole process requires some math but nothing that can't be easily solved on a bar napkin with simple multiplication. There is also no shame in reaching for a calculator.

Most drinks can be easily converted by scaling the ingredients up as needed. Think the simplicity of a martini: two parts gin, one part vermouth, meaning you use twice as much gin as vermouth.

The hard part comes when you consider the "dilution." When you shake or stir a cocktail over ice, the ice melts and the cocktail is diluted. Dilution may be a matter of personal taste, meaning you get to taste test batches of cocktails but Kevin Sintumuang in a piece for Esquire says that .75 ounces of water per drink (which ideally measures between four and five ounces) for say an Old Fashioned or Negroni or as much as one and a half ounces for a Martini or Manhattan.

Below we have an easy to make and ready to pour Manhattan as well as an undiluted Negroni best poured over ice.

Below we have a good place to start but once you know your cocktail, ingredients, proportions and container of choice the fun really starts. May you spend 2021 perfecting your home batch cocktail.





MAKE YOUR OWN

MANHATTAN

11.25 oz rye
5 oz sweet vermouth
.5 oz Angostura bitters
7.5 ounces water

NEGRONI

6 oz gin
6 oz sweet vermouth
6 oz Campari
oranges





LIFE ON FRANKLIN FARMS

By John Lee

PICKENS — For Steve Franklin, he prefers the simple, old fashioned ways of living compared to the city life.

Franklin and his wife Rhonda have been making their own cheese, butter and milk, growing their own food, and living the farm life with draft horses at their home here for the last 33 years.

The practice of using draft horses and old fashioned farming has gone away over the years, but Franklin still sticks to it as his preferred way of living. He does own a tractor, but the old wagons and plows are his go-to pieces of equipment.

He has a water pump, an old fashioned smoke house where he salts and slow-smokes his meat, a green house for his vegetables, and an entire shed dedicated to pasteurizing milk until it's safe to drink. He churns his own butter with a very old churner that belonged to his grandparents. He also owns several dogs, cows, chickens, and a cat.

Franklin grew up in Canton, and from

there he moved with his family to Sandhill and attended Pisgah. He ended up back in Canton, and then moved to New Orleans for a short time, where he worked for a company called Electo Cole. He returned to Mississippi after that and settled down in Pickens to continue his farming from where he left off as a child.

He has two kids, Jenny and Daniel, and four grandkids, Camden, Callie, Jace, and Aaron, one of whom lives in Flowood, and the other three live in Nebraska.

The reason for Franklin's lifestyle choice is that he just prefers the simple life. He grew up with it along with his family, and he chose to continue living this way. He said he still loves it and hasn't run into any particular obstacles, besides snakes. He recalled having to deal with a copperhead snake, which he nearly killed before it escaped into the hay.

"Both my wife and I are old fashioned people, and we just enjoy being outside and raising our own stuff," Franklin said.

“I learned a lot from my parents and especially my grandparents, as times were tough for them back then.”

Franklin said he’s had friends tell him if things ever get really bad, they’ll be coming out to his farm to lay low.

Franklin’s favorite part of the farm is working together with his wife and raising most of what they eat.

Rhonda Franklin enjoys the camaraderie the most and said everything unravels if you don’t stay together and keep up the teamwork. She said there aren’t any drawbacks to the lifestyle and wouldn’t choose any other way to live.

“You eat naturally out here. Steve works on a lot of the things we eat, such as our chicken,” she said. “We prefer the natural stuff. You don’t have to worry about what goes into it because it is what it says it is. If you’re making butter, the ingredients are right from the source. Nothing extra is added.”

She said her grandfather lived the same old fashioned lifestyle and never worked a public job in his life — only the farm work. He owned several hundred acres of land, grew his own crops, and worked by hand making tools. She has a large beam of wood hanging over the fireplace, which was a rafter from her grandfather’s barn that was built in 1914.

Rhonda Franklin said she never had to worry about her kids not finding a source of entertainment, since they were always outside finding things to do. One day she couldn’t find the kids when it was time for supper, and when she looked out to the pond, she saw them swimming with the horses neck-deep in the water.

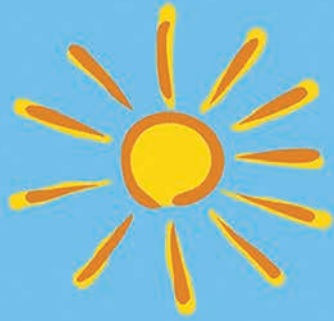
“We never needed to worry about the electronic stuff to entertain them,” she said. “All the entertainment was outside. The only reason they got a cell phone was to keep in touch with me when they were out.”

She said her daughter Jenny never planned on continuing the country life when she moved out of the house, but once she started having children, she realized they would be some pretty noisy neighbors. She then started looking for a place way out in the country, and has continued the family’s old-fashioned lifestyle.

The Franklins are still living strong on their farm and plan to stick to this simple lifestyle as long as they live.



FOOD & FUN



on the water!

OUR SHAGGY'S CREW IS READY
TO SAFELY SERVE YOU...

IN OUR SPACIOUS INDOOR DINING AREAS,
OUR LARGE OPEN-AIR DECKS, AND OUR
AWESOME TIKI TENT...

ALL OVERLOOKING THE BEAUTIFUL
ROSS BARNETT RESERVOIR!

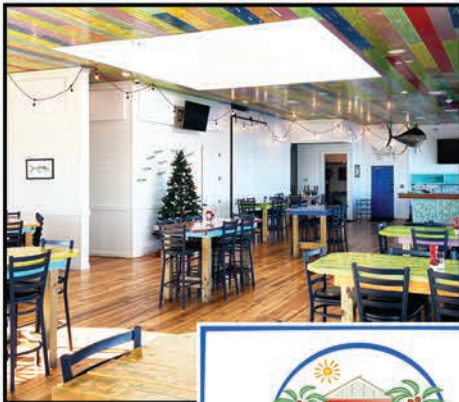




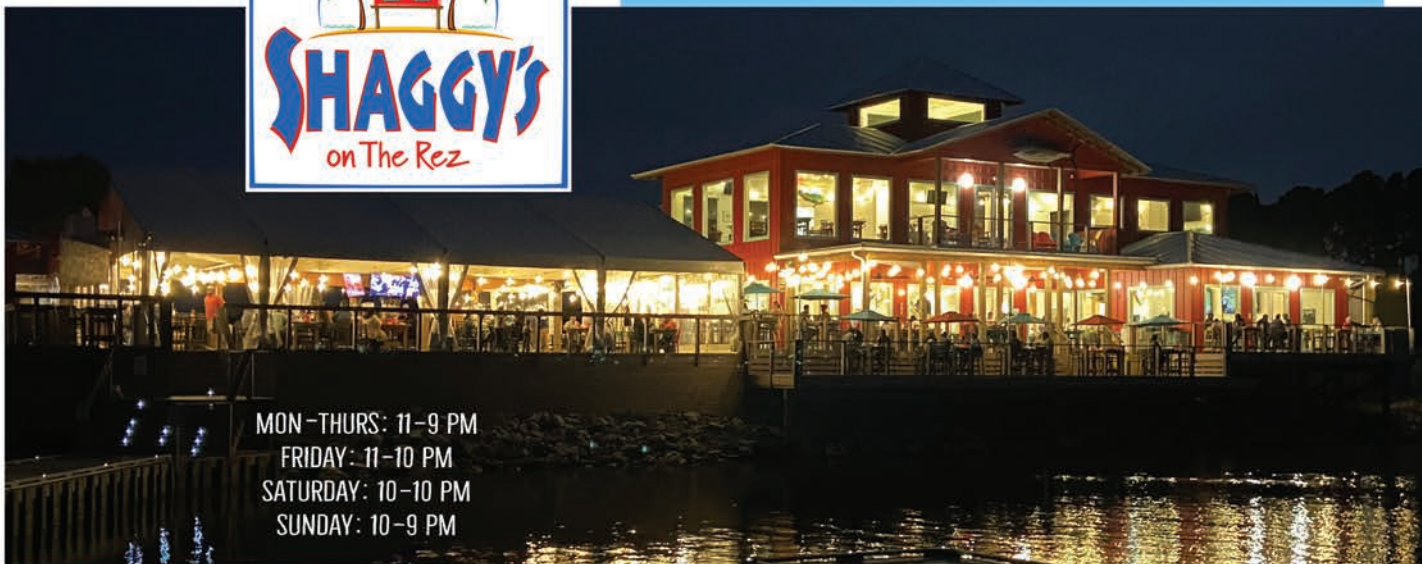
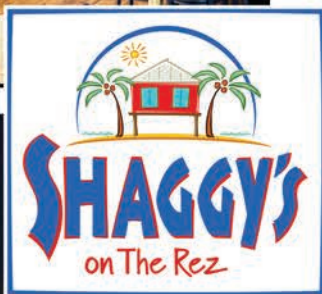
COME BY CAR OR
BOAT & ENJOY
THE BEST SUNSETS
ON THE REZ!



WE'RE GOING THE EXTRA MILE
TO KEEP YOU SAFE...INCLUDING
A STATE-OF-THE-ART SANITIZING
SYSTEM & OUR UNIQUE ABILITY
TO PRACTICE SOCIAL DISTANCING
IN OUR SPACIOUS INDOOR &
OUTDOOR SEATING AREAS.



OUR TIKI TENT, WHICH IS HEATED IN THE WINTER MONTHS, IS HOST
TO BIG-SCREEN SPORTS VIEWING, KARAOKE & TRIVIA NIGHTS,
A WINE & JAZZ EVENING, AND A WEEKEND BRUNCH FEATURING
LIVE MUSIC, AND BLOODY MARY & MIMOSA SPECIALS!



MON-THURS: 11-9 PM
FRIDAY: 11-10 PM
SATURDAY: 10-10 PM
SUNDAY: 10-9 PM

OPEN EVERY DAY • DINE-IN & TAKE OUT • 1733 SPILLWAY RD, BRANDON, MS • SHAGGYS.BIZ • 601.724.2990



SPRING SOCCER!

Soccer Shots is an engaging children's soccer program for ages 2-8 with a focus on character development.



Enroll today at soccershots.org/jackson

KENNEDY & Co. REAL ESTATE, INC.



105 LONGLEAF PLACE



Custom Built! Pastoral 2.6+/- Acres!
Gunite Saltwater Pool! Separate Guest House with Kitchen! Dramatic Entry with Floating Curved Staircase! Marble Floors! Sun Filled Rooms! Library with Mahogany Finish, Wet Bar and Second Level with Shelving! Grand Greatroom Perfect for Entertaining! Master and Guest Suite Down! \$1,283,000



JUANITA KENNEDY
601.955.9731 • 601.898.2999

WWW.KENNEDY-REALESTATE.COM

Schedule Your Eye Exam, Too! It Is **A BIG DEAL!**

Scheduling a yearly comprehensive eye exam with Jackson Eye Associates is easier than making your weekly manicure appointment. **It Is A Big Deal!**

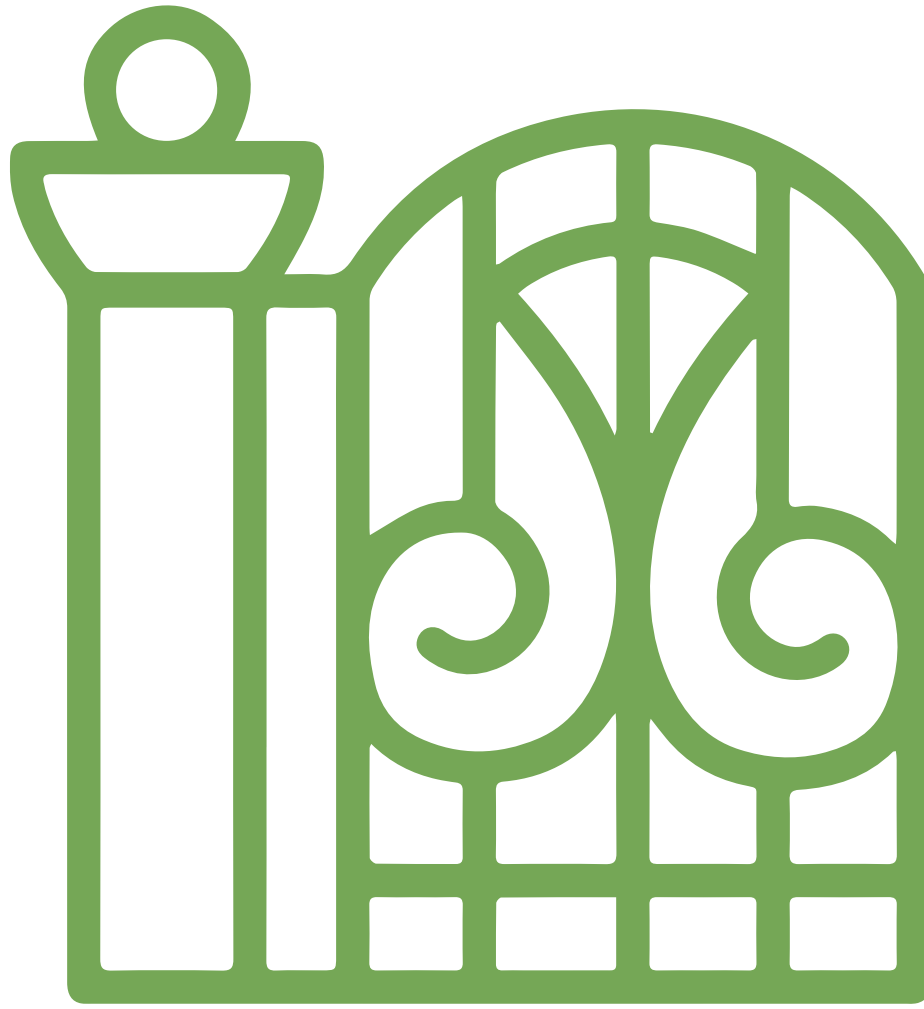
Call one of our three convenient locations to schedule your exam.
For sunglasses, prescription glasses, or contacts visit JEA Optical today!



JEA
JACKSON EYE ASSOCIATES
CLINIC • SURGERY • OPTICAL
Your Vision, Our Mission.™

JACKSON | MADISON | CLINTON
601.353.2020 | 601.853.2020 | 601.924.9750

JACKSONEYE.COM | [f](#) [i](#) [@](#)



MADISON COUNTY
REALTY
SHOWCASE



BRIDGEWATER.....\$1,490,000
116 OAKHURST TRAIL

ESTATE LIVING

Distinctive Design! Built Like A Custom! Double Lots with Pastoral Landscape! Beautiful Outdoor Living Spaces! Pool House like No Other with Full Grilling Kitchen and Full Bath with Shower! Oversize Gunite Saltwater Pool! Upper End Amenities! Formal Dining Room! Living Room with Fireplace! Greatroom filled with French Doors overlooking the Pool Area! Heart Pine Floors! Solid Cypress Doors/Beams! Loaded Gourmet Kitchen w/Brick Floors & Granite Surfaces! Sunroom or Loggia Space! Computer Room! Spacious Downstairs Master Suite! 3 Bdr./3 Baths Up! Bonus Room! Home Office or could be 5th Bdr.! Butler's Pantry/Incredible Storage Pantry! Laundry Room opens to Outside Porch! Quality Craftmanship! Brick Courtyard! Covered Backporch! 18 x 38 Size Pool with Sprayers! Secondary Drive! Iron Fencing! Oversize Garage and Generous Parking Spaces! Playground Equipment! Sprinkler System! Security System! Designer Finishes! Secondary Backporch! Bridgewater Neighborhood Amenities - Pool, Clubhouse, Tennis Courts, and Gated Entrance!

KENNEDY-REALESTATE.COM

JUANITA KENNEDY | KENNEDY & COMPANY REAL ESTATE, INC.
 601-898-2999
JUANITA@KENNEDY-REALESTATE.COM



CANTON..... \$539,500
2032 PLEASANT GIFT ROAD

ONE-OF-A-KIND

This is a one of a kind home on 20 acres and located in Madison County. You will love the beautiful wood features from ceiling to bottom. This home features 2 bedrooms, 2 baths, a large room that is currently used as a sewing room but could be used as an extra bedroom, playroom or living room. There is an open kitchen with breakfast area and plenty of room for a large kitchen table. The living room is a nice size that includes a fireplace and bookshelves. There is a large master bedroom and master bathroom with double vanities and a large walk in shower. The second bedroom is a nice size with a walk in shower as well. There is an office located off the master bedroom. This home has plenty of space! On this property you also have a large workshop, a shed and a nice sized pond. There is even an outdoor shower located in the back of the house. You will love all the custom mill work and intricate details inside this home. This home has plenty of space and is located only 3 minutes from the Natchez Trace.



POLLESPROPERTIES.COM

AMANDA POLLES | POLLES PROPERTIES
 601-278-6871
 AMANDA@POLLESPROPERTIES.COM

GREYSTONE.....\$750,000
148 CHAPEL LANE

CUSTOM CASTLE

Spacious custom-built home located on 2 breathtaking acres on 155-acre Lake Greycastle, one of state's premier trophy bass fishing lakes. Nestled in hardwoods with the feel of the country, but conveniently located just minutes from Madison shopping, dining and interstate. Private entrance and circular drive with lake views from almost every room, plus deck and screened porch. Incredible raised front porch perfect to sit and relax at the end of the day. Timeless floor plan with foyer, formal dining, formal living, study, family room, sunroom, master and spacious kitchen downstairs. Heart pine and Chicago brick floors throughout downstairs living areas and new carpet in family room and master. Custom Plantation shutters throughout the home. Master has 2 entrances--one from living room as well as French doors leading to sunroom. Living areas appointed with extensive millwork and glass transoms. Custom-designed sunroom with vault, skylight, wood beams and cedar-lined walls. First-floor study has floor to ceiling bookcases and locked closet for valuables. Two spacious powder rooms are located on opposite ends of first floor living areas. Lake-view family room has custom-built mantel and built-in cabinets and bookshelves. Well-designed, light-filled kitchen has large island with cooktop and storage, built-in desk and food prep areas. Large laundry room with laundry chute from upstairs linen closet and heated and cooled storage room in garage complete the thoughtful downstairs amenities. Upstairs has 4 bedrooms--2 with private baths and 2 which share a Jack-and-Jill bath. One bedroom can double as playroom with wall to wall bookshelves and built-ins. 3 upstairs bedrooms have custom chest of drawers, built-in desks and window seats. Incredible upstairs storage with 3 areas of floored attic, spacious closets and linen storage with laundry chute to downstairs laundry room. New architectural roof.

POLLESPROPERTIES.COM

KATHY WHITFIELD | POLLES PROPERTIES
 601-291-8801 | 601-898-3364
 KATHY@POLLESPROPERTIES.COM



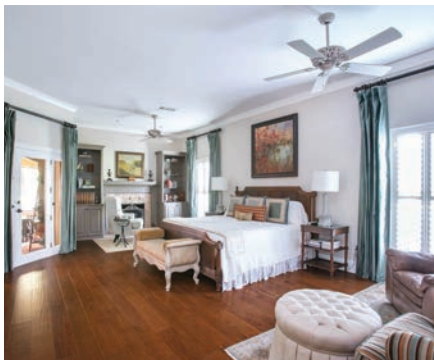
LIVINGSTON\$775,000
119 LIVINGSTON DR.

HEART OF MADISON COUNTY

You have found the perfect setting nestled on 3.5 acres in the heart of Madison county to call home!! Peaceful serene woods meets the lake frontage living. You cannot beat the location and what this beautiful home has to offer. Welcome to 119 Livingston Dr. Madison. This home features 5 spacious bedrooms (master bedroom is downstairs) and 3.5 bathrooms including a wonder mother-in-law separate apartment . You will not believe this separate apartment. It is like a separate house with a nice kitchen open to a lovely eating area and living room with a beautiful screened-in porch and view of the lake. In the main house, walk into the front door greeted by the a nice formal dining room and and huge living room with gorgeous wood floors which have been added in recent years. The floor plan is airy and open and has so many windows and natural light. You will love the big kitchen perfect for cooking and hosting large groups of people. You will love the master bedroom and bathroom suite. The backyard is amazing with a lovely screened in porch and path leading down to the lake. The garage is oversized for large boats or trucks plus there is a large parking pad for additional cars or parking. This home is unique and will not last long at this great price!

POLLESPROPERTIES.COM

AMANDA POLLES | POLLES PROPERTIES
 601-278-6871
 AMANDA@POLLESPROPERTIES.COM



RIDGELAND\$1,250,000
848 B OLD AGENCY ROAD

ESTATE LIVING

Welcome to this beautiful home on 6 acres that is nestled in the middle of Ridgeland and backs up to the Natchez Trace. This is a custom built home with tons of premium amenities. The home features beautiful arched walk ways in the front of the house, a foyer, formal dining area, great room, a large kitchen with all Viking appliances, granite counter tops in kitchen and wet bar, Wet bar with wine cooler, a large master bedroom, master bath with double vanities and walk in closet, built in bookshelves in the upstairs walk way, a room that is made to entertain with a Summer Kitchen that includes all commercial grade appliances, tongue n groove ceilings on all porches and screen porches, a beautiful backyard with an outdoor kitchen. Your may go listen to music on your walk down to the gazebo or down to your covered pier that overlooks a beautiful pond that is stocked with bass, brim and catfish! This home has so much entertaining space! You feel like you are out of the country with the convenience of being close to the city! An absolute must see house and is close to I-55 and Renaissance shopping center!

POLLESPROPERTIES.COM

AMANDA POLLES | POLLES PROPERTIES
 601-278-6871
 AMANDA@POLLESPROPERTIES.COM



135 Mississippi Parkway, Canton, MS
601.832.5592 | www.madisoncountybusinessleague.com




HART HEALTH
WEIGHT LOSS AND WELLNESS

It's TIME to get healthy!

"I've lost 21 pounds in 12 weeks with Hart Health! I feel great and I have more energy than ever. I can't wait to keep going and meeting more of my health goals. Thank you, Laura and Cherie, for all you do!"
-Lisa

601-808-3030
www.harthealthconsulting.com
118 Depot Drive Madison, MS 39110




First Baptist
MADISON

JOIN US FOR WORSHIP!

Sundays at 9:00am & 10:30am

2100 Main Street | Madison, Mississippi 39110
601.856.6177 | FBCMadison.org

PUTTING
GOD FIRST
IN THE HEART OF MADISON

101B Village Blvd. | 601.607.6004 | pconsignment.com



*Madison,
Mississippi*

PRIVATE COLLECTION
CONSIGNMENT



BURNT ENDS:

**THE PERFECT
PIECES OF MEAT**

IN THE KITCHEN



With International Chef David Raines
The Flora Butcher & Dave's Triple B Restaurant

Burnt ends are classically made from the point of a beef brisket that has already been smoked. The point can take longer so the flat is sometimes separated once it is finished. Some people also prefer to cut up the point to distribute the fat more. That fatty nature is perfect to keep it moist even with a longer cook time. There are many variations that use other cuts and other types of meat like pork belly or even slab bacon. The cooking method is basically the same.

Take your leftover smoked brisket point(cold) and find the seam of fat that runs down the middle. Take a long knife and separate the two halves by following this seam. Cube the brisket into 1" chunks. In a bowl, mix the meat with a little more of your beef rub, 1-2 Tablespoons, and add about a cup of your BBQ sauce. Mix well and move them to an aluminum pan. At this point you need to add some moisture and that gives you a chance to customize your burnt ends. 1 cup of water will keep them moist but you often see soft drinks that add extra sugar and flavor. 1 can of Dr Pepper became our go to but that's because of one employee in particular who can't seem to get enough of it. Cover the pan in aluminum foil.

Set the smoker to 250 and put the covered burnt ends in for 1 hour. Then, remove the foil and give them a stir. Put them back in the smoker for another 30 minutes, uncovered. When they are ready, they should have that "burnt" look to them but be moist and extremely tender.

We like to serve ours over a bed of french fries cooked in wagyu tallow. Then we top them with cole slaw, a drizzle of BBQ sauce and thin sliced green onion.

BBQ SAUCE FOR BURNT ENDS

- 1 medium Onion, minced
- 4 cloves Garlic, minced
- 1 ½ tablespoons Olive Oil
- 5 cups Ketchup
- 1 can Ballistic Blonde(Lucky Town Brewery)
- ½ cup Apple Cider Vinegar
- 3 Tablespoons Worcestershire Sauce
- 2 Tablespoons Dijon Mustard
- 1 cup Dark Brown Sugar
- 1 ½ Tablespoons Sweet Smoked Paprika
- 2 teaspoons Onion Powder
- ½ teaspoon Crushed Red Pepper
- 2 teaspoons Ground Black Pepper

In a pot, gently sauté the onion and garlic in the olive oil until translucent and fragrant. Add the remaining ingredients to the pot and mix well. Bring to a simmer and let the sauce reduce by about half. With a stick blender, puree the sauce to give in a smoother consistency and then check for consistency and seasoning before you chill it. Makes about a quart

BEEF RUB

- 1 cup Kosher Salt
- 1 cup Ground Black Pepper
- 4 Tablespoon Light Brown Sugar
- 2 Tablespoon Sweet Smoked Paprika
- 1 Tablespoon Granulated Garlic
- 1 Tablespoon Onion Powder
- 1 Tablespoon Chili Powder
- 2 teaspoon Ground Cumin
- 1 teaspoon Cayenne Pepper



DOG BATHS • HAIRCUTS • DYES • PET CLOTHING & MORE...

"The Doodle Lady" of Ridgeland, MS

BOOK YOUR APPOINTMENT TODAY!



The Puppy Lodge
GROOMING

*We really move
our tail for you!*

676 S. PEAR ORCHARD RD. • SUITE. C • RIDGELAND, MS
OPEN TUES. - FRI. 8AM - 6PM • SATURDAY 9AM - 3PM • CLOSED SUN. & MON.

BIAGGI'S

RISTORANTE ITALIANO



ORDER ONLINE
for curbside pick-up



RENAISSANCE at COLONY PARK

970 Highland Colony Parkway • Ridgeland
(601) 354.6600 • www.BIAGGIS.com



Whatever
your
dream...



DSU
gets *you* where
you want to go!



**DELTA STATE
UNIVERSITY**
Join in. Stand out.

1-800-GO-TO-DSU
deltastate.edu



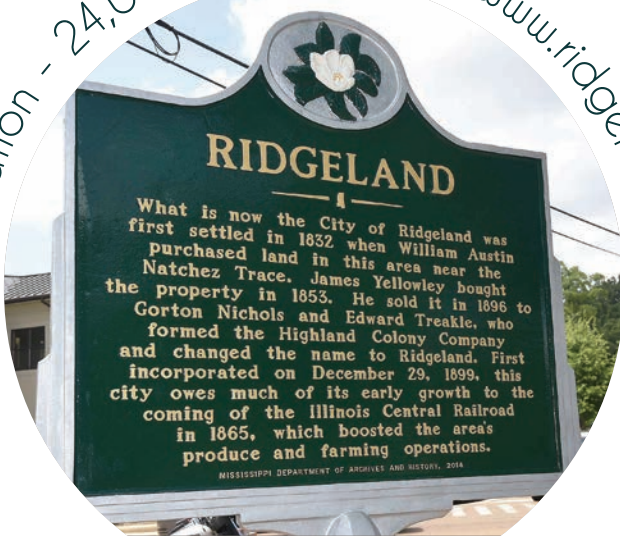


NEWCOMER'S

Population 25,639 **MADISON** www.madisonthecity.com



Population - 24,001 **RIDGELAND** www.ridgelandms.org



GUIDE



Population - 106,896 **MADISON COUNTY**

www.madison-co.com



Population 11,995 **CANTON**

www.cityofcantons.com



Population - 1,872 **FLORA**

www.florams.com

Madison County is one of the fastest-growing counties in the state of Mississippi, with widespread commercial and residential growth.

Four Metro Jackson Favorites!



Serving Jackson for over 26 years

GATHER. RELAX. SAVOR.

Nestled in the heart of Jackson, BRAVO! has proudly served delicious Italian food in a relaxed and welcoming atmosphere since 1994. With more than two decades of Wine Spectator awards, our wines are just as good as our food, and you will always be served with warmth and grace by our knowledgeable staff.



601.982.8111 | bravobuzz.com
Located in Highland Village
at exit 100 I-55, Jackson MS 39211



Baking Daily Since 1998

BAKED FRESH, BY HAND, EVERYDAY!

Broad Street offers an amazing menu of artisanal breads and pastries, made with Old World formulas and techniques as well as creative new recipes by our talented chefs. Each item is meticulously crafted from high-quality ingredients with no artificial ingredients or preservatives. From decadent desserts and holiday King Cakes to the pastries we bake fresh to go with your bottomless cup of coffee every morning, everything we do is made with endless amounts of love and dedication.



601.362.2900 | broadstbakery.com
Located in Banner Hall Shopping Center
at exit 100 I-55, Jackson MS 39206



Serving Authentic New York Pizzas Since 2007

A SLICE OF THE BIG APPLE IN JACKSON

Sal & Mookie's brought New York style to Mississippi in a big way when we opened in 2007. We use only top-quality ingredients! All of our pizzas are hand-crafted starting with home-made, hand-tossed dough. No stabilizers or artificial ingredients go near our mixer. Our pies are topped with the finest whole milk mozzarella cheese and Italian imported plum tomatoes. Last, but not least, we bake each pie in brick-lined, gas-fired deck ovens the old-fashioned way.



601.368.1919 | salandmookies.com
Relocating to The District at Eastover
Spring of 2021

Now Open in Madison

NEW YORK PIZZA WITHOUT THE ATTITUDE

With authentic New York pizzas and a full Little-Italy themed menu plus an ice cream shop right in the heart of the restaurant, Sal & Mookie's is a style and an experience Madison loves! In addition to fantastic pizzas, we offer gourmet paninis and hot subs, pastas and appetizers including award-winning wings, and out-of-this-world flame grilled burgers. And to delight the inner child in everyone, we offer an almost-endless variety of splits, shakes, malts, floats, and scoops. Sal & Mookie's Madison is owned and operated by Patrick Munn and Hali Sappinton, two veteran employees of BRAVO! and Sal & Mookie's Jackson!



601.499.1300 | salandmookiesmadison.com
Located in Colony Crossing Shopping Center
111 Colony Crossing Way, Madison, MS 39110

MADISON COUNTY



In 1828, nine years after Mississippi was admitted into the United States, Madison County was established as Mississippi's 23rd county. Named after President James Madison, this county has a rich legacy of community living, economic development, and natural beauty. To this day, Madison County is still one of the most robust and lively places to live in Mississippi.

With a population of approximately 106,000, Madison County remains one of the fastest-growing counties in the state. Home to over 20 public schools and a dozen private/parochial schools, Madison County is known for its excellence in academic achievements.

Supported by various Chambers of Commerce and the Madison County Business League & Foun-

dation, Madison County provides an excellent atmosphere to raise a family and build a community.

While maintaining a boisterous social calendar, Madison County is one of the largest economic powerhouses in Mississippi. Shopping centers such as Renaissance at Colony Park, Township and Colony Park, Northpark, Grandview, and Colony Crossing provide both job opportunities as well as excellent shopping opportunities for Madison County residents and visitors.

Madison County is also home to one of the largest automotive plants in North America with the Nissan Canton Automotive Plant. In addition, Amazon announced in 2020 plans to invest millions in a new warehouse in the county.



The Next Chapter in Children's Care

The Kathy and Joe Sanderson Tower at Children's of Mississippi is now open. The tower begins the next chapter in our history of providing compassionate, state-of-the-art specialty care for children.

Take the online tour now at umc.edu/towertour.



MADISON



Much like the county, the city of Madison was named for President James Madison. Originally a small railroad junction in 1856, Madison has since developed into some of Mississippi's most increasingly valuable real estate. With a population of around 25,000 and growing steadily, Madison is a flourishing city. Thanks to a boom of population growth in the 90s, the city limits of Madison were expanded in the late 2000s. Madison is known for its uniform commercial architecture, which gives the city a beautifully unique look. Red brick is the staple aesthetic, due to strict building codes and ordinances. Madison continues to see economic and commercial growth as new businesses steadily move to the city. With expanding shopping centers such as Grandview Drive, Colony Crossing, and the Old Madison Station District, Madison continues to see growth and revenue. In fact, Madison has the highest rate of income for cities in Mississippi. High-performing schools like Madison Central High School and lovely public spaces for families and youth like Liberty Park make Madison one of the best, family-friendly and safest locations to raise a family in the state of Mississippi.

MADISON CITY HALL | 1004 Madison Avenue • Madison, MS 39110 • (601) 856-7116 MAYOR | Mary Hawkins Butler
POLICE DEPARTMENT | (601) 856-6111 FIRE DEPARTMENT HEADQUARTERS | (601) 853-2552 MADISON PUBLIC LIBRARY | (601) 856-2749
PARKS & RECREATION | (601) 853-9109 PUBLIC WORKS DEPARTMENT | (601) 856-2749 MADISON CHAMBER OF COMMERCE | (601) 856-7060

RIDGELAND

Though once a simple farm town that specialized in strawberries and pears, Ridgeland's socio-economic base has shifted to a thriving suburban area within the last 200 years while still maintaining its naturalistic charm. Ridgeland boasts one of the fastest-growing areas in Mississippi, proving a bustling home to various shopping centers, restaurants, and attractions. C Spire Wireless, sixth largest wireless provider in the United States, is based in Ridgeland. New ventures arrive every day. Commercial hubs like The Renaissance at Colony Park, Northpark Mall, and the Township will meet any shopping needs, whether you are looking for clothing, food, books, or electronics. Ridgeland is also home to various thriving restaurants. Biaggi's fills the stomach looking for Italian, the Cock of the Walk is everyone's destination for good fried catfish, and Trace Grill makes the best burgers in town. Like spending time outdoors? Ridgeland is famous for its efforts to create a biker-friendly town where multi-use and bike trails wind through the city and the Natchez Trace. If you're looking for recreational parks and various outdoor attractions, Ridgeland has those too. Spend your weekends biking down the Natchez Trace or take your boat out on the Ross Barnett Reservoir, where yearly fun-filled family events like Pepsi Pops take place. Ridgeland is also home to the Mississippi Craft Center, which was named the 2010 Travel Attraction of the Year by Mississippi Tourism Association. With a population approaching 25,000, Ridgeland is one of the most thriving cities in all of Mississippi.



RIDGELAND CITY HALL | 304 Highway 51 • Ridgeland, MS 39157 • (601) 856-7113 MAYOR | Gene McGee POLICE DEPARTMENT | (601) 856-2121
FIRE DEPARTMENT HEADQUARTERS | (601) 856-7004 RIDGELAND PUBLIC LIBRARY | (601) 856-4536 PARKS & RECREATION | (601) 853-2011
PUBLIC WORKS DEPARTMENT | (601) 853-2027 RIDGELAND CHAMBER OF COMMERCE | (601) 991-9996



PROUDLY SERVING
Fresh Gulf Seafood

471 RAILROAD AVENUE FLORA, MISSISSIPPI | (601) 879-7296

Wednesday & Thursday 3 p.m. - 9 p.m. | Friday 3 p.m. - 10 p.m. | Saturday 3 p.m. - 10 p.m. | Sunday 3 p.m. - 9 p.m.

Home Care You Can Count On

Over **100 YEARS** of combined management experience in senior care and service



Mike Davis
Owner



Rhonda Boles
Operations Director



Heather Schuetzle, LPN
Client Care Director



Patricia J. Coward
Community Liaison

We are available wherever you are.

HOME, HOSPITAL, REHAB, RETIREMENT AND ASSISTED LIVING, AND NURSING HOME
 LONG-TERM OR SHORT-TERM NEEDS • 24-HOUR CARE AVAILABLE



Give us a call to discuss your needs today!

601.856.5660

Jackson's Premier Home Care Agency

CovenantCaregivers.com



CANTON



If you have been to Canton, you know it holds a Southern grace that few towns can mimic. Many films have tried to capture its aesthetic on camera, like “My Dog Skip,” “A Time to Kill,” and “O Brother Where Art Thou”. While Hollywood stars come to Canton to film their masterpieces, Canton is locally known as the county seat of Madison County. Also known for its traditional Georgian architecture, much of Canton has been listed on the National Register for Historic Places. During the Civil War, Canton saw many Confederate wounded and thusly has a notable Confederate cemetery. Another historical monument from the past is the Canton Courthouse, which survived the Civil War intact. Built in 1838, the Canton Courthouse is one of the only pre-Civil War courthouses still in operation. Today, Canton is a picturesque city with traditions that pull people from all over, such as the bi-annual Canton Flea Market. Held on the second Thursday in May and October, Canton’s Flea Market is renowned within the South. Another event for which Canton is well-known is its Victorian Christmas Festival. Canton Square is lit up with Christmas lights, blow-up Santas, and carolers from miles around. Shops sell hot chocolate to the crowds and horse-drawn carriages carry children and adults alike through the glittering festivities. Canton is where you can find history, modernity, and festivities all under the same magnolia trees.

CANTON CITY HALL 226 East Peace Street • Canton, MS 39046 • (601) 859-6382 **MAYOR** | Dr. William Truly **POLICE DEPARTMENT** | (601) 859-2121 **FIRE DEPARTMENT HEADQUARTERS** | (601) 859-3112 **CANTON PUBLIC LIBRARY** | (601) 859-3202 **PARKS & RECREATION** | (601) 859-4358 **PUBLIC WORKS DEPARTMENT** | (601) 859-3245 **CANTON CHAMBER OF COMMERCE** | (601) 859-5816

FLORA

Named for former resident Flora Mann Jones, Flora is a small municipality in Madison County and is one of the nicest areas to visit if you are looking for a quiet getaway. With a population of less than 2,000 people, Flora is the embodiment of the small charming hospitable Southern town. Home to the Mississippi Petrified Forest, Flora is a must visit for nature lovers. Complete with a Nature Trail, Museum, Gem Fume, Pavilion, and Gift Shop, the Mississippi Petrified Forest is an excellent educational experience of a natural wonder. Take a hike among prehistoric stone logs, or walk through the museum where you’ll find fascinating facts about Mississippi’s landscape. Flora offers a unique natural experience unlike anything else in the state. The authentic hometown Mississippi ambiance continues with new restaurants like Main Street Café, Bill’s Creole and Steakhouse, and the Blue Rooster. Home to the metro area’s first hydroponic farm, Salad Days farm grows fresh lettuce, tomatoes, and produce year round. Primos Hunting Calls, headquartered in Flora, is a business that makes and ships a plethora of hunting calls worldwide. Flora is the outdoorsman’s paradise. Whether you are there for a lazy afternoon or are a full-time resident, Flora offers an escape from the frantic urban sprawl of the greater Jackson area and welcomes you to step outside and enjoy quaint living.



FLORA CITY HALL 168 Carter St. • Flora, MS 39071 • (601) 879-8686 **MAYOR** | Les Childress **POLICE DEPARTMENT** | (601) 879-8686 **FIRE DEPARTMENT HEADQUARTERS** | (601) 879-9292 **FLORA PUBLIC LIBRARY** | (601) 879-8835 **PARKS & RECREATION** | (601) 879-8686 **PUBLIC WORKS DEPARTMENT** | (601) 879-8686 **FLORA CHAMBER OF COMMERCE** | (601) 879-9376

OUT & ABOUT

CANTON MOVIE MUSEUM:

Revisit the thrilling and astonishing moments from unforgettable films like “A Time to Kill” and “My Dog Skip” in this Hollywood-esque experience. Be sure to make an appointment with Canton Tourism before you go!

ROSS BARNETT RESERVOIR:

Looking for fun on the water? The Reservoir, named for Governor Ross R. Barnett, has boats, picnics, disk golf, and the Cock of the Walk for your enjoyment.

MISSISSIPPI PETRIFIED FOREST:

A National Natural Landmark, the Petrified Forest is Flora’s collection of petrified logs or “stone giants” created over hundreds of years and viewable for anyone looking to step outside and learn about Mississippi’s natural history.

NATCHEZ TRACE PARKWAY:

Running from Natchez to Nashville, this road was once a path travelled by Native Americans and fur traders – now it provides a scenic drive through magnificent trees. Trails for bikers and joggers accompany the road, making it an all-access trip.

MISSISSIPPI SPORTS HALL OF FAME:

This hall of fame celebrates the many accomplished athletes who call Mississippi home. From basketball and football to golf, professional and local, this museum covers them all.

MISSISSIPPI CRAFT CENTER:

The Craftsmen Guild of Mississippi has brought an appreciation of regional crafts to Madison County through the Craft Center, working to preserve, promote, market, educate, and encourage local artistry.

THE RUSSELL C. DAVIS PLANETARIUM:

This domed theater seats 190 people and boasts the widest screen in the state, perfect for sky shows and laser light displays. The Planetarium provides the state’s main large-format theater with regular hours.

JACKSON ZOO:

Looking for outdoor fun? Look no further than the Jackson Zoo, where giraffes, otters, cougars, snakes, and other wild animals thrive. Take a walk through the jungle to see the monkeys or step inside to view the reptiles. The Jackson Zoo brings you wild animal fun while also providing education on wildlife conservation and care.



MISSISSIPPI CHILDREN'S MUSEUM:

One of the newest attractions to join this list is the Children’s Museum, where children have 20,000 square feet of educational and interactive features and games to keep them entertained.

EUDORA WELTY HOUSE & GARDENS:

The famous Mississippian author’s home is a step back into the world of Eudora Welty’s beloved books. This National Historic Landmark provides you with a glimpse of what Eudora Welty’s life was like as well as the chance to stroll through her picturesque gardens.

TWO MISSISSIPPI MUSEUMS:

Jackson’s newest museums opened in December 2017 and include The Museum of Mississippi History and the Mississippi Civil Rights Museum. The interconnected museums will take visitors through the sweep of Mississippi history and the state’s role as ground zero in the U.S. Civil Rights Movement.





CAN'T MISS EVENTS



APRIL

APRIL 29TH - MAY 2ND 2021

The Canton Flea Market is one of the largest and most-attended in the southeast. Held the second Thursday of May and October, thousands descend upon the historic Canton Square for shopping.

UNCONFIRMED DATE

Township Jazz Fest brings the unpredictable sounds of piano and brass to Highland Colony Parkway at The Township. The event draws thousands of people to Ridgeland for good music in an outdoor environment.

APRIL 30TH, 2021 (6PM - 9PM)

Renaissance Fine Arts Festival and Sante South Wine Fest are a combination of events occurring at Renaissance at Colony Park to make for one amazing weekend in the spring. Stop by for some of the best sights, sounds, and tastes the metro has to offer.

APRIL 20TH - 21ST 2021

St. Andrew's Episcopal School hosts **Arts on the Green** for a two-day, fun-filled event where some of the state's most creative artists display and discuss their creations.

MAY

UNCONFIRMED DATE

Pepsi Pops is a family favorite that takes place each year in the Ross Barnett Reservoir. The Mississippi Symphony Orchestra wows crowds of picnic-goers.

MAY 1ST, 2021

The **Natchez Trace Century Ride** brings together over 700 cyclists to jumpstart the cycling season along the Natchez Trace parkway.

JUNE

ESTIMATED JUNE 3RD

Ridgeland hosts its annual heatwave **Classic Triathlon** that brings together people all across the state and southeast for this U.S.A. Triathlon-sanctioned event.

JULY

UNCONFIRMED DATE

The **Championship Hot Air Balloon Fest** is held each summer with events in Ridgeland and Canton. In Ridgeland, the annual **Balloon Glow** is held at Northpark Mall with a live concert performing for crowds. In Canton, watch as the balloons race across the sky.

SEPTEMBER

SEPTEMBER 26TH, 2021

Gluckstadt **Germanfest** has become a fall tradition in Madison County as many make their way to the "Lucky City" and St. Joseph Catholic Church for a day of beer, brats, and fellowship at an authentic German event.

OCTOBER

UNCONFIRMED DATE

The **Scarecrow Car Show** brings classic cruisers together in downtown Madison for a weekend full of family fun. Stop by and look at fast car, classics, scarecrows and more.

NOVEMBER

NOVEMBER 3RD - 6TH 2021

Make plans to stop by **Mistletoe Marketplace** for some of your Christmas shopping in 2018. Hosted by the Junior League of Jackson, this fundraiser attracts thousands across the state for a weekend of shopping and fellowship.

UNCONFIRMED DATE

Beginning in November and ending in December, don't miss seeing why Canton is called the City of Lights. Visit historic downtown Canton for its annual **Christmas Festival**.

PUBLIC SCHOOLS

Madison County is home to two public school districts. The Madison County School District is one of the fastest growing, top-rated districts in the state. With more than 13,000 students, it is the fifth largest school district in the state of Mississippi. Madison County Schools is one of the highest scoring county school districts in Mississippi to achieve an “A” rating based on the statewide accountability model.

Their motto is “Madison County Schools: Mark of Excellence!” They are strongly committed to offering a challenging education, and that commitment is very evident in the programs and opportunities available to our children. Their goal is not only to help each child reach his or her full-

est potential, but also for each child to excel. They strive to maintain open lines of communication between our district and the public we serve.

The Superintendent of the Madison County School District is Charlotte Seals.

The Canton Public School District embodies a tradition of academic excellence which drives the success of each of its more than 3,500 students. The mission of the Canton Public School District, with the full participation of parents and the community, is to enable all students to become analytical thinkers, self-directed lifelong learners, and effective communicators. The district’s goal is to prepare students to continue their education and /or to enter the global

workplace and to participate in society as responsible citizens. Recognizing that children are the community’s greatest asset and value, the district invites parents and the community to join with schools in serving as a perpetual bridge for the development of students’ character. Further, the district believes it takes all parties working together toward the enhancement of students’ ability to master data, interpret knowledge, and apply the practical principles of their mastery. Canton Public School District leaders fulfill the district’s mission of “Elevating Minds and Empowering Possibilities” by working together. “Together Tigers Win!”

The Superintendent of the Canton Public School District is Gary P. Hannah.



MADISON PUBLIC SCHOOLS

HIGH SCHOOLS:

MADISON CENTRAL HIGH SCHOOL
1417 Highland Colony Parkway
Madison, MS 39110
(601) 836-7121
Principal Sean Brewer

GERMANTOWN HIGH SCHOOL
200 Calhoun Parkway
Madison, MS 39110
(601) 859-6150
Principal Wesley Quick

RIDGELAND HIGH SCHOOL
586 Sunnybrook Road
Ridgeland, MS 39157
(601) 898-5023
Principal Keith Fennell

VELMA JACKSON HIGH SCHOOL
2000 Loring Road
Camden, MS 39045
(601) 468-2531
Principal Carey Kirkland

NINTH GRADE:

ROSA SCOTT
200 Crawford Street
Madison, MS 39110
Principal Brent Cofield

MIDDLE SCHOOLS:

GERMANTOWN MIDDLE SCHOOL
202 Calhoun Parkway
Madison, MS 39110
(601) 859-0376
Principal Chris Perritt

**SHIRLEY D. SIMMONS
MIDDLE SCHOOL**
820 Sulphur Springs Road
Canton, MS 39046
(601) 855-2406
Principal Kelvin Griffin

MADISON MIDDLE SCHOOL
1365 Mannsdale Road
Madison, MS 39110
(601) 605-4171
Principal Leatha Phillips

OLDE TOWNE MIDDLE SCHOOL
210 Sunnybrook Road
Ridgeland, MS 39157
(601) 898-8730
Principal Crystal Chase

ELEMENTARY SCHOOLS:

CAMDEN ELEMENTARY
4784 Hwy 43 North
Camden, MS 39045
(662) 468-2833
Principal Fannie Green

EAST FLORA ELEMENTARY
759 Hwy 22 East
Flora, MS 39045
601-879-8724
Principal Capucine Robinson

HIGHLAND ELEMENTARY
330 Brame Road
Ridgeland, MS 39157
(601) 853-8103
Principal Serenity Luckett

MADISON STATION ELEMENTARY
261 Reunion Parkway
Madison, MS 39110
(601) 856-6246
Principal Martha Hanna

MADISON CROSSING SCHOOL
300 Yandell Road
Canton, MS 39046
(601) 898-7710
Principal Terri Thornton

MANNSDALE ELEMENTARY
443 Mannsdale Road
Madison, MS 39110
(601) 879-0309
Principal Dr. Emily Mulhollen

MANNSDALE UPPER ELEMENTARY
371 Mannsdale Road
Madison, MS 39110
(601) 879-3433
Principal Debra Houghton

ANN SMITH ELEMENTARY
306 Pear Orchard Drive
Ridgeland, MS 39157
(601) 856-6621
Principal Karen Harness

MADISON AVENUE ELEMENTARY
1199 Madison Avenue
Madison, MS 39110
(601) 856-2951
Principal Melissa Philley

**MADISON AVENUE
UPPER ELEMENTARY**
1209 Madison Avenue
Madison, MS 39110
(601) 856-6609
Principal Kim Brewer

LUTHER BRANSON ELEMENTARY
3903 Hwy 16 East
Canton, MS 39046
(601) 859-2743
Principal Jessica Smith

OTHER:

**MADISON CAREER &
TECHNICAL CENTER**
1633 West Peace Street
Canton, MS 39054 601-859-6847
Principal Blaise King

ACADEMIC OPTIONS CENTER
1633 West Peace Street
Canton, MS 39045
(601) 859-0367
Principal Brendon Bell

CANTON PUBLIC SCHOOLS

HIGH SCHOOL

CANTON HIGH SCHOOL
634 Finney Road
Canton, MS 39046
(601) 859-5325
Principal Dr. Pamela Self

NINTH GRADE:

CANTON NINTH GRADE ACADEMY
634 Finney Rd
Canton, MS 39046
(601) 859-5325
Principal Kari Johnson Walton

MIDDLE SCHOOL

HUEY L. PORTER MIDDLE SCHOOL
551 Finney Road
Canton, MS 39046
(601) 407-1811
Principal Michael Ellis

NICHOLS MIDDLE SCHOOL
529 N. Mace Street
Canton, MS 39046
Principal Tina Manning

ELEMENTARY

CANTON ELEMENTARY SCHOOL
740 East Academy Street
Canton, MS 39046
(601) 859-2400
Principal Shalondia Washington

GOODLOE ELEMENTARY SCHOOL
551 Finney Road
Canton, MS 39046
(601) 407-1809
Principal C. Monique Lastique

MCNEAL ELEMENTARY SCHOOL
364 Martin Luther King Drive
Canton, MS 39046
(601) 850-3654
Principal Shannon Whitehead

**REUBEN B. MYERS CANTON SCHOOL OF
ARTS & SCIENCES**
357 Old Yazoo City Road
Canton, MS 39046
(601) 855-7819
Principal Alpha Myers

OTHER

CANTON CAREER CENTER
487 N. Union Extension
Canton, MS 39046
(601) 859-3984
Director Rodney Harris

**CANTON EDUCATIONAL
SERVICES CENTER**
(601) 859-5010
Principal Koche Anderson

ST. JOSEPH CATHOLIC SCHOOL



Celebrating 150 Years of Catholic Education



WWW.STJOEBRUINS.COM

FOR MORE INFORMATION VISIT OUR WEBSITE OR CONTACT
TRICIA HARRIS 601-898-4803 OR THARRIS@STJOEBRUINS.COM

PRIVATE & PAROCHIAL SCHOOLS



MADISON RIDGELAND ACADEMY:

This college preparatory institution was founded in 1969, and is one of the highest performing schools within the Mississippi Association of Independent Schools. It is a devoted Christian Institution. The school may have 1135 students in grades K3-12th, but it boasts a student to faculty ratio of 7:1. It is a 4A school with multiple championship teams in boys basketball, track, archery, and more.

Termie Land | **Head of School**

Greg Self | **High School Principal / Associate Head of School**

7601 Old Canton Road | Madison, Mississippi 39110 | 601.856.4455



ST. ANDREW'S EPISCOPAL SCHOOL:

With the PK3 to 4th grade campus located on Old Canton Road in Jackson, and the 5th grade to 12th grade campus on Old Agency Road in Ridgeland, St. Andrews is seemingly in two places at once! This College Preparatory School was established in 1947 and boasts the highest number of National Merit Scholars in the entire state. Through its Forward Saints Initiative -the largest financial campaign in school history- it continuously builds up its Campuses to best provide for its current and future generation of students. They are direct rivals with Saint Joseph in Madison.

Tom Sheppard | **Head of School**

South Campus PK-3 to Grade 4 |
4120 Old Canton Road | Jackson, Mississippi 39216 | 601.987.9300

North Campus Grades 5 to 12
370 Old Agency Road | Ridgeland, Mississippi 39157 | 601.853.6000



St. Joseph
Catholic School

ST. JOSEPH CATHOLIC SCHOOL:

Saint Joseph Catholic School offers a college preparatory curriculum to a diverse community of students in grades 7-12, committed to academic excellence and the values taught by Jesus Christ. We offer 20 varsity sports, a top-notch fine arts program, and boast the only high school on campus radio station in the Jackson area. We are proud to have multiple teachers who have been honored with national awards of excellence. Founded in 1870 by the Sisters of Mercy, Saint Joseph is the only Catholic secondary school serving the Jackson metro area. For more information call 601-898-4800 or visit www.stjoebruins.com. Catch the Spirit at St. Joe!

Dena Kinsey | **Principal**

308 New Mannsdale Road | Madison, Mississippi 39110 | 601.898.4800



ST. ANTHONY CATHOLIC SCHOOL:

Right in St. Joseph's backyard is Saint Anthony. Established in 2009, the school is celebrating its ten year Anniversary this year. It is the 2nd-newest Private School in the greater Jackson Area, with 260 students and a 8:1 Student-Teacher Ratio. This elementary school is part of the Whole Schools Initiative, which integrates fine arts into the the learning curriculum to help students retain information. The school also puts emphasis on spiritual growth as its students go through elementary and transition into middle and high school.

Jim Bell | **Principal**

1585 New Mannsdale Road | Madison, Mississippi 39110 | 601.607.7054



maximize *your* potential. find *your* path.

DISCOVER YOUR POSSIBILITIES.

Schedule your tour: 601.939.8611 *Serving grades six through twelve* [f/jacksonprep](https://www.facebook.com/jacksonprep) [@jacksonprep](https://www.instagram.com/jacksonprep) [@thejacksonprep](https://www.instagram.com/thejacksonprep)

DISCOVER THE EXCITEMENT



Pre-K3 through 6th Grade • STEM Accredited • Arts-Integrated Education • Faith-Based Learning
Enrolling New Students for 2021 - 2022 • Schedule Your Tour Today
stanthonyeagles.org • 601.607.7054



ST. RICHARD CATHOLIC SCHOOL:

St Richard Catholic School was established in 1953 and is a feeder elementary school for Saint Joseph in Madison. It has about 334 students from grades PK-3 to 6th Grade, and is directly connected to Saint Richards Catholic Church, one of the largest Catholic Churches in the Metro Jackson Area. The School is right off of I-55 South in Jackson, close to Fondren and even closer to Highland Village. The school provides academically challenging courses in a safe, Catholic Environment.

Jennifer David | **Principal**

100 Holly Drive | Jackson, Mississippi 39206 | 601.366.1157



CHRIST COVENANT SCHOOL:

This Presbyterian school was formed in 2002 branching off of Pear Orchard Presbyterian Church. It has 335 students from grades PK-8th grade and a 12:1 Student to teacher ratio. They are a part of the Mississippi Association for Independent Schools and have devoted athletic and spiritually centered academic programs. It has been committed to excellence and committed to Christ for the last 17 years, and will continue to do so in the future.

Cathy Haynie | **Head of School**

752 South Pear Orchard Street | Ridgeland, MS 39157 | 601.978.2272



JACKSON ACADEMY:

Located in Jackson, Jackson Academy is about a ten minute drive from both Jackson Prep and St Joseph Catholic School. Established in 1959, JA is Mississippi's largest independent school and have 1,200 students from grades 9-12. The student to teacher ratio is 7:1 and the average ACT score in the Graduating class is a 28. This college preparatory school not only provides academically-challenging curriculum to its students but premier sports programs as a part of the Mississippi Association for Independent Schools.

Jack Milne | **Head of School**

4908 Ridgewood Road | Jackson, Mississippi 39211 | 601.362.9676



JACKSON PREPARATORY SCHOOL:

This school serves grades 6-12 and is one of the Jackson Areas premier preparatory schools. Since its establishment in 1970, it has produced over 550 National Merit Semifinalists, and has turned over notable alumni such as Kathryn Stockett (Class of 1987), Author of The Help. It has strong athletics, with its football team winning its 7th consecutive football championship as a part of the MAIS.

Lawrence M. Coco | **Head of School**

3100 Lakeland Drive | Flowood, Mississippi 39232 | 601.939.8611



FIRST PRESBYTERIAN DAY SCHOOL:

This school is located in the heart of Jackson and opened in 1965 by the First Presbyterian Church of Jackson. This school serves a Christian-centered education to its roughly 700 students from grades for 3K to sixth grade. It is also a part of the Mississippi Association of Independent Schools and the Southern Association of Independent Schools. Its graduates move into greatness academically and outside of the classroom. They also grow and develop a heart of service for the surrounding community.

Gary Heading | **Head of School**

1390 N. State Street | Jackson, Mississippi 39202 | 601.355.1731



CANTON ACADEMY:

Canton Academy is school that is outside the rustle and bustle of everyday Jackson life. It is about ten minutes outside of Madison, but still provides a sophisticated education, supported by Christian Roots. They are accredited by the Mississippi Association for Independent Schools (MAIS) and the Southern Association of Schools (SAIS). In their fine arts program, they offer pottery, drawing, sculpting, and painting.

Ron Jurney | **Head of School**

1 Nancy Drive | Canton MS 39046 | 601.859.5233



TRI-COUNTY ACADEMY:

This school was established in 1970 and provides instruction to students in Pk3 to Grade 12. It utilizes the A Beka program, which does wonders in critical learning and thinking development. There are courses on the Bible, accounting, sociology, speech and creative writing which all help to provided a foundation education on the collegians level. They also have strong athletics, with a baseball team that won the 2A state championship in 2016.

Dr. Tom Taylor | **Headmaster**

400 Cox Ferry Road | Flora, Mississippi 39071 | 601.879.8517



NEW SUMMIT SCHOOL:

Located in Jackson and established in 1997, this school takes a individualized approach with its students, developing individualized learning plans for each student. This made possible in part with a student body comprised of roughly 200 students from Kindergarten through 12th grade. The school takes an approach that is not inferior, but different to the metro area's other private schools. New Summit seeks to become the leader in Mississippi for its education program for students with diverse learning styles.

Jake Winter | **Administrator**

1417 Lelia Drive | Jackson, Mississippi 39216 | 601.982.7827

WE WILL FIND A
WAY
—OR WE WILL—
Make One.



**THERE'S A REASON
THE ST. ANDREW'S
MOTTO IS "WE WILL
FIND A WAY OR WE
WILL MAKE ONE."**

St. Andrew's is the leader in flexible learning, with the technology and creativity in place to provide an outstanding educational experience on campus or in virtual classrooms.

No matter what this school year brings, St. Andrew's will ensure your student has the best possible learning experience.



A 5th grade student writes robotics computer code in the Discovery Center tech lab.



LET ST. ANDREW'S FIND OR MAKE THE WAY FOR YOUR STUDENT. VISIT GOSAINTS.ORG.

FPDS

First Presbyterian Day School



ENROLLING NOW FOR THE 2021-2022 SCHOOL YEAR!

CALL TODAY OR VISIT
FPDS.ORG TO SCHEDULE A TOUR.

1390 NORTH STATE STREET
JACKSON, MISSISSIPPI 39202
601.355.1731 | FPDS.ORG



SAINT RICHARD
CATHOLIC SCHOOL

STRIVE

to be unique

Join us Fall 2021

601.366.1157 | strichardschool.org | #WeRStR



The
MONTESSORI
ACADEMY of JACKSON

The MONTESSORI METHOD

Begin your child's educational journey
where purposeful learning ignites a lifelong
passion for knowledge.

We believe that every individual is born with not only the desire to learn, but also unlimited potential. The Montessori Academy is an inclusive, joyful community that fosters self-discovery. We inspire children to embrace and challenge the world with compassion, resilience, and courage.

Schedule a tour today at **MAOJ.org**

1525 LELIA DRIVE JACKSON MS 39216 | 601.345.1431 | MAOJ.ORG

HIGHER EDUCATION

HOLMES COMMUNITY COLLEGE

Originally meant to focus on agriculture, Holmes Community College has come a long way from its Goodman roots, now featuring campuses in Ridgeland and Grenada. Starting off as a high school in 1911, it officially transitioned from a junior college to a community college in the 1989 school year. It allows students to earn associate of arts degrees, certificates, and/or transferability into four-year institutions such as Mississippi State in Starkville or the University of Mississippi in Oxford. Students who even score a 20 or higher on the ACT can qualify for a full tuition scholarship.

Dr. Jim Haffey | **President**

412 West Ridgeland Avenue
Ridgeland, MS 39157
601.856.5400

BELHAVEN UNIVERSITY

Founded in 1883, Belhaven is a Christian college offering 70 areas of study for its academic majors and concentrations, as well as a plethora of Master Degree Programs. Its science curriculum is one of only two Christian universities recognized by the White House STEM initiative. It is one of only 36 universities nationally accredited in each of the major arts — music, theatre, visual art and dance. It also has 15 NCAA Division 3 sports teams. All subjects are taught from a Christian Worldview perspective with an intended mission for its students to serve Jesus Christ in their career, personal relationships, and in the world at large. The school has a Madison campus.

Dr. Roger Parrot | **President**

1500 Peachtree Street
Jackson, Mississippi 39202
601.968.5940



MILLSAPS COLLEGE

Millsaps College, founded in 1890, is one of the most prestigious colleges in the metro, turning out Rhodes scholars and having double the national acceptance rate for students going into medical school. This United Methodist institution is also known for its writing program, with a yearly writing workshop in July (McMullans Young Writers Workshop or MYWW) that attracts high school students from around the southeastern United States. The school boasts a 9:1 student to teacher ratio and an average class size of 14 students, with all courses being taught at the honors level. It has 18 NCAA Division 3 Athletics, and roughly 1200 students.

Dr. Rob Pearigen | **President**

1701 North State Street
Jackson, Mississippi 39210
601.974.1000

TOUGALOO COLLEGE

Tougaloo College is an institution just south of Ridgeland and 2 miles west of the Northpark Mall. It is ranked as one of the best colleges in the Southeastern United States by the Princeton Review and US News and World Report. It is also ranked as one of the Best Historically Black institutions in the country. It has historically churned out over 40 percent of Mississippi's African American attorneys and educators. The college also offers Bachelor of Arts and Bachelor of science degrees in 29 majors in the areas of education, humanities, social science and natural science. It boasts a student to faculty ratio of 15:1, and has a diverse faculty who 70 percent hold terminal degrees in their fields.

Beverly Wade Hogan | **President**

500 West County Line Road
Tougaloo, Mississippi 39174
601.977.7700

MISSISSIPPI COLLEGE

Mississippi College is the oldest institution of higher education in Mississippi, being founded in 1826. It is the second-oldest Southern Baptist university in the United States. They were the first institute of higher education to issue a medical degree to a woman, and are renowned for their pre-med and nursing programs to this day. They are also known for their science program, with its graduates going on to teach at College preparatory schools in the area such as Saint Joseph and Jackson Prep. To this day though, the college's proudest title is "A Christian University."

Dr. Blake Thompson | **President**

200 South Capitol Street
Clinton, Mississippi 39056
601.925.3000



HOLMES COMMUNITY COLLEGE

HOLMES HAS THE KEYS

SCORE A 20 ON THE ACT?
YOU COULD COME TO HOLMES TUITION-FREE!

If you make a 20 on the ACT, you could qualify for a full tuition scholarship at Holmes! All you have to do is remain a full-time student and maintain a 3.0 GPA, and the cost of your tuition could be on us!



TO GET YOU GOING

For more info call
1-800-HOLMES-4
OR VISIT **HOLMESCC.EDU**

Holmes Community College does not discriminate on the basis of race, color, religion, national origin, gender, disability, or age in its educational programs and activities, employment, or admissions. The following person has been designated to handle inquiries and grievances regarding non-discrimination, compliance policies, and procedures for the College: Compliance Officer, (662) 472-9429. Written inquiries may be e-mailed to: compliance@holmescc.edu or sent to: Compliance Office, P.O. Box 369, Goodman, MS 39079.

HEALTHCARE



MERIT HEALTH MADISON

Merit Health Madison is conveniently located right off of I-55 Exit 118 B in Canton. The 113,000 square foot state of the art facility was opened in 2011. It has 67 staffed beds and offers 24/7 emergency care, labor and delivery, surgery, orthopedics, intensive care, neurology, and a plethora of outpatient procedures. It is known for its superior care and it was recognized as Hospital of the Year by the Mississippi Nurses association. There are other Merit Health locations in the metro area; one in Jackson, Flowood, and Clinton. There is an additional women's hospital in Flowood, and it is the only Women's hospital exclusively for women in the state of Mississippi. The Hospital is best known for its convenient care and its fast ER service times.

Merit Health Internal Medicine (Madison)

163 River Oaks Drive Suite 201 | Canton, Mississippi 39046 | 601.855.4717

Merit Health Central

1850 Chadwick Drive | Jackson, Mississippi 39204 | 601.376.1000

Merit Health Bariatrics

1040 River Oaks Drive Suite 304 | Flowood, Mississippi 39232 | 601.936.1170

Merit Health Woman's Hospital

1026 North Flowood Drive | Flowood, Mississippi 39232 | 601.932.1000

Merit Health Cardiovascular Care

732 Clinton Parkway | Clinton, Mississippi 39056 | 601.376.1394

BAPTIST HEALTH SYSTEMS

Back in 1908, two area physicians converted a home into the first hospital in Jackson. Today, 111 years later, it has grown from a two-doctor clinic to a hospital with over 560 staffed beds, multiple clinics, and other affiliated hospitals throughout the state. It is a hospital that delivers its superior services within a Christian environment. It receives patients not just from all 82 counties but from all 50 states including the District of Columbia. The Hospital has over 3000 employees, 535 physicians, and 100 volunteers. In 2016, Baptist Healthplex earned the top 2% in the Nation in Patient experience award.

As a part of Baptist Health systems, The Madison Healthplex performance training center is located in Madison off of Highway 463 and Highland Colony parkway. The Orthopedic Center and Mississippi Sports Medicine has clinical space inside of the facility and physical therapy is provided. Despite which location you go to, Baptist Health stems offers a patient portal that allows patients to review their medical history and record online.

Baptist Health Systems

1225 North State Street | Jackson, Mississippi 39202
601.968.1000

Madison Healthplex Performance Center

501 Baptist Drive | Madison, Mississippi 39110
601.856.7757





ST. DOMINIC'S HOSPITAL

This hospital was established in 1946 after the arrival of 7 Dominican Sisters from Springfield, Illinois to assume operation of the Jackson Infirmary. In May of 1954, a new hospital was built on top of a Hill on Lakeland Drive, where it still is today. St. Dominic's is known for its Cancer center and the Mississippi Heart Institute. The Hospital has 571 beds staffed with roughly 3,000 employees and nearly 500 physicians and specialists. It was ranked the No.1 Hospital in the Jackson Metro Area by Health Grove. Outside of the Hospital, there are MEA medical clinics (A Part of Saint Dominic's) all around the Jackson Metro Area.

It makes sure that healing ministry is available to all of its patients through the guidance of the Catholic Church. They were the first to develop a continuing care retirement community in the state of Mississippi with St. Catherine's Village in Madison. Using compassionate care grounded in the Christian Faith and technology, St. Dominic's strives to provide competent care for those in the Jackson Metro Area and Beyond.

St. Dominic's Hospital

969 Lakeland Drive | Jackson, Mississippi 39216
601.200.2000

UNIVERSITY OF MISSISSIPPI MEDICAL CENTER

Established in 1955, the University of Mississippi Medical Center is the state's only academic health science center. More than 3,000 students are enrolled in UMMC's seven health science schools: medicine, nursing, dentistry, health-related professions, graduate studies, population health and pharmacy. UMMC provides wide-ranging patient care programs through three specialized hospitals, including Children's of Mississippi, the state's only children's hospital, Wiser Hospital for Women and Infants and the Conerly Critical Care Hospital, and University Hospital. UMMC offers the only Level I trauma center, the only Level IV neonatal intensive care unit, and the only organ transplant programs in the state. University Physicians, the faculty group practice of the School of Medicine, includes about 500 doctors, many of them among leaders in their field, who care for patients in the hospitals and clinics on campus, around the Jackson metro area, and in outreach clinics around the state. UMMC includes two community hospitals, UMMC Holmes County and UMMC Grenada. With more than 10,000 full- and part-time employees, UMMC is one of the largest employers in Mississippi. The Medical Center continues to grow, having most recently opened the \$180 million Kathy and Joe Sanderson Tower at Children's of Mississippi in November 2020.



15+ primary care locations.
Same-day appointments.
844-MSMERIT



Because there's **Merit**
in convenient care.

Merit Health Medical Group makes it easier to see a primary care provider – quickly. Just call 844-MSMERIT. Most calls will result in a same-day appointment with a physician or a nurse practitioner at one of our 15+ primary care locations. Walk-ins are welcome, too. If you or a family member needs to see a doctor fast, think Merit Health Medical Group.

Schedule an appointment online, anytime,
with select providers: [MyMeritDoctor.com](https://www.MyMeritDoctor.com)



PARKS & RECREATION

RIDGELAND:

Located on McClellan Drive near Hwy 51, Hite B. Wolcott Park offers a wide variety of facilities such as baseball and softball fields, an in-line hockey rink, and a playground. Right around the corner is the Ridgeland Tennis Center, which provides Ridgeland with a 17-court tennis facility run by tennis professionals. The Ridgeland Tennis Center offers men and women's locker rooms as well as a tennis pro shop to accommodate all your tennis-related needs.

Friendship Park is a multi-purpose park with its neighborhood clearly in mind. Located at 475 Lake Harbour Drive, this family-oriented park comes with a large pavilion, walking/jogging trail, fitness court, playground equipment, and restroom facilities. The Pavilion and trails are lit for your convenience. The Pavilion can be rented for parties.

Ridgeland's signature park, Freedom Ridge Park, is located at 235 School Street. This large 50-acre athletic facility is perfect for a family outing. Freedom Ridge Park sports fields such as soccer and softball as well as playgrounds and walking trails. Freedom Ridge Park has all the desired elements of a city park. The park also has plenty of pavilions where families can enjoy snacks and beverages from the concession stands.

If you want something closer to the water, visit the Old Trace Park. Situated right next to the Ross Barnett Reservoir, the Old Trace Park is an open space where families can come and enjoy the wonderful scenery of the Reservoir. Old Trace Park also hosts various different events thought the year, including the annual Dragon Boat Regatta.

If you enjoy biking, Ridgeland is the place for you. With over 122 miles of trails which are used for biking, running, or walking, Ridgeland has received the Bicycle Friendly Community Bronze Award.

MADISON:

At the heart of the City of Madison lies its signature park, Liberty Park. Home to Rosa Scott Ninth Grade School, St. Paul's African Methodist Episcopal Church, and various softball and soccer fields, Liberty Park is one of the central hubs of the Madison community. Liberty Park offers a playground, batting cages, two beach volleyball courts, and a concession stand. Due to its centrality, Liberty Park hosts various community events throughout the year, including Relay-For-Life. It also contains an archery range.

Further back into the residential area of the city of Madison is Strawberry Patch Park. This seven-mile quaint neighborhood park is known for its scenic atmosphere. Located off Old Canton Road, across the street from Madison Ridgeland Academy, Strawberry Patch Park offers a walking trail that winds its way around a one-mile lake, playground equipment, and various picnic areas. In the corner of the park sits the beautiful Strawberry Patch Chapel.

CANTON:

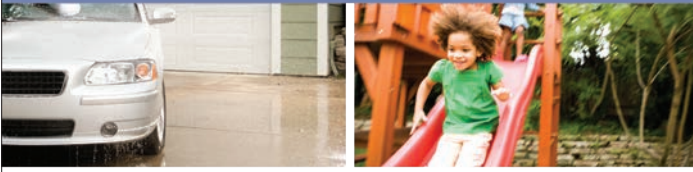
The city of Canton offers two locations that host sporting and community events: the Canton Sports Complex and the Canton Multipurpose & Equine Center. Each has been used for sporting events in the past; however, the Canton Multipurpose & Equine Center has sponsored various community events such as concerts and rodeos. Its 2016 calendar included events with the Mississippi Reigning Horses Association and the Magnolia Cutting Horse Association. A balloon glow also took place in July 2016 with great success.

OTHER:

At the Madison Ridgeland Youth Club, numerous youth sports are offered year-round. With leagues in baseball, basketball, football, soccer, and cheerleading, the Madison Ridgeland Youth Club provides children ages 5 to 14 an opportunity to compete in the many parks within both municipalities. While most leagues compete on a local level, some teams play up to a national and state level. Registration for 2017 spring baseball started in December; registration for 2017 spring softball begins January 1. For more information about the Madison Ridgeland Youth Club, visit mryouthclub.com.



If you've got it,
we protect it.



Steele Dehmer
Msurance, Inc.
160 E Peace St
Canton, MS 39046
601-624-7833
steele@msurance.org
www.msurance.org

AUTO
HOME
CLASSIC CAR
MOTORCYCLE
RV
BOAT
CONDO
RENTERS
LANDLORD PROTECTION
UMBRELLA

Safeco Insurance™

A Liberty Mutual Company

Safeco Insurance, with a principal place of business in Boston, Massachusetts.
©2013 Liberty Mutual Insurance

Dr. Brown
and his staff
would like to
welcome you
to Madison
County!

Let us give you a
beautiful smile.



Dr. Brown's SMILES BY DESIGN

Eugene C. Brown, Jr., D.D.S., M.S.

5800 Ridgewood Road
Jackson / 601-957-1711

125 Jones Street
Madison / 601-853-0303

Orthodontics Exclusively

www.dreugenebrown.com

DAMON SYSTEM More than straight teeth **CareCredit** **invisalign**

Dedicated to Your Care

At **Mississippi Baptist Medical Center**, we're passionate about delivering the right care at the right time, with your safety and comfort in mind.

That's why we're consistently recognized as a regional and national leader in providing safe, patient centered care.

Because we know, the first step to getting well is getting better care.

 **BAPTIST**®

baptistonline.org/mbmc

Get Better.

YOUR
FAVORITE

— PIZZA —
— SANDWICH —
— SALAD —

TAKEOUT
SPOT



Skip the line,
order online:
eatbasils.com

Basil's
KILLER EATS

Regular & Plus Sizes
available at Shayna's



707 Beau Pre' Dr. / Ste. A / Ridgeland, MS
(769) 300.2519 / www.shaynasboutique.com



**PROTECT
YOUR
HOME
WITH A
QUALITY
ROOFING
SYSTEM!**

Proudly serving
Madison County.
Free Inspections.

601-559-1758 + PRO-SHIELDROOFS.COM

DINING



STEAKS & SOUTHERN STAPLES:

There is nothing more classic and appreciated than a steak in the south to wrap up a long day or week. Each of these steakhouses offer charred perfection with their twist of classic sides. All are a must visit in Madison County.

ELY'S RESTAURANT & BAR

115 W. Jackson St. | Ridgeland | (601) 605-6359

TICO'S STEAK HOUSE

1536 E. County Line Rd. | Ridgeland
(601) 956-1030

BILL'S CREOLE & STEAK DEPOT

471 Railroad Ave. | Flora | (601) 879-7296

TWO RIVERS RESTAURANT

1537 W. Peace St. | Canton | (601) 859-9999

MM SHAPLEY'S RESTAURANT

868 E. Centre St. | Ridgeland | (601) 957-8000

KOESTLER PRIME

1000 Highland Colony Pkwy. | Ridgeland | (601) 957-3753

SOUTHERN FRIED & TRUE:

From plate lunches to po'boys and even beignets these restaurants will fuel you up and fill your soul with all the tried and true southern dishes.

MAMA HAMIL'S

480 Magnolia St. | Madison | (601) 856-4407

TRACE GRILL

574 Hwy. 51 F | Ridgeland | (601) 607-7027

PRIMOS

515 Lake Harbour Dr. | Ridgeland | (601) 898-3400

DAVE'S TRIPLE B

4822 Route 22 (Main Street) | Flora | (601) 952-4222

IN & OUT:

Whether you want to sit and stay a while or grab a quick bite and go these are a couple of our local favorites.

BASIL'S

1000 Highland Colony Parkway | Ridgeland | (601) 790-1919

FANCY & FINE:

Madison County is home to some of the finest restaurants in the state of Mississippi. These restaurants offer an immaculate array of fresh and phenomenal cuisine all made in unique perfection.

LOCAL 463

1000 Highland Colony Parkway | Ridgeland | (601) 707-7684

STRAWBERRY CAFE

107 Depot Dr. | Madison | (601) 856-3822

CAET

1000 Highland Colony Pkwy Suite 9015 | Ridgeland | (601) 321-9169

BURGERS:

You might be able to find a burger many places, but you'll never find one like these.

BURGERS & BLUES

1060 E. County Line Rd. | Ridgeland | (601) 899-0038

BLUE ROOSTER

4822 Hwy. 22 | Flora | (601) 879-3289

WATER A VIEW:

The views of sprawling water add to the dining experience of these two restaurants with our favorite views.

THE MERMAID CAFE

652 Bellevue Dr. | Madison | (601) 605-8764

COCK OF THE WALK

141 Madison Landing Cir. | Ridgeland | (601) 856-5500

SOUTH OF THE BORDER:

Ándale! Whether you want authentic or a twist on the classics these restaurants offer stellar south of the border cuisine.

TAQUERIA LA GUADALUPE

6537 Old Canton Rd. | Ridgeland | (601) 206-7776

1856 Main St. | Madison | (601) 853-8538

SOMBRA MEXICAN KITCHEN

140 Township Ave., Ste. 100 | Ridgeland | (601) 707-7950

CIAO ITALIA!

Classic pastas, pizzas and all things Italian, these are our favorites to fill you up!

FRATESI'S

910 Lake Harbour Dr. | Ridgeland | (601) 956-2929

BIACCI'S

970 Highland Colony Pkwy. | Ridgeland | (601) 354-6600

AMERIGO

6592 Old Canton Rd. | Ridgeland | (601) 977-0563

MAD OVER MEDITERRANEAN:

As fresh and fabulous as the views from high above the Mediterranean Sea, Madison County's Mediterranean options are as rich as the culture that brought them here.

KRISTOS

971 Madison Ave. | Madison | (601) 605-2266

KRILAKIS

297 W. Jackson St. | Ridgeland | (601) 790-9463

VASILIOS GREEK CUISINE

828 Hwy. 51 | Madison | (601) 853-0028

ASIAN:

These restaurants offer some of the best sushi, hibachi and asian cuisine in the metro area, but if you want step outside of the sushi, give Thai a try.

FUSION JAPANESE & THAI CUISINE

1030 Hwy. 51 | Madison | (769) 664-7588

NAGOYA

111 Colony Crossing Way | Madison | (601) 856-5678



SHOPPING

CANTON HISTORIC SQUARE:

For a change of scenery, take a drive to the Canton Historic Square where you'll find a one-of-a-kind retail experience. Often considered to be one of Mississippi's best-kept shopping secrets, Canton's Historic Square combines the character of the traditional Southern town with quality of boutique shopping. New shops are opening with increasing frequency as more areas around town are renovated. Once you've spent some time exploring the Historic Square's shops, check out some of Canton's museums, such as the Canton Movie Museum. Home to one of only seven unaltered, pre-Civil War courthouses, Canton's rich history is on display around every corner and serves as the perfect atmosphere for an afternoon shopping adventures.

OLD MADISON STATION DISTRICT:

Nearby Madison's famous Red Caboose, you'll find a variety of local shopping options. Persnickety has a wide range of products and Inside Story utilizes two stories of a Victorian house for its emporium of gifts and accessories. This distinctive shopping center is a great place to find jewelry, home decorations and furnishings, purses, and a wide selection of accessories. Situated off of the City of Madison's Main Street next to the train tracks, the Old Madison Station District is in a conveniently located area and provides an exceptional shopping experience.

GRANDVIEW SHOPPING DISTRICT:

This amalgamation of big-brand favorites has become one of the major hot spots for large chains in Mississippi. This well-located shopping center is located right off Interstate 55 in Madison and houses major chains such as Miskelly's, Ulta, Wal-Mart, Dicks Sporting Goods, Best Buy, PetCo and Sam's Club. Check out Madison's Malco Grandview movie theater or swing by Chick-Fil-A or Backyard Burger for dinner. With all of this and more, the Grandview Shopping District is a great one-stop-has-it-all shopping experience.

COLONY CROSSING:

In case two large shopping centers haven't got you covered, Colony Crossing provides another powerhouse retail center in Madison. With everything from French manicures to gourmet cupcakes, Colony Crossing offers a wide range of unique options for shoppers. Located on the opposite side of Interstate 55 from Grandview, Colony Crossing is also a convenient place to visit Kroger's to buy groceries. Try Nagoya's Sushi and Hibachi, or Sal and Mookie's for fine dining. With a range of stores that can satisfy even the pickiest of shoppers, Colony Crossing is the ideal place for a day or night out on the town.

JACKSON STREET DISTRICT:

Located near the railroad tracks in the heart of the city of Ridgeland, the Jackson Street District is one of Ridgeland's most iconic shopping areas. With a contemporary blend of both modern and classical architecture, this shopping district offers a plethora of boutiques and restaurants that will surely please any shopping connoisseur. Ely's Restaurant is a local favorite. M7 Coffeehouse is a favorite spot to sit and sip. Also offering a handful of specialty stores, the Jackson Street District is a quaint shopping experience that you will not want to miss.

RENAISSANCE AT COLONY PARK:

One of the epicenters of the retail scene in Ridgeland, Renaissance at Colony Park has become the premiere shopping location in the Madison County area. Situated off I-55's Old Agency Road exit, Renaissance offers the most luxurious shopping experience in the state. Among its lavish old world European architecture, Renaissance is the perfect place to spend the day browsing various shops and boutiques such as Anthropologie, J. Crew, Brooks Brothers, and more. Francesca's and Charming Charlie's are two more options for your outfit needs. Visit Another Broken Egg for a gourmet brunch that will dazzle your taste buds. For lunch, grab a bite at the critically-acclaimed Five Guys Burger and Fries. Biaggis and P.F. Chang's round out the day as potential dinner options, along with fine dining establishments such as Koestler Prime. Smooth jazz combined with the magnificent fountain and lights strung up between buildings creates a romantic atmosphere for the night. Renaissance has it all.



TRACE STATION:

Situated at the corner of Highway 51 down the road from the Jackson Street District, the Trace Station is another boutique-friendly shopping center in the City of Ridgeland. If you are looking for unique gifts, fine art, gourmet food, or antiques, Trace Station is the place for you. Shopping for that special person in your life? Visit Edible Arrangements! Need new tennis shoes fitted or some sports apparel to add to your workout outfit? Fleet Street Sports is here for you. It's hard to pass Trace Station up with so many options to choose from.

NORTHPARK:

Looking for an indoor shopping facility to escape the Mississippi heat? Check out Northpark off of County Line Road in Ridgeland. Offering over 130 different shops within a massive two-story building, Northpark Mall is sure to meet your shopping needs. Northpark not only has the classic department stores, such as Dillard's, Belk, and JC Penney, but also offers a wide selection of smaller chains like Journey's and Buckle. Children will be delighted with Build-A-Bear Workshop and Dippin Dots. The shopping center is currently undergoing a massive renovation and revamping, with the addition of new stores and restaurants.





LIGHTHOUSE
OUTDOOR LIGHTING
AND AUDIO



A WARM EMBRACE OF LIGHT
TO WELCOME YOU HOME



STREAM THEATER QUALITY SOUND
OUTSIDE WITH YOU

We design and install outdoor lighting and outdoor audio systems tailored around your home, landscape, and outdoor entertainment areas. We service, repair, and rebuild existing systems. We use the latest technology in our services such as Wifi lighting controls, LED lighting with color changing capabilities, and music streaming from any device. We offer no cost, no pressure consultations and can even demonstrate what the end product would look or sound like at your home.



LIGHTHOUSE
OUTDOOR LIGHTING
AND AUDIO
JACKSON, MS

OutdoorLightingMS.com
601.720.5958

 LighthouseOutdoorLightingofMS

CHURCHES

APOSTOLIC

VIRGIN MARY APOSTOLIC

614 Virgin Mary Rd., | Canton | (601) 859-9110

BAPTIST

BROADMOOR BAPTIST

1531 Highland Colony Pkwy. | Madison | (601) 898-2345

CALVARY BAPTIST

441 Washington St. | Canton | (601) 859-7431

CENTER TERRACE BAPTIST

605 East Peace St. | Canton | (601) 859-4186

CHURCH OF THE HIGHLANDS

670 Highland Colony Parkway | Ridgeland | (601) 499-6000

COLONIAL HEIGHTS BAPTIST

444 Northpark Dr. | Ridgeland | (601) 956-5000

DAMASCUS BAPTIST

3964 Hwy. 22 | Flora | (601) 879-3422

FAIRVIEW MISSIONARY BAPTIST

1278 N. Old Canton Rd. | Madison | (601) 605-2090

FARMHAVEN BAPTIST

420 Pat Luckett | Canton | (601) 859-7238

FIRST BAPTIST

431 N. State St. | Jackson | (601) 949-1900

FIRST BAPTIST

3316 S. Liberty St. | Canton | (601) 859-3172

FIRST BAPTIST OF FLORA

102 Jackson St. | Flora | (601) 879-8022

FIRST BAPTIST OF MADISON

2100 Main St. | Madison | (601) 856-6177

FIRST BAPTIST OF RIDGELAND

302 West Jackson St. | Ridgeland | (601) 856-8724

FIRST STOKES CHAPEL BAPTIST

459 Third Ave. | Canton | (601) 859-7911

FRANKLIN BAPTIST

Hwy. 22 W. | Flora | (601) 879-3415

GOOD HOPE MISSIONARY BAPTIST

1828 Cox Ferry Rd. | Flora | (601) 879-3913

GREATER SAINT MATTHEW MISSIONARY BAPTIST

3796 N. Liberty St | Canton | (601) 855-0240

HARVEY CHAPEL MISSIONARY BAPTIST

242 Ragsdale Rd. | Canton | (601) 859-8811

HIGHLAND COLONY BAPTIST

1200 Highland Colony Parkway | Ridgeland | (601) 856-4031

LIBERTY BAPTIST

815 W. Fulton St. | Canton | (601) 859-6407

LIVINGSTON MISSIONARY BAPTIST

141 Livingston Church Rd. | Flora | (601) 879-3400

MOUNT ABLE BAPTIST

Hwy. 43 S. | Canton | (601) 859-3511

MOUNT LEVI BAPTIST

1008 W. Fulton St. | Canton | (601) 859-8720

MOUNT ZION BAPTIST

514 W. North St. | Canton | (601) 859-2453

MOUNT ZION COBBVILLE BAPTIST

4206 Hwy. 51 | Canton | (601) 859-5692

MT. CENTER MISSIONARY BAPTIST

468 Robinson Springs Rd. | Flora | (601) 879-3117

MT. HOPE MISSIONARY BAPTIST

201 Patrick Rd. | Canton | (601) 855-0052

MT. LEVI BAPTIST

Hwy. 22 | Canton | (601) 859-8720

NEW BETHEL BAPTIST

101 James Ave. | Canton | (601) 859-2829

NEW BIRTH FELLOWSHIP

837 Old Agency Rd. | Ridgeland | (601) 856.5279



NEW LIFE BAPTIST

385 N. Old Canton Rd. | Madison | (601) 856-8722

NEW TRUELIGHT BAPTIST

363 John Day Rd. | Canton | (601) 859-5237

OLD RICE ROAD BAPTIST

82 Old Rice Rd. | Madison | (601) 853-7500

OLD TRUELIGHT MISSIONARY BAPTIST

128 Summerlin Rd. | Canton | (601) 859-3555

PILGRIM REST BAPTIST

239 Crawford St. | Madison | (601) 856-2609

PILGRIM REST MISSIONARY BAPTIST

852 Madison Ave. #A | Madison | (601) 856-2609

PINE GROVE MISSIONARY BAPTIST

249 Pine Grove Rd. | Canton | (601) 855-2060

PINELAKE MADISON/RIDGELAND CAMPUS

223 Old Jackson Rd. | Madison | (601) 829-4500

PLEASANT GIFT MISSIONARY BAPTIST

2055 Pleasant Gift Rd. | Canton | (601) 859-3004

PRIESTLEY CHAPEL MISSIONARY BAPTIST

177 Virilia Rd. | Canton | (601) 859-8449

RIDGECREST BAPTIST

7469 Old Canton Rd. | Madison | (601) 853-1090

RIDLEY HILL MISSIONARY BAPTIST

1034 N. Livingston Rd | Madison | (601) 853-1068

RISING CHAPEL BAPTIST

127 Rising Chapel Rd. | Canton | (601) 859-4393

ROCKY HILL BAPTIST

390 County Barn Rd. | Madison | (601) 856-0759

SHADY GROVE BAPTIST

168 Shady Grove Rd. | Flora | (601) 879-3380

SIMMONS MEMORIAL BAPTIST

118 Memorial Rd. | Flora | (601) 879-8105

ST. JAMES MISSIONARY BAPTIST

814 Old Yazoo City Rd. | Canton | (601) 859-3001

TRACE RIDGE BAPTIST

238 Lake Harbour Dr. | Ridgeland | (601) 898-2003

TWIN LAKES BAPTIST

673 Lake Cavalier Rd. | Madison | (601) 856-2305

VICTORY BAPTIST

420 Hoy Rd. | Madison | (601) 856-4260

FIRST BAPTIST CHURCH JACKSON

Madison Campus | (601) 427-0163

BIBLE

FELLOWSHIP BIBLE

2270 Hwy. 51 | Madison | (601) 855-0660

CATHOLIC

SACRED HEART CATHOLIC

238 E. Center St. | Canton | (601) 859-3749

SACRED HEART CATHOLIC CHURCH

1494 Hwy. 17 | Camden | (662) 468-2354

ST. FRANCIS OF ASSISI

4000 W. Tidewater Ln. | Madison | (601) 856-5556

ST. JOSEPH CATHOLIC

127 Church Rd. | Madison | (601) 856-2054

HOLY CHILD JESUS

315 Garrett St. | Canton | (601) 859-2957

CHRISTIAN SCIENCE

FIRST CHURCH OF CHRIST, SCIENTIST

731 S. Pear Orchard Rd., Suite 9 | Ridgeland | (601) 952-0307

CHURCH OF CHRIST

CHURCH OF CHRIST

3479 N. Liberty St. | Canton | (601) 859-2865

NORTH FLORA CHURCH OF CHRIST

Hwy. 49 N. | Flora | (601) 879- 3509

NORTH LIBERTY CHURCH OF CHRIST

523 N. Liberty St. | Canton | (601) 859-2865

SOUTH MADISON CHURCH OF CHRIST

338 Lake Harbour Dr. | Madison | (601) 856-2165

CHURCH OF JESUS CHRIST

**CHURCH OF JESUS CHRIST OF
LATTER DAY SAINTS**

243 Hoy Rd. | Madison | (601) 898-7751

CHURCH OF GOD

FIRST CHURCH OF GOD

741 Hwy. 51 | Madison | (601) 856-0652

HOLY CITY CHURCH OF GOD IN CHRIST

251 Kearney Park Rd. | Flora | (601) 879-3999

EPISCOPAL

CHAPEL OF THE CROSS

674 Mannsdale Rd. | Madison | (601) 856-2593

GRACE EPISCOPAL

161 E. Peace St. | Canton | (601) 859-2680

ST. COLUMB'S EPISCOPAL

550 Sunnysbrook Rd. | Ridgeland | (601) 853-0205

JEHOVAH'S WITNESSES

KINGDOM HALL OF JEHOVAH WITNESSES

2780 S. Liberty St. | Canton | (601) 859-8613

METHODIST

CANTON UNITED METHODIST

3808 N. Liberty St. | Canton | (601) 859-6009

CHINA GROVE A.M.E.

1060 Mannsdale Rd. | Madison | (601) 856-7348

**FIRST INDEPENDENT METHODIST
OF MADISON**

1556 Hwy 51 N. | Madison | (601) 672-1240

FIRST UNITED METHODIST

3301 S. Liberty St. | Canton | (601) 859-4621

FIRST UNITED METHODIST OF RIDGELAND

234 W. Jackson St. | Ridgeland | (601) 856-6456

FLORA METHODIST

142 Carter St. | Flora | (601) 879-8642

LEE'S CHAPEL A.M.E. ZION

Hwy. 16 East | Canton | (601) 859-6005

MADISON UNITED METHODIST

2050 Main St. | Madison | (601) 856-6058

MIDDLETON A.M.E. ZION

602 Way Rd. | Canton | (601) 859-6551

PARKWAY HILLS UNITED METHODIST

1468 Highland Colony Pkwy. | Madison | (601) 856-2733

SHARON A.M.E. ZION

Sharon Rd. | Canton | (601) 859-6077

ST. MATTHEW'S UNITED METHODIST

7427 Old Canton Rd. | Madison | (601) 856-9581

ST. PAUL CHAPEL A.M.E.

495 Main St. | Madison | (601) 898-9610

ST. PAUL A.M.E. ZION

505 S. Union St. | Canton | (601) 859-1904

PENTECOSTAL

APOSTOLIC LIGHTHOUSE

1529 Hwy. 43 S. | Canton | (601) 859-7363

APOSTOLIC REVIVAL CENTER

301 W. Washington St. | (601) 856-2385

PARKWAY PENTECOSTAL

601 Reunion Pkwy. | Madison | (601) 853-2607

PRESBYTERIAN

FIRST PRESBYTERIAN

202 E. Peace St. | Canton | (601) 859-4738

FIRST PRESBYTERIAN

1390 N. State St. | Jackson | (601) 353-8316

FIRST PRESBYTERIAN

7717 Old Canton Rd. | Madison | (601) 856-6625

GRACE CHAPEL PRESBYTERIAN

New Mannsdale Rd. | Madison | (601) 856-7223

HIGHLANDS PRESBYTERIAN

1160 Highland Colony Pkwy. | Madison | (601) 853-0636

MADISON HEIGHTS PCA

405 Bozeman Rd. | Madison | (601) 605-9929

PEAR ORCHARD PRESBYTERIAN

750 S. Pear Orchard Rd. | Ridgeland | (601) 956-3283

OTHER

THE CHURCH TRIUMPHANT

731 S. Pear Orchard Road Suite 43 Ridgeland | (601) 977-0007

GREATER FAITH CALVARY

551 Owens St. | Canton | (601) 859-4997

GREATER SIMS CHAPEL AMEZ

305 N. Railroad St. | Canton | (601) 859-6327

HOLY TRINITY ANGLICAN CHURCH

432 Bozeman Rd. | Madison | (601) 898-5035

KEYPOINTE CHURCH INT'L

614 Magnolia St. | Madison, MS | (601) 605-2880

LIFE WAY CENTER

271 W. Center St. | Canton | (601) 859-2770

ST. PETER'S ORTHODOX

180 Saint Augustine Dr. | Madison | (601) 856-3894

UNITED BELIEVERS CENTER

819 George Washington Ave. | Canton | (601) 859-7180

NEW BEGINNINGS INC.

211A Industrial Drive | Ridgeland | (601) 898-2727

GETTING SETTLED

ELECTRICITY

Call Entergy, located at 1165 Highway 51 North in Madison. (800) 368-3749. Residential deposits may vary but the base rate is \$200 and the connection fee is \$45.

NATURAL GAS

Atmos Energy can be reached by calling (888) 286-6700. Centerpoint Energy can also help other customers. Located at 120 Beaver Creek Dr. in Ridgeland, the phone number is (800) 371-5471. Residential deposits are based on a credit check; however, deposits start at \$75.

WATER AND SEWER

Each municipality handles its own water and sewer customers. Newcomers to Madison will need to call the Water Department at (601) 856-8958 for info on hook-ups and billing. New services at Madison Water Department include: \$100 for owners and \$300 for renters.

Ridgeland residents may call (601) 856-3938 for information on water and sewer services. Connection cost is either \$50 or \$75, depending on the size of the meter.

Flora residents will need to go to City Hall, located at 168 Carter Street to get their water activated. A \$100 deposit for renters and a \$40 deposit for owners will be required before service. Same-day connection will be provided, with few exceptions.

Most Canton utilities are handled through Canton Municipal Utilities. CMU offices are located at 127 West Peace Street. They provide water, gas and power service. Renters must pay a \$300 deposit. Owners must pay \$200 deposit. Call (601) 859-2921 for more information.

TRASH/RECYCLING

Waste Management, which can be reached by calling (601) 922-9647, provides twice weekly service to residents of Ridgeland and Madison. The daily schedule varies by location and the fee is assessed on your water/utility bill.

CAR TAGS

Automobile licenses must be purchased annually and are due during the month in which the vehicle was purchased. For new residents, Mississippi law requires that automobiles be registered within 30 days of moving into the state. Vehicles purchased new or used from a dealer or individual must register within seven days. If you moved from another county within Mississippi, the county Tax Collector's Office says you do not need to get a Madison County tag until your current tag expires. Three locations are available for your convenience:

- Madison:
171 Cobblestone Drive
(601) 856-4472
- Canton:
146 West Center Street
(601) 859-5226
- Flora:
168 Carter Street
(601) 879-9537

DRIVER'S LICENSE

New residents of Mississippi must apply for a driver's license within 60 days. If the applicant has a valid out-of-state license, only a rules, signs and eye test is required. If the applicant's out-of-state license has express, a road test may be required. A Social Security Card must be shown. Minors making an application must be at least 16 years of age and present a Social Security Card and birth certificate for proof of age.

HOMESTEAD EXEMPTION

If you are buying your home in Madison County and occupy it as your primary residence, you may be eligible for Homestead Exemption. Applications are made at the Madison County Tax Assessor's Office. For more information, contact Tax Assessor Norman Cannady. Offices are located on Highway 51 in Ridgeland and at the Madison County Complex in Canton.

POST OFFICE

Home delivery of mail and post office boxes are available in each local community. The find the post office closest to your home:

- Ridgeland:
611 South Pear Orchard Road
- Madison:
990 Highway 51
- Flora:
4853 Main Street
- Canton:
150 S. Union Street

NEWSPAPERS

The Madison County Journal is the county's only independently owned and operated weekly newspaper. The Journal runs every Thursday. Once a month as a subscriber you also receive the Madison County Magazine a lifestyle supplement to the newspaper. Call 601-853-4222 to subscribe.

VOTER REGISTRATION

Potential voters must be registered at least 30 days before any election to be eligible to vote. To register for city, county, state and federal elections, contact Circuit Clerk Anita Wray (601) 859-4365.



Named
SAFEST
CITY
by Safewise



MOST
SUCCESSFUL
CITY *by Zippia*

Madison
the city



www.MadisontheCity.com



A Solution for EVERY Window

- Sun Control Film - Reduce heat, glare, and fading
- Security Film - Delay intruders
- Decorative Film - Enhance the look of your space!



(601) 340-6078



Authorized Dealer
Prestige Authorized Dealer

www.MGTFilms.com