

**RAFFLE!
FLEA MARKET!**

49th Annual

**FOOD
STANDS!**

Rice County Steam & Gas Engines Inc.

TRACTOR SHOW

AUGUST 30, 31 • SEPTEMBER 1, 2024

11988 Faribault Blvd • Dundas, MN 55019 • 3 miles South of Northfield, MN on MN Hwy. 3



All Makes & Models of Tractors & Equipment Welcome

**ADMISSION
\$10.00 Adults
FREE 12 & Under
Good for all 3 days!**

**INFORMATION ON OUR WEBSITE
AND FACEBOOK:
ricecountysteamandgas.com**

GENERAL INFORMATION CONTACTS:
Bill Becker 507-581-1225 • Jeremy Sevcik 507-403-1614
Carmen Sevcik 507-649-0352



Postal Customer
ECRWSS

PRSR STD
U.S. POSTAGE PAID
PERMIT #2
Dennison, MN 55018

Welcome to The 49th Annual RCSG Tractor Show 2024

Preserving a Bit of Yesterday for Tomorrow. That is our goal. This year, featuring Minneapolis Moline.

We are excited to print this souvenir edition paper showing you more about the history of the club, our location and attractions here at RCSG. We thank our past and current sponsors for their generous support of the club over the years, many of which you see mentioned on these pages. Please support them whenever possible. We Thank our Club members and volunteers who make it all

possible, not only at show time, but throughout the year. The club has been busy with the addition of The Waterford School Building to the grounds, as well as other projects around the showgrounds, all in an effort to make your visit here as enjoyable as possible!

Whether you are a visitor, sponsor, vendor, volunteer or member, We Thank you for your friendship and support of The Rice County Steam & Gas Show, and look forward to seeing you in 2025 as we celebrate 50 years!

Rice County
Steam & Gas Engines, INC.
www.ricecountysteamandgas.com

Rice County Steam & Gas Engines Inc. - A Short History of the Club

This information was found in the RCSGE archives, no author given.

In 1974 Clarence Purdie bought two 50 hp Case steam engines. S.F. (Smokey) Cross helped him restore them. After doing so, they decided to have a free Threshing Show/Exhibit. This took place at the corner of Highway 60 and Western Avenue in Faribault, MN. Approximately a half a load of oat bundles were threshed and there were about 30 people in attendance.

In 1975, C.E. Purdie, S.F. Cross, Fred Berndt and Joe Cross decided they would start a club and so was born what would later be known as the Rice County Steam & Gas Engines Inc. Club. Later that summer, a few more people joined the club and it was decided to hold a show and exhibit on the Loren Dahle farm in Warsaw, MN. By this time, Fred Berndt was elected to be the first President of the Club.

In 1976 the club held two shows. One was north of Faribault on Highway 3 and the second one was at the Rice County Fairgrounds in Faribault, MN. Smokey Cross at this time was President.

In 1978 the club made a move to the Malecha Brothers farm at Little Chicago, MN. Most of the interest still remained in the threshing activity, large and small. For some, the steel wheel tractors and some of the equipment seemed popular.

In the early 1980's other antique farm interests seemed to grow, as well as the membership. A sawmill and building were added, along with other items and exhibits. Membership hovered at the 50

member mark during this time.

The mid 1990's the club undertook the project of a raffle tractor to be raffled off at their annual Threshing Show. The first of which was a 1952 Ford 9N. Palmer Fossom was instrumental in finding just the right tractor and several members helped restore it to excellence. Larry Holt put a beautiful new coat of paint on her and the club was on its way. Members now are trailering a raffle tractor when they go to week-end shows around the state. Other members are spending an hour or so selling tickets at these shows as well as seeing the sights of other Clubs activities. More people are showing an interest in the antique tractors and machinery, and more individuals are collecting and restoring their pieces.

Again the membership numbers increase and the tractor displays have grown along with the quality of the show pieces, making for bigger and better fall shows.

In the fall of 1998, the organization purchased 50 acres on Highway 3 south of Northfield, near Dundas, MN. The meandering club has finally purchased a permanent home. Strangely enough, it is only a few miles north of one of those early show sites held in 1976.

The 1999 season we were celebrating our 25th Anniversary. Our membership had nearly doubled in the past two years bringing a widely diversified base of occupations, experience and backgrounds. We still needed to get the utilities hooked up and the finishing touches on the

building before we could use it as intended, but it was a good start. A planning committee spend many a night in meetings charting and making plans for the set up of a pioneer type village on our showgrounds. Another raffle tractor was raffled off at our fall threshing show. This time a JD Garden Tractor, brand new with the warranty, and this time the lucky winner was club members, Don and Joann Weed of Northfield. With all the new demands, the club decided it best to resurrect the Board of directors system of the past. A new board was elected and immediately started the task of revising the by-laws to fit the growing club. We completed the paperwork of and received the 501-C3 government classified for a non-profit club with the help of a member's brother-in-law, Wesley Bahl. State sales tax exemption soon followed.

In the year 2000 the club held it's first annual Flea Market/Swap Meet on Memorial Day weekend. It was soggy weekend but not a total washout and we look forward to bigger and better events in the future. The club also initiated fundraising meals both in Northfield and Faribault with a good deal of success. The raffle tractor for 2000 was an Allis Chalmers C tractor. Several members worked on obtaining the tractor but the

main restorer by far was Sam Sperry of Webster township. The 2000 show had beautiful weather and a wonderful turnout. We introduced several new features that we hope to continue, such as the model airplane club exhibit. Another new feature for 2000 was the selection of a Miss Steamer to represent the our club at parades and other events. The first Queen was Heidi Barta, daughter of Club members Tracy and Luann Barta. Also the Princess was Heather Duban, daughter of club members Wally and Linda. Both girls did a wonderful job of attending festivals and events of other towns and representing the club in many ways, and so with the present season we are celebrating yet another year and anniversary together. The officers and board have acquired enough experience now that they are doing an even better job and are stepping out in leading the club in new and brighter directions. Growing so fast brings its problems, but with the mutual interests expressed and shown, we expect an even brighter and grander future. Welcome to our organization!

Note: I do not know who wrote this timeline, but next year is our 50th anniversary and I will try my best to update this timeline to current year.

A lot has happened since 2000.

**MEMBERS AND GOOD SUPPORTERS
OF
RICE COUNTY STEAM & GAS**



Borris & Joyce Mokoff

Rice County
Steam & Gas Engines, INC.

Rice County Steam & Gas Showgrounds - 11988 Faribault Blvd, Dundas

GENERAL INFORMATION CONTACTS:
Bill Becker 507-581-1225 • Jeremy Sevcik 507-403-1614
Carmen Sevcik 507-649-0352

Special Edition

**RICE COUNTY STEAM & GAS ENGINES INC.
2024 TRACTOR SHOW
PUBLICATION**

Produced and published for the Rice County Steam & Gas Engines Inc. by Mainstreet Publishing
P.O. Box 125 - Dennison, MN 55018
E-mail: hometownmessenger@gmail.com
Telephone: 507-649-3327



A Bit of Yesterday...

By Mary Tulp

The 49th Annual Rice County Steam and Gas Engines Tractor Show is coming up Labor Day Weekend, Friday-Sunday and I would like to give you some information on making Sorghum syrup. Every year Curis Piper and his helpers turn sorghum into syrup, however this year the sorghum plants are not producing, but we are hopeful to find some plants.

Sorghum comes in different types but for our purpose we grow a sweet sorghum which is used to produce syrup.

Sorghum is a grass that grows well in most climates. inexpensive to buy these seeds. Plant as you would corn and harvest the canes when ready to make molasses.

When the plants are ready in the field. A person will use a machete to chop the plants off about 6" above ground and removing the seed pod at the top of the plant, then loaded in a wagon.

The wagon will be brought to where the stalks will be stripped of all the leaves so the stalks can be put through the mill to crush the juice from the cane. The mill is run by a tractor that has been geared to the mill. The visitors/children at the show always like to help with putting the canes through the mill to get the juices. Using the sorghum plant juice, farmers would make syrup or otherwise called sorghum molasses. I have read that the taste of the molasses depends on the soil where it grows. It takes 10-12 gallons of juice to make one gallon of syrup.

We cook our juice over an outdoor wood fire in a large container, keeping it low and warm it slowly. Remember, there is a lot of natural sugar in the cane juice and it can scorch easily. Bring the mixture to a simmer and keep it there for several hours.

The cooking of the juice is where the ancient art and craft of making molasses be-

comes important. If you cook molasses too long, it will taste strong and be thick. If you cook it too short, it will not be done and remains runny.

As the greenish juice simmers, you'll notice a foam starting to form on the top. This needs to be skimmed off, if you don't skim the impurities off, they will cook into the molasses that will have a bitter taste. (I read this foam is nutritious so I keep it and add it to water for your plants.)

That's when it's boiling. At the beginning it could smell greenish, but then it will begin to smell like molasses. It is very time consuming process.

You'll know it's done when it no longer tastes like raw juice and is a thick syrup like dark corn syrup. The end result will be even thicker when it cools. Be sure to bring it all the way to this stage as undercooking it can cause it to spoil and can cause mold to grow.

When you get down to the last bit, you have to start pulling the fire away so you won't scorch it. When it is done, it will run off the spoon like thick corn starch. If it is runny, it's not done. If it is clumpy, it's too done. Don't ever cook it on a rainy day. It won't ever get done because of the humidity."

When the juice is reduced to about 10% (1 gallon from 10 gallons), it's ready to can. Pour into clean jars and seal in a hot water bath, as you would for canning tomatoes. Storing in an airtight container like this will help to prevent crystallization. Then to use, use it as you would any other molasses.

If we are unable to make syrup this year, I hope you will come in 2025 for our 50th year of the Rice County Steam & Gas Engines Tractor Show.

It could be used as a sweetener for foods like baked apples, gingerbread cake, ginger molasses cookies, in coffee, baked beans and barbecue sauces or just on breakfast biscuits.

You can find You Tube videos on making sorghum syrup.

Many recipes for using sorghum syrup on internet.

Read more at: <https://www.salisburypost.com/2017/12/05/making-sorghum-molasses-the-old-fashioned-way/>

Live MUSIC

RICE CO. STEAM AND GAS ENGINES, INC.

TRACTOR SHOW

AUGUST 30, 31

SEPTEMBER 1

2024



Friday, August 30 • 2:00-5:00 PM

CZECH CONCERTINA CLUB BAND

<http://concertinaclub.org>



Saturday, August 31 • 1:00-5:00 PM

CHARLIE STICHA BAND

Polka, Waltz, Classic, Country



Sunday, September 1 • 1:00-5:00 PM

DAKOTA RAMBLERS BAND

"The Region's Original Country Band Since 1956"

Dakotaramblersband.com



Rice County
Steam & Gas Engines, INC.
www.ricecountysteamandgas.com

LET US HELP YOU PLAN YOUR EVENT!



- Tours
- Wedding Guest Shuttle
- Venue-hopping with Friends
- Class Reunions
- Birthday Parties
- Progressive Dinners
- Mobile Meetings
- Group Airport Transportation
- Create-your-own event!

Group transportation offered anywhere within 100 air-miles of Northfield, MN.

2-Hour Minimum for Events, 4-Hour Minimum for Weddings

Contact us for pricing: 507-330-6937 or info@allaroundtownie.com • allaroundtownie.com



"Steam is here to Stay Rice County Steam Show"

March 1977 Steam Traction

By Mrs Skip Voge

Steam cylinder oil was in the air and many people remembered days gone by of hard work and lot of sweat; but many more people remembered days gone by of love of the land and a togetherness that is not found in our age of mechanization. Farmers banded together against the elements are what steam days were all about. Once again steam was in its' glory on September 6, 1976, on a farm outside of Warsaw, Minnesota. On that beautiful fall day, thousands of people gathered to view the Minneapolis engine owned and operated by Fred Berndt of Morristown, and the 50 hp Case engine of C.E. Purdie of Faribault, easily ran the separators of by-gone days, threshing over 20 acres despite the dry season in Minnesota, once the oats yielded over 60 bushels per acre.

Visitors were treated to a day of nostalgia in buggy rides given by Chuck Thurber and Bud and Jim Cate. As llamas delighted both the young and young at heart compliments of the State Bank of Faribault and Mr. Smith of St. Peter, Minnesota.

Old tractors were on display as were old farm implements. Dennis Waskosky and his son Mark, collectors and restorers of gas engines, displayed a large assortment of models and demonstrated corn shelling with an antique sheller. The Waskosky girls also got in the act with their demonstration of rope making.

Warren Shevlin displayed his 1908, 12 hp International tractor, and Ron Salaba, Roman Kalina, Butch and Larry Malecha also had a large display of gas engines. Joe Cross, an avid steam and gas engine lover displayed several gas engines.

A large static display of farm equipment of days gone by was displayed by Rueben and Loren Dahle, on why the event was staged.

Smokey Cross and his son, Terry demonstrated and gave rides on their self-propelled 5 hp vertical boiler engine of their own design. The engine and boiler were salvaged from a creamery and mounted on 1954 axles. When Smokey first acquired the boiler, it was a plumber's nightmare. Now, it is a fantastic piece of beauty in its own right. They were assisted in the operation of the steam car by Todd Voge, 9 year old grandson of Smokey, who set many old timers back on their heels with his knowledge of the operation of the steam engine. Steam runs in the Cross family.

Elsner Machacek, Northfield exhibited his 1/3 scale model of a 65 hp Case tractor which had won many ribbons at the county fairs. It has been on display at numerous exhibits in the area and was always a favorite as it chugs along under power.

Tom Voge displayed his 1/30 scale model of the 65 hp Case engine that took him over two years to complete and was

also self-propelled. All of the parts were machined by hand and is now a valuable collector's item

Art Voge ran the makeshift blacksmith shop and was kept busy making horse-shoes for the spectators. They're nice remembrances of that special day in the lives of many people. Terry Voge, Smokey's 6 year old grandson had the job of keeping the forge hot.

Lunch was in the hands of the North Morristown Lutheran Church and a traditional thesherman's dinner was served in a big tent.

It seems amazing how these men, women and even children can take a period of history and turn it into an event of today. How can they see through the rust and dirt to rebuild a piece of American history machinery into like the original equipment? Steam and Gas Engines has not been forgotten in the hearts and minds of many people in the Faribault area, it the 2nd Annual Steam Days were any indication. It is an art of history that has etched in the lives of everyone concerned and contrary to what people think, STEAM IS HERE TO STAY !!!

Looking Back at 2023 Tractor Show



**Proud to Support
the
Rice Co. Steam
& Gas Engines Inc.
49th Annual
Tractor Show**

NEIGHBORLY CARE YOU DESERVE

CHECKING • SAVINGS • CDs & IRAs • HEALTH SAVINGS
OVERDRAFT PROTECTION • ONLINE BANKING
MOBILE BANKING & DEPOSIT • BILL PAY
DIGITAL WALLET/CONTACTLESS PAYMENT • CONSUMER LOANS
HOME EQUITY LINE OF CREDIT • CONSTRUCTION LOANS • MORTGAGE LOANS

Real people. Real results.

FRANSEN BANK & TRUST

FrandsenBank.com

Dundas | 507.645.8825 | Member FDIC

AMERICA'S BICENTENNIAL

The Rice County Steam Association will present its first threshing bee. Equipment will be used from "The Good Old Days" when neighbors needed each other and worked together.

Whistles start blowing at **10:00 A.M., SEPT. 7.**

Noon luncheon and refreshments will be served by the North Morristown Lutheran Church.

STEAM ENGINES One black monster weighing 17 tons. Another engine of 9 tons completely restored to factory condition.

MACHINES Two threshing machines will be on hand.

THE THING Assembled from parts gathered hither and yon. Weighs 3200 lbs. It burns wood, rags or potato peelings, drinks hard or soft water, toots, puffs, and moves under its own power.

GAS ENGINES There will be dozens of stationary gas engines brought back to life. You will hear them popping and wheezing.

BUGGY RIDES Children 93 years old or younger could be lucky and get a free ride in Chuck Thurber's buckboard and team.

Bill Holmblad, junior member of the association, will exhibit and operate several miniature steam engines and tell you why steam power is so wonderful.

Here is an opportunity to spend a day outdoors, to renew old acquaintances and memories and form new friendships.

Action takes place on the Reuben Dahle farm, 1/2 miles West of Warsaw on County Road 71. Follow signs from Warsaw. Enter field at the U.S. flag pole.

Children, free. Adults may buy a \$1.00 steam button to help defray expenses.

1975 First Show Flyer

Plowing with Steam Engines



Rice County

Steam & Gas Engines, INC.

**2024 RAFFLE
TRACTOR TICKETS
AVAILABLE ON SITE!**

1st Prize - Minneapolis Moline Tractor or \$2,000 Cash

2nd Prize - Minneapolis Moline Pedal Tractor • 3rd Prize - 1/16 Scale Minneapolis Moline Tractor

**Congratulations
to Our
2023 Raffle
Winners!**



2023 First Place
Sean Somar, Apple Valley, MN
(Bought tickets @ RCSGE show)



2023 Second Place
Brandon Bourke, Oake Grove, MN
(Bought tickets @ Nowthen show)



2023 Third Place
Dick Kiersow, Woodville, WI
(Bought tickets @ Almelund show)

Threshing



Thank you
Thank you for supporting the
2024 Rice County
Steam & Gas
Engines Inc.
Tractor Show!

A Bit of Yesterday...

By Mary Tulp

I thought because we were featuring Minneapolis Moline for our fall show, I wanted to know more information about the tractor history. I began researching information on the history of the company and this is what I would like to share with you. I hope you will find it as interesting as I have.

In 1929 Minneapolis Moline was formed by a complex merger of three companies; Minneapolis Steel and Machinery, Minneapolis Threshing Machine Co and the Moline Plow Company to become Minneapolis Moline Power Implement.

To give you a breakdown of each of these companies and what they would bring to the merger, I will start with Moline Plow Co which began as a partnership between W.

Candee and Robert K. Swan in 1852. The company built fanning mills, by 1865 they began producing plows. They added two more partners, Andrew Friberg and Stillman W. Wheelock which gave the company capital and momentum.

The company produced a broad range of implements and equipment. In 1884 they introduced the Moline's Flying Dutchman sulky plow and in 1886 the successful Moline Champion corn planter. By 1915 they bought the rights to Universal Tractor Company's motor cultivator and redesigned the unit and started production by 1919 and discontinued production in 1923.

Minneapolis Steel and Machinery Co

was founded by J.L. Record and Otis Briggs on April 24, 1902 to manufacture steel components for buildings, bridges, and other steel structures. In 1910 they developed the first of an impressive line of durable heavyweight gas tractors known as Twin City. They produced the Twin City Twentieth Century tractor for the Canadian markets, but by 1914 they ended their contracts to concentrate on military munitions. They did continue on developments for a smaller tractor program.

The new line of lightweight "Twin City" tractors were very well engineered, and as a testament to their quality they later served as the basis for the entire Minneapolis-Moline tractor line. 1926 brought an end to the heavyweight line of production. The company survived the Depression, but the success they had with smaller tractors still left the company without a line of tillage implements. Other manufacturers had lines of tillage tools and tractors, the competition was fierce among the leading manufacturers.

In 1927 experimental combination harvester threshers were built for demonstration purposes.

On March 30, 1929, the company merged to survive and become a full line supplier, blending inventory and tooling. After the merger, Minneapolis Moline combines that were produced looked very different and had an outsourced flathead engine on them. Just before the



merger, the last two tractor models released were the KT and MT. These models were built for several years carrying the "MM-Twin City" designation, the color scheme changed in the late 1930's from grey to yellow and the Twin City name was eliminated.

Our third company to form the merger was Minneapolis Threshing Machine Company which was founded in Hopkins, Minnesota, by John S. McDonald. The new company only manufactured threshing machines, but later it expanded into the manufacture of steam traction engines.

After only a few years on the market, steam engines and threshing machines had established a highly regarded name for themselves among farmers in the grain-growing regions of the United States and Canada.

By 1911, the farmers were losing interest in the steam engine tractor, so the company decided to enter the expanding tractor business. Walter I. McVicker was hired to design a tractor which became the successful Minneapolis "35-70."

In the late teens, they expanded into the small tractor market with their newly designed "15-30" tractor. Other models were later added to fill out the tractor line, replacing the older models. These newly designed tractors all featured the large bore, long stroke engine design that was to become a trademark of all Minneapolis-Moline tractors built after the merger in 1929.

The merger made Minneapolis Moline one of the largest agricultural machinery companies in the country. It offered a full

line of tractors, engines and farm implements.

Below is a condensed timeline of the Minneapolis Moline Company.

1937: Standard "U" and Standard "R" tractors are released, as part of its "Visionline" design that enabled farmers to see both sides of the tractor's operation at once.

1938: "U de Luxe" (UDLX) Comfort tractor

1941-1945: Minneapolis Moline continues to produce tractors and farm implements, but the factory also participates in the manufacture of shells, warheads and army tractors. It receives multiple awards from the military lauding its war-time spirit.

1942: The first "Jeep" is produced. The word "Jeep" was first used when referring to any new vehicle arrived for testing in the military. As M-M begins manufacturing tractors designed for the military, the term becomes more specific.

1946: War Ends
1950s: Minneapolis Moline releases one of the last "great lines" of tractors, the 5-Star Powerline Series.

1951: M-M merges with B.F. Avery, a farm implement manufacturing company and receives \$25 million defense contract from the U.S. government.

1963: Minneapolis Moline is purchased by the White Motor Company. After 10 years of decline Minneapolis Moline is folded into the Tractor Division of White Motor Corp.

The last Moline tractor off the factory line happened on June 6, 1972.



Minneapolis Moline, Lake Street and Minnehaha Avenue, Minneapolis, Minnesota Built 1902, Razed 1973

**Individual Treatment Plans
Specialized to the
Unique Needs of Each Patient**

~ Dr. Grant L. Modory ~

Services:

- **Chiropractic**
- **Auto Accident &
Worker Compensation**
- **Drug & Employment Screening**

COMPLETE CHIROPRACTIC

Call today to setup an appointment
507-645-0333
completechiropractic.us
303 Hester Street West, Dundas

Blair Quinnell Project Manager

Direct: 612.986.0219
Office: 952.222.4004
Fax: 952.222.3977

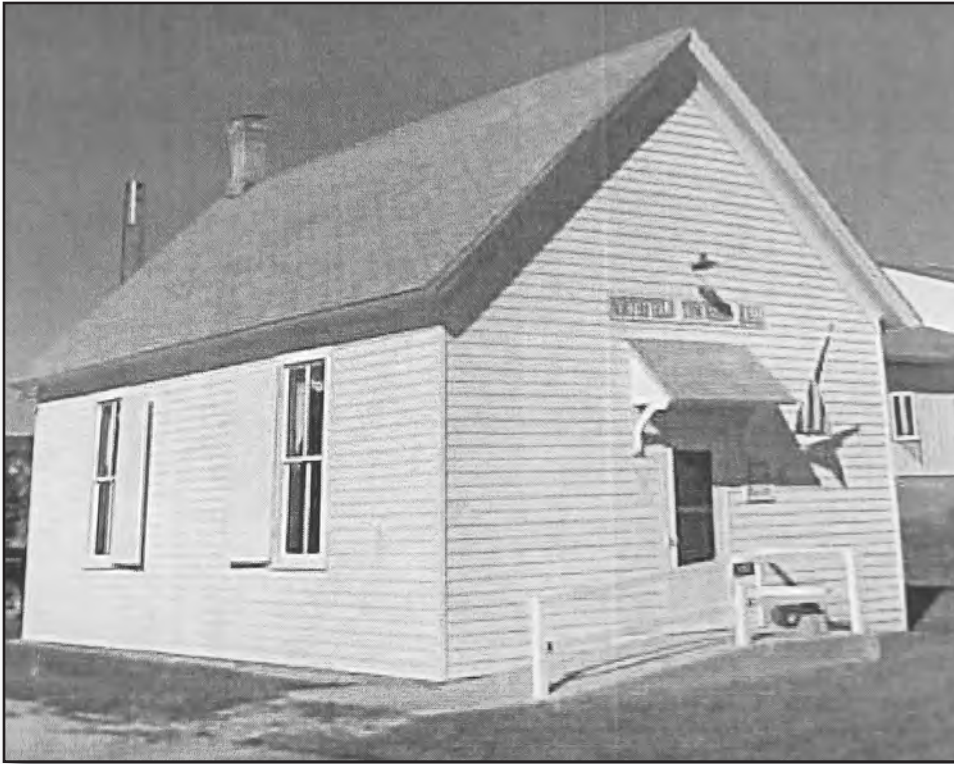
blair.q@capitalmn.com

BC645094

501 West Travelers Trail • Burnsville, MN 55337
www.capitalmn.com

ZIGGY'S
LIVE BAIT & TACKLE
109 Water Street North
Northfield
507-663-0228
OPEN 7 DAYS A WEEK
5:30am-10:00pm

History of the Northfield Townhall Hall



On April 25, 1884, the Board of Supervisors of Northfield Township met at the office of the clerk to consider bids for the building of a town hall. Until this time, meetings of the township residents had been held at the farm of D.H. Orr, where a building was rented for \$5. Only one bid was submitted. This was from Charles Merrill for \$620, and the bid was not accepted.

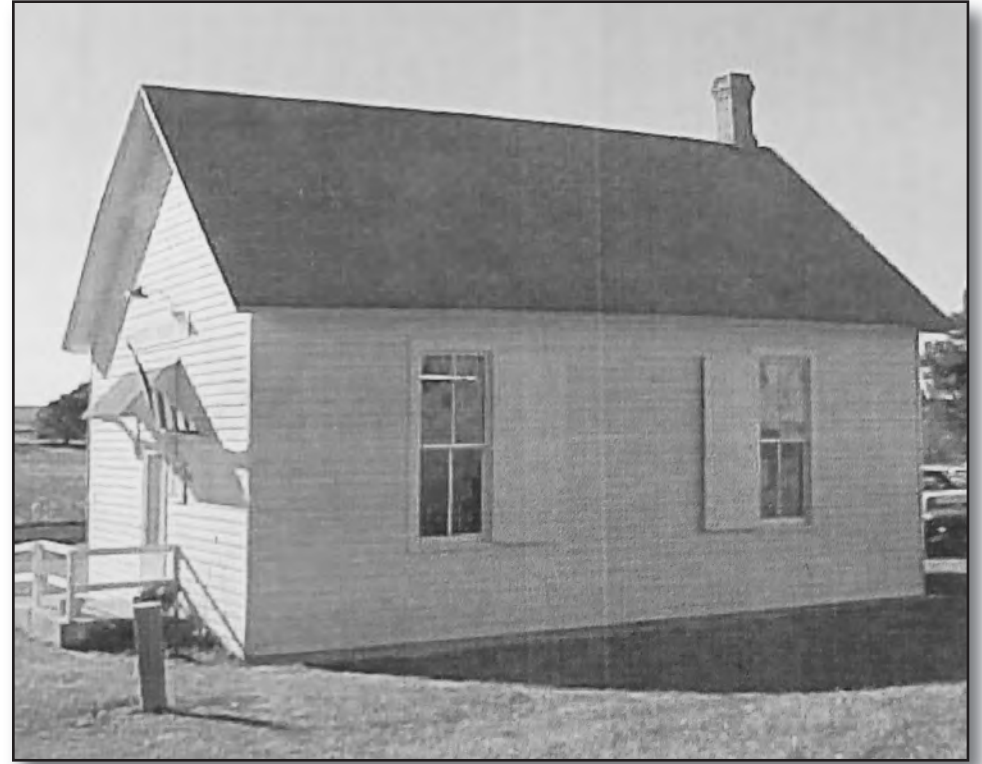
The supervisors met again on June 23, 1884, at at this time, J.E. Cook was paid \$5 for the preparation of plans for the proposed townhall. Those on the Board in 1884 were William Hildebrandt, A.L. Huseby, and John Miller as Supervisors, E.J. Horr as Treasurer and John Koester as Clerk.

On October 9, 1884, the Supervisors met at the new townhall to inspect the building. The building was accepted and full payment of \$600 was paid to Joseph Tiffany for the construction of the hall building. The insurer of the townhall was the Home Insurance Company at a cost of \$12.50. Theodor Miller was paid \$4.50 for chairs for the hall. Other costs were \$1.25 for a lamp and \$2 for fence

posts.

The first annual meeting held in the new townhall was on Tuesday, March 10, 1885. From that time on the building was used for township meetings, and it was also used by the Big Giants 4-H Club for monthly meetings. Over the years, some modifications were made to the heating, lighting and siding of the building. The townhall was used for over 115 years.

At the annual meeting in March of 2000, it was decided to build a new township hall at this same location of the intersection of 110th Street and Jacobs Avenue. The new hall was build over the summer months of 2000, and it was first used for the Primary Election in September 2000. Members of the Township Board when the new hall was built were:



Willard Estrem, Mike Groth and Brian Peterson as Supervisors, Karen Zimmerman as Treasurer, and Marjorie Randolph as Clerk.

Many township residents express the desire to have the old township hall moved to another site and have it preserved. The hall was donated to the Rice County Steam and Gas Association, and in the fall of 2001 it was moved to their

site along Highway 3, near Dundas. It will be part of the pioneer village they have planned for this location. This historic building will continue to be of use to the community, and it can be visited by those for whom it holds special memories.

This information was taken from the Northfield Township Minute Books.

Kline Welding Inc.
Providing mobile and workshop-based welding service throughout Southern Minnesota.
Specializing in custom fabrication and welding repair.
 14751 Camp Winona Trail
 Lonsdale
507-334-4909

Proud to Support the Rice County Steam & Gas Engines Inc. Tractor Show

Join Your Local Snowmobile Club

WATERFORD WARRIORS
NORTHFIELD, MN

Follow us on Facebook @ Waterford Warriors Snowmobile Club

**Your One-Stop, Locally-Owned
LIQUOR STORE**

We have all of your favorite brands and selections in stock at great prices!

Cold Beer • Craft Brews • Wine • Spirits • Champagne
Hard-to-Find Labels • Gift Sets • Ice



If it's Selection, Value, and Service, then it must be Firehouse

Hwy. 3 South, Dundas
645-5717



Locally Owned Since 1983



Perry Kruse Electric

Install and Repair Lighting Fixtures
Replace Defective Receptacles and Switches
Install Additional Circuits
Other Miscellaneous Electrical Work

405 Juniper Avenue West, Northfield, MN 55057

(507) 645-8046

MN License EA006465 • Bonded & Insured

FAIR PRICING!

NO JOB TOO SMALL!

PROUD TO SUPPORT THE
49th ANNUAL
RICE COUNTY STEAM & GAS ENGINES INC.
TRACTOR SHOW

**Dwight & Ruth
Hildebrandt**

507-334-3766

Member of
Rice County Steam & Gas Engines, Inc.
Dundas, MN 55019

*Preserving a Bit of
Yesterday for Tomorrow*

**G & N
LANDSCAPING**

17766 Cannon City Path
Faribault, MN

507-334-7620

**Lampert
Lumber**

1225 S Hwy 3, Northfield
507-645-9553

www.lampertlumber.com/northfield/

320 NW 8th Avenue, Faribault
507-332-7436

www.lampertlumber.com/faribault/

**Our Circle
of Friends**
Bob & Rebecca Glende

syngenta THE SEEDCARE
SEEDS INSTITUTE™

www.syngenta.com
Stanton, MN

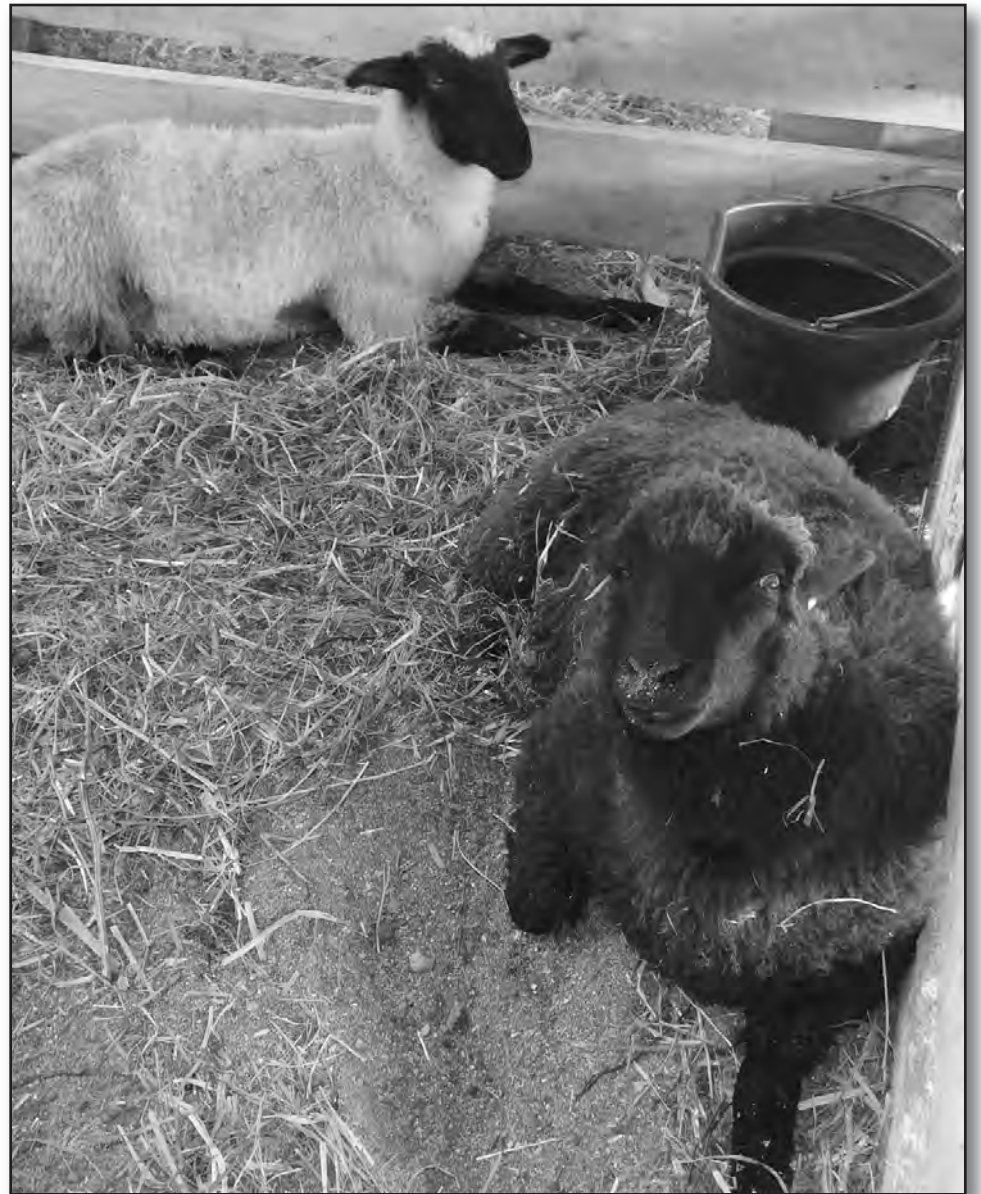
**The
Fireside**
LOUNGE AND
SUPPER CLUB

37540 Goodhue Ave., Dennison, MN
Hours: Wednesday & Thursday 11:00 AM-8:30 PM
Friday & Saturday 11:00 AM-9:30 PM; Sunday 9:00 AM-8:00 PM
Bar Open Later
507-645-9992 • www.firesidelounge.net



Petting Zoo

by Windy Willow Farm Adventures



Rice County 4-H Exchange



The group in front of the Alamo site

We have the Rice County 4-H Exchange who takes care of our flower garden maintenance around several of our buildings. This year they have 13 youth, grades 6-12th. Their 2024 leaders are Rustianna Mechura and Lisa Wilson-Humfield. They are currently traveling in Burlesque, Texas (July 22-28).

The group really enjoy getting together and giving back to our community.



A group having some fun after finishing their work at the Drentlaw House on RCSGE showgrounds last year.

DOUGS AUTO SERVICE



COMPLETE AUTOMOTIVE SERVICE

507-663-1371



1802 Cannon Road, Northfield, MN 55057

Kids Pedal Pull



Looking Back at 2023 Tractor Show



History of the Rice County Northern Railroad

The Rice County Northern Railroad is a wholly owned subsidiary of Rice County Steam and Gas Engines, Inc. A railroad had been planned since the original site plan was made when the club moved to the present Showgrounds site in 2001. The site plan shows a railroad around the entire display area. Over the years various plans were studied to add a railroad to the Showgrounds but nothing was formally approved. In the fall of 2018, the club had an opportunity to acquire an 1/8 scale train and track from a private party in Hackensack, Minnesota. After making a site visit to Hackensack, the club acquired the assets of the South Shore Hackensack and Pacific Railroad that included an F7 Locomotive, 5 freight cars, a caboose and approximately 1000 feet of track.

At the Fall Show in 2018, the train was on static display on the east side of the Music Building. During the summer of 2019, the section crew, rebuilt all the track, did the rough and finish grading and installed the main line track. On August 19, 2019, the golden spike was driven, indicating the completion of the main line. As you look around the railroad, you can see the golden spike about half way between mile posts and 8 and 9 on the north end of the right of way, along with a plaque between the rails commemorating that event.

During 2020, all public activities were shut down on the railroad, but the crew

continued to make improvements to the Railroad. The perimeter fence and landscaping was added and the rough grading for the Engine House was completed.

During the winter of 2020 and 2021, the framing and roof were completed for the Engine House. In May of 2021, the concrete floor was poured and during the summer of 2021, the section crew completed the enclosing of the Engine House and Yard Tracks.

Looking Back at
2023 Tractor Show



FREQUENTLY ASKED QUESTIONS

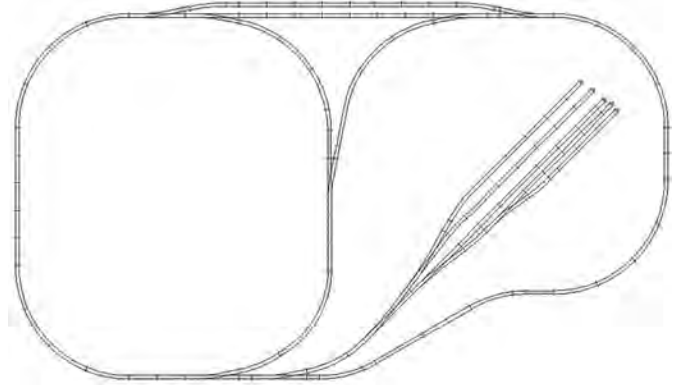
What is the size of the train?

The train is built to 1/8 scale, 1 1/2" = 1'. The gauge of the track (distance between the inside of the rails) is 7 1/2". The actual length of the rolling stock is between 5' and 8' long.

What powers the locomotives?

Each locomotive is equipped with a 16 HP V Twin gas motor with a hydrostatic hydraulic drive to all axles.

How long is the track?



628 feet of Main Track, 120 feet of Passing Siding, 210 feet in the Wye, 382 feet of Yard Tracks & 11 Track Switches

Where is the train located?

At the site of the Rice County Steam and Gas Engines Club at 11988 Faribault BLVD, Dundas, MN. (3/4 mile south of CR 20 on HWY 3)

When are rides available?

Public run days are held during the Spring Swap Meet on the Saturday and Sunday of Memorial Day weekend and during the Fall Show on Friday, Saturday and Sunday of Labor Day weekend. There is no charge for rides, but donations are accepted.

How can I get more Information about the railroad?

Email us at ricecountynorthern@gmail.com

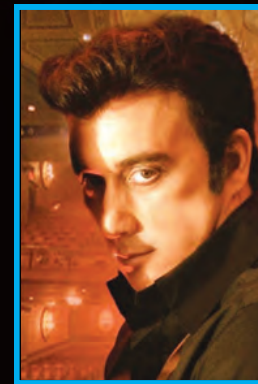


Chris Olson
is **ELVIS**
www.espsking.com

THE KING

with

CASH & DIAMOND



Doug Allen Nash is
JOHNNY CASH & NEIL DIAMOND
www.dougallennash.com

~ **A Tribute Show to The King, Man In Black & Neil Diamond** ~

Show Time Saturday, September 28
at 7:30 PM

Advance Tickets \$25.00

Day of Show \$30.00 Plus Tax



CALL 507-645-9992 or
EMAIL:

firesideloungedennison@gmail.com
TO MAKE DINNER RESERVATIONS!

www.firesidelounge.net

Rice County Steam & Gas Engines, Inc. Invites You To Our Annual



SATURDAY, MAY 24 & SUNDAY, MAY 25, 2025

Rice County Steam & Gas Showgrounds

11988 Faribault Blvd * Dundas, MN 55019 (Located 3/4 mile South of Cty. Rd. 20 on Highway 3)

Annual Swap Meet & Flea Market * Consignment Auction 9am Saturday

S.E.P.T.A. Tractor Pull 9am Sunday * Miniature Railroad Train Rides

SWAP MEET & FLEA MARKET

\$30 - Outdoor Space (30'x30')
\$40 - Indoor Space (10'x10')

SET UP 8AM-8PM, FRIDAY ONLY
Sale of firearms is prohibited

FLEA MARKET CONTACT:
Sandy Bouillez 507-581-6223

Early Registration:
Mail your name, address, phone number,
MN Tax ID# and space rent
RCSGE, Inc.
Attn: Flea Market
PO Box 76
DUNDAS, MN 55019

General Information Contacts:
Bill Becker 507-581-7225
Jeremy Sevcik 507-403-1614
Carmen Sevcik 507-649-0352

SATURDAY

CONSIGNMENT AUCTION Fundraiser

Bring your items to sell
Thursday afternoon (May 22nd), Friday all day (May 23rd)
All commissions will be donated to the Club.

AUCTIONEER: LARRY VALEK 612-978-6901 TO CONSIGN
www.valekauctions.com

SUNDAY

S.E.P.T.A. TRACTOR PULL

Registration opens 7:00AM • \$20 per hook to pull tractor

Miniature Railroad Train Rides Saturday and Sunday - No charge, but donations welcome

www.ricecountysteamandgas.com

Building the Railroad and Engine House



Rebuilding Track



Placing Gravel for Roadbed



Preparing Roadbed



Final Level of Roadbed



Setting the Track Sections



Placing Ballast



Final Tightening of Track Screws



Rough Grading for Engine House



*Great Food, Beer,
Prices and Friends!*

DINE IN • OUTDOOR SEATING • IN-STORE PICKUP



Framing for the Engine House



Pouring the Engine House Floor



Partial Siding on the Engine House



Installing Door Trim



Downtown Dundas
645-8987

Hours: Monday-Thursday 8:00am to 11:00pm
Friday 8:00am to 1:00am
Saturday 7:00am to 1:00am
Sunday 8:30am to 3:00pm

NEW HOLLAND AGRICULTURE **NEW HOLLAND CONSTRUCTION**

YOUR AUTHORIZED NEW HOLLAND DEALER

FULL LINE AG EQUIPMENT AND LIGHT CONSTRUCTION EQUIPMENT
SALES - PARTS - SERVICE

YOUR TRUSTED SOURCE FOR ALL OF YOUR CASE IH FARM EQUIPMENT, NEW HOLLAND FARM EQUIPMENT, NEW HOLLAND LIGHT CONSTRUCTION EQUIPMENT, KRONE FORAGE EQUIPMENT, AND LAWN AND GARDEN NEEDS

We offer the best sales and service locally and online.

Minnesota Ag Group, Inc.
Employee Owned
NORTHFIELD
32907 Northfield Blvd.
507-645-6643
www.mnagggroup.com

Something to Offer for All Types of Seed Needs

Yard, garden, or hunting food plots to all types and sizes of agricultural enterprises, erosion control, CRP projects and more.

Independent, family-owned and operated seed company supplying seed to Minnesota, Wisconsin, Iowa and beyond for over five decades.

WERNER SEED COMPANY

507-645-7995
Email: Wernerseed@gmail.com
wernerseed.com
3080 Millersburg Blvd. E, Dundas, MN
2.5 miles East of I-35 (exit 66) or 1.5 miles West of Dundas on Rice Co. Hwy. #1 (Millersburg Blvd E)
Hours: Monday-Friday 8-5
Saturday Summer, Fall, Winter - Call ahead; Sunday Closed

Train Rides




PROBUILT
— CONSTRUCTION LLC —

ROOFING SIDING
WINDOWS DECKS
FIRE WATER
GUTTERS

507.200.1545
info@probuiltmn.com

ProBuiltMN.com

BC807868
1359 BLUFF ST, DUNDAS, MN 55019

PROUDLY SERVING GOODHUE, DODGE, RICE, DAKOTA, OLMSTED, STEELE AND WABASHA COUNTIES

We'll Get You Back on the Road!



- AUTO BODY REPAIR
- FULL COLLISION REPAIR
- PAINTLESS DENT REPAIR
- AUTO GLASS INSTALLATION

R & D
Automotive

2500 140th Street East
Dundas, MN
507-334-8911

Sawmill



Traveling through Nerstrand?
We're on your way!

**HOPE
 BUTTER**

The Hope Creamery makes butter the old fashioned way and you can tell the difference.



WE PROUDLY CARRY SELECT NERSTRAND MEATS
Including Snack Sticks, Wieners & Bacon



Parkside General Store
 ~ Gas & Groceries ~

"The Little Store with More!"

Monday-Friday 6am-8pm; Saturday-Sunday 7am-7pm
 230 Main St, Nerstrand
 507-332-8626
 parksidenerstrand@gmail.com



Blacksmith Building

There is a plaque hanging in the Blacksmith Building and it reads;
 The Blacksmith shop was built in the 1860's on a farm east of Faribault in Wheeling Township. Owner Vernon Buscho donated it to Rice County Steam and Gas Engines Inc. in 2002.
 Volunteers disassembled brick by brick and reassembled on our showgrounds in 2003.
Thank You, Vernon!



The Guild of Metalsmiths, a non-profit organization of blacksmiths and assorted metalworkers, volunteers come every year to make items during the show.

Looking Back at 2023 Tractor Show



Is It Time for a Change?



See us for all your Fall home improvement loan needs!



HERITAGE
 — B A N K —

www.heritagebankmn.com

NORTHFIELD: 1520 Clinton Lane 507-645-6736

DENNISON: 37470 1st Ave. Ct. 507-645-5929

WEST CONCORD: 181 Main Street 507-527-2236



Proud to Support the
 49th Annual Rice County
 Steam & Gas Engines Inc.
 Tractor Show



FARMERS MILL & ELEVATOR, INC.

651-463-8041 Metro 1-800-645-5648 507-645-5648

P.O. Box 488 • 27920 Danville Ave. • Castle Rock, MN 55010

Waterford School Building

Waterford School Building was moved to our showgrounds 2023, currently it is on a foundation, but it will not be ready for visitors this year.

Waterford District School #72 represents a vanishing breed of buildings. The small rural schoolhouse. Built in 1882 at a cost of \$800, it replaced Waterford's first school. Unlike many rural schoolhouses which have been moved, the Waterford

School remains well-preserved. ..It is a white clapboard rectangular building with a high gabled roof and bell tower.

Pediments adorn its transom and windows. In 1944 when many rural schools consolidated, the township purchased the school for \$1.00 and converted it into a community center and township hall. It was remodeled and redecorated in 1976.



Waterford School Building was moved to our showgrounds 2023, currently it is on a foundation, but it will not be ready for visitors this year.



Looking Back at 2023 Tractor Show





Eat • Drink • Shop • Live

Local

Dundas Messenger Mainstreet Messenger

Email: hometownmessenger@gmail.com
www.dennisonmn.com • www.nerstrandmn.com

Drentlaw House Was Moved On Site in 2007



**PROUD TO SUPPORT THE
RICE COUNTY
STEAM & GAS ENGINES INC.
TRACTOR SHOW**

**COMMUNITY BANKING
FOR INDIVIDUALS AND BUSINESSES**

- Home Equity Loans
- Car Loans
- Construction Loans
- IRAs & CDs
- Checking Accounts
- Mortgages
- Savings Accounts
- Real Time Online Banking
- Mobile App
- Local Decision Making
- Competitive Rates

RANDOLPH 507.403.2777 | CASTLE ROCK 651.463.7590 | FARMINGTON 651.463.4014



You know us. We know you.
CASTLE ROCK BANK

HOURS: 7:30 AM TO 4:00 PM WEEKDAYS

www.castlerockbank.net



*Thank
you*

**Thank you for
supporting the
2024 Rice County
Steam & Gas
Engines Inc.
Tractor Show!**

Big Tractors Steele Wheels



Looking Back at 2023 Tractor Show



BENJAMIN BUS, INC

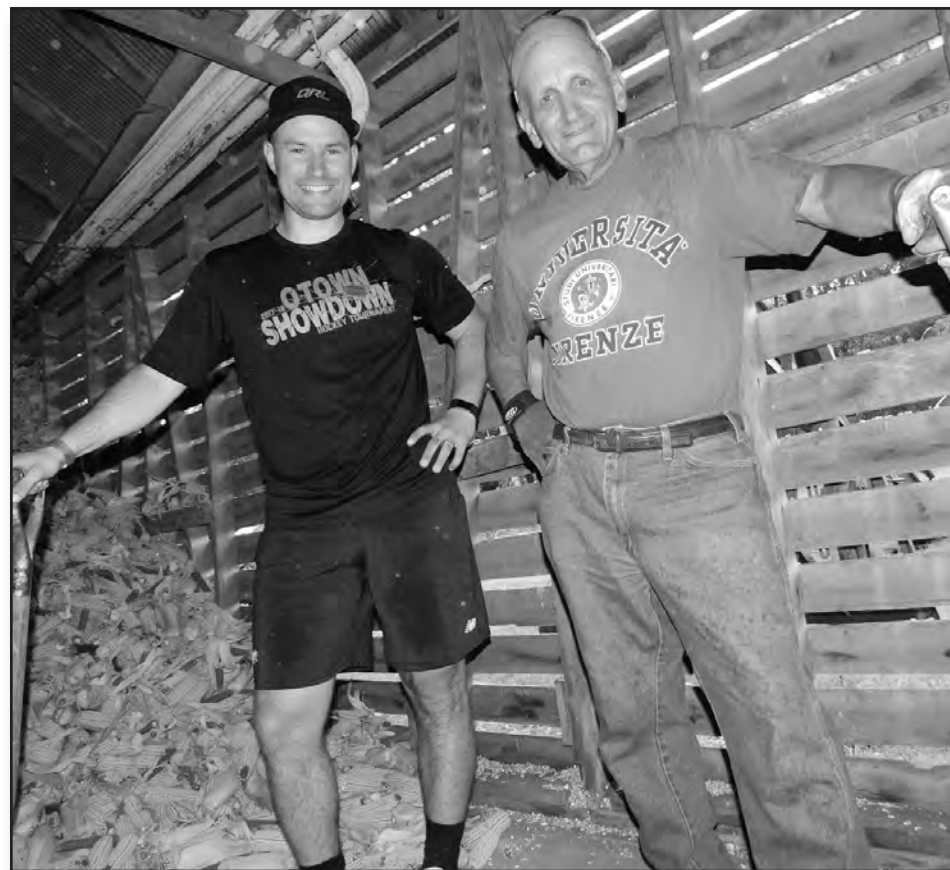


"Safety First"

32611 Northfield Blvd, Northfield • 507-645-5720 • www.benjaminbus.net



Corn Shelling



**PROUD TO SUPPORT THE
RICE COUNTY STEAM & GAS ENGINES, INC.
2024 TRACTOR SHOW**

Proudly Serving You Since 1925

Community
Co-op

Proudly Serving You Since 1925

9 Central Avenue
Faribault, MN 55021
(507) 334-2056
800-COOPOL
(800-266-7645)
www.fbocoop.com

We'll Help You Reach Your Real Estate Goals

If you're thinking of buying or selling real estate, you need a home pricing expert, a skilled negotiator, and a networking powerhouse on your side. That's where we come in as your REALTORS®.

As you work with us, you will be backed by our expertise and insights, as well as the support, visibility and networking capabilities of Edina Realty.

Whether you're buying your first home or you're ready to move up or downsize, please reach out - we'd love to help you reach your real estate goals.



Martha and Sid Kasper

Edina Realty®

Email:
SidandMarthaKasper@edinarealty.com
Phone: 612-483-1323

Martha and Sid Kasper
Licensed in: MN (Agent), WI (Agent)
REALTOR®



THANKS!

Thank you for supporting the
2024 Rice County
Steam & Gas Engines Inc.
Tractor Show!

Tractor Pull



CELEBRATING THE 49th ANNUAL RICE COUNTY STEAM & GAS ENGINES INC. TRACTOR SHOW

Nerstrand
Cannon Falls-Byron
1983

LG SEEDS

BIG GAIN

ESTINE

www.nerstrandag.com • 507-645-7972

Nerstrand Agri Center
415 Main St, Nerstrand
507-645-7972

Cannon Falls Agri Center
216 Dakota, Cannon Falls
507-263-2140

Byron Agri Center
302 Byron Ave N, Byron
800-944-2297

PROUD TO SUPPORT THE RICE COUNTY STEAM & GAS ENGINES, INC. TRACTOR SHOW

Your Locally Owned

Convenience Store

Gas • Groceries • Automotive Items • Greeting Cards

12989 Dennison Blvd. S, Dennison
507-645-2890
STORE HOURS: M-F 6am-7pm; Sat-Sun 7am-7pm
24 Hour Pay at Pump

2023 Tractor Show



Serving the Farming and Industrial Community since 1930!

TEMPLE ELECTRIC MOTOR SERVICE INC.

2121 NW 2nd Ave., Faribault, MN 55021

507-334-6989

Repairing Farm Motors, Industrial Motors, Tractor Starters, Alternators.

Call today and ask about our Magneto repair!

WWW.TEMPLE-EMS.COM



FREEWAY FABRICATING

Stainless • Aluminum • Mild Steel

On Site Welding

Repair & Fabricating

Larry Conrad, Owner

Cell: (507) 291-0116

10214 Baseline Road
Dundas, MN 55019

Proud to Support the 49th Annual
Rice County Steam & Gas Engines Inc.

Tractor Show



Werner Implement LLC

119 Main Street
Vermillion, Minnesota 55085

507-437-4435

Toll Free: 800-770-4634

www.wernerimplement.com

Rice County Steam & Gas Engines Inc.

Welcomes You To Our

49th Annual

Tractor Show

August 30, 31, September 1, 2024

All Makes & Models of Tractors & Equipment Welcome

11988 Faribault Blvd • Dundas, MN 55019 3 miles South of Northfield, MN on MN Hwy. 3

Golf Cart Rentals
at West Exhibitors
Gate
Contact
Sheryl Trebelhorn
612-245-8722

Miniature
Railroad
Train Rides
No charge, but donations
are welcome

- **FOOD STANDS** - OPEN DAILY, Breakfast served
- **FLEA MARKET** - Opens 8:00am Daily
- **PARADE OF TRACTORS - 12:00 NOON DAILY**
- **KIDS PEDAL PULL** - Saturday after Parade
- **TRACTOR PULL** - Sunday 9:00am, Registration 7:00am
- **RAFFLE TRACTOR DRAWING - SUNDAY 4:00pm**

Live Music!

Friday, August 30: Czech Concertina Club 2:00-5:00pm

Saturday, August 31: Marv Gohman 10:00am-Noon
Charlie Sticha Band 1:00-5:00pm

Sunday, September 1:

Non-Denominational Church Service 8:00am
Marv Gohman 10:00am-Noon
Dakota Ramblers Band 1:00-5:00pm

Registration of all golf carts & ATV's
will be required at Exhibitor's Gate.
Proof of insurance. No cycles.

RAFFLE TRACTOR
TICKETS
AVAILABLE
ON SITE



1st Prize - Minneapolis Moline Tractor or \$2,000 Cash
2nd Prize - Minneapolis Moline Pedal Tractor
3rd Prize - 1/16 Scale Minneapolis Moline Tractor

Activities & Demonstrations

All Makes & Models of Tractors
and Equipment Welcome

Food Stands * Flea Market * Parade of Tractors

Live Music * Tractor Pull * Petting Zoo

Horse Drawn Wagon Rides

Kids Play Areas * Kids Pedal Pull

Horse & Tractor Plowing * Sawmill Demos

Blacksmithing & More!

ADMISSION

\$10.00 Adults

FREE 12 & Under

Good for all 3 days!

The Rice County Steam and Gas Engines, Inc. is a
non-profit organization. The farmers, exhibitors
and workers time is all donated.
All income is used to improve the show!
Thank you for attending.

Leashed Pets Only * Primitive Camping
* No Alcoholic beverages allowed on grounds.

GENERAL INFORMATION

CONTACTS:

Bill Becker 507-581-1225

Jeremy Sevcik 507-403-1614

Carmen Sevcik 507-649-0352

FEATURING



MINNEAPOLIS MOLINE Tractors & Equipment

THANK YOU TO OUR CURRENT AND PAST SPONSORS AND SUPPORTERS

All Around Townie
Michelle & Joe Amy
Barta Machine - Warsaw
Benjamin Bus
Blair Quinnell/Capital Construction LLC
Complete Chiropractic
Dennison Depot
Doug's Auto Service
Elbert Bros - Owatonna
Faribo A/C & Heating
Farmers Mill & Elevator Inc.
Firehouse Liquor

Fireside Lounge & Supper Club
Frandsen Bank & Trust
Freeway Fabricating Inc./Larry & Dawn Conrad
Full Service Battery
G & N Landscaping
Gerlach Snow, Lawn & Landscape
Harmony Acupuncture Center LLC
Dwight & Ruth Hildebrandt
Sid & Martha Kasper - Edina Realty
Kline Welding Inc.
Lampert Yards - Northfield
Larsons Printing

L & M Bar and Grill
MN Ag Group
Boris & Joyce Mokoff
Nelson Lawn Care Inc
Nerstrand Agri Center
Our Circle of Friends - Bob & Rebecca Glende
Perry Kruse Electric
Peterson Cedarworks
ProNails Spa & Massage
R&D Automotive LLC
RE/MAX Results - Steven Holman
Sissy's On 7th Gifts & Home Decor

Sunsdahl's Restoration Tooling
Quarterback Club Inc.
The Hop Shop - Small Engine Repair
The Messenger Newspapers
Bernice Wenzel
Waterford Warriors Snowmobile Club Inc.
Werner Seed Company
Ziggy's LLC

If we missed your name,
please accept our apology.
Your support is appreciated.

INFORMATION ON OUR WEBSITE AND FACEBOOK: ricecountysteamandgas.com