

The Leader

September 6, 2023
Issue 36/ Vol. 134

IN DEPTH • IN TOUCH • INDEPENDENT • SINCE 1889

\$2.00

Woman crashes through pizza parlor's lobby

ANNA TALLARICO
ATALLARICO@PTLEADER.COM

A woman drove through the Papa Murphy's door and into the lobby around noon on Tuesday, Aug. 29.

According to Deputy Chief Jeff Thaxton, the woman lost control of her vehicle; she had a medical condition, and believed she was hitting the brake as she hit the accelerator instead.

"Her son, who had his license removed [for a similar reason] was in the passenger seat, telling her to stop," Thaxton said.

"She said she tried."

Justin Jennings, manager at Papa Murphy's, was inside when it happened. "I was just making pizza—you know, as a pizza man does," he said.

"She drove all the way in. She cleared both doors, clipped the wall closest to the big windows, hit the pop cooler and shattered it."

Jennings marveled at how fortunate he and everyone else involved was.

"A customer had just left the store two minutes prior," he told The Leader.

"Lucky timing."

He added that the car also stopped just short of the counter, where they make the pizzas.

"I was pretty calm through the whole thing," Jennings said.

"Me and my coworker jumped out of the way when it happened. Then we went to check and see if she and the passenger were alright."

Jennings noted they were uninjured, but badly shaken.

"We escorted them through the back, since, you know, there was a car in the front door. The firemen intercepted and took things from there," he explained.

Sergeant Kamal Sharif was at the scene. He submitted a driver evaluation request form. Therefore, the state will determine whether the woman's license will get revoked based on this incident.

No injuries were reported.

The damage will be assessed and repaired. Until then, Papa Murphy's remains open with normal hours, just not a normal door.



Around noon on Tuesday, Aug. 29, a woman lost control of her vehicle and drove through the Papa Murphy's door and into the lobby. *Leader photo by Anna Tallarico*

Lightning likely cause of wildfire; caution urged

KATHY CRUZ
KCRUZ@PTLEADER.COM

East Jefferson Fire Rescue is asking local residents to stay vigilant after firefighters spent hours last week at the site of a brush fire on Oak Bay Road near Highway 19.

"The fire season is not over," warned Fire Chief Bret Black. "Although we see periodic cooling and moisture as we enter fall, the dead vegetation and understory is still ready to burn."

The brush fire on Oak Bay Road that was discovered Wednesday morning, Aug. 30, is believed to have been started by a lightning strike during a thunderstorm the day before. According to information released by EJFR, the department believes that a tree struck by lightning smoldered during the night and then caught fire.

The brush fire was in steep terrain some distance from the roadside. A nearby resident discovered it after he smelled something burning.

Responding firefighters had the fire extinguished within about 30 minutes but remained at the site for several hours in case it reignited.

A burn ban is currently in effect in Jefferson County and will remain in effect until conditions improve. Washington has been under a state of emergency for wildfires since Aug. 19 when Gov. Jay Inslee signed an emergency declaration.



Breaking free Quilcene running back Andrew Perez-Lopez sheds a tackle and runs for a first down during a game against the Naselle Comets played in Port Townsend's Memorial Field on Saturday. *Leader photo by Steve Mullensky*

Hospital set to break ground

ANNA TALLARICO
ATALLARICO@PTLEADER.COM

Jefferson Healthcare is set to break ground on their \$85,000,000 campus expansion and modernization project. They will host an event to kick off the project 4 p.m. Thursday, Sept. 7 on the back patio of the '65 building. This will be the last gathering there; that very building will be demolished to make way for newer, safer infrastructure.

The services currently offered in that building — express clinic, diagnostic MRI, OB/GYN clinic, vascular imaging, surgery pre-op, administration, and the cafeteria — will be temporarily relocated. The

express clinic and OB/GYN clinic will move to other sites within Jefferson Healthcare. A mobile MRI trailer will be brought in.

"We will not drop the quality of care," assured Jake Davidson, Chief Operating Officer. "It'll make it a bit harder, but we will do everything in our power, communication wise, to ensure patients know where they're going before they need to come to our campus."

The new facility is projected to open January 2025. It will expand its medical oncology department, dermatology clinic, wound clinic, express care clinic, and OB/GYN clinic. It will also develop space for new specialty services such as pulmonology, neurology, ENT, and an updated MRI

experience.

"This is a tremendous advantage for patients who previously had to travel an hour or more to receive specialty care," said a representative of the hospital.

As the main healthcare system of the county, Jefferson Healthcare promises to "work closely" with engineers to ensure continuation of all services during construction.

Parking will also be updated to accommodate new state codes, providing a minimum amount of electronic vehicle charging stations.

The expansion project is estimated to create an additional 70 to 75 jobs at the hospital over the next five years.

Burglary of church property

THOMAS MULLEN
PAPERBOY@VCN.COM

An eyewitness account of a break-in led to the arrest of Kayden Austin Haltom, 18, of Port Hadlock.

Haltom is charged with burglary, malicious mischief, possession of burglary tools, and unlawful possession of a dangerous weapon. If convicted on all counts, he faces up to 13 years in prison and \$35,000 in fines plus restitution and assessments.

According to Port Townsend Police Officer Jon Stuart's Probable Cause Report, he received a call on July 31 at 7:22 a.m. of a burglary in process at the San Juan Baptist Church on Discovery Road.

The witness stated seeing someone trying to break into a shed behind the church and also that the suspected burglar was believed to be living in a smaller

shed on the church property.

"I arrived on the scene and began walking up to the small shed at an angle. As I approached, I saw a male subject's head pop out from the door. I ordered the subject out of the shed and onto the ground. I noted he was wearing a camo jacket and black pants with a backwards hat. He complied and I detained him into handcuffs to the rear," Stuart states in his report.

After identifying the man, he discovered drug paraphernalia in the shed and that it appeared that someone was staying in the shed. Stuart reports that Haltom told him Johnny Fowler was staying there, whom the eye witness had originally suspected of the crime.

Further investigation of the scene led to the discovery of broken padlocks on the small shed and a larger shop, along with some bolt cutters. While



San Juan Baptist Church. *Courtesy photo*

patting down his suspect, Stuart found brass knuckles and advised Haltom that he was not allowed to have them. He replied saying they sell them at the gas station, Stuart stated.

The officer noted security cameras on site and later contacted the church's pastor Noel Muscutt, who reported that they had located a male sleeping in the shed and had recently placed a padlock on the shed to

prevent further intrusion.

Stuart reports that upon reviewing the security footage, he identified the burglary suspect as Haltom.

The pastor stated that the church had recently been trying to help Haltom, however he did not have permission to be on the property.

A bench warrant was issued for Haltom's arrest on Wednesday, Aug. 23.

Land Trust fundraising goals met

LEADER NEWS STAFF
NEWS@PTLEADER.COM

Jefferson Land Trust has announced that it has reached its fundraising goals for the Quimper Wildlife Corridor Challenge, raising \$3.14 million to protect up to 167 additional acres of the corridor.

In actuality, the land trust raised more than that. An online check of the

fundraising initiative by The Leader found that, as of Thursday, Aug. 30, 456 supporters had donated \$3,272,924 to the project, surpassing the goal by four percent.

The Quimper Corridor's acreage provides a wildlife habitat, natural stormwater management and miles of recreational trails.

Financial support from the community enabled the land trust to protect 40

acres in the corridor through 27 separate transactions since 2021. It also provided resources to help facilitate the purchase and permanent protection of 107 acres of forestland that make up Quimper West, Quimper East and Baby Quimper through the Washington Department of Natural Resources' Trust Land Transfer program to be completed in the coming months, an announcement from the land trust stated.

CORRECTION

In the Aug. 23 article on Gunther the whale's installation, The Leader mistakenly referred to the Port Townsend Marine Science Center as the Maritime Center. The two organizations are separate.

inside
this issue... 24 pages

FRONT

Opinion Forum..... A5
News Round Up..... A2
Law & Justice..... A4

ARTS & ENTERTAINMENT/CLASSIFIEDS

Arts & Entertainment A15
Community Calendar A11
Classifieds & Legal Notices A7-A10

INSERTS: WORKING WATERFRONT,
SAFEWAY, VALASSIS, THE
PRODUCTION ALLIANCE,
SPORTSMAN'S WAREHOUSE

ptleader.com



NEWS ROUNDUP

Local writer makes finals

A Port Townsend writer made the list of finalists for the Washington State Book Awards. Sara Peté, community outreach librarian, reached out to The Leader on behalf of the Washington Center for the Book (an affiliate of the Library of Congress Center for the Book administered by Washington State Library) ahead of time to recognize the Port Townsend finalist.

The Washington Center for the Book selected 30 finalists in seven categories for outstanding books published by Washington authors in 2022. This is the 57th year of the program (it was formerly known as the Governor's Writers Awards).

The Port Townsend finalist, Hannah Lee Jones, made the top five in the "Poetry" category with her work, "When I Was the Wind," published by June Road Press.

The finalists were announced noon Tuesday, Sept. 5. The winners of each category will be announced noon Tuesday, Sept. 26.

SR 19/Beaver Valley Road near Port Ludlow closes for 10 days

A reminder to all travelers on State Route 19/Beaver Valley Road near Port Ludlow: The highway will close to all travelers for 10 days starting 6 a.m. Tuesday, Sept. 5. The road will reopen at 6 a.m. Friday, Sept. 15.

The highway will close to traffic between Egg and I Road and Larson Lake Road. Access will be maintained for local traffic. No access will be available through the closed work zone.

People will detour around the closure using Center Road and SR 104. A temporary traffic signal will be placed on SR 104 at Center Road. The speed limit on a portion of SR 104 will be reduced from 60 mph to 35 mph between mileposts 4.08 and 4.62.

Contractor crews for the Washington State Department of Transportation will work around-the-clock for 10 days. The work will remove and replace a culvert blocking fish passage at Swansonville Creek.

Travelers are encouraged to plan additional time to travel through the detour route.

They can sign up for email alerts for construction in Jefferson and Clallam Counties. Find the latest information about highway closures on the WSDOT app and the WSDOT statewide travel map.

Liquor and Cannabis Board adopts new rule

The Washington State Liquor and Cannabis Board (LCB) adopted new rules that allow private clubs to add additional membership drives and host consecutive membership drives.

On July 28, 2022, Keith Laurent, on behalf of the Vancouver Elks #823, submitted a petition for adoption, amendment, or repeal of a state administrative rule to the Washington State Liquor and Cannabis Board.

The petition requested that the Board amend WAC 314-40-040(6) to allow private clubs to add one additional membership drive per calendar quarter (for a total of eight per calendar year) and host a membership drive on two consecutive days during one quarter per calendar year, while consecutive days of membership drive are currently prohibited.

On Sept. 14, 2022, the board accepted the petition. Consistent with RCW 34.05.330(1) (b), the board agreed to initiate the rulemaking process and begin collaboratively engaging with stakeholders and any interested members of the public to explore the possibility of allowing private clubs to add additional membership drives, host consecutive membership drives, or both. To develop potential rule language, a set of conceptual draft rules was shared publicly through GovDelivery on May 3, 2023. As part of the collaborative rule development process, the messaging asked for stakeholder feedback and suggestions for revisions to the conceptual draft rules by May 17, 2023. Most of the feedback received was supportive in nature and did not include any specific suggestions for changes to the conceptual draft rule language. Based on the feedback received, the LCB did not make any changes to the conceptual draft rule language.

Jefferson Land Trust seeks first forest manager

For the past 13 years, the Jefferson Land Trust has fought to preserve and protect the 918-acre Chimacum Ridge Community Forest. Thanks to those efforts, the woods will remain undeveloped and managed as timberland.

Now the land trust is taking its safeguarding of the forest to a new level by creating a new paid position: that of community forest manager. The nonprofit is currently accepting applications for that role.

The person hired for the public-facing job will work with the local community, visitors, volunteers, partners, tribes, schools, and other land trust staff to plan for and ultimately manage the woodland to ensure desired ecological, economic, social, cultural and educational public benefits.

Those interested in applying for the job should act quickly. Priority will be given to applications received before Friday, Sept. 8.

The community forest manager's responsibilities will include providing safe and equitable access for visitors through education, engagement, programming, and building and maintaining associated infrastructure that includes signage, a parking lot, trails, a community pavilion and viewpoints.

There is also a technical aspect to the role. The person hired will work with contractors and public agencies to manage timber harvests that are in line with priorities set for the community forest.

The land trust has enlisted an HR consultant, Kinship HR, to assist in a fair and equitable hiring process. Applicants are invited to email a one-page cover letter and resume to kc@kinshiphr.com with the subject line "Community Forest Manager." Questions can be emailed there as well. The land trust asks that all inquiries and resumes be directed to the Kinship HR.

More information about the position, the Chimacum Ridge Community Forest and the work of the Jefferson Land Trust can be found at saveland.org.

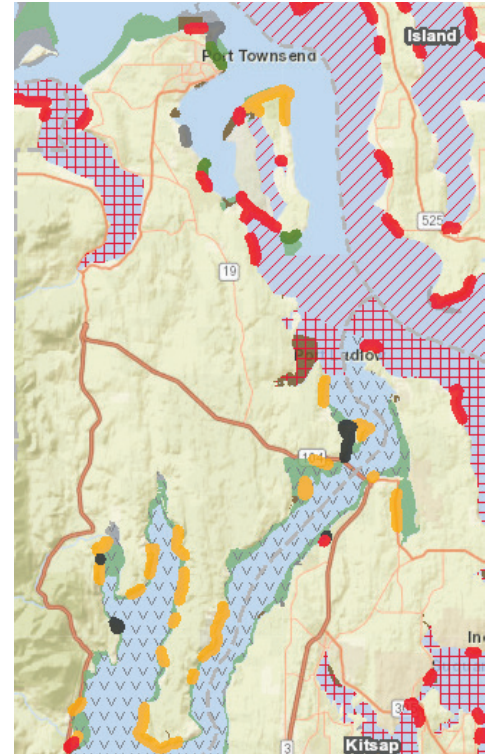
Discovery and Mats Mats Bays, Port Ludlow shellfish closure

Recent shellfish samples from Discovery Bay, Mats Mats Bay and Port Ludlow were found to have high levels of the biotoxin that causes paralytic shellfish poisoning (PSP), and the Washington State Department of Health has closed the areas for recreational harvesting of all shellfish species. Jefferson County Public Health has posted warning signs at public access points in Discovery Bay, Mats Mats Bay, and Port Ludlow.

Paralytic Shellfish Poisoning can be fatal. Illness is caused by eating shellfish contaminated with toxins from the naturally occurring marine plankton Alexandrium. The biotoxin is not destroyed by cooking or freezing contaminated shellfish. Symptoms of PSP can appear within minutes or hours and usually begin with tingling lips and tongue, moving to the hands and feet, followed by difficulty breathing and paralysis. Anyone experiencing any of these symptoms after consuming shellfish should contact a health care provider immediately. For extreme reactions, call 911.

Class on marine communications

Point Wilson Sail and Power Squadron will present a class on marine communications systems in a nine-week format beginning on Thursday, Sept. 14 through Nov. 16 at the Port Ludlow Yacht Club from 6 p.m. to 8 p.m. Instructor is Gordan Lacey, ABYC certified and owner of Hood Canal Marine Services. Topics include use and installation of VHF radios, emergency communications systems for recreational boaters, EPIRB, AIS, radio procedures, and preventative and corrective maintenance. Cost for non-squadron members is \$74 and includes an e-textbook. Call Linda Newland at 360-437-9350 or email sailbabe123@gmail.com to sign up or for more information.



A map of shellfish closures in Jefferson County

Port Ludlow planned power outage

Power to 1,800 residents in areas surrounding and south of Port Ludlow will be out for 10 hours on Friday, Sept. 8. The PUD is conducting the planned outage from 5 a.m. to 3 p.m. to accommodate state-mandated road construction under electric transmission lines.

Installation of an 18-foot, three-sided fish bypass culvert by Washington Department of Transportation (WSDOT) contractors requires use of a large-capacity crane within four feet of utility transmission power space, prompting the outage.

Beaver Valley Road (State Route 19) is a main transmission corridor for the PUD. Crews have conducted switching operations to energize as many customers as possible.

The outage area extends from Swansonville Road to Highway 104 and south to Shine Road and Thorndyke Road Customers east of State Route 19 from the Oak Bay Road and Paradise Bay Road junction in Port Ludlow and south will also be impacted. Affected customers have been alerted to the outage by the PUD with automated calls and a postcard mailer.

The fish bypass installation under State Route 19 near Swansonville Road requires a full roadway closure. WSDOT has set a 10-day closure for State Route 19 from Chimacum to Highway 104 beginning at 6 a.m. Tuesday, Sept. 5 and ending at 6 a.m., Friday, Sept. 15.

During the 10-day closure, a signed detour route via Center Road will lead travelers around the work zone.

TAX & ACCOUNTING ADVISORY SERVICES

For Small Businesses, Individuals, and Corporations



DALE E OFFRET
CPA & ASSOCIATES
Advice Made Simple



Specializing in Individual & Small Business Income Tax Planning & Preparation

Now Accepting New Clients!



107 S. Main St. #E103 • Coupeville, WA 98239
360.678.0707 • dale-cpa.com



12-Month Certificate:

5.00%

APY*

Anchored in this Community

~ Since 1889 ~



\$70 for a 1 Year Subscription & Online Access to ptleader.com

In Depth • In Touch • Independent



(360) 385-2900 ✕ ptleader.com

226 Adams St. ✕ in Port Townsend

What's your twelve month plan?
Let us help you achieve it.



360.426.1601
pcfcu.org

*Annual Percentage Yield (APY). Dividends are computed on the actual amount in the account and are paid quarterly. There are substantial penalties for early withdrawal of certificate funds. Early withdrawal of certificate funds is subject to a penalty of one half of the interest that would be earned over the original term of the certificate. The penalty is calculated on the amount withdrawn. Fees can reduce the earnings on your account. Minimum balance to open share certificate/CD is \$500. Membership eligibility required. Terms, restrictions and conditions apply. Federally insured by NCUA.

ON THE WATERFRONT

VESSEL WATCH

PORT TOWNSEND HAS A RICH MARITIME HISTORY, AND THE STRAIT OF JUAN DE FUCA IS ONE OF THE BUSIEST MARINE CORRIDORS IN THE WORLD. HERE ARE SELECTED SHIP PASSINGS NEAR PORT TOWNSEND ON SEPT. 4

FISHER (RIGHT) passed Point Wilson at 0749 Monday, Sept. 4 at 13 knots with east direction heading to Pohang, KR. FISHER is a logistics naval vessel that was built in 1999 (24 years ago) and is sailing under the flag of USA. Its carrying capacity is 29813 t DWT and its current draught is reported to be 10.6 meters. Its length overall is 289.33 meters and its width is 32.26 meters.



FISHER

NORDFJORD passed Point Wilson at 0749 Monday Sept. 4 at 12.1 knots with south-east direction. NORDFJORD is a pleasure craft that was built in 2007 (16 years ago) and is sailing under the flag of Marshall Is. Its length overall is 25 meters and its width is six meters.

EVER FAR passed Oak Bay at 0613 Monday Sept. 4 at 20.8 knots with northwest direction. EVER FAR is a container ship that was built in 2020 (three years ago) and is sailing under the flag of Liberia. Its carrying capacity is 11850 TEU and its current draught is reported to be 12 meters.

ROAMER passed Oak Bay at 0841 Monday Sept. 4 at 10 knots with east direction. ROAMER is a pleasure craft and is sailing under the flag of USA. Its length overall is 14 meters and its width is four meters.

TIDELANDS passed Port Ludlow at 0933 Monday Sept. 4 at 7.6 knots with northeast direction. TIDELANDS is a pleasure craft and is sailing under the flag of USA. Its length overall is 12 meters and its width is four meters.

AFTER MIDNIGHT passed Port Ludlow 0852 Monday Sept. 4 at 11.2 knots with northeast direction.

AFTER MIDNIGHT is a pleasure craft and is sailing under the flag of USA. Its length overall is 15 meters and its width is five meters.

IN THE RED passed Kilisut Harbor at 1208 Monday Sept. 4 at 4.9 knots with north direction. **IN THE RED** is a pleasure craft that was built in 2021 (two years ago) and is sailing under the flag of USA. Its length overall is eight meters and its width is three meters.



NORDFJORD



AFTER MIDNIGHT



TIDELANDS



IN THE RED



EVER FAR

21ST ANNUAL JEFFERSON COUNTY FARM TOUR

Saturday & Sunday, Sept. 16-17
10AM - 4PM | Self-Guided Tours | 17 Locations
Suggested \$10 Donation per Carload

Arabians at Egg & I, Bazaar Girls Yarn Shop, Center Valley Animal Rescue, Compass Rose Farm, Egg & I Pork, Gray Fox Farm, Kodama Farm, Lonely Pines Farm, Sailor Vineyard, Shy Acre Farm, Soft Step Farm, Sunfield Farm, White Lotus Farm, Wilderbee Farm, school gardens at Salish Coast, PT High School, and Chimacum Creek, and booths featuring Ananda Hills Farm, Jacob's Fleece Farm, Jefferson Land Trust, and Space Twins Provisions.

Plus Special Events: Live Music & Dancing, Bicycle Tour, Farmers Markets, Quilcene Fair & Parade, and at Finnriver enjoy a Makers Market, Art Demos, Cider Room, Food Vendors, and more!

GetOnTheFarm.org

New
Keyless Storage Units Available Now!
Rent Online

Safest Storage in the County!
(360)301-5692
51 Ness Corner Rd • Pt. Hadlock
www.larrocstorage.com

51th Annual Crafts by the Dock
Arts & Crafts Fair
SEPT. 9 & 10
Sat. 10-6 & Sun. 10-5
Downtown by Pope Marine Park

One block from the Wooden Boat Festival

ptartsguild@yahoo.com
www.PortTownsendArtsGuild.org
Proceeds benefit local scholarships in the arts • Sponsored by PT Arts Guild



Blood at the scene leads to arrest

THOMAS MULLEN
PAPERBOY@VCN.COM

Investigators suspect that on the night of March 31, Michael Ardell Curtis, 45, broke into Fat Smitty's Restaurant located at the bottom of Discovery Bay.

"Curtis used an unknown object to break out a window in the back-kitchen area and accessed the building ... Curtis then used a metal cutting device, such as a grinder, to defeat the locking mechanism of the ATM located inside and removed approximately \$11,000 in US currency," court documents states.

Jefferson County Sheriff's officer Brian Anderson detailed the scene in his probable cause report.

"It appeared the suspect had cut his hand while making entry into the building. Multiple similar blood smudges were located throughout the restaurant, giving the appearance that the suspect might have been crawling through the building, not wanting to stand up due to the multiple motion sensors located in the building," Anderson said.

The officer collected samples

for DNA testing, which were sent to the Sorenson Forensics laboratory in Utah. On July 18, the lab matched the sample to Curtis.

Curtis was last contacted by the sheriff on May 2 of this year and arrested for the attempted burglary of PNW Press Espresso and Eats in Quilcene.

Curtis has multiple convictions for burglary dating back to 2014, along with several convictions for felony theft, court documents stated.

The court also received a letter of support from a medical practitioner in Bellevue who stated that Curtis "has shown a lot of commitment to better his mental health. He is pleasant, cooperative, friendly, and is compliant with treatment. He has not missed any appointments and I can clearly see a great improvement in his overall mental state."

Curtis is charged with two counts, burglary in the second degree, and theft in the first degree. Each count carries a maximum penalty of 10 year imprisonment and/or \$20,000 in fines plus restitution and assessments.

A trial date is set for October 9.



Dollar bills hang on the walls and ceiling of Fat Smitty's. Courtesy photo

SHERIFF'S LOG

Due to ongoing technical difficulties at the Sheriff's office, the Sheriff's Log will not be in this week's Leader. We apologize for the inconvenience and thank you for your patience.

The Log will return soon.



PORT TOWNSEND POLICE LOG

The Port Townsend Police Department received a total of 168 calls for service between Saturday, Aug. 19 and Friday, Aug. 25. Below are selected reports.

At 7:07 a.m. Saturday, Aug. 19 in the 300 block of Sheridan Street, a report came in of a fawn stuck in a fence. Officers were able to free the fawn.

At 10:09 a.m. Saturday, Aug. 19 in the 400 block of Kearney Street, a caller reported a male asking for money on a business's property. When asked to stop, the male began to shout profanities and racial slurs. The male was contacted by officers, who discovered he had an out-of-county warrant. However, the other county would not extradite. The male was trespassed, and he agreed to leave.

At 1:08 p.m. Saturday, Aug. 19, a collision occurred between a vehicle and motorcycle at the corner of Taylor Street and Water Street. There were no injuries; an accident report was completed.

At 12:23 a.m. Sunday, Aug. 20 in the 200 block of Monroe Street, a caller complained of loud music coming from Water Street. But as per Port Townsend municipal code, music and noise are permitted in the downtown area until 1 a.m. No action was taken.

At 1:58 a.m. Sunday, Aug. 20, an alarm went off at the Port Townsend High School. Officers confirmed it was a false alarm.

At 4:17 p.m. Sunday, Aug. 20 in the 400 block of W Sims Way, a burglary suspect was arrested. The suspect was also wanted in Clallam County.

At 9 p.m. Sunday, Aug. 20 in the

4600 block of Trail Crest Drive, a caller said they could see two people on their front porch via a security camera. The subjects stated their cell phone died and they needed help; they wanted the reporting party to open their door. The reporting party then updated the officers that the subjects got into a taxi and left.

At 8:42 a.m. Monday, Aug. 21 in the 200 block of Madison Street, multiple reports came in of a male sitting on a park bench, screaming and yelling. When officers arrived, they watched as the male moved to a bus shelter, then got on a bus. No issues were observed.

Between 9:50 a.m. and 10:27 a.m. Monday, Aug. 21, officers conducted traffic enforcement in various locations in the city. They carried out four traffic stops in an approximate 30-minute time frame.

At 10:28 a.m. Monday, Aug. 21 in the 800 block of Jefferson Street, a caller reported someone knocking on the door for the past 10 minutes. The subject would not respond verbally. The reporting party yelled at the subject to leave, and they left the area before officers arrived.

At 11:27 a.m. Tuesday, Aug. 22, a caller stated a gold passenger car almost hit a pedestrian in the road at the corner of Water Street and Adams Street. No one was injured. Due to the vague vehicle description, officers were unable to locate them.

At 4:52 a.m. Wednesday, Aug. 23 in the 1400 block of W Sims Way, an officer contacted an individual he recognized. The subject had a confirmed warrant. The female subject resisted the officer's attempt to arrest her. She was taken into custody and had

an added charge of resisting arrest.

At 1:03 p.m. Thursday, Aug. 24 in the 800 block of Grant Street, a caller reported two fire extinguisher boxes had been destroyed and three fire extinguishers stolen. The incident occurred the week prior, and the items had been replaced before the police were called. The case is under investigation.

At 8:32 p.m. Friday, Aug. 25 at Kah Tai Park, an officer recognized a male subject; dispatch confirmed he had an outstanding warrant. The subject was arrested.

At 10:56 p.m. Friday, Aug. 25 in the 600 block of Thomas Street, officers responded to a disturbance. They noticed a loaded shotgun in the vehicle. An arrest was made for an unlawful possession of a firearm by a convicted felon.

PORT TOWNSEND

Whale Watching





Half Day, Full Day & Multi-Day Tours

See wild orcas, humpback whales, minke and gray whales on our family-run boats. Half day and full day cruises from Port Townsend. We guarantee you'll see whales or your next trip is free!

38th anniversary family business

PORT TOWNSEND HALF DAY TOURS

April 28 - October 1 • 10am departure
Oct. 2 - October 29 • 12pm departure

PORT TOWNSEND SAN JUAN ISLAND ALL DAY TOUR

April 28 - September 24 • 9am daily departures



RESERVE ONLINE

PugetSoundExpress.com
or call 360-385-5288




Port Townsend • Point Hudson Marina, 227 Jackson Street
Port Angeles • Port Angeles Wharf, 115 E Railroad Avenue

Phone and Internet Discounts Available to CenturyLink Customers

The Washington Utilities and Transportation Commission designated CenturyLink as an Eligible Telecommunications Carrier within its service area for universal service purposes. CenturyLink's basic local service rates for residential voice lines are \$30.50 per month and business services are \$43.50 per month. Specific rates will be provided upon request.

CenturyLink participates in the Lifeline program, which makes residential telephone or qualifying broadband service more affordable to eligible low-income individuals and families. Eligible customers may qualify for Lifeline discounts of \$5.25/month for voice or bundled voice service or \$9.25/month for qualifying broadband or broadband bundles. Residents who live on federally recognized Tribal Lands may qualify for additional Tribal benefits if they participate in certain additional federal eligibility programs. The Lifeline discount is available for only one telephone or qualifying broadband service per household, which can be either a wireline or wireless service. Broadband speeds must be at least 25 Mbps download and 3 Mbps upload to qualify.

CenturyLink also participates in the Affordable Connectivity Program (ACP), which provides eligible households with a discount on broadband service. The ACP provides a discount of up to \$30 per month toward broadband service for eligible households and up to \$75 per month for households on qualifying Tribal lands.

For both programs, a household is defined as any individual or group of individuals who live together at the same address and share income and expenses. Services are not transferable, and only eligible consumers may enroll in these programs. Consumers who willfully make false statements to obtain these discounts can be punished by fine or imprisonment and can be barred from these programs.

If you live in a CenturyLink service area, visit <https://www.centurylink.com/aboutus/community/community-development/lifeline.html> for additional information about applying for these programs or call 1-800-201-4099 with questions.



Opinion

It could happen here

By all accounts, the tragedy in Lahaina should have, if not could have, been prevented.

We know now that the emergency sirens were not sounded because the leader of the Maui Emergency Management Agency said that the citizens of Lahaina would have heard the sirens and, believing that a tsunami was approaching, ran into the fires which subsequently burned most of the city to the ground and killed at least 115 people; three times that number are still listed as missing.

None of us would want to trade places with Maui Emergency Management Agency Administrator Herman Andaya, who made that fatal call.

The series of events that led to those deaths has been called a perfect storm. High winds from nearby Hurricane Dora resulted in low barometric pressure, other fire activity on the island, and abnormally dry conditions all helped fuel the blaze.

But it's difficult to imagine that if Andaya had sounded the alarm, the people of Lahaina would have run into the flames that blocked their path from escaping a non-existent tsunami.

Maui's website calls its sirens an "all-hazard" system, which are intended to be used for a variety of natural and human-caused events, including fires. They call their four sirens in the Lahaina area the "largest single integrated outdoor siren warning system for

public safety in the world."

Andaya has resigned from his post, citing health problems, but we can learn from this horrific tale.

Officials in Maui opted to activate warnings through people's cell phones but electrical power and cell service was down in much of the area when the fires sparked and spread.

Traffic backups and multiple road closures caused by downed power lines led to some dying in their cars as they tried to escape. Some jumped over a sea wall and into the ocean where they endured punishing winds and smoke while watching their neighborhoods reduced to cinders as they awaited Coast Guard rescue.

Could any or all of this have been prevented? Yes, but at what cost?

Hanging power lines between utility poles in the air is the least expensive method of delivering electricity but certainly not the safest.

In lieu of that, working with knowledgeable and well-trained fire prevention specialists is a good start.

Fortunately, East Jefferson Fire Chief Bret Black and his crew are working toward a more prepared response — but that involves a knowledgeable and prepared citizenry.

A consultant, the fire district, and the county will be presenting at the Chimaquam Farmers



Market on Sept. 17 — attending that event is a good start.

Preparation for disaster begins with a "go bag" in your vehicle or made ready to take along. That bag should contain: face masks or face coverings, a three-day supply of non-perishable food, three gallons of water per person, local paper maps, prescriptions

or special medications, a change of clothing, extra eyeglasses or contact lenses, an extra set of car keys, credit cards, cash or traveler's checks, a first aid kit and flashlight, a cell phone and laptop power supply, a battery-powered radio and extra batteries, sanitation supplies, copies of important documents (insurance, birth

certificates, passports, etc.), and pet food and water.

Black urges citizens to sign up for Nixle alerts by texting jeffcodem to 888777. Nixle is a community information service dedicated to helping citizens stay connected to emergency services and advisories.

Are you ready for a little ultraviolence?

The best description I ever heard for pro football was "expert violence."

But I watch it anyway. And I should know better.

As a young sports writer just out of college, my sports editor in Iowa gave me a scorebook and sent me to cover Friday night high school football games.

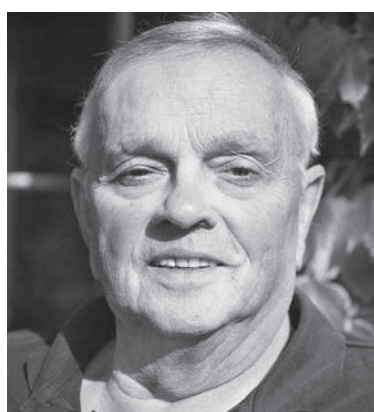
I walked the sidelines, entering every single play as the official scorer.

But it was a sobering sight, seeing those violent teenage collisions up close. Why would any parent want to run the risk of their son being paralyzed because of these collisions? Not me.

Before that, as sports editor of the school newspaper at Colorado State, I had occasionally walked the sidelines. Those collisions were even more violent. I shuddered after seeing some of them.

But even after seeing all these human head-ons, I still wasn't prepared for what followed.

As a sports writer for the Montreal Gazette, I was assigned to cover a college game between



BILL MANN
MANN OVERBOARD

McGill and Bishop's University, in rural Lennoxville, Quebec. The game was going along normally, when it suddenly stopped. A player was down, motionless. It was a chilling 15 minutes.

The McGill player had been paralyzed. I'll never forget his name: Butch Voce. I visited him in his hospital room a few days later. Ironically, his room in the Royal Victoria Hospital looked out on... the McGill practice field.

I'll be thinking of Butch when I watch the Seahawks open their season Sunday, and hoping none of the players are gravely injured.

We got to know a guy named Johnny Rogers in Montreal. He was the first Heisman Trophy winner to play in the Canadian Football League. Johnny, who played at Nebraska, told me it usually took at least five days before he stopped hurting from a game.

I was hoping to watch some games this season with Markus Koch, a lifeguard at the pool here who played in two Super Bowls with the (then-named) Washington Redskins.

Koch, German-born and Canadian-educated, has left the building. He just returned last week to his alma mater, Idaho State, to get a master's degree in psychology.

Koch, a defensive lineman, once showed me his knees, which had more cross hatches than a crossword puzzle. Knee surgeries from his playing days.

But Koch, for reasons I don't

understand, wants no part of football any more. He even sold his valuable Super Bowl rings.

He came over to my place to watch a Seahawks game last season. But Koch, a bright, introspective guy, didn't really want to watch the game, and often averted his eyes. He wanted to talk philosophy and writing.

He is a football divorcé. I can understand that. But it's rare.

I told him I'd seen plenty of high school and college player collisions, but I'd never been down on the sidelines during an NFL game.

"It's worse than you can imagine," he said quietly, shaking his head.

But, yeah, I'll be watching this weekend — and hoping no player gets seriously hurt.

— Want to know what a true student-athlete looks like? Look no further than just to our north, where Canadian colleges don't have any athletic scholarships. Amazing. Even a step further, I met some McGill footballers who were...fourth-year med students!

That seemed impossible to believe to this Yank.

—Want to watch...or listen to...a great and entertaining radio/TV show? Go to YouTube and search for the Mark Thompson Show. Mark is an old friend from back when he was a TV weatherman at the NBC station in San Francisco. (He even asked me to fill in on his weathercast one night, which was frightening, both to me and to viewers.)

Thompson's current YouTube show is a continuation of the talk radio show he was doing in S.F. on major, 50,000-watt KGO. When the station was "blown up" — the format was dropped — Thompson went to YouTube. He's one of the brightest and cleverest people in broadcasting. His regular guests include such worthies as former ABC White House reporter Jim Avila and Pulitzer-winning journalist David Cay Johnson, whom you may have seen on MSNBC. Check it out.

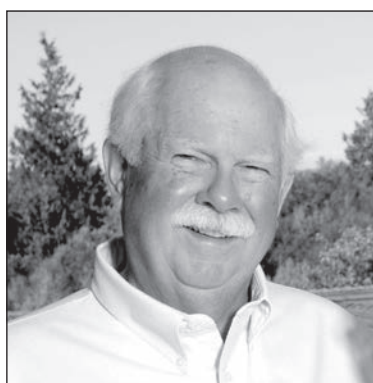
(PT humorist Bill Mann is Newsmann9@gmail.com)

What will it take to get you to volunteer?

You are a volunteer, aren't you? You get all those benefits like dealing with people. You are a volunteer ticket taker at a concert and the line gets a little long, precipitating somebody loudly complaining about having to wait too long to get in. You are helping organize some event and you contact several of your fellow volunteers requesting a quick response and you never hear back. You send information out to your volunteer colleagues and one of them has changed their email address. You get called out because they never got your email. As a volunteer for many organizations over the years I could tell you more. In fact, I know you can tell me more! Oh well, it was worth the pay.

Why do we do it? Frankly, I have found volunteering facilitates making friends. When we were younger and the kids were at home, they were the natural conduit to friendships with other adults who also had children. Moving to Port Ludlow 15 years ago, our grown children no longer helped in this endeavor and neither did the grandchildren. Consequently, we needed to find other ways to find folks who might endure our company.

As long-time members of the Porsche Club of America while in Kansas City, we found the Olympic Peninsula Region of PCA to be a welcoming group providing parties, rallies, etc. Over a cup of coffee, I solicited suggestions from then PCA member Mike Kenna in Port Townsend who took me to two meetings of his Rotary Club. However, my neighbor Harold Brunstad heard I was looking at Rotary and questioned why I would go to Port Townsend instead of joining the East Jefferson Club in Chimaquam. I have been in Rotary for 14 years now and have volunteered my time, energy, and treasure to the organization. Now, Mike is my friend and I have many friends in Port Townsend and East Jefferson from volunteering in Rotary. Oh yeah, in addition to finding friends whilst volunteering, I think these folks make a



Ned Luce
LIFE IN LUDLOW

positive contribution to our community's life.

Steve Gross and I volunteered to coordinate a community Sock Hop for seven years. We dressed up as the "Booze Brothers" and recruited locals to create their version of a 1960s hit song by dressing up and mouthing the words. Some of their offerings were outrageous! The images of Jeanne Joseph, Kathy Pappas, Susan Erickson, and others flash in front of my eyes. The money we

raised went to the local food bank.

BJ and I have volunteered on committees of one kind or another with the LMC at the Beach Club for several years. She has mostly served on the operations committee, and I have been on the finance committee. I think we can confess that the rewards for these services have not been as robust as you might hope. Yes, we have met people, well,

a few people, we enjoy but most of the time involves meetings on subjects near and dear to general manager Brian Belmont's heart. However, last week the staff at the LMC hosted a "Volunteer Appreciation" brunch for the folks who volunteer in one capacity or another in service to the LMC. Over 30 of us showed up for some bacon, egg casseroles, donuts, and more, plus some kind words from Brian! BJ and I enjoyed sitting with Joan Johnston, Adele Govert, Ron Garton, Sue Milner, Neal Wood, and Mary Jordan. So, our volunteering led us to having friends in the area as well as getting some free food! Now that's a benefit.

In you are interested in having some friends and making a difference around here, don't count on the kids anymore. They and your grandchildren may help you program your television and your watch, but you probably only see them at most every couple of weeks or even less. Find someplace you want to help out and make some friends as well as make a contribution. Unfortunately, do not count on a free meal!

Love a curmudgeon and have a great week!
ned@ptleader.com



PUBLISHED BY JEFFERSON COUNTY PUBLICATIONS, LLC

An independent company

Printed on recycled paper.

226 Adams St., Port Townsend WA
98368 Phone: (360) 385-2900
Fax: (360) 385-3422

PUBLISHER
Lloyd Mullen
lloyd@ptleader.com

INTERIM EDITOR
Anna Tallarico
editor@ptleader.com

NEWSROOM
Anna Tallarico
atallarico@ptleader.com

ADVERTISING
Cyrus Gubelman
cgubelman@ptleader.com
Amy Jordan
adjordan@ptleader.com

PRODUCTION
Meg Visger

FRONT OFFICE/LEGALS/CLASSIFIEDS
Vicki Kirn
classifieds@ptleader.com

Sandra Wakefield
subscriptions@ptleader.com

SUBSCRIPTIONS: Print edition and full website edition: \$70 per year in county; \$84 per year out of county.

FINE PRINT: Copyright © 2023; written permission required for reprint or reuse. The Leader is not responsible for advertising errors or omissions, or views expressed by advertisers. Published Wednesdays. Periodical postage paid at Port Townsend and other offices.

POSTMASTER: Send corrections to the Leader at the above address. Qualified as a legal newspaper under Washington law (USPS #438-920). Proud to be the official newspaper for Jefferson County, Port Townsend and all other local government jurisdictions.

LETTERS

Points to consider

1. I vote to save the golf course. I have been a full-time resident of Port Townsend since 1980 and a volunteer maintenance manager of the Kah Tai Prairie Preserve since the 1990s. This preserve is INSIDE of the golf course. I have witnessed firsthand how active and busy the golf course remains and the amount of work required daily to maintain the grounds. While following the Envision planning process I have gained great respect for all the discussions and passion for this land.

2. Surveys and editorials indicate the majority of citizens want to save the GEM of our city (42% central park, 33% golf course, 18% hybrid). This is not just old people but by native citizens, scientists, architects, previous mayors, previous city council members, previous city planners, previous Leader editors, business owners, attorneys, environmentalists, consultants, golfers, dog owners, and long term and newly arrived Port Townsend residents.

3. Has the city considered upgrading areas within the 72 acres of the Kah Tai Lagoon for a Central Park? This could be designed outside ongoing restoration areas. This area is non-native soil that consists of fill is degraded and would be ideal for the dog park, paved pickle ball courts, and playgrounds. The golf course historically contained expansive prairies and consists of black prairie soil.

4. Has the city investigated selling the abandoned Cherry Street building that was floated in from Victoria BC intended for low-income housing? Funds could be used to upgrade the golf course, purchase land for low-income housing, or the central park. Low-income density housing could be constructed on other vacant blocks of land in the city. It will be good to evaluate the success of Evans Vista, and at one time there were plans for low-income housing at corner of San Juan and F Street.

Dixie Llewellyn

Thank you, THING!

Thank you STG for bringing the THING to our community.

Along with our abundant local talent, it is such a gift to host this event. The programming and broad appeal, along with excellent organization for traffic and visitors is so impressive, and it is an honor to have your presence!

Elisabeth Rotchford Haight

Losing the love

When I first visited here 25 years ago, I walked down Water Street and saw so many smiling, happy faces from people who did not know me but still looked me in the eye and said, "Hello."

I felt my search for real community was over and went home to Olympia to make my plans to sell my house there and move here. My reasons for supporting keeping the golf course do not have to do with playing golf. But more to do with not messing with that beautiful space or especially those feelings of community.

Do we need more development? Must we take down more towering second growth trees and bring in more cars and pollution? We have always said we did not want to Aspenize here but it looks like we are.

We are losing our unique, loving community. Can you still feel it when you walk down Water Street?

Frances Andrews

Repair the roads instead

Let's stop all the bickering about the golf course and the pool. The real issues at hand are our roads and affordable housing. Stop throwing money away and give the money directly to a landscaper to take care of our golf course. The pool should be a future issue.

I am having trouble with the leadership of Port Townsend as it seems not enough is getting done. An example: a letter notifying local residents that the Discovery Road Project between Sheridan Street and Rainier Street was supposed to get underway May 2022. The money was allocated, they had a contractor, but nothing



"I laughed out loud when I came across The Getaway supplement in The Leader, which is the name of the album we are promoting this year," David's Lion band member Mike Davidson said. *Courtesy photo*

has been done and now it is September 2023? It is a heavily used road and it is beyond disrepair. A bike lane would be nice (as proposed) but not necessary, if wider shoulders were put in instead. Actually, this project should go beyond the Rainer Circle down to Mill Road where the road meets up with the county part of Discovery Road.

The road marker lines on Discovery are completely worn out and should, immediately, be painted. At night, it is extremely dangerous to drive with car headlights in your eyes and no white lines to follow on the right side of the lane. This is where you are supposed to look to avoid being blinded by the opposing car's headlights. When you try to keep to the right, there is nothing but a long line of patched potholes that your car's suspension has to absorb.

Another dangerous situation waiting for an accident to happen. How can we get anything done if we can't even get a project completed that is on the books? Where is all the infrastructure money that was approved by congress? Can we not get some of that to help cover the costs?

Frank Saladonis

A sad state of affairs in the funnies

At their best comic strips can be funny, idiosyncratic, and emotionally evocative, but you wouldn't know it reading The Leader.

"Amber Waves" by Dave Phipps reads like a cynical Calvin and Hobbes rip off.

"The Spats" by Jeff Pickering relies on the misogynistic trope of a husband and wife who hate each other.

"Just Like Cats and Dogs" (also by Phipps) relies on the same trope but it's funny because they're animals, right?

I think it's worth considering if this selection of comics is the

best we can do. Are these strips funny or relevant to The Leader's readership?

"Grin and Bear It" began publication in 1932. "Tiger" started running in 1965. There are many old comics that are a lot better, why choose these two? Perhaps the issue is with King Features Syndicate. A cursory look through their website reveals little worth reading.

I am by no means a curmudgeon. I simply love comics and think we can do better. The comic strip can be a medium of wit and beauty. Take Pogo, Cul-de-sac, and Nancy as examples. Newspaper comics started as a way to draw readers in, and that can still be done today. Why not use the page to feature independent comics by living cartoonists and help support a dying art form? Why take the chaff when you can have the wheat?

Lachlan Hinwood

Fire hazards

Like others who have written letters to the editor, I am concerned about fire here in Port Townsend. Lately I have been walking my dog in the morning at Kah Tai Lagoon. I love seeing the wildlife there in the early morning hours. As I walk I am also picking up empty beer cans, bottles, and plastic food containers, along with a lot of cigarette butts. I then deposit them in the trash cans at either end of the trail.

Recently, the city did a "homeless sweep" and some of the homeless moved on. After that I began to carry large bags to slowly pick up the trash left in the homeless camps. I was making good headway until one day I went back into a camp to retrieve more garbage and saw a new tent with people there, so that put an end to that.

About a week later, I spotted a lot of garbage in another area back off the trail and went in to

pick it up, only to be startled by someone moving on the ground in a sleeping bag. I have since stopped trying to clean up the camps.

What I noticed while doing my pickups were fire pits and pieces of burned paper scattered around the camp sites. Seeing this was more than disturbing. I am concerned that just one burning cigarette butt or an ember from one of those campfires, along with the winds we get here, could start a brush fire.

I spoke to a city employee who said that when they clear people out, they just come back. She seemed to think the problem was unsolvable. I hope that's not true, though I don't know what the solution is either, other than to remove the people and their stuff from the camps so often that they give up. I know this would cost money. However, imagine what it would cost if we had a runaway fire. If we had a wind-driven fire here, like happened in Paradise or Lahaina, evacuating Port Townsend would be a nightmare.

Lynda Powell

Correction and Apology

In last week's ad titled "We Support Port Townsend's public golf course. Let's continue to talk," Julia Danskin's name was included among those listed. She has since informed us that having her name on this ad was unintended and has asked that we remove it. We sincerely apologize for our misunderstanding. Going forward, should we make any further public listings of our supporters, we will re-confirm with each person before it is published.

Barb Matter of the Players Club and Supporters of Port Townsend Golf Course

Enough is enough

We can no longer be held hostage to the 150-year-old massive city platting map that was drawn up by dreamy 19th-century speculators. See it on the wall at city hall. Times have changed. Planetary critical needs are each day more apparent. We must be smarter with inevitable development here in PT.

Other cities (Vashon, Bainbridge, Europe) have much more sensible building and development codes and laws.

An end must come to allowing the city to greenlight (aka turning a blind eye) to massive and insensitive tree removal. People or large developers buying treed lots and then clearing them corner to corner is abundantly incorrect.

Example: North Beach's forest is quickly disappearing as way too many mature large trees are quickly cut down and the lots scraped clean of native ferns, salal, snowberry, currant, and ironwood. Bye bye birds. Cut first ask later is frequently practiced. After the lot is leveled a big house is built and too often non native plant species are brought in to make it pretty.

Or, please, look at the big new extensive plateau of tract homes built at the top of Cook Avenue. Cookie cutter lawns and sidewalks, zero legacy forest and large distasteful caged-in water traps attempting to do the job formerly done by the trees and plants.

None of this needs to be. Development and design standards can be much more environmentally friendly and enforced — as they are in other, more thoughtful, cities elsewhere.

Good arterial roads with fewer and smaller neighborhood roads is a 21st-century strategy. Not needed are boulevard-sized streets accessing dead-end tract deserts. Dedicated foot and bicycle trails, not temporary ones as most here are now, are part of a sustainable future. Loosening up on zoning restrictions allowing homeowners more options to create living spaces on their existing property such as rental rooms or ADUs is also needed — despite recent small improvements. Destroying more trees and habitat to accommodate more people on the over-extended and fragile infrastructure we have here in PT is not sensible. Sea walls are another highly under regulated and abused local standard. That's a different letter.

City council, please do your homework and address these problems. Let's drive this change rather than be crushed by it.

Bill Dentzel

Getaway twins

As a summer storm passes over, the thunder complains, but the the sky to the west brightens. Unusually bound to almost-indoors, Jennifer and I were reflecting on what a great year we had in Port Townsend and the surrounding areas.

We are grateful to have the Osprey, our touring coach, over in Cape George for so many weeks this year. We had so much fun playing out on the street, busking, playing open mics at the Uptown, and playing for great groovy folk at Discovery Bay Brewing, and rocking out our loud stuff at the Anchor on Water Street (kitchen open late, the fierce competition in my head between the Smash Burger or the Anchor Burger) and for the various private parties here in Jefferson County. We happily called it home between adventures and performances around the Puget Sound.

I laughed out loud when I came across the Getaway supplement in The Leader, which is the name of the album we are promoting this year. We are proud of the record, and happy to have the PT area in our places to Getaway to and to recommend to our tribe. The common name built the connection in our hearts even more.

We will be heading out in just a few short weeks to Astoria for a week and then we will chase the sun down the coast to Ventura, San Diego, Coachella Valley for November, and over to Hawaii and back to the Puget Sound area in June of 2024.

We sincerely thank everyone who has been so encouraging and supportive to us this year.

Please contact us on any platform, all of which can be found including links to the Getaway LP by David's Lion at www.Linktr.ee/Davidslionband

Leader CLASSIFIEDS

Get The Job Done.

PHOTOS: \$5 per week
LOGO: \$5 per week
BORDER: \$3 per week
HEADLINE: \$3 per week

All ads appear on ptleader.com the week of publication

DEADLINE: 12 NOON on Mondays. Early deadlines apply for Monday holidays/closures. Deadlines move back one business day. Closed most major holidays.

CORRECTIONS: Accuracy is important to us, so please take time when formulating your ads. Phone numbers, addresses, price omissions, or missed deadlines are not the responsibility of the paper. Please read your ad carefully and report any errors promptly.

LATE SUBMISSIONS: Ads accepted after the noon deadline will be accepted only until 1 p.m., after which you ad will not be accepted. **Late Ads** will incur a late fee.

CANCELLATIONS: Are subject to the same deadline as ad submissions.

The Leader is not responsible for claims made by classified advertisers.
The content of any advertisement is the sole responsibility of the advertiser.

CALL: 360 385-2900 EMAIL: CLASSIFIEDS@PTLEADER.COM ACCESS: WWW.PTLEADER.COM
226 ADAMS STREET, PORT TOWNSEND, WA 98368. BUSINESS HOURS: MONDAY-FRIDAY 9 A.M. TO 5 P.M.

BILLBOARDS

CLASSES, WORKSHOPS, LECTURES & EVENTS

FRIENDS OF FORT WORDEN STATE PARK

Bingo Night at Hilltop Tavern Friends of Fort Worden Benefit!
Wednesday, Sept 6 at 7:00 pm

- A dollar a game! Great pub food! Cheap beer and wine! World-famous baked potatoes with all the fixin's!
- It's fun, prizes for the winners, and the thrill of victory for you and the Friends!

*\$1 per round or \$10 to play all 10 rounds.

All proceeds go to the Friends of Fort Worden, so invite YOUR friends and neighbors.

Hilltop Tavern, Port Townsend's favorite watering hole, 2510 W Sims Way. Lots of parking, Discovery Pass not needed! See you on Sept 6.
205613 8/30,9/6

RATES • \$25 for up to 75 words, \$0.25 for each additional word.

SUBMIT • Call us at 360-385-2900, email billboards@ptleader.com or visit the Leader office, 226 Adams St. Deadline: 5pm Thursday.

Apartments & Condos

"Come & knock on our door...
...We've been waiting for you!"

Looking for:

- Management?
- A rental?
- A tenant?

Welcoming new properties and tenants

Townsend Bay Property Management

360-385-3896 townsendbay.net

independence. Master's Degree in behavioral or health sciences & 1 yr. paid social service experience or BA in similar fields and 2 yrs. paid social service experience; or BA and 4 yrs. paid social service experience. Requires current WDL & insured vehicle. Open until filled, candidates encouraged to apply promptly. For job description, application, full benefit information & salary chart, visit www.O3A.org/Employment or call (360) 207-0966. O3A is an EEOE.
205620 8/30,9/6

Come join the KITSAP BANK Family. Now hiring for a **Financial Service Specialist Float** at our Port Townsend Branch. Pay range for this position is \$17.53 - \$32.04. This position may be eligible for quarterly incentive pay and an annual bonus, depending on business factors and if the employee meets eligibility criteria. Paid time off includes 10 vacation days (pro-rated your first year), 11 Holidays, and 2 personal days. Employees also receive sick time, one sick day accrued per month. For full list of benefits, job description, and link to apply visit <https://www.kitsapbank.com/about-us/careers/>. Kitsap Bank is an Equal Opportunity Employer.
205695 9/6-9/27



WANTED: FULL-TIME LEAD MAINTENANCE TECHNICIAN

Our organization is seeking an experienced lead maintenance technician with exceptional communication skills. Hourly wage range \$24-\$26 per hour, DOE, includes benefits. Candidate must be fit; able to lift up to 50 pounds, able to stand, bend, squat, climb ladders, lift & work off elevated surfaces at times. Must have valid driver's license and excellent driving record. Our company offers on-the-job training, continuing education & opportunities for advancement. Please email resume to: felice@kalapoint.org
205585 8/23-9/13

FRONT DESK CLERK at the Tides Inn Hotel, Port Townsend. Part-time full-time. Experience strongly preferred, but will train. Competitive wage. Hiring bonus & benefits opportunity. Enquire in person at The Tides Inn Hotel, 1807 Water Street, or apply at thevictusgroup.com.
205625 8/30-10/11

JCIRA MULTICULTURAL CENTER ADMINISTRATOR

Jefferson County Immigrant Rights Advocates

(JCIRA) is hiring a part-time Spanish-English bilingual person to: Provide a welcoming presence at the Center Assist the Outreach Coordinator in planning events and activities Maintain records and calendar Recruit and train volunteers

Required - miscellaneous office and computer skills, comfort with social media, your own transportation. 15 hours per week. \$25 per hour with paid vacation, holidays, sick leave. Go to jcira.org and click WERE HIRING for application and detailed job description.
205687 9/6-13

Jefferson County Conservation Futures Fund Program Citizen Oversight Committee Vacancies

One District 2 Seat
One District 3 Seat
One Open Interest Seat

The Conservation Futures Fund Citizen Oversight Committee members make recommendations to the Board of County Commissioners on the selection and funding of open space projects utilizing the Conservation Futures Fund. The Board of County Commissioners seeks representation on the committee from each commissioner district and a broad spectrum of interests. There is currently one vacancy for a citizen to represent District 2, one vacancy for a citizen to represent District 3, and one vacancy for a citizen to represent an "interest". The committee meets approximately five times per year with the majority of activities occurring in April and May. Interested individuals should send a letter or email to the program coordinator, 615 Sheridan St., Port Townsend, WA 98368 (email: tpokorny@co.jefferson.wa.us) to arrive no later than **Friday, September 22, 2023** to request an application. These are non-paid positions. For more information, contact program coordinator Tami Pokorny, Jefferson County Environmental Public Health at Ph: (360) 379-4498, email tpokorny@co.jefferson.wa.us or visit <https://www.co.jefferson.wa.us/560/Conservation-Futures-Program>.
205694 9/6

CHECK ADS FOR ERRORS THE FIRST WEEK

THE PORT TOWNSEND LEADER will not be responsible for errors made by Leader staff after the first week of publication for any advertisement. Notice of errors in the first publication should immediately be called in to the attention of the Classified Department for correction.

Deadline for Corrections: 12 p.m., Monday Unless otherwise specified due to Holiday Early Deadlines.
360-385-2900

Sweet beach cottage at North Beach. Charming and private, 1 bed, 1 bath, fireplace, beautiful backyard, off-street parking. Available Oct 15 - Apr 15. Pets negotiable. \$2250/month including utilities, first, last and \$1000 security deposit. 206-227-4555 or 206-383-7228
205540 8/30

Electronics



Long arm quilting machine. Gammill Vision 22-10. 12ft table. Includes stitch regulator, pantographs, bobbin winder, and more. Personal machine - never used commercially. Located in Port Ludlow. Purchaser is responsible for take down and transportation. \$6,000 cash. 303-981-3698
205693 9/6

Sale Specials

BAMBOO, clumping, DOES NOT SPREAD in 5-gallon pots. \$10/plant. Port Townsend. Saturday, Sept 9, 10am-2pm. Leonard 360-774-2006
205683 9/6

Notices

WEED-REMOVAL. Professional service needed. Quiet, stealth, magical. Asian-inspired garden in high-traffic area. **Leave experience details** on vm at 344-8300.
205661 8/30

Lawn & Garden

LEAVITT TRUCKING

Call us for your landscape products. Leavitt Trucking & Excavating. (360) 385-4200. 13584 Airport Cut-off Rd., Port Townsend. Contractor registration #LEAVIT1150NK.
190531

ACI BOATS

ACI BOATS is looking for experienced **Aluminum Welders and Fabricators** to join our team. We offer a competitive compensation package with expectational benefits including top pay, flex schedule with every other Friday off, medical, dental and vision coverage, PTO and holidays. Please submit your resume for consideration to jobs@aciboats.com or stop by for a tour and application.
205526 8/16-9/6

Activity Bus Driver

Avamere Port Townsend!

Part-time, day shift, Wed-Fri. \$18/hr starting + ferry passes/gas or mileage fees covered. Avamere at Port Townsend - 1201 Hancock Street, Port Townsend. To apply, please reach out to Recruiting@areteliving.com or krobbins@areteliving.com
205574 8/23-9/13

ALL CITY TOWING

Part or full-time tow truck driver wanted in Port Townsend/Quilcene area. Experience preferred, but will train. **No CDL required.** Wage depends on experience, employment includes many benefits. Must be at least 23 years of age with good driving record. Stop by or call All City Autobody & Towing at (360)385-0634 & ask for Jan.
205011 8/16-9/6

CASE MANAGER

for Olympic Area Agency on Aging (O3A). 1 position available based in Port Townsend; serves clients in Jefferson County with a portion of the caseload in East Clallam County, 40 hrs./wk. Non-Exempt. \$28.96 starting wage if hired at Step 1. Maximum pay at end of range Step 12 is \$37.99/hr. Benefits included: 12 paid holidays per year, paid annual and sick leave accrual, WA PERS pension plan, medical plan including vision, dental plan, EAP counseling, life and AD&D insurance. Provides case management for in-home care to seniors and adults with disabilities including assessment of care needs, creating service plans, coordinating care providers; focusing on client

CONSTRUCTION LABORER

Great pay, full or part-time. Call Jason (360)643-3344.
205629 8/30-9/20



Director of Finance and Administration

We are seeking a qualified candidate to work as the Port's chief financial officer and Port Auditor, and, under the Executive Director, will manage and supervise the Port's accounting, finance, internal control, investment, financial planning, budget, annual report, information systems, risk management, human resources, and labor relations functions. See the position profile, job description and application requirements at www.portoftpt.com. This is a full-time salaried position of \$135,000 to \$150,000 (DOE/DOQ). Benefits include medical, dental, vision, life, disability, retirement, vacation, sick leave, and 13 paid holidays/year. Equal Opportunity Employer. Applicants are encouraged to apply by September 29, 2023.
205712 9/6-9/20

ELECTRONICS ASSEMBLER

Established Port Ludlow company seeks Electronics Assembler. Experience with surface-mount and through-hole components, detail-oriented work ethic and good communication skills required. Training provided. Salary DOE. Full job description at <https://www.shinemicro.com/employment/> E-mail resumes to jobs@shinemicro.com
205268 7/19

Fleet Services/ER&R Manager

Jefferson County Central Services is seeking a motivated individual with excellent communication and interpersonal skills to serve as the Fleet Services/ER&R Manager responsible for the overall management of the Fleet Services Division and the Equipment Rental and Revolving (ER&R) Fund. Located in Chimaquam, the Fleet Services Manager is tasked with the purchase, maintenance, repair management and remarketing of fleet vehicles, trailers and equipment; the purchase of materials and supplies required by the Roads Division including aggregates and surface-mine administration; and manage 5 shop facilities which includes the repair, maintenance and upgrade of fuel sites, underground storage tanks and wash systems.

Education/Experience: Bachelor's degree (BA) in industrial arts, mechanical technologies or a closely related field from a four-year college or university and three (3) years experience in relevant, progressively responsible Public Works or Fleet Management positions, including one (1) year of supervisory or lead experience; or equivalent combination of education/experience.

Compensation: This is an Exempt, Grade 18 position with a salary range of \$6192.50-\$8079.82/month. Placement depends on level of experience and qualifications. Full medical benefits including dental and vision. Retirement provided through Washington State DRS. Plus 21 days of PTO (accumulated based on hours worked), 12 paid holidays and bereavement leave.

To apply, see full job description and complete the online application at the Employment link on the Jefferson County Website at: <https://www.co.jefferson.wa.us/jobs.aspx> Include a resume, cover letter and 3 professional references. Position will be open until filled with the first application review on September 14, 2023. EOE
205657 8/30,9/6

Home/Duplex Rentals

Farm House for Rent in Port Townsend \$2,250 per month. 2 bedroom 2 bath; freshly updated; stainless appliances, granite counter tops, wood stove. 1200 square feet. Off street parking, no garage, quiet neighborhood, close to hospital. One bedroom has carpet, one bedroom has oak flooring. Available September 1st; First, Last & Deposit; background check. Call to discuss (360)390-8452.
205492 9/6

Home Decor

SHUTTERS, BLINDS, SHADES, ETC. Prices lower than warehouse & club stores! Dare to compare our prices & you'll see we don't have any competition. Fox's Draperies: (360)379-2548 or (916)743-6837. Over 40 years experience.
198243

ADUs/Cottages/Studios

Available now. Newly remodeled and enlarged **675 sq ft STUDIO** in lower level of our home on Adelmaa Beach. 2-piece bathroom with new commode and shower surround, butcher block counter with new sink and 2-burner induction cooktop (magnetic cookware provided), W&D, recessed lighting, ample storage. French doors open onto ground level entrance with sitting area. One off-site parking spot. Wi-Fi, electricity, trash, and recycling included. Space to garden. Pet negotiable. \$1600 first month plus \$1600 security deposit. 360-316-9459
205669 8/30,9/6

Help Wanted

caregivers HOME CARE TEAM
We Root Angels By The Hour

\$300 SIGN-ON BONUS. Caregivers Home Health. Set your own hours. Competitive wages & benefits, no experience, paid training. (360)379-6659.
165494



Clip Out Section

Garage & Yard Sales

GARAGE SALE! Sept. 8&9 Tools, boat stuff, kayak, doors, pizza oven, commercial mixer, household, clothes, and more. Friday and Saturday, 9:00 to 2:00. 1282 Center St. PT.
205703 9/6

Moving Sales

Moving Sale. 740 N Bay Way, Port Ludlow. One day only. Saturday Sept. 9, 8:00am to 2:00pm. Tools, toys, bikes, crafts, quilting & other fabric, kayaks, and more.
205685 9/6

ASTROLOGY

ARIES - Mar 21/Apr 20

Get outside and enjoy as much fresh air and exercise as possible this week, Aries. A weekly outdoors excursion can recharge the batteries and provide some time to reflect.

TAURUS - Apr 21/May 21

Taurus, it's not possible to have everyone like you all of the time. Emotionally it can be difficult to accept that not everyone agrees with your point of view. Be who you are.

GEMINI - May 22/June 21

Someone from your past might come back into your life, Gemini. Keep a lookout for someone who seems familiar, as it can be a way to reminisce for a bit.

CANCER - June 22/July 22

Cancer, start conversations with all of the people you meet so you can learn about different backgrounds or cultures. You might learn something you didn't know or try a new food.

LEO - July 23/Aug 23

Leo, try to work the room when you are thrust into a social situation. You need to be a diplomat or politician if you want to be in good standing with as many people as possible. Put your best face forward.

VIRGO - Aug 24/Sept 22

You know who you can trust, Virgo. Stay close to those people for the time being. Some difficulties with family members will arise and you may need to pick sides.

LIBRA - Sept 23/Oct 23

Libra, after a whirlwind adventure, you may be glad to be back home. Vacations are nice and relaxing, but soon enough you may crave the familiarity of your own space.

SCORPIO - Oct 24/Nov 22

Scorpio, you a calm energy around you this week. You can rest assured that the people you are dealing with have everything handled. They take care of business.

SAGITTARIUS - Nov 23/Dec 21

There is a great opportunity knocking at your door, Sagittarius, so why not seize it? New things can be scary, but you have to dive in right now.

CAPRICORN - Dec 22/Jan 20

Take stock of where you want to go in the future and start putting those plans together, Capricorn. You don't have to figure everything out, but try to map out a rough outline.

AQUARIUS - Jan 21/Feb 18

You can quickly see when someone is putting on an act, Aquarius. They may say one thing but mean another. This duplicity can be off-putting, but try to get along with others right now.

PISCES - Feb 19/Mar 20

Pisces, you are in no danger of not being popular right now, so continue to enjoy all of the invitations you receive. You also can be proactive and throw your own party for friends.

FAMOUS BIRTHDAYS

SEPTEMBER 3 Kaia Gerber, Model (22)
SEPTEMBER 4 Beyoncé, Singer (42)
SEPTEMBER 5 Kat Graham, Actress (34)
SEPTEMBER Adam Sandler, Actor (57)

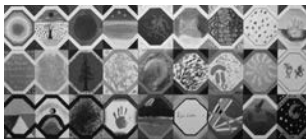
SEPTEMBER 6 Idris Elba, Actor (51)
SEPTEMBER 7 Kevin Love, Athlete (35)
SEPTEMBER 8 Pink, Singer (44)

Jefferson County Public Health Environmental Health Technician. Provides technical support for all EPH programs, assists in review of plans and/or permits, creates and maintains files, and responds to customers and inquiries. UFCW, Grade 25, 40hrs/wk with benefits. Starting pay typically \$22.60/hr. Full hourly range \$22.60-\$28.23, DOE. This position is approved for a 3% salary increase on January 1, 2024. To submit application, resume and letter of interest and to see full job description go to www.co.jefferson.wa.us/Job.aspx Open until filled, first review September 18, 2023. ADA/EOE

205561 8/30,9/6



Jefferson Farmland Trust is hiring a **COMMUNITY FOREST MANAGER** for the Chimacum Ridge Community Forest. FT with benefits, M-F, included on-site housing available! <https://saveland.org/our-story/jobs/> 205563 8/23-9/6



JEFFERSON TEEN CENTER. a non-profit after school program for teenagers is hiring for the school year. Located on the Chimacum HS campus. For more information go to www.jeffersonteencenter.org 205713 9/3,9/13

Health & Beauty

Home Care

PRIMARY CARE/ MASSAGE

Howard Welsh, ARNP, LMP, Gerontologist

- Board Certified
- University of WA & PT School of Massage Graduate
- 40 Years of Experience Caring for Seniors

Now accepting new patients for care at home on the Quimper Peninsula

206.390.9125

hwelsh@msn.com / NPI 1811299696

Mental Health

In-person Psychotherapy in Port Townsend

Pat Stapleton, PA

- 40+ yrs experience depression • parenting skills • aging • loss
- 360-316-6223

MENTE TRANQUILLA

Beaupo Mental Healthcare

Psychiatric Diagnosis, Medication, and Treatment (adults)

Most insurance accepted, incl. Medicare/Medicaid

April J. Matzenbacher
RN, MSN, P-MHNP-BC

360-889-9331

mentetranquillallc.com

Physicians

Difficulty Managing Stress?

Myers Cocktail

Vitamin & Mineral IV for Fatigue & Adrenal Exhaustion
Infection & Inflammation



Dr. Jonathan Collin, MD

drjonathancollin.com

townsendletter.com

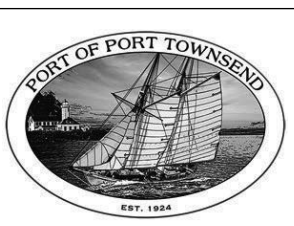
360-385-4555

Call **360-385-2900** to join this group

The Kala Point Owners' Association is now accepting applications for a full time **Maintenance Technician.** Must be a self-starter, team player, safety oriented and able to operate small/large maintenance equipment. Valid driver's license. \$20-\$22 hour DOE, includes benefits. Please submit your resume to: felice@kalapoint.org 205601 8/23-9/13

The PT Senior Association is accepting applications for a **part-time JANITOR.** Approx. 11 hours/week. Flexible hours. \$17/hr. Send resume/application to PTSA PO Box 359, Port Townsend, WA 98368 or take to PT Community Center - 620 Tyler St. Applications available in lobby. Contact 360-385-9007 or ptsa777@gmail.com 205645 8/30-9/6

The PT Senior Association is accepting applications for a **part-time Office Manager.** 16 hours/week Mon - Thu 9am - 1pm. \$18/hr. Send resume/application to PTSA PO Box 359, Port Townsend, WA 98368 or take to PT Community Center - 620 Tyler St. Application forms available in lobby. Contact 360-385-9007 or ptsa777@gmail.com 205648 8/30,9/6



Yard Laborer

We are seeking a qualified candidate to work with the Boat Yard team. See application at www.portoft.com. This full-time, represented position with benefits has a starting pay range of \$23.59-\$25.03 per hour (DOE/DOQ), full grade pay range goes up to \$31.71 with opportunities for promotion. Benefits include medical, dental, vision, life, disability, retirement, 2 weeks/year paid vacation, 96 hours/year sick leave, and 13 paid holidays/year (including 2 personal holidays available after one year employment). Equal Opportunity Employer. Open until filled. 205711 9/6-9/20

Youth & Community Engagement Coordinator Full-time with benefits in Port Townsend. Support Jefferson and Clallam County Anchor Community Initiative (ACI) in achieving baseline levels of youth and equitable community engagement. Youth and Community Engagement Coordinator (YCEC) will dedicate part of their time to youth and young adult engagement, and part of their time to outreaching to By/For agencies, specifically LGBTQIA2+ and BIPOC organizations working towards ending youth homelessness. In addition, they will support the youth outreach team through a combination of social media and community outreach. Application and job description available on employment page at www.olycap.org. EOE 205652 8/30,9/6

Youth Services Case Manager Full-time with benefits in Port Townsend. Our creative team of social service providers is looking for a Youth Services case worker to offer housing support to a caseload of youth and young adults (12-24 years old) experiencing homelessness or housing instability. This position will also advocate for young people within the community 205652 8/30,9/6

and internally to ensure needs are being recognized, represented, and addressed. Application and job description available on employment page at www.olycap.org. EOE. 205650 8/30,9/6

Services

BUILDER/HANDYMAN Large & small home repairs & improvements done on hourly rate or estimate. Reasonable prices with 33 years of local experience. Licensed, bonded & insured. Call Jeff: (360)643-3283. #JEFFGGC881BU. 205557

GREEN MONSTER SERVICES Yard service, odd jobs, rototilling, property clean up, hauling, moving, brush removal, hedge trimming, roof & gutter cleaning, tree pruning. Residential/Commercial. Serving Jefferson/Clallam Counties. Now taking new contracts. We meet or beat any licensed competitors! (360)582-0384. 191718

MOVING EARTH LLC Underground utility install, sewer repairs, excavation & grading, landscaping services and more! 360-385-4415 www.movingearthllc.com

PHILLIPS PAINTING Interior, exterior & pressure washing. Call for free estimate. (360)732-0069. PHILLP066KD. 205302

PORT CITY TREE CARE •Tree Reduction and Removal •Property Clean-up •View Enhancement and More! (360)824-2403 LIC# PORTCCT773CW 204959

Quality Landscapes Lawn care, pruning, maintenance & renovation; weeds, bugs & blights spray service; irrigation, hydro-seeding & garden coaching. (360) 385-6663. Email for info at: qualitylandscapes@cablespeed.com #QUALIL123DG 193415

RODEGHIER MASONRY Brick, Block, Stone, Chimney Repair, Pavers, Timeless Craftmanship, Enduring Quality. Call: (831)461-4729 204043

SOARING LION STONE MASONRY Stonework. Hardscape, Brick, Block, Chimney Repair, Fireplace, Daniel Griffin. Over twenty-five years of experience. Chimacum, WA. Call: (360) 301-0014. Email: stonegriffin@gmail.com. Visit: www.soaringlionstone.com LIC#SOARILS816LQ 192381

NO MOLES
360-344-2118

Statewides

ADVERTISE STATEWIDE with a \$325 classified listing or \$1,600 for a display ad. Call this newspaper or 360-344-2938 for details. 193176

DONATE YOUR CAR TO CHARITY. Receive maximum value of write off for your taxes. Running or not! All conditions accepted. Free pickup. Call for details, 855-635-4229. 190483

ELIMINATE GUTTER CLEANING FOREVER! LeafFilter, the most advanced debris-blocking gutter protection. Schedule a **FREE** LeafFilter estimate today. 20% off Entire Purchase. 10% Senior & Military Discounts. Call 1-888-360-1582 191024

PREPARE FOR POWER OUTAGES today with a GENERAC home standby generator. \$0 money down + low monthly payment options. Request a FREE Quote. Call now before the next power outage: 1-888-674-7053. 199540

City Notices

CITY OF PORT TOWNSEND Invitation to Bid 100 Cherry St Demolition

The City of Port Townsend is requesting bids for the demolition and disposal of an approximately 5,337 gross square foot, 3-story stucco building with an approximately 1,855 sq ft footprint located at 100 Cherry Street. Sealed Bids will be received by the City of Port Townsend, 250 Madison St., Suite 1, Port Townsend, WA 98368 until September 21, 2023 at 3:00 p.m. The City of Port Townsend reserves the right to reject any and all Bids and to waive minor informalities or irregularities in the Bidding.

A copy of the Bid Documents may be obtained from the City of Port Townsend website at cityofpt.us/rfps. Inquiries regarding this project should be directed to Steve King, Public Works Director sking@cityofpt.us.

Non-Discrimination. No bidders will be discriminated against on the grounds of sex, race, color, age, national origin, sexual orientation, gender identity, religion, or disability in consideration of an award of any contract or subcontract. All bidders are directed to solicit and consider minority and women-owned businesses as potential subcontractors and material suppliers for this project. John Mauro, City Manager City of Port Townsend, WA 205654 8/30,9/6

NOTICE OF PUBLIC HEARING

The Port Townsend City Council will conduct a public hearing on Monday, September 18, 2023 at or about 6:00 p.m. in Council Chambers, 540 Water Street, Port Townsend, WA, to consider amendments to the Port Townsend Comprehensive Plan Chapter 2 – Port Townsend Gateway Development Plan and Port Townsend Municipal Code Chapter 12.04. Transportation and Rights-of-Way Improvement Standards

Persons wishing to testify may do so either by submitting verbal testimony during the public hearing by joining in person via computer or tablet at <http://joinwebinar.com> (enter the 9 digit Webinar ID 242-937-955) or submitting written comments to the City Clerk, City of Port Townsend, 250 Madison Street, Suite 2, Port Townsend, WA 98368. Written comments on the merits of the amendments must be received by 4:30 p.m. on September 18, 2023. Submit public comment emails to be included in the written record to: publiccomment@cityofpt.us.

Public Accommodations for this meeting:

- The public may attend in person or virtually via computer or tablet at <http://joinwebinar.com> enter the 9 digit Webinar ID 242-937-955
- Phone only (muted listen-only mode) United States: Local Dial In – (360) 390-5064 access code: 706-376-505#
- Live stream (listen only): <https://cityofpt.us/citycouncil/page/agendasminutesvideos>.
- Submit public comment emails to be included in the meeting record to: publiccomment@cityofpt.us

Proposal: Comprehensive Plan Amendment Arising from Clarification and Refinement of the Sims Gateway Development Plan—City of Port Townsend initiated amendments to the Comprehensive Plan and Port Townsend Municipal Code section 12.04. Transportation and Rights-of-Way Improvement Standards. Proposed amendments would:

Amend the Gateway Development Plan and associated references in the Comprehensive Plan to clarify development goals and policies for the Flats District as identified in the Gateway Development Plan. Amend Figure 4-2: Port Townsend Subareas to reference the Gateway Development Plan as amended in 2023 instead of as adopted in 1993. **File Reference: LUP23-034**

The complete application and related materials are on file with the City of Port Townsend which can be obtained from 250 Madison Street, Port Townsend, WA, 98368. The information is also available online at <https://cityofpt.us/planning-community-development/page/sims-gateway-comprehensive-plan-amendment-lup23-034>

Location: The proposed code amendments will apply to the section of Sims Way / State Route 20 and the associated right-of-way running between the southern city limits and the state ferry terminal on Water Street. 205709 9/6,9/13

AVAMERE at Port Townsend

YOUR RETIREMENT ENHANCED

Do more of what you love!

Independent Living Assisted Living

Proudly serving Port Townsend for 16 years

AvamereAtPortTownsend.com

Schedule your personal tour!
(360) 379-9376

GET THE JOB DONE WITH LEADER DIRECTORIES

CLOG-FREE GUTTERS FOREVER

EXCLUSIVE LIMITED TIME OFFER!

15% OFF + 10% OFF + 0% OFF

CALL US TODAY FOR A FREE ESTIMATE
1-888-360-1582

Mon-Thurs: 8am-11pm, Fri-Sat: 8am-5pm, Sun: 2pm-8pm EST

FREE GUTTER ALIGNMENT + FREE GUTTER CLEANING*

*Wells Fargo Home Projects credit card is issued by Wells Fargo Bank, N.A., an Equal Housing Lender. Special terms for 24 mo. apply to qualifying purchases of \$1,500 or more with approved credit. Minimum monthly payments will post off balance before end of promotional period. APR for new purchases is 26.99%. Effective: 01/01/2023 - subject to change. Call 1-800-431-5921 for complete details. The leading consumer reporting agency conducted a 16 month outdoor test of gutter guards in 2010 and reported LeafFilter as the #1 rated professionally installed gutter guard system in America. *For those who qualify. One coupon per household. No obligation estimate valid for 1 year. Offer valid at time of estimate only. See Representative for full warranty details. Manufactured in Flannegh, Michigan and processed at LeafFilter Group in Ohio. All #036692022, CA #1030795, CT #MC-064905, FL #CFC05678, HI #C127230, IL #RCE-51604, LA #509544, MA #176447, MD #MHIC48323, MI #210221286, #22000022, #22000043, #210621286, MN #R731804, MT #C28392, ND #C28392, NE #50115-22, NJ #1390995360, NH #688893, NY #R080969, OR #R080969, RI #R080969, SC #R080969, TN #R080969, TX #R080969, VA #R080969, WA #R080969, WI #R080969, WY #R080969.

FREE INTERNET
Qualify today for the Government Free Internet Program

YOU QUALIFY for Free Internet if you receive Housing Assistance, Medicaid, SNAP, WIC, Veterans Pension, Survivor Benefits, Lifeline and Tribal.

Bonus offer: 4G Android Tablet with one time co-pay of \$20

CALL TODAY (866) 788-1147

maxsijp
CONNECTS

ACP program details can be found at www.fcc.gov/affordable-connectivity-program-consumer-faq

Super Crossword

Answers

P	A	S	T	O	R	A	L	S	E	C	E	D	E	L	O	A	F	S	
O	N	P	A	R	O	L	E	I	S	O	M	I	L	O	M	N	I	A	
W	O	R	K	A	T	I	T	D	O	R	I	S	L	E	S	S	I	N	G
E	D	I	E	G	L	U	E	I	R	K	I	N	G	M	A	G			
R	E	G	I	S	P	H	I	L	B	I	N	S	E	D	A	T	E	L	Y
		H	O	T	E	L	N	T	H	U	T	A							
M	A	R	T	Y	R	S	M	I	C	H	E	L	L	E	O	B	A	M	A
I	C	A	N	N	A	D	A	W	E	E	D	S	S	A	P				
F	A	I	T	H	E	V	A	N	S	B	I	A	S	T	I	R	E		
F	I	N	E	R	I	N	B	A	N	S	T	J	M	A	X	X			
	S	O	L	O	M	O	N	G	U	G	G	E	N	H	E	I	M		
P	E	T	A	L	S	T	E	A	M	O	P	E	D	I	M	A			
A	S	O	F	S	E	X	Y	L	A	U	R	A	I	N	N	E	S		
C	A	R	S	T	A	C	I	S	E	N	T	B	O	T	H				
T	I	M	O	T	H	Y	H	U	T	T	O	N	B	E	T	A	R	A	Y
		D	I	R	M	A	L	U	S	A	G	E							
K	A	T	E	M	O	S	D	O	N	A	L	D	G	L	O	V	E	R	
A	R	B	U	N	L	O	O	P	E	L	O	N	R	E	L	O			
P	E	O	P	L	E	O	F	N	O	T	E	P	A	R	O	D	I	E	D
P	A	L	A	U	T	I	T	L	E	D	E	M	I	N	E	N	C	E	
A	L	T	O	S	H	A	V	E	N	S	D	E	F	E	R	S	T	O	

Weekly SUDOKU

Answer

9	4	5	1	6	8	3	2	7
1	2	7	3	5	9	4	8	6
3	8	6	4	2	7	1	9	5
2	9	1	6	7	3	8	5	4
7	6	8	5	4	2	9	1	3
4	5	3	8	9	1	7	6	2
8	7	2	9	3	6	5	4	1
6	1	4	7	8	5	2	3	9
5	3	9	2	1	4	6	7	8

County Notices



Call for Proposals

The Housing Fund Board is accepting proposals from organizations for Affordable and Supportive Housing and Homeless Housing and Assistance funds to be provided during calendar year 2024 and paid for from the County's 1590 and 5386 Funds.

Packets for the 2024 1590 and 5386 RFP's are available online at: www.co.jefferson.wa.us - Services - Laserfiche Web Portal - Board of Commissioners - Boards & Committees - Housing Fund Board - RFP 1590/5386

Or request a copy by contacting 360-385-9100 or County Administrator, P.O. Box 1220, 1820 Jefferson Street, Port Townsend, WA 98368.

Proposal Deadline: On or before 4:00 p.m. September 29, 2023 by 4:00 p.m. (received in digital form to carolyn@co.jefferson.wa.us, if you need assistance call 360-385-9122)

205653 8/30,9/6

JEFFERSON COUNTY PUBLIC NOTICE OF EXTENSION OF WRITTEN COMMENTS ON THE TYPE III LAND USE APPLICATION FOR 50 BED EMERGENCY SHELTER AND 40-SPACE TINY SHELTER PARK

APPLICANT:

Olympic Community Action Programs (OlyCAP)
Application Received Date: October 28, 2022

Application Complete Date: August 4, 2023
Application Notice Date: August 9, 2023
300 Foot Radius Mailing Date: August 9 & 31, 2023

SITE ADDRESS AND PROJECT LOCATION:

142 Mill Road, Port Townsend, WA 98368. Parcel 001162001; Section 16, T.30, R.01 West, WM.

Interested parties have until September 12, 2023 to submit written comments to the Jefferson County Department of Community Development, 621 Sheridan Street, Port Townsend, WA 98368 regarding Conditional Use Permit Application No. ZON2022-00152 (Type III CUP Application for the Caswell-Brown Village Emergency Shelter with Permanent Supportive Housing and the Permanently Sited 40-SPACE Tiny Shelter Park)

PROJECT DESCRIPTION AND REQUIRED PERMITS/STUDIES:

New 50-bed emergency shelter and a 40-lot park consisting of tiny shelters and recreational vehicles for individuals experiencing housing insecurity. The

shelter includes permanent supportive housing, shelter beds, single room occupancies, restrooms, showers, common kitchen, living areas, reception, and offices. The 40-lot park includes commons building, mobile sanitation unit with showers and toilets, and an onsite office. Caswell-Brown Village refers to the combined shelter and 40-lot park for low-income households/individuals without secure housing and/or who are unsheltered. During weather-related emergencies, Caswell-Brown Village is designed with landscaping, lighting, and flexible space to accommodate up to 150 individuals.

COMMENT PERIOD AND WHERE TO VIEW DOCUMENTS:

The application and any studies may be reviewed at the Jefferson County Department of Community Development (DCD) or online at <https://test.co.jefferson.wa.us/WebLinkExternal/0101/4745293/Row1.aspx>

Note: Because some notices issued for this matter included a link to attend the online hearing that was not operational on the hearing date - but others received a functional link enabling them to attend or observe the online public hearing held on Tuesday, August 29, 2023, beginning at 1:00 p.m. - the Hearing Examiner opened the public hearing, received testimony from participants, and held the record open to allow for additional written comments. The Examiner directed Staff to post a link to the recording for the public hearing, so any individuals who were unable to sign-in can watch the full hearing and submit written comments they might have regarding the pending application for a Conditional Use Permit. **To view a video recording of the August 29, 2023 public hearing, please either go to the Community Development Department, 621 Sheridan Street, Port Townsend or view the recording online:** <https://test.co.jefferson.wa.us/WebLinkExternal/Browse.aspx?id=4828541&dbid=0&rep=Jefferson>

Project Planner: Brent A. Butler, Chief Strategy Officer, bbutler@co.jefferson.wa.us, 360 3794493

For further information, please visit the Jefferson County Department of Community Development web page at www.co.jefferson.wa.us/commdevelopment/

205714 9/6

NOTICE OF BEHAVIORAL HEALTH ADVISORY COMMITTEE MEETING

The Jefferson County Behavioral Health Advisory Committee has scheduled a meeting on Tuesday, September 12, 2023 from 3:00pm to 4:30pm. This meeting will be a hybrid meeting: virtual and in-person at 1820 Jefferson Street, Port Townsend, WA 98368

Please contact amcenery@co.jefferson.wa.us for information on how to join the meeting virtually.

205708 9/6

REQUEST FOR PROPOSALS (RFP)

Middle Hoh River
Hoh River Resiliency - Lindner Complex Reach: Preliminary and Final Design
Jefferson County, Washington

Jefferson County is requesting proposals from qualified consulting firms to develop engineered designs for reach-scale restoration of the mainstem Hoh River and

floodplain using engineered log jams and other techniques to achieve multiple habitat and community objectives, and to create and support area jobs. The Middle Hoh River holds great significance for the Hoh Tribe, and the Lindner Creek area is central to valley tourism and pioneer family history. The reach (Milepost 5.0 - 6.5) is traversed by the Upper Hoh Road, which provides access to commercial, recreational, and residential areas as well as Olympic National Park. The Lindner project will identify, assess, and select options to reduce erosion risks to infrastructure that will also lead to habitat, water quality, and other benefits for wild fish, including spring Chinook and steelhead, by taking steps to reestablish habitat-forming processes altered by logging and roadbuilding, and by protecting and enhancing existing areas of high-quality habitat. It advances the Middle Hoh Resiliency Plan's highest priority action (<https://www.co.jefferson.wa.us/1427/Hoh-River-Resiliency-Plan>).

The complete Request for Proposals (RFP) is available at www.co.jefferson.wa.us/Bids.aspx. Proposals should demonstrate a balance of knowledge and experience in fisheries biology, civil engineering, fluvial geomorphology, hydraulic modeling, restoration project permitting, climate change and related impacts, and other technical fields. The design team should include licensed professional engineers and licensed professional geologists with experience in salmon habitat restoration in the Hoh River and/or comparable watersheds in Washington State. The overall project will be collaborative in nature, foster local employment, and involve periodic online and in-person meetings with the Hoh Tribe, landowners, a technical advisory committee, user groups, and the public. The anticipated Period of Performance lasts approximately 52 months, with an end date no later than June 1, 2026. A link to the downloadable proposal (PDF) must be received by the County no later than 5:00 p.m. **Pacific Standard Time on September 29, 2023**, at the following email address: tpokorny@co.jefferson.wa.us.

Questions regarding this request must be submitted in writing to Tami Pokorny, Natural Resources Program Coordinator, at tpokorny@co.jefferson.wa.us. Answers will be provided in writing to the requestor, or provided in amendment(s) to the solicitation. The final date to submit questions is September 15, 2023 at 5:00 pm Pacific Standard Time.

205659 8/30,9/6

O3A Notices

Olympic Area Agency on Aging (O3A) Council of Governments (COG) meets Thursday, September 7, 2023 in person at the Cotton Building, 607 Water Street, Port Townsend, WA 98368 at 10:00 a.m. Agenda includes review of State-Federal Contract Amendment #1 and an update on Area Plan development. There will be an Executive Session of approximately 15 minutes at the end of the agenda for a personnel review. Visit O3A's website www.O3A.org/Events for meeting agenda or call 1-866-720-4863. It is O3A policy that public meetings are accessible to people with disabilities. If you

need assistance to participate in a meeting due to a disability as defined under the Americans with Disabilities Act or Washington Law Against Discrimination, please contact O3A's ADA coordinator Carol Ann Laase at 866-720-4863 or email carolann.laase@dshs.wa.gov to request an accommodation at least 48 hours prior to the scheduled meeting. O3A's Advisory Council (AC) meets monthly on the 3rd Tuesday, see Events calendar on agency website.

205671 9/6

Notice to Creditors

IN THE SUPERIOR COURT OF THE STATE OF WASHINGTON IN AND FOR THE COUNTY OF JEFFERSON

In re the Estate of: ZELDA ELAINE KENNEDY, Deceased.

NO. 23-4-00087-16
NOTICE TO CREDITORS
[RCW 11.40.010 & .015]

The personal representative named below has been appointed and has qualified as personal representative of this estate. Persons having claims against the decedent must, prior to the time such claims would be barred by any otherwise applicable statute of limitations, serve their claim on the personal representative or the attorney of record at the address below stated and file an executed copy of the claim with the Clerk of this Court within four months after the date of first publication of this notice or within four months after the date of the filing of the copy of this Notice with the Clerk of the Court, whichever is later or, except under those provisions included in RCW 11.40.011 and RCW 11.40.013, the claim will be forever barred. This bar is effective as to the claim against both the probate assets and non-probate assets of the estate.

DATE OF FILING COPY OF NOTICE TO CREDITORS: Thursday, August 24, 2023
DATE OF FIRST PUBLICATION: Wednesday, August 30, 2023

Jerry F. Kennedy, Jr.
Personal Representative

JAMES A. DOROS WSBA #16267
Attorney for Estate

Personal Representative:
Jerry F. Kennedy, Jr.
4202 Hill Street Apt 1
Port Townsend, WA. 98368
c/o James A. Doros, Esq.

Attorney for Estate:
James A. Doros, WSBA 16267
11255 Rhody Drive
Port Hadlock, WA.98339
205632 8/30-9/13

Superior Court of Washington County of Kitsap

IN THE MATTER OF THE ESTATE OF
YVONNE KAY PETERSON
DECEASED

NO. 23-4-00848-18
PROBATE NOTICE TO CREDITORS

THE PERSONAL REPRESENTATIVE named below has been appointed as personal representative of this estate. Any person having a claim against the decedent must, before the time the claim would be barred by any otherwise applicable statute of limitations, present the claim in the manner as provided in RCW 11.40.070 by serving on or mailing to the personal representative or the personal representative's attorney at the address stated below a copy of the claim and filing the original of the claim with the court. The claim must be presented within the later of: (1) Thirty days after the personal representative served or mailed the notice to the creditor as provided under RCW 11.40.020(3); or (2) four months after the date of first publication of the notice. If the claim is not presented within this time frame, the claim is forever barred, except as otherwise provided in RCW 11.40.051 and RCW 11.40.060. This bar is effective as to claims against both the decedent's probate and nonprobate assets.

DATE OF FIRST PUBLICATION:
August 30, 2023

AMY M. GEHRKE,
Personal Representative

By:
MAUREEN F. McKEEMAN, WSBA #43390
Attorney for Personal Representative

ADDRESS FOR MAILING AND SERVICE:
18925 Front Street NE
PO Box 851
Poulsbo, WA 98370

205634 8/30-9/13



Sheriff's Sales

IN THE SUPERIOR COURT OF THE STATE OF WASHINGTON FOR THE COUNTY OF JEFFERSON

Olympic Canal Maintenance Co. Plaintiff,
v.
Bree D. Davidson-Caswell Defendant(s).

SHERIFF'S PUBLIC NOTICE OF SALE OF REAL PROPERTY No. 23-2-00058-16

TO: The Above-Listed Defendant(s).

The Superior Court of Jefferson County has directed the undersigned Sheriff of Jefferson County to sell the property described below, to satisfy a judgment in the above-entitled action. If developed, the property address is: **NKA Whale Rd., Brinnon, WA 98320. Parcel Number 980700805**

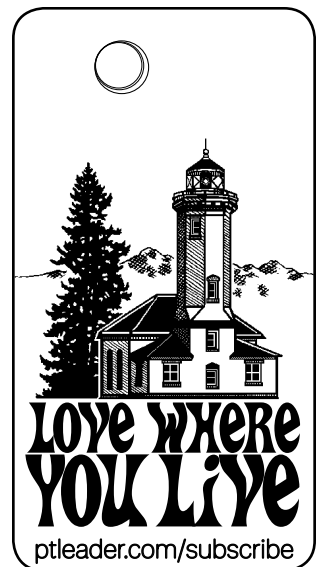
The sale of the above-described property is to take place:
Date/Time: 10:00 AM on 10/13/2023
Place: Jefferson County Court House, Main Entrance
1820 Jefferson Street, Port Townsend, WA, 98368

The judgment debtor can avoid the sale by paying the judgment amount of **\$6,990.60**, together with interest, costs and fees before the sale date. For the exact amount, contact the sheriff at the address stated below.

Joe Nole, Sheriff Jefferson County, Washington

By: Deputy Jennifer Moore, JCSO
79 Elkins Road, Port Hadlock, WA, 98339
360-385-9390 (phone)

205704 9/6-9/27



CALL the EXPERTS

JEFFERSON COUNTY DIRECTORY OF SERVICES

Port Townsend needs your expertise!

Call The Leader to place your Experts Ad 360-385-2900

CONSTRUCTION

JDG CONSTRUCTION
CONT LIC#JDGCO1.044BJ

JOHN D. GIESER

NEW RESIDENTIAL & REMODELING
CUSTOM BUILDER
BONDED • LICENSED • INSURED
www.jdgconstructionpt.com
360-385-3287
In Business since 1980

CONSTRUCTION

PSC LLC CONSTRUCTION

Remodels • Siding Roofing • Decks

360-302-6881
Licensed • Bonded • Insured
Contractor License: # PSCCOCL787J6

TREE SERVICE

PORT CITY TREE CARE

Tree Reduction & Removal
Property Clean-up
View Enhancement
Trimming, Limbing & Pruning

SCHEDULE YOUR FREE ESTIMATE TODAY
(360) 824-2403
LICENSED, BONDED & INSURED
portcitytreecare@gmail.com
LIC#PORTCCT773CW

LANDSCAPING

Call us for your landscape products

Leavitt Trucking & Excavating
385-4200

13584 Airport Cut-off Road, Port Townsend
Cont. Reg. #LEAVITI150 NK

WE CAN DO IT ALL

Remodels, Interior & Exterior Finishes, Framing

Fast Work & Finish-Carpenter Quality
Free Consultation • 43 years in the trade

MIKE BURNS CONSTRUCTION

Call Today!
360-301-5357
Lic#MikeBBC857N6

Home Improvement

Painting ♦ Drywall
Decks ♦ Foundations
Victorian Restorations

Jeff Gallant Construction

30 Years of Local Experience
Licensed Bonded Insured

(360) 643-3283
Lic# JEFFGCC881BU

YOUR FREE AD HERE

when you advertise in

CALL THE EXPERTS

Call for details:
360-385-2900

Green Monster SERVICES

Handyman • Painting • Rototilling
Yard Service • Trimming/Pruning
Moss Removal • Gutter Cleaning
Property Clean-up • Brush Removal

360-582-0384

FREE Estimates - No Job Too Small!
Meet or Beat any Licensed Bid!
Licensed & Insured #604225038

LANDSCAPE SPECIALISTS

Irrigation - Audits, Repair & Upgrades
Lawn & Landscape Renovation
Weed Management
Lawn Moss Management
Pruning

QUALITY LANDSCAPES

RESIDENTIAL & COMMERCIAL
qualitylandscapes@cablespeed.com
360-385-6663 or
360-531-0487
BONDED AND INSURED: CONTR#QUALIL123DG

EXCAVATING

Call Us For Your Dirt Work Needs

PROVIDING:
Underground Utility Install, Sewer Repairs
Excavation & Grading, Full Landscaping Services
Gravel Delivery, Land Clearing

360-385-4415
www.movingearthllc.com

HOME DECOR

FOX'S DRAPERIES
Lower prices than big box stores!

Offering top quality products for 40 years!

Norman Window Fashions

- Lifetime replacement warranty
- Free cordless upgrade

For a free consultation, call Jon Fox
(360) 379-2548 (916) 743-6837

Bonded and Insured.
License: FOXSDD*823BW

MASONRY

Rodeghier Masonry

(831) 461-4729

Enduring Quality
Timeless Craftmanship

Brick • Block Stone • Pavers Chimney Repair

MASONRY

Soaring Lion Stone Masonry

Entrances • Thresholds • Stairwells
Hearth • Flat/Dimensional Mortar Set • Ferrocement
(360) 301 0014 • LIC#SOARILS816LQ
stonegriffin@gmail.com
soaringlionstone.com

PAINTING

PHILLIPS PAINTING

Interior & Exterior
Pressure Washing
Free Estimates

360.732.0069

In Business since 1994
Contr #PHILLP*066KD

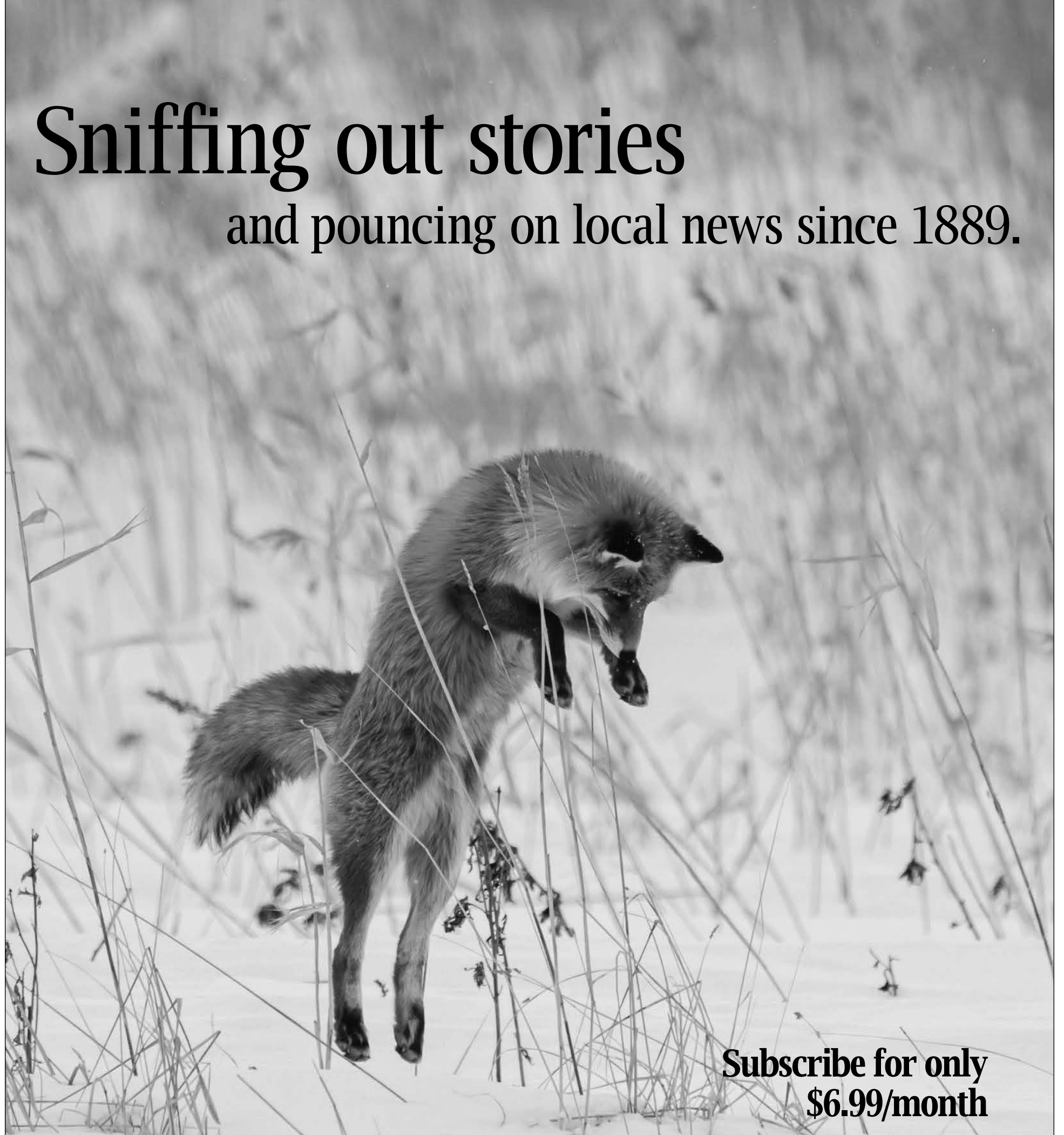
ONE MAN & A MOWER General Contractor

- Hauling/Moving • Gutter Cleaning
- Power Washing • Chain Saw Work
- Landscape Design

STEVE GODDARD
stevengoddard13@gmail.com

360-912-4829
www.onemanandamower.biz
Bonded / Insured / Lic# ONEMAM*874CR

Sniffing out stories and pouncing on local news since 1889.



**Subscribe for only
\$6.99/month**

No hidden fees. No contracts.
Delivered to your mailbox.

In Depth • In Touch • Independent

Stay connected with the latest local news, events and advertising. From in-depth business, school, government and community reporting to dining, shopping, real estate, jobs, sports, entertainment and events, we deliver trusted and reliable local and regional coverage you can count on.

Call or subscribe online for immediate access.
(360) 385-2900 • www.ptleader.com/subscribe



WEEK OF SEPTEMBER 6-13, 2023

DATE	HIGH	LOW
6 Wed	68°	50°
7 Thu	68°	50°
8 Fri	68°	51°
9 Sat	70°	53°
10 Sun	72°	54°
11 Mon	70°	53°
12 Tue	70°	52°
13 Wed	68°	51°

PORT TOWNSEND TIDES

DATE	HIGH				LOW				SUNRISE	SUNSET	MOON
	A.M.	ft.	P.M.	ft.	A.M.	ft.	P.M.	ft.			
6 Wed	12:02	7.2	9:04	7.7	3:33	0.0	3:49	6.2	6:34	7:44	☾
7 Thu	1:37	7.7	9:43	7.3	4:33	0.0	5:47	6.7	6:35	7:42	☾
8 Fri	2:42	8.1	10:39	6.8	5:37	0.1	8:01	6.6	6:37	7:40	☾
9 Sat	3:30	8.4	11:57	6.6	6:43	0.2	9:05	6.2	6:38	7:38	☾
10 Sun			4:08	8.4	7:43	0.3	9:39	5.8	6:39	7:36	☾
11 Mon	1:17	6.5	4:40	8.3	8:33	0.3	10:00	5.4	6:41	7:34	☾
12 Tue	2:23	6.6	5:05	8.2	9:15	0.4	10:16	4.9	6:42	7:31	☾
13 Wed	3:17	6.8	5:24	8.0	9:50	0.5	10:35	4.3	6:43	7:29	☾

DISCOVERY BAY TIDES

DATE	HIGH				LOW				SUNRISE	SUNSET	MOON
	A.M.	ft.	P.M.	ft.	A.M.	ft.	P.M.	ft.			
6 Wed	11:15	6.8	8:17	7.2	3:16	0.0	3:32	5.8	6:34	7:44	☾
7 Thu	12:50	7.2	8:56	6.8	4:16	0.0	5:30	6.3	6:35	7:42	☾
8 Fri	1:55	7.6	9:52	6.4	5:20	0.1	7:44	6.2	6:37	7:40	☾
9 Sat	2:43	7.9	11:10	6.2	6:26	0.2	8:48	5.8	6:38	7:38	☾
10 Sun			3:21	7.9	7:26	0.3	9:22	5.5	6:39	7:36	☾
11 Mon	12:30	6.1	3:53	7.8	8:16	0.3	9:43	5.1	6:41	7:34	☾
12 Tue	1:36	6.2	4:18	7.7	8:58	0.3	9:59	4.6	6:42	7:31	☾
13 Wed	2:30	6.4	4:37	7.6	9:33	0.5	10:18	4.0	6:43	7:29	☾

PORT LUDLOW TIDES

DATE	HIGH				LOW				SUNRISE	SUNSET	MOON
	A.M.	ft.	P.M.	ft.	A.M.	ft.	P.M.	ft.			
6 Wed	11:38	8.3	9:53	8.7	4:07	0.0	4:39	6.7	6:33	7:42	☾
7 Thu	1:23	8.6	10:52	8.0	5:06	0.2	6:32	7.2	6:34	7:40	☾
8 Fri			2:45	9.0	6:10	0.4	8:20	7.0	6:35	7:38	☾
9 Sat	12:05	7.6	3:41	9.3	7:18	0.5	9:24	6.4	6:37	7:35	☾
10 Sun	1:22	7.4	4:22	9.5	8:19	0.5	10:06	5.8	6:38	7:33	☾
11 Mon	2:27	7.6	4:53	9.5	9:11	0.4	10:38	5.3	6:39	7:31	☾
12 Tue	3:20	7.8	5:16	9.5	9:53	0.3	11:04	4.8	6:41	7:29	☾
13 Wed	4:04	8.1	5:33	9.4	10:30	0.5	11:26	4.2	6:42	7:27	☾

the Peach

Fresh picks from the Port Townsend & Jefferson County Leader September 6, 2023

THURSDAY NATURE TRIVIA NIGHT WITH NOSC

6 P.M. TO 8 P.M.

Back by popular demand, it's Trivia Night with North Olympic Salmon Coalition! While their usual focus is salmon, this time NOSC is going big with Nature Trivia! So bring your best all-ages nature trivia team for two hours of fun, wacky and fascinating trivia questions about the natural world. For example: did you know that the blue whale is related to the hippo? That the biggest salmon on record weighed in at 96 pounds? That there are 12 times more trees on earth than stars in the Milky Way...?! Well, neither did we, but now we do!

Donate on a sliding scale of \$5 to \$25 to enter a team. All proceeds benefit North Olympic Salmon Coalition. Best scoring teams win great prizes!

For more information, email info@finnriver.com.

FRIDAY

ILL AND KEVIN AT
DISCOVERY BAY BREWING
4 P.M. TO 7 P.M.

Jill and Kevin perform many of their own tunes as well classic country, swing and blues numbers.

Jill McAnally has been performing on stages from Alaska to Nashville Tennessee since she was 16 years old. She has opened for the Burrito Brothers, been called onstage to sing with Doc Watson, and has garnered praises from the likes of Don Everly. She is teaming up with her husband, the amazing blues and swing guitarist Kevin McConnell. Kevin, formally of the Lonestar Retrobates, whom he played with for nine years, has been picking since he was 10 in numerous bands, sharing the stage with everyone from Elvin Bishop to Texas playboy Johnny Cuiello.

This event is free. Visit discoverybaybrewing.com/events or call 360-344-2999 for more information.

**ELLIE BAIRD, ALTERNATIVE
SINGER/SONGWRITER
6 P.M. TO 8 P.M.**

Ellie is a singer/songwriter based in Port Townsend. Her music explores intimacy and nostalgia and is shaped by a desire to find solace and expression through the craft of songwriting. Find out more about her at elliebaird.com.

Plan to arrive 30 minutes before music starts. A \$3 or \$5/person cover charge (excluding children under 12) will be collected. All funds go to the artist.

For more information, email info@finnriver.com.

SATURDAY

SHRED EVENT BENEFITING
THE PORT TOWNSEND FOOD
BANK
9 A.M. TO NOON

Kitsap Bank is pleased to partner with the Port Townsend Food Bank by hosting a "From Shred to Fed" shred event at Kitsap Bank's Port Townsend branch, 2313 E Sims Way.

The public is encouraged to support the food bank by bringing outdated or sensitive documents for safe destruction and disposal, along with



WOODEN BOAT FESTIVAL

a monetary donation of their choosing. All funds raised at this event will go to supporting the Port Townsend Food Bank.

Participants are asked to limit documents to a maximum of 75 pounds per vehicle; and to make a cash or check donation in the amount they choose to the local food bank. Kitsap Bank will be holding a series of "From Shred to Fed" events throughout the region in September and October. For more information and to view details about other Kitsap Bank Shred Events around the region, visit kitsapbank.com/about-us/community-giving/events/.

**CHUCK EASTON'S SOUL
SYNDICATE, R&B/SOUL/JAZZ
6 P.M. TO 8 P.M.**

Chuck Easton and the Soul Syndicate features a horn section and vocals playing classic R&B and blue-eyed soul. The trumpet, saxophone and trombone drive the band in their renditions of tunes by James Brown, Blood Sweat and Tears, Tower of Power, Steely Dan, Isley Brothers, and others. Great music for listening and dancing!

30 minutes before music starts, a \$3 or \$5/person cover charge (excluding children under 12) will be collected. All funds go to the artists.

For more information, email info@finnriver.com.

**SUNDAY
DISCOVERY SECOND SUNDAY
WRITTEN WORD OPEN MIC
4 P.M. TO 6 P.M.**

Written word open mic, hosted by poet and teaching artist Gary Copeland Lilley.

Gary Lilley is the author of eight books of poetry, the most recent being "The Bushman's Medicine Show," and a chapbook, "The Hog Killing." He is originally from North Carolina and now lives in the Pacific Northwest. He has received the DC Commission on the Arts Fellowship for Poetry and is published in numerous anthologies and journals, including: "The Best American Poetry 2014," "Willow Springs," "The Swamp," "Waxwing," "Tao's Journal of Poetry and Art," and "African American Review." He is a Cave Canem Fellow.

Gary Lilley is currently the artistic curator of Centrum's Port Townsend Writers Conference.

This event is free. Visit discoverybaybrewing.com/events or call 360-344-2999 for more information.

**MONDAY
ENVIRONMENTAL CLEANUP
3:30 P.M. TO 5:30 P.M.**

"Ask not what your country can do for you, ask what you can do for your country." - John F. Kennedy

Join us for service to our community by helping with environmental cleanup. We will pick up trash along the roads. Bring gloves and garbage bags.

For more information, contact Hannah McFarland at oz108@yahoo.com, or visit EastJeffersonKennedy.org.

**SEPT. 15
OLD TIME TUNES WITH DAVE
AND FRIENDS
4 P.M. TO 7 P.M.**

Good listening, acoustic music!

This event is free. Visit discoverybaybrewing.com/events or call 360-344-2999 for more information.



DAUGHTERS OF NORWAY

**BOOK LAUNCH AND READING
7 P.M. TO 8 P.M.**

Please join award-winning writer Adrienne Harun as she launches her latest novel, "On the Way to the End of the World," with special guest, Tim McNulty.

The event is free. Books will be available for sale. Please contact Adrienne Harun at adrienneharun@gmail.com or 360-385-5271.

**AN EVENING WITH A
MASTER STORYTELLER
7 P.M. TO 9 P.M.**

Come join master storyteller Joe McHugh for a unique storytelling and music experience that calls upon the mysterious forces of fate to weave its spell.

48 enchanting stories, some embellished with an old-time fiddle tune, ballad, or poem, grace the Wheel—but only those spun by audience members come to life. Every show is different, as are the changing moments of our lives.

Joe McHugh is a storyteller and

author who has been regaling audiences with his lively tales for over 40 years throughout the United States and Europe. He is also a traditional musician and award-winning public radio journalist whose work has been featured on syndicated public radio programs such as Morning Edition, Inside Appalachia, and Voice of America. In 1970, after traveling the country in a converted school bus/leather shop, he purchased an 80-acre farm in Gilmer County, West Virginia, where he raised goats, chickens, and draft horses. It was there that he fell in love with the traditional music and storytelling style of the southern Appalachian Mountains. Many of the tales told on The Wheel of Fortunate Stories comes from these early experiences.

Tickets are \$20.

Email quimpergrange@gmail.com for more information.

volunteer who does not have a state park pass. Please bring garden or work gloves and come ready to pull grass. If you have garden hand forks and shovel, please bring as well.

Register at eventbrite.com/e/691931254007.

For more information about future events, volunteering, members or donations visit: friendsoffortflagler.org.

**EGG AND I POTTERY AND
FRIENDS ART SALE
10 A.M. TO 4 P.M.**

Come to an art sale at Egg and I Pottery! Owner Diana Cronin will open her studio and have her colorful ceramics for sale. Three additional artists will have booths there showing their artwork. These are Erica Iseminger (indigo and shibori dyed fabrics), Gail Hustedde (sculptural ceramics), and Sue Skelly (vintage button jewelry and woven cedar).

This event is free. Please visit eggandipottery.com/events, or contact Diana Cronin at muddycronin@mac.com or 360-316-1385.

**UKULELE WORKSHOP AND
CONCERT
1 P.M. TO 3 P.M.**

Ukuleles Unite of Port Townsend is hosting a concert and workshop by Neal Chin, award-winning ukulele performer and educator, at Grace Lutheran Church (1120 Walker Street, Port Townsend). Bring your ukulele!

Tickets are \$20, available on Brown Paper Tickets or at the door.

For more information, visit ukulelesunite.com.

**MINOR TROUBLES AT
DISCOVERY BAY BREWING
4 P.M. TO 7 P.M.**

Maybe the friendliest jazz quartet in Port Townsend. Paul Geoghan-McWilliams (bass), Lucien LaMotte (guitar), Eric Ode (keys), and Dana Sullivan (drums) will be laying down familiar tunes meant only to bring a little groove to your Saturday.

& BEYOND

**SEPT. 16
BEACH GLASS REMOVAL
9 A.M. TO 1 P.M.**

Join naturalist Lynn Schwartz and Friends of Fort Flagler at the Lower Campground in Fort Flagler (upper part of spit next to playground) to help restore our beach to a natural state. Protecting our beaches includes removing invasive species of beach grass that are choking out our natural grasses. The park will be giving free day passes to any

Windermere
REAL ESTATE

Exclusively serving
East Jefferson County

GINA JOHNSTON
360-821-1360

GET PICKED.

Advertise here.
360-385-2900

This event is free. Visit discoverybaybrewing.com/events or call 360-344-2999 for more information.

**SEPT. 17
DAUGHTERS OF NORWAY
1 P.M. TO 3 P.M.**

Janet Oakley will speak at Thea Foss #45 lodge of the Daughters of Norway meeting at the Fred Lewis Scout Cabin.

A dream of a man lying in the snow surrounded by German soldiers inspired Janet Oakley writing as J.L. Oakley to write two novels set in Norway in World War II – "The Jøssing Affair" and "The Quisling Factor." A prequel is coming out this September. Trained as a historian, writing the novels has led to decades-long research of the German occupation and those who resisted. In her presentation, Oakley will talk about the history behind the novels and her experience of researching for them in Norway and Shetland.

Donations welcomed but not expected.

Please contact Linda Morris at ptloon2@gmail.com for more information.

**SEPT. 21
STORY SLAM AT DISCOVERY
BAY BREWING
4 P.M. TO 6:30 P.M.**

If you have a story to tell, or want to read something aloud, even just a passage, poem, or joke you love, come on down! Or just come to listen. This is a production of The Church of BuVu of Port Townsend.

This event is free. Visit discoverybaybrewing.com/events or call 360-344-2999 for more information.

**SEPT. 22
SELENA TIBERT AND CATHY
TIBERT AT DISCOVERY BAY
BREWING
4 P.M. TO 7 P.M.**

Selena is an indie folk singer-songwriter based out of Brooklyn, N.Y. Selena weaves together intimate lyrics and soothing guitar to explore themes of introspection, time and identity. She takes inspiration from musicians such as The Staves, Laura Marling, Marika Hackman, and Brandi Carlile. The mother-daughter duo also includes Cathy Tibert of the Key City Ramblers, who will join Selena for a variety of familiar covers blending their voices in engaging harmonies.

This event is free. Visit discoverybaybrewing.com/events or call 360-344-2999

**chimacum
corner
farmstand**
GROCERY & NURSERY

**B.L.T. - best local
TOMATOES!**

visit us! **YUM!**

SPRINGRAIN **RED DOG**
STELLAR J **MIDORI**
SOFT STEP **FROG HILL**
SPACE TWINS **KODAMA**

FOOD FROM HERE open daily 9am-7pm

9122 Rhody Drive, Chimacum, WA
360-732-0107, chimacumcorner.com

proud host of the
CHIMACUM FARMERS MARKET
SUNDAYS 10-2
June - October

**NEW & USED
Musical Instruments**

Crossroads Music
2100 Lawrence St.
Port Townsend 360-385-1471

**meadow magic for
your table**
locally grown, seasonal flowers

delivery arrangements
weddings & events • classes

www.fabledflora.com

Fabled Flora Farm Stand:
Howard & Hastings Ave, Port Townsend

Watching like a hawk...

...for breaking news since 1889.



**Subscribe for only
\$6.99/month**

No hidden fees. No contracts.
Delivered to your mailbox.

Call or subscribe online for immediate access.
(360) 385-2900 • www.ptleader.com/subscribe



Left: Rose star, sunflower sea star, wolf eel, and close-up of the Giant Pacific octopus tentacle and eye, courtesy of Rhoda Green and Georgia Arrow. Right: Dr. Jason Hodin, University of Washington Senior Research Scientist, will present a lecture on Sunflower Sea Stars, many of which recently found a new home. Courtesy photos

A new home for local octopi

As part of the Point Hudson jetty replacement project, divers from Widener and Associates of Everett are pulling together a list of more than 3,600 species moved from the marina's jetties to a nearby rock habitat in July.

The north jetty was recently replaced and the south jetty will be replaced this winter. Point Hudson Marina will close immediately following this week's Wooden Boat Festival.

"The rock from the north jetty has been used to form a habitat nursery southwest of the project site. There is an existing community of organisms on the south jetty structure, and therefore to preserve as much life as possible, divers from the Port Townsend community have volunteered to move animals from the old structure and rock to

the habitat nursery before destruction of the structure," Jeanette Widener told The Leader.

Relocation of animals, she added, began July 27 with four group dives completed and several individuals diving on their own, more than a dozen times.

"We hope to continue through Sept. 15 when the in-water work to remove the jetty begins," she said.

A variety of species have been relocated from the jetty, including arthropods, cnidarians, echinoderms, mollusks, poriferans, urochordates, and kelp.

"Mollusks make up the greatest number of animals, including snails and limpets and a variety of other chiton and nudibranch species. A variety of other animals were found including four sunflower stars, which are currently

under consideration as a threatened species. Additionally, three large octopi and two wolf eels have been spotted living in the rocks of the habitat nursery," Widener stated.

The work, she said, was made possible with the help of the dozens of volunteer divers from all over Puget Sound, Washington SCUBA Alliance and the Octopus Gardens dive shop as well as the creative Port staff and dedicated staff at WDFW, NOAA, and the USFWS.

Next month Jason Hodin, University of Washington Senior Research Scientist, will present a lecture on sunflower sea stars, currently at risk due to Sea Star Wasting disease as part of the Port Townsend Marine Science Center's lecture series, 3 p.m. Oct. 8 at the Fort Worden Chapel.

Jail diversion program nets half million in grant funds

KATHY CRUZ
KCRUZ@PTLEADER.COM

Thanks to a newly funded diversion program, those whose behavioral health challenges have underlying causes such as substance use disorders, mental instability or poverty will be shown help and compassion rather than a jail cell when they have nonviolent encounters with law enforcement.

Law Enforcement Assisted Diversion, or LEAD, is a national program that enlists community partners to provide ongoing case management for those whose behavioral health needs are not helped by serving jail time. The initiative is also intended to help law enforcement and 911 emergency systems, which have been forced to deal with those calls in addition to other life-threatening emergencies.

"The LEAD program is an approach to criminal justice that seeks to address low level and or nonviolent misdemeanor offenses in a more compassionate and effective manner," said program administrator Gabbie Caudill.

Jefferson County's LEAD program was recently funded through two sources: \$400,000 from a state law enforcement organization and \$100,000 from Olympic Community of Health's Stronger Together initiative. At the time she spoke with The Leader, Caudill, a substance use disorder professional (SUDP), a licensed mental health counselor (LMHC) and one of the owners of Believe in Recovery, said she was unsure whether she had the authority to publicly reveal the name of the state organization.

In addition to Caudill, Jefferson County's LEAD program includes program manager Brie Gutierrez and case managers Andrew Nelson, Danielle Vasenda, and Alicia

Reynolds.

Caudill said that one of the goals of the program is to reduce recidivism.

"We do that by collaborating with communities and individuals, which helps reduce the re-arrest rates and promotes rehabilitation, which then helps break the cycle of recidivism," she stated.

"LEAD also addresses the underlying causes of criminal behavior like addiction, mental health issues and poverty, which helps improve public safety. And then LEAD also seeks to divert an individual away from the legal system to community-based interventions and services, which minimizes the strain on jails, courts and our law enforcement resources, leading to potential cost saving for the community."

Caudill also noted that LEAD enhances collaboration between law enforcement and social service providers. Jefferson County LEAD has partnered with the Port Townsend Police Department, the Jefferson County Sheriff's Office, the jail, the prosecutor's office, the Jefferson Associated Counsel, which is the public defender's office, and with Olympic Community Action Programs (OlyCAP) for housing assistance, she said.

"I think most important is the capability of this program to address the root causes of addictive and criminal behaviors, which raises the chances of breaking the criminal behavior cycles for people," the social worker said.

Caudill said that in 2021, 1,377 calls were cleared by the Port Townsend Police Department with a code that reflected that someone had either experienced a mental health issue, were on drugs or had been drinking. That same year, the Sheriff's Office received 650 similar calls, she said.

"In 2021, the jail had 585 bookings," Caudill said. "And of those, 186 self-reported

that they were experiencing an active substance use issue."

The mental health counselor added that deferrals such as those handled by the LEAD program are allowable under the law.

"An officer will identify individuals in the field who have committed a low level or non-violent offense and decide whether or not they

divert individual pre-arrest," Caudill said.

"So, this is a pre-arrest program, which means that if they're making engagement with our program and they're setting up goals for themselves and following through with those goals with their case managers, those charges will never see the court."



SEPT 21-25, 2023 BUY PASSES AT PTFILMFEST.COM
FOR 10% OFF USE DISCOUNT CODE: 23LEADER



MADE POSSIBLE WITH THE SUPPORT OF





Here for all of
your marketing
needs.

Cyrus L. Gubelman
Leader Marketing

(360)385-2900 • cgubelman@ptleader.com



Wooden Boat Festival

Schedule 2023

F Family Fun **G** Get On The Water **H** Hands on **L** Live Music **P** Presentation & Demo

S Special Events **C** Special Movie presentation **R** Special presentation

SEPTEMBER 7 • THURSDAY

8:00am – 3:00pm	R	Marine Diesel Engine Maintenance and Troubleshooting: a 6 hour workshop (Extra fee) <i>Speakers: Nigel Calder</i>	Cruising Stage (431 Water Street, Port Townsend, WA, USA)
5:00pm – 5:45pm	L	The Alternators <i>Artists: Alternators</i>	Main Stage - Bar Harbor
5:30pm – 8:00pm	S	Lifetime Achievement Awards	Cruising Stage (431 Water Street, Port Townsend, WA, USA)
6:00pm – 7:30pm	L	Midnight Train Blues Band <i>Artists: Midnight Train Blues Band</i>	Main Stage - Bar Harbor
8:00pm – 10:00pm	L	Lowire <i>Artists: Lowire</i>	Main Stage - Bar Harbor

SEPTEMBER 8 • FRIDAY

8:00am – 3:00pm	R	Boat Electrical Systems Design, Installation, and Troubleshooting: a 6 hour-workshop (Extra fee) <i>Speakers: Nigel Calder</i>	Technical Stage
9:00am – 9:00am		Festival Gates Open	
9:30am – 10:15am	P	12 Multihulls Worth Building for the PNW <i>Speakers: Peter Walford</i>	Cruising Stage (431 Water Street, Port Townsend, WA, USA)
9:30am – 10:15am	P	Adventure Racing! Heck if I know! <i>Speakers: Lillian Kuehl</i>	Adventure Stage
9:30am – 12:00pm	P	Building a Traditional Sliding Rowing Seat <i>Speakers: John McCormack</i>	Discovery Stage
9:30am – 4:45pm	F	Paddlewheeler Rides - Free	On the Water
9:30am – 5:00pm	F	Gyotaku Fish Printing	Kids Cove - Boatbuilding Tent
9:30am – 5:00pm	F	Kids' Boatbuilding	Kids Cove - Boatbuilding Tent
9:30am – 5:00pm	H	Wood Turning: Make a Wooden Pen, Small Bowl or Small Project	Woodworking Tent
9:30am – 5:30pm	H	Make Your Own Cheese Board	Woodworking Tent
10:00am – 10:45am	P	Liverpool Eye Splice	Brion Toss Rigging Shop
10:00am – 10:45am	P	Plug-in Boats: What You Need To Know To Get Started <i>Speakers: Thomas Hruby</i>	Green Boating Stage
10:00am – 10:45am	P	Sail Inspection and Repair <i>Speakers: Alison Wood</i>	Boat Yard Stage
10:00am – 10:45am	P	Sharpening Chisels and Planes <i>Speakers: Tim Lawson</i>	Woodworking Stage
10:00am – 10:45am	P	Steam Bending & Boatbuilding <i>Speakers: Sean Kooman</i>	Boatbuilding stage
10:00am – 11:00am	P	Liverpool Eye Splicer	Brion Toss Rigging Shop
10:00am – 2:30pm	G	Boat Tour on Admiral Jack	On the Water
10:00am – 5:00pm	G	Left Coast Charters- Katie M	On the Water
10:00am – 5:00pm	G	Sound Experience - Adventuress Sails	On the Water
10:00am – 5:00pm	H	Try Corking a Boat	Boatshop
10:00am – 6:00pm	F	Bumblebee Sailboat Rides - Free!	Kids Cove
10:00am – 6:00pm	G	Paddleboard Pool - Free	Kids Cove
11:00am – 11:45am	P	Finding AMA Futura: A New Solar Electric Long Range Boat <i>Speakers: Capt Peter Wilcox</i>	Green Boating Stage
11:00am – 11:45am	P	Making Wooden Cleats	Boatbuilding stage
11:00am – 11:45am	P	Nautical Photography Tips and Tricks <i>Speakers: Jeffrey Eichen</i>	Cruising Stage (431 Water Street, Port Townsend, WA, USA)
11:00am – 11:45am	P	SEASTR Adventure Racing and Inclusionary Watersports <i>Speakers: Erica Lichty</i>	Adventure Stage
11:00am – 11:45am	P	Wooden Boat Survey <i>Speakers: Patrick Mahon</i>	Boat Yard Stage
11:00am – 12:00pm	P	Sail Maintenance & Repair	Artful Sailor Shop
11:00am – 3:30pm	G	Row & Sail a Longboat - Free	On the Water
12:00pm – 12:15pm	P	Underwater Tips <i>Speakers: Mike Novack</i>	Boat Yard Stage
12:00pm – 12:45pm	L	Jill & Kevin <i>Artists: Jill and Kevin</i>	Main Stage - Bar Harbor
12:00pm – 12:45pm	P	Composting Toilets For Boats and The Environment <i>Speakers: Geoffrey Trott</i>	Green Boating Stage
12:00pm – 12:45pm	P	Intro to Marine Corrosion <i>Speakers: Kevin Ritz</i>	Boatbuilding stage
12:30pm – 1:15pm	P	Aquila Sails: Resourceful Amateurs Rebuild a 34 foot William Garden Cutter <i>Speakers: Eben Shay & Richard Reeves</i>	Cruising Stage (431 Water Street, Port Townsend, WA, USA)
12:30pm – 1:15pm	P	R2AK Team Monkey Fist <i>Speakers: Robert Hodge</i>	Adventure Stage
12:30pm – 1:30pm	P	Calypso: Cruising by the Seat of our Pants <i>Speakers: Dennis McGuire</i>	Discovery Stage
1:00pm – 1:45pm	L	Rick Allyn <i>Artists: Flick Allyn</i>	Main Stage - Bar Harbor
1:00pm – 1:45pm	P	Changes in Culture and Behavior: Getting Greener in Marine Coatings <i>Speakers: David Atwater</i>	Green Boating Stage
1:00pm – 1:45pm	P	Mortising with a Plunge Router <i>Speakers: John McCormack</i>	Woodworking Stage
1:00pm – 1:45pm	P	Tapes on the Table <i>Speakers: Korey Rubin</i>	Boatbuilding stage
1:00pm – 1:45pm	P	The Foundrymans Craft	Boat Yard Stage
1:00pm – 2:30pm	G	Friday I 26' and Under Race	On the Water
2:00pm – 2:45pm	L	Bobbi Nikles	Main Stage - Bar Harbor
2:00pm – 2:45pm	P	Building Camas Moon <i>Speakers: Alex Zimmerman</i>	Discovery Stage
2:00pm – 2:45pm	P	Chopping Rabbets <i>Speakers: Tucker Piontek</i>	Boatbuilding stage
2:00pm – 2:45pm	P	Small Boats to Send Kids Across Big Waters <i>Speakers: Colin Angus</i>	Cruising Stage (431 Water Street, Port Townsend, WA, USA)
2:00pm – 2:45pm	P	Tenoning on the Table Saw <i>Speakers: John McCormack</i>	Woodworking Stage
2:00pm – 2:45pm	P	The Inside Passage on 100% Solar Power <i>Speakers: Alex Borton</i>	Green Boating Stage
2:00pm – 2:45pm	P	The World's Longest Paddle Race: An Average Dad Takes on the Yukon <i>Speakers: Brian Harman</i>	Adventure Stage
2:00pm – 3:00pm	H	Three Strand Rope Splicing & Hands-on Grommet Making	Artful Sailor Shop
2:00pm – 3:00pm	P	40 Years in the Marine Trades: Our Teachers and Lessons <i>Speakers: Ernie Baird, Diana Talley</i>	Boat Yard Stage
2:00pm – 3:00pm	P	Celestial Navigation <i>Speakers: Jeffrey Sanders</i>	Discovery Stage
3:00pm – 3:45pm	L	Andy Koch's Bad Dog Blues Society <i>Artists: Andy Koch's Badd Dog Blues Society</i>	Main Stage - Bar Harbor
3:00pm – 3:45pm	P	The Foundrymans Craft	Boatbuilding stage
3:00pm – 3:45pm	P	Wakespeed 101: Select, Install, and Configure your WS500 Advanced Alternator <i>Speakers: Al Thomason</i>	Green Boating Stage
3:30pm – 4:15pm	P	Sail Inventory and Handling <i>Speakers: Erica Georgaklis</i>	Discovery Stage
3:30pm – 4:15pm	P	Womens Adventure Panel	Adventure Stage
4:00pm – 4:45pm	L	Tania Opland <i>Artists: Tania Opland</i>	Main Stage - Bar Harbor
5:00pm – 5:45pm	L	Jean Lenke & the Jean Therapy West Band <i>Artists: Jean Lenke & Jean Therapy West</i>	Main Stage - Bar Harbor
6:00pm – 7:30pm	L	The Delta Rays <i>Artists: The Delta Rays</i>	Main Stage - Bar Harbor
6:00pm – 9:00pm	S	Blazer Party	Cruising Stage (431 Water Street, Port Townsend, WA, USA)
8:00pm – 11:00pm	L	Joy in Mudville <i>Artists: Joy in Mudville</i>	Main Stage - Bar Harbor

SEPTEMBER 9 • SATURDAY

8:00am – 10:00am	G	Saturday I Rowing Race	On the Water
9:00am – 9:00am		Festival Gates Open	
9:00am – 7:00pm	G	Saturday I NW Schooner Cup	On the Water
9:15am – 4:15pm	F	Paddlewheeler Rides - Free	On the Water
9:30am – 9:45am	P	The Healing Waters <i>Speakers: Dean Burke</i>	Adventure Stage
9:30am – 10:15am	P	History of the Steam Mosquito Fleet of the Salish Sea <i>Speakers: Stewart Pugh</i>	Discovery Stage
9:30am – 10:15am	P	Sailboat Standing Rigging <i>Speakers: Lisa Vizzini</i>	Technical Stage
9:30am – 10:15am	P	Take me to the Water: Histories of the Black Pacific Project <i>Speakers: Caroline Collins</i>	Cruising Stage (431 Water Street, Port Townsend, WA, USA)
9:30am – 3:30pm	H	Wood Turning: Make a Wooden Pen or Small Bowl	Woodworking Tent
9:30am – 5:00pm	F	Gyotaku-Fish Printing	Kids Cove - Boatbuilding Tent
9:30am – 5:00pm	F	Kids' Boatbuilding	Kids Cove - Boatbuilding Tent
9:30am – 5:00pm	H	Wood Turning: Make a Wooden Pen or Small Bowl	Woodworking Tent
9:30am – 5:30pm	H	Make Your Own Cheese Board	Woodworking Tent
10:00am – 10:45am	P	Changes in Culture and Behavior: Getting Greener in Marine Coatings <i>Speakers: David Atwater</i>	Green Boating Stage
10:00am – 10:45am	P	Good Fiberglassing Techniques <i>Speakers: Bruce Blatchley</i>	Boatbuilding stage
10:00am – 10:45am	P	How to Buy or Sell Your Boat <i>Speakers: Rob Sanderson</i>	Boat Yard Stage
10:00am – 10:45am	P	Sharpening Chisels and Planes	Woodworking Stage
10:00am – 10:45am	P	Synthetic Fiber Standing Rigging <i>Speakers: Ian Weedman & Jen Bates</i>	Discovery Stage
10:00am – 11:00am	P	Sail Maintenance & Repair	Artful Sailor Shop
10:00am – 11:00am	P	Synthetic Fiber Standing Rigging	Brion Toss Rigging Shop
10:00am – 11:45am	H	How to Stitch and Glue <i>Speakers: Matthew Weaver</i>	End of Boatshop
10:00am – 2:30pm	G	Boat Tours on Admiral Jack	On the Water
10:00am – 4:30pm	G	Row & Sail a Longboat - Free	On the Water
10:00am – 5:00pm	G	Left Coast Charters - Katie M	On the Water
10:00am – 6:00pm	F	Bumblebee Sailboat Rides - Free	Kids Cove
10:00am – 6:00pm	G	Paddleboard Pool - Free	Kids Cove
10:00am – 6:00pm	G	Sound Experience - Adventuress	On the Water
11:00am – 11:45am	P	Building Adventuress' Hollow Spruce Topmast Rig <i>Speakers: Esther Whitemore & Daniel Hawkins</i>	Boat Yard Stage
11:00am – 11:45am	P	Demystifying Foils	Boatbuilding stage
11:00am – 11:45am	P	Sailing into our 70s <i>Speakers: Kaci Cronkhite</i>	Cruising Stage (431 Water Street, Port Townsend, WA, USA)
11:00am – 11:45am	P	Seeking Synchronicity: A Solo Kayak Journey Up the Inside Passage <i>Speakers: Susan Conrad</i>	Adventure Stage
11:00am – 11:45am	P	The State of the Sound <i>Speakers: Ahren Stromming</i>	Green Boating Stage
11:00am – 12:00pm	P	Cruising to Alaska: The Dream Trip <i>Speakers: Mark Bunzel</i>	Technical Stage
11:00am – 12:00pm	P	Marine Weather in Electronic Charting Systems <i>Speakers: Dave Wilkinson</i>	Discovery Stage
12:00pm – 12:45pm	L	The Shifty Sailors <i>Artists: The Shifty Sailors</i>	Main Stage - Bar Harbor
12:00pm – 12:45pm	P	Cold Molding & Boatbuilding <i>Speakers: Sean Kooman</i>	Boatbuilding stage
12:00pm – 12:45pm	P	Decarbonization Awards <i>Speakers: Capt Peter Wilcox</i>	Green Boating Stage
12:00pm – 12:45pm	P	Schooner Adventuress' Fiber Topmast Rig <i>Speakers: Ian Weedman & Jen Bates</i>	Boat Yard Stage
12:00pm – 2:00pm	S	Festival Poster Artist - Meet, greet, and get your poster signed <i>Artists: Lydia Beauregard</i>	Merch Tent
12:30pm – 1:15pm	P	Offshore Readiness <i>Speakers: Lisa Vizzini</i>	Technical Stage
12:30pm – 1:15pm	P	The Compass: Traditional Navigation in the Age of Electronics <i>Speakers: Robert Bergstrom</i>	Discovery Stage
12:30pm – 1:15pm	P	Woman, Captain, Rebel: The Extraordinary True Story of a Daring Icelandic Sea Captain <i>Speakers: Margaret Wilson</i>	Cruising Stage (431 Water Street, Port Townsend, WA, USA)
12:30pm – 1:15pm	P	Wood Boat, Whales and Winning the Race to Alaska! <i>Speakers: Jeanne Goussev</i>	Adventure Stage
1:00pm – 1:45pm	L	Pint & Dale <i>Artists: William Pint & Felicia Dale</i>	Main Stage - Bar Harbor
1:00pm – 1:45pm	P	Adventure Sketching <i>Speakers: Maria Coryell-Martin</i>	Boat Yard Stage
1:00pm – 1:45pm	P	Outboard Maintenance <i>Speakers: Tyler Johnson</i>	Boatbuilding stage
1:00pm – 1:45pm	P	Plug-in Boats: What You Need to Know to Get Started <i>Speakers: Thomas Hruby</i>	Green Boating Stage
2:00pm – 2:30pm	P	Trading up- Navigating Career Transitions to Build a Meaningful Life in the Maritime Trades <i>Speakers: Kaci Cronkhite</i>	Cruising Stage (431 Water Street, Port Townsend, WA, USA)
2:00pm – 2:45pm	L	Strikes a Bell <i>Artists: Strikes a Bell</i>	Main Stage - Bar Harbor
2:00pm – 2:45pm	P	Nautical Photography Tips and Tricks from Click to Print <i>Speakers: Jeffrey Eichen</i>	Discovery Stage
2:00pm – 2:45pm	P	New Techniques in Stitch and Glue Boatbuilding <i>Speakers: Sam Devlin</i>	Technical Stage
2:00pm – 2:45pm	P	The Magic of Silica Gel <i>Speakers: Chuck Laguna</i>	Green Boating Stage
2:00pm – 2:45pm	P	Wakespeed 101: Select, Install, & Configure your WS500 Advanced Alternator Regulator <i>Speakers: Al Thomason</i>	Boatbuilding stage
2:00pm – 3:00pm	H	Three Strand Rope Splicing & Hands-on Grommet Making	Artful Sailor Shop
2:00pm – 3:00pm	P	Adventure Therapy For Veterans at Sea: My Story <i>Speakers: Justin Cronin</i>	Adventure Stage
2:00pm – 3:45pm	P	Varnishing Tips and Tricks <i>Speakers: Joni Blanchard</i>	Boat Yard Stage
2:30pm – 3:30pm	S	Schooner Cup	On the Water
3:00pm – 3:45pm	L	Pint & Dale <i>Artists: William Pint & Felicia Dale</i>	Main Stage - Bar Harbor
3:00pm – 3:45pm	P	Stories of Orcas, Overnights, and other Adventures in the PNW <i>Speakers: Greg Kroleski</i>	Adventure Stage
3:00pm – 3:45pm	P	Wood Screws Nuance: Tips and Tricks for Fastening <i>Speakers: Korey Rubin</i>	Boatbuilding stage
3:30pm – 4:15pm	P	"Shanghaied" A New Historical Fiction <i>Speakers: Jon Howe</i>	Discovery Stage
3:30pm – 4:30pm	P	Yacht Designer Panel <i>Speakers: Sam Devlin</i>	Technical Stage
4:00pm – 4:45pm	L	Capt Matt & Tugboat <i>Artists: Capt Matt</i>	Main Stage - Bar Harbor
4:00pm – 5:00pm	S	Dovetail Workwear Show	Future of Maritime
5:00pm – 5:45pm	L	Bread & Gravy <i>Speakers: Bread & Gravy</i>	Main Stage - Bar Harbor
6:00pm – 8:00pm	L	Slowburn <i>Artists: Slowburn</i>	Main Stage - Bar Harbor
6:30pm – 8:30pm	C	A Most Beautiful Thing <i>Speakers: Arshay Cooper</i>	Cruising Stage (431 Water Street, Port Townsend, WA, USA)
8:00pm – 11:00pm	L	Uncle Funk & the Dope 6 <i>Artists: Uncle Funk And The Dope 6</i>	Main Stage - Bar Harbor

JEFFERSON COUNTY this week

ARTS & ENTERTAINMENT



Shin Yu Pai, the current Civic Poet of Seattle, will be in town 2 p.m. Sunday, Sept. 10 for a poetry reading at Wilderbee Farm. Leader photo by Anna Tallarico

Seattle poet shares work of belonging

ANNA TALLARICO
ATALLARICO@PTLEADER.COM

Current Civic Poet of Seattle Shin Yu Pai knows disconnect. But she also knows belonging.

“My interest in writing poetry stemmed from finding that language in which I could express myself,” she told *The Leader*, tucking her legs under her on the loveseat nestled within her small studio space.

Her eyes wandered, landing on the window that looked out over her forested backyard.

“Having such a creative mother and father who was invested in literature...there was an affinity for me toward poetry as the main medium for my art.”

“But,” she continued, a small smile flitting across her face as she paused.

“My mother did not speak much English. She was a visual artist, with a visual vocabulary. It was this other language in which I could get to know her in the absence of being fluent in Taiwanese.

“Since we didn’t have a common language, for me, poetry became this third space of desire and longing in a symbolized language of metaphor; it’s where my mother and I could bridge the disconnect between culture and language and find each other there.”

Pai is the second-born child of immigrants who came from Taiwan as young adults in the 1970s. They ended up settling in a part of southern California, where, Pai noted, there weren’t many Asians.

“I had a very bicultural upbringing and identity,” she said.

“I had a traditional Taiwanese home experience, and then I had to assimilate into an American public school.”

As she got older and began to study writing, Pai said that her practice morphed into a desire to use

her voice as an Asian American woman.

“Historically in many cultures — my culture in particular — there is a heavy patriarchal, oppressive, sexist, misogynistic view toward women, with a goal to keep them silent and small.”

Because of these dichotomies, Pai said certain themes grew within her poetry.

“I consider a lot of my writing place-based,” she explained.

“Nature is very important to me,” she said as an example. “It is tied to a sense of belonging to a place. It serves as a marker; anywhere I’ve lived, there is something unique to the area that draws me in and helps me find connection.”

And she has indeed lived a lot of places. Pai was born in Illinois, grew up in Riverside, Calif., went to Boston for her undergraduate, moved to Colorado, then to Chicago to finish graduate school; relocated to Dallas with her partner, then back to Boston so that he could go to acupuncture school. They moved back to Dallas so he could care for his mother, who was ill. Around that time, they visited Seattle. After a brief stint in Arkansas, Pai decided she was “done with the south forever” and officially made her home in Seattle.

“A lot of migrations,” she mused.

“Returning to certain areas helped me process things that were unfinished. Cities change while you’re gone. But one commonality was that in every place I’ve lived, I’ve found a handful of poets to be my people.”

Pai marveled at how poetry drew her attention to how communities can support each other and build together.

“That sensibility then allowed me to navigate between different pockets of communities; it became more navigable when I understood these things about literary citizenship.”

Literary citizenship, she explained, is all part of the practice of involvement; supporting one’s

artistic community.

“My practice is very interdisciplinary,” she said.

“It’s not simply being a poet at my desk. I produce podcasts, reading series, and events. I read and review other’s books. I spend time with musicians, visual artists, dancers.”

This past spring, Pai collaborated with a dancer colleague to start a somatic arts collective.

“We meet once or twice a week. It’s not a typical writing group. We get together and check in on two accounts: ‘what’s been going on in your body?’ and ‘what have you been reading lately?’”

Pai said she was excited to have this practice because, according to her, so many writers are stuck in their head.

“They write from the neck up. Their work feels intellectual, not embodied. Dance helps.”

As for her podcast, “Ten Thousand Things,” it is in the top one percent of all podcasts published, was listed on Mashable’s top 10 best podcasts of 2023, and reached 200,000 downloads. It is produced by KUOW Public Radio, an affiliate station of NPR.

“It’s specifically for Asian American stories, artists, activists, leaders,” she said. “It’s about bringing more positive stories about our community at a time when there is a rise in hate crime.”

Pai’s dream is to be a public radio host. But in the meantime, she will have to fall back on her 11 published books, awards from the City of Seattle’s Office of Arts and Culture, 4Culture, and The Awesome Foundation, title of 2022 Artist Trust Fellow and Poet Laureate for the city of Redmond, and the prestige of being shortlisted in 2014 for a Stranger Genius Award in Literature.

Pai’s new anthology of poetry is coming out later this year, published by Empty Bowl Press.

Pai will be in Port Townsend 2 p.m. Sunday, Sept. 10 at Wilderbee Farm to read selected works at Poetry on the Salish Sea. The event is free. For more information, visit wilderbeefarm.com/poetryseries.



YES, Please save me \$10 and gift a 1 year subscription to a friend! Send to:

Name _____

Address _____

Phone _____

Email _____

.....
My name _____

Address _____

Phone _____

Email _____

VISA MC DSCVR AMEX

CC Card # _____

Security Code _____ Exp. date _____

1 year only \$70 in-county (\$84 out of county)

2 year only \$135 in-county (\$159 out of county)



VOICES OF THE LEADER

Whether your passion is pop culture or aquaculture, food, film or flowers, The Leader's rotating cast of top-shelf columnists has you covered. Every issue brings a fresh, original piece by one of our experts.

Tune in each week!

WEEKS 1 & 3

Sidonie Maroon,
Kitchen to Kitchen

WEEK 2

Barbara Faurot,
Garden Notes

BACK TO SCHOOL FUEL!



30+ Items
Buy One,
Get One FREE
Aug. 30-Sept. 12



414 Kearney Street, Port Townsend, WA
Open Daily 8am-9pm
www.foodcoop.coop
(360)-385-2883



Weekly SUDOKU

by Linda Thistle

9				8		2		
		7	3				8	6
	8			2		1		
		1			3		5	
	6			4				3
4			8			7		
		2		3				1
	1				5		3	
5			2	4	6			

Place a number in the empty boxes in such a way that each row across, each column down and each small 9-box square contains all of the numbers from one to nine.

DIFFICULTY THIS WEEK: ♦♦

♦ Moderate ♦♦ Challenging
♦♦♦ HOO BOY!

© 2023 King Features Synd., Inc.

It's pickling time

My grandma taught me to preserve bread and butter pickles. We picked fresh Kirbys from the garden, washing, slicing and packing them into pint jars. A hot vinegar brine made with sugar, mustard seeds, and a pinch of celery seeds covered the cucumbers. We laid lids on, with rings tightened, and into a hot water bath they went for 15 minutes.

WILD FERMENTATION

This was my idea of pickling until Sandor Katz wrote his famous book "Wild Fermentation" in 2003.

His innovative book began the lacto-fermentation craze and changed our conception of the pickle. Even though the recorded history of lacto-fermented foods is over 3,000 years old, we'd forgotten how easy, delicious and healthful this process is.

The word "pickle" comes from the Dutch word "pekel" or the northern German word "pökel," both of which mean salt or brine. These two components are important in the pickling process, which has been used throughout history to safely preserve food. The fundamental difference between vinegar and lacto-fermented pickles is probiotics, or naturally occurring beneficial bacteria. Lacto-fermented pickles are full of probiotics, while vinegar pickles are sterile.



FERMENTED VEGETABLES

If you're curious about making probiotic krauts, kimchis, brined pickles, chutneys, relishes, and pastes, then I recommend "Fermented Vegetables" by Kirsten and Christopher Shockey. The first chapters take you through the fermentation fundamentals, covering the history, science and safe kitchen practices.

MASTERING THE BASICS AND BEYOND

In part two, you'll master the basics of sauerkraut, brine pickling, and kimchi with great visual guides. A to Z vegetable recipes and interviews with professionals divulging trade secrets are found throughout the book. Plus, inspiring and mouth watering photos, all in color.

The authors teach vegetable fermentation and it shows, because it's user friendly, making sure that the reader understands and will approach the process and recipes with confidence. I added it to my library in 2014 and use it frequently for inspiration and reference. The wonderful thing about lacto-fermentation is that you won't need to pressure cook anything, or make big batches. Instead, you can make small batches from garden or market produce.

WHY BOTHER WITH LACTO-FERMENTED PICKLES?

The wonderful thing

about lacto-fermentation is that you won't need to pressure cook anything, or make big batches. Instead, you can make small batches from garden or market produce. The complete process takes about three to five days to ferment, keeps for a year or more refrigerated, and with very little hands-on work.

The good guy probiotics in lacto-fermented pickles help to support a diverse and balanced gut flora, which is essential for digestion, nutrient absorption, and immune system regulation. In addition, lacto-fermented pickles provide micronutrients like vitamins K, C, and A.

Lacto-fermented krauts and pickles are expensive to buy, and making them yourself costs you only the produce, salt and time. It's easy to convert your favorite recipes, even bread and butter pickles!

Lacto-fermented brines are a culinary secret, used to create depth in soups. While homemade krauts are excellent in casseroles, with a roast, or as an element in savory pies. Kimchis makes wonderful pancakes, soups and brightens up a boring breakfast.

Sidonie Maroon, culinary educator for the Food Co-op

Ginger and Star Anise Pickled Carrot Sticks

MAKES A QUART AND A PINT OF PICKLES

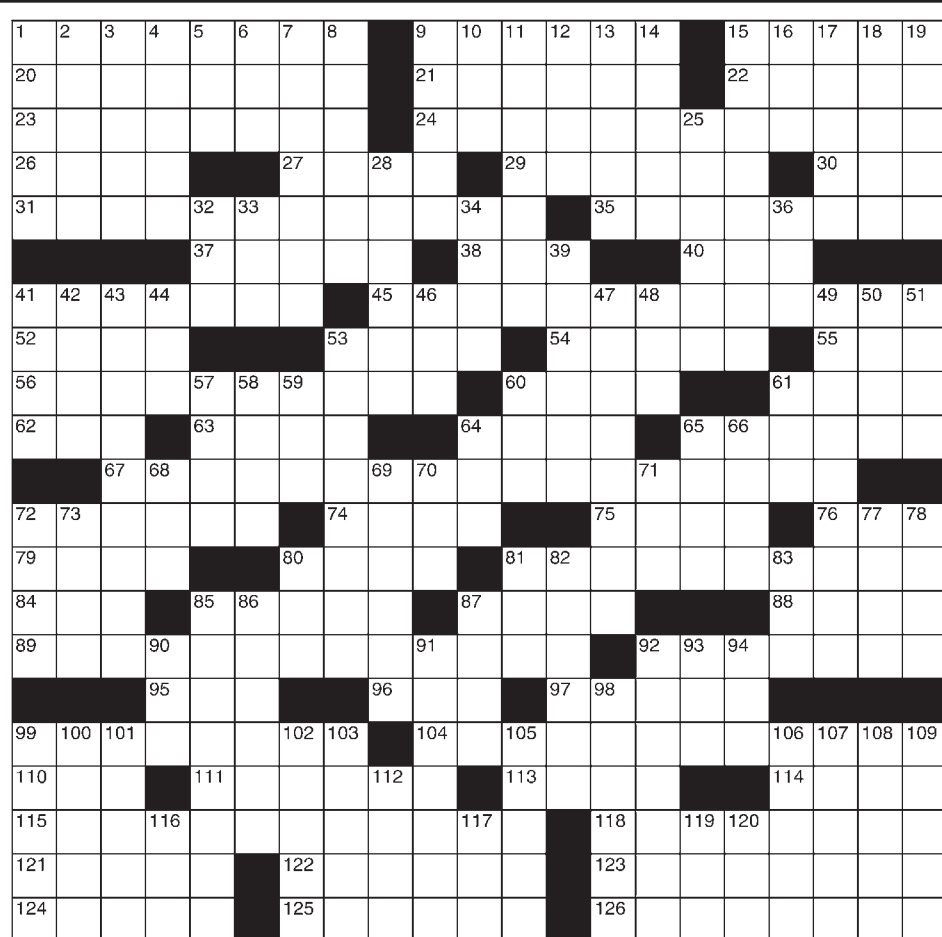
- 1 pound of fresh carrots, cut into thin sticks (no need to peel)
- 2 tablespoons of sea salt, I use "real salt" which is a USA pink salt
- 4 cups of filtered water, it's important that the water is chlorine free.
- 4 cloves of garlic, sliced
- 4 slices of fresh ginger, unpeeled
- 2 star anise

1. Wash the carrots, then cut them into thin snack-sized sticks.
2. Dissolve the sea salt in the filtered water to make a brine. The salty brine keeps the "bad" bacteria at bay while the acidic 'good' bacteria get a stronghold.
3. Pack the carrot sticks, garlic, star anise and ginger into clean jars.
4. Pour the brine over the vegetables, leaving 3-4 inches of head room. Make sure they are completely submerged. Use a pickle weight or smaller jelly jar pushed into the jar top to keep them under the brine. Set the pickles in a sided casserole in case of spills. As they begin to ferment the brine will often spill over.
5. Leave the jar at a cool room temperature for 2-7 days, depending on how sour you like your fermented vegetables. Check the jar daily to make sure the vegetables are still submerged under the brine. You will know they're ready when they taste more sour than salty.
6. When the carrots have reached your desired level of sourness, transfer the jar to the fridge to slow down the fermentation process. They are good to eat and will keep for a long time.

Super Crossword

SCALE MODELS

- ACROSS**
- 1 Bucolic
 - 9 Break away formally
 - 15 Lazes about
 - 20 Out of prison conditionally
 - 21 Brand of infant formula
 - 22 "— vincit amor" ("Love conquers all")
 - 23 Try to get the job done
 - 24 "The Grass Is Singing" novelist
 - 26 Falco of "Oz"
 - 27 Bonding stuff
 - 29 Peevish
 - 30 O or Elle, e.g.
 - 31 Original host of "Who Wants to Be a Millionaire"
 - 35 In a calm way
 - 37 Bellhop's employer
 - 38 Ultimate
 - 40 Actress Hagen
 - 41 They suffer for what they believe in
 - 45 First lady who wrote "American Growth"
 - 52 Self-confident declaration
 - 53 Zilch
 - 54 Ugly plants
 - 55 Stuff oozing down a trunk
 - 56 She sang "I'll Be Missing You" with Puff Daddy
 - 60 Skewed view
 - 61 Unicycle part
 - 62 Trout feature
 - 63 "— go brag"
 - 64 Makes taboo
 - 65 Sister chain of Marshalls
 - 67 Art collector who founded a Manhattan museum
 - 72 Daisy parts
 - 74 Nets or Nats
 - 75 Daily opinion page
 - 76 The Monkees' "— Believer"
 - 79 Since
 - 80 Like lingerie
 - 81 She played Kerry Weaver on "ER"
 - 84 Hertz offering
 - 85 Actress Keanan of "Step by Step"
 - 87 Transmitted
 - 88 This plus that
 - 89 George C. Scott's "Taps" co-star
 - 92 Certain stream of particles
 - 95 N, S, E or W
 - 96 — de mer
 - 97 Utility bill info
 - 99 Waifish supermodel
 - 104 Creator and star of FX's "Atlanta"
 - 110 Wall St. hedger
 - 111 Remove a collar from, e.g.
 - 113 Musk of SpaceX
 - 114 Co. transfer
 - 115 Luminaries like the eight featured in this puzzle? (hint: look at their first few letters)
 - 118 Took off on
 - 121 Pacific island nation
 - 122 Dubbed
 - 123 Greatness
 - 124 Some female singers
 - 125 Refuges
 - 126 Goes along with humbly
 - 1 Strength
 - 2 Battery pole
 - 3 Small shoot
 - 4 George who played Sulu
 - 5 Singer Rita
 - 6 Get decayed
 - 7 Touches down
 - 8 Leave alone
 - 9 Second half of a single
 - 10 "— Beso"
 - 11 City about 50 miles west of Athens
 - 12 Arab leader
 - 13 Casino chips, e.g.
 - 14 J.R. Ewing's mother
 - 15 California city near San Jose
 - 16 Meditation syllables
 - 17 Japanese cartoon art
 - 18 Ultimate
 - 19 Drooping
 - 25 Invested (with)
 - 28 Funny Tracey
 - 32 Timid
 - 33 "— favor"
 - 34 Old Andean
 - 36 Eatery bill
 - 39 Chopping with an ax
 - 41 Peevie
 - 42 Brazilian berry
 - 43 Cloudburst
 - 44 Blasting aid
 - 46 Passports, e.g.
 - 47 Rent
 - 48 The, in Paris
 - 49 Area south of the Black Sea
 - 50 Karl with a manifesto
 - 51 Zenith
 - 53 Manipulation of matter on a tiny scale
 - 57 Satan's home
 - 58 God of love
 - 59 Liveliness
 - 60 Satchel, e.g.
 - 61 "Eww, no more!", in texts
 - 64 Lazy type
 - 65 Ellington's "Take — Train"
 - 66 Yoda is one
 - 68 Klutzy type
 - 69 Medication for acid reflux
 - 70 Part of LGBT
 - 71 "Fresh Air" aier
 - 72 Postwar deal
 - 73 Morales of the screen
 - 77 Prefix with analysis
 - 78 Pallid
 - 80 Put in words
 - 81 Feline sign
 - 82 Occurring every year
 - 83 Clippers' org.
 - 85 Provocation
 - 86 Ruler's seat
 - 87 WWII battle city in France
 - 90 Pindar poem
 - 91 Frog-to-be
 - 92 Sullied reputation
 - 93 Yolk's place
 - 94 Business card no.
 - 98 Slanted
 - 99 Iota-lambda link
 - 100 "That's — shame"
 - 101 Fastening rod with a crosspiece
 - 102 Lazy type
 - 103 Bulgarian capital
 - 105 Essentials
 - 106 Arrangement
 - 107 Leaf features
 - 108 Vote in
 - 109 Roping event
 - 112 Being seen via the small screen
 - 116 Kung — shrimp
 - 117 Wallet bill
 - 119 Discharge from service, informally
 - 120 Wallet bill



©2023 King Features Syndicate, Inc. All rights reserved.

Walking Gallery returns to downtown

KIRK BOXLEITNER
KBOXLEITNER@PTLEADER.COM

After the success of the first Walking Gallery of artwork exhibited by 20 local creative artists on Aug. 5, organizers Thais Oliveira and the Raw Art Collective are inviting artists and onlookers alike to take part in Port Townsend's second Walking Gallery, from 4:30 p.m. to 6:30 p.m. on Saturday, Sept. 23, proceeding east on Water Street, from Rotary Park to Pope Marine Park.

Even as the Raw Art Collective credits Catalan artist Joe Puig with pioneering the Walking Gallery concept, fellow Port Townsend artist and Walking Gallery co-organizer Jen Cohen praised Oliveira's passion and inspiration for making this event possible.

"We share the same ethos of inclusivity, accessibility and interconnectivity," Cohen said.

"In a small town, everyone wears five different hats, but her leadership has been instrumental. Our first Walking Gallery brought folks out of the woodwork, including a few who hadn't been able to explore art to the degree they would have liked before."

Cohen acknowledged that "sometimes, it's too easy to feel like your art form might not have a forum. We have galleries in Port Townsend, but the process of exhibiting one's art there might feel intimidating to some, which is why we say everyone's welcome to come walk or roll with us."

Indeed, the Raw Art Collective, which describes itself as "an incubator that inspires creativity and community engagement through the arts," encourages creators to bring their art, in any medium, to be part of a moving "gallery without walls," including paintings, drawings, sculptures, jewelry, furniture, photographs, collages, written and spoken words and music.

Cohen said she would love to see more wearable art-makers, acrobatic performers and even jugglers represented, even as she reiterated that "all creatives are welcome" to join them, with "no paperwork, no competition, no elimination, no selection processes (and) no fees" required, as they gather at Rotary Park, starting at 4 p.m., to begin walking promptly at 4:30 p.m.

In keeping with the Walking Gallery's slogan of "art and artist as one," artists will be expected to either carry or wear their artwork, as they walk or roll together to Pope Marine Park, stopping at strategic points along their route to showcase their work to onlookers.



"It's been inspiring to see so many creative people come together, to celebrate and share their work in such a unique way," Cohen said. "When I saw the joy on the



The Walking Gallery returns from 4:30 p.m. to 6:30 p.m. on Saturday, Sept. 23, proceeding east on Water Street, from Rotary Park to Pope Marine Park. Photos courtesy of Julia Miles

faces of our onlookers on Aug. 5, it brought tears to my eyes. Creative self-expression is essential to our well-being, and opening it up to have no barriers, no creeds and no norms has a powerful impact."

To learn more about the Walking Gallery, or to RSVP to showcase your own creativity on Sept. 23, log onto the Raw Art Collective's event web page at rawartcollective.org/events/walkinggallery-september online.

And for further details about the Raw Art Collective's ongoing and upcoming events, including how to collaborate with them, follow the group's social media page at [instagram.com/therawartcollective](https://www.instagram.com/therawartcollective) or visit its rawartcollective.org website.

Cohen and Oliveira can also be reached via email at therawartcollective@gmail.com.

PORT TOWNSEND SYMPHONY ORCHESTRA

— TIGRAN ARAKELYAN | CONDUCTOR & ARTISTIC DIRECTOR —

PTSymphony.org



2023-2024 CONCERT DATES & PROGRAMS

Concerts are at 2 PM
Chimacum School Auditorium

CHAMBER MUSIC CONCERT

OCTOBER 14, 2023

Robert Schumann • Astor Piazzolla
Gerald Finzi • Franz Schubert

3 PM, Grace Lutheran Church,
Port Townsend

The concert is FREE, but because of limited space, reservations will be required. Further details and reservation information will be posted on PTSymphony.org on September 14.

SUNDAY, OCTOBER 29, 2023

Franz Schubert • Arturo Márquez
Karl Bach

SUNDAY, DECEMBER 3, 2023

Adrienne Albert • Leonard Bernstein
Frederick Delius • Josef Strauss
P. I. Tchaikovsky • Carl Reinecke

SUNDAY, FEBRUARY 25, 2024

William Grant Still • Alexander Borodin
W. A. Mozart

SUNDAY, APRIL 28, 2024

Klaus Badelt • Hans Zimmer
Giuseppe Verdi • Lin-Manuel Miranda
Stephen Bulla • W. A. Mozart

Concert programs subject to change.

2024 YOUNG ARTIST COMPETITION

April 20, 2024. Details will be posted on PTSymphony.org in October.



NOW PLAYING



OPEN 7 DAYS A WEEK!

MATINEES

Thurs, Fri, Sat, Sun

FREE

MEMBER POPCORN on Wednesdays!

FOR SHOWTIMES AND TICKETS go to rosetheatre.com

NOW SHOWING:

THEATRE CAMP Ends Thurs, 9/7

ASTEROID CITY Ends Thurs, 9/7

MIRACLE CLUB

THE EIGHT MOUNTAINS

UMBERTO ECO: A LIBRARY OF THE WORLD

STARTS FRIDAY:

LAKOTA NATION VS THE UNITED STATES Starts Fri, 9/8

SCRAPPER Starts Fri, 9/8

235 TAYLOR STREET, PORT TOWNSEND, WA 98368
ROSETHEATRE.COM
Movie Info: 360.385.1089
office@rosetheatre.com



Sandee Johnson. Leader photo by Carolyn Lewis

A studio visit with Sandee Johnson

When I first had the opportunity to visit Sandee in her home studio, I was not sure what to expect. I could tell from seeing some of her work that she must be very prolific. New and older pieces were being added to her website and Instagram daily — sometimes even multiple times a day. The work was incredibly varied, as were the materials and various mediums and techniques used. An accomplished photographer, Sandee also uses her work in many of her own photographs, especially in her pieces that focus on social commentary, nature, and the environment.

A visit to Sandee's studio is like a walk through a 45-year-plus career. Most of her lovely home is covered in her work, her various

collections. I wanted to take so many pictures, but that felt like an invasion of privacy so I would just have to store what I was seeing in my memory bank. There are amazing detailed collages, drawings, and paintings taken from nature, fabric, and sewing used in facilitating ways as well as experiments in cold wax, encaustic, and just about every other medium you can imagine. There are rooms filled with ephemera, a lot of which reflect her extensive travels in over 90 countries.

Sandee's studio initially looked like a jumble of beautiful and fascinating things but soon I realized that she is well aware of what and where things are. I realized that she has supplies for just about every

inspiration that might hit...at any time of day and night. If you explore Sandee's website, you will find that her work is divided into chapters. Each one is distinctly different and once again underscores the depth of her work.

While I marveled at Sandee's studio, we spoke a bit about what motivates her to create every single day and which media she most enjoys using.

Q: Do you have a favorite media to work with?

Sandee: I prefer working with mixed media instead of one single technique. This way my photography, drawings, printmaking, fiber/sewing, collage ephemera, paper making and encaustic monoprints can be combined with acrylic paints or mediums into one cohesive piece. Oil and cold wax has intrigued me for 12 years but my current studio space is too small for frequent exploration in terms of the mess I make with it.

Q: Do you ever experience a creative block? How do you handle that?

Sandee: I don't have creative blocks though at times life gets in the way. I'm most happy when I'm working on many creations



Sandee Johnson's studio. Leader photo by Carolyn Lewis

at the same time. My downstairs workspace is loosely divided into activity stations so I can move from one series or techniques to the next. One for inks and watercolor, an etching press for printing, a space for collaging and two areas for painting. Upstairs I often push the limits of my husband's patience: figurative and abstract drawings in addition to writing are often done in a lounge chair. The dining room table is usually piled with multiple projects. Basically I live in a whirlwind of creativity and that can cause insomnia.

Q: How have your extensive travels influenced your work?

Sandee: After living all over the globe, particularly in Europe, the Orient and South America, I have had difficulties adjusting to the American art world. Though some of my works have commercial appeal, I also like to explore the weird side of life, specifically with creating theatrical photographic personalities. Yet I'm always inspired by nature so living in Port Townsend makes that a centerpiece of recent work.

Q: It sounds like you have had some amazing adventures in art. Do any stand out in particular?

Sandee: I've had the most adventures with art while living 20 years in Belgium, France, and Germany. From participating in a "Burial of Art" in Berlin, complete with a black wooden coffin and police outnumbering the artists to an auction of my selected painting in Hotel George V in Paris, it has been anything but boring. I never thought I'd have several hours to explore the Hermitage in St.

Petersburg, Russia while it was closed to the public or have a one-woman show Moscow. Perhaps one of my most unusual experiences involved the selection of a painting over all the French submissions. It was lashed to the prow of a sailboat during the huge gypsy celebration in Saintes-Maries-de-la-Mer, and navigated by the French sailor Florence Arthaud (who sailed around the world in 2007), ending up in Jaffa, Israel as part of a peace initiative. Imagine my shock when the artwork ended up being featured in "Femme Actuelle" and "Paris Match" along with Sarah Jessica Parker, Hillary Clinton, and the French heartthrob Johnny Hallyday!

Q: Is your work a part of any show currently?

Sandee: This fall I've got work showing internationally in Belgium, France, and Argentina. Locally I have pieces in Bainbridge Arts and Crafts Gallery and Aurora Loop Gallery in Port Townsend. I'm also focusing on adding hundreds of artworks to my website www.sandeejohnson.net which also serves as an inventory. Like many artists, the business portion of being an artist is my kryptonite.

If you have the opportunity to visit with Sandee in person or to view her work be sure to do so. I truly enjoyed my visit to her studio and I am sure you would too. Seeing an artist's personal work space is a special treat, and at least for me, changes how one looks at the work.

Carolyn Lewis is a serial entrepreneur, artist and community builder happily living and working in Port Townsend. Visit her Facebook group at Port Townsend Life or on Instagram @carolynnelewis

Interested in improving local senior services?

The Olympic Area Agency on Aging (O3A) is recruiting **volunteers** to serve on its Advisory Council (AC) board. O3A coordinates aging and long-term care services for seniors and adults with disabilities in Clallam, Jefferson, Grays Harbor and Pacific counties. AC members participate in legislative advocacy for funding & programs, review O3A program allocations, provide input on agency long-range planning, etc. Current vacancies include Jefferson County Representative, Pacific County Representative and a Tribal, Disability, and Elected Official Representatives. Monthly AC meetings are on 3rd Tuesdays via Zoom with in-person options.

Contact: Ingrid.henden@dshs.wa.gov or 360-207-1025 • www.o3a.org



Edward Jones

edwardjones.com | Member SIPC

Compare our CD Rates

Bank-issued, FDIC-insured

6-month	5.30 % APY*	1-year	5.35 % APY*	2-year	5.05 % APY*
----------------	--------------------	---------------	--------------------	---------------	--------------------

Call or visit your local financial advisor today.



Makayla J Overstreet
Financial Advisor
2500 W Sims Way Ste 202
Port Townsend, WA 98368
360-385-2243

* Annual Percentage Yield (APY) effective 08/31/2023. CDs offered by Edward Jones are bank-issued and FDIC-insured up to \$250,000 (principal and interest accrued but not yet paid) per depositor, per insured depository institution, for each account ownership category. Please visit www.fdic.gov or contact your financial advisor for additional information. Subject to availability and price change. CD values are subject to interest rate risk such that when interest rates rise, the prices of CDs can decrease. If CDs are sold prior to maturity, the investor can lose principal value. FDIC insurance does not cover losses in market value. Early withdrawal may not be permitted. Yields quoted are net of all commissions. CDs require the distribution of interest and do not allow interest to compound. CDs offered through Edward Jones are issued by banks and thrifts nationwide. All CDs sold by Edward Jones are registered with the Depository Trust Corp. (DTC).

FDI-18671-A © 2022 EDWARD D. JONES & CO., L.P. ALL RIGHTS RESERVED. AECSPAD

Welcome to the Wild Side!

Olympic Game Farm
Est. 1972

Open daily

1423 Ward Rd, Sequim • OlyGameFarm.com • 360 683-4295

Sorry, but no outside bread. Bread available for purchase on-site.

Chorus calls all singers

LYNN NOWAK
SPECIAL TO THE LEADER

For those who have a hankering to sing, the Community Chorus of Port Townsend and East Jefferson County wants you.

As the group gears up for its holiday season, the chorus board of directors and its fall director, Sarah Moran, are calling all singers.

Winter concerts are set for Dec. 8 and 9, with rehearsals beginning Sunday, Sept. 10. Registration starts at 5:30 p.m. Singing is 6:30 p.m. to 8:30 p.m. that night, and Sundays thereafter, at Grace Lutheran Church, 1120 Walker St., Port Townsend.

Cost is \$35 and scholarships are made available if participants need one.

Moran has selected three classical pieces by John Rutter for the first half of her program. They include "Te Deum," "Gloria," and "Magnificat." Moran rounds out the program with a variety of holiday-themed music.

"The fall program brings some new pieces and some great seasonal favorites for the audience to enjoy," noted chorus president Linda Atkins.

"We want to invite men and women of all ages to join us," Atkins continued. Anyone aged 16 and up is welcome, and no auditions are required. Atkins and other members of the board explained that to do the music justice, it's important to get a balance of singers in all voice parts: soprano, alto, tenor, and bass.

Men's voices are usually in shorter supply in the chorus, so any men who think they might like to give the chorus a try are definitely encouraged to do so.

"It is exciting to see the chorus rebuilding after the recent challenges we have all faced," Atkins said.

"Singing brings such a powerful connection with our



Sarah Moran rehearses the Community Chorus of Port Townsend and East Jefferson County in fall 2022. Courtesy photo

community and is so darn fun. I love that the chorus welcomes all singers, even those, who like me, hadn't sung for many, many years."

In fact, one of the missions of the chorus is to assist people in returning to choral singing, whether or not they've sung since high school or college.

"We offer many opportunities to improve our skills and build back the voice," Atkins added.

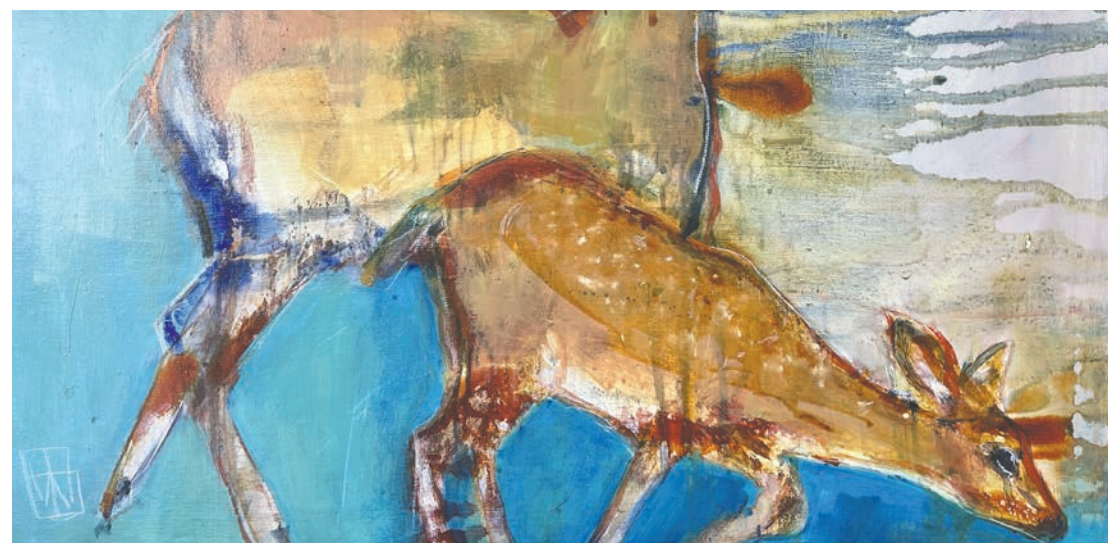
She said that singalongs are among her favorite facets of the holiday program, so that the audience also can participate

in the music.

"We love for everyone to sing!"

The chorus board of directors has determined that proof of COVID vaccination will be required this season and is now studying the most up-to-date recommendations from the CDC and Jefferson County Public Health to determine whether masking will be optional or required.

For inquiries about masking requirements, and all other questions, visit ptchorus.org, call 360-643-3345, or visit the group on social media.



Lisa Whitwell is a Pacific Northwest painter who celebrates a love for all things earthly. Her work will be on display at Elevated Ice Cream throughout the month of September. Photo courtesy of Lisa Whitwell

Elevated Ice Cream to host art show

Come savor the flavors of four of Port Townsend's female artists at Elevated Ice Cream during the month of September.

Nancy Lucas Williams creates classical portraits, still-lives, landscapes, and biblical narrative paintings. She is the founder of The Masters Atelier, where she teaches the fundamentals of painting and drawing in tradition of the "Old Masters."

Artist and award-winning children's book author and illustrator Corinne Humphrey creates bold, whimsical paintings highlighting universal themes inspired by her rescue dogs Ruby and Adobe. "I paint myself to make myself happy, to spread joy, providing an antidote to the stresses of today's world with 'pawsitive' messages and vibrant

colors," she said.

Lisa Whitwell is a Pacific Northwest painter who celebrates a love for all things earthly. "Citizens and denizens in their natural habitats are the dominant theme of her work," said Williams in an email to The Leader.

Finally, Amanda Stone, who fell in love with stained glass as a teenager, has been creating art pieces in this "challenging and unique" medium for the past 30 years. As a recent transplant to Port Townsend, she noted how delighted she is to bring stained glass restorations, repairs, and custom work to serve the needs of her new community.

These artists' work will be on display at the ice cream shop until Sept. 30.

MOONFEST Schedule of Events

LAKE LELAND AMPHITHEATER - QUILCENE, WA

FRIDAY, SEPT 8

- 9:00 AM • FRONT GATE OPENS
- 5:00 PM • DRUM CIRCLE WITH WAKINDA ROSE
- 6:00 - 7:30 • BROTHER TOWNSEND
- 8:00 - 9:30 • POLLY O'KEARY AND THE RHYTHM METHOD
- 9:30 - 10:00 • FIRE SPINNERS
- 10:00 - 11:30 • TOO SLIM & THE TAIL DRAGGERS

SATURDAY, SEPT 9

- 9:00 AM • FRONT GATE OPENS
- GUEST SPEAKERS:
- 10:30 - 11:30 • DUCKABUSH MUSHROOMS PRESENTS LIONS MANE
- 11:30 - 12:30 • P.T. PSYCHEDELIC SOCIETY PRESENTS MICRODOSING
- 1:00 PM • CAR SHOW
- 12:30- 2:00 • MONSTER ROAD
- 2:30 - 3:30 • HEAVILY DISHEVELED
- 4:00 - 5:30 • JANIS LIVES
- 6:00-7:30 • SIRENS OF THE WOOD
- 8:00 - 9:30 • DARING GREATLY BAND
- 9:30-10:00 • SHULA AZHAR-(BELLY DANCERS)
- 10:00-11:30 • YESTODAY

BUSINESS PAGE

SUNRISE COFFEE COMPANY
Your Local Coffee Roaster
In Port Townsend Since 1985
Sunrise CoffeeHouse ~ In The Port
360-385-4117 ~ SUNRISECOFFEE.NET
Walk - Ins Welcome ~ Fresh ~ Local ~ Organic

CYNTHIA KOAN
COMPUTER COACH & TECHNICIAN
MICROSOFT CERTIFIED

Smart phones not working? Tuneup Laptops Internet TVs
Blu-ray dumb phones REMOTE HELPDESK
Computers hardware headsets
Online backups home office
coaching suggest me Google Apps, Microsoft Access
cellular wireless printers servers
REPAIR Excel security Networking
WiFi cloud Quickbooks just fix it
Freelancers IT iPad Learn *APP*
Internet Refrigerators tablets

GOT TECHNOLOGY?

SCHEDULE ONLINE AT
WWW.SCHEDULECYNTHIA.COM
OR CALL
360-385-4234

Bergstrom's Sewing Machines
Sales & Repair of Non-Computerized Sewing Machines
Since 1968 😊

Call **360-385-5050**
to schedule
drop-off at
Creative Union Fabrics
112 Kala Square Place Suite 3 • Port Townsend

LEVEL UP YOUR FUN!
Anime/Manga • Card Games
Board Games • Video Games

Buy, Sell, Trade!
Events and more!

114 W 1st
Port Angeles
ANIME-KAT
www.AnimeKat.com • 360-797-1313

NEST HERE.
PTLEADER.COM

The Wine Seller Est. 1982

WINE • BEER • BUBBLIES
CIDER • CHEESE/DELI
CHOCOLATES & more!
Stop in Today - MIX-A-CASE
• Open 7 days a week •

1010 WATER STREET, PORT TOWNSEND
360-385-7673
www.PTwineSeller.com Follow Us! f

VELO CATS COLLECTIVE
Worker-owned bike shop

FULL SERVICE
REPAIRS

NEW & USED BIKES

CUSTOM WORK

360 . 344 . 2448

Tues - Sat 12 - 6PM -- 1929 W Sims Way, PT

Spirits BAR & GRILL at the OLD ALCOHOL PLANT

- GARDEN TO TABLE FARE
- AMAZING BAY VIEWS
- SERVING OUR COMMUNITY

310 Hadlock Bay Road | Port Hadlock, WA 98339
360-302-6348 | www.oldalcoholplant.com

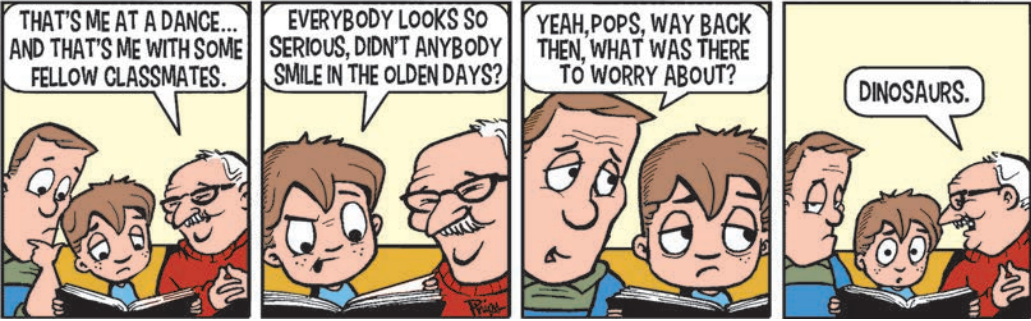
COME SEW

Private Studio • Lessons • Equipment Use
- Free of charge -
Wed - Sat 1-5 by appt.

810 Water Street, Suite 2, Port Townsend
comesew.com 360-344-2079

Amber Waves

by Dave T. Phipps



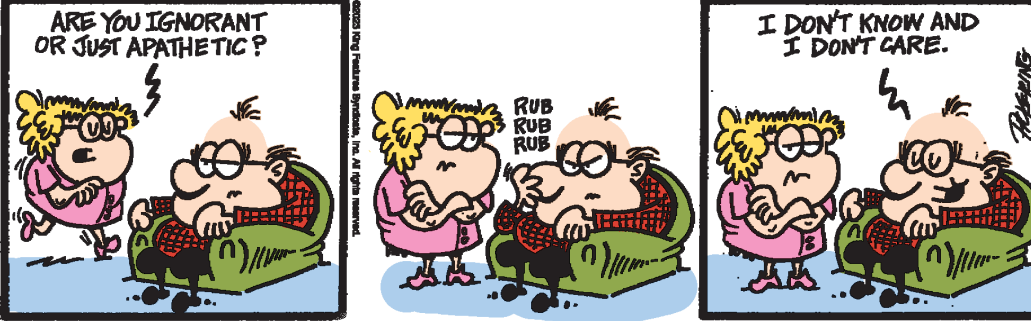
Out on a Limb

by Gary Kopervas



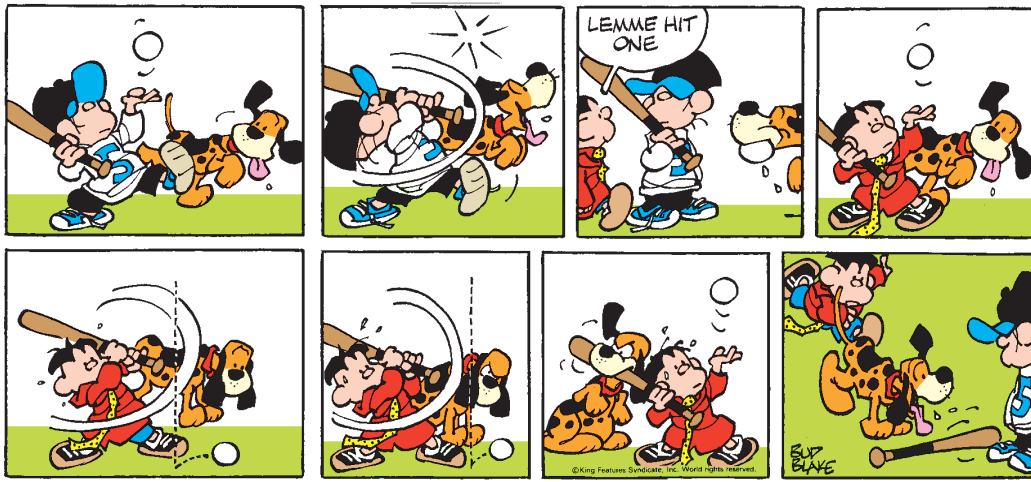
The Spats

by Jeff Pickering



TIGER

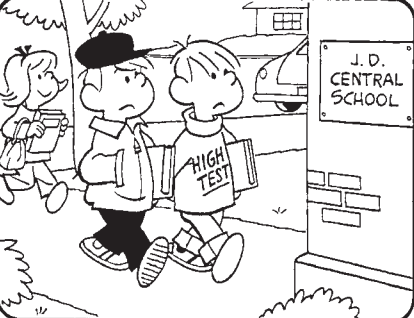
by BUD BLAKE



GRIN and BEAR IT

HOCUS-FOCUS

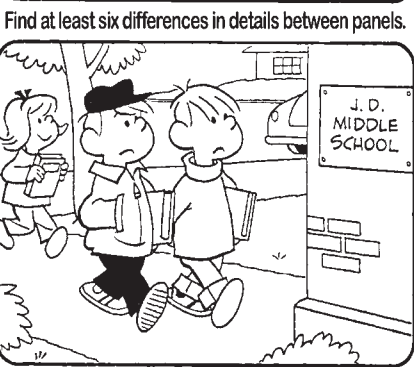
BY HENRY BOLTINGOFF



"Have you ever seen a credit card melt?"

Just Like Cats & Dogs

by Dave T. Phipps



Differences: 1. Purse is moved. 2. Cap is missing. 3. Cap is missing. 4. Book is moved. 5. Car is moved. 6. School name is missing. 7. Sweater words are missing.

CryptoQuip

This is a simple substitution cipher in which each letter used stands for another. If you think that X equals O, it will equal O throughout the puzzle. Solution is accomplished by trial and error.

Clue: O equals P

BD XSW EOOJX E FCERBMT OEQ
RS EM ENFC DSG E ZGBCD
OCGBSQ, BR NSWJQ ZC E RHS-
ABMWRC HEGABMT.

©2023 King Features Synd., Inc.

SCRAMBLERS

Unscramble the letters within each rectangle to form four ordinary words. Then rearrange the boxed letters to form the mystery word, which will complete the gag!

Balance **TRIPAY** _____

Plan **JETCORP** _____

Stare **GROWEL** _____

Avoid **REGION** _____

TODAY'S WORD _____

"Fifth floor, _____ Department — watch your step ... SIR"

STAN SMITH'S TENNIS CLASS

RETURN AND VOLLEY

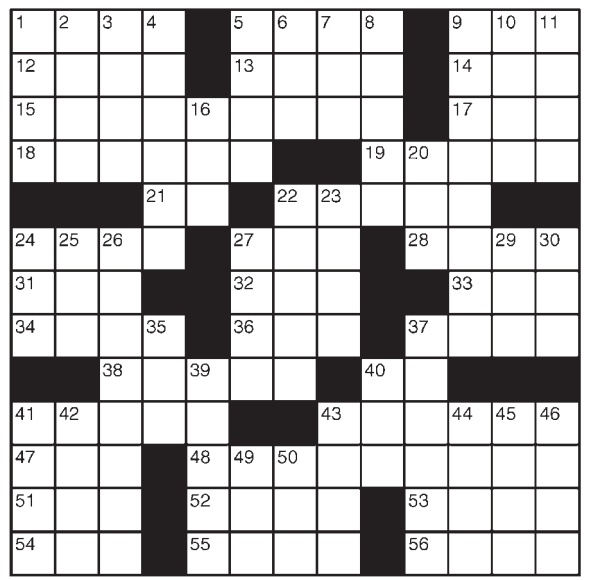
One way to take control of the point is to hit the return of serve and come to the net. This is a risky strategy, but if you hit the ball deep into the court, the opponent should not be able to hurt you with the passing shot. If you come in, do so quickly — any hesitation will put you in the wrong position to hit the volley.

if you do not hit the return deep into the court, it is better not to come to the net and instead move toward the center of the baseline and prepare for a groundstroke. If your opponent hits a short shot, then move forward.

King Crossword

ACROSS

- 1 Martial art
- 5 Smack a baseball
- 9 Romance
- 12 Abbr. on a phone
- 13 Sunscreen additive
- 14 "Big Blue"
- 15 Royal with a golden touch
- 17 Actress Vardalos
- 18 Naval rank
- 19 Avid
- 21 Hosp. triage area
- 22 Parsley and sage
- 24 Stately trees
- 27 Candle dripping
- 28 Incite
- 31 Luau souvenir
- 32 Glamorous Gardner
- 33 Santa — winds
- 34 Ward (off)
- 36 Tiara sparkler
- 37 Winter blanket
- 38 Accepted fact
- 40 "I see"
- 41 Flood protection
- 43 Cloth
- 47 Coach Parseghian
- 48 Cell phone



- 9 Airplane meal
 - 10 Theater award
 - 11 Sharif of "Funny Girl"
 - 16 Ball club VIP
 - 20 Six-pack muscles
 - 22 Refuge
 - 23 Pre-diploma hurdle
 - 24 Sprite
 - 25 Grant's foe
 - 26 Prized Chinese vessel
 - 27 Carry on
 - 29 Popular card game
 - 30 Cold and damp
 - 35 Conk out
 - 37 Hide from view
 - 39 Action words
 - 40 Busy insect
 - 41 Young fellows
 - 42 New York canal
 - 43 Early birds?
 - 44 Formerly
 - 45 Phone inventor
 - 46 Actor Morales
 - 49 401(k) alternative
 - 50 Aye canceler
- © 2023 King Features Synd., Inc.

Weekly SUDOKU

by Linda Thistle

9				8		2		
		7	3				8	6
	8			2		1		
		1			3		5	
	6			4				3
4			8			7		
		2		3				1
	1				5		3	
5			2		4	6		

Place a number in the empty boxes in such a way that each row across, each column down and each small 9-box square contains all of the numbers from one to nine.

DIFFICULTY THIS WEEK: ♦♦

♦ Moderate ♦♦ Challenging
♦♦♦ HOO BOY!

© 2023 King Features Synd., Inc.

Trivia test

by Fifi Rodriguez

- FOOD & DRINK: What does the acronym "IPA" stand for in a beer?
- LITERATURE: Who is the author of "The Hunger Games" series?
- U.S. STATES: Which state has the most lighthouses?
- GEOGRAPHY: What is the capital of New Zealand?
- GAMES: What is a perfect score in bowling?
- SCIENCE: What does an auxanometer measure?
- ANIMAL KINGDOM: What is a female donkey called?
- MOVIES: Which holiday is celebrated at the end of "When Harry Met Sally"?
- TELEVISION: Which entertainer has hosted "Saturday Night Live" the most?
- ANATOMY: What is the anatomical name for the kneecap?

Answers:
1. India Pale Ale.
2. Suzanne Collins.
3. Michigan.
4. Wellington.
5. 300 points.
6. Plant growth.
7. A jenny.
8. New Year's Eve.
9. Actor Alec Baldwin, 17 times.
10. Patella.

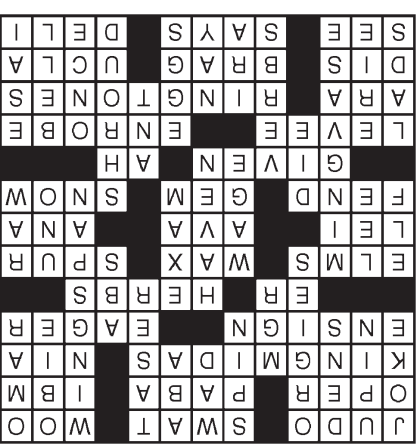
WORD LADDERS

Can you go from THREE to HYPED in 6 words? Change one letter for each rung in the ladder.

THREE

HYPED

© 2023 King Features Synd., Inc.



Solution time: 25 mins.

Answers

King Crossword

SCRAMBLERS

Today's Word

1. Party 2. Project
3. Glow 4. Ignore

TAPED, TYPED, HYPED
THREE, THRED, TARED

Answer

WORD LADDER

CryptoQuip

Answers

WORD LADDER

TAKE THIS SPACE!

Advertise with The Leader today!

360-385-2900

ADOPT A PET

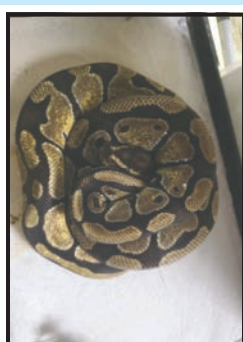


CENTER VALLEY ANIMAL RESCUE



Horse
Kindly sponsored by Grace, in memory of Oliver Thomas & Johnson Ellsworth.
Center Valley Animal Rescue

Isabel



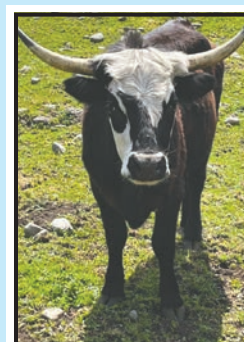
Snake
Kindly sponsored by Mary Harrison, in memory of Fritz.
Center Valley Animal Rescue

Stephine



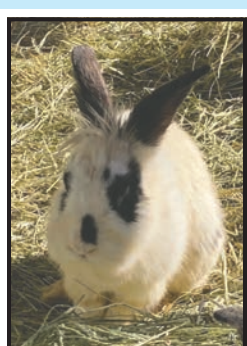
Gecko
Kindly sponsored by Steve & Donna Hengeveld, in memory of Hannah.
Center Valley Animal Rescue

Edward



Cow
Kindly sponsored by Lee & Virginia Kitchel, in memory of Annie.
Center Valley Animal Rescue

Dandelion



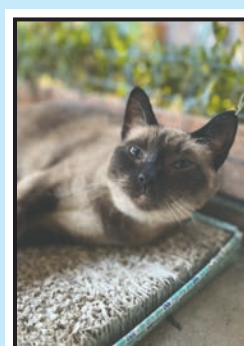
Rabbit
Kindly sponsored by Steven Lafleur, in memory of Rufus.
Center Valley Animal Rescue

Panda Bun



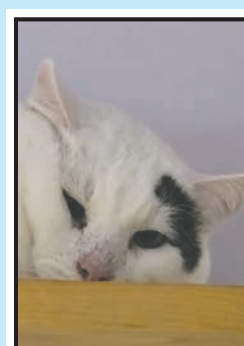
Pig
Kindly sponsored by Jane & David Lambkin, in memory of Ziggy Stardust.
Center Valley Animal Rescue

Charles



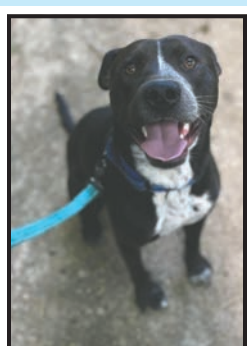
Cat
Kindly sponsored by Larry, in memory of Peter Mercer.
Center Valley Animal Rescue

Sasha



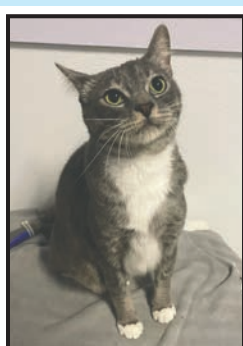
Cat
Kindly sponsored by John & Joyce Mottola, in memory of Olive & Spenser.
Center Valley Animal Rescue

Apawlo



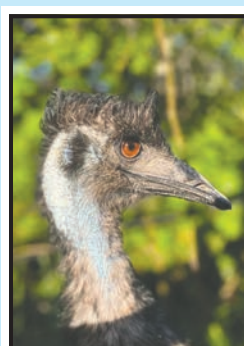
Dog
Kindly sponsored by Cherie, in memory of all the cats and the guy I loved.
Center Valley Animal Rescue

Ralphie



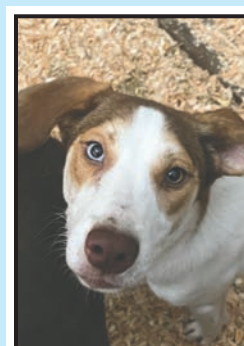
Cat
Kindly sponsored by Rhonda & Steven Scharf, in memory of my horse Jasmine.
Center Valley Animal Rescue

Jaspurr



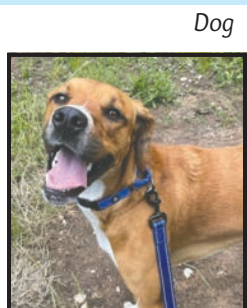
Emu
Kindly sponsored by Jason & David Bellecci-Serinus, in honor of their 3 beloved stray "Terrorers."
Center Valley Animal Rescue

Toad



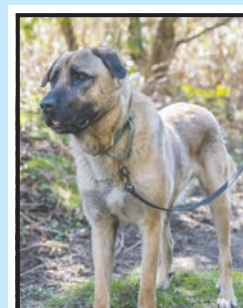
Dog
Kindly sponsored by Glora Sutton, in memory of Bootsie.
Humane Society of Jefferson County

Poppy



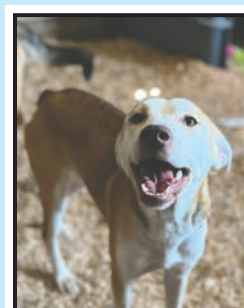
Dog
Kindly sponsored by Elaine Swindahl, in memory of Butch & Molly.
Center Valley Animal Rescue

Max



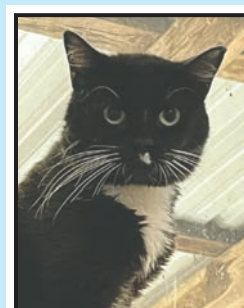
Dog
Kindly sponsored by Three Howling Dogs LLC, in memory of Zen.
Humane Society of Jefferson County

Hudson



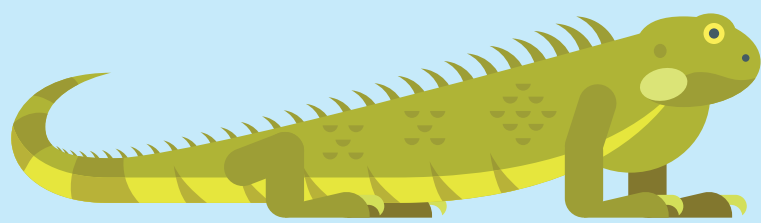
Dog
Kindly sponsored by Three Howling Dogs LLC, in memory of Smuckers, Checkers, & Mom.
Humane Society of Jefferson County

Smiley

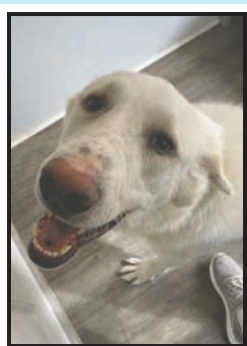


Cat
Kindly sponsored by Wendy Webber, in memory of Tasha.
Humane Society of Jefferson County

Atticus



HUMANE SOCIETY OF JEFFERSON COUNTY



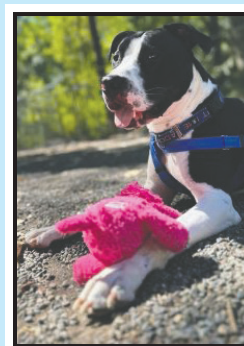
Dog
Kindly sponsored by Wendy Webber, in memory of Tasha.
Humane Society of Jefferson County

Delilah



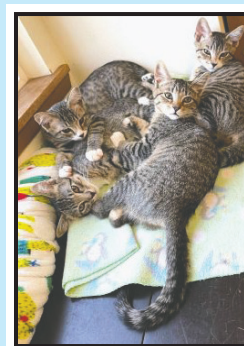
Chinchilla
Kindly sponsored by Kristina Wilkening, in memory of John & Sue Estes
Humane Society of Jefferson County

Eden



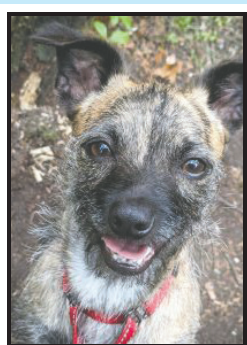
Dog
Kindly sponsored by Jill, in memory of Charmé.
Humane Society of Jefferson County

Victor



Cat
Kindly sponsored by Donna Frosthalm.
Humane Society of Jefferson County

Eve



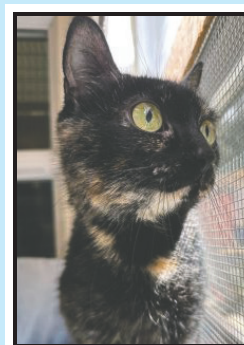
Dog
Kindly sponsored by Robert & Barbara Gray, in memory of Indie Walden.
Humane Society of Jefferson County

Mauricio



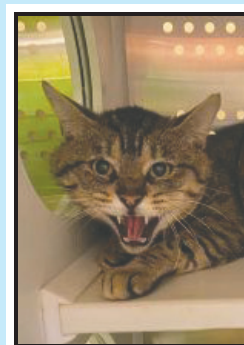
Dog
Dudley, Mauricio, Victor.
Humane Society of Jefferson County

Dudley



Cat
Kindly sponsored by Scott Matthews.
Humane Society of Jefferson County

Quinn



Cats
Kindly sponsored by Scott Matthews.
Humane Society of Jefferson County

Barn Cats

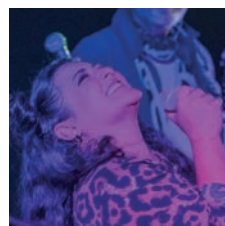


Farm brings food to table

Sunday, Sept. 3, Jefferson County Farmers Market hosted its second annual fund raiser at White Lotus Farms in the Chimacum Valley. Guests were given tours of the farm and fed a farm-to-table meal by Executive Chef, Dan Ratigan. (Above) Volunteers in the Bar Car watch executive director, Amanda Millholand speak at the event. Leader photo by Lloyd Mullen

Canceled concert revived

After days of downpour, the final Concert on the Docks was canceled Wednesday night. Within the next 18 hours, Kevin Mason and friends were able to secure a venue, the American Legion building, a bar, sound equipment, and a band. Right: Kevin Mason and the PT Allstars perform at the American Legion in downtown Port Townsend. Leader photos by Steve Mullensky



OBITUARIES

Bruce Edward Travis

MARCH 13, 1936 - JULY 23, 2023

Bruce Edward Travis, husband, father, grandfather and friend passed away July 23, 2023. Recently he celebrated 60 years of marriage to Jeanette L. Travis. He was a faithful family man with three kids Jason, Jennifer and Danielle.



He was born on a kitchen table in Kingston, Wash. Mar. 13, 1936, foreshadowing a life of an extraordinary and unconventional individualist. Bruce was an honest man with a big heart, a singular wit and integrity. He once said "The strongest thing a person can do is ask for help"

Bruce and wife Jeanette moved to Marrowstone Island in 1974 and together built their dream house and farm. Even though he had one arm, he never let that stop him. When building their house, he routinely carried roofing timbers to the top of the ladder, one-handed. He was unstoppable. His mechanical arm ended in a hook and kids often asked if he was a pirate. So, he would raise his hand and say "arrggghh"! He loved to help teach kids and was a leader in Cub Scouts and Boy Scouts.

Bruce loved learning and never stopped. After Everett High School, he earned an AA at Everett Community College and a BA at Pasadena Playhouse acting, directing and writing. Bruce loved literature and often read multiple books at a time. His immense book collection would have made a library proud.

Bruce had diverse career paths. After serving as an embassy Marine in Ghana, Africa, he retired a disabled Veteran at the rank of Sergeant. He was a teacher and grant writer at Everett Community College. He was also a Jefferson County building inspector.

Bruce was a faithful man, a Presbyterian Deacon and also co-directed Stephen Ministry with his wife. One of his proudest achievements was helping to co-found ECHHO with his wife and their friend Shirley Champion. He saw a need in our community and worked for a solution.

Bruce will be laid to rest at Tahoma National Veterans Cemetery 3 p.m. Sept. 22, graveside. A memorial will be held at the Port Townsend Presbyterian Church, 2 p.m. Oct. 15 in the sanctuary.

MEMORIAL

Karen Janice Rose

JUNE 14, 1945 - DECEMBER 6, 2022

A celebration of life will be hosted by the Bazaar Girls Yarn Shop and Fibre Emporium at 1 p.m. on Sept. 8 in Brigid's Loft (above the yarn shop), 280 Quincy Street, Port Townsend.

There will be food and time to share stories with the family.

CUSTOMER APPRECIATION

CHS would like to Thank our Customers!

25% off anything you can fit in the bucket!



CHS
NORTHWEST
Farm & Home

SATURDAY 9/16 ONLY!

DOORBUSTER DEALS!

9/6 - 9/17 packed with Doorbuster Deals!

chsnw.com



Double Rewards on ALL items advertised during this sale.

CHS
NORTHWEST
FARM & HOME



UNFINISHED VICTORIAN ON TOP OF 900 sq ft SHOP

Shipwright built to last. Bordering nature park mere blocks from Boat Haven, stores, food and transportation hub.

Blue Herons, privacy and views galore!

\$697,500 MLS# 2974739 JLS# 41497

Michael Morrow 360-774-1013

John L. Scott

OBITUARIES

Victoria Feitner McKinnon

JUNE 15, 1953 - AUGUST 23, 2023

Victoria Feitner McKinnon, 70, of Port Townsend, passed peacefully on Aug. 23, 2023 after a heroic fight against cancer.

Victoria was born June 15, 1953, in Long Island, NY, and is the daughter of the late Quentin and Judith Feitner. Although she was born on the east coast and always carried a bit of that in her personality, Victoria was drawn west to Montana where she attended University of Montana in Missoula. She achieved a BA in Elementary and Special Education before relocating to the Port Townsend area in 1975.

During her time in Port Townsend, Victoria owned Waterfront Naturals on Water Street, was a guardian ad litem for children in the Jefferson County courts, and served as a mediator and respite foster parent for Child Protective Services and Kitsap Mental Health Services.

She spent time volunteering for the Port Townsend Food Bank, served on multiple boards within Port Townsend, and took an active role in mentoring young women in the Jefferson County jail. Her greatest joys in life included helping others, gardening, music, fashion, her two children, and most recently, her grandchildren.

Victoria is survived by her daughter, Elizabeth Feitner Thomas, and her two grandchildren, Emerson Feitner Thomas and Sawyer Scott Thomas. She was preceded by her brother, Quentin Field Feitner III, and this past February, her son Seamus Paco Sims.

Victoria will be remembered for her quick wit, spitfire love, infectious laugh, and deep care and curiosity for humanity. She was truly one of a kind.

A celebration of Victoria's life will take place next summer in her place of solace, Flathead Lake, Montana.

Memorial contributions and donations in honor of Victoria may be sent to Fred Hutch Cancer Center for their continued research and fight against cancer.



Mary Elizabeth Greenwood Mason

MARCH 16, 1953 - MARCH 16, 2023

"I promise you there is something worse out there than being sad, and that's being alone and being sad. Ain't no one in this room alone." — Ted Lasso

Meg Mason was born Mary Elizabeth Greenwood in New York, NY on Mar. 16, 1953. She passed away on her 70th birthday, Mar. 16, 2023, at her home in Port Townsend.

After a diagnosis of stage four esophageal cancer in August 2022, Meg maintained her sense of humor and positive spirit up to the end, despite the toll the cancer took on her physically.

She was so many things – someone who wholeheartedly did anything for those she cared about; a visionary creator who joyfully remembered her first teacher telling her she had the hands of an artist; an animal lover with devoted dogs; an equestrian; a rough water swimmer – no water was too extreme or too cold; an exceptional cook; a strong-willed, competitive, hardworking and fun-loving woman.

She always had a project and a checklist she was working on and would rope everyone around her into joining. She seemingly had endless amounts of energy and was continuously and joyously helping others, designing and working in her garden and beloved house, or spending time with her many close friends.

She would help finish the first bottle of wine and encourage you to open the second. She was a card shark who liked to win, and usually did. She was a nature lover with bird feeders at every window. She loved to laugh and make others around her laugh and take themselves a little less seriously.

Meg loved nothing more than being a mom and she was amazing at it. When her two daughters, Laura and Andrea, were young, she devoted her time and energy into having fun with and supporting them. As young kids she would take them on beach adventures, do art projects with them, and support them as they grew up riding horses. As adults, they remained very close and all loved to spend time together.

Esophageal cancer took away her ability to eat and enjoy food in the last few months of her life. She wanted nothing more than to be able to sit down to a lovingly prepared, delicious meal with her favorite people. She would quip about why she had to have a form of cancer that prevented her from eating when there were so many other illnesses she could have been diagnosed with that would still allow that pleasure. She would want all of us to enjoy and savor our favorite meal and to think of her.

She tackled her last months with the thorough tenacity she brought to the rest of her life. She enjoyed all the moments she could with those she loved and continued to do projects and help others around her up until her body rendered her unable. Her final days were still filled with "Meg jokes" and requests to be wheeled in front of the fridge so she could look at the food inside and imagine eating it.

She watched the first episode of the newest Ted Lasso season (twice), a show she loved so very much. It felt disorienting to be laughing amidst the weight of knowing she would be gone soon, but that is who she was and how she wanted it to be and one of the many things we miss about her.

She is remembered and deeply missed by her two daughters and their father, Doug Mason, her son-in-law, four brothers: Chris and Tom Greenwood and Archie and Bill Merwin, her sister Stancy Merwin, nieces and nephews, countless friends and a community she loved so much, and in turn loved her.



Consuelo Aduviso Brennan

SEPTEMBER 25, 1965 - AUGUST 9, 2023

Consuelo Aduviso Brennan passed away on Aug. 9 at Harborview Medical Center in Seattle after suffering a stroke in July. Consuelo was a beloved wife, mother, daughter, sister, teacher, director, actor, and friend. She was born on Sept. 25, 1965, in Jacksonville, Flor. to Don and Aurora Aduviso. She was raised in Hayward, Calif., and studied at Tennon High School, Chabot College, California State University-Hayward, and the Professional Actors Conservatory in Orange County, Calif. Her main passions were her family and the theater. She met her husband Marshall in Los Angeles in 1993 and they married in November of 1999. Consuelo gave birth to Tiburcio Joseph Brennan in August 2000. The family moved to Port Townsend in 2004.

Consuelo's professional acting career included performing on stage and in film in Los Angeles, Seattle, Portland, and Port Townsend. She was a member of the Actors Equity Association and the Screen Actors Guild. Consuelo appeared in many "industrial" films and was also in commercials, television shows and several independent films. She acted in many local theater productions with Key City Public Theater and the Paradise Theater School.

For the last 12 years, Consuelo has also been a teacher with the Olympic Home School Connection with the Crescent School District. Teaching allowed Consuelo to introduce young people to another of Consuelo's passions, the works of William Shakespeare. Every year, she would help direct her students in a full-length production of a Shakespearean play.

Consuelo was a dedicated volunteer. She was a member of the Port Townsend Sunrise Rotary and volunteered hundreds of hours in various roles at Chimacum schools and numerous theater companies.

In her honor, Sunrise Rotary will team with the Jefferson County Health Department outreach team to periodically host a blood pressure/stroke awareness booth at the Port Townsend Farmers Market. Also, Sunrise Rotary plans to have annual scholarships for youth theater education in Consuelo's name.

Consuelo is survived by her husband, Marshall; son, Tiburcio; mother, Aurora Aduviso, and siblings Don Aduviso and Liza Dawn Aduviso Ramirez. Consuelo is remembered by a loving extended family of in-laws, aunts, uncles, cousins, nieces and nephews. She was a wonderful person who had a positive impact on hundreds of lives.

A funeral mass will be held 11 a.m. Saturday, Sept. 16 at St. Mary Star of the Sea Church in Port Townsend. Also on Saturday, a celebration of life for Consuelo will be held at 4 p.m. at the Old Alcohol Plant Hotel in Port Hadlock.



Kelsey Leigh Richter

OCTOBER 28, 1980 - AUGUST 15, 2023

Beloved Mother, Daughter, Sister, Aunt and forever friend passed away suddenly in Port Townsend, WA on Aug. 15.

She was born on Oct. 28, 1980 to Jack and Barb Richter. She spent her first 10 years living in Snoqualmie Valley before her family moved to Port Townsend, graduating from Port Townsend High School in 1999. She returned to Port Townsend in 2003 to be with family and raise her son. She worked at AP&T where she recently celebrated her 15th anniversary with them.

Kelsey had a great love for her family and longtime friends. Family gatherings, camping, outdoors, enjoying music and concerts and going to the ocean were always at the top of her list.

She is survived by her son, Jacoby Richter-McCoy; mother, Barb Richter; sister Lauren (Jim) Dunn; brother, Neal (Elizabeth) Richter; nephew, Rylan Dunn, and nieces, Leighton Dunn, Silver, and Willa Richter, along with numerous aunts, uncles and cousins who all love her and will miss her dearly. She is preceded in death by her dad, Jack Richter.

Kelsey's celebration of life will be on Saturday, Sept. 16 at the USO building at Fort Worden from 2 p.m. to 5 p.m.



RELIGION & SPIRITUALITY

Bahá'í Faith

360-385-0169 to contact Jefferson County Bahá'ís National and International information and contact: www.bahai.us and www.bahai.org or 1-800-22-UNITE

Upcoming Feast Days —

Month of Asmá (Names) begins sunset August 19
Month of 'Izzat (Might) begins at sunset September 7
Month of 'Mashiyat (Will) begins at sunset September 26

Weekly meetings, open to the public, all are videoconferences. Call the local contact number above and a link will be provided.

- Wednesday morning prayers at 9:00 am
- Sunday morning prayers at 10:00 am.

O peoples of the earth! Verily the resplendent light of God has appeared in your midst, invested with this unerring Book, that ye may be guided aright to the ways of peace, and step out of the darkness into the light and onto this far-extended Path of Truth.

— The Báb

First Baptist Church of Port Townsend

Loving God and Loving Port Townsend • Pastor: Skip Cadorette
1202 Lawrence St., Port Townsend WA 98368
Phone: 360-385-2752 • E-mail: firstbaptistpt@gmail.com
On the web: www.firstbaptistpt.org
Find us on Facebook at FirstBaptistChurchofPT

Sunday Worship: 9:30am A relaxed, come-as-you-are, blend of contemporary and traditional styles of music, traditional and emerging styles of worship, prayer and honest Biblical teaching. Nursery care is provided.

11:00am Classes for kids and youth; sermon discussion and coffee hour for adults.

First Presbyterian Church, PT

Rev. Paul Heins, 1111 Franklin St., Port Townsend • 360-385-2525
www.fpccpt.org • welcome@fpccpt.org

Spirit, Compassion, Justice

9:30 am Worship & Sunday School

Live Streaming worship service at 9:30 am each Sunday at fpccpt.org

First Church of Christ, Scientist Port Townsend

Christian Science Church, Sunday School and Reading Room at 275 Umatilla Ave. 360-379-1139

Sunday Services at 10am, Wednesday Testimony Meetings at noon, Reading Room open Saturday, 11:30am-2pm. All are welcome.

You are also invited to follow us on Facebook at Christian Science Church PT for more information and inspiration.

Grace Christian Center

Solid, Spirit-filled Bible teaching. "Loving Jesus and loving each other."
Meeting at 200 Olympic Pl., Port Ludlow Conference Center
360-821-9680 Pastor Kevin Hunter, ThD
gracechristiancenter.us

Sunday service: 10am; **Grace Gathering:** Wed., 6:30pm

Grace Lutheran Church - ELCA

1120 Walker St., Port Townsend • www.gracelutheranpt.org
360-385-1595 • The Rev. Sean Janssen, Pastor

Sundays

10:30 a.m. Worship with Holy Communion

Mondays

10:00 a.m. Quilting for Lutheran World Relief

2:00 p.m. Prayers Against Cancer (last Monday of each month)

Tuesdays

1:30 p.m. Bible Study (on hiatus until September 5)

Fridays

8:00 a.m. Bible and Breakfast for Men at The Roadhouse

Visitors are always welcome!

More information can be found at www.gracelutheranpt.org

Lighthouse Baptist

108 Airport Road, Port Townsend; 379-2475;
lighthousebaptistchurchpt@gmail.com

Find us on Facebook: Lighthouse Baptist Church of Port Townsend

• LBC is an old-fashioned, independent Baptist church. We are King James Bible believers, and we enjoy singing traditional hymns. Filled with friendly people who love the Lord, our church is waiting to give you a warm welcome.

First Sunday of each month: Sunday School, 10am; Morning worship, 11am. Potluck following morning service
Afernoon service immediately after the meal
No evening service (first Sundays only)

All other Sundays of the month: Sunday School, 10am; Morning Service, 11am; Light snack following morning service; Evening Service, 6pm

Wednesday Night Bible Study, 7pm

Men's Prayer Breakfast: Second Saturday of each month, 9:30am at the church

Ladies' Lunch: Third Saturday of each month, 10:30am at the church

Lutheran Church of the Redeemer LCMC

A Come-As-You-Are Family of Faith.

Pastor Don Pieper • 45 Redeemer Way, Chimacum
360-385-6977 • lcr.office@redeemerway.org

Sundays: **Traditional service**, 8am; **Praise**, 10:30am

Port Townsend Seventh-day Adventist

Pastor: Collette Pekar • 360-385-4831 • info@ptadventist.org
ptadventist.org • Campuses * 331 Benton Street ** 1505 Franklin

Tuesdays & Thursdays 10am-3pm **Community Services Ministry

Wednesdays 6:30pm In-Home Bible Study Call/Email for location

Saturday Mornings *9:30am Bible Classes *11am Praise & Worship

Quakers – Religious Society of Friends

Accessible building, inclusive and welcoming community

Port Townsend Friends MEETINGHOUSE
19th & Sheridan, Port Townsend

Sundays, 10 am Silent Worship, and at noon:
1st Sunday of the month Query Worship Sharing
2nd Sunday business meeting
3rd Sunday Potluck
4th Sunday Adult Religious Education
Masks optional

A separate Zoom meeting continues at 10 am Sundays. We sometimes hold midweek worship.

Contact us for information about joining these activities:
360-797-5372 or https://ptquaker.org/
More info: https://quakerspeak.com/collections/

San Juan Baptist Church

1704 Discovery Rd. Port Townsend • www.sanjuanbaptist.com
Office Email: office@sanjuanbaptist.com
Office Phone: 360-385-2545
Pastor Noel Muscutt • Email: ndmuscutt@sanjuanbaptist.com

Join us at 10:00am on Sundays for our worship service IN-PERSON!

Prayer Meetings: Wednesdays 7 pm online and Thursdays 10 am in-person

We're on Facebook! Search for San Juan Baptist Church. Email the church office for more information and to get connected! office@sanjuanbaptist.com

Saint Paul's Episcopal Church

The Episcopal Church welcomes you. We are an open and inclusive congregation - worship with us in Washington's oldest Episcopal church building in continuous use. We welcome everyone without exception.

Corner of Jefferson & Tyler • 360-385-0770 • stpaulspt.org
stpauls_pt@outlook.com, Rev. Dianne Andrews, Rector

Sundays Holy Eucharist
8:00 am rite I
10:30 am rite II with music

WEDNESDAY Healing & Eucharist
10:30 am

MON-WED-FRI Centering Prayer
9:00-9:30 Online

Join us as www.stpaulspt.org for live-streamed services.

St. Mary Star of the Sea Catholic Church

Fr. Peter Adoko-Enchill
1335 Blaine Street (Harrison & Blaine) Port Townsend
(360)385-3700 • www.stmaryss.com

Daily Mass: Mon, Thurs, & Fri 12:00 PM; Sat 9:00 AM

Wednesday Evening Mass 5:30 PM
Friday Adoration 12:30 PM to 6:00 PM
Saturday Vigil Mass: 4:30 PM
Sunday 8:30 AM Spanish Mass; 11:00 AM English Mass

Unity Spiritual Enrichment Center

Spirituality with Open Hearts & Open Minds
Rev. Pamela Douglas-Smith • unitypt.org
3918 San Juan (near Blue Heron), 360-385-6519

EMBODIED SPIRITUALITY 2023

The Seven Whispers:
Listening to the Voice of Spirit

SUNDAY SERVICES at 11am on zoom and at church
Sept 3 Love the Folks in Front of You & Return to the World
Sept 10 Spirit, Pilgrimage and Faith
Sept 17 Rev Pam's 20th Anniversary and Potluck Celebration
Sept 24 Dr Saul Shaye, guest speaker "Let Your Light Shine"

SPECIAL EVENTS

DR. SAUL SHAYE RETURNS TO UNITY! September 24, 1-4pm workshop on Hi-Level Wellness: A Healer's Odyssey and a Tuesday Evening workshop on Healing with Animals. He will also be available Monday thru Wednesday for private sessions.

Richard Russell Group "One World Music" in concert Saturday, Sept. 30th 3:30-5:30pm

All our other gatherings continue unless notified otherwise
... some in person and some via Zoom www.unitypt.org

WIC seeks healthy moms and kids

THOMAS MULLEN
PAPERBOY@VCN.COM

“We’re never telling people what to eat. We help them identify what improvements they can make in their food choices. All families want to feed their kids healthy food,” Jefferson County WIC (Women Infants and Children) Coordinator Karen Obermeyer told The Leader.

Washington WIC is innovative, she said, providing its participants with a WIC card which looks and works like a debit card.

“Coming down the line we have a program for online purchases, so moms can go and pick up groceries without leaving their car, which is really convenient for parents with children,” Obermeyer said.

WIC is run through the Jefferson County Public Health office at 615 Sheridan, but Obermeyer said moms interested in the program need not visit their office, initially.

“I just want people to know how easy it is to sign up for WIC, particularly for young families who can be struggling to make ends meet. WIC is for a woman that is pregnant or breastfeeding, or any infant or child under five, and this can include grandparents taking care of young kids, or foster parents, which we have quite a bit of that in Jefferson County,” she said.

The first step is determining financial eligibility. For a family of four that means \$55,000 per year, which is just below the median

income in Jefferson County of \$57,000. Families are automatically eligible if they already receive Apple Health (Medicaid) and that includes 58 percent of the babies born in Jefferson County.

“We’re talking about a large percentage of people qualifying for this nutrition program which helps with food security,” Obermeyer said.

After eligibility is determined, Obermeyer’s office schedules an appointment, either via telephone or in person.

“We’ll review information about their pregnancy, information about feeding their kids, breast feeding, whatever way they decide to feed their infant. We talk a lot about strategies for kids that don’t like vegetables,” she said.

That strategy includes division of responsibilities between a mom and her children. Obermeyer said that parents are responsible for offering meals and snacks at a regular time, choosing a wide variety of food and having a comfortable place for a kid to sit and eat.

“The child decides if they’re hungry, if they want to eat and how much to eat. Fostering healthy relationships with food starts with that responsibility,” she said.

WIC is designed as a voluntary program, a resource to provide support so moms don’t have to immediately return to work after a pregnancy. It is aimed to improve health outcomes, she said by focusing on three main areas:

providing food, providing education on nutrition, and providing referrals for health.

“We work with families to find a nutritional topic that they’re interested in. That could mean having the basic bacon, lettuce and tomato on whole wheat which is more nutritious than on white bread. It’s about helping people find simple ways to better their nutrition.”

People who participate in WIC, she said, are more likely to stay healthy as they age.

“And children who participate in WIC are more likely to participate in dental services. WIC participation also improves birth outcomes for high risk moms. I think that our staff is really compassionate and easy to work with. We can connect people with the free diaper program at the Y and the something called, ‘birth to three,’ which is a developmental screening program designed to let parents know if their kids are on track with their development.”

Obermeyer said that inflation has hit low-income families particularly hard at the grocery store.

The WIC is a USDA funded program. Congress is currently considering reducing its fruit and vegetable funding by as much as a 56 percent for children and 70 percent for adults, according to the National WIC Association.



Above: WIC participants Aliina Lahti with Makee Lahti-Locklear, buying fresh local produce at Jefferson County Farmers Market. Below: The WIC is a USDA-funded program. Courtesy photos



Don't get left in the dark.

The Leader

In Depth • In Touch • Independent
360-385-2900 | www.ptleader.com/subscribe

\$6.99 per month

Delivered to your mailbox.
Includes unlimited online & e-edition access