



# BUSINESS & INDUSTRY

SHELBYVILLE  
**TIMES-GAZETTE**

# LOCAL CONNECTIONS

## Better for Business



### **Business Broadband**

Up to 10 GIG speed for high-data traffic

### **Managed Wi-Fi Services**

Reliable, secure connections to your staff and visitors

### **Ethernet Services**

Fast and private, scalable solutions with real-time monitoring

### **Single or Multi-site**

Network architecture for single or multiple site applications

### **Redundancy**

Ensuring your business has diverse internet connectivity

### **Hosted Voice**

Telephony scaled to fit the needs of your business, both onsite and teleworker-capable

### **Telephony**

Enterprise-level connectivity:

- PRI
- SIP Trunking
- Direct Inward Dialing (DID)

### **Video/Audio Conferencing**

Stay connected from anywhere and any time zone

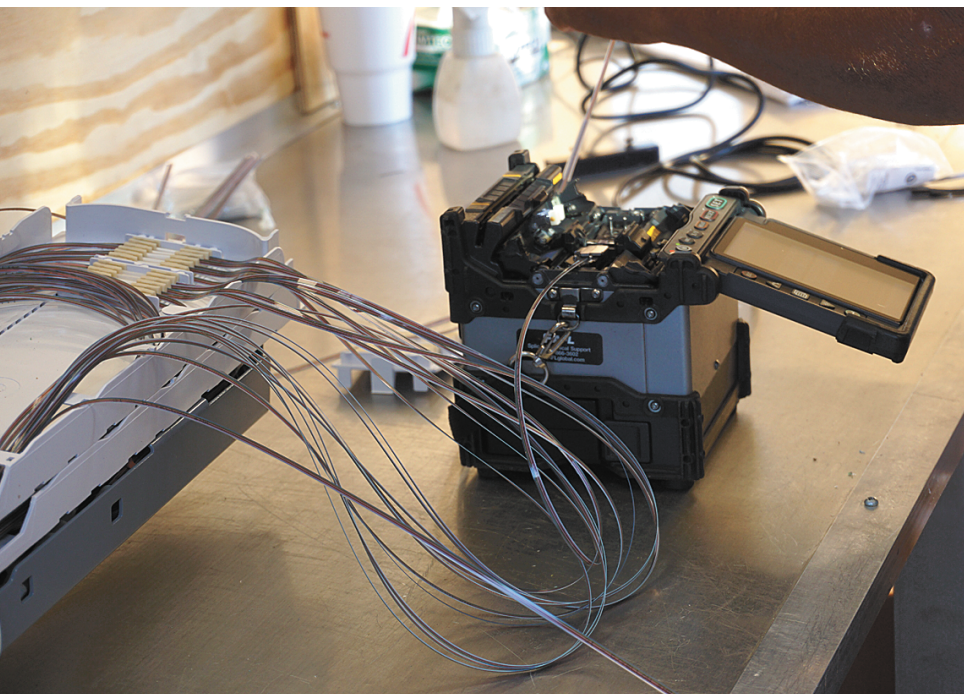
**Call or visit [united.net/business](https://united.net/business)**

**Grace Simpson**  
615-648-9127

**Joe Marchesoni**  
931-619-0294



# United Communications: A Local Industry Leader



United Communications is a “Local, Fast and Reliable Internet Service Provider.” Local teams in middle Tennessee respond to Customer Service, Technical Support and with Technicians that are dispatched right out of Shelbyville.

That means something to this community, especially to local industry.

United Communications works consistently to assist large industry in Shelbyville and Bedford County with their High-Speed Internet (both Dedicated and Business Fiber) needs along with Voice Communications including Hosted PBX w VoIP phones, as well as traditional business phone services.

United Communications is recognized by BroadbandNow as having some of the

fastest Internet speeds available in the country, with bandwidths up to one gigabit delivered over its state-of-the-art fiber network.

“We supply high-speed internet and the latest Wi-Fi 6 technology, as well as digital TV and phone service for residential customers and enterprise-class businesses in Middle Tennessee.”

While United is on the cutting edge of new technology, the company’s roots were established in 1947. With the evolution of the Internet, United continued to innovate and was one of the first companies in middle Tennessee to introduce a Fiber-to-the-Business network.

With our Operations Network located, just up the road in Chapel Hill, United has a fiber network with over 1,200 route miles of fiber backbone covering portions of Bedford, Marshall, Williamson, Rutherford, Franklin, and Davidson counties.

This includes communities such as Shelbyville, Bell Buckle, Flat Creek, Unionville, Wartrace, Antioch, Arrington, Belfast, Brentwood, Chapel Hill, College Grove, Columbia, Eagleville, Estill Springs, Fosterville, Franklin, La Vergne, Lewisburg, Murfreesboro, Nolensville, Smyrna, and Thompson Station.

In its quest to constantly improve service offerings and customer experience, United is on a direct path to bring high-speed Internet services to new areas, with a focus on under served communities in Tennessee. United Communications is a subsidiary of Middle Tennessee Electric Membership Corporation.

No longer is the most sophisticated technology limited to international corporations or giant firms that can afford in-house IT experts, said Marchesoni. “Whether you are a small professional services company or a multi-location regional manufacturer, United Communications can provide access to today’s most advanced communications solutions.”

United is so serious in working with the community and industry, it wants to partner in your business success by offering a \$500 contract buyout when switching out your business phone and internet services to United Communications. Call 1-800-779-2227 to talk to a business representative.





First Community Bank, Gold Star sponsor

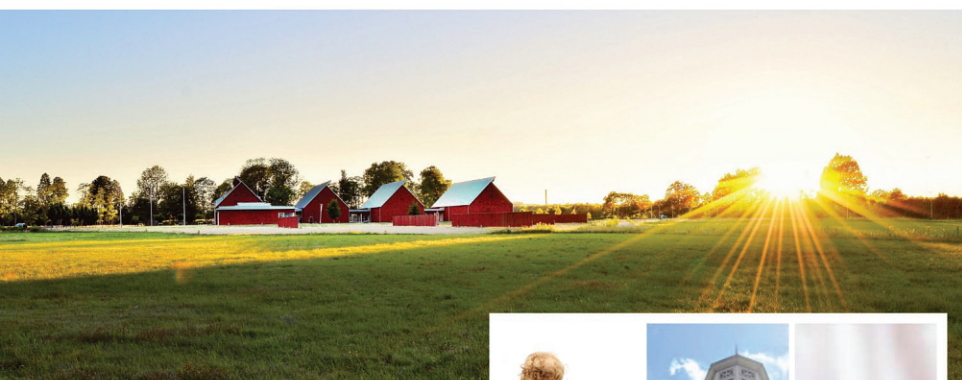


United Communications, Gold Star sponsor



**FIRST  
COMMUNITY  
BANK**

FIRST COMMUNITY BANK  
OF TENNESSEE  
207 ELM STREET  
SHELBYVILLE, TN 37160  
931.684.5800



**Your hometown bank.**

First Community Bank - opened its doors in April 1988. We offer friendly hometown service with a smile. Come join the family at First Community Bank.

**Lobby Hours**  
Monday- Thursday 8:00 AM- 4:00 PM  
Friday 8:00 AM- 5:00 PM  
Saturday 8:00 AM - 12:30 PM  
**Drive Through Hours**  
Thursday 8:00 AM- 4:30 PM  
Saturday 8:00 AM- 12:30 PM

Branches Located in  
Shelbyville- Lynchburg-  
Murfreesboro



FIRSTCOMMUNITYBANKER.COM

#ThatsMyBank



# Annual Chamber Mixer on Tuesday, Nov. 23

## New faces, great sponsorship

For the Shelbyville Bedford County Chamber of Commerce, the annual Holiday Mixer is the biggest fundraiser of the year. But also the perfect time to thank the members and sponsors for their continued year-around support.

“It’s a great networking event for members and prospective members,” said Lacey Deeds, new Chamber of Commerce chief executive officer.

This year’s mixer, the 26th Annual, will be Nov. 23, from 5 to 7 p.m. at the Blue Ribbon Circle on the Celebration Grounds. The event is free.

The event is made possible by community sponsors who have donated product and money to create a fun evening event. Many of the sponsors have been long-time supporters of both the Mixer and the Chamber.

“This year has been exceptional in the way our sponsors have participated and supported the Chamber. And our volunteers have put forth many hours of effort to make sure the event is a great success and a showcase for our sponsors and members,” said Deeds.

Although the event has been going on for many years, expect some changes! For more information about the event, contact the Chamber at 931-684-3482.

**Additional sponsors in futre T-G edition.**



**Lacey Deeds**

JOIN THE WALMART DC TEAM



T-G Photo by Zoe Haggard

Whether you're filling orders for stores, consumers or performing general repairs, At Walmart DC, you'll have continuous training, a clean safe working environment and have the opportunity to perform with industry leading technology. Walmart DC associates move fast, but they do it together. The distribution center is located at 285 Frank Martin Road in Shelbyville.

# Walmart DC 6062

## ***HIRING!!!***

### **Orderfillers and Lift Drivers**

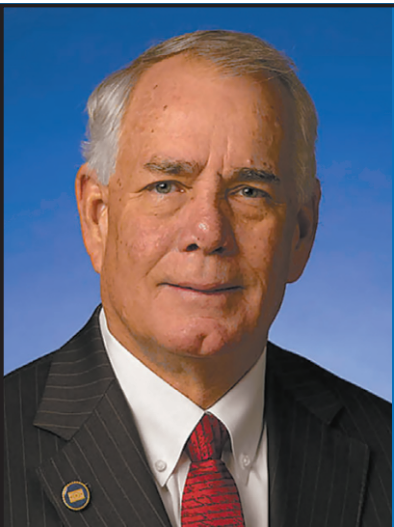
---

**Start Pay Up To \$17.60**  
**Top Out Pay Up To \$31.80**  
**\$2,000 Sign-On Bonus!!**

---

[walmartstores.com/careers](https://walmartstores.com/careers)  
Text "DC" to 240240 to apply!

# 931-680-3462



*"I am honored  
to represent the  
people of the  
62nd district of  
Tennessee."*

rep.pat.marsh@capitol.tn.gov

Bedford and parts of Lincoln County

**615-741-6824**

**PAT MARSH,  
STATE REPRESENTATIVE**



**GOGGIN**

WAREHOUSING

LOGISTICS • TRANSPORTATION • STORAGE • DISTRIBUTION

**WE PROVIDE  
MORE...  
SERVING OVER  
35 LOCATIONS  
IN 7 STATES.**

Corporate Headquarters  
111 Eaton Dr.  
Shelbyville, TN 37160  
**931-684-8971**

[www.gogginwarehousing.com](http://www.gogginwarehousing.com)



- Custom Cabinets  
Entertainment Centers  
Bookcases and Vanities
- Marble & Laminate Tops  
• Granite • Quartz

**SWING CABINETS**

331 Pinkston Road, Shelbyville  
931-684-3576 • 931-703-5599



Submitted Photos

# Big G Express' Mallory ready for special run

A trucking industry that gives back—that's Big G Express, Inc. Bobby Mallory, Big G Express Driver of the Year, will be making the 2021 run to Arlington National Cemetery on Dec. 18 for the traditional Wreaths Across America.

Wreaths Across America coordinates wreath-laying at more than 2,500 locations across the United States in honor of or in memory of an American veteran each December.

Arlington National Cemetery is a United States military cemetery in Arlington County, Virginia, across the Potomac River from Washington, D.C., in whose 639 acres the dead of the nation's conflicts have been buried, beginning with the Civil War, as well as reinterred dead from earlier wars.



Director Bobby Mallory  
Big G. Express Driver of the Year



## BIG G EXPRESS, INC.

100% Employee Owned



**190 Hawkins Drive, Shelbyville, TN 37160**

**Phone (931) 684-9140**

**[www.bigexpress.com](http://www.bigexpress.com) - [www.ikettrans.com](http://www.ikettrans.com)**

Big G Express Family of Companies  
Big G Express, Big G Warehousing, Big G Logistics, Ike Transportation

# Shelbyville economy past, present, future

By **HENRY FELDHAUS**

Shelbyville City Councilman

In 1981, when I first served on Shelbyville City Council, we were focused on attracting manufacturing jobs. We wanted more large companies affiliated with the automotive industry. Nissan just landed in Smyrna, and we sought a large spinoff from their supplier chain.

Shelbyville has evolved from an economy dependent upon manufacturing facilities with several large employers like Eaton Corporation, Stanley Tools, Empire Pencil (Hasbro, Inc subsidiary), and Fly manufacturing, which made blue jeans and clothing. While we still have some large employers, we are seeing more automotive parts and poultry growth in our area. Shelbyville has successfully attracted more retail and eating establishments over the past 10 years.

Today, we are more focused on the ser-

vice industries and skilled manufacturing jobs. The tourist and leisure industry are traveling through Shelbyville and Bedford County every day. We hope to capitalize on more restaurants, hotels, and the riverfront developments to provide extra amenities for the traveler as well our local citizens. The millennial generation is very mobile now. This educated generation wants more entertainment venues and they are looking to downtown areas for new homes.

We certainly have more opportunities to control our destiny today than we did 10 years ago. The influx of new neighbors and businesses are pushing for more leisure amenities. The baby boomers are retiring here. We have some new leadership with vision to establish an accountable new economic development organization. The Shelbyville Bedford Partnership is doing tremendous things to gain the attention of top retail developers.

They have great new businesses calling on our community daily exploring growth opportunities. The education partnership they have developed is focused on training the employees required by these new economic prospects.

Growing our community with high paying jobs, low crime, and superior quality of life has kept me interested in being a part of the local community. If we do not provide a vision for growth and lay the groundwork for positive developments, we will be overwhelmed with haphazard growth and the leftovers from our larger economies at our borders.

My expectations are to attract at least 1,000 new high paying jobs to our community. The new TCAT and businesses locating in the park will be the result of years of preparations and the vision of our leadership. We want to compliment the quality of Uncle Nearest by providing infrastructure for growth and high paying jobs.

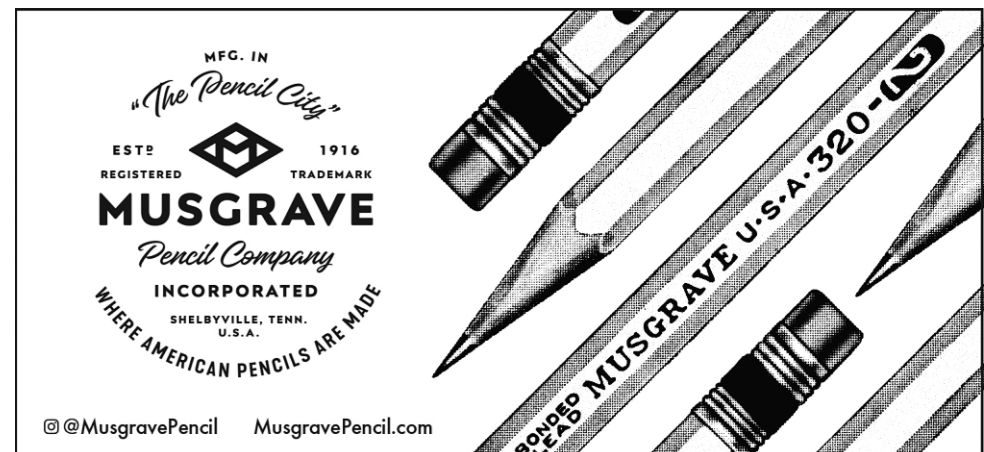
We always need more money to invest in sewer, water, and natural gas service in the highly attractive airport area.

We hope to direct resources for the



Henry Feldhaus

next several years to accommodate this high growth area. If the State of Tennessee would allow cities to annex property, we could establish a faster timetable to accomplish these goals.



## City of Shelbyville, Tennessee

**PRIDE • VISION • SERVICE • PROGRESS**

We are committed to working together for the future benefit and economic growth of our City. While the recruitment of new industry is important, also significant is assistance to existing industry expansion and job retention. We thank all residents, businesses and industry who are part of these efforts.

### MAYOR WALLACE CARTWRIGHT

Councilmember Henry Feldhaus, Ward 1 • Councilmember Marilyn Ewing, Ward 2  
Councilmember Gary Haile, Ward 3 • Councilmember William Christie, Ward 4  
Councilmember Stephanie Isaacs, Ward 5 • Councilmember Ricky Overcast, Ward 6

[www.shelbyvilletn.org](http://www.shelbyvilletn.org)